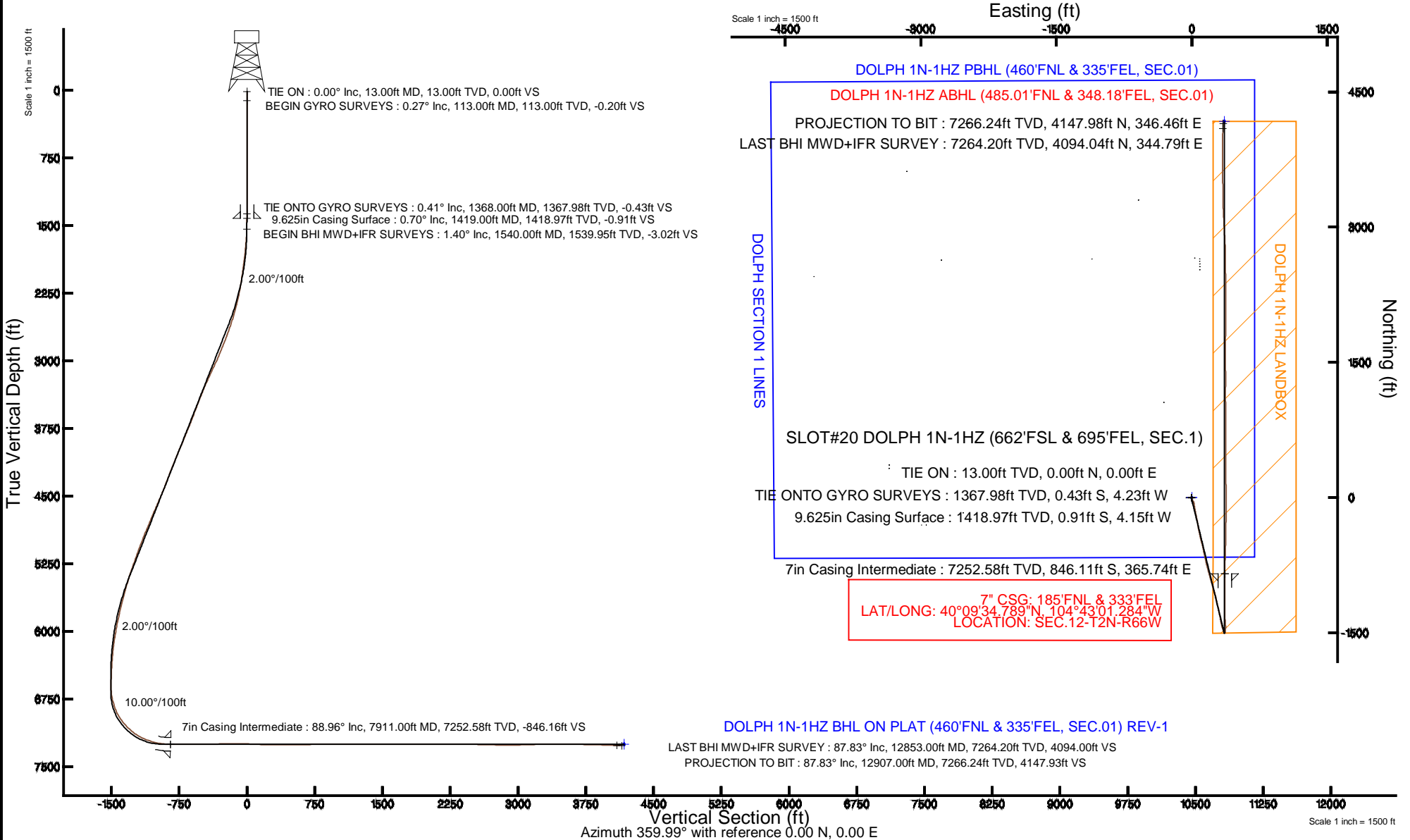


KERR-MCGEE OIL & GAS ONSHORE LP

Location: COLORADO Slot: SLOT#20 DOLPH 1N-1HZ (662'FSL & 695'FEL, SEC.1)
 Field: WELD COUNTY (KERR MCGEE) Well: DOLPH 1N-1HZ
 Facility: SEC.01-T2N-R66W Wellbore: DOLPH 1N-1HZ PWB

Plot reference wellpath is DOLPH 1N-1HZ (REV-A.0) PWP

True vertical depths are referenced to ENSIGN 145 (13'KB) (RKB)	Grid System: NAD83 / Lambert Colorado SP, Northern Zone (501), US feet
Measured depths are referenced to ENSIGN 145 (13'KB) (RKB)	North Reference: True north
ENSGN 145 (13'KB) to Mean Sea Level: 5001 feet	Scale: True distance
Mean Sea Level to Mud line (At Slot: SLOT#20 DOLPH 1N-1HZ (662'FSL & 695'FEL, SEC.1)): 0 feet	Depths are in feet
Coordinates are in feet referenced to Slot	Created by: robiale01 on 9/30/2014





Actual Wellpath Report

DOLPH 1N-1HZ AWP

Page 1 of 7



REFERENCE WELLPATH IDENTIFICATION			
Operator	KERR-MCGEE OIL & GAS ONSHORE LP	Slot	SLOT#20 DOLPH 1N-1HZ (662'FSL & 695'FEL, SEC.1)
Area	COLORADO	Well	DOLPH 1N-1HZ
Field	WELD COUNTY (KERR MCGEE)	Wellbore	DOLPH 1N-1HZ AWB
Facility	SEC.01-T2N-R66W		

REPORT SETUP INFORMATION			
Projection System	NAD83 / Lambert Colorado SP, Northern Zone (501), US feet	Software System	WellArchitect® 4.0.0
North Reference	True	User	Robiale01
Scale	0.999958	Report Generated	9/30/2014 at 12:03:48 PM
Convergence at slot	n/a	Database/Source file	AINALEN_DB/DOLPH_1N-1HZ_AWB.xml

WELLPATH LOCATION						
	Local coordinates		Grid coordinates		Geographic coordinates	
	North[ft]	East[ft]	Easting[US ft]	Northing[US ft]	Latitude	Longitude
Slot Location	-361.84	3350.67	3218464.13	1302817.57	40°09'43.150"N	104°43'05.995"W
Facility Reference Pt			3215110.60	1303150.30	40°09'46.728"N	104°43'49.152"W
Field Reference Pt			3197771.84	1268891.29	40°04'09.600"N	104°47'36.000"W

WELLPATH DATUM			
Calculation method	Minimum curvature	ENSIGN 145 (13'KB) (RKB) to Facility Vertical Datum	5001.00ft
Horizontal Reference Pt	Slot	ENSIGN 145 (13'KB) (RKB) to Mean Sea Level	5001.00ft
Vertical Reference Pt	ENSIGN 145 (13'KB) (RKB)	ENSIGN 145 (13'KB) (RKB) to Mud Line at Slot (SLOT#20 DOLPH 1N-1HZ (662'FSL & 695'FEL, SEC.1))	5001.00ft
MD Reference Pt	ENSIGN 145 (13'KB) (RKB)	Section Origin	N 0.00, E 0.00 ft
Field Vertical Reference	Mean Sea Level	Section Azimuth	359.99°

Actual Wellpath Report

DOLPH 1N-1HZ AWP

Page 2 of 7

REFERENCE WELLPATH IDENTIFICATION			
Operator	KERR-MCGEE OIL & GAS ONSHORE LP	Slot	SLOT#20 DOLPH 1N-1HZ (662'FSL & 695'FEL, SEC.1)
Area	COLORADO	Well	DOLPH 1N-1HZ
Field	WELD COUNTY (KERR MCGEE)	Wellbore	DOLPH 1N-1HZ AWB
Facility	SEC.01-T2N-R66W		

WELLPATH DATA (151 stations) † = interpolated/extrapolated station										
MD [ft]	Inclination [°]	Azimuth [°]	TVD [ft]	Vert Sect [ft]	North [ft]	East [ft]	Latitude	Longitude	DLS [°/100ft]	Comments
0.00†	0.000	209.850	0.00	0.00	0.00	0.00	40°09'43.150"N	104°43'05.995"W	0.00	
13.00	0.000	209.850	13.00	0.00	0.00	0.00	40°09'43.150"N	104°43'05.995"W	0.00	TIE ON
113.00	0.270	209.850	113.00	-0.20	-0.20	-0.12	40°09'43.148"N	104°43'05.997"W	0.27	BEGIN GYRO SURVEYS
213.00	0.180	143.580	213.00	-0.54	-0.54	-0.14	40°09'43.145"N	104°43'05.997"W	0.26	
313.00	0.120	130.590	313.00	-0.73	-0.73	0.03	40°09'43.143"N	104°43'05.995"W	0.07	
413.00	0.090	58.450	413.00	-0.76	-0.76	0.18	40°09'43.143"N	104°43'05.993"W	0.13	
513.00	0.220	4.640	513.00	-0.52	-0.52	0.26	40°09'43.145"N	104°43'05.992"W	0.18	
613.00	0.400	326.610	613.00	-0.04	-0.04	0.08	40°09'43.150"N	104°43'05.994"W	0.26	
713.00	0.140	318.180	713.00	0.34	0.34	-0.19	40°09'43.153"N	104°43'05.997"W	0.26	
813.00	0.430	284.150	812.99	0.52	0.52	-0.64	40°09'43.155"N	104°43'06.003"W	0.32	
913.00	0.280	312.140	912.99	0.78	0.78	-1.18	40°09'43.158"N	104°43'06.010"W	0.23	
1013.00	0.480	291.740	1012.99	1.10	1.10	-1.75	40°09'43.161"N	104°43'06.018"W	0.24	
1113.00	0.530	235.890	1112.99	0.99	0.99	-2.52	40°09'43.160"N	104°43'06.027"W	0.48	
1213.00	0.540	252.700	1212.98	0.60	0.59	-3.36	40°09'43.156"N	104°43'06.038"W	0.16	
1313.00	0.600	212.200	1312.98	0.01	0.01	-4.08	40°09'43.150"N	104°43'06.048"W	0.40	
1368.00	0.410	177.360	1367.98	-0.43	-0.43	-4.23	40°09'43.146"N	104°43'06.049"W	0.64	TIE ON TO GYRO SURVEYS
1540.00	1.400	160.000	1539.95	-3.02	-3.02	-3.48	40°09'43.120"N	104°43'06.040"W	0.59	BEGIN BHI MWD+IFR SURVEYS
1633.00	4.000	150.000	1632.84	-6.89	-6.90	-1.47	40°09'43.082"N	104°43'06.014"W	2.83	
1727.00	5.600	161.400	1726.51	-14.08	-14.08	1.63	40°09'43.011"N	104°43'05.974"W	1.97	
1914.00	8.300	151.300	1912.13	-34.57	-34.57	11.03	40°09'42.808"N	104°43'05.853"W	1.58	
2007.00	8.900	152.400	2004.08	-46.84	-46.84	17.58	40°09'42.687"N	104°43'05.769"W	0.67	
2101.00	9.370	161.910	2096.89	-60.56	-60.56	23.33	40°09'42.552"N	104°43'05.695"W	1.68	
2194.00	10.130	175.030	2188.56	-75.91	-75.90	26.39	40°09'42.400"N	104°43'05.655"W	2.52	
2288.00	11.920	171.710	2280.82	-93.75	-93.74	28.50	40°09'42.224"N	104°43'05.628"W	2.02	
2382.00	13.680	168.850	2372.48	-114.26	-114.26	32.05	40°09'42.021"N	104°43'05.582"W	1.99	
2472.00	16.120	170.750	2459.45	-137.04	-137.04	36.12	40°09'41.796"N	104°43'05.530"W	2.76	
2562.00	18.260	169.620	2545.43	-163.24	-163.24	40.67	40°09'41.537"N	104°43'05.471"W	2.41	
2652.00	18.760	166.790	2630.77	-191.20	-191.20	46.52	40°09'41.261"N	104°43'05.396"W	1.14	
2742.00	20.640	168.510	2715.50	-220.84	-220.83	52.98	40°09'40.968"N	104°43'05.313"W	2.19	
2832.00	22.360	169.860	2799.24	-253.24	-253.23	59.16	40°09'40.648"N	104°43'05.233"W	1.99	
2922.00	22.010	170.410	2882.57	-286.72	-286.71	64.98	40°09'40.317"N	104°43'05.158"W	0.45	
3012.00	24.550	170.570	2965.24	-321.80	-321.79	70.86	40°09'39.970"N	104°43'05.082"W	2.82	
3101.00	26.120	168.990	3045.68	-359.28	-359.27	77.63	40°09'39.600"N	104°43'04.995"W	1.92	
3191.00	25.410	167.850	3126.73	-397.60	-397.59	85.47	40°09'39.221"N	104°43'04.894"W	0.96	
3281.00	24.860	167.100	3208.21	-434.92	-434.91	93.76	40°09'38.852"N	104°43'04.787"W	0.71	
3371.00	23.390	166.350	3290.35	-470.72	-470.71	102.20	40°09'38.498"N	104°43'04.679"W	1.67	
3461.00	22.370	165.180	3373.26	-504.64	-504.63	110.80	40°09'38.163"N	104°43'04.568"W	1.24	
3551.00	21.770	165.820	3456.67	-537.38	-537.37	119.27	40°09'37.840"N	104°43'04.459"W	0.72	
3641.00	21.150	168.270	3540.43	-569.46	-569.45	126.66	40°09'37.523"N	104°43'04.364"W	1.21	
3731.00	21.400	168.910	3624.30	-601.47	-601.46	133.12	40°09'37.206"N	104°43'04.280"W	0.38	
3821.00	21.950	166.300	3707.94	-633.93	-633.91	140.26	40°09'36.886"N	104°43'04.188"W	1.23	
3911.00	22.790	168.030	3791.16	-667.33	-667.31	147.86	40°09'36.556"N	104°43'04.091"W	1.19	
4001.00	23.210	167.830	3874.01	-701.72	-701.70	155.21	40°09'36.216"N	104°43'03.996"W	0.47	
4091.00	23.680	166.140	3956.58	-736.60	-736.58	163.28	40°09'35.871"N	104°43'03.892"W	0.91	

4182.00	22.970	165.670	4040.14	-771.55	-771.53	172.05	40°09'35.526"N	104°43'03.779"W	0.81
---------	--------	---------	---------	---------	---------	--------	----------------	-----------------	------

REFERENCE WELLPATH IDENTIFICATION			
Operator	KERR-MCGEE OIL & GAS ONSHORE LP	Slot	SLOT#20 DOLPH 1N-1HZ (662'FSL & 695'FEL, SEC.1)
Area	COLORADO	Well	DOLPH 1N-1HZ
Field	WELD COUNTY (KERR MCGEE)	Wellbore	DOLPH 1N-1HZ AWB
Facility	SEC.01-T2N-R66W		

WELLPATH DATA (151 stations)										
MD [ft]	Inclination [°]	Azimuth [°]	TVD [ft]	Vert Sect [ft]	North [ft]	East [ft]	Latitude	Longitude	DLS [°/100ft]	Comments
4272.00	22.780	164.570	4123.06	-805.36	-805.34	181.04	40°09'35.192"N	104°43'03.663"W	0.52	
4362.00	22.550	165.600	4206.11	-838.87	-838.85	189.96	40°09'34.860"N	104°43'03.548"W	0.51	
4452.00	21.210	164.200	4289.63	-871.26	-871.23	198.69	40°09'34.540"N	104°43'03.436"W	1.60	
4542.00	21.820	164.320	4373.36	-903.03	-903.00	207.64	40°09'34.227"N	104°43'03.321"W	0.68	
4632.00	22.870	162.750	4456.60	-935.84	-935.81	217.35	40°09'33.902"N	104°43'03.196"W	1.34	
4722.00	24.550	165.060	4539.00	-970.61	-970.58	227.36	40°09'33.559"N	104°43'03.067"W	2.13	
4812.00	23.950	163.370	4621.06	-1006.18	-1006.14	237.40	40°09'33.207"N	104°43'02.937"W	1.02	
4902.00	23.490	163.010	4703.46	-1040.84	-1040.80	247.87	40°09'32.865"N	104°43'02.802"W	0.54	
5082.00	23.380	167.020	4868.62	-1109.95	-1109.92	266.38	40°09'32.182"N	104°43'02.564"W	0.89	
5261.00	21.160	169.790	5034.26	-1176.37	-1176.33	280.08	40°09'31.525"N	104°43'02.388"W	1.37	
5351.00	20.130	165.450	5118.49	-1207.35	-1207.31	286.86	40°09'31.219"N	104°43'02.300"W	2.05	
5439.00	20.580	166.980	5200.99	-1237.08	-1237.04	294.14	40°09'30.926"N	104°43'02.207"W	0.79	
5529.00	19.920	167.240	5285.43	-1267.44	-1267.40	301.09	40°09'30.625"N	104°43'02.117"W	0.74	
5619.00	18.410	166.650	5370.44	-1296.23	-1296.18	307.76	40°09'30.341"N	104°43'02.031"W	1.69	
5709.00	16.800	168.560	5456.22	-1322.80	-1322.76	313.62	40°09'30.078"N	104°43'01.956"W	1.90	
5799.00	16.320	170.340	5542.49	-1348.02	-1347.97	318.33	40°09'29.829"N	104°43'01.895"W	0.78	
5889.00	14.790	170.300	5629.19	-1371.81	-1371.77	322.38	40°09'29.594"N	104°43'01.843"W	1.70	
5979.00	13.310	168.940	5716.50	-1393.30	-1393.26	326.31	40°09'29.382"N	104°43'01.792"W	1.68	
6069.00	13.390	166.140	5804.06	-1413.59	-1413.54	330.79	40°09'29.181"N	104°43'01.735"W	0.72	
6159.00	11.890	163.360	5891.88	-1432.59	-1432.54	335.94	40°09'28.994"N	104°43'01.668"W	1.80	
6249.00	10.740	160.670	5980.13	-1449.39	-1449.34	341.37	40°09'28.828"N	104°43'01.598"W	1.41	
6339.00	9.700	159.670	6068.70	-1464.41	-1464.36	346.78	40°09'28.679"N	104°43'01.529"W	1.17	
6429.00	7.270	157.740	6157.71	-1476.80	-1476.75	351.57	40°09'28.557"N	104°43'01.467"W	2.72	
6519.00	6.240	154.700	6247.08	-1486.49	-1486.44	355.82	40°09'28.461"N	104°43'01.412"W	1.21	
6609.00	4.720	150.500	6336.67	-1494.13	-1494.08	359.74	40°09'28.385"N	104°43'01.362"W	1.75	
6699.00	3.430	155.560	6426.44	-1499.81	-1499.76	362.67	40°09'28.329"N	104°43'01.324"W	1.49	
6789.00	1.630	149.750	6516.35	-1503.37	-1503.32	364.43	40°09'28.294"N	104°43'01.301"W	2.02	
6879.00	0.810	82.300	6606.33	-1504.39	-1504.34	365.71	40°09'28.284"N	104°43'01.285"W	1.69	
6924.00	1.190	39.300	6651.33	-1503.98	-1503.93	366.32	40°09'28.288"N	104°43'01.277"W	1.81	
6969.00	7.040	8.030	6696.19	-1500.89	-1500.84	367.00	40°09'28.319"N	104°43'01.268"W	13.45	
7014.00	12.720	9.050	6740.51	-1493.26	-1493.21	368.17	40°09'28.394"N	104°43'01.253"W	12.63	
7059.00	16.140	6.900	6784.08	-1482.15	-1482.10	369.70	40°09'28.504"N	104°43'01.234"W	7.69	
7104.00	18.510	7.630	6827.04	-1468.86	-1468.81	371.40	40°09'28.635"N	104°43'01.212"W	5.29	
7149.00	21.740	5.280	6869.29	-1453.48	-1453.43	373.11	40°09'28.787"N	104°43'01.190"W	7.40	
7194.00	26.520	359.690	6910.35	-1435.12	-1435.07	373.83	40°09'28.969"N	104°43'01.180"W	11.76	
7239.00	32.080	356.240	6949.58	-1413.13	-1413.08	372.99	40°09'29.186"N	104°43'01.191"W	12.91	
7284.00	36.910	355.950	6986.65	-1387.72	-1387.66	371.25	40°09'29.437"N	104°43'01.214"W	10.74	
7329.00	40.590	356.130	7021.74	-1359.62	-1359.57	369.31	40°09'29.715"N	104°43'01.239"W	8.18	
7374.00	43.330	356.600	7055.20	-1329.60	-1329.54	367.40	40°09'30.011"N	104°43'01.263"W	6.13	
7419.00	46.170	358.150	7087.16	-1297.95	-1297.90	365.96	40°09'30.324"N	104°43'01.282"W	6.76	
7464.00	51.520	359.260	7116.76	-1264.09	-1264.04	365.21	40°09'30.659"N	104°43'01.291"W	12.03	
7509.00	57.420	0.530	7142.90	-1227.49	-1227.44	365.16	40°09'31.020"N	104°43'01.292"W	13.31	
7554.00	61.150	0.800	7165.88	-1188.81	-1188.76	365.61	40°09'31.403"N	104°43'01.286"W	8.30	
7599.00	65.050	1.170	7186.24	-1148.69	-1148.64	366.30	40°09'31.799"N	104°43'01.277"W	8.70	

7644.00	69.710	1.720	7203.54	-1107.18	-1107.13	367.35	40°09'32.209"N	104°43'01.264"W	10.42
---------	--------	-------	---------	----------	----------	--------	----------------	-----------------	-------

REFERENCE WELLPATH IDENTIFICATION			
Operator	KERR-MCGEE OIL & GAS ONSHORE LP	Slot	SLOT#20 DOLPH 1N-1HZ (662'FSL & 695'FEL, SEC.1)
Area	COLORADO	Well	DOLPH 1N-1HZ
Field	WELD COUNTY (KERR MCGEE)	Wellbore	DOLPH 1N-1HZ AWB
Facility	SEC.01-T2N-R66W		

WELLPATH DATA (151 stations) † = interpolated/extrapolated station										
MD [ft]	Inclination [°]	Azimuth [°]	TVD [ft]	Vert Sect [ft]	North [ft]	East [ft]	Latitude	Longitude	DLS [°/100ft]	Comments
7689.00	72.900	0.760	7217.96	-1064.57	-1064.52	368.27	40°09'32.630"N	104°43'01.252"W	7.37	
7734.00	75.810	358.920	7230.10	-1021.25	-1021.19	368.14	40°09'33.058"N	104°43'01.253"W	7.57	
7779.00	79.440	358.670	7239.74	-977.31	-977.26	367.22	40°09'33.493"N	104°43'01.265"W	8.08	
7824.00	82.010	358.720	7246.99	-932.91	-932.86	366.21	40°09'33.931"N	104°43'01.278"W	5.71	
7878.00	87.990	0.050	7251.70	-879.15	-879.09	365.63	40°09'34.463"N	104°43'01.286"W	11.34	
7911.00†	88.962	0.329	7252.58	-846.16	-846.11	365.74	40°09'34.789"N	104°43'01.284"W	3.06	7" CASING POINT
7969.00	90.670	0.820	7252.76	-788.16	-788.11	366.32	40°09'35.362"N	104°43'01.277"W	3.06	
8156.00	90.800	2.320	7250.36	-601.25	-601.20	371.45	40°09'37.209"N	104°43'01.211"W	0.81	
8246.00	90.550	0.520	7249.30	-511.29	-511.24	373.68	40°09'38.098"N	104°43'01.182"W	2.02	
8337.00	90.000	0.990	7248.87	-420.30	-420.25	374.88	40°09'38.997"N	104°43'01.167"W	0.80	
8427.00	90.740	1.580	7248.29	-330.33	-330.28	376.89	40°09'39.886"N	104°43'01.141"W	1.05	
8517.00	90.360	1.520	7247.42	-240.37	-240.31	379.33	40°09'40.775"N	104°43'01.109"W	0.43	
8607.00	90.610	0.340	7246.66	-150.38	-150.33	380.79	40°09'41.664"N	104°43'01.090"W	1.34	
8697.00	89.750	0.100	7246.38	-60.38	-60.33	381.14	40°09'42.554"N	104°43'01.086"W	0.99	
8787.00	87.840	358.800	7248.27	29.59	29.64	380.27	40°09'43.443"N	104°43'01.097"W	2.57	
8877.00	87.550	359.220	7251.89	119.50	119.55	378.72	40°09'44.331"N	104°43'01.117"W	0.57	
8967.00	88.460	358.950	7255.02	209.43	209.48	377.28	40°09'45.220"N	104°43'01.136"W	1.05	
9057.00	89.440	359.710	7256.67	299.41	299.46	376.23	40°09'46.109"N	104°43'01.149"W	1.38	
9147.00	89.910	359.830	7257.18	389.41	389.46	375.87	40°09'46.999"N	104°43'01.154"W	0.54	
9237.00	91.190	0.820	7256.32	479.40	479.45	376.38	40°09'47.888"N	104°43'01.147"W	1.80	
9327.00	90.500	359.240	7254.99	569.38	569.44	376.43	40°09'48.777"N	104°43'01.146"W	1.92	
9417.00	90.860	359.040	7253.92	659.37	659.42	375.07	40°09'49.666"N	104°43'01.164"W	0.46	
9507.00	90.840	359.480	7252.59	749.35	749.40	373.91	40°09'50.556"N	104°43'01.179"W	0.49	
9597.00	90.530	0.040	7251.51	839.34	839.40	373.54	40°09'51.445"N	104°43'01.184"W	0.71	
9687.00	90.120	0.000	7251.00	929.34	929.39	373.57	40°09'52.334"N	104°43'01.183"W	0.46	
9777.00	89.810	359.940	7251.06	1019.34	1019.39	373.52	40°09'53.224"N	104°43'01.184"W	0.35	
9867.00	90.000	359.390	7251.21	1109.34	1109.39	372.99	40°09'54.113"N	104°43'01.191"W	0.65	
9954.00	90.090	0.690	7251.14	1196.34	1196.39	373.05	40°09'54.973"N	104°43'01.190"W	1.50	
10045.00	90.340	0.680	7250.80	1287.33	1287.38	374.14	40°09'55.872"N	104°43'01.176"W	0.27	
10135.00	89.550	358.820	7250.88	1377.32	1377.38	373.75	40°09'56.761"N	104°43'01.181"W	2.25	
10225.00	90.090	359.650	7251.16	1467.32	1467.37	372.55	40°09'57.651"N	104°43'01.196"W	1.10	
10315.00	90.530	359.890	7250.68	1557.31	1557.36	372.19	40°09'58.540"N	104°43'01.201"W	0.56	
10405.00	91.080	0.450	7249.41	1647.30	1647.35	372.45	40°09'59.429"N	104°43'01.197"W	0.87	
10495.00	89.690	0.130	7248.81	1737.30	1737.35	372.91	40°10'00.319"N	104°43'01.192"W	1.58	
10585.00	89.930	1.910	7249.11	1827.28	1827.33	374.51	40°10'01.208"N	104°43'01.171"W	2.00	
10675.00	88.730	0.450	7250.16	1917.25	1917.30	376.36	40°10'02.097"N	104°43'01.147"W	2.10	
10855.00	89.870	358.840	7252.36	2097.22	2097.28	375.25	40°10'03.875"N	104°43'01.161"W	1.10	
10945.00	91.010	0.650	7251.67	2187.21	2187.27	374.85	40°10'04.765"N	104°43'01.166"W	2.38	
11034.00	91.040	0.940	7250.08	2276.19	2276.24	376.08	40°10'05.644"N	104°43'01.151"W	0.33	
11125.00	89.310	359.350	7249.80	2367.18	2367.24	376.31	40°10'06.543"N	104°43'01.148"W	2.58	
11215.00	88.730	358.110	7251.34	2457.15	2457.20	374.32	40°10'07.432"N	104°43'01.173"W	1.52	
11305.00	88.950	359.710	7253.16	2547.11	2547.16	372.61	40°10'08.321"N	104°43'01.195"W	1.79	
11395.00	88.460	358.560	7255.19	2637.08	2637.13	371.25	40°10'09.210"N	104°43'01.213"W	1.39	
11484.00	88.100	359.690	7257.86	2726.02	2726.07	369.89	40°10'10.089"N	104°43'01.230"W	1.33	

11574.00	88.820	357.890	7260.28	2815.97	2816.02	367.99	40°10'10.978"N	104°43'01.255"W	2.15
----------	--------	---------	---------	---------	---------	--------	----------------	-----------------	------

REFERENCE WELLPATH IDENTIFICATION			
Operator	KERR-MCGEE OIL & GAS ONSHORE LP	Slot	SLOT#20 DOLPH 1N-1HZ (662'FSL & 695'FEL, SEC.1)
Area	COLORADO	Well	DOLPH 1N-1HZ
Field	WELD COUNTY (KERR MCGEE)	Wellbore	DOLPH 1N-1HZ AWB
Facility	SEC.01-T2N-R66W		

WELLPATH DATA (151 stations)										
MD [ft]	Inclination [°]	Azimuth [°]	TVD [ft]	Vert Sect [ft]	North [ft]	East [ft]	Latitude	Longitude	DLS [°/100ft]	Comments
11664.00	90.620	356.700	7260.72	2905.86	2905.91	363.74	40°10'11.866"N	104°43'01.309"W	2.40	
11754.00	91.760	357.310	7258.85	2995.72	2995.77	359.04	40°10'12.754"N	104°43'01.370"W	1.44	
11844.00	91.630	356.930	7256.19	3085.56	3085.61	354.52	40°10'13.642"N	104°43'01.428"W	0.45	
11934.00	91.690	357.300	7253.58	3175.41	3175.46	349.99	40°10'14.530"N	104°43'01.486"W	0.42	
12024.00	90.400	359.070	7251.94	3265.35	3265.40	347.14	40°10'15.419"N	104°43'01.523"W	2.43	
12114.00	90.060	359.540	7251.58	3355.34	3355.39	346.05	40°10'16.308"N	104°43'01.537"W	0.64	
12204.00	90.230	358.580	7251.35	3445.33	3445.38	344.58	40°10'17.197"N	104°43'01.556"W	1.08	
12294.00	90.030	358.550	7251.15	3535.30	3535.35	342.32	40°10'18.086"N	104°43'01.585"W	0.22	
12384.00	89.350	359.540	7251.64	3625.28	3625.33	340.82	40°10'18.976"N	104°43'01.605"W	1.33	
12474.00	88.980	359.750	7252.95	3715.27	3715.32	340.27	40°10'19.865"N	104°43'01.612"W	0.47	
12564.00	88.490	358.760	7254.94	3805.24	3805.29	339.10	40°10'20.754"N	104°43'01.627"W	1.23	
12654.00	88.330	1.020	7257.43	3895.20	3895.25	338.92	40°10'21.643"N	104°43'01.629"W	2.52	
12744.00	88.060	1.900	7260.27	3985.13	3985.17	341.21	40°10'22.532"N	104°43'01.599"W	1.02	
12834.00	87.850	1.880	7263.48	4075.02	4075.07	344.18	40°10'23.420"N	104°43'01.561"W	0.23	
12853.00	87.830	1.780	7264.20	4094.00	4094.04	344.79	40°10'23.607"N	104°43'01.553"W	0.54	LAST BHI MWD+IFR SURVEY
12907.00	87.830	1.780	7266.24	4147.93	4147.98	346.46	40°10'24.140"N	104°43'01.532"W	0.00	PROJECTION TO BIT

HOLE & CASING SECTIONS - Ref Wellbore: DOLPH 1N-1HZ AWB Ref Wellpath: DOLPH 1N-1HZ AWP									
String/Diameter	Start MD [ft]	End MD [ft]	Interval [ft]	Start TVD [ft]	End TVD [ft]	Start N/S [ft]	Start E/W [ft]	End N/S [ft]	End E/W [ft]
13.5in Open Hole	13.00	1427.00	1414.00	13.00	1426.97	0.00	0.00	-1.01	-4.13
9.625in Casing Surface	13.00	1419.00	1406.00	13.00	1418.97	0.00	0.00	-0.91	-4.15
8.75in Open Hole	1427.00	7925.00	6498.00	1426.97	7252.78	-1.01	-4.13	-832.11	365.84
7in Casing Intermediate	13.00	7911.00	7898.00	13.00	7252.58	0.00	0.00	-846.11	365.74
6.125in Open Hole	7925.00	12907.00	4982.00	7252.78	7266.24	-832.11	365.84	4147.98	346.46

Actual Wellpath Report

DOLPH 1N-1HZ AWP

Page 6 of 7

REFERENCE WELLPATH IDENTIFICATION			
Operator	KERR-MCGEE OIL & GAS ONSHORE LP	Slot	SLOT#20 DOLPH 1N-1HZ (662'FSL & 695'FEL, SEC.1)
Area	COLORADO	Well	DOLPH 1N-1HZ
Field	WELD COUNTY (KERR MCGEE)	Wellbore	DOLPH 1N-1HZ AWB
Facility	SEC.01-T2N-R66W		

TARGETS									
Name	MD [ft]	TVD [ft]	North [ft]	East [ft]	Grid East [US ft]	Grid North [US ft]	Latitude	Longitude	Shape
DOLPH SECTION 1 LINES		6996.00	0.00	0.00	3218464.13	1302817.57	40°09'43.150"N	104°43'05.995"W	polygon
DOLPH 1N-1HZ LANDBOX		7196.00	0.00	0.00	3218464.13	1302817.57	40°09'43.150"N	104°43'05.995"W	polygon
DOLPH 1N-1HZ BHL ON PLAT (460'FNL & 335'FEL, SEC.01) REV-1		7251.00	4172.99	359.64	3218786.96	1306993.38	40°10'24.388"N	104°43'01.362"W	point

WELLPATH COMPOSITION - Ref Wellbore: DOLPH 1N-1HZ AWB Ref Wellpath: DOLPH 1N-1HZ AWP				
Start MD [ft]	End MD [ft]	Positional Uncertainty Model	Log Name/Comment	Wellbore
13.00	1368.00	Generic gyro - continuous (Standard)	MS ENERGY GYRO SURVEYS <1113-1368>	DOLPH 1N-1HZ AWB
1368.00	7878.00	NaviTrak (MAGCORR,IFR)	BHI MWD+IFR SURVEYS 8 3/4" HOLE <1540-7878>	DOLPH 1N-1HZ AWB
7878.00	12853.00	NaviTrak (MAGCORR,IFR)	BHI MWD+IFR SURVEYS 6 1/8" HOLE <7696-12853>	DOLPH 1N-1HZ AWB
12853.00	12907.00	Blind Drilling (std)	Projection to bit	DOLPH 1N-1HZ AWB



Actual Wellpath Report

DOLPH 1N-1HZ AWP

Page 7 of 7



REFERENCE WELLPATH IDENTIFICATION			
Operator	KERR-MCGEE OIL & GAS ONSHORE LP	Slot	SLOT#20 DOLPH 1N-1HZ (662'FSL & 695'FEL, SEC.1)
Area	COLORADO	Well	DOLPH 1N-1HZ
Field	WELD COUNTY (KERR MCGEE)	Wellbore	DOLPH 1N-1HZ AWB
Facility	SEC.01-T2N-R66W		

WELLPATH COMMENTS				
MD [ft]	Inclination [°]	Azimuth [°]	TVD [ft]	Comment
13.00	0.000	209.850	13.00	TIE ON
113.00	0.270	209.850	113.00	BEGIN GYRO SURVEYS
1368.00	0.410	177.360	1367.98	TIE ONTO GYRO SURVEYS
1540.00	1.400	160.000	1539.95	BEGIN BHI MWD+IFR SURVEYS
7911.00	88.962	0.329	7252.58	7" CASING POINT
12853.00	87.830	1.780	7264.20	LAST BHI MWD+IFR SURVEY
12907.00	87.830	1.780	7266.24	PROJECTION TO BIT