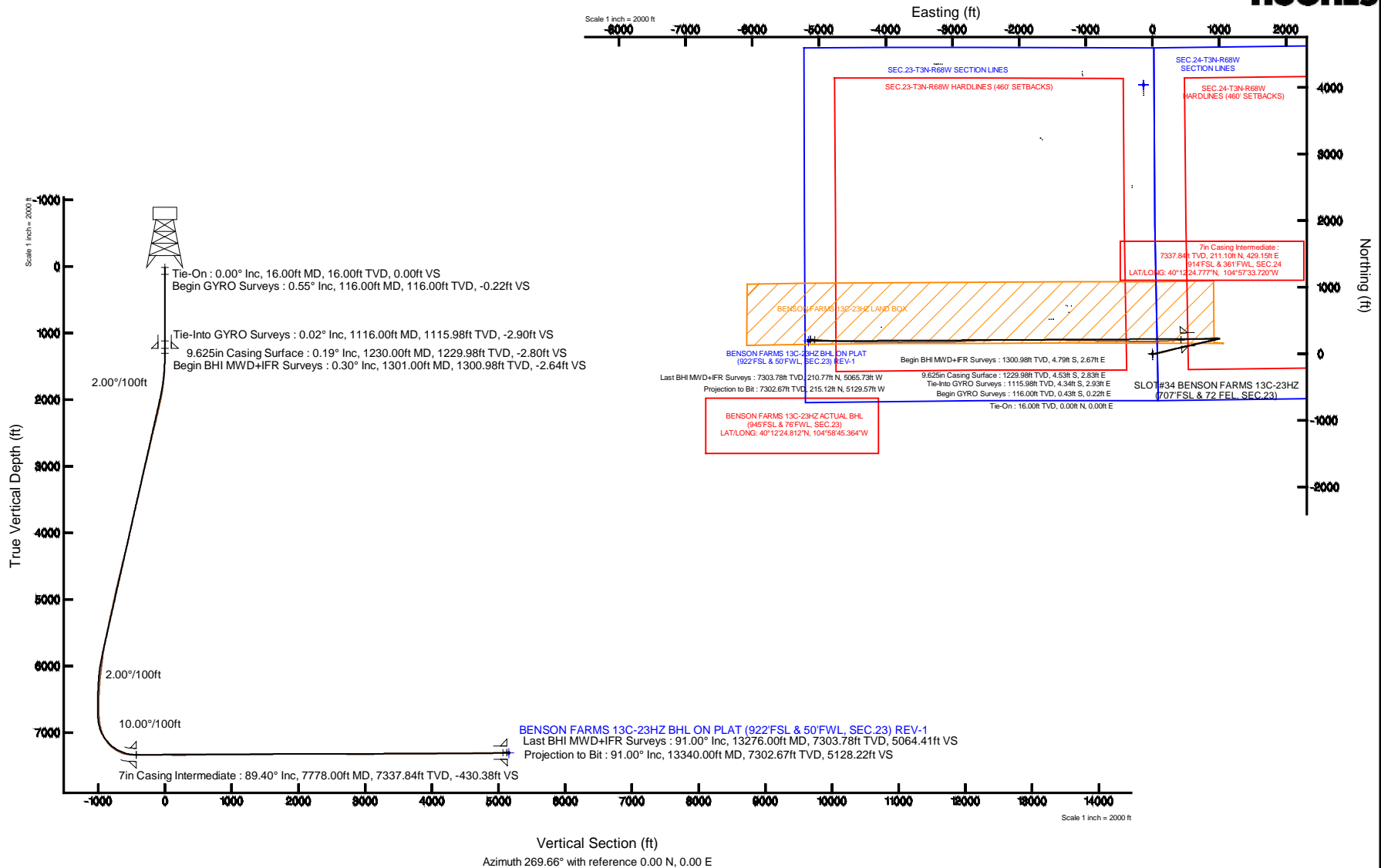


# KERR-MCGEE OIL & GAS ONSHORE LP

Location: COLORADO Slot: SLOT#34 BENSON FARMS 13C-23HZ (707FSL & 72 FEL, SEC.23)  
 Field: WELD COUNTY (KERR MCGEE) Well: BENSON FARMS 13C-23HZ  
 Facility: SEC.23-T3N-R68W Wellbore: BENSON FARMS 13C-23HZ PWB

Plot reference wellpath is BENSON FARMS 13C-23HZ (REV-A.0) PWP

True vertical depths are referenced to XTREME 23 (16KB) (RKB)	Grid System: NAD83 / Lambert Colorado SP, Northern Zone (501), US feet
Measured depths are referenced to XTREME 23 (16KB) (RKB)	North Reference: True north
XTREME 23 (16KB) (RKB) to Mean Sea Level: 4977 feet	Scale: True distance
Mean Sea Level to Mud line (At Slot: SLOT#34 BENSON FARMS 13C-23HZ (707FSL & 72 FEL, SEC.23)): 0 feet	Depths are in feet
Coordinates are in feet referenced to Slot	Created by: preccan on 14/Oct/2014



REFERENCE WELLPATH IDENTIFICATION			
Operator	KERR-MCGEE OIL & GAS ONSHORE LP	Slot	SLOT#34 BENSON FARMS 13C-23HZ (707'FSL & 72 FEL, SEC.23)
Area	COLORADO	Well	BENSON FARMS 13C-23HZ
Field	WELD COUNTY (KERR MCGEE)	Wellbore	BENSON FARMS 13C-23HZ AWB
Facility	SEC.23-T3N-R68W		

REPORT SETUP INFORMATION			
Projection System	NAD83 / Lambert Colorado SP, Northern Zone (501), US feet	Software System	WellArchitect® 4.0.0
North Reference	True	User	Precain
Scale	0.999957	Report Generated	14/Oct/2014 at 16:25
Convergence at slot	n/a	Database/Source file	WellArchitectDB/BENSON_FARMS_13C-23HZ_AWB.xml

WELLPATH LOCATION						
	Local coordinates		Grid coordinates		Geographic coordinates	
	North[ft]	East[ft]	Easting[US ft]	Northing[US ft]	Latitude	Longitude
Slot Location	-4352.07	3155.45	3150572.13	1318456.26	40°12'22.691"N	104°57'39.251"W
Facility Reference Pt			3147390.98	1322789.28	40°13'05.700"N	104°58'19.920"W
Field Reference Pt			<b>3197771.84</b>	<b>1268891.29</b>	40°04'09.600"N	104°47'36.000"W

WELLPATH DATUM			
Calculation method	Minimum curvature	XTREME 23 (16'KB) (RKB) to Facility Vertical Datum	4977.00ft
Horizontal Reference Pt	Slot	XTREME 23 (16'KB) (RKB) to Mean Sea Level	4977.00ft
Vertical Reference Pt	XTREME 23 (16'KB) (RKB)	XTREME 23 (16'KB) (RKB) to Mud Line at Slot (SLOT#34 BENSON FARMS 13C-23HZ (707'FSL & 72 FEL, SEC.23))	4977.00ft
MD Reference Pt	XTREME 23 (16'KB) (RKB)	Section Origin	N 0.00, E 0.00 ft
Field Vertical Reference	Mean Sea Level	Section Azimuth	269.66°

REFERENCE WELLPATH IDENTIFICATION			
Operator	KERR-MCGEE OIL & GAS ONSHORE LP	Slot	SLOT#34 BENSON FARMS 13C-23HZ (707'FSL & 72 FEL, SEC.23)
Area	COLORADO	Well	BENSON FARMS 13C-23HZ
Field	WELD COUNTY (KERR MCGEE)	Wellbore	BENSON FARMS 13C-23HZ AWP
Facility	SEC.23-T3N-R68W		

### WELLPATH DATA (153 stations) † = interpolated/extrapolated station

MD [ft]	Inclination [°]	Azimuth [°]	TVD [ft]	Vert Sect [ft]	North [ft]	East [ft]	Latitude	Longitude	DLS [°/100ft]	Comments
0.00†	0.000	152.830	0.00	0.00	0.00	0.00	40°12'22.691"N	104°57'39.251"W	0.00	
16.00	0.000	152.830	16.00	0.00	0.00	0.00	40°12'22.691"N	104°57'39.251"W	0.00	Tie-On
116.00	0.550	152.830	116.00	-0.22	-0.43	0.22	40°12'22.687"N	104°57'39.248"W	0.55	Begin GYRO Surveys
216.00	0.120	260.660	216.00	-0.33	-0.87	0.34	40°12'22.682"N	104°57'39.247"W	0.60	
316.00	0.340	83.650	316.00	-0.52	-0.86	0.53	40°12'22.683"N	104°57'39.244"W	0.46	
416.00	0.690	137.310	415.99	-1.22	-1.26	1.23	40°12'22.678"N	104°57'39.235"W	0.56	
516.00	0.150	163.320	515.99	-1.66	-1.83	1.68	40°12'22.673"N	104°57'39.229"W	0.56	
616.00	0.420	107.650	615.99	-2.05	-2.07	2.06	40°12'22.671"N	104°57'39.224"W	0.36	
716.00	0.470	187.330	715.99	-2.34	-2.59	2.36	40°12'22.665"N	104°57'39.221"W	0.57	
816.00	0.210	84.460	815.99	-2.47	-2.98	2.49	40°12'22.662"N	104°57'39.219"W	0.56	
916.00	0.500	143.450	915.98	-2.91	-3.31	2.93	40°12'22.658"N	104°57'39.213"W	0.43	
1016.00	0.410	200.930	1015.98	-3.04	-3.99	3.06	40°12'22.652"N	104°57'39.212"W	0.44	
1116.00	0.020	203.470	1115.98	-2.90	-4.34	2.93	40°12'22.648"N	104°57'39.213"W	0.39	Tie-Into GYRO Surveys
1301.00	0.300	210.300	1300.98	-2.64	-4.79	2.67	40°12'22.644"N	104°57'39.217"W	0.15	Begin BHI MWD+IFR Surveys
1395.00	0.900	78.300	1394.98	-3.24	-4.85	3.27	40°12'22.643"N	104°57'39.209"W	1.19	
1523.00	2.400	65.100	1522.92	-6.67	-3.52	6.69	40°12'22.656"N	104°57'39.165"W	1.20	
1584.00	4.300	67.100	1583.81	-9.94	-2.09	9.95	40°12'22.670"N	104°57'39.123"W	3.12	
1674.00	5.500	76.200	1673.48	-17.25	0.25	17.25	40°12'22.693"N	104°57'39.029"W	1.58	
1765.00	6.700	87.200	1763.97	-26.79	1.55	26.79	40°12'22.706"N	104°57'38.906"W	1.84	
1857.00	8.400	89.400	1855.17	-38.88	1.88	38.87	40°12'22.710"N	104°57'38.750"W	1.87	
1949.00	10.500	83.000	1945.92	-53.93	2.97	53.91	40°12'22.720"N	104°57'38.556"W	2.55	
2042.00	12.600	85.800	2037.03	-72.47	4.75	72.44	40°12'22.738"N	104°57'38.317"W	2.34	
2134.00	13.700	77.400	2126.62	-93.13	7.86	93.08	40°12'22.769"N	104°57'38.051"W	2.39	
2226.00	12.700	74.300	2216.19	-113.52	12.97	113.45	40°12'22.819"N	104°57'37.789"W	1.33	
2318.00	13.600	79.800	2305.78	-133.93	17.62	133.83	40°12'22.865"N	104°57'37.526"W	1.67	
2411.00	14.700	77.100	2395.96	-156.22	22.20	156.10	40°12'22.910"N	104°57'37.239"W	1.38	
2503.00	14.100	73.000	2485.07	-178.35	28.08	178.19	40°12'22.968"N	104°57'36.954"W	1.29	
2596.00	13.700	72.400	2575.35	-199.72	34.72	199.52	40°12'23.034"N	104°57'36.679"W	0.46	
2688.00	13.300	70.800	2664.81	-220.14	41.49	219.90	40°12'23.101"N	104°57'36.417"W	0.59	
2871.00	13.700	72.500	2842.75	-260.77	54.93	260.45	40°12'23.234"N	104°57'35.894"W	0.31	
2964.00	14.700	76.700	2932.91	-282.79	60.96	282.44	40°12'23.293"N	104°57'35.611"W	1.54	
3056.00	13.800	76.100	3022.08	-304.83	66.28	304.45	40°12'23.346"N	104°57'35.327"W	0.99	
3149.00	12.700	75.700	3112.60	-325.53	71.47	325.12	40°12'23.397"N	104°57'35.061"W	1.19	
3240.00	13.600	77.600	3201.22	-345.70	76.24	345.26	40°12'23.444"N	104°57'34.801"W	1.10	
3333.00	12.600	76.800	3291.79	-366.29	80.90	365.82	40°12'23.490"N	104°57'34.536"W	1.09	
3418.00	13.200	78.100	3374.65	-384.83	85.02	384.34	40°12'23.531"N	104°57'34.297"W	0.78	
3503.00	13.300	79.500	3457.39	-403.96	88.81	403.45	40°12'23.569"N	104°57'34.051"W	0.40	
3587.00	14.200	80.600	3538.98	-423.65	92.25	423.12	40°12'23.603"N	104°57'33.798"W	1.12	
3674.00	13.100	80.800	3623.52	-443.93	95.57	443.38	40°12'23.635"N	104°57'33.537"W	1.27	
3759.00	12.700	77.300	3706.38	-462.57	99.16	462.00	40°12'23.671"N	104°57'33.296"W	1.03	
3844.00	13.200	70.600	3789.22	-480.88	104.44	480.27	40°12'23.723"N	104°57'33.061"W	1.86	
3929.00	13.500	71.700	3871.92	-499.49	110.78	498.84	40°12'23.786"N	104°57'32.822"W	0.46	
4015.00	13.200	79.900	3955.61	-518.71	115.65	518.04	40°12'23.834"N	104°57'32.574"W	2.23	
4100.00	11.500	76.700	4038.64	-536.54	119.31	535.85	40°12'23.870"N	104°57'32.345"W	2.16	
4185.00	11.800	79.600	4121.89	-553.35	122.82	552.64	40°12'23.905"N	104°57'32.128"W	0.77	

REFERENCE WELLPATH IDENTIFICATION			
Operator	KERR-MCGEE OIL & GAS ONSHORE LP	Slot	SLOT#34 BENSON FARMS 13C-23HZ (707'FSL & 72 FEL, SEC.23)
Area	COLORADO	Well	BENSON FARMS 13C-23HZ
Field	WELD COUNTY (KERR MCGEE)	Wellbore	BENSON FARMS 13C-23HZ AWB
Facility	SEC.23-T3N-R68W		

WELLPATH DATA (153 stations) † = interpolated/extrapolated station										
MD [ft]	Inclination [°]	Azimuth [°]	TVD [ft]	Vert Sect [ft]	North [ft]	East [ft]	Latitude	Longitude	DLS [°/100ft]	Comments
4270.00	13.300	77.800	4204.85	-571.48	126.46	570.75	40°12'23.941"N	104°57'31.895"W	1.82	
4356.00	15.200	77.100	4288.20	-592.16	131.07	591.41	40°12'23.986"N	104°57'31.629"W	2.22	
4441.00	15.100	77.100	4370.25	-613.85	136.03	613.06	40°12'24.035"N	104°57'31.350"W	0.12	
4528.00	14.200	77.400	4454.42	-635.34	140.88	634.52	40°12'24.083"N	104°57'31.073"W	1.04	
4613.00	12.800	76.600	4537.07	-654.70	145.34	653.86	40°12'24.127"N	104°57'30.824"W	1.66	
4696.00	14.300	76.300	4617.76	-673.63	149.90	672.76	40°12'24.172"N	104°57'30.580"W	1.81	
4781.00	14.200	76.700	4700.14	-694.00	154.78	693.10	40°12'24.220"N	104°57'30.318"W	0.17	
4867.00	14.000	75.600	4783.55	-714.37	159.80	713.44	40°12'24.270"N	104°57'30.056"W	0.39	
4952.00	13.000	74.200	4866.20	-733.56	164.96	732.60	40°12'24.321"N	104°57'29.809"W	1.24	
5037.00	11.800	74.100	4949.22	-751.15	169.94	750.16	40°12'24.370"N	104°57'29.582"W	1.41	
5122.00	12.400	77.200	5032.33	-768.43	174.34	767.42	40°12'24.414"N	104°57'29.360"W	1.04	
5207.00	13.200	81.000	5115.22	-786.94	177.88	785.91	40°12'24.449"N	104°57'29.122"W	1.37	
5293.00	12.800	79.000	5199.01	-806.00	181.24	804.96	40°12'24.482"N	104°57'28.876"W	0.70	
5378.00	11.100	78.500	5282.17	-823.29	184.67	822.22	40°12'24.516"N	104°57'28.654"W	2.00	
5463.00	11.700	75.200	5365.49	-839.66	188.50	838.57	40°12'24.554"N	104°57'28.443"W	1.04	
5548.00	12.600	78.200	5448.59	-857.09	192.60	855.98	40°12'24.594"N	104°57'28.219"W	1.29	
5633.00	13.000	82.500	5531.48	-875.66	195.74	874.53	40°12'24.625"N	104°57'27.980"W	1.22	
5719.00	13.000	75.400	5615.28	-894.64	199.44	893.48	40°12'24.662"N	104°57'27.735"W	1.86	
5804.00	10.200	71.900	5698.53	-911.07	204.19	909.89	40°12'24.709"N	104°57'27.524"W	3.40	
5889.00	8.300	69.700	5782.43	-924.01	208.66	922.80	40°12'24.753"N	104°57'27.357"W	2.27	
5974.00	6.700	68.600	5866.70	-934.40	212.60	933.17	40°12'24.792"N	104°57'27.224"W	1.89	
6059.00	7.200	67.200	5951.07	-943.95	216.47	942.70	40°12'24.830"N	104°57'27.101"W	0.62	
6144.00	7.700	67.700	6035.35	-954.16	220.69	952.88	40°12'24.872"N	104°57'26.970"W	0.59	
6230.00	7.900	74.300	6120.56	-965.20	224.48	963.90	40°12'24.909"N	104°57'26.828"W	1.07	
6400.00	3.500	84.800	6289.68	-981.64	228.11	980.32	40°12'24.945"N	104°57'26.616"W	2.65	
6485.00	2.600	83.200	6374.56	-986.14	228.58	984.82	40°12'24.950"N	104°57'26.558"W	1.06	
6570.00	2.000	80.500	6459.49	-989.52	229.05	988.20	40°12'24.954"N	104°57'26.514"W	0.72	
6655.00	1.000	354.500	6544.47	-990.92	230.03	989.59	40°12'24.964"N	104°57'26.497"W	2.56	
6741.00	0.700	322.300	6630.46	-990.53	231.20	989.20	40°12'24.975"N	104°57'26.502"W	0.64	
6811.00	0.900	310.100	6700.45	-989.86	231.89	988.51	40°12'24.982"N	104°57'26.510"W	0.37	
6826.00	0.800	309.700	6715.45	-989.69	232.03	988.34	40°12'24.984"N	104°57'26.513"W	0.67	
6911.00	4.900	276.800	6800.33	-985.63	232.84	984.28	40°12'24.992"N	104°57'26.565"W	5.00	
6996.00	10.300	274.900	6884.55	-974.45	233.92	973.10	40°12'25.002"N	104°57'26.709"W	6.36	
7081.00	16.100	272.800	6967.27	-955.10	235.15	953.74	40°12'25.015"N	104°57'26.959"W	6.85	
7167.00	25.200	270.400	7047.66	-924.82	235.86	923.45	40°12'25.022"N	104°57'27.349"W	10.62	
7252.00	34.400	265.800	7121.35	-882.67	234.22	881.32	40°12'25.005"N	104°57'27.892"W	11.15	
7337.00	43.400	264.200	7187.44	-829.54	229.50	828.21	40°12'24.959"N	104°57'28.577"W	10.65	
7380.00	48.700	266.900	7217.27	-798.67	227.13	797.36	40°12'24.935"N	104°57'28.974"W	13.13	
7422.00	53.900	267.400	7243.53	-765.94	225.51	764.63	40°12'24.919"N	104°57'29.396"W	12.42	
7508.00	63.400	268.400	7288.22	-692.61	222.85	691.32	40°12'24.893"N	104°57'30.341"W	11.09	
7593.00	73.700	268.200	7319.26	-613.63	220.51	612.35	40°12'24.870"N	104°57'31.359"W	12.12	
7678.00	86.200	266.900	7334.06	-530.16	216.92	528.90	40°12'24.835"N	104°57'32.434"W	14.78	
7732.00	88.000	266.800	7336.80	-476.30	213.95	475.05	40°12'24.805"N	104°57'33.128"W	3.34	
7778.00†	89.400	266.080	7337.84	-430.38	211.10	429.15	40°12'24.777"N	104°57'33.720"W	3.42	7" Casing Point
7847.00	91.500	265.000	7337.30	-361.57	205.73	360.37	40°12'24.724"N	104°57'34.606"W	3.42	

REFERENCE WELLPATH IDENTIFICATION			
Operator	KERR-MCGEE OIL & GAS ONSHORE LP	Slot	SLOT#34 BENSON FARMS 13C-23HZ (707'FSL & 72 FEL, SEC.23)
Area	COLORADO	Well	BENSON FARMS 13C-23HZ
Field	WELD COUNTY (KERR MCGEE)	Wellbore	BENSON FARMS 13C-23HZ AWP
Facility	SEC.23-T3N-R68W		

### WELLPATH DATA (153 stations)

MD [ft]	Inclination [°]	Azimuth [°]	TVD [ft]	Vert Sect [ft]	North [ft]	East [ft]	Latitude	Longitude	DLS [°/100ft]	Comments
7932.00	90.900	265.600	7335.52	-276.83	198.77	275.67	40°12'24.655"N	104°57'35.698"W	1.00	
8018.00	89.900	266.800	7334.92	-191.00	193.07	189.87	40°12'24.599"N	104°57'36.804"W	1.82	
8103.00	89.000	268.100	7335.73	-106.07	189.29	104.96	40°12'24.562"N	104°57'37.898"W	1.86	
8188.00	88.300	268.500	7337.74	-21.11	186.77	20.02	40°12'24.537"N	104°57'38.993"W	0.95	
8273.00	88.700	270.200	7339.96	63.85	185.80	-64.94	40°12'24.527"N	104°57'40.088"W	2.05	
8358.00	88.700	270.700	7341.89	148.82	186.47	-149.92	40°12'24.534"N	104°57'41.183"W	0.59	
8444.00	90.300	270.500	7342.64	234.80	187.37	-235.91	40°12'24.543"N	104°57'42.292"W	1.87	
8529.00	92.500	271.000	7340.56	319.76	188.48	-320.87	40°12'24.554"N	104°57'43.387"W	2.65	
8614.00	91.100	270.400	7337.89	404.70	189.52	-405.82	40°12'24.564"N	104°57'44.481"W	1.79	
8699.00	91.300	270.600	7336.11	489.67	190.26	-490.80	40°12'24.571"N	104°57'45.577"W	0.33	
8784.00	91.400	270.800	7334.11	574.63	191.30	-575.77	40°12'24.581"N	104°57'46.672"W	0.26	
8869.00	91.400	271.200	7332.03	659.59	192.78	-660.73	40°12'24.596"N	104°57'47.767"W	0.47	
8955.00	91.100	271.100	7330.16	745.54	194.51	-746.69	40°12'24.613"N	104°57'48.875"W	0.37	
9040.00	90.400	270.800	7329.05	830.51	195.92	-831.67	40°12'24.627"N	104°57'49.970"W	0.90	
9125.00	91.000	271.000	7328.01	915.48	197.25	-916.65	40°12'24.640"N	104°57'51.065"W	0.74	
9210.00	90.400	270.900	7326.97	1000.45	198.66	-1001.63	40°12'24.654"N	104°57'52.161"W	0.72	
9295.00	90.000	270.700	7326.67	1085.43	199.85	-1086.63	40°12'24.666"N	104°57'53.256"W	0.53	
9381.00	90.100	271.000	7326.60	1171.42	201.13	-1172.62	40°12'24.678"N	104°57'54.364"W	0.37	
9466.00	90.600	271.400	7326.08	1256.38	202.91	-1257.59	40°12'24.696"N	104°57'55.460"W	0.75	
9551.00	90.400	271.000	7325.34	1341.35	204.69	-1342.57	40°12'24.713"N	104°57'56.555"W	0.53	
9636.00	90.600	271.000	7324.59	1426.32	206.17	-1427.56	40°12'24.728"N	104°57'57.650"W	0.24	
9721.00	90.500	270.600	7323.78	1511.30	207.36	-1512.54	40°12'24.740"N	104°57'58.746"W	0.49	
9807.00	91.200	271.100	7322.50	1597.27	208.63	-1598.52	40°12'24.752"N	104°57'59.854"W	1.00	
9892.00	90.200	270.200	7321.46	1682.25	209.60	-1683.51	40°12'24.762"N	104°58'00.949"W	1.58	
9977.00	89.800	269.900	7321.46	1767.25	209.67	-1768.51	40°12'24.762"N	104°58'02.045"W	0.59	
10062.00	89.500	269.900	7321.98	1852.25	209.52	-1853.51	40°12'24.761"N	104°58'03.140"W	0.35	
10147.00	89.700	270.000	7322.58	1937.24	209.45	-1938.51	40°12'24.760"N	104°58'04.236"W	0.26	
10232.00	90.200	269.600	7322.65	2022.24	209.15	-2023.51	40°12'24.757"N	104°58'05.331"W	0.75	
10317.00	90.400	269.500	7322.21	2107.24	208.48	-2108.50	40°12'24.750"N	104°58'06.427"W	0.26	
10403.00	90.100	269.500	7321.83	2193.24	207.73	-2194.50	40°12'24.743"N	104°58'07.535"W	0.35	
10488.00	90.000	269.200	7321.76	2278.24	206.77	-2279.49	40°12'24.733"N	104°58'08.630"W	0.37	
10573.00	89.600	268.700	7322.05	2363.23	205.21	-2364.48	40°12'24.718"N	104°58'09.726"W	0.75	
10658.00	89.700	268.400	7322.57	2448.21	203.06	-2449.45	40°12'24.696"N	104°58'10.821"W	0.37	
10743.00	89.300	268.300	7323.31	2533.19	200.61	-2534.41	40°12'24.672"N	104°58'11.916"W	0.49	
10829.00	89.600	268.100	7324.14	2619.16	197.91	-2620.36	40°12'24.645"N	104°58'13.024"W	0.42	
10914.00	88.700	267.200	7325.40	2704.09	194.43	-2705.28	40°12'24.611"N	104°58'14.118"W	1.50	
10999.00	89.600	267.400	7326.66	2789.01	190.42	-2790.18	40°12'24.571"N	104°58'15.212"W	1.08	
11084.00	89.400	266.600	7327.40	2873.91	185.98	-2875.05	40°12'24.527"N	104°58'16.306"W	0.97	
11170.00	90.600	267.100	7327.40	2959.81	181.25	-2960.92	40°12'24.480"N	104°58'17.413"W	1.51	
11255.00	90.400	268.300	7326.66	3044.75	177.84	-3045.85	40°12'24.447"N	104°58'18.508"W	1.43	
11340.00	90.700	268.800	7325.85	3129.73	175.69	-3130.82	40°12'24.425"N	104°58'19.603"W	0.69	
11425.00	90.400	269.900	7325.03	3214.73	174.72	-3215.81	40°12'24.416"N	104°58'20.698"W	1.34	
11510.00	90.600	270.300	7324.29	3299.72	174.87	-3300.80	40°12'24.417"N	104°58'21.794"W	0.53	
11596.00	90.800	270.400	7323.24	3385.71	175.40	-3386.80	40°12'24.422"N	104°58'22.902"W	0.26	
11681.00	91.200	270.200	7321.75	3470.69	175.84	-3471.78	40°12'24.426"N	104°58'23.997"W	0.53	

REFERENCE WELLPATH IDENTIFICATION			
Operator	KERR-MCGEE OIL & GAS ONSHORE LP	Slot	SLOT#34 BENSON FARMS 13C-23HZ (707'FSL & 72 FEL, SEC.23)
Area	COLORADO	Well	BENSON FARMS 13C-23HZ
Field	WELD COUNTY (KERR MCGEE)	Wellbore	BENSON FARMS 13C-23HZ AWP
Facility	SEC.23-T3N-R68W		

WELLPATH DATA (153 stations)										
MD [ft]	Inclination [°]	Azimuth [°]	TVD [ft]	Vert Sect [ft]	North [ft]	East [ft]	Latitude	Longitude	DLS [°/100ft]	Comments
11766.00	89.800	269.900	7321.01	3555.68	175.92	-3556.78	40°12'24.427"N	104°58'25.093"W	1.68	
11851.00	89.200	269.500	7321.75	3640.68	175.47	-3641.77	40°12'24.422"N	104°58'26.188"W	0.85	
11936.00	89.800	269.100	7322.50	3725.67	174.43	-3726.76	40°12'24.412"N	104°58'27.284"W	0.85	
12022.00	90.500	270.500	7322.27	3811.67	174.13	-3812.76	40°12'24.409"N	104°58'28.392"W	1.82	
12107.00	90.300	270.300	7321.68	3896.66	174.73	-3897.75	40°12'24.415"N	104°58'29.488"W	0.33	
12191.00	90.600	270.600	7321.02	3980.65	175.39	-3981.75	40°12'24.421"N	104°58'30.570"W	0.51	
12276.00	92.100	270.500	7319.01	4065.61	176.20	-4066.72	40°12'24.429"N	104°58'31.665"W	1.77	
12362.00	91.700	271.000	7316.16	4151.55	177.33	-4152.66	40°12'24.440"N	104°58'32.773"W	0.74	
12447.00	90.100	270.800	7314.83	4236.52	178.66	-4237.64	40°12'24.453"N	104°58'33.868"W	1.90	
12534.00	90.600	270.300	7314.30	4323.51	179.50	-4324.63	40°12'24.461"N	104°58'34.989"W	0.81	
12618.00	90.300	270.800	7313.64	4407.49	180.30	-4408.63	40°12'24.469"N	104°58'36.072"W	0.69	
12703.00	90.400	271.300	7313.12	4492.47	181.86	-4493.61	40°12'24.484"N	104°58'37.167"W	0.60	
12790.00	91.400	271.800	7311.75	4579.41	184.21	-4580.57	40°12'24.507"N	104°58'38.288"W	1.29	
12874.00	91.200	272.200	7309.85	4663.32	187.14	-4664.49	40°12'24.536"N	104°58'39.370"W	0.53	
12960.00	91.000	272.800	7308.19	4749.19	190.89	-4750.39	40°12'24.573"N	104°58'40.477"W	0.74	
13129.00	90.600	273.900	7305.83	4917.82	200.77	-4919.09	40°12'24.670"N	104°58'42.651"W	0.69	
13276.00	91.000	273.900	7303.78	5064.41	210.77	-5065.73	40°12'24.769"N	104°58'44.541"W	0.27	Last BHI MWD+IFR Surveys
13340.00	91.000	273.900	7302.67	5128.22	215.12	-5129.57	40°12'24.812"N	104°58'45.364"W	0.00	Projection to Bit

HOLE & CASING SECTIONS - Ref Wellbore: BENSON FARMS 13C-23HZ AWP Ref Wellpath: BENSON FARMS 13C-23HZ AWP									
String/Diameter	Start MD [ft]	End MD [ft]	Interval [ft]	Start TVD [ft]	End TVD [ft]	Start N/S [ft]	Start E/W [ft]	End N/S [ft]	End E/W [ft]
13.5in Open Hole	16.00	1240.00	1224.00	16.00	1239.98	0.00	0.00	-4.56	2.81
9.625in Casing Surface	16.00	1230.00	1214.00	16.00	1229.98	0.00	0.00	-4.53	2.83
8.75in Open Hole	1240.00	7788.00	6548.00	1239.98	7337.92	-4.56	2.81	210.40	419.18
7in Casing Intermediate	16.00	7778.00	7762.00	16.00	7337.84	0.00	0.00	211.10	429.15
6.125in Open Hole	7788.00	13340.00	5552.00	7337.92	7302.67	210.40	419.18	215.12	-5129.57

REFERENCE WELLPATH IDENTIFICATION			
Operator	KERR-MCGEE OIL & GAS ONSHORE LP	Slot	SLOT#34 BENSON FARMS 13C-23HZ (707'FSL & 72 FEL, SEC.23)
Area	COLORADO	Well	BENSON FARMS 13C-23HZ
Field	WELD COUNTY (KERR MCGEE)	Wellbore	BENSON FARMS 13C-23HZ AWB
Facility	SEC.23-T3N-R68W		

TARGETS									
Name	MD [ft]	TVD [ft]	North [ft]	East [ft]	Grid East [US ft]	Grid North [US ft]	Latitude	Longitude	Shape
SEC.19-T3N-R67W HARDLINES (460' SETBACKS)		29.00	4035.70	-134.59	3150413.01	1322490.88	40°13'02.572"N	104°57'40.986"W	polygon
SEC.19-T3N-R67W SECTION LINES		29.00	4035.70	-134.59	3150413.01	1322490.88	40°13'02.572"N	104°57'40.986"W	polygon
SEC.23-T3N-R68W HARDLINES (460' SETBACKS)		29.00	4035.70	-134.59	3150413.01	1322490.88	40°13'02.572"N	104°57'40.986"W	polygon
SEC.23-T3N-R68W SECTION LINES		29.00	4035.70	-134.59	3150413.01	1322490.88	40°13'02.572"N	104°57'40.986"W	polygon
SEC.24-T3N-R68W HARDLINES (460' SETBACKS)		29.00	4035.70	-134.59	3150413.01	1322490.88	40°13'02.572"N	104°57'40.986"W	polygon
SEC.24-T3N-R68W SECTION LINES		29.00	4035.70	-134.59	3150413.01	1322490.88	40°13'02.572"N	104°57'40.986"W	polygon
BENSON FARMS 13C-23HZ BHL ON PLAT (922'FSL & 50'FWL, SEC.23) REV-1		7310.00	190.32	-5156.17	3145415.14	1318615.22	40°12'24.566"N	104°58'45.707"W	point
BENSON FARMS 13C-23HZ LAND BOX		7310.00	0.00	0.00	3150572.13	1318456.26	40°12'22.691"N	104°57'39.251"W	polygon

WELLPATH COMPOSITION - Ref Wellbore: BENSON FARMS 13C-23HZ AWB Ref Wellpath: BENSON FARMS 13C-23HZ AWP				
Start MD [ft]	End MD [ft]	Positional Uncertainty Model	Log Name/Comment	Wellbore
16.00	1116.00	Generic gyro - continuous (Standard)	MS ENERGY GYRO SURVEYS <116-1116>	BENSON FARMS 13C-23HZ AWB
1116.00	7732.00	NaviTrak (IFR)	BHI MWD+IFR SURVEYS 8 3/4" HOLE <1301-7732>	BENSON FARMS 13C-23HZ AWB
7732.00	13276.00	NaviTrak (IFR)	BHI MWD+IFR SURVEYS 6 1/8" HOLE <7847-13276>	BENSON FARMS 13C-23HZ AWB
13276.00	13340.00	Blind Drilling (std)	Projection to bit	BENSON FARMS 13C-23HZ AWB

REFERENCE WELLPATH IDENTIFICATION			
Operator	KERR-MCGEE OIL & GAS ONSHORE LP	Slot	SLOT#34 BENSON FARMS 13C-23HZ (707'FSL & 72 FEL, SEC.23)
Area	COLORADO	Well	BENSON FARMS 13C-23HZ
Field	WELD COUNTY (KERR MCGEE)	Wellbore	BENSON FARMS 13C-23HZ AWB
Facility	SEC.23-T3N-R68W		

WELLPATH COMMENTS					
MD [ft]	Inclination [°]	Azimuth [°]	TVD [ft]	Comment	
16.00	0.000	152.830	16.00	Tie-On	
116.00	0.550	152.830	116.00	Begin GYRO Surveys	
1116.00	0.020	203.470	1115.98	Tie-Into GYRO Surveys	
1301.00	0.300	210.300	1300.98	Begin BHI MWD+IFR Surveys	
7778.00	89.400	266.080	7337.84	7" Casing Point	
13276.00	91.000	273.900	7303.78	Last BHI MWD+IFR Surveys	
13340.00	91.000	273.900	7302.67	Projection to Bit	