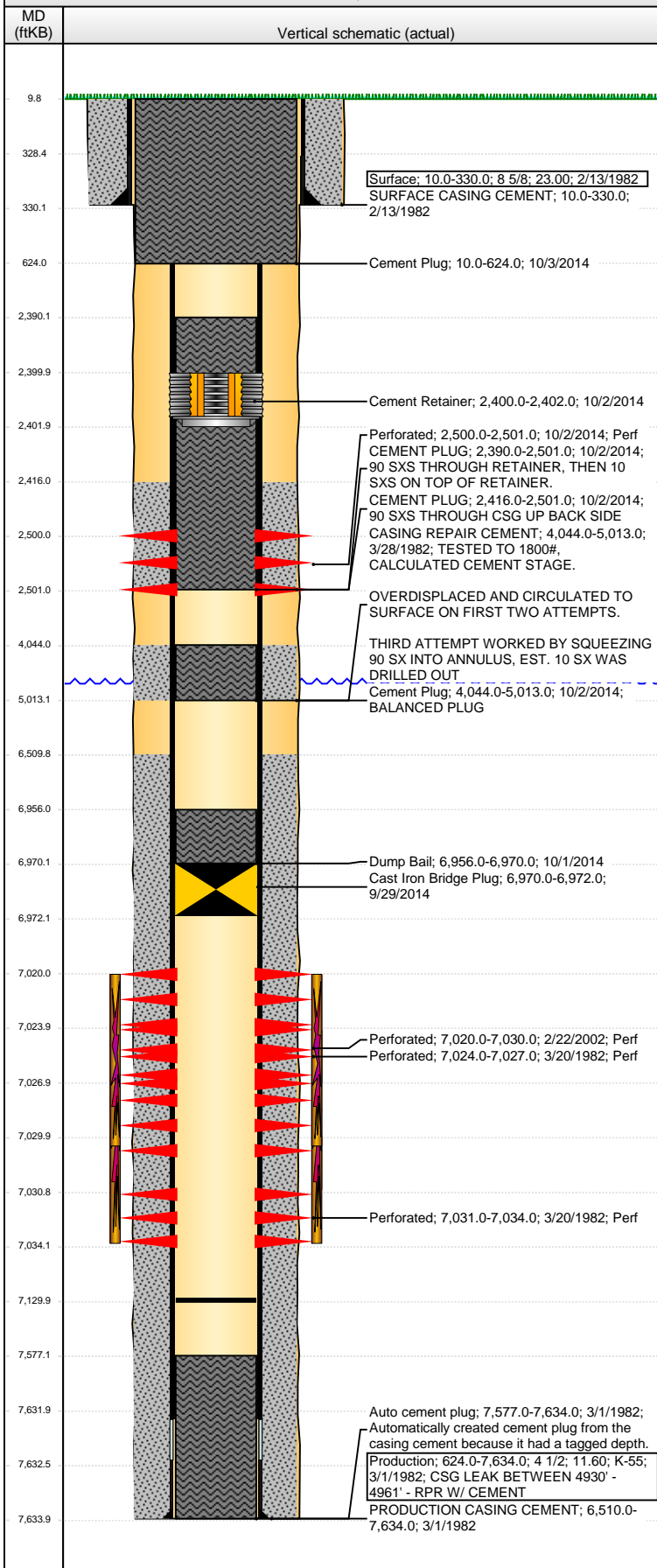


**Well Name: MUIRHEAD 01-01**

VERTICAL - ORIGINAL HOLE, 10/16/2014 9:07:26 AM



## Well Header

API	Business Unit	District	Well Config
05-123-10545	DJ BASIN	15	VERTICAL
Original KB Elevation (ft)	KB - GL / MSL (ftKB)	Spud Date	P & A Date
4,738.00	10.00	2/12/1982	10/6/2014

## Comment

CSG LEAK BETWEEN 4930' - 4961' DURING ORIGINAL DRILL & COMPLETE JOB. TRIED SQUEEZING LEAK, BUT OVERDISPLACED AND CIRCULATED TO SURFACE ON FIRST TWO ATTEMPTS.

THIRD ATTEMPT HELD 1800# WITH 90 SX "G" EST. TO GO INTO ANNULUS

## Directions To Well

WCR 47 AND WCR 50. S 7/10, SE THROUGH THE TANK BATTERY 2/10, NE 1/10 INTO LOCATION.

## Congressional Location

Quarter 1	Quarter 2	Quarter 3	Quarter 4	Section	Township	Twnshp N...	Range	Rng E/W Dir
	NE	SW	SW	1	4	N	65	W

## Bottom Hole Location

North-South Distance (ft)	From N or S Line	East-West Distance (ft)	From E or W Line

## Plug Back Total Depths

Date	Depth (ftKB)	Method	Com
3/12/1982	7,569.0	CASED HOLE LOG	DEPTH LOGGER ON CBL
2/27/2002	7,105.0	TAG	CLEAN OUT TO LAND TUBING
9/24/2014	7,130.0	TAG	C/O 96' OF RAT HOLE

## Wellbore Sections

Section Des	Size (in)	Act Top, MD (ftKB)	Act Btm, MD (ftKB)
SURFACE	12 1/4	10.0	330.0
PRODUCTION	7 7/8	330.0	7,634.0

## Zone Statuses

Zone Name	Status Date	Status	Job
CODELL	4/4/1982	PR	DRILLING/COMPLETION - ORIGINAL, 2/12/1982 00:00
CODELL	3/1/2002	PR	RE-FRAC, 2/21/2002 00:00
CODELL	9/25/2014	TA	HORIZONTAL WELL PREP, 9/23/2014 06:00
CODELL	10/1/2014	P&A	ABANDON WELL, 9/29/2014 06:00

## Casing Strings

### Surface, 330.0ftKB

Casing Description	Run Date	OD (in)	Wt/Len (l...)	Grade	Top, MD (ft...)	MD (ftKB)
Surface	2/13/1982	8 5/8	23.00		10.0	330.0

### Production, 7,634.0ftKB

Casing Description	Run Date	OD (in)	Wt/Len (l...)	Grade	Top, MD (ft...)	MD (ftKB)
Production	3/1/1982	4 1/2	11.60	K-55	10.0	7,634.0

## Cement

Description	Top Depth (ftKB)	Bottom Depth (ftKB)
SURFACE CASING CEMENT	10.0	330.0
PRODUCTION CASING CEMENT	6,510.0	7,634.0
CASING REPAIR CEMENT	4,044.0	5,013.0
Dump Bail	6,956.0	6,970.0
Cement Plug	4,044.0	5,013.0
CEMENT PLUG	2,390.0	2,501.0
CEMENT PLUG	2,416.0	2,501.0
Cement Plug	10.0	624.0

## Tubing Components

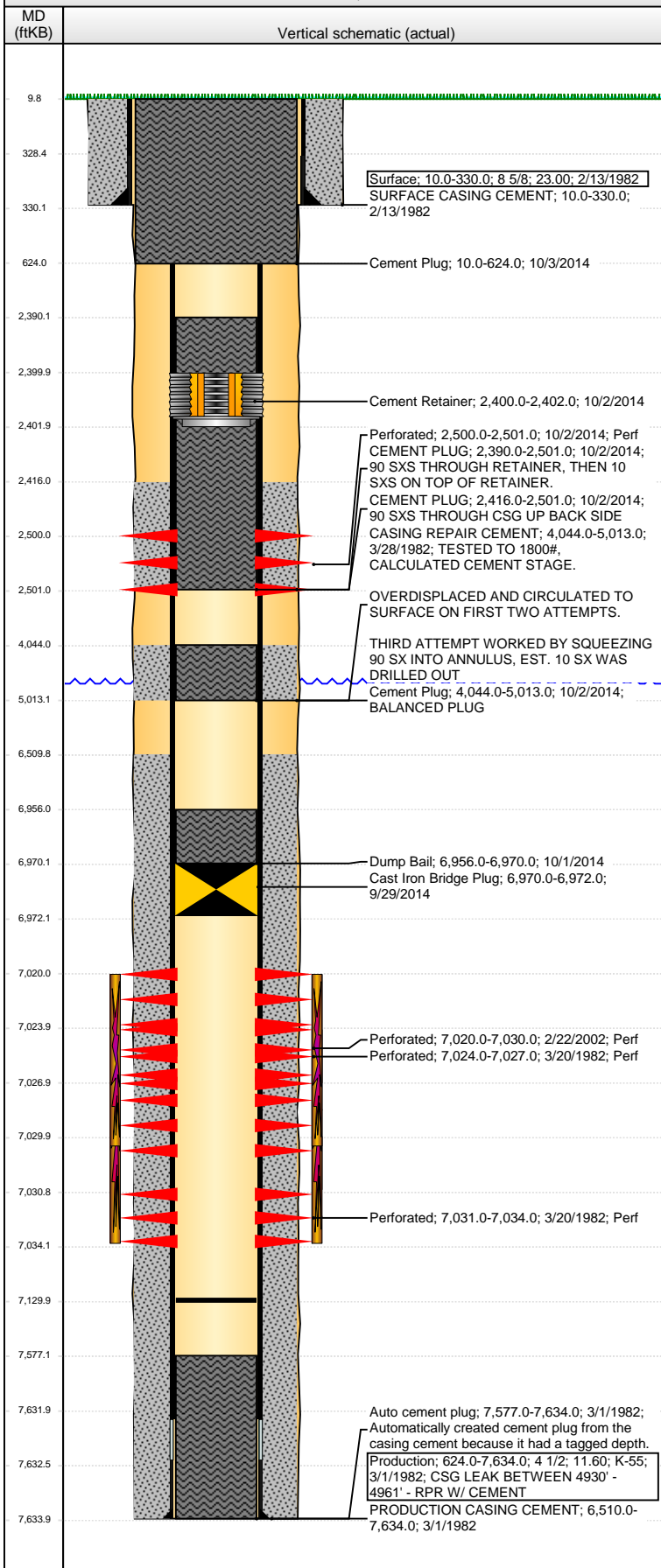
Item Des	OD (in)	Wt (lb/ft)	Grade	Jts	Len (ft)	Btm (ftKB)	Btm (TVD) (ftKB)

## Perforation Data

Zone	Bnch/St g	Entered Shot Total	Top (ftKB)	Btm (ftKB)	Date
CODELL, ORIGINAL HOLE		4	2,500.00	2,501.00	10/2/2014
CODELL, ORIGINAL HOLE		40	7,020.00	7,030.00	2/22/2002
CODELL, ORIGINAL HOLE		7	7,024.00	7,027.00	3/20/1982
CODELL, ORIGINAL HOLE		7	7,031.00	7,034.00	3/20/1982

**Well Name: MUIRHEAD 01-01**

VERTICAL - ORIGINAL HOLE, 10/16/2014 9:07:28 AM



Stimulations & Treatments				
Date	Zone	Primary Job Type		
3/21/1982	CODELL, ORIGINAL HOLE	DRILLING/COMPLETION - ORIGINAL		
Technical Result		Tech Result Details	Tech Result Note	
Comment				
Date	Zone	Primary Job Type		
4/3/1982	CODELL, ORIGINAL HOLE	DRILLING/COMPLETION - ORIGINAL		
Technical Result		Tech Result Details	Tech Result Note	
Failure		Screen-Out		
Comment				
SCREENED OUT				
Date	Zone	Primary Job Type		
2/26/2002	CODELL, ORIGINAL HOLE	RE-FRAC		
Technical Result		Tech Result Details	Tech Result Note	
Comment				
Other In Hole				
Run Date	Des	OD (in)	Top (ftKB)	Btm (ftKB)
9/29/2014	Cast Iron Bridge Plug	3.99	6,970.0	6,972.0
10/2/2014	Cement Retainer	3 7/8	2,400.0	2,402.0
Logs				
Date	Type	Top, MD (ftKB)	Btm, MD (ftKB)	
2/28/1982	COMPENSATED DENSITY	4,000.0	7,626.0	
2/28/1982	INDUCTION	325.0	7,630.0	
3/11/1982	SPECTRALOG	4,200.0	7,578.0	
3/12/1982	CEMENT BOND	4,200.0	7,577.0	
2/21/2002	GAMMA RAY	6,800.0	7,096.0	
3/11/2011	GYRO	10.0	6,950.0	
9/26/2014	CBL/CCL/GR	10.0	6,950.0	