

T7S, R97W, 6th P.M.

Caerus Oil & Gas LLC

PUCKETT #44B-2
SE 1/4 SE 1/4, SECTION 2, T7S, R97W, 6th P.M.
GARFIELD COUNTY, COLORADO

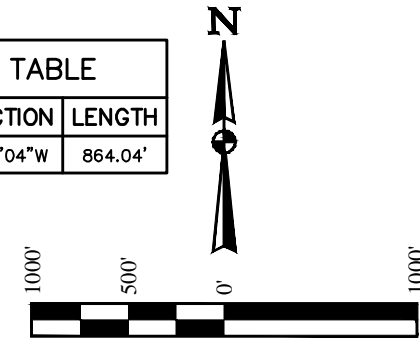
BASIS OF BEARINGS

BASIS OF BEARINGS IS A G.P.S. OBSERVATION

BASIS OF ELEVATION

SPOT ELEVATION AT THE NORTHWEST CORNER OF SECTION 30,
T5S, R95W, 6th P.M. TAKEN FROM THE FORKED GULCH
QUADRANGLE, COLORADO, GARFIELD COUNTY, 7.5 MINUTE SERIES
(TOPOGRAPHICAL MAP) PUBLISHED BY THE UNITED STATES
DEPARTMENT OF THE INTERIOR, GEOLOGICAL SURVEY. SAID
ELEVATION IS MARKED AS BEING 5966 FEET.

LINE TABLE		
LINE	DIRECTION	LENGTH
L1	S72°51'04"W	864.04'



CERTIFICATE

THIS IS TO CERTIFY THAT THE ABOVE PLAT WAS PREPARED FROM FIELD
NOTES OF ACTUAL SURVEYS MADE BY ME OR UNDER MY SUPERVISION
AND THAT THE SAME ARE TRUE AND CORRECT TO THE BEST OF MY
KNOWLEDGE AND BELIEF.



REGISTERED LAND SURVEYOR
REGISTRATION NO. 38130
STATE OF COLORADO

1923 Brass Cap,
0.8 High, Steel Post
Lat: 39.467342°
Long: 108.177942°

PDOP = 1.2



UELS, LLC
Corporate Office * 85 South 200 East
Vernal, UT 84078 * (435) 789-1017

SURVEYED BY: BRADEN BOX, J.C.	DATE: 08-21-14
DRAWN BY: M.D.	DATE DRAWN: 09-16-14
SCALE: 1" = 1000'	REVISED: 00-00-00

WELL LOCATION PLAT

1920 Brass Cap,
1.5' High
Lat: 39.481792°
Long: 108.196089°

1920 Brass Cap,
0.5' High
Lat: 39.481794°
Long: 108.187419°

1920 Brass Cap,
0.6' High, Steel
Post
Lat: 39.481786°
Long: 108.178033°

T6S
T7S
S89°52'11"W - 2626.80' (Meas.)
N89°53'56"W - 2650.16' (Meas.)

TRACT 68

TRACT 65

TRACT 69

TRACT 66

1923 Brass Cap,
1.0' High
Lat: 39.474631°
Long: 108.196078°

1923 Brass Cap,
0.8' High, Pile of
Stones, Steel Post
Lat: 39.474592°
Long: 108.177997°

2

LOT 8

LOT 7

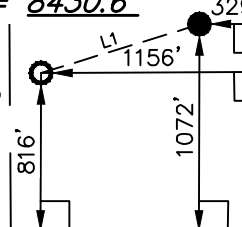
LOT 6

LOT 5

PUCKETT #44B-2

Elev. Ungraded Ground = 8430.6'

Target
Bottom Hole



1923 Brass Cap,
1.5' High
Lat: 39.467408°
Long: 108.196058°

N89°42'45"W - 2654.08' (Meas.)

1923 Brass Cap,
2.0' High
Lat: 39.467350°
Long: 108.187283°

N89°53'38"W - 2637.78' (Meas.)

LEGEND:

- 90° SYMBOL
- PROPOSED WELLHEAD.
- TARGET BOTTOM HOLE.
- SECTION CORNERS LOCATED.

NAD 83 (TARGET BOTTOM HOLE)	NAD 83 (SURFACE LOCATION)
LATITUDE = 39°28'10.51" (39.469586)	LATITUDE = 39°28'13.03" (39.470286)
LONGITUDE = 108°10'55.39" (108.182053)	LONGITUDE = 108°10'44.87" (108.179131)
NAD 27 (TARGET BOTTOM HOLE)	NAD 27 (SURFACE LOCATION)
LATITUDE = 39°28'10.59" (39.469608)	LATITUDE = 39°28'13.11" (39.470308)
LONGITUDE = 108°10'53.10" (108.181417)	LONGITUDE = 108°10'42.58" (108.178494)