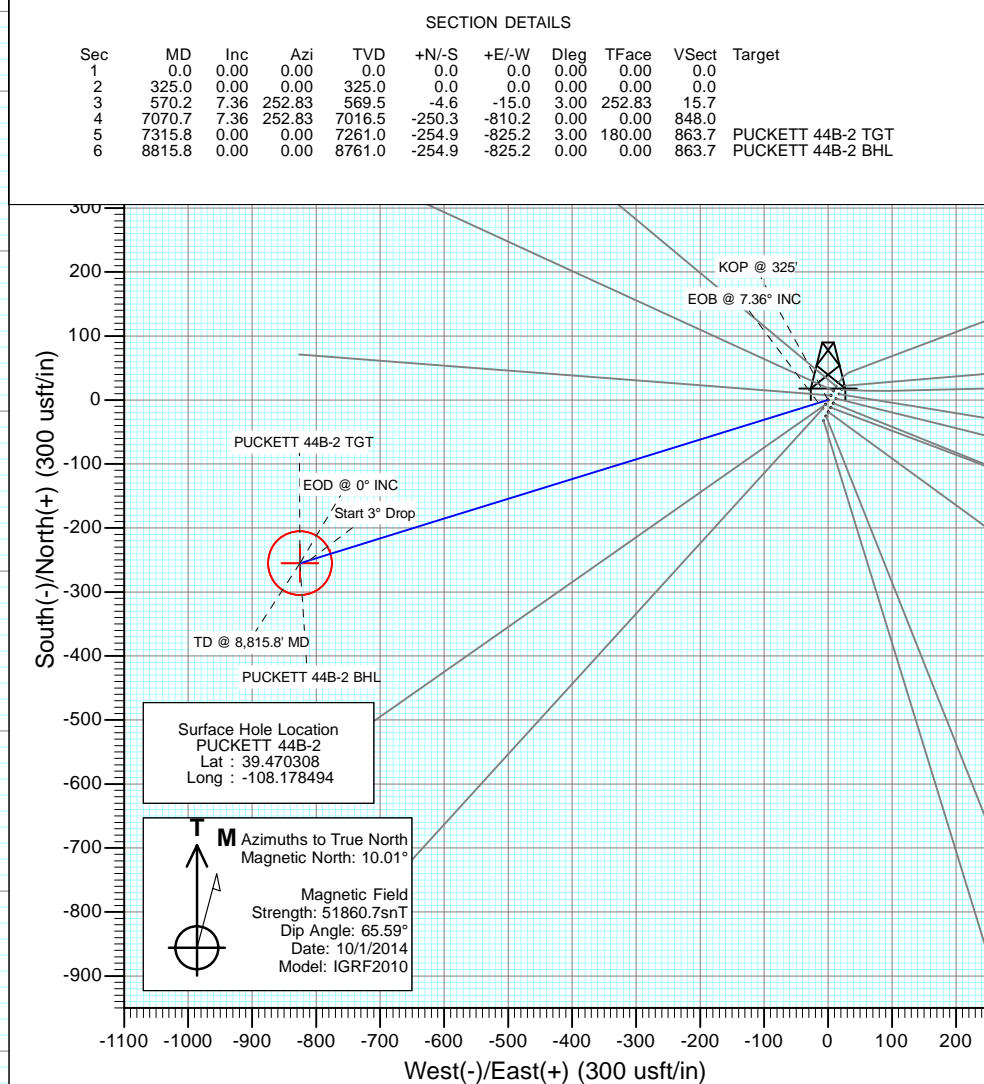
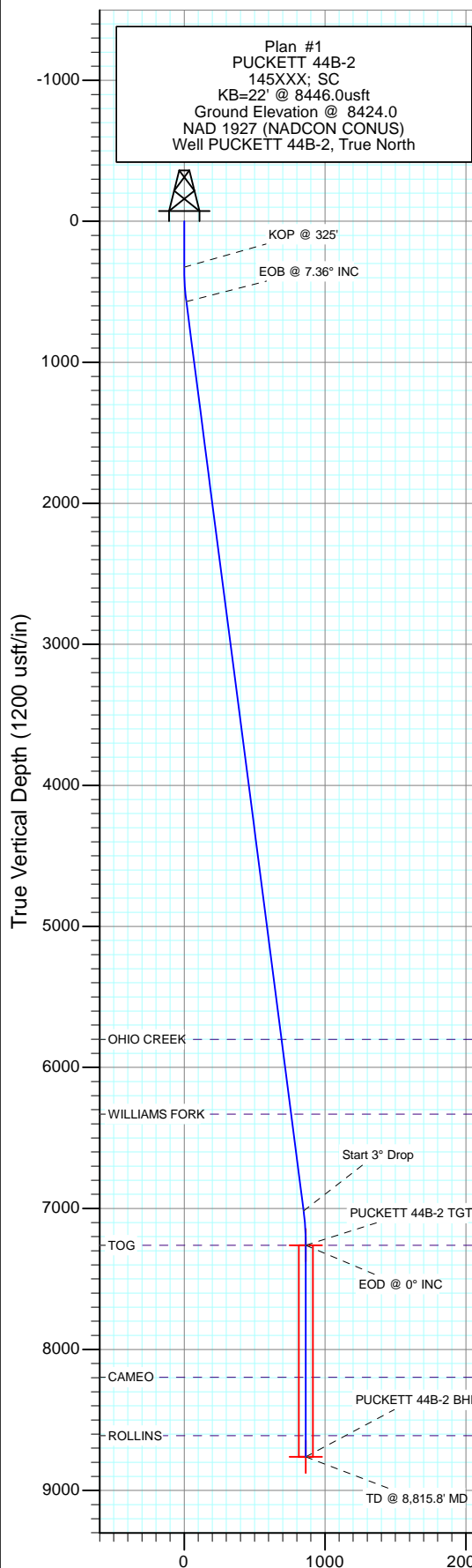
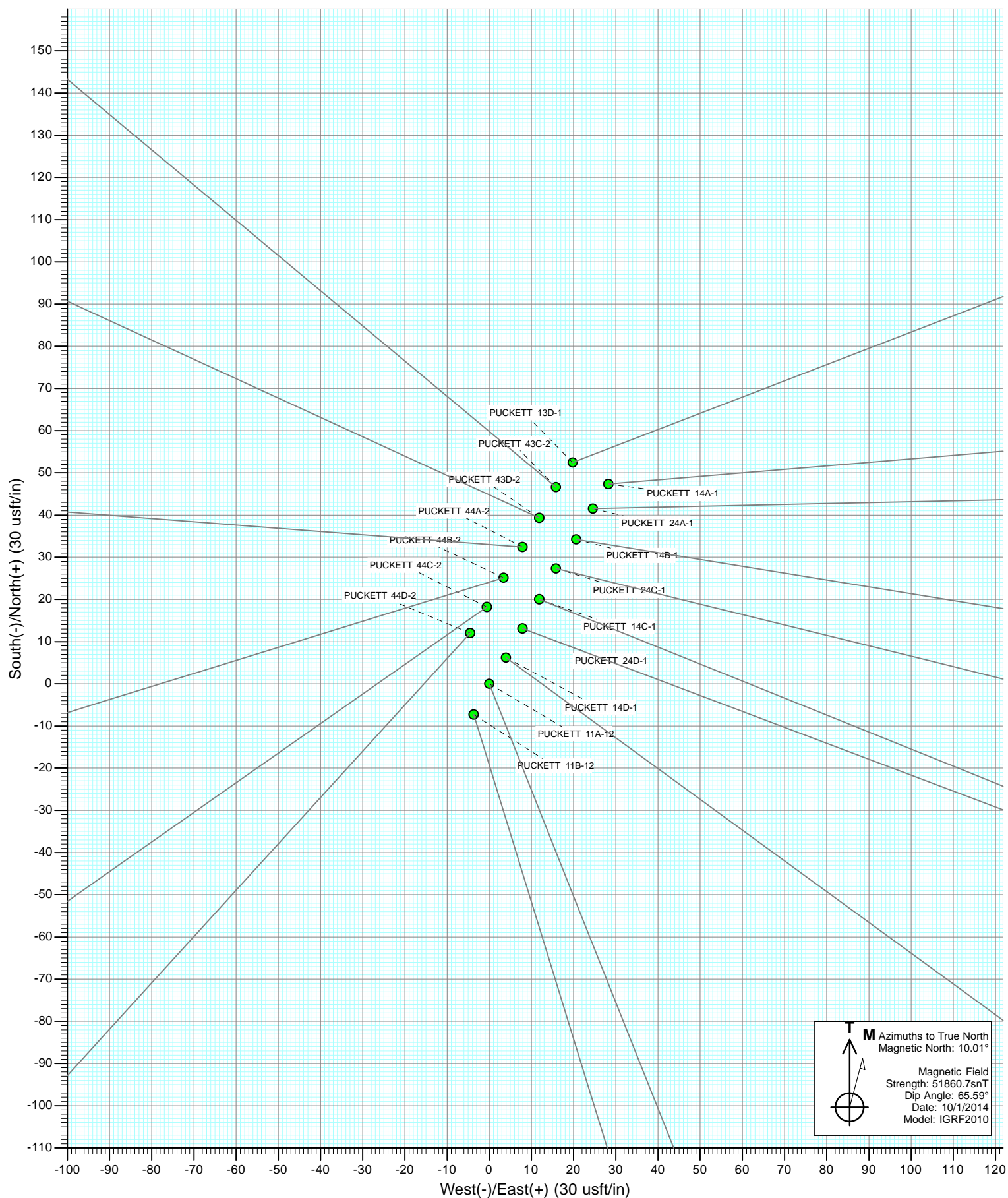


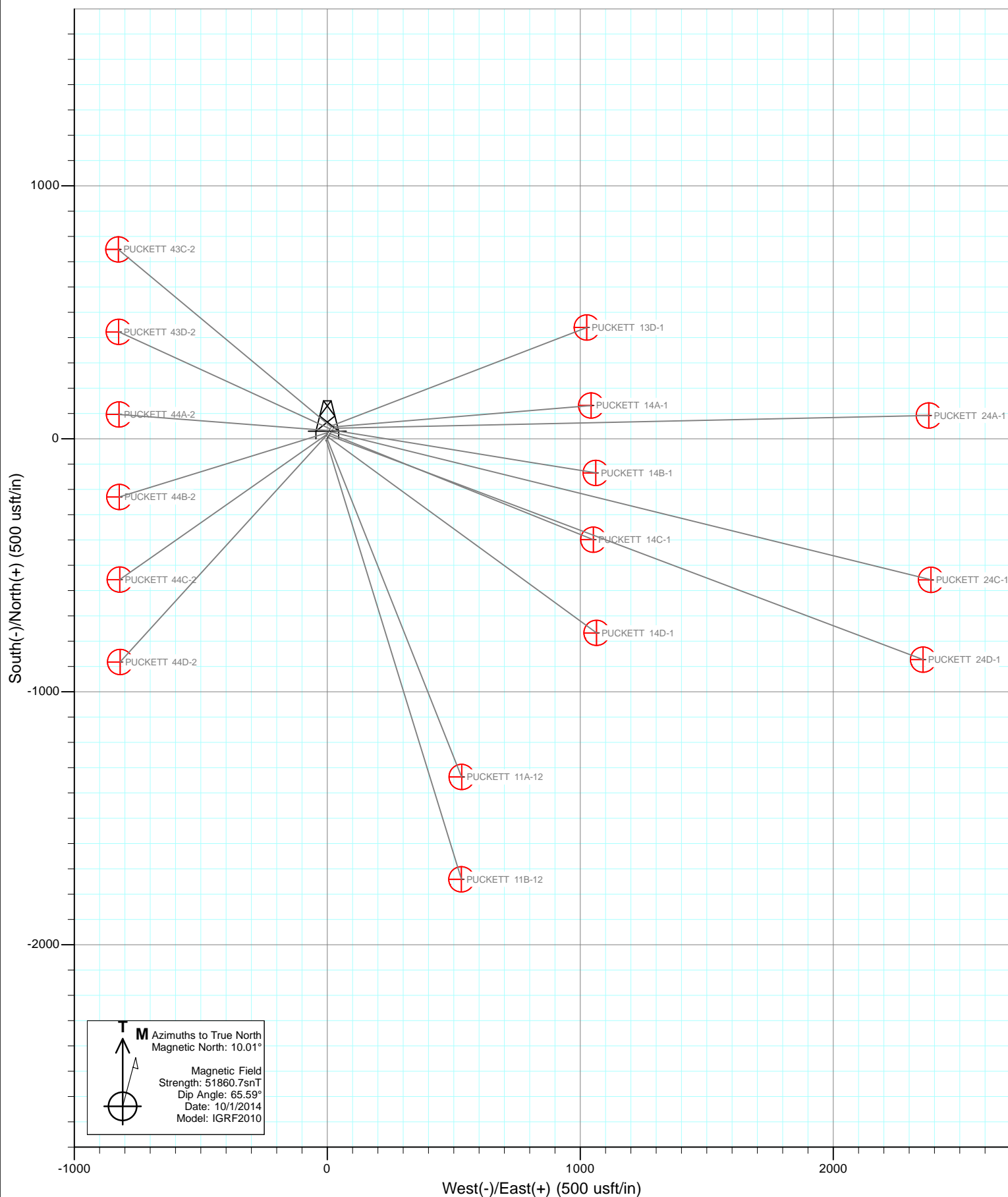


Project: Garfield County, CO
Site: S2-T7S-R97W (Puckett Pad P2)
Well: PUCKETT 44B-2
Wellbore: DD
Design: Plan #1



DESIGN TARGET DETAILS							
Name	+N/-S	+E/-W	Northing	Easting	Latitude	Longitude	
PUCKETT 44B-2 TGT	-254.9	-825.2	607092.75	1243109.40	39.469608	-108.181417	
PUCKETT 44B-2 BHL	-254.9	-825.2	607092.75	1243109.40	39.469608	-108.181417	





Cathedral Energy Services

Planning Report

Database:	USA EDM 5000 Multi Users DB	Local Co-ordinate Reference:	Well PUCKETT 44B-2
Company:	Caerus Oil & Gas (NAD 27)	TVD Reference:	KB=22' @ 8446.0usft
Project:	Garfield County, CO	MD Reference:	KB=22' @ 8446.0usft
Site:	S2-T7S-R97W (Puckett Pad P2)	North Reference:	True
Well:	PUCKETT 44B-2	Survey Calculation Method:	Minimum Curvature
Wellbore:	DD		
Design:	Plan #1		

Project	Garfield County, CO		
Map System:	US State Plane 1927 (Exact solution)	System Datum:	Mean Sea Level
Geo Datum:	NAD 1927 (NADCON CONUS)		
Map Zone:	Colorado Central 502		

Site		S2-T7S-R97W (Puckett Pad P2)			
Site Position:		Northing:	607,291.06 usft	Latitude:	39.470219
From:	Lat/Long	Easting:	1,243,933.75 usft	Longitude:	-108.178519
Position Uncertainty:	0.0 usft	Slot Radius:	13-3/16 "	Grid Convergence:	-1.69 °

Well	PUCKETT 44B-2					
Well Position	+N/-S	0.0 usft	Northing:	607,323.24 usft	Latitude:	39.470308
	+E/-W	0.0 usft	Easting:	1,243,941.76 usft	Longitude:	-108.178494
Position Uncertainty		0.0 usft	Wellhead Elevation:	0.0 usft	Ground Level:	8,424.0 usft

Wellbore	DD				
Magnetics	Model Name	Sample Date	Declination (°)	Dip Angle (°)	Field Strength (nT)
	IGRF2010	10/1/2014	10.00	65.59	51,861

Design	Plan #1			
Audit Notes:				
Version:	Phase:	PLAN	Tie On Depth:	0.0
Vertical Section:	Depth From (TVD) (usft)	+N/-S (usft)	+E/-W (usft)	Direction (°)
	0.0	0.0	0.0	252.83

Plan Sections										
Measured Depth (usft)	Inclination (°)	Azimuth (°)	Vertical Depth (usft)	+N/-S (usft)	+E/-W (usft)	Dogleg Rate (°/100usft)	Build Rate (°/100usft)	Turn Rate (°/100usft)	TFO (°)	Target
0.0	0.00	0.00	0.0	0.0	0.0	0.00	0.00	0.00	0.00	
325.0	0.00	0.00	325.0	0.0	0.0	0.00	0.00	0.00	0.00	
570.2	7.36	252.83	569.5	-4.6	-15.0	3.00	3.00	0.00	252.83	
7,070.7	7.36	252.83	7,016.5	-250.3	-810.2	0.00	0.00	0.00	0.00	
7,315.8	0.00	0.00	7,261.0	-254.9	-825.2	3.00	-3.00	0.00	180.00	PUCKETT 44B-2 TG1
8,815.8	0.00	0.00	8,761.0	-254.9	-825.2	0.00	0.00	0.00	0.00	PUCKETT 44B-2 BHL

Cathedral Energy Services

Planning Report

Database:	USA EDM 5000 Multi Users DB	Local Co-ordinate Reference:	Well PUCKETT 44B-2
Company:	Caerus Oil & Gas (NAD 27)	TVD Reference:	KB=22' @ 8446.0usft
Project:	Garfield County, CO	MD Reference:	KB=22' @ 8446.0usft
Site:	S2-T7S-R97W (Puckett Pad P2)	North Reference:	True
Well:	PUCKETT 44B-2	Survey Calculation Method:	Minimum Curvature
Wellbore:	DD		
Design:	Plan #1		

Planned Survey

Measured Depth (usft)	Inclination (°)	Azimuth (°)	Vertical Depth (usft)	+N/-S (usft)	+E/-W (usft)	Vertical Section (usft)	Dogleg Rate (°/100usft)	Build Rate (°/100u)	Comments / Formations
0.0	0.00	0.00	0.0	0.0	0.0	0.0	0.00	0.00	
100.0	0.00	0.00	100.0	0.0	0.0	0.0	0.00	0.00	
200.0	0.00	0.00	200.0	0.0	0.0	0.0	0.00	0.00	
300.0	0.00	0.00	300.0	0.0	0.0	0.0	0.00	0.00	
325.0	0.00	0.00	325.0	0.0	0.0	0.0	0.00	0.00	KOP @ 325'
400.0	2.25	252.83	400.0	-0.4	-1.4	1.5	3.00	3.00	
500.0	5.25	252.83	499.8	-2.4	-7.7	8.0	3.00	3.00	
570.2	7.36	252.83	569.5	-4.6	-15.0	15.7	3.00	3.00	EOB @ 7.36° INC
600.0	7.36	252.83	599.1	-5.8	-18.7	19.5	0.00	0.00	
700.0	7.36	252.83	698.3	-9.5	-30.9	32.3	0.00	0.00	
800.0	7.36	252.83	797.4	-13.3	-43.1	45.1	0.00	0.00	
900.0	7.36	252.83	896.6	-17.1	-55.4	57.9	0.00	0.00	
1,000.0	7.36	252.83	995.8	-20.9	-67.6	70.7	0.00	0.00	
1,100.0	7.36	252.83	1,095.0	-24.7	-79.8	83.5	0.00	0.00	
1,200.0	7.36	252.83	1,194.1	-28.4	-92.1	96.4	0.00	0.00	
1,300.0	7.36	252.83	1,293.3	-32.2	-104.3	109.2	0.00	0.00	
1,400.0	7.36	252.83	1,392.5	-36.0	-116.5	122.0	0.00	0.00	
1,500.0	7.36	252.83	1,491.7	-39.8	-128.8	134.8	0.00	0.00	
1,600.0	7.36	252.83	1,590.9	-43.6	-141.0	147.6	0.00	0.00	
1,700.0	7.36	252.83	1,690.0	-47.3	-153.2	160.4	0.00	0.00	
1,800.0	7.36	252.83	1,789.2	-51.1	-165.5	173.2	0.00	0.00	
1,900.0	7.36	252.83	1,888.4	-54.9	-177.7	186.0	0.00	0.00	
2,000.0	7.36	252.83	1,987.6	-58.7	-189.9	198.8	0.00	0.00	
2,100.0	7.36	252.83	2,086.7	-62.5	-202.2	211.6	0.00	0.00	
2,200.0	7.36	252.83	2,185.9	-66.2	-214.4	224.4	0.00	0.00	
2,300.0	7.36	252.83	2,285.1	-70.0	-226.6	237.2	0.00	0.00	
2,400.0	7.36	252.83	2,384.3	-73.8	-238.8	250.0	0.00	0.00	
2,500.0	7.36	252.83	2,483.4	-77.6	-251.1	262.8	0.00	0.00	
2,600.0	7.36	252.83	2,582.6	-81.3	-263.3	275.6	0.00	0.00	
2,700.0	7.36	252.83	2,681.8	-85.1	-275.5	288.4	0.00	0.00	
2,800.0	7.36	252.83	2,781.0	-88.9	-287.8	301.2	0.00	0.00	
2,900.0	7.36	252.83	2,880.2	-92.7	-300.0	314.0	0.00	0.00	
3,000.0	7.36	252.83	2,979.3	-96.5	-312.2	326.8	0.00	0.00	
3,100.0	7.36	252.83	3,078.5	-100.2	-324.5	339.6	0.00	0.00	
3,200.0	7.36	252.83	3,177.7	-104.0	-336.7	352.4	0.00	0.00	
3,300.0	7.36	252.83	3,276.9	-107.8	-348.9	365.2	0.00	0.00	
3,400.0	7.36	252.83	3,376.0	-111.6	-361.2	378.0	0.00	0.00	
3,500.0	7.36	252.83	3,475.2	-115.4	-373.4	390.8	0.00	0.00	
3,600.0	7.36	252.83	3,574.4	-119.1	-385.6	403.6	0.00	0.00	
3,700.0	7.36	252.83	3,673.6	-122.9	-397.9	416.4	0.00	0.00	
3,800.0	7.36	252.83	3,772.7	-126.7	-410.1	429.2	0.00	0.00	
3,900.0	7.36	252.83	3,871.9	-130.5	-422.3	442.0	0.00	0.00	
4,000.0	7.36	252.83	3,971.1	-134.3	-434.6	454.8	0.00	0.00	
4,100.0	7.36	252.83	4,070.3	-138.0	-446.8	467.6	0.00	0.00	
4,200.0	7.36	252.83	4,169.5	-141.8	-459.0	480.4	0.00	0.00	
4,300.0	7.36	252.83	4,268.6	-145.6	-471.3	493.2	0.00	0.00	
4,400.0	7.36	252.83	4,367.8	-149.4	-483.5	506.0	0.00	0.00	
4,500.0	7.36	252.83	4,467.0	-153.1	-495.7	518.8	0.00	0.00	
4,600.0	7.36	252.83	4,566.2	-156.9	-508.0	531.7	0.00	0.00	
4,700.0	7.36	252.83	4,665.3	-160.7	-520.2	544.5	0.00	0.00	
4,800.0	7.36	252.83	4,764.5	-164.5	-532.4	557.3	0.00	0.00	
4,900.0	7.36	252.83	4,863.7	-168.3	-544.7	570.1	0.00	0.00	

Cathedral Energy Services

Planning Report

Database:	USA EDM 5000 Multi Users DB	Local Co-ordinate Reference:	Well PUCKETT 44B-2
Company:	Caerus Oil & Gas (NAD 27)	TVD Reference:	KB=22' @ 8446.0usft
Project:	Garfield County, CO	MD Reference:	KB=22' @ 8446.0usft
Site:	S2-T7S-R97W (Puckett Pad P2)	North Reference:	True
Well:	PUCKETT 44B-2	Survey Calculation Method:	Minimum Curvature
Wellbore:	DD		
Design:	Plan #1		

Planned Survey									
Measured Depth (usft)	Inclination (°)	Azimuth (°)	Vertical Depth (usft)	+N/-S (usft)	+E/-W (usft)	Vertical Section (usft)	Dogleg Rate (°/100usft)	Build Rate (°/100u)	Comments / Formations
5,000.0	7.36	252.83	4,962.9	-172.0	-556.9	582.9	0.00	0.00	
5,100.0	7.36	252.83	5,062.0	-175.8	-569.1	595.7	0.00	0.00	
5,200.0	7.36	252.83	5,161.2	-179.6	-581.4	608.5	0.00	0.00	
5,300.0	7.36	252.83	5,260.4	-183.4	-593.6	621.3	0.00	0.00	
5,400.0	7.36	252.83	5,359.6	-187.2	-605.8	634.1	0.00	0.00	
5,500.0	7.36	252.83	5,458.8	-190.9	-618.1	646.9	0.00	0.00	
5,600.0	7.36	252.83	5,557.9	-194.7	-630.3	659.7	0.00	0.00	
5,700.0	7.36	252.83	5,657.1	-198.5	-642.5	672.5	0.00	0.00	
5,800.0	7.36	252.83	5,756.3	-202.3	-654.8	685.3	0.00	0.00	
5,845.1	7.36	252.83	5,801.0	-204.0	-660.3	691.1	0.00	0.00	OHIO CREEK
5,900.0	7.36	252.83	5,855.5	-206.1	-667.0	698.1	0.00	0.00	
6,000.0	7.36	252.83	5,954.6	-209.8	-679.2	710.9	0.00	0.00	
6,100.0	7.36	252.83	6,053.8	-213.6	-691.5	723.7	0.00	0.00	
6,200.0	7.36	252.83	6,153.0	-217.4	-703.7	736.5	0.00	0.00	
6,300.0	7.36	252.83	6,252.2	-221.2	-715.9	749.3	0.00	0.00	
6,379.5	7.36	252.83	6,331.0	-224.2	-725.6	759.5	0.00	0.00	WILLIAMS FORK
6,400.0	7.36	252.83	6,351.3	-225.0	-728.1	762.1	0.00	0.00	
6,500.0	7.36	252.83	6,450.5	-228.7	-740.4	774.9	0.00	0.00	
6,600.0	7.36	252.83	6,549.7	-232.5	-752.6	787.7	0.00	0.00	
6,700.0	7.36	252.83	6,648.9	-236.3	-764.8	800.5	0.00	0.00	
6,800.0	7.36	252.83	6,748.1	-240.1	-777.1	813.3	0.00	0.00	
6,900.0	7.36	252.83	6,847.2	-243.8	-789.3	826.1	0.00	0.00	
7,000.0	7.36	252.83	6,946.4	-247.6	-801.5	838.9	0.00	0.00	
7,070.7	7.36	252.83	7,016.5	-250.3	-810.2	848.0	0.00	0.00	Start 3° Drop
7,100.0	6.48	252.83	7,045.6	-251.3	-813.6	851.5	3.00	-3.00	
7,200.0	3.48	252.83	7,145.2	-253.9	-821.8	860.2	3.00	-3.00	
7,300.0	0.48	252.83	7,245.2	-254.9	-825.1	863.6	3.00	-3.00	
7,315.8	0.00	0.00	7,261.0	-254.9	-825.2	863.7	3.00	-3.00	EOD @ 0° INC - TOG
7,400.0	0.00	0.00	7,345.2	-254.9	-825.2	863.7	0.00	0.00	
7,500.0	0.00	0.00	7,445.2	-254.9	-825.2	863.7	0.00	0.00	
7,600.0	0.00	0.00	7,545.2	-254.9	-825.2	863.7	0.00	0.00	
7,700.0	0.00	0.00	7,645.2	-254.9	-825.2	863.7	0.00	0.00	
7,800.0	0.00	0.00	7,745.2	-254.9	-825.2	863.7	0.00	0.00	
7,900.0	0.00	0.00	7,845.2	-254.9	-825.2	863.7	0.00	0.00	
8,000.0	0.00	0.00	7,945.2	-254.9	-825.2	863.7	0.00	0.00	
8,100.0	0.00	0.00	8,045.2	-254.9	-825.2	863.7	0.00	0.00	
8,200.0	0.00	0.00	8,145.2	-254.9	-825.2	863.7	0.00	0.00	
8,250.8	0.00	0.00	8,196.0	-254.9	-825.2	863.7	0.00	0.00	CAMEO
8,300.0	0.00	0.00	8,245.2	-254.9	-825.2	863.7	0.00	0.00	
8,400.0	0.00	0.00	8,345.2	-254.9	-825.2	863.7	0.00	0.00	
8,500.0	0.00	0.00	8,445.2	-254.9	-825.2	863.7	0.00	0.00	
8,600.0	0.00	0.00	8,545.2	-254.9	-825.2	863.7	0.00	0.00	
8,665.8	0.00	0.00	8,611.0	-254.9	-825.2	863.7	0.00	0.00	ROLLINS
8,700.0	0.00	0.00	8,645.2	-254.9	-825.2	863.7	0.00	0.00	
8,800.0	0.00	0.00	8,745.2	-254.9	-825.2	863.7	0.00	0.00	
8,815.8	0.00	0.00	8,761.0	-254.9	-825.2	863.7	0.00	0.00	TD @ 8,815.8' MD

Cathedral Energy Services

Planning Report

Database:	USA EDM 5000 Multi Users DB	Local Co-ordinate Reference:	Well PUCKETT 44B-2
Company:	Caerus Oil & Gas (NAD 27)	TVD Reference:	KB=22' @ 8446.0usft
Project:	Garfield County, CO	MD Reference:	KB=22' @ 8446.0usft
Site:	S2-T7S-R97W (Puckett Pad P2)	North Reference:	True
Well:	PUCKETT 44B-2	Survey Calculation Method:	Minimum Curvature
Wellbore:	DD		
Design:	Plan #1		

Targets									
Target Name	Dip Angle	Dip Dir.	TVD	+N/-S	+E/-W	Northing	Easting	Latitude	Longitude
- hit/miss target	(°)	(°)	(usft)	(usft)	(usft)	(usft)	(usft)		
- Shape									
PUCKETT 44B-2 BHL	0.00	0.00	8,761.0	-254.9	-825.2	607,092.75	1,243,109.40	39.469608	-108.181417
- plan hits target center									
- Circle (radius 50.0)									
PUCKETT 44B-2 TGT	0.00	0.00	7,261.0	-254.9	-825.2	607,092.75	1,243,109.40	39.469608	-108.181417
- plan hits target center									
- Point									

Formations						
Measured Depth	Vertical Depth	Name	Lithology	Dip	Dip Direction	
(usft)	(usft)			(°)	(°)	
5,845.1	5,801.0	OHIO CREEK				
6,379.5	6,331.0	WILLIAMS FORK				
7,315.8	7,261.0	TOG				
8,250.8	8,196.0	CAMEO				
8,665.8	8,611.0	ROLLINS				

Plan Annotations					
Measured Depth	Vertical Depth	Local Coordinates			
(usft)	(usft)	+N/-S	+E/-W	Comment	
(usft)	(usft)	(usft)	(usft)		
325.0	325.0	0.0	0.0	KOP @ 325'	
570.2	569.5	-4.6	-15.0	EOB @ 7.36° INC	
7,070.7	7,016.5	-250.3	-810.2	Start 3° Drop	
7,315.8	7,261.0	-254.9	-825.2	EOD @ 0° INC	
8,815.8	8,761.0	-254.9	-825.2	TD @ 8,815.8' MD	

Caerus Oil & Gas (NAD 27)

Garfield County, CO

S2-T7S-R97W (Puckett Pad P2)

PUCKETT 44B-2

DD

Plan #1

Anticollision Report

01 October, 2014

Cathedral Energy Services

Anticollision Report

Company:	Caerus Oil & Gas (NAD 27)	Local Co-ordinate Reference:	Well PUCKETT 44B-2
Project:	Garfield County, CO	TVD Reference:	KB=22' @ 8446.0usft
Reference Site:	S2-T7S-R97W (Puckett Pad P2)	MD Reference:	KB=22' @ 8446.0usft
Site Error:	0.0usft	North Reference:	True
Reference Well:	PUCKETT 44B-2	Survey Calculation Method:	Minimum Curvature
Well Error:	0.0usft	Output errors are at	2.00 sigma
Reference Wellbore	DD	Database:	USA EDM 5000 Multi Users DB
Reference Design:	Plan #1	Offset TVD Reference:	Offset Datum

Reference	Plan #1		
Filter type:	NO GLOBAL FILTER: Using user defined selection & filtering criteria		
Interpolation Method:	MD Interval 100.0usft	Error Model:	ISCWSA
Depth Range:	Unlimited	Scan Method:	Closest Approach 3D
Results Limited by:	Maximum center-center distance of 200.0usft	Error Surface:	Elliptical Conic
Warning Levels Evaluated at:	2.00 Sigma		

Survey Tool Program		Date	10/1/2014		
From (usft)	To (usft)	Survey (Wellbore)	Tool Name	Description	
0.0	8,815.8	Plan #1 (DD)	ISCWSA MWD	MWD - Standard	

Summary						
Site Name	Reference Measured Depth (usft)	Offset Measured Depth (usft)	Distance Between Centres (usft)	Distance Between Ellipses (usft)	Separation Factor	Warning
S2-T7S-R97W (Puckett Pad P2)						
PUCKETT 11A-12 - DD - Plan #1	233.5	233.5	25.4	24.6	32.687	CC, ES
PUCKETT 11A-12 - DD - Plan #1	500.0	495.5	39.1	37.1	20.134	SF
PUCKETT 11B-12 - DD - Plan #1	200.0	200.0	33.2	32.6	53.101	CC, ES
PUCKETT 11B-12 - DD - Plan #1	500.0	493.0	52.6	50.6	26.790	SF
PUCKETT 13D-1 - DD - Plan #1	200.0	200.0	31.8	31.2	50.964	CC, ES
PUCKETT 13D-1 - DD - Plan #1	400.0	396.6	40.8	39.2	26.042	SF
PUCKETT 14A-1 - DD - Plan #1	300.0	300.0	33.3	32.3	31.022	CC, ES
PUCKETT 14A-1 - DD - Plan #1	500.0	498.9	41.3	39.2	19.911	SF
PUCKETT 14B-1 - DD - Plan #1	300.0	300.0	19.5	18.4	18.133	CC, ES
PUCKETT 14B-1 - DD - Plan #1	400.0	400.0	20.9	19.4	13.517	SF
PUCKETT 14C-1 - DD - Plan #1	300.0	300.0	9.9	8.8	9.199	CC
PUCKETT 14C-1 - DD - Plan #1	308.4	308.4	9.9	8.8	8.893	ES
PUCKETT 14C-1 - DD - Plan #1	400.0	399.7	11.6	10.0	7.575	SF
PUCKETT 14D-1 - DD - Plan #1	300.0	300.0	18.9	17.9	17.632	CC, ES
PUCKETT 14D-1 - DD - Plan #1	400.0	399.2	20.4	18.9	13.663	SF
PUCKETT 24A-1 - DD - Plan #1	300.0	300.0	26.8	25.7	24.922	CC, ES
PUCKETT 24A-1 - DD - Plan #1	400.0	398.8	30.1	28.6	19.543	SF
PUCKETT 24C-1 - DD - Plan #1	233.6	233.6	12.6	11.8	16.256	CC, ES
PUCKETT 24C-1 - DD - Plan #1	300.0	299.7	13.2	12.1	12.393	SF
PUCKETT 24D-1 - DD - Plan #1	200.0	200.0	12.8	12.2	20.543	CC, ES
PUCKETT 24D-1 - DD - Plan #1	300.0	299.5	14.7	13.6	13.815	SF
PUCKETT 43C-2 - DD - Plan #1	255.8	255.8	24.8	23.9	28.342	CC
PUCKETT 43C-2 - DD - Plan #1	300.0	299.9	24.8	23.8	23.150	ES
PUCKETT 43C-2 - DD - Plan #1	500.0	498.7	33.8	31.8	16.626	SF
PUCKETT 43D-2 - DD - Plan #1	300.0	300.0	16.5	15.5	15.397	CC, ES
PUCKETT 43D-2 - DD - Plan #1	500.0	500.0	21.8	19.8	10.823	SF
PUCKETT 44A-2 - DD - Plan #1	300.0	300.0	8.6	7.5	7.978	CC, ES
PUCKETT 44A-2 - DD - Plan #1	400.0	400.0	9.6	8.1	6.289	SF
PUCKETT 44C-2 - DD - Plan #1	255.6	255.6	8.0	7.1	9.111	CC
PUCKETT 44C-2 - DD - Plan #1	300.0	299.9	8.1	7.0	7.595	ES
PUCKETT 44C-2 - DD - Plan #1	400.0	399.4	10.6	9.1	7.058	SF
PUCKETT 44D-2 - DD - Plan #1	200.0	200.0	15.3	14.7	24.497	CC, ES
PUCKETT 44D-2 - DD - Plan #1	500.0	496.7	28.6	26.6	14.313	SF

CC - Min centre to center distance or convergent point, SF - min separation factor, ES - min ellipse separation

Cathedral Energy Services

Anticollision Report

Company:	Caerus Oil & Gas (NAD 27)	Local Co-ordinate Reference:	Well PUCKETT 44B-2
Project:	Garfield County, CO	TVD Reference:	KB=22' @ 8446.0usft
Reference Site:	S2-T7S-R97W (Puckett Pad P2)	MD Reference:	KB=22' @ 8446.0usft
Site Error:	0.0usft	North Reference:	True
Reference Well:	PUCKETT 44B-2	Survey Calculation Method:	Minimum Curvature
Well Error:	0.0usft	Output errors are at	2.00 sigma
Reference Wellbore	DD	Database:	USA EDM 5000 Multi Users DB
Reference Design:	Plan #1	Offset TVD Reference:	Offset Datum

Offset Design S2-T7S-R97W (Puckett Pad P2) - PUCKETT 11A-12 - DD - Plan #1													Offset Site Error:	0.0 usft
Survey Program: 0-ISCWSA MWD													Offset Well Error:	0.0 usft
Reference		Offset		Semi Major Axis			Distance						Warning	
Measured Depth (usft)	Vertical Depth (usft)	Measured Depth (usft)	Vertical Depth (usft)	Reference (usft)	Offset (usft)	Highside Toolface (°)	Offset Wellbore Centre +N/-S (usft)	+E/-W (usft)	Between Centres (usft)	Between Ellipses (usft)	Total Uncertainty Axis	Separation Factor		
0.0	0.0	0.0	0.0	0.0	0.0	-172.32	-25.1	-3.4	25.4					
100.0	100.0	100.0	100.0	0.1	0.1	-172.32	-25.1	-3.4	25.4	25.2	0.18	144.621		
200.0	200.0	200.0	200.0	0.3	0.3	-172.32	-25.1	-3.4	25.4	24.7	0.62	40.577		
233.5	233.5	233.5	233.5	0.4	0.4	-172.32	-25.1	-3.4	25.4	24.6	0.78	32.687	CC, ES	
300.0	300.0	299.4	299.4	0.5	0.5	-173.01	-25.7	-3.2	25.9	24.9	1.06	24.431		
400.0	400.0	398.0	397.8	0.8	0.7	-72.95	-30.5	-1.3	30.1	28.6	1.48	20.304		
500.0	499.8	495.5	494.8	1.0	1.0	-87.26	-39.8	2.4	39.1	37.1	1.94	20.134	SF	
600.0	599.1	591.1	589.3	1.2	1.3	-100.55	-53.4	7.8	55.3	52.9	2.49	22.262		
700.0	698.3	685.9	682.1	1.5	1.6	-107.87	-71.0	14.8	78.3	75.2	3.08	25.397		
800.0	797.4	782.6	776.6	1.8	2.0	-111.74	-90.1	22.4	103.1	99.4	3.66	28.148		
900.0	896.6	879.2	871.1	2.1	2.5	-114.11	-109.3	30.0	128.2	124.0	4.26	30.118		
1,000.0	995.8	975.9	965.5	2.4	2.9	-115.70	-128.4	37.6	153.4	148.6	4.86	31.543		
1,100.0	1,095.0	1,072.6	1,060.0	2.8	3.3	-116.84	-147.5	45.2	178.8	173.3	5.48	32.610		

Cathedral Energy Services

Anticollision Report

Company:	Caerus Oil & Gas (NAD 27)	Local Co-ordinate Reference:	Well PUCKETT 44B-2
Project:	Garfield County, CO	TVD Reference:	KB=22' @ 8446.0usft
Reference Site:	S2-T7S-R97W (Puckett Pad P2)	MD Reference:	KB=22' @ 8446.0usft
Site Error:	0.0usft	North Reference:	True
Reference Well:	PUCKETT 44B-2	Survey Calculation Method:	Minimum Curvature
Well Error:	0.0usft	Output errors are at	2.00 sigma
Reference Wellbore	DD	Database:	USA EDM 5000 Multi Users DB
Reference Design:	Plan #1	Offset TVD Reference:	Offset Datum

Offset Design S2-T7S-R97W (Puckett Pad P2) - PUCKETT 11B-12 - DD - Plan #1													Offset Site Error:	0.0 usft
Survey Program: 0-ISCSWA MWD													Offset Well Error:	0.0 usft
Reference		Offset		Semi Major Axis			Distance					Warning		
Measured Depth (usft)	Vertical Depth (usft)	Measured Depth (usft)	Vertical Depth (usft)	Reference (usft)	Offset (usft)	Highside Toolface (°)	Offset Wellbore Centre +N/-S (usft)	+E/-W (usft)	Between Centres (usft)	Between Ellipses (usft)	Total Uncertainty Axis	Separation Factor		
0.0	0.0	0.0	0.0	0.0	0.0	-167.72	-32.4	-7.1	33.2					
100.0	100.0	100.0	100.0	0.1	0.1	-167.72	-32.4	-7.1	33.2	33.0	0.18	189.259		
200.0	200.0	200.0	200.0	0.3	0.3	-167.72	-32.4	-7.1	33.2	32.6	0.62	53.101 CC, ES		
300.0	300.0	298.4	298.4	0.5	0.5	-169.73	-34.8	-6.3	35.4	34.4	1.05	33.709		
400.0	400.0	396.3	396.0	0.8	0.7	-68.95	-42.1	-4.1	41.9	40.4	1.50	27.986		
500.0	499.8	493.0	491.8	1.0	1.0	-80.04	-53.9	-0.5	52.6	50.6	1.96	26.790 SF		
600.0	599.1	587.7	585.1	1.2	1.3	-91.15	-69.9	4.5	69.6	67.1	2.50	27.838		
700.0	698.3	680.4	675.4	1.5	1.7	-98.25	-89.9	10.6	93.3	90.2	3.10	30.134		
800.0	797.4	774.2	765.9	1.8	2.2	-102.14	-113.5	17.9	121.5	117.8	3.72	32.677		
900.0	896.6	869.8	857.9	2.1	2.7	-104.58	-138.0	25.4	150.4	146.1	4.33	34.719		
1,000.0	995.8	965.4	950.0	2.4	3.2	-106.23	-162.4	33.0	179.5	174.6	4.96	36.169		

Cathedral Energy Services

Anticollision Report

Company:	Caerus Oil & Gas (NAD 27)	Local Co-ordinate Reference:	Well PUCKETT 44B-2
Project:	Garfield County, CO	TVD Reference:	KB=22' @ 8446.0usft
Reference Site:	S2-T7S-R97W (Puckett Pad P2)	MD Reference:	KB=22' @ 8446.0usft
Site Error:	0.0usft	North Reference:	True
Reference Well:	PUCKETT 44B-2	Survey Calculation Method:	Minimum Curvature
Well Error:	0.0usft	Output errors are at	2.00 sigma
Reference Wellbore	DD	Database:	USA EDM 5000 Multi Users DB
Reference Design:	Plan #1	Offset TVD Reference:	Offset Datum

Offset Design S2-T7S-R97W (Puckett Pad P2) - PUCKETT 13D-1 - DD - Plan #1												Offset Site Error:	0.0 usft
Survey Program: 0-ISCSWA MWD												Offset Well Error:	0.0 usft
Reference		Offset		Semi Major Axis			Distance						Warning
Measured Depth (usft)	Vertical Depth (usft)	Measured Depth (usft)	Vertical Depth (usft)	Reference (usft)	Offset (usft)	Highside Toolface (°)	Offset Wellbore Centre +N/-S (usft)	+E/-W (usft)	Between Centres (usft)	Between Ellipses (usft)	Total Uncertainty Axis	Separation Factor	
0.0	0.0	0.0	0.0	0.0	0.0	30.94	27.3	16.4	31.8				
100.0	100.0	100.0	100.0	0.1	0.1	30.94	27.3	16.4	31.8	31.7	0.18	181.640	
200.0	200.0	200.0	200.0	0.3	0.3	30.94	27.3	16.4	31.8	31.2	0.62	50.964 CC, ES	
300.0	300.0	298.7	298.7	0.5	0.5	31.33	28.4	17.3	33.3	32.2	1.07	31.103	
400.0	400.0	396.6	396.3	0.8	0.8	141.06	33.2	21.3	40.8	39.2	1.57	26.042 SF	
500.0	499.8	493.8	493.0	1.0	1.0	147.20	40.5	28.9	56.7	54.6	2.13	26.690	
600.0	599.1	589.0	587.3	1.2	1.3	155.28	46.4	40.8	80.0	77.3	2.67	29.916	
700.0	698.3	684.9	682.0	1.5	1.6	161.16	51.7	55.0	106.8	103.6	3.13	34.131	
800.0	797.4	780.9	776.7	1.8	1.9	164.67	57.0	69.2	134.1	130.5	3.57	37.528	
900.0	896.6	876.8	871.4	2.1	2.3	166.99	62.4	83.3	161.8	157.8	4.03	40.178	
1,000.0	995.8	972.7	966.1	2.4	2.6	168.64	67.7	97.5	189.6	185.2	4.49	42.267	

Cathedral Energy Services

Anticollision Report

Company:	Caerus Oil & Gas (NAD 27)	Local Co-ordinate Reference:	Well PUCKETT 44B-2
Project:	Garfield County, CO	TVD Reference:	KB=22' @ 8446.0usft
Reference Site:	S2-T7S-R97W (Puckett Pad P2)	MD Reference:	KB=22' @ 8446.0usft
Site Error:	0.0usft	North Reference:	True
Reference Well:	PUCKETT 44B-2	Survey Calculation Method:	Minimum Curvature
Well Error:	0.0usft	Output errors are at	2.00 sigma
Reference Wellbore	DD	Database:	USA EDM 5000 Multi Users DB
Reference Design:	Plan #1	Offset TVD Reference:	Offset Datum

Offset Design S2-T7S-R97W (Puckett Pad P2) - PUCKETT 14A-1 - DD - Plan #1													Offset Site Error:	0.0 usft
Survey Program: 0-ISWWSA MWD													Offset Well Error:	0.0 usft
Reference		Offset		Semi Major Axis			Distance							Warning
Measured Depth (usft)	Vertical Depth (usft)	Measured Depth (usft)	Vertical Depth (usft)	Reference (usft)	Offset (usft)	Highside Toolface (°)	Offset Wellbore Centre +N/-S (usft)	+E/-W (usft)	Between Centres (usft)	Between Ellipses (usft)	Total Uncertainty Axis	Separation Factor		
0.0	0.0	0.0	0.0	0.0	0.0	48.19	22.2	24.8	33.3					
100.0	100.0	100.0	100.0	0.1	0.1	48.19	22.2	24.8	33.3	33.2	0.18	190.107		
200.0	200.0	200.0	200.0	0.3	0.3	48.19	22.2	24.8	33.3	32.7	0.62	53.339		
300.0	300.0	300.0	300.0	0.5	0.5	48.19	22.2	24.8	33.3	32.3	1.07	31.022 CC, ES		
400.0	400.0	400.0	400.0	0.8	0.8	156.36	22.2	24.8	34.7	33.1	1.54	22.460		
500.0	499.8	498.9	498.9	1.0	1.0	160.41	22.3	25.5	41.3	39.2	2.07	19.911 SF		
600.0	599.1	595.3	595.2	1.2	1.2	166.82	22.7	30.4	56.8	54.2	2.61	21.779		
700.0	698.3	689.7	689.0	1.5	1.4	171.96	23.5	39.8	78.6	75.5	3.06	25.707		
800.0	797.4	783.6	782.0	1.8	1.7	175.61	24.6	53.4	104.9	101.3	3.52	29.758		
900.0	896.6	879.7	876.9	2.1	2.0	177.95	25.8	68.1	132.2	128.2	3.97	33.283		
1,000.0	995.8	975.8	971.9	2.4	2.3	179.49	27.0	82.8	159.6	155.2	4.43	36.070		
1,100.0	1,095.0	1,071.9	1,066.8	2.8	2.6	-179.43	28.2	97.5	187.2	182.3	4.89	38.288		

Cathedral Energy Services

Anticollision Report

Company:	Caerus Oil & Gas (NAD 27)	Local Co-ordinate Reference:	Well PUCKETT 44B-2
Project:	Garfield County, CO	TVD Reference:	KB=22' @ 8446.0usft
Reference Site:	S2-T7S-R97W (Puckett Pad P2)	MD Reference:	KB=22' @ 8446.0usft
Site Error:	0.0usft	North Reference:	True
Reference Well:	PUCKETT 44B-2	Survey Calculation Method:	Minimum Curvature
Well Error:	0.0usft	Output errors are at	2.00 sigma
Reference Wellbore	DD	Database:	USA EDM 5000 Multi Users DB
Reference Design:	Plan #1	Offset TVD Reference:	Offset Datum

Offset Design S2-T7S-R97W (Puckett Pad P2) - PUCKETT 14B-1 - DD - Plan #1													Offset Site Error:	0.0 usft
Survey Program: 0-ISWWSA MWD													Offset Well Error:	0.0 usft
Reference		Offset		Semi Major Axis			Distance						Warning	
Measured Depth (usft)	Vertical Depth (usft)	Measured Depth (usft)	Vertical Depth (usft)	Reference (usft)	Offset (usft)	Highside Toolface (°)	Offset Wellbore Centre +N/-S (usft)	+E/-W (usft)	Between Centres (usft)	Between Ellipses (usft)	Total Uncertainty Axis	Separation Factor		
0.0	0.0	0.0	0.0	0.0	0.0	62.12	9.1	17.2	19.5					
100.0	100.0	100.0	100.0	0.1	0.1	62.12	9.1	17.2	19.5	19.3	0.18	111.126		
200.0	200.0	200.0	200.0	0.3	0.3	62.12	9.1	17.2	19.5	18.9	0.62	31.179		
300.0	300.0	300.0	300.0	0.5	0.5	62.12	9.1	17.2	19.5	18.4	1.07	18.133 CC, ES		
400.0	400.0	400.0	400.0	0.8	0.8	170.03	9.1	17.2	20.9	19.4	1.55	13.517 SF		
500.0	499.8	498.5	498.5	1.0	1.0	175.12	8.7	19.7	29.6	27.5	2.09	14.158		
600.0	599.1	595.0	594.7	1.2	1.2	-179.02	7.5	27.0	47.8	45.2	2.63	18.145		
700.0	698.3	689.2	688.1	1.5	1.4	-174.96	5.6	38.8	72.0	69.0	3.08	23.368		
800.0	797.4	784.9	782.6	1.8	1.7	-172.31	3.2	53.7	99.3	95.8	3.54	28.025		
900.0	896.6	881.0	877.5	2.1	2.0	-170.78	0.8	68.6	126.7	122.7	4.00	31.668		
1,000.0	995.8	977.1	972.4	2.4	2.4	-169.79	-1.7	83.6	154.2	149.7	4.47	34.502		
1,100.0	1,095.0	1,073.2	1,067.3	2.8	2.7	-169.10	-4.1	98.6	181.7	176.8	4.95	36.736		

Cathedral Energy Services

Anticollision Report

Company:	Caerus Oil & Gas (NAD 27)	Local Co-ordinate Reference:	Well PUCKETT 44B-2
Project:	Garfield County, CO	TVD Reference:	KB=22' @ 8446.0usft
Reference Site:	S2-T7S-R97W (Puckett Pad P2)	MD Reference:	KB=22' @ 8446.0usft
Site Error:	0.0usft	North Reference:	True
Reference Well:	PUCKETT 44B-2	Survey Calculation Method:	Minimum Curvature
Well Error:	0.0usft	Output errors are at	2.00 sigma
Reference Wellbore	DD	Database:	USA EDM 5000 Multi Users DB
Reference Design:	Plan #1	Offset TVD Reference:	Offset Datum

Offset Design S2-T7S-R97W (Puckett Pad P2) - PUCKETT 14C-1 - DD - Plan #1													Offset Site Error:	0.0 usft
Survey Program: 0-ISCWSA MWD													Offset Well Error:	0.0 usft
Reference		Offset		Semi Major Axis			Distance						Warning	
Measured Depth (usft)	Vertical Depth (usft)	Measured Depth (usft)	Vertical Depth (usft)	Reference (usft)	Offset (usft)	Highside Toolface (°)	Offset Wellbore Centre +N/-S (usft)	+E/-W (usft)	Between Centres (usft)	Between Ellipses (usft)	Total Uncertainty Axis	Separation Factor		
0.0	0.0	0.0	0.0	0.0	0.0	121.03	-5.1	8.5	9.9					
100.0	100.0	100.0	100.0	0.1	0.1	121.03	-5.1	8.5	9.9	9.7	0.18	56.375		
200.0	200.0	200.0	200.0	0.3	0.3	121.03	-5.1	8.5	9.9	9.3	0.62	15.817		
300.0	300.0	300.0	300.0	0.5	0.5	121.03	-5.1	8.5	9.9	8.8	1.07	9.199 CC		
308.4	308.4	308.4	308.4	0.6	0.6	-131.86	-5.1	8.5	9.9	8.8	1.11	8.893 ES		
400.0	400.0	399.7	399.7	0.8	0.8	-137.70	-5.3	9.1	11.6	10.0	1.53	7.575 SF		
500.0	499.8	498.2	498.1	1.0	1.0	-149.72	-7.2	13.8	22.1	20.0	2.06	10.729		
600.0	599.1	594.5	593.9	1.2	1.2	-155.19	-10.9	23.0	42.3	39.7	2.62	16.129		
700.0	698.3	689.1	687.3	1.5	1.5	-156.46	-16.3	36.2	68.3	65.2	3.11	22.003		
800.0	797.4	785.2	782.1	1.8	1.8	-156.77	-22.3	51.1	95.9	92.3	3.57	26.848		
900.0	896.6	881.3	876.8	2.1	2.1	-156.94	-28.3	66.0	123.5	119.4	4.05	30.485		
1,000.0	995.8	977.4	971.6	2.4	2.5	-157.05	-34.3	80.9	151.0	146.5	4.54	33.258		
1,100.0	1,095.0	1,073.6	1,066.4	2.8	2.8	-157.12	-40.3	95.8	178.6	173.5	5.04	35.425		

Cathedral Energy Services

Anticollision Report

Company:	Caerus Oil & Gas (NAD 27)	Local Co-ordinate Reference:	Well PUCKETT 44B-2
Project:	Garfield County, CO	TVD Reference:	KB=22' @ 8446.0usft
Reference Site:	S2-T7S-R97W (Puckett Pad P2)	MD Reference:	KB=22' @ 8446.0usft
Site Error:	0.0usft	North Reference:	True
Reference Well:	PUCKETT 44B-2	Survey Calculation Method:	Minimum Curvature
Well Error:	0.0usft	Output errors are at	2.00 sigma
Reference Wellbore	DD	Database:	USA EDM 5000 Multi Users DB
Reference Design:	Plan #1	Offset TVD Reference:	Offset Datum

Offset Design S2-T7S-R97W (Puckett Pad P2) - PUCKETT 14D-1 - DD - Plan #1													Offset Site Error:	0.0 usft
Survey Program: 0-ISWWSA MWD													Offset Well Error:	0.0 usft
Reference		Offset		Semi Major Axis			Distance							Warning
Measured Depth (usft)	Vertical Depth (usft)	Measured Depth (usft)	Vertical Depth (usft)	Reference (usft)	Offset (usft)	Highside Toolface (°)	Offset Wellbore Centre +N/-S (usft)	+E/-W (usft)	Between Centres (usft)	Between Ellipses (usft)	Total Uncertainty Axis	Separation Factor		
0.0	0.0	0.0	0.0	0.0	0.0	178.29	-18.9	0.6	18.9					
100.0	100.0	100.0	100.0	0.1	0.1	178.29	-18.9	0.6	18.9	18.8	0.18	108.054		
200.0	200.0	200.0	200.0	0.3	0.3	178.29	-18.9	0.6	18.9	18.3	0.62	30.317		
300.0	300.0	300.0	300.0	0.5	0.5	178.29	-18.9	0.6	18.9	17.9	1.07	17.632 CC, ES		
400.0	400.0	399.2	399.2	0.8	0.7	-84.20	-20.5	2.6	20.4	18.9	1.50	13.663 SF		
500.0	499.8	497.3	497.0	1.0	1.0	-108.35	-24.9	8.8	28.1	26.1	1.96	14.295		
600.0	599.1	593.2	592.0	1.2	1.2	-126.45	-32.2	18.7	46.3	43.8	2.55	18.164		
700.0	698.3	687.0	684.4	1.5	1.5	-134.35	-41.9	32.1	72.2	69.1	3.10	23.300		
800.0	797.4	782.8	778.3	1.8	1.9	-137.96	-52.9	47.2	100.4	96.8	3.61	27.814		
900.0	896.6	878.6	872.3	2.1	2.3	-139.99	-63.9	62.2	128.9	124.8	4.13	31.235		
1,000.0	995.8	974.4	966.2	2.4	2.7	-141.28	-74.9	77.3	157.5	152.8	4.65	33.825		
1,100.0	1,095.0	1,070.1	1,060.2	2.8	3.1	-142.17	-85.9	92.4	186.1	180.9	5.19	35.833		

Cathedral Energy Services

Anticollision Report

Company:	Caerus Oil & Gas (NAD 27)	Local Co-ordinate Reference:	Well PUCKETT 44B-2
Project:	Garfield County, CO	TVD Reference:	KB=22' @ 8446.0usft
Reference Site:	S2-T7S-R97W (Puckett Pad P2)	MD Reference:	KB=22' @ 8446.0usft
Site Error:	0.0usft	North Reference:	True
Reference Well:	PUCKETT 44B-2	Survey Calculation Method:	Minimum Curvature
Well Error:	0.0usft	Output errors are at	2.00 sigma
Reference Wellbore	DD	Database:	USA EDM 5000 Multi Users DB
Reference Design:	Plan #1	Offset TVD Reference:	Offset Datum

Offset Design S2-T7S-R97W (Puckett Pad P2) - PUCKETT 24A-1 - DD - Plan #1													Offset Site Error:	0.0 usft
Survey Program: 0-ISCSWA MWD													Offset Well Error:	0.0 usft
Reference		Offset		Semi Major Axis			Distance						Warning	
Measured Depth (usft)	Vertical Depth (usft)	Measured Depth (usft)	Vertical Depth (usft)	Reference (usft)	Offset (usft)	Highside Toolface (°)	Offset Wellbore Centre +N/-S (usft)	+E/-W (usft)	Between Centres (usft)	Between Ellipses (usft)	Total Uncertainty Axis	Separation Factor		
0.0	0.0	0.0	0.0	0.0	0.0	52.26	16.4	21.2	26.8					
100.0	100.0	100.0	100.0	0.1	0.1	52.26	16.4	21.2	26.8	26.6	0.18	152.728		
200.0	200.0	200.0	200.0	0.3	0.3	52.26	16.4	21.2	26.8	26.2	0.62	42.852		
300.0	300.0	300.0	300.0	0.5	0.5	52.26	16.4	21.2	26.8	25.7	1.07	24.922 CC, ES		
400.0	400.0	398.8	398.8	0.8	0.7	163.67	16.2	23.7	30.1	28.6	1.54	19.543 SF		
500.0	499.8	496.3	495.9	1.0	1.0	172.37	15.5	31.2	43.0	40.8	2.11	20.319		
600.0	599.1	590.9	589.7	1.2	1.2	178.75	14.8	43.2	65.9	63.2	2.69	24.497		
700.0	698.3	682.6	680.1	1.5	1.5	-177.63	14.4	59.2	95.0	91.9	3.15	30.139		
800.0	797.4	771.5	766.8	1.8	1.9	-175.41	14.3	78.9	128.8	125.2	3.63	35.471		
900.0	896.6	857.3	849.5	2.1	2.3	-173.93	14.5	101.7	167.0	162.8	4.12	40.528		

Cathedral Energy Services

Anticollision Report

Company:	Caerus Oil & Gas (NAD 27)	Local Co-ordinate Reference:	Well PUCKETT 44B-2
Project:	Garfield County, CO	TVD Reference:	KB=22' @ 8446.0usft
Reference Site:	S2-T7S-R97W (Puckett Pad P2)	MD Reference:	KB=22' @ 8446.0usft
Site Error:	0.0usft	North Reference:	True
Reference Well:	PUCKETT 44B-2	Survey Calculation Method:	Minimum Curvature
Well Error:	0.0usft	Output errors are at	2.00 sigma
Reference Wellbore	DD	Database:	USA EDM 5000 Multi Users DB
Reference Design:	Plan #1	Offset TVD Reference:	Offset Datum

Offset Design S2-T7S-R97W (Puckett Pad P2) - PUCKETT 24C-1 - DD - Plan #1												Offset Site Error: 0.0 usft	
Survey Program: 0-ISCSWA MWD												Offset Well Error: 0.0 usft	
Reference		Offset		Semi Major Axis			Distance						Warning
Measured Depth (usft)	Vertical Depth (usft)	Measured Depth (usft)	Vertical Depth (usft)	Reference (usft)	Offset (usft)	Highside Toolface (°)	Offset Wellbore Centre +N/-S (usft)	+E/-W (usft)	Between Centres (usft)	Between Ellipses (usft)	Total Uncertainty Axis	Separation Factor	
0.0	0.0	0.0	0.0	0.0	0.0	80.00	2.2	12.4	12.6				
100.0	100.0	100.0	100.0	0.1	0.1	80.00	2.2	12.4	12.6	12.4	0.18	71.945	
200.0	200.0	200.0	200.0	0.3	0.3	80.00	2.2	12.4	12.6	12.0	0.62	20.186	
233.6	233.6	233.6	233.6	0.4	0.4	80.00	2.2	12.4	12.6	11.8	0.78	16.256 CC, ES	
300.0	300.0	299.7	299.7	0.5	0.5	81.14	2.0	13.0	13.2	12.1	1.07	12.393 SF	
400.0	400.0	398.7	398.5	0.8	0.7	-166.43	0.8	18.0	19.5	18.0	1.55	12.606	
500.0	499.8	496.0	495.3	1.0	1.0	-163.82	-1.6	27.8	35.7	33.6	2.13	16.746	
600.0	599.1	590.3	588.5	1.2	1.3	-163.00	-5.1	41.8	61.4	58.7	2.71	22.648	
700.0	698.3	681.7	678.1	1.5	1.6	-162.26	-9.4	59.6	92.7	89.5	3.19	29.076	
800.0	797.4	770.2	763.7	1.8	2.1	-161.43	-14.7	80.8	128.4	124.7	3.69	34.815	
900.0	896.6	855.4	845.3	2.1	2.5	-160.65	-20.6	104.8	168.2	164.0	4.20	40.047	

Cathedral Energy Services

Anticollision Report

Company:	Caerus Oil & Gas (NAD 27)	Local Co-ordinate Reference:	Well PUCKETT 44B-2
Project:	Garfield County, CO	TVD Reference:	KB=22' @ 8446.0usft
Reference Site:	S2-T7S-R97W (Puckett Pad P2)	MD Reference:	KB=22' @ 8446.0usft
Site Error:	0.0usft	North Reference:	True
Reference Well:	PUCKETT 44B-2	Survey Calculation Method:	Minimum Curvature
Well Error:	0.0usft	Output errors are at	2.00 sigma
Reference Wellbore	DD	Database:	USA EDM 5000 Multi Users DB
Reference Design:	Plan #1	Offset TVD Reference:	Offset Datum

Offset Design													S2-T7S-R97W (Puckett Pad P2) - PUCKETT 24D-1 - DD - Plan #1		Offset Site Error:		0.0 usft
Survey Program: 0-ISWWSA MWD													Offset Well Error:		0.0 usft		
Reference		Offset		Semi Major Axis			Distance							Warning			
Measured Depth (usft)	Vertical Depth (usft)	Measured Depth (usft)	Vertical Depth (usft)	Reference (usft)	Offset (usft)	Highside Toolface (°)	Offset Wellbore Centre +N/-S (usft)	+E/-W (usft)	Between Centres (usft)	Between Ellipses (usft)	Total Uncertainty Axis	Separation Factor					
0.0	0.0	0.0	0.0	0.0	0.0	159.40	-12.0	4.5	12.8								
100.0	100.0	100.0	100.0	0.1	0.1	159.40	-12.0	4.5	12.8	12.7	0.18	73.216					
200.0	200.0	200.0	200.0	0.3	0.3	159.40	-12.0	4.5	12.8	12.2	0.62	20.543	CC, ES				
300.0	300.0	299.5	299.4	0.5	0.5	151.78	-12.9	6.9	14.7	13.6	1.06	13.815	SF				
400.0	400.0	398.3	397.9	0.8	0.8	-118.24	-15.6	14.1	21.8	20.3	1.53	14.245					
500.0	499.8	495.1	493.9	1.0	1.0	-134.27	-20.0	25.8	38.3	36.2	2.09	18.278					
600.0	599.1	588.7	586.0	1.2	1.4	-143.13	-25.9	41.4	64.7	62.0	2.69	24.046					
700.0	698.3	679.2	674.2	1.5	1.8	-147.12	-33.1	60.5	97.4	94.2	3.21	30.376					
800.0	797.4	766.7	758.4	1.8	2.2	-148.84	-41.5	82.6	134.6	130.9	3.73	36.109					
900.0	896.6	850.9	838.4	2.1	2.7	-149.61	-50.8	107.3	176.0	171.8	4.26	41.335					

Cathedral Energy Services

Anticollision Report

Company:	Caerus Oil & Gas (NAD 27)	Local Co-ordinate Reference:	Well PUCKETT 44B-2
Project:	Garfield County, CO	TVD Reference:	KB=22' @ 8446.0usft
Reference Site:	S2-T7S-R97W (Puckett Pad P2)	MD Reference:	KB=22' @ 8446.0usft
Site Error:	0.0usft	North Reference:	True
Reference Well:	PUCKETT 44B-2	Survey Calculation Method:	Minimum Curvature
Well Error:	0.0usft	Output errors are at	2.00 sigma
Reference Wellbore	DD	Database:	USA EDM 5000 Multi Users DB
Reference Design:	Plan #1	Offset TVD Reference:	Offset Datum

Offset Design S2-T7S-R97W (Puckett Pad P2) - PUCKETT 43C-2 - DD - Plan #1													Offset Site Error: 0.0 usft	
Survey Program: 0-ISCSWA MWD													Offset Well Error: 0.0 usft	
Reference		Offset		Semi Major Axis			Distance							Warning
Measured Depth (usft)	Vertical Depth (usft)	Measured Depth (usft)	Vertical Depth (usft)	Reference (usft)	Offset (usft)	Highside Toolface (°)	Offset Wellbore Centre +N/-S (usft)	+E/-W (usft)	Between Centres (usft)	Between Ellipses (usft)	Total Uncertainty Axis	Separation Factor		
0.0	0.0	0.0	0.0	0.0	0.0	30.03	21.5	12.4	24.8					
100.0	100.0	100.0	100.0	0.1	0.1	30.03	21.5	12.4	24.8	24.6	0.18	141.579		
200.0	200.0	200.0	200.0	0.3	0.3	30.03	21.5	12.4	24.8	24.2	0.62	39.724		
255.8	255.8	255.8	255.8	0.4	0.4	30.03	21.5	12.4	24.8	23.9	0.88	28.342 CC		
300.0	300.0	299.9	299.9	0.5	0.5	29.66	21.6	12.3	24.8	23.8	1.07	23.150 ES		
400.0	400.0	399.6	399.5	0.8	0.8	130.70	24.1	9.3	26.8	25.2	1.53	17.511		
500.0	499.8	498.7	498.2	1.0	1.0	124.13	29.9	2.4	33.8	31.8	2.03	16.626 SF		
600.0	599.1	597.2	595.7	1.2	1.3	119.48	38.8	-8.4	45.9	43.3	2.60	17.684		
700.0	698.3	696.2	693.4	1.5	1.6	116.34	49.1	-20.7	59.7	56.5	3.17	18.818		
800.0	797.4	795.2	791.1	1.8	2.0	114.38	59.3	-33.0	73.6	69.9	3.78	19.472		
900.0	896.6	894.2	888.8	2.1	2.3	113.05	69.6	-45.2	87.6	83.2	4.41	19.879		
1,000.0	995.8	993.2	986.5	2.4	2.7	112.08	79.8	-57.5	101.6	96.6	5.04	20.149		
1,100.0	1,095.0	1,092.2	1,084.2	2.8	3.0	111.35	90.1	-69.8	115.7	110.0	5.69	20.340		
1,200.0	1,194.1	1,191.2	1,181.9	3.1	3.4	110.77	100.3	-82.1	129.7	123.4	6.33	20.480		
1,300.0	1,293.3	1,290.2	1,279.6	3.4	3.8	110.31	110.6	-94.4	143.8	136.8	6.99	20.586		
1,400.0	1,392.5	1,389.2	1,377.3	3.7	4.1	109.93	120.8	-106.7	157.9	150.2	7.64	20.670		
1,500.0	1,491.7	1,488.2	1,475.0	4.1	4.5	109.61	131.1	-119.0	172.0	163.7	8.29	20.738		
1,600.0	1,590.9	1,587.2	1,572.7	4.4	4.9	109.35	141.3	-131.3	186.0	177.1	8.95	20.794		

Cathedral Energy Services

Anticollision Report

Company:	Caerus Oil & Gas (NAD 27)	Local Co-ordinate Reference:	Well PUCKETT 44B-2
Project:	Garfield County, CO	TVD Reference:	KB=22' @ 8446.0usft
Reference Site:	S2-T7S-R97W (Puckett Pad P2)	MD Reference:	KB=22' @ 8446.0usft
Site Error:	0.0usft	North Reference:	True
Reference Well:	PUCKETT 44B-2	Survey Calculation Method:	Minimum Curvature
Well Error:	0.0usft	Output errors are at	2.00 sigma
Reference Wellbore	DD	Database:	USA EDM 5000 Multi Users DB
Reference Design:	Plan #1	Offset TVD Reference:	Offset Datum

Offset Design S2-T7S-R97W (Puckett Pad P2) - PUCKETT 43D-2 - DD - Plan #1													Offset Site Error: 0.0 usft	
Survey Program: 0-ISCSWA MWD													Offset Well Error: 0.0 usft	
Reference		Offset		Semi Major Axis			Distance							
Measured Depth (usft)	Vertical Depth (usft)	Measured Depth (usft)	Vertical Depth (usft)	Reference (usft)	Offset (usft)	Highside Toolface (°)	Offset Wellbore Centre +N/-S (usft)	+E/-W (usft)	Between Centres (usft)	Between Ellipses (usft)	Total Uncertainty Axis	Separation Factor	Warning	
0.0	0.0	0.0	0.0	0.0	0.0	30.80	14.2	8.5	16.5					
100.0	100.0	100.0	100.0	0.1	0.1	30.80	14.2	8.5	16.5	16.4	0.18	94.355		
200.0	200.0	200.0	200.0	0.3	0.3	30.80	14.2	8.5	16.5	15.9	0.62	26.474		
300.0	300.0	300.0	300.0	0.5	0.5	30.80	14.2	8.5	16.5	15.5	1.07	15.397	CC, ES	
400.0	400.0	400.1	400.0	0.8	0.8	136.37	14.8	7.1	17.5	16.0	1.53	11.446		
500.0	499.8	500.0	499.7	1.0	1.0	130.99	17.5	1.2	21.8	19.8	2.01	10.823	SF	
600.0	599.1	599.6	598.6	1.2	1.2	125.06	22.4	-9.4	29.7	27.1	2.54	11.662		
700.0	698.3	699.1	697.2	1.5	1.5	120.49	28.1	-21.7	38.7	35.6	3.10	12.503		
800.0	797.4	798.7	795.9	1.8	1.9	117.67	33.7	-34.1	47.9	44.2	3.69	12.990		
900.0	896.6	898.2	894.5	2.1	2.2	115.76	39.4	-46.4	57.2	52.9	4.30	13.295		
1,000.0	995.8	997.8	993.1	2.4	2.5	114.38	45.0	-58.7	66.6	61.6	4.93	13.500		
1,100.0	1,095.0	1,097.3	1,091.7	2.8	2.8	113.34	50.7	-71.1	75.9	70.4	5.57	13.645		
1,200.0	1,194.1	1,196.9	1,190.4	3.1	3.1	112.53	56.4	-83.4	85.3	79.1	6.20	13.752		
1,300.0	1,293.3	1,296.4	1,289.0	3.4	3.5	111.88	62.0	-95.7	94.7	87.9	6.85	13.834		
1,400.0	1,392.5	1,396.0	1,387.6	3.7	3.8	111.35	67.7	-108.1	104.1	96.6	7.49	13.899		
1,500.0	1,491.7	1,495.5	1,486.2	4.1	4.1	110.91	73.3	-120.4	113.6	105.4	8.14	13.951		
1,600.0	1,590.9	1,595.1	1,584.9	4.4	4.5	110.53	79.0	-132.7	123.0	114.2	8.79	13.995		
1,700.0	1,690.0	1,694.6	1,683.5	4.7	4.8	110.21	84.7	-145.1	132.4	123.0	9.44	14.031		
1,800.0	1,789.2	1,794.2	1,782.1	5.1	5.1	109.93	90.3	-157.4	141.8	131.8	10.09	14.062		
1,900.0	1,888.4	1,893.7	1,880.7	5.4	5.5	109.69	96.0	-169.7	151.3	140.5	10.74	14.089		
2,000.0	1,987.6	1,993.3	1,979.3	5.7	5.8	109.47	101.6	-182.1	160.7	149.3	11.39	14.113		
2,100.0	2,086.7	2,092.8	2,078.0	6.1	6.2	109.28	107.3	-194.4	170.1	158.1	12.04	14.133		
2,200.0	2,185.9	2,192.4	2,176.6	6.4	6.5	109.11	113.0	-206.7	179.6	166.9	12.69	14.152		
2,300.0	2,285.1	2,291.9	2,275.2	6.7	6.8	108.95	118.6	-219.1	189.0	175.7	13.34	14.169		
2,400.0	2,384.3	2,391.5	2,373.8	7.0	7.2	108.81	124.3	-231.4	198.5	184.5	13.99	14.184		

Cathedral Energy Services

Anticollision Report

Company:	Caerus Oil & Gas (NAD 27)	Local Co-ordinate Reference:	Well PUCKETT 44B-2
Project:	Garfield County, CO	TVD Reference:	KB=22' @ 8446.0usft
Reference Site:	S2-T7S-R97W (Puckett Pad P2)	MD Reference:	KB=22' @ 8446.0usft
Site Error:	0.0usft	North Reference:	True
Reference Well:	PUCKETT 44B-2	Survey Calculation Method:	Minimum Curvature
Well Error:	0.0usft	Output errors are at	2.00 sigma
Reference Wellbore	DD	Database:	USA EDM 5000 Multi Users DB
Reference Design:	Plan #1	Offset TVD Reference:	Offset Datum

Offset Design S2-T7S-R97W (Puckett Pad P2) - PUCKETT 44A-2 - DD - Plan #1														Offset Site Error:	0.0 usft
Survey Program: 0-ISCSWA MWD														Offset Well Error:	0.0 usft
Reference		Offset		Semi Major Axis		Distance									
Measured Depth (usft)	Vertical Depth (usft)	Measured Depth (usft)	Vertical Depth (usft)	Reference (usft)	Offset (usft)	Highside Toolface (°)	Offset Wellbore Centre +N/-S (usft)	+E/-W (usft)	Between Centres (usft)	Between Ellipses (usft)	Total Uncertainty Axis	Separation Factor	Warning		
0.0	0.0	0.0	0.0	0.0	0.0	31.80	7.3	4.5	8.6						
100.0	100.0	100.0	100.0	0.1	0.1	31.80	7.3	4.5	8.6	8.4	0.18	48.891			
200.0	200.0	200.0	200.0	0.3	0.3	31.80	7.3	4.5	8.6	7.9	0.62	13.717			
300.0	300.0	300.0	300.0	0.5	0.5	31.80	7.3	4.5	8.6	7.5	1.07	7.978 CC, ES			
400.0	400.0	400.0	400.0	0.8	0.8	143.84	7.3	4.4	9.6	8.1	1.53	6.289 SF			
500.0	499.8	500.3	500.2	1.0	1.0	146.18	7.6	0.4	12.8	10.8	2.02	6.342			
600.0	599.1	600.7	600.1	1.2	1.2	142.36	8.3	-8.8	17.2	14.7	2.52	6.830			
700.0	698.3	700.6	699.3	1.5	1.5	134.70	9.3	-21.1	21.2	18.2	3.01	7.042			
800.0	797.4	800.5	798.4	1.8	1.8	129.43	10.2	-33.5	25.4	21.9	3.57	7.136			
900.0	896.6	900.4	897.5	2.1	2.1	125.69	11.2	-45.9	29.8	25.7	4.15	7.181			
1,000.0	995.8	1,000.3	996.6	2.4	2.4	122.91	12.1	-58.3	34.3	29.5	4.76	7.202			
1,100.0	1,095.0	1,100.1	1,095.8	2.8	2.7	120.78	13.1	-70.6	38.8	33.4	5.38	7.213			
1,200.0	1,194.1	1,200.0	1,194.9	3.1	3.0	119.10	14.0	-83.0	43.4	37.4	6.01	7.219			
1,300.0	1,293.3	1,299.9	1,294.0	3.4	3.3	117.73	15.0	-95.4	48.0	41.4	6.65	7.222			
1,400.0	1,392.5	1,399.8	1,393.1	3.7	3.6	116.61	15.9	-107.8	52.6	45.3	7.29	7.224			
1,500.0	1,491.7	1,499.7	1,492.2	4.1	4.0	115.67	16.9	-120.2	57.3	49.4	7.93	7.225			
1,600.0	1,590.9	1,599.6	1,591.3	4.4	4.3	114.87	17.8	-132.5	61.9	53.4	8.57	7.226			
1,700.0	1,690.0	1,699.5	1,690.4	4.7	4.6	114.18	18.8	-144.9	66.6	57.4	9.22	7.227			
1,800.0	1,789.2	1,799.4	1,789.5	5.1	4.9	113.58	19.7	-157.3	71.3	61.4	9.86	7.228			
1,900.0	1,888.4	1,899.3	1,888.7	5.4	5.2	113.06	20.7	-169.7	76.0	65.5	10.51	7.228			
2,000.0	1,987.6	1,999.1	1,987.8	5.7	5.6	112.60	21.6	-182.1	80.7	69.5	11.16	7.229			
2,100.0	2,086.7	2,099.0	2,086.9	6.1	5.9	112.18	22.6	-194.5	85.3	73.5	11.81	7.229			
2,200.0	2,185.9	2,198.9	2,186.0	6.4	6.2	111.81	23.5	-206.8	90.0	77.6	12.46	7.230			
2,300.0	2,285.1	2,298.8	2,285.1	6.7	6.5	111.48	24.5	-219.2	94.7	81.6	13.10	7.230			
2,400.0	2,384.3	2,398.7	2,384.2	7.0	6.8	111.18	25.4	-231.6	99.5	85.7	13.75	7.231			
2,500.0	2,483.4	2,498.6	2,483.3	7.4	7.2	110.91	26.4	-244.0	104.2	89.8	14.40	7.232			
2,600.0	2,582.6	2,598.5	2,582.4	7.7	7.5	110.66	27.3	-256.4	108.9	93.8	15.05	7.232			
2,700.0	2,681.8	2,698.4	2,681.6	8.0	7.8	110.43	28.3	-268.8	113.6	97.9	15.70	7.233			
2,800.0	2,781.0	2,798.2	2,780.7	8.4	8.1	110.21	29.2	-281.1	118.3	101.9	16.35	7.234			
2,900.0	2,880.2	2,898.1	2,879.8	8.7	8.5	110.02	30.2	-293.5	123.0	106.0	17.00	7.234			
3,000.0	2,979.3	2,998.0	2,978.9	9.0	8.8	109.84	31.1	-305.9	127.7	110.1	17.65	7.235			
3,100.0	3,078.5	3,097.9	3,078.0	9.4	9.1	109.67	32.1	-318.3	132.4	114.1	18.30	7.236			
3,200.0	3,177.7	3,197.8	3,177.1	9.7	9.4	109.51	33.0	-330.7	137.2	118.2	18.95	7.236			
3,300.0	3,276.9	3,297.7	3,276.2	10.0	9.8	109.37	34.0	-343.0	141.9	122.3	19.60	7.237			
3,400.0	3,376.0	3,397.6	3,375.4	10.4	10.1	109.23	34.9	-355.4	146.6	126.3	20.25	7.238			
3,500.0	3,475.2	3,497.5	3,474.5	10.7	10.4	109.10	35.9	-367.8	151.3	130.4	20.90	7.239			
3,600.0	3,574.4	3,597.3	3,573.6	11.0	10.7	108.98	36.8	-380.2	156.0	134.5	21.55	7.239			
3,700.0	3,673.6	3,697.2	3,672.7	11.4	11.1	108.87	37.8	-392.6	160.8	138.6	22.20	7.240			
3,800.0	3,772.7	3,797.1	3,771.8	11.7	11.4	108.76	38.7	-405.0	165.5	142.6	22.85	7.241			
3,900.0	3,871.9	3,897.0	3,870.9	12.0	11.7	108.66	39.7	-417.3	170.2	146.7	23.50	7.242			
4,000.0	3,971.1	3,996.9	3,970.0	12.4	12.0	108.57	40.6	-429.7	174.9	150.8	24.15	7.242			
4,100.0	4,070.3	4,096.8	4,069.1	12.7	12.3	108.48	41.6	-442.1	179.6	154.8	24.80	7.243			
4,200.0	4,169.5	4,196.7	4,168.3	13.0	12.7	108.39	42.5	-454.5	184.4	158.9	25.45	7.244			
4,300.0	4,268.6	4,296.6	4,267.4	13.4	13.0	108.31	43.5	-466.9	189.1	163.0	26.10	7.245			
4,400.0	4,367.8	4,396.5	4,366.5	13.7	13.3	108.23	44.4	-479.3	193.8	167.1	26.75	7.245			
4,500.0	4,467.0	4,496.3	4,465.6	14.0	13.6	108.16	45.4	-491.6	198.5	171.1	27.40	7.246			

Cathedral Energy Services

Anticollision Report

Company:	Caerus Oil & Gas (NAD 27)	Local Co-ordinate Reference:	Well PUCKETT 44B-2
Project:	Garfield County, CO	TVD Reference:	KB=22' @ 8446.0usft
Reference Site:	S2-T7S-R97W (Puckett Pad P2)	MD Reference:	KB=22' @ 8446.0usft
Site Error:	0.0usft	North Reference:	True
Reference Well:	PUCKETT 44B-2	Survey Calculation Method:	Minimum Curvature
Well Error:	0.0usft	Output errors are at	2.00 sigma
Reference Wellbore	DD	Database:	USA EDM 5000 Multi Users DB
Reference Design:	Plan #1	Offset TVD Reference:	Offset Datum

Offset Design S2-T7S-R97W (Puckett Pad P2) - PUCKETT 44C-2 - DD - Plan #1													Offset Site Error:	0.0 usft
Survey Program: 0-ISCWSA MWD													Offset Well Error:	0.0 usft
Reference		Offset		Semi Major Axis		Highside Toolface (°)	Distance		Total Uncertainty Axis	Separation Factor	Warning			
Measured Depth (usft)	Vertical Depth (usft)	Measured Depth (usft)	Vertical Depth (usft)	Reference (usft)	Offset (usft)		Offset Wellbore Centre +N/-S (usft)	+E/-W (usft)						
0.0	0.0	0.0	0.0	0.0	0.0	-150.27	-6.9	-4.0	8.0					
100.0	100.0	100.0	100.0	0.1	0.1	-150.27	-6.9	-4.0	8.0	7.8	0.18	45.457		
200.0	200.0	200.0	200.0	0.3	0.3	-150.27	-6.9	-4.0	8.0	7.3	0.62	12.754		
255.6	255.6	255.6	255.6	0.4	0.4	-150.27	-6.9	-4.0	8.0	7.1	0.87	9.111 CC		
300.0	300.0	299.9	299.9	0.5	0.5	-149.78	-7.0	-4.1	8.1	7.0	1.07	7.595 ES		
400.0	400.0	399.4	399.3	0.8	0.7	-39.13	-9.2	-7.3	10.6	9.1	1.50	7.058 SF		
500.0	499.8	498.8	498.3	1.0	1.0	-42.40	-14.4	-14.7	14.0	12.1	1.99	7.067		
600.0	599.1	598.2	596.8	1.2	1.3	-48.62	-22.4	-26.0	18.3	15.8	2.50	7.317		
700.0	698.3	698.1	695.6	1.5	1.6	-53.77	-30.8	-38.0	22.6	19.6	3.01	7.506		
800.0	797.4	798.0	794.3	1.8	1.9	-57.24	-39.3	-50.1	27.1	23.5	3.58	7.571		
900.0	896.6	897.9	893.1	2.1	2.3	-59.72	-47.8	-62.2	31.6	27.5	4.17	7.582		
1,000.0	995.8	997.8	991.9	2.4	2.6	-61.58	-56.3	-74.3	36.2	31.4	4.78	7.572		
1,100.0	1,095.0	1,097.7	1,090.7	2.8	3.0	-63.01	-64.7	-86.4	40.8	35.4	5.41	7.553		
1,200.0	1,194.1	1,197.6	1,189.5	3.1	3.3	-64.16	-73.2	-98.5	45.5	39.4	6.04	7.532		
1,300.0	1,293.3	1,297.5	1,288.3	3.4	3.7	-65.09	-81.7	-110.6	50.1	43.5	6.67	7.510		
1,400.0	1,392.5	1,397.4	1,387.1	3.7	4.0	-65.86	-90.2	-122.7	54.8	47.5	7.32	7.490		
1,500.0	1,491.7	1,497.2	1,485.9	4.1	4.4	-66.52	-98.7	-134.8	59.5	51.5	7.96	7.472		
1,600.0	1,590.9	1,597.1	1,584.7	4.4	4.8	-67.07	-107.1	-146.9	64.1	55.5	8.60	7.455		
1,700.0	1,690.0	1,697.0	1,683.5	4.7	5.1	-67.55	-115.6	-158.9	68.8	59.6	9.25	7.439		
1,800.0	1,789.2	1,796.9	1,782.3	5.1	5.5	-67.97	-124.1	-171.0	73.5	63.6	9.90	7.425		
1,900.0	1,888.4	1,896.8	1,881.1	5.4	5.8	-68.34	-132.6	-183.1	78.2	67.7	10.55	7.412		
2,000.0	1,987.6	1,996.7	1,979.8	5.7	6.2	-68.67	-141.0	-195.2	82.9	71.7	11.20	7.401		
2,100.0	2,086.7	2,096.6	2,078.6	6.1	6.6	-68.96	-149.5	-207.3	87.6	75.7	11.85	7.390		
2,200.0	2,185.9	2,196.5	2,177.4	6.4	6.9	-69.23	-158.0	-219.4	92.3	79.8	12.51	7.381		
2,300.0	2,285.1	2,296.3	2,276.2	6.7	7.3	-69.46	-166.5	-231.5	97.0	83.8	13.16	7.372		
2,400.0	2,384.3	2,396.2	2,375.0	7.0	7.6	-69.68	-175.0	-243.6	101.7	87.9	13.81	7.364		
2,500.0	2,483.4	2,496.1	2,473.8	7.4	8.0	-69.88	-183.4	-255.7	106.4	91.9	14.46	7.357		
2,600.0	2,582.6	2,596.0	2,572.6	7.7	8.4	-70.06	-191.9	-267.8	111.1	96.0	15.12	7.350		
2,700.0	2,681.8	2,695.9	2,671.4	8.0	8.7	-70.22	-200.4	-279.8	115.8	100.0	15.77	7.344		
2,800.0	2,781.0	2,795.8	2,770.2	8.4	9.1	-70.37	-208.9	-291.9	120.5	104.1	16.42	7.338		
2,900.0	2,880.2	2,895.7	2,869.0	8.7	9.4	-70.51	-217.3	-304.0	125.2	108.1	17.08	7.333		
3,000.0	2,979.3	2,995.6	2,967.8	9.0	9.8	-70.64	-225.8	-316.1	129.9	112.2	17.73	7.328		
3,100.0	3,078.5	3,095.5	3,066.5	9.4	10.2	-70.77	-234.3	-328.2	134.6	116.3	18.39	7.323		
3,200.0	3,177.7	3,195.3	3,165.3	9.7	10.5	-70.88	-242.8	-340.3	139.4	120.3	19.04	7.319		
3,300.0	3,276.9	3,295.2	3,264.1	10.0	10.9	-70.99	-251.3	-352.4	144.1	124.4	19.69	7.315		
3,400.0	3,376.0	3,395.1	3,362.9	10.4	11.3	-71.08	-259.7	-364.5	148.8	128.4	20.35	7.311		
3,500.0	3,475.2	3,495.0	3,461.7	10.7	11.6	-71.18	-268.2	-376.6	153.5	132.5	21.00	7.308		
3,600.0	3,574.4	3,594.9	3,560.5	11.0	12.0	-71.27	-276.7	-388.6	158.2	136.5	21.66	7.305		
3,700.0	3,673.6	3,694.8	3,659.3	11.4	12.3	-71.35	-285.2	-400.7	162.9	140.6	22.31	7.302		
3,800.0	3,772.7	3,794.7	3,758.1	11.7	12.7	-71.43	-293.6	-412.8	167.6	144.7	22.96	7.299		
3,900.0	3,871.9	3,894.6	3,856.9	12.0	13.1	-71.50	-302.1	-424.9	172.3	148.7	23.62	7.296		
4,000.0	3,971.1	3,994.5	3,955.7	12.4	13.4	-71.57	-310.6	-437.0	177.0	152.8	24.27	7.294		
4,100.0	4,070.3	4,094.3	4,054.5	12.7	13.8	-71.63	-319.1	-449.1	181.8	156.8	24.93	7.292		
4,200.0	4,169.5	4,194.2	4,153.3	13.0	14.2	-71.70	-327.6	-461.2	186.5	160.9	25.58	7.289		
4,300.0	4,268.6	4,294.1	4,252.0	13.4	14.5	-71.76	-336.0	-473.3	191.2	164.9	26.23	7.287		
4,400.0	4,367.8	4,394.0	4,350.8	13.7	14.9	-71.81	-344.5	-485.4	195.9	169.0	26.89	7.286		

Cathedral Energy Services

Anticollision Report

Company:	Caerus Oil & Gas (NAD 27)	Local Co-ordinate Reference:	Well PUCKETT 44B-2
Project:	Garfield County, CO	TVD Reference:	KB=22' @ 8446.0usft
Reference Site:	S2-T7S-R97W (Puckett Pad P2)	MD Reference:	KB=22' @ 8446.0usft
Site Error:	0.0usft	North Reference:	True
Reference Well:	PUCKETT 44B-2	Survey Calculation Method:	Minimum Curvature
Well Error:	0.0usft	Output errors are at	2.00 sigma
Reference Wellbore	DD	Database:	USA EDM 5000 Multi Users DB
Reference Design:	Plan #1	Offset TVD Reference:	Offset Datum

Offset Design S2-T7S-R97W (Puckett Pad P2) - PUCKETT 44D-2 - DD - Plan #1												Offset Site Error: 0.0 usft	
Survey Program: 0-ISCSWA MWD												Offset Well Error: 0.0 usft	
Reference		Offset		Semi Major Axis			Distance						Warning
Measured Depth (usft)	Vertical Depth (usft)	Measured Depth (usft)	Vertical Depth (usft)	Reference (usft)	Offset (usft)	Highside Toolface (°)	Offset Wellbore Centre +N/-S (usft)	+E/-W (usft)	Between Centres (usft)	Between Ellipses (usft)	Total Uncertainty Axis	Separation Factor	
0.0	0.0	0.0	0.0	0.0	0.0	-148.91	-13.1	-7.9	15.3				
100.0	100.0	100.0	100.0	0.1	0.1	-148.91	-13.1	-7.9	15.3	15.1	0.18	87.308	
200.0	200.0	200.0	200.0	0.3	0.3	-148.91	-13.1	-7.9	15.3	14.7	0.62	24.497	CC, ES
300.0	300.0	299.4	299.4	0.5	0.5	-147.94	-14.2	-8.9	16.7	15.7	1.06	15.834	
400.0	400.0	398.3	398.0	0.8	0.7	-40.20	-18.9	-13.2	22.0	20.5	1.51	14.603	
500.0	499.8	496.7	495.8	1.0	1.0	-44.54	-27.4	-20.9	28.6	26.6	2.00	14.313	SF
600.0	599.1	595.3	593.0	1.2	1.3	-50.69	-39.4	-31.9	36.6	34.1	2.52	14.560	
700.0	698.3	694.8	690.9	1.5	1.7	-55.36	-52.5	-43.8	45.5	42.4	3.04	14.935	
800.0	797.4	794.4	788.9	1.8	2.1	-58.51	-65.6	-55.7	54.5	50.8	3.62	15.065	
900.0	896.6	893.9	886.9	2.1	2.5	-60.75	-78.7	-67.7	63.6	59.4	4.22	15.085	
1,000.0	995.8	993.5	984.8	2.4	2.9	-62.43	-91.8	-79.6	72.8	68.0	4.83	15.059	
1,100.0	1,095.0	1,093.0	1,082.8	2.8	3.3	-63.73	-104.9	-91.5	82.0	76.6	5.46	15.015	
1,200.0	1,194.1	1,192.6	1,180.8	3.1	3.7	-64.77	-118.0	-103.5	91.3	85.2	6.10	14.966	
1,300.0	1,293.3	1,292.1	1,278.7	3.4	4.1	-65.62	-131.2	-115.4	100.6	93.9	6.75	14.918	
1,400.0	1,392.5	1,391.7	1,376.7	3.7	4.5	-66.32	-144.3	-127.3	109.9	102.6	7.39	14.872	
1,500.0	1,491.7	1,491.3	1,474.7	4.1	4.9	-66.92	-157.4	-139.3	119.3	111.2	8.04	14.830	
1,600.0	1,590.9	1,590.8	1,572.6	4.4	5.3	-67.42	-170.5	-151.2	128.6	119.9	8.70	14.791	
1,700.0	1,690.0	1,690.4	1,670.6	4.7	5.7	-67.86	-183.6	-163.1	138.0	128.6	9.35	14.756	
1,800.0	1,789.2	1,789.9	1,768.6	5.1	6.1	-68.24	-196.7	-175.1	147.3	137.3	10.01	14.725	
1,900.0	1,888.4	1,889.5	1,866.5	5.4	6.5	-68.58	-209.8	-187.0	156.7	146.1	10.66	14.696	
2,000.0	1,987.6	1,989.0	1,964.5	5.7	6.9	-68.88	-222.9	-198.9	166.1	154.8	11.32	14.670	
2,100.0	2,086.7	2,088.6	2,062.5	6.1	7.3	-69.15	-236.0	-210.9	175.5	163.5	11.98	14.646	
2,200.0	2,185.9	2,188.1	2,160.4	6.4	7.7	-69.39	-249.1	-222.8	184.9	172.2	12.64	14.625	
2,300.0	2,285.1	2,287.7	2,258.4	6.7	8.1	-69.60	-262.2	-234.7	194.2	180.9	13.30	14.606	

Cathedral Energy Services

Anticollision Report

Company:	Caerus Oil & Gas (NAD 27)	Local Co-ordinate Reference:	Well PUCKETT 44B-2
Project:	Garfield County, CO	TVD Reference:	KB=22' @ 8446.0usft
Reference Site:	S2-T7S-R97W (Puckett Pad P2)	MD Reference:	KB=22' @ 8446.0usft
Site Error:	0.0usft	North Reference:	True
Reference Well:	PUCKETT 44B-2	Survey Calculation Method:	Minimum Curvature
Well Error:	0.0usft	Output errors are at	2.00 sigma
Reference Wellbore	DD	Database:	USA EDM 5000 Multi Users DB
Reference Design:	Plan #1	Offset TVD Reference:	Offset Datum

Reference Depths are relative to KB=22' @ 8446.0usft
Offset Depths are relative to Offset Datum
Central Meridian is -105.500000 °

Coordinates are relative to: PUCKETT 44B-2
Coordinate System is US State Plane 1927 (Exact solution), Colorado Central 502
Grid Convergence at Surface is: -1.69°

