

The Road to Excellence Starts with Safety

| | | | | | | | |
|---|--|----------------------------|----------------------|--|--|----------------------------------|--|
| Sold To #: 338668 | | Ship To #: 338668 | | Quote #: 0021940248 | | Sales Order #: 0901735920 | |
| Customer: CHEVRON - MID-CONTINENT EBIZ | | | | Customer Rep: ALVIN | | | |
| Well Name: Grey | | | Well #: B-19X | | | API/UWI #: | |
| Field: | | City (SAP): Rangely | | County/Parish: RIO BLANCO | | State: COLORADO | |
| Legal Description: | | | | | | | |
| Contractor: | | | | Rig/Platform Name/Num: WORKOVER | | | |
| Job BOM: 14099 | | | | | | | |
| Well Type: OIL & GAS WELL | | | | | | | |
| Sales Person: HALAMERICA\HX20741 | | | | Srv Supervisor: Eric Fuchs | | | |
| Job | | | | | | | |

| | | | |
|-------------------------------|-------------|--------------------------|----------------------|
| Formation Name | | | |
| Formation Depth (MD) | Top | | Bottom |
| Form Type | | | BHST |
| Job depth MD | 1275ft | | Job Depth TVD |
| Water Depth | | Wk Ht Above Floor | 5 |
| Perforation Depth (MD) | From | | To |

| Well Data | | | | | | | | | | |
|-------------------|------------|---------|-------|---------------|--------|-------|-----------|--------------|------------|---------------|
| Description | New / Used | Size in | ID in | Weight lbm/ft | Thread | Grade | Top MD ft | Bottom MD ft | Top TVD ft | Bottom TVD ft |
| Well Attachment | | | | | | | | 1150 | | |
| Casing | | 10.75 | 10.05 | 40.5 | | | 0 | 704 | | |
| Tubing | | 2.875 | 2.441 | 6.4 | | | 0 | 1150 | | |
| Casing | | 7 | 6.366 | 23 | | | 0 | 1275 | | |
| Open Hole Section | | | 9 | | | | 704 | 1275 | | |

| Tools and Accessories | | | | | | | | | |
|-----------------------|---------|-----|------|----------|--|----------------|---------|-----|------|
| Type | Size in | Qty | Make | Depth ft | | Type | Size in | Qty | Make |
| Guide Shoe | 2.875 | 1 | | 1150 | | Top Plug | 2.875 | | HES |
| Float Shoe | 2.875 | | | | | Bottom Plug | 2.875 | | HES |
| Float Collar | 2.875 | | | | | SSR plug set | 2.875 | | HES |
| Insert Float | 2.875 | | | | | Plug Container | 2.875 | | HES |
| Stage Tool | 2.875 | | | | | Centralizers | 2.875 | | HES |

| Miscellaneous Materials | | | | | | | | | | |
|-------------------------|--|------|--|------------|--|------|--|-----------|--|------|
| Gelling Agt | | Conc | | Surfactant | | Conc | | Acid Type | | Qty |
| Treatment Fld | | Conc | | Inhibitor | | Conc | | Sand Type | | Size |

| Fluid Data | | | | | | | | | | |
|------------------------|--------------|--------------|-----|---------|------------------------|-----------------------------|---------------|--------------|---------------------|--|
| Stage/Plug #: 1 | | | | | | | | | | |
| Fluid # | Stage Type | Fluid Name | Qty | Qty UoM | Mixing Density lbm/gal | Yield ft ³ /sack | Mix Fluid Gal | Rate bbl/min | Total Mix Fluid Gal | |
| 1 | Water Spacer | Water Spacer | 5 | bbl | 8.33 | | | | | |

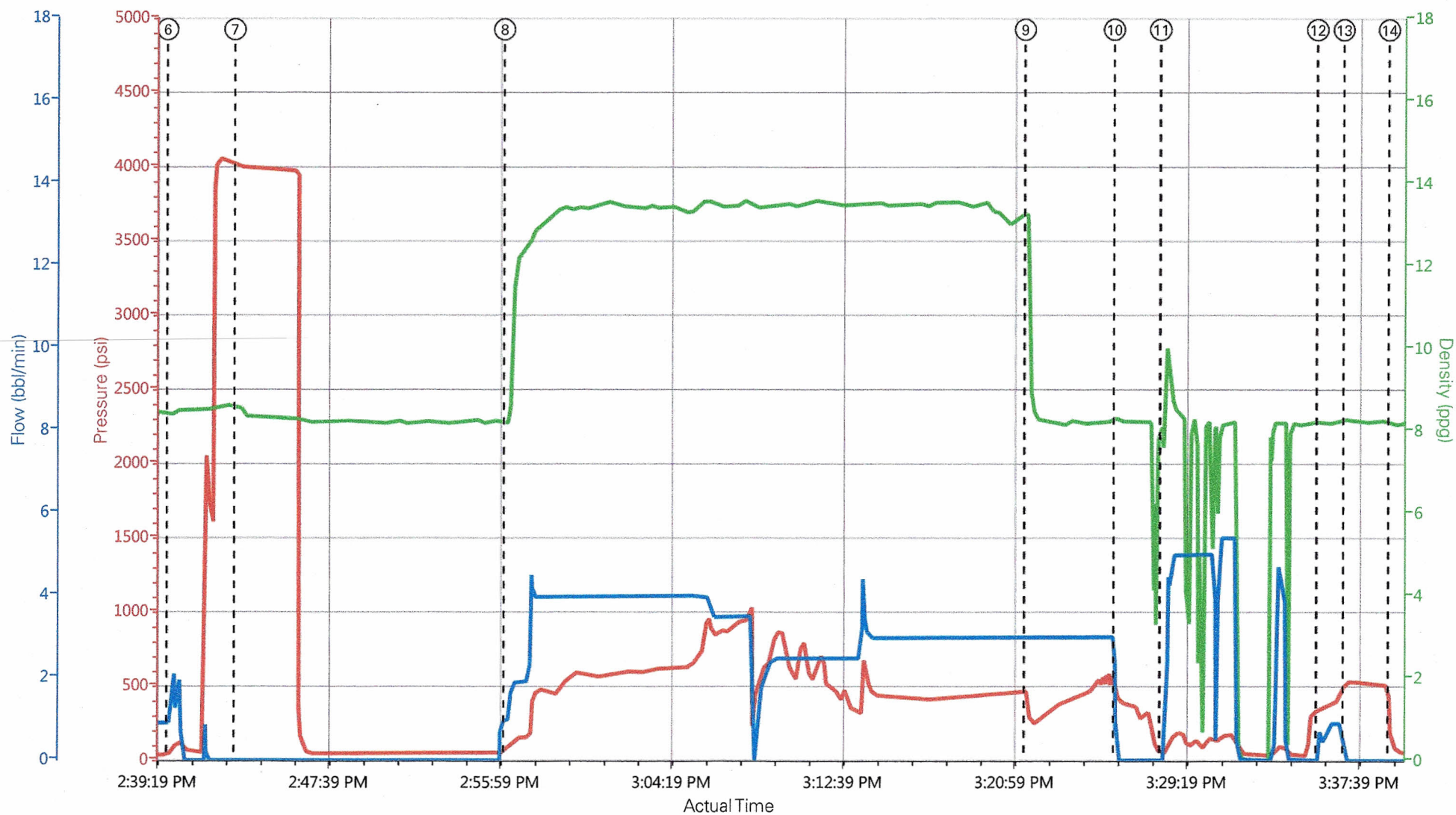
| Fluid # | Stage Type | Fluid Name | Qty | Qty UoM | Mixing Density lbm/gal | Yield ft ³ /sack | Mix Fluid Gal | Rate bbl/min | Total Mix Fluid Gal |
|---------------------|----------------|---------------------|-----------|--------------|---------------------------|--------------------------------|------------------|-----------------|---------------------------|
| 2 | Primary Cement | BONDCEM (TM) SYSTEM | 300 77 | Sack Bbls | 13.5 | 1.44 | | 4 | 6.93 |
| 6.93 Gal | | FRESH WATER | | | | | | | |
| | | | | | | | | | |
| Fluid # | Stage Type | Fluid Name | Qty | Qty UoM | Mixing Density lbm/gal | Yield ft ³ /sack | Mix Fluid Gal | Rate bbl/min | Total Mix Fluid Gal |
| 3 | Displacement | Displacement | 8 | bbl | 8.34 | | | | |
| | | | | | | | | | |
| Cement Left In Pipe | | Amount | ft | Reason | | | Shoe Joint | | |
| Comment | | | | | | | | | |

Signature _____

1.1 Job Event Log

| Type | Seq. No. | Activity | Graph Label | Date | Time | Source | Driv-Side Pump Pressure (psi) | Downhole Density (ppg) | Combined Pump Rate (bbl/min) | Comment |
|-------|----------|--|--|-----------|----------|--------|-------------------------------|------------------------|------------------------------|--|
| Event | 1 | Call Out | Call Out | 10/9/2014 | 09:00:00 | USER | | | | CREW IS CALLED OUT |
| Event | 2 | Depart from Service Center or Other Site | Depart from Service Center or Other Site | 10/9/2014 | 12:00:00 | USER | | | | CREW LEAVES THE YARD |
| Event | 3 | Arrive At Loc | Arrive At Loc | 10/9/2014 | 13:05:00 | USER | | | | CREW ARRIVES AT LOCATION |
| Event | 4 | Pre-Job Safety Meeting | Pre-Job Safety Meeting | 10/9/2014 | 14:15:00 | USER | 334.00 | 8.50 | 10.50 | CREW HAS PRE JOB SAFETY MEETING WITH RIG CREW AND COMPANY REP |
| Event | 5 | Start Job | Start Job | 10/9/2014 | 14:36:13 | USER | 37.00 | 8.31 | 0.90 | START JOB |
| Event | 6 | Other | Fill Lines | 10/9/2014 | 14:39:56 | COM13 | 51.00 | 8.31 | 1.80 | FILL LINES WITH 2 BBLS WATER, AND GOT CIRCULATION WITH IT |
| Event | 7 | Test Lines | Test Lines | 10/9/2014 | 14:43:12 | COM13 | 4007.00 | 8.57 | 0.00 | TEST LINES TO 4000 PSI |
| Event | 8 | Pump Cement | Pump Cement | 10/9/2014 | 14:56:19 | COM13 | 79.00 | 8.19 | 1.00 | PUMP 77 BBLS CEMENT |
| Event | 9 | Pump Displacement | Pump Displacement | 10/9/2014 | 15:21:36 | COM13 | 456.00 | 13.27 | 3.00 | PUMP 8 BBLS WATER DISPLACEMENT |
| Event | 10 | Shutdown | Shutdown | 10/9/2014 | 15:25:55 | COM13 | 446.00 | 8.29 | 0.00 | SHUTDOWN WE GOT 10 BBLS OF CEMENT TO SURFACE |
| Event | 11 | Clean Lines | Clean Lines | 10/9/2014 | 15:28:09 | USER | 50.00 | 7.58 | 0.00 | CLEAN LINES TO THE PIT |
| Event | 12 | Pump Displacement | Pump Displacement | 10/9/2014 | 15:35:43 | USER | 346.00 | 8.22 | 0.70 | PUMP 1 BBLS WATER, |
| Event | 13 | Shutdown | Shutdown | 10/9/2014 | 15:36:59 | USER | 527.00 | 8.25 | 0.00 | SHUTDOWN PUT 500 PSI ON THE WELL AND IT WAS HOLDING VERY GOOD. SO THEY SAID WE WERE DONE |
| Event | 14 | Sting out | Sting out | 10/9/2014 | 15:39:10 | USER | 134.00 | 8.12 | 0.00 | STING OUT. AND THE ARE JUST GOING TO SHUT IT IN |
| Event | 15 | End Job | End Job | 10/9/2014 | 15:42:33 | COM13 | 37.00 | 8.22 | 0.00 | END JOB |
| Event | 16 | Depart Location | Depart Location | 10/9/2014 | 16:30:00 | USER | | | | LEAVE LOCAITON |

Chevron Re-Cement



DS Pump Press (psi) DH Density (ppg) Comb Pump Rate (bbl/min)

- | | | | |
|--|--------------------------|-----------------------------------|-------------------------------|
| ① Call Out n/a;n/a;n/a | ⑤ Start Job 37;8.31;0.9 | ⑨ Pump Displacement 369;13.27;3.1 | ⑬ Shutdown 527;8.25;0 |
| ② Depart from Service Center or Other Site n/a;n/a;n/a | ⑥ Fill Lines 51;8.31;1.8 | ⑩ Shutdown 431;8.28;0 | ⑭ Sting out 134;8.12;0 |
| ③ Arrive At Loc n/a;n/a;n/a | ⑦ Test Lines 4006;8.56;0 | ⑪ Clean Lines 51;7.62;0 | ⑮ End Job 37;8.22;0 |
| ④ Pre-Job Safety Meeting 338;8.5;10.5 | ⑧ Pump Cement 80;8.16;1 | ⑫ Pump Displacement 346;8.22;0.7 | ⑯ Depart Location n/a;n/a;n/a |

▼ **HALLIBURTON** | iCem® Service

Created: 2014-10-09 14:05:15, Version: 3.0.121

Edit

Customer: CHEVRON - MID-CONTINENT EBIZ

Representative: Eric Fuchs

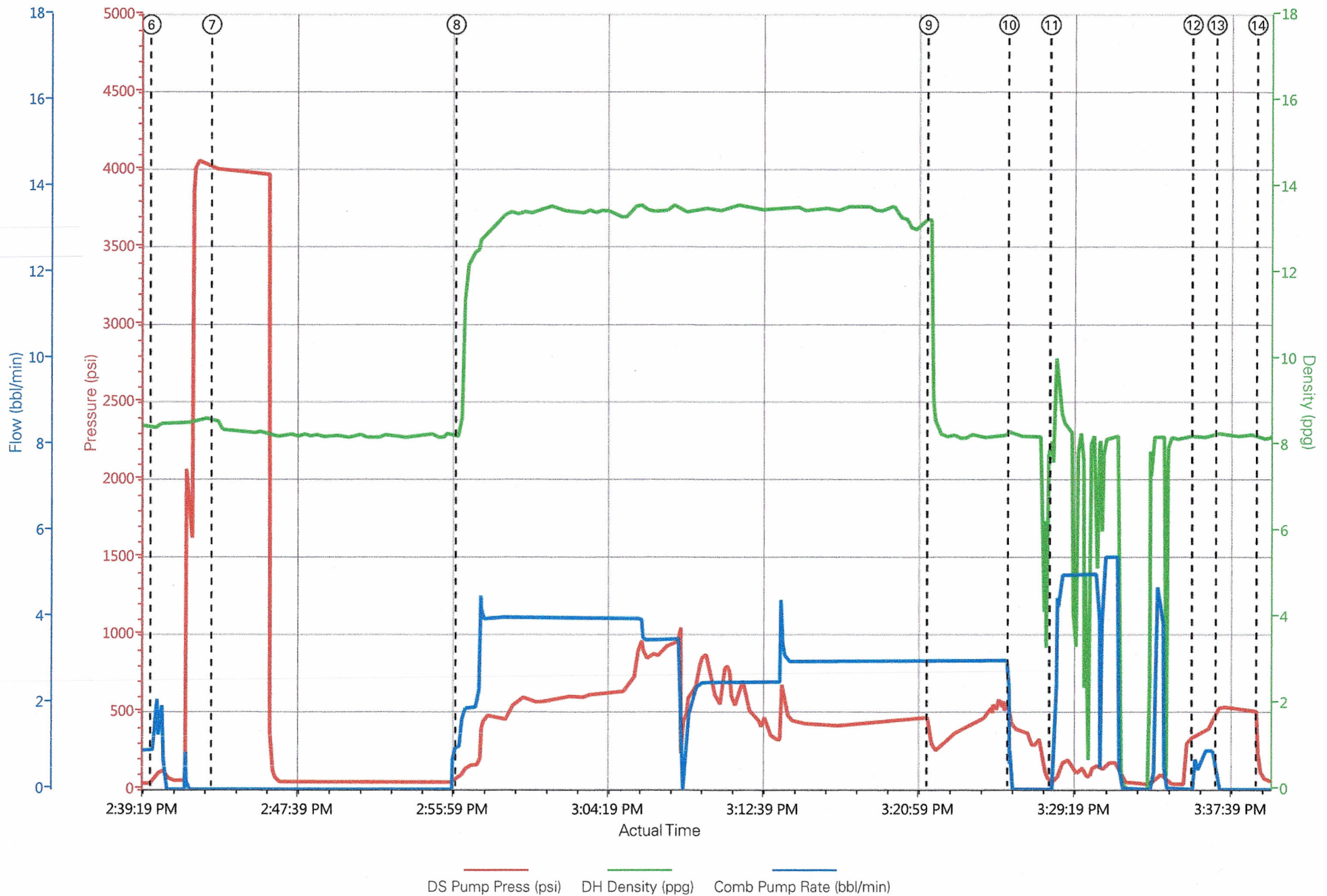
Job Date: 10/9/2014 2:07:35 PM

Sales Order #: 901735920

Well: Grey B-19X

Elite Number: 10872113

Chevron Re-Cement No Events



Chevron Re-Cement Pressure Test

