

T7S, R97W, 6th P.M.

Caerus Oil & Gas LLC

PUCKETT #11A-12 (SURFACE LOCATION)  
SE 1/4 SE 1/4, SECTION 2, T7S, R97W, 6th P.M.  
GARFIELD COUNTY, COLORADO

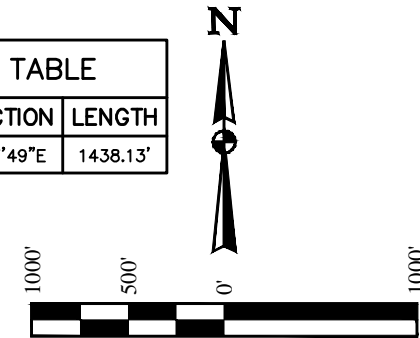
BASIS OF BEARINGS

BASIS OF BEARINGS IS A G.P.S. OBSERVATION

BASIS OF ELEVATION

SPOT ELEVATION AT THE NORTHWEST CORNER OF SECTION 30,  
T5S, R95W, 6th P.M. TAKEN FROM THE FORKED GULCH  
QUADRANGLE, COLORADO, GARFIELD COUNTY, 7.5 MINUTE SERIES  
(TOPOGRAPHICAL MAP) PUBLISHED BY THE UNITED STATES  
DEPARTMENT OF THE INTERIOR, GEOLOGICAL SURVEY. SAID  
ELEVATION IS MARKED AS BEING 5966 FEET.

LINE TABLE		
LINE	DIRECTION	LENGTH
L1	S21°37'49"E	1438.13'



1923 Brass Cap,  
0.8' High, Pile of  
Stones, Steel Post  
Lat: 39.474592°  
Long: 108.177997°

NOTE:  
THE PROPOSED TARGET BOTTOM HOLE FOR  
THIS WELL IS LOCATED IN THE NW 1/4 NW  
1/4 OF SECTION 12, T7S, R97W, 6th P.M.  
AT 290' FNL 192' FWL IT BEARS  
S21°37'49"E 1438.13' FROM THE PROPOSED  
WELLHEAD.

CERTIFICATE  
THIS IS TO CERTIFY THAT THE ABOVE PLAT WAS PREPARED FROM FIELD  
NOTES OF ACTUAL SURVEYS MADE BY ME OR UNDER MY SUPERVISION  
AND THAT THE SAME ARE TRUE AND CORRECT TO THE BEST OF MY  
KNOWLEDGE AND BELIEF.

REGISTERED LAND SURVEYOR  
REGISTRATION NO. 38130  
STATE OF COLORADO  
08-16-14

UELS, LLC  
Corporate Office \* 85 South 200 East  
Vernal, UT 84078 \* (435) 789-1017



SURVEYED BY: BRADEN BOX, J.C.	DATE: 08-21-14
DRAWN BY: M.D.	DATE DRAWN: 09-16-14
SCALE: 1" = 1000'	REVISED: 00-00-00

**WELL LOCATION PLAT**

1920 Brass Cap,  
1.5' High  
Lat: 39.481792°  
Long: 108.196089°

1920 Brass Cap,  
0.5' High  
Lat: 39.481794°  
Long: 108.187419°

1920 Brass Cap,  
0.6' High, Steel  
Post  
Lat: 39.481786°  
Long: 108.178033°

T6S  
T7S  
S89°52'11"W - 2626.80' (Meas.)  
N89°53'56"W - 2650.16' (Meas.)

TRACT 68

TRACT 65

TRACT 69

TRACT 66

2

LOT 8

LOT 7

LOT 6

LOT 5

PUCKETT #11A-12  
Elev. Ungraded Ground = 8430.7'

333'  
1046'

Target  
Bottom Hole

PDOP = 1.2

1923 Brass Cap,  
1.5' High  
Lat: 39.467408°  
Long: 108.196058°

1923 Brass Cap,  
2.0' High  
Lat: 39.467350°  
Long: 108.187283°

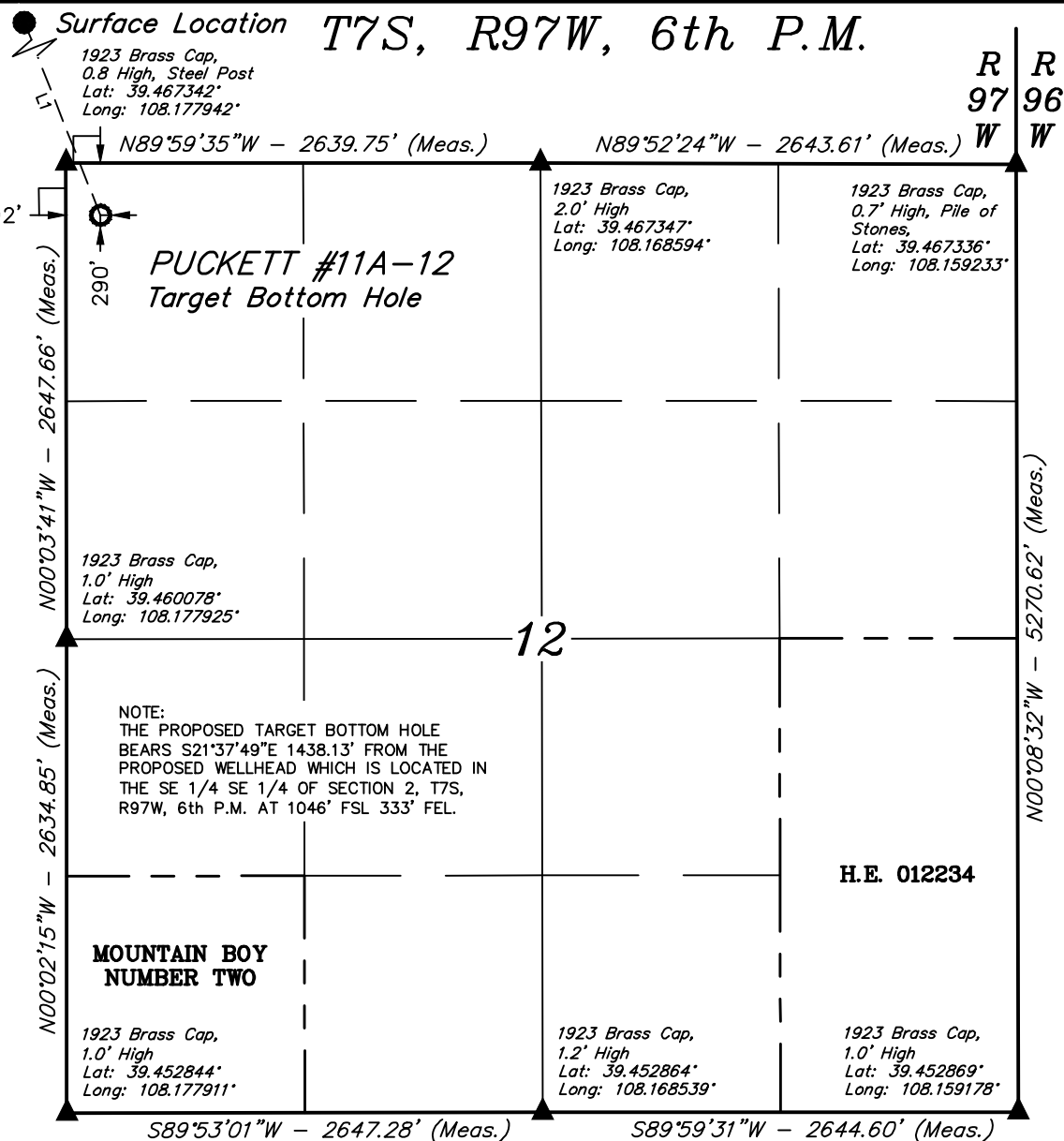
1923 Brass Cap,  
0.8' High, Steel Post  
Lat: 39.467342°  
Long: 108.177942°

N89°42'45"W - 2654.08' (Meas.)  
N89°53'38"W - 2637.78' (Meas.)

**LEGEND:**

- = 90° SYMBOL
- = PROPOSED WELLHEAD.
- = TARGET BOTTOM HOLE.
- ▲ = SECTION CORNERS LOCATED.

NAD 83 (SURFACE LOCATION)	
LATITUDE = 39°28'12.78" (39.470217)	
LONGITUDE = 108°10'44.91" (108.179142)	
NAD 27 (SURFACE LOCATION)	
LATITUDE = 39°28'12.86" (39.470239)	
LONGITUDE = 108°10'42.62" (108.178506)	



## Caerus Oil & Gas LLC

**PUCKETT #11A-12 (TARGET BOTTOM HOLE)  
NW 1/4 NW 1/4, SECTION 12, T7S, R97W, 6th P.M.  
GARFIELD COUNTY, COLORADO**

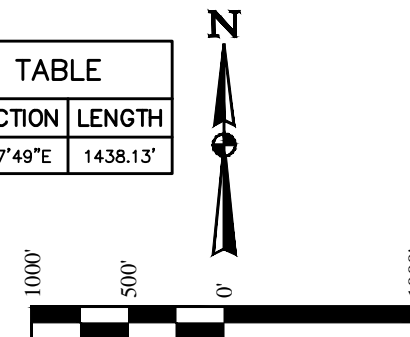
### BASIS OF BEARINGS

BASIS OF BEARINGS IS A G.P.S. OBSERVATION

### BASIS OF ELEVATION

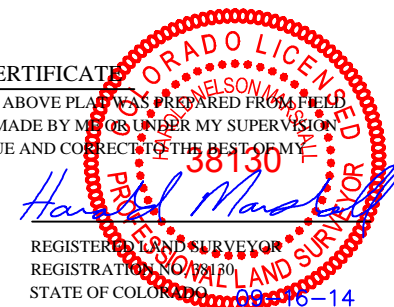
SPOT ELEVATION AT THE NORTHWEST CORNER OF SECTION 30,  
T5S, R95W, 6th P.M. TAKEN FROM THE FORKED GULCH  
QUADRANGLE, COLORADO, GARFIELD COUNTY, 7.5 MINUTE SERIES  
(TOPOGRAPHICAL MAP) PUBLISHED BY THE UNITED STATES  
DEPARTMENT OF THE INTERIOR, GEOLOGICAL SURVEY. SAID  
ELEVATION IS MARKED AS BEING 5966 FEET.

LINE TABLE		
LINE	DIRECTION	LENGTH
L1	S21°37'49"E	1438.13'



### CERTIFICATE

THIS IS TO CERTIFY THAT THE ABOVE PLAT WAS PREPARED FROM FIELD  
NOTES OF ACTUAL SURVEYS MADE BY ME OR UNDER MY SUPERVISION  
AND THAT THE SAME ARE TRUE AND CORRECT TO THE BEST OF MY  
KNOWLEDGE AND BELIEF.



### LEGEND:

- = 90° SYMBOL
- = PROPOSED WELLHEAD.
- = TARGET BOTTOM HOLE.
- ▲ = SECTION CORNERS LOCATED.

NAD 83 (TARGET BOTTOM HOLE)	
LATITUDE = 39°27'59.57" (39.466547)	
LONGITUDE = 108°10'38.14" (108.177261)	
NAD 27 (TARGET BOTTOM HOLE)	
LATITUDE = 39°27'59.65" (39.466569)	
LONGITUDE = 108°10'35.85" (108.176625)	



**UELS, LLC**  
Corporate Office \* 85 South 200 East  
Vernal, UT 84078 \* (435) 789-1017

SURVEYED BY: BRADEN BOX, J.C.	DATE: 08-21-14
DRAWN BY: M.D.	DATE DRAWN: 09-16-14
SCALE: 1" = 1000'	REVISED: 00-00-00

**WELL LOCATION PLAT**