



*T7S*



TRACT 65

TRACT 62

LINE TABLE		
LINE	DIRECTION	LENGTH
L1	N50°05'03"W	1096.49'
L2	N65°18'02"W	920.04'
L3	N85°34'00"W	833.29'
L4	S72°51'04"W	864.04'
L5	S54°59'03"W	1001.86'
L6	S42°22'03"W	1209.96'
L7	S17°05'04"E	1814.93'
L8	S21°37'49"E	1438.13'
L9	S53°49'35"E	1313.09'
L10	S67°59'30"E	1121.56'
L11	S69°16'14"E	2509.74'
L12	S76°05'42"E	2442.23'
L13	N88°47'47"E	2355.02'
L14	S80°45'53"E	1054.89'
L15	N85°20'47"E	1018.35'
L16	N69°00'32"E	1078.07'

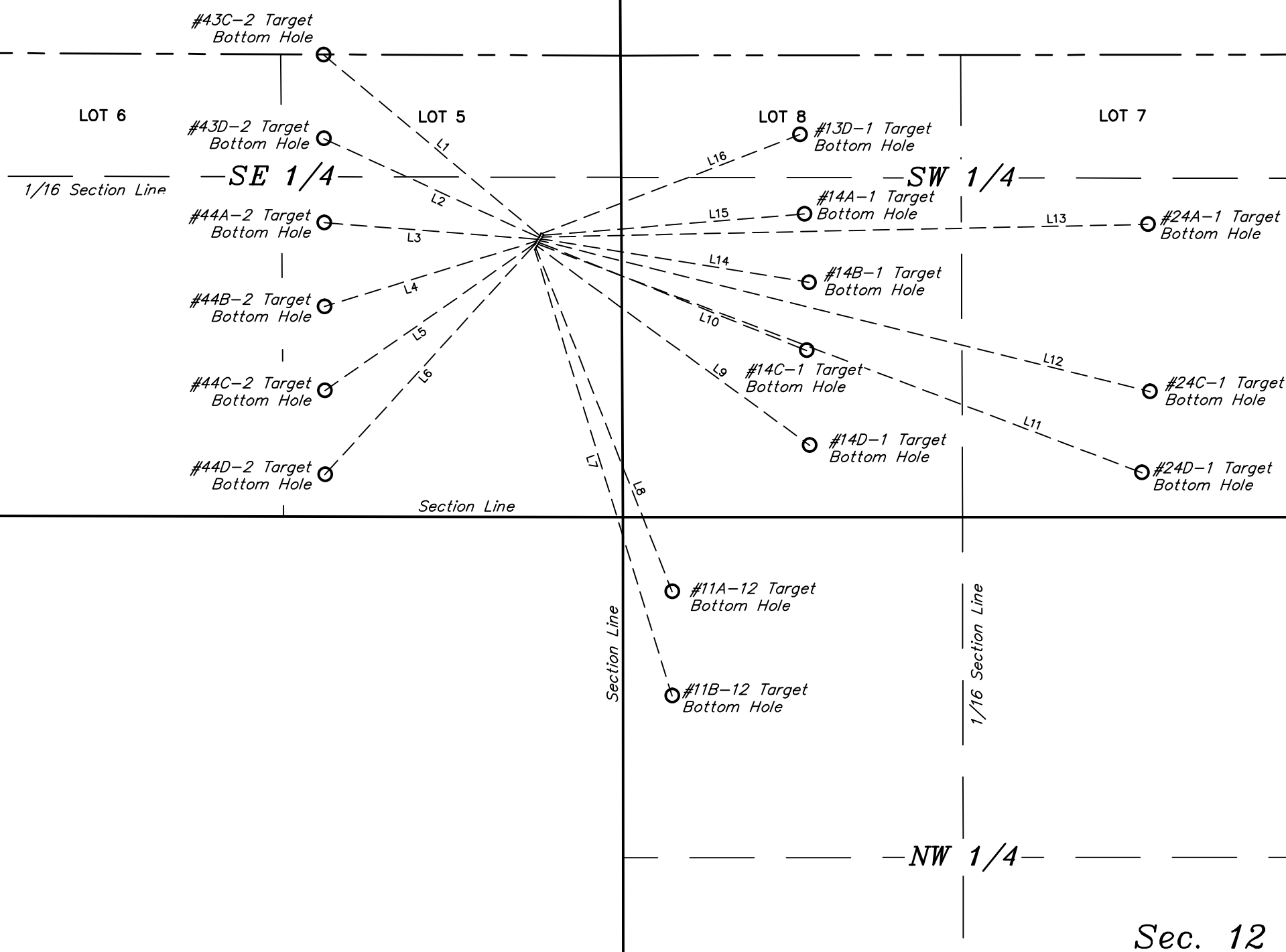


*Sec. 2*

*Sec. 1*

TRACT 66

TRACT 63



**NOTES:**

**Caerus Oil & Gas LLC**

**MESA P2-797**  
**SECTION 2, T7S, R97W, 6th P.M.**  
**SE 1/4 SE 1/4**



**UELS, LLC**  
Corporate Office \* 85 South 200 East  
Vernal, UT 84078 \* (435) 789-1017

DRAWN BY: M.D.	DATE DRAWN: 09-18-14
SCALE: 1" = 500'	REVISED: 00-00-00

## MULTI-WELL PLAN

### FIGURE #7