

PSC 32-9A 05-123-17771 - Planned WBD (P&A)

12-1/4" Surface Hole

7-7/8" Prod Hole

Existing

Planned

KB: 4785'
GL: 4771'

Welded Cap
Cement to surface

8 5/8", 24# Sfc Csg set @ 347'

CIBP @ 80'

Fox Hills Marker 647'

290 sx

290 sk cmt plug 850' - 150'

3 1/2" casing cut @ 750'

Sussex Top @ 3956'

280 sx

TOC 3600' ID
Design TOC 3700'

280 sk cement squeeze

Squeeze Perfs 4200'

TOC 6302' CBL 1/24/94

25 sx

Cement Plug 25 sx 6820'-6150'

NB Top @ 6803'

CIBP @ 6820'

Niobrara Perfs 6874'-6880'

Codell perfs 7084' - 7094'

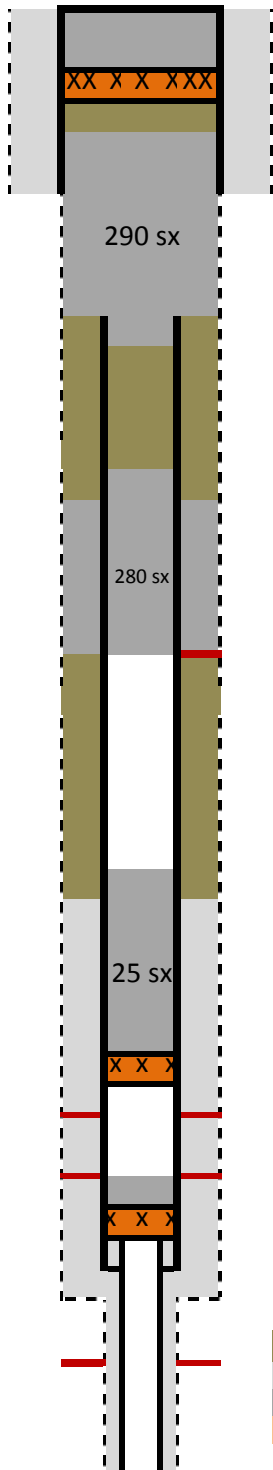
CIBP w/ 1 sk cement cap 7135'

3 1/2" 7.7# Prod Csg @ 7196'
TD @ 7215' 1/20/1994

J sand Perfs 7527'-7571'

2 3/8" Liner 7140'-7690'

Deepened TD 7690' 10/31/02



- Mud
- Existing Cement
- New Cement
- Sand Plug