



# Kerr-McGee Oil & Gas Onshore LP

A subsidiary of Anadarko Petroleum Corporation

1099 18<sup>th</sup> Street  
Denver, CO 80202  
720-929-6000

October 20, 2014

Department of Natural Resources  
Oil and Gas Conservation Commission  
The Chancery Building  
1120 Lincoln St., Suite 801  
Denver, CO 80203

Re: **30 Day Certification Letter - 318A.e**  
STEWARD 36C-6HZ  
Township 1 North, Range 65 West, Section 7: SE/4SW/4  
Unit Spacing: 01N-65W-Sec 6 SE/4SW/4 SW/4SE/4  
01N-65W-Sec 7 E/2W/2 W/2E/2  
01N-65W-Sec 18 NE/4NW/4 NW/4NE/4  
Weld County, Colorado

Ladies/Gentlemen:

Kerr McGee Oil and Gas Onshore LP (“KMG”) hereby certifies to the Director that KMG owns one-hundred percent (100%) of the mineral rights in the proposed spacing unit. Therefore, KMG respectfully requests the Director to approve the boundary well.

If you have any questions or issues regarding this permit, please contact Cheryl Light at (720) 929-6461.

Very truly yours,

**KERR-McGEE OIL AND GAS ONSHORE LP**

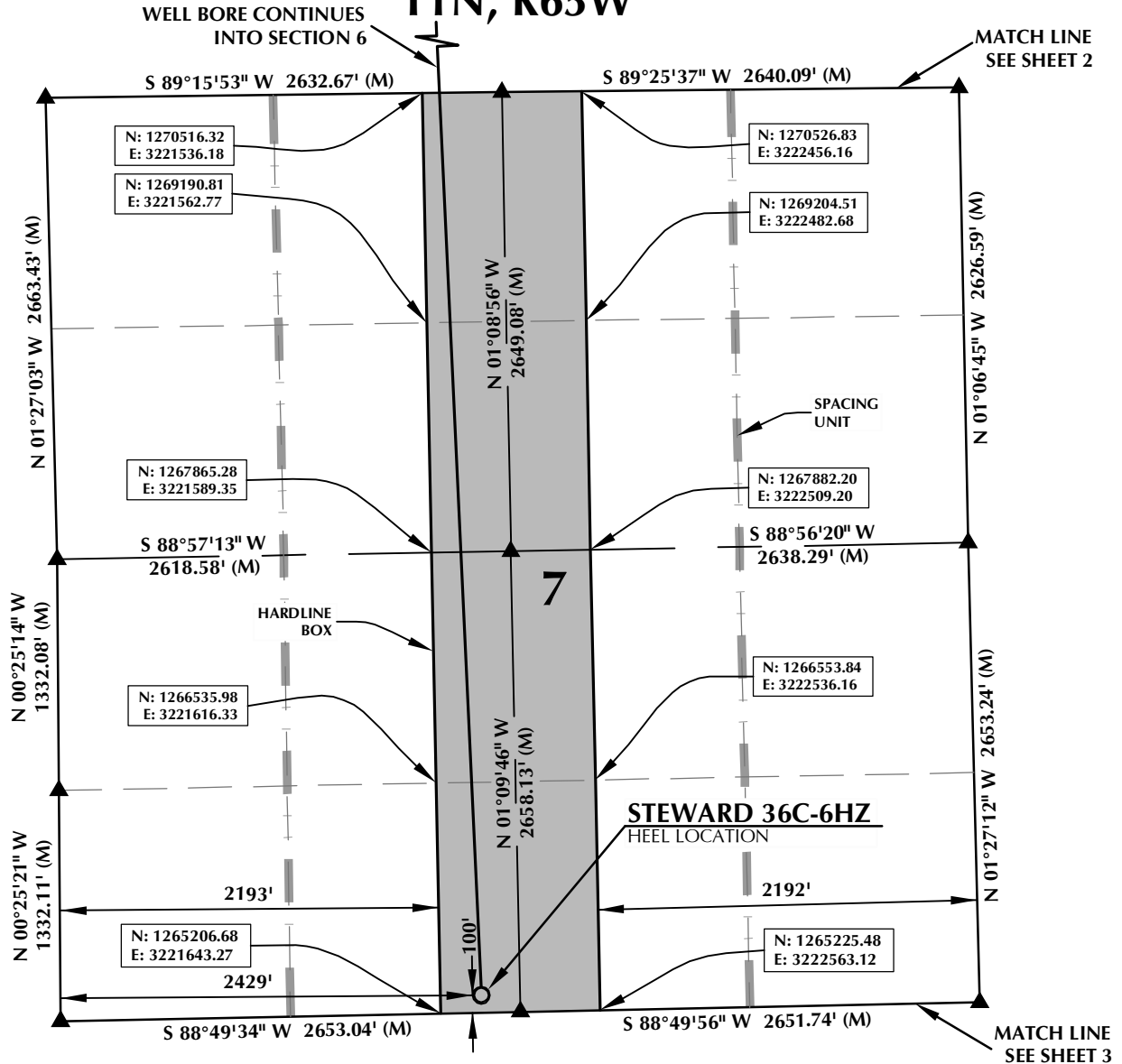
A handwritten signature in blue ink that reads "Cheryl Light".

**Cheryl Light**  
**Senior Regulatory Analyst**

Enclosure

# SPACING UNIT: STEWARD 36C-6HZ

## T1N, R65W



### NOTES:

1. ▲ INDICATES FOUND SECTION CORNER
2. ● INDICATES CALCULATED CORNER
3. BASIS OF BEARING DERIVED FROM COLORADO COORDINATE SYSTEM 1983 NORTH ZONE UNLESS OTHERWISE NOTED.
4. DRAWING NORTHING / EASTING COORDINATES ARE BASED ON COLORADO COORDINATE SYSTEM 1983 NORTH ZONE UNLESS OTHERWISE NOTED.
5. COMBINED SCALE FACTOR: .99972680
6. THIS EXHIBIT DOES NOT REPRESENT A LAND SURVEY PLAT OR IMPROVEMENT SURVEY PLAT AS DEFINED BY C.R.S. 38-51-102 AND CANNOT BE RELIED UPON TO DETERMINE OWNERSHIP.

#### HEEL LOCATION

NAD 83  
N: 1,265,311.52'  
E: 3,221,878.70'

LATITUDE= 40.05894°  
LONGITUDE= -104.707315°

LATITUDE= 40°03'32.210"  
LONGITUDE= -104°42'26.333"

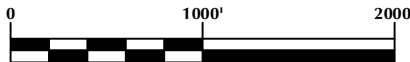
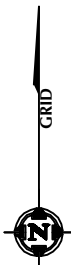
AVAILABLE FOOTAGE  
7027'

#### BOTTOM HOLE LOCATION

NAD 83  
N: 1,270,927.40'  
E: 3,221,616.97'

LATITUDE= 40.074369°  
LONGITUDE= -104.708071°

LATITUDE= 40°04'27.730"  
LONGITUDE= -104°42'29.054"



SCALE: 1" = 1000'

### WELL PAD - STEWARD 35N-6HZ

STEWARD 36C-6HZ  
SPACING UNIT EXHIBIT  
100' FSL & 2429' FWL SESW (HEEL)  
LOCATED IN SECTION 7  
410' FSL & 2255' FWL SESW (BOTTOM)  
LOCATED IN SECTION 6  
T1N, R65W, 6TH P.M.  
WELD COUNTY, COLORADO

**Kerr-McGee Oil &  
Gas Onshore L.P.**  
1099 18th Street  
Denver, Colorado 80202



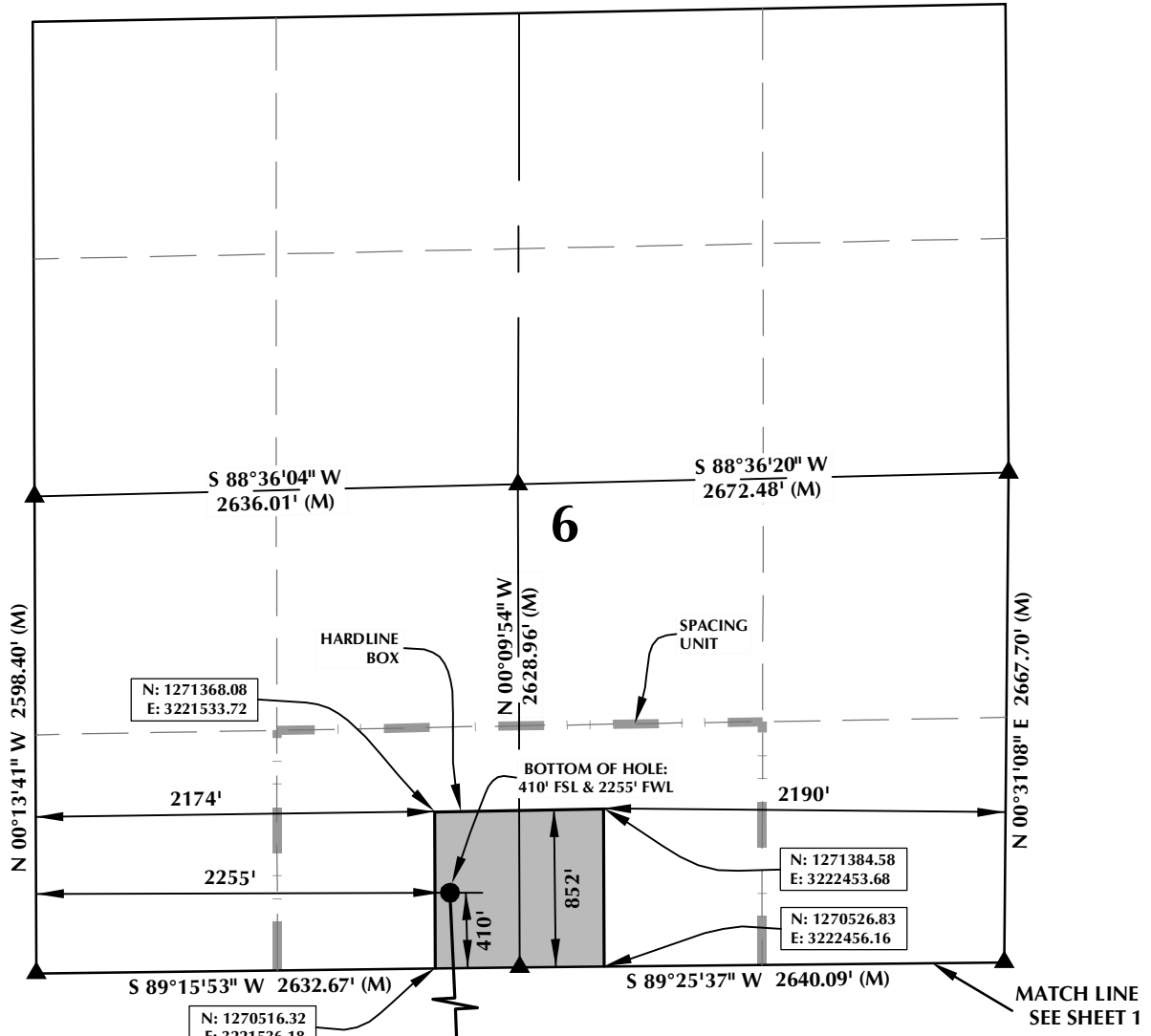
### CONSULTING, LLC

SHERIDAN OFFICE  
2155 North Main Street  
Sheridan, Wyoming 82801  
Phone 307-674-0609

LOVELAND OFFICE  
1635 Foxtrail Drive, Suite 204  
Loveland, Colorado 80538  
Phone 970-776-4331

|               |         |                |         |           |
|---------------|---------|----------------|---------|-----------|
| DRAFTED BY:   | LMO     | CHECKED BY:    | BJR     | SHEET NO: |
| DATE DRAFTED: | 3/25/14 | DATE SURVEYED: | 6/19/12 | 1         |
| REVISED:      | 10/8/14 | FILE NAME:     | 12-59   | 1 OF 3    |

# SPACING UNIT: STEWARD 36C-6HZ T1N, R65W



**HEEL LOCATION**  
NAD 83  
N: 1,265,311.52'  
E: 3,221,878.70'

**BOTTOM HOLE LOCATION**  
NAD 83  
N: 1,270,927.40'  
E: 3,221,616.97'

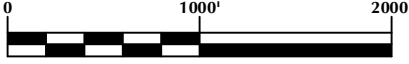
LATITUDE= 40.058947°  
LONGITUDE= -104.707315°

LATITUDE= 40.074369°  
LONGITUDE= -104.708071°

LATITUDE= 40°03'32.210"  
LONGITUDE= -104°42'26.333"

LATITUDE= 40°04'27.730"  
LONGITUDE= -104°42'29.054"

**AVAILABLE FOOTAGE**  
7027'



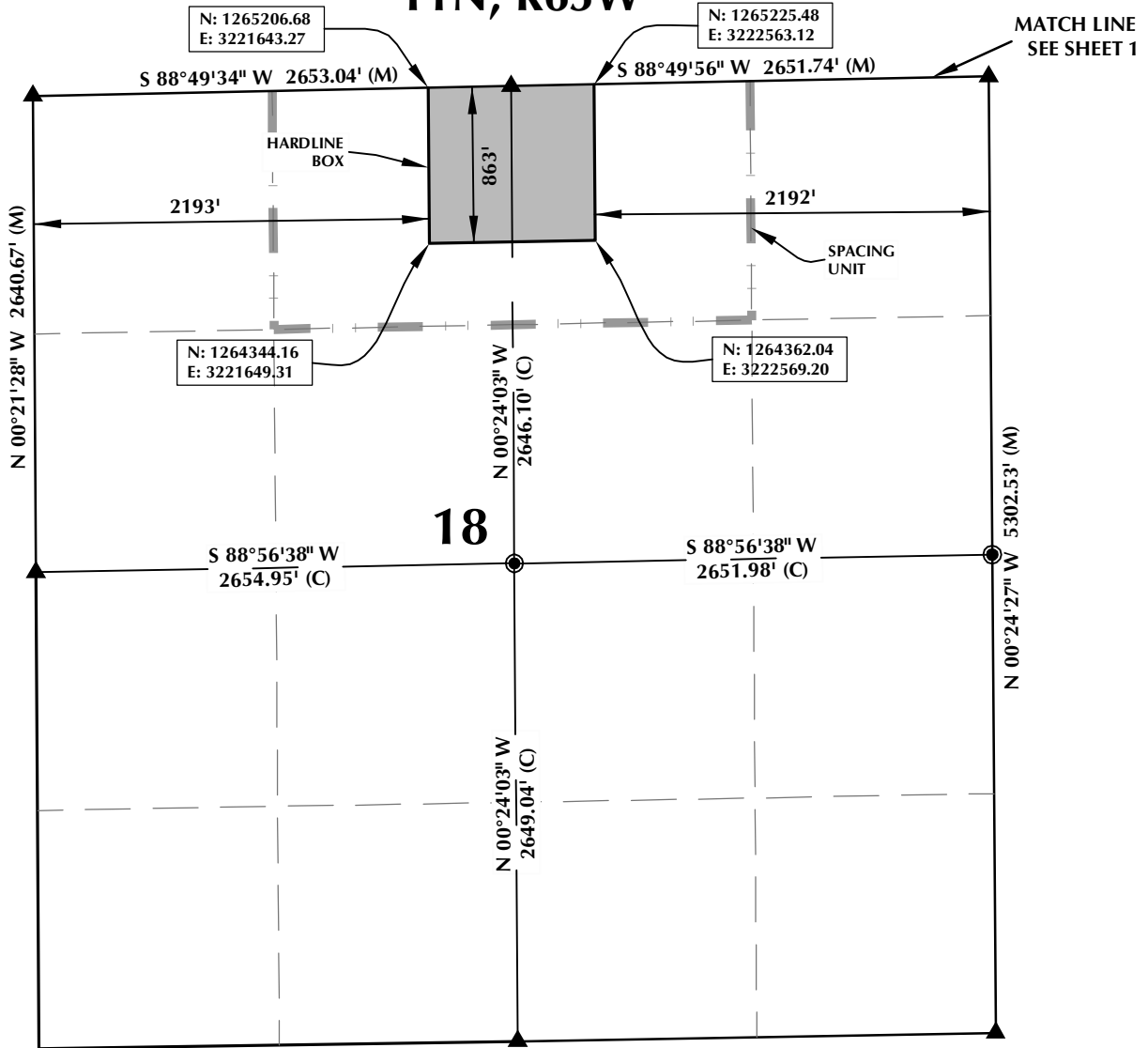
**NOTES:**

1. ▲ INDICATES FOUND SECTION CORNER
2. ● INDICATES CALCULATED CORNER
3. BASIS OF BEARING DERIVED FROM COLORADO COORDINATE SYSTEM 1983 NORTH ZONE UNLESS OTHERWISE NOTED.
4. DRAWING NORTHING / EASTING COORDINATES ARE BASED ON COLORADO COORDINATE SYSTEM 1983 NORTH ZONE UNLESS OTHERWISE NOTED.
5. COMBINED SCALE FACTOR: .99972680
6. THIS EXHIBIT DOES NOT REPRESENT A LAND SURVEY PLAT OR IMPROVEMENT SURVEY PLAT AS DEFINED BY C.R.S. 38-51-102 AND CANNOT BE RELIED UPON TO DETERMINE OWNERSHIP.

K:\ADARKO\2012\2012\_59\_COLORADO\_N\_HZ\PLAT\STEWARD\_35N-6HZ\HARDLINE\STEWARD\_36C-6HZ\_HARDLINE.dwg, 10/8/2014 4:11:45 PM, lgs

|  |  |  |  |   |                 |                 |           |          |                       |                        |            |       |                  |  |  |        |
|--|--|--|--|---|-----------------|-----------------|-----------|----------|-----------------------|------------------------|------------|-------|------------------|--|--|--------|
| <p style="text-align: center;"><b>WELL PAD - STEWARD 35N-6HZ</b></p> <p style="text-align: center;">STEWARD 36C-6HZ<br/>SPACING UNIT EXHIBIT<br/>100' FSL &amp; 2429' FWL SESW (HEEL)<br/>LOCATED IN SECTION 7<br/>410' FSL &amp; 2255' FWL SESW (BOTTOM)<br/>LOCATED IN SECTION 6<br/>T1N, R65W, 6TH P.M.<br/>WELD COUNTY, COLORADO</p> | <p><b>Kerr-McGee Oil &amp;<br/>Gas Onshore L.P.</b></p> <p>1099 18th Street<br/>Denver, Colorado 80202</p> | <div style="text-align: center;"> <p><b>609 CONSULTING, LLC</b></p> </div> <table style="width: 100%; font-size: small;"> <tr> <td style="width: 50%;">SHERIDAN OFFICE<br/>2155 North Main Street<br/>Sheridan, Wyoming 82801<br/>Phone 307-674-0609</td> <td style="width: 50%;">LOVELAND OFFICE<br/>1635 Foxtrail Drive, Suite 204<br/>Loveland, Colorado 80538<br/>Phone 970-776-4331</td> </tr> </table> <table border="1" style="width: 100%; font-size: x-small; margin-top: 5px;"> <tr> <td style="width: 25%;">DRAFTED BY: LMO</td> <td style="width: 25%;">CHECKED BY: BJR</td> <td style="width: 25%;">SHEET NO:</td> <td style="width: 25%; text-align: center;"><b>2</b></td> </tr> <tr> <td>DATE DRAFTED: 3/25/14</td> <td>DATE SURVEYED: 6/19/12</td> <td>FILE NAME:</td> <td>12-59</td> </tr> <tr> <td>REVISED: 10/8/14</td> <td></td> <td></td> <td>2 OF 3</td> </tr> </table> | SHERIDAN OFFICE<br>2155 North Main Street<br>Sheridan, Wyoming 82801<br>Phone 307-674-0609 | LOVELAND OFFICE<br>1635 Foxtrail Drive, Suite 204<br>Loveland, Colorado 80538<br>Phone 970-776-4331 | DRAFTED BY: LMO | CHECKED BY: BJR | SHEET NO: | <b>2</b> | DATE DRAFTED: 3/25/14 | DATE SURVEYED: 6/19/12 | FILE NAME: | 12-59 | REVISED: 10/8/14 |  |  | 2 OF 3 |
| SHERIDAN OFFICE<br>2155 North Main Street<br>Sheridan, Wyoming 82801<br>Phone 307-674-0609   | LOVELAND OFFICE<br>1635 Foxtrail Drive, Suite 204<br>Loveland, Colorado 80538<br>Phone 970-776-4331        |  |  |   |                 |                 |           |          |                       |                        |            |       |                  |  |  |        |
| DRAFTED BY: LMO  | CHECKED BY: BJR  | SHEET NO:  | <b>2</b>   |   |                 |                 |           |          |                       |                        |            |       |                  |  |  |        |
| DATE DRAFTED: 3/25/14  | DATE SURVEYED: 6/19/12   | FILE NAME:   | 12-59  |   |                 |                 |           |          |                       |                        |            |       |                  |  |  |        |
| REVISED: 10/8/14   |  |  | 2 OF 3   |   |                 |                 |           |          |                       |                        |            |       |                  |  |  |        |

# SPACING UNIT: STEWARD 36C-6HZ T1N, R65W



**HEEL LOCATION**  
NAD 83  
N: 1,265,311.52'  
E: 3,221,878.70'

LATITUDE= 40.05894°  
LONGITUDE= -104.707315°

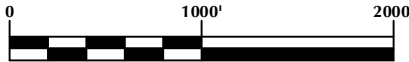
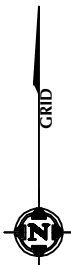
LATITUDE= 40°03'32.210"  
LONGITUDE= -104°42'26.333"

**AVAILABLE FOOTAGE**  
7027'

**BOTTOM HOLE LOCATION**  
NAD 83  
N: 1,270,927.40'  
E: 3,221,616.97'

LATITUDE= 40.074369°  
LONGITUDE= -104.708071°

LATITUDE= 40°04'27.730"  
LONGITUDE= -104°42'29.054"



SCALE: 1" = 1000'

**NOTES:**

- ▲ INDICATES FOUND SECTION CORNER
- INDICATES CALCULATED CORNER
- BASIS OF BEARING DERIVED FROM COLORADO COORDINATE SYSTEM 1983 NORTH ZONE UNLESS OTHERWISE NOTED.
- DRAWING NORTHING / EASTING COORDINATES ARE BASED ON COLORADO COORDINATE SYSTEM 1983 NORTH ZONE UNLESS OTHERWISE NOTED.
- COMBINED SCALE FACTOR: .99972680
- THIS EXHIBIT DOES NOT REPRESENT A LAND SURVEY PLAT OR IMPROVEMENT SURVEY PLAT AS DEFINED BY C.R.S. 38-51-102 AND CANNOT BE RELIED UPON TO DETERMINE OWNERSHIP.

**WELL PAD - STEWARD 35N-6HZ**

STEWARD 36C-6HZ  
SPACING UNIT EXHIBIT  
100' FSL & 2429' FWL SESW (HEEL)  
LOCATED IN SECTION 7  
410' FSL & 2255' FWL SESW (BOTTOM)  
LOCATED IN SECTION 6  
T1N, R65W, 6TH P.M.  
WELD COUNTY, COLORADO

**Kerr-McGee Oil &  
Gas Onshore L.P.**  
1099 18th Street  
Denver, Colorado 80202



**CONSULTING, LLC**

SHERIDAN OFFICE  
2155 North Main Street  
Sheridan, Wyoming 82801  
Phone 307-674-0609

LOVELAND OFFICE  
1635 Foxtrail Drive, Suite 204  
Loveland, Colorado 80538  
Phone 970-776-4331

|               |         |                |         |                                 |
|---------------|---------|----------------|---------|---------------------------------|
| DRAFTED BY:   | LMO     | CHECKED BY:    | BJR     | SHEET NO:<br><b>3</b><br>3 OF 3 |
| DATE DRAFTED: | 3/25/14 | DATE SURVEYED: | 6/19/12 |                                 |
| REVISED:      | 10/8/14 | FILE NAME:     | 12-59   |                                 |