



7535 Hilltop Circle
Denver, CO 80221
www.petro-fs.com

October 17, 2014

Mr. Matt Lepore, Director
Colorado Oil and Gas Conservation Commission
1120 Lincoln Street, Suite 801
Denver, Colorado 80203

**RE: COGCC Rule 318A.e.: Proposed Wellbore Spacing Unit
Matrix M-29HN Well: SESW, Section 29, Township 6 North, Range 65 West
Weld County, Colorado**

Dear Mr. Lepore:

Bayswater Exploration & Production, LLC (Bayswater) is planning to drill the above referenced well in accordance with the provisions set out in COGCC Rule 318A.e. Bayswater's proposed wellbore spacing unit consists of:

W½E½ of Section 29, Township 6 North, Range 65 West
Containing 160 acres more or less

Bayswater is not the only owner within the proposed wellbore spacing unit and has provided notice to the remaining owners within this spacing unit, as required by COGCC Rule 318A.e.(6). Copies of the required notification letters are on file at Bayswater's office. The required thirty (30) day notice period has elapsed absent the receipt by Bayswater of any objection to their proposal by the owners within the proposed spacing unit for the subject well.

Enclosed is the Proposed Spacing Unit Plat to assist in your review and approval of Bayswater's proposed Application for Permit to Drill (APD) for the Matrix M-29HN well. Many thanks for your attention to this matter.

Respectfully,

Jeff Annable
Regulatory Technician
Agent for Bayswater Exploration & Production, LLC

:ja

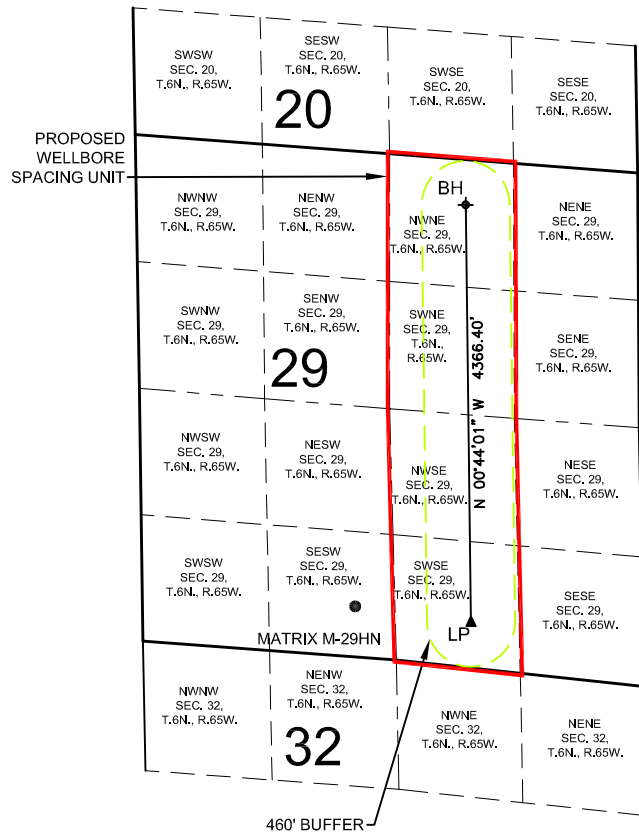
Enclosure: Proposed Spacing Unit Plat

We are what we repeatedly do. Excellence, then, is not an act, but a habit.

-Aristotle

PROPOSED 318A.e. SPACING UNIT

SECTION 29 TOWNSHIP 6 NORTH, RANGE 65 WEST, 6TH P.M.



WELL **MATRIX M-29HN** TO BE LOCATED 528' FSL AND 2224' FWL, SEC. 29, T6N, R65W

SURFACE LOCATION

NAD83
 LATITUDE= 40.452899°
 LONGITUDE= 104.688725°

LANDING POINT LOCATION

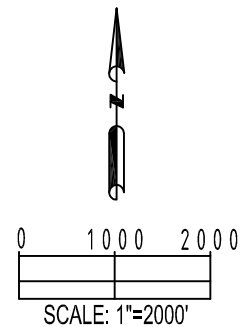
NAD83
 LATITUDE= 40.452396°
 LONGITUDE= 104.684385°

BOTTOM HOLE LOCATION

NAD83
 LATITUDE= 40.464382°
 LONGITUDE= 104.684442°

LEGEND

- = PROPOSED WELL
- ▲ = LANDING POINT
- ✦ = BOTTOM HOLE
- LP = LANDING POINT
- BH = BOTTOM HOLE



| | | |
|--------------------------------------------------------------------------------------------------------|---------------------------|----------------------------------------------------------------------------------------------|
| PREPARED BY: PFS Petroleum Field Services, LLC 7535 Hilltop Circle Denver, CO 80221 | FIELD DATE: 07-10-14 | SURFACE LOCATION: SE 1/4 SW 1/4, SEC. 29, T6N, R65W, 6TH P.M. WELD COUNTY, COLORADO |
| | DRAWING DATE: 10-03-14 | |
| BY: KAD | CHECKED: TJR | |