

## Kaleb Roush

**From:** Diana Burn - DNR <diana.burn@state.co.us>  
**Sent:** Monday, October 20, 2014 8:07 AM  
**To:** Dustin Dyk  
**Cc:** Kaleb Roush; Penny Garrison - DNR; Mike Hickey - DNR; Barbara Westerdale - DNR  
**Subject:** RE: Nelson Farms 4 123-40004

[123-40004](#) Please proceed as proposed. APD should be received today.

Thanks,  
Diana

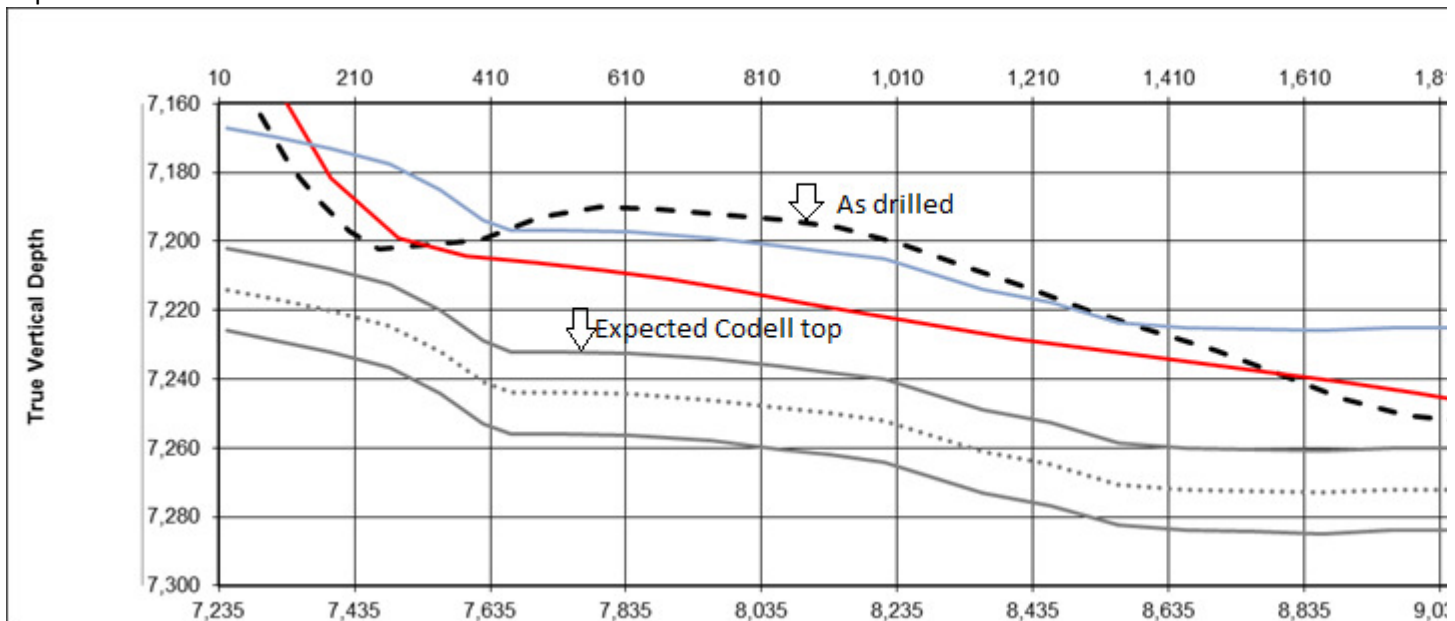
---

**From:** Dustin Dyk [mailto:[DDyk@ExtractionOG.com](mailto:DDyk@ExtractionOG.com)]  
**Sent:** Monday, October 20, 2014 7:42 AM  
**To:** Diana Burn - DNR  
**Cc:** Kaleb Roush  
**Subject:** Nelson Farms 4

Diana-

We are having an issue on the Nelson Farms 4 (API# - 05-123-4004-00). We drilled our curve and set 7" casing. The build rates at the end of the curve were significantly greater than expected, resulting in an inclination of 95 degrees.

This well was planned as a codell. With the combination of higher than expected build rates and a strong down-dipping formation structure, we have not been able to get into the Codell yet. We have drilled to 10,419'. Here is a visual explanation of what we have seen so far:



We have spent too much time out of zone and need to sidetrack.

I would like to open hole sidetrack, if the State will allow it. Tentatively, I am planning to open hole sidetrack about 100' out of the shoe. We will cement this liner after sidetrack is complete and drilled to TD.

Total MD drilled to: 10,419'  
Surface casing – 9 5/8" 36# set at 797'.  
Intermediate casing – 7" 26# set at 7513'.  
No fish in hole  
No plug planned  
Proposed sidetrack point – 7600'  
Objective formation of sidetrack: Codell  
Proposed BHL: 564 FNL 2555 FWL Sec 27, T7N, R67W (Same as original APD).

I will you to discuss shortly after 8 AM.

Thanks

**Dustin Dyk**  
*Drilling Manager*  
Extraction Oil & Gas  
1888 Sherman St, Ste 200  
Denver, CO 80203  
Cell: 720-670-6073  
[www.ExtractionOG.com](http://www.ExtractionOG.com)



---

Total Control Panel

[Login](#)

To: [kroush@extractionog.com](mailto:kroush@extractionog.com)

Message Score: 1

High (60): **Pass**

From: [diana.burn@state.co.us](mailto:diana.burn@state.co.us)

My Spam Blocking Level: Medium

Medium (75): **Pass**

Low (90): **Pass**

[Block](#) this sender

[Block](#) state.co.us

*This message was delivered because the content filter score did not exceed your filter level.*