



Kerr-McGee Oil & Gas Onshore LP

A subsidiary of Anadarko Petroleum Corporation

1099 18th Street
Denver, CO 80202
720-929-6000

October 17, 2014

Department of Natural Resources
Oil and Gas Conservation Commission
The Chancery Building
1120 Lincoln St., Suite 801
Denver, CO 80203

Re: **30 Day Certification Letter - 318A.e**
GREENLEAF 3N-2HZ
Township 2 North, Range 65 West, Section 2: SE/4SW/4
Unit Spacing: 02N-65W-02 W/2E/2, E/2W/2
02N-65W-11 NW/4NE/4, NE/4NW/4
Weld County, Colorado

Ladies/Gentlemen:

Kerr-McGee Oil and Gas Onshore LP ("KMG") hereby certifies to the Director that a thirty (30) day notice has been given by certified mail to all owners in the proposed wellbore spacing unit. We have not received any objections to such well location, proposed spacing unit, or additional producing formation. KMG hereby requests the Director to approve the boundary well.

If you have any questions or issues regarding this permit, please contact Cheryl Light at (720) 929-6461.

Very truly yours,

Kerr-McGee Oil and Gas Onshore LP

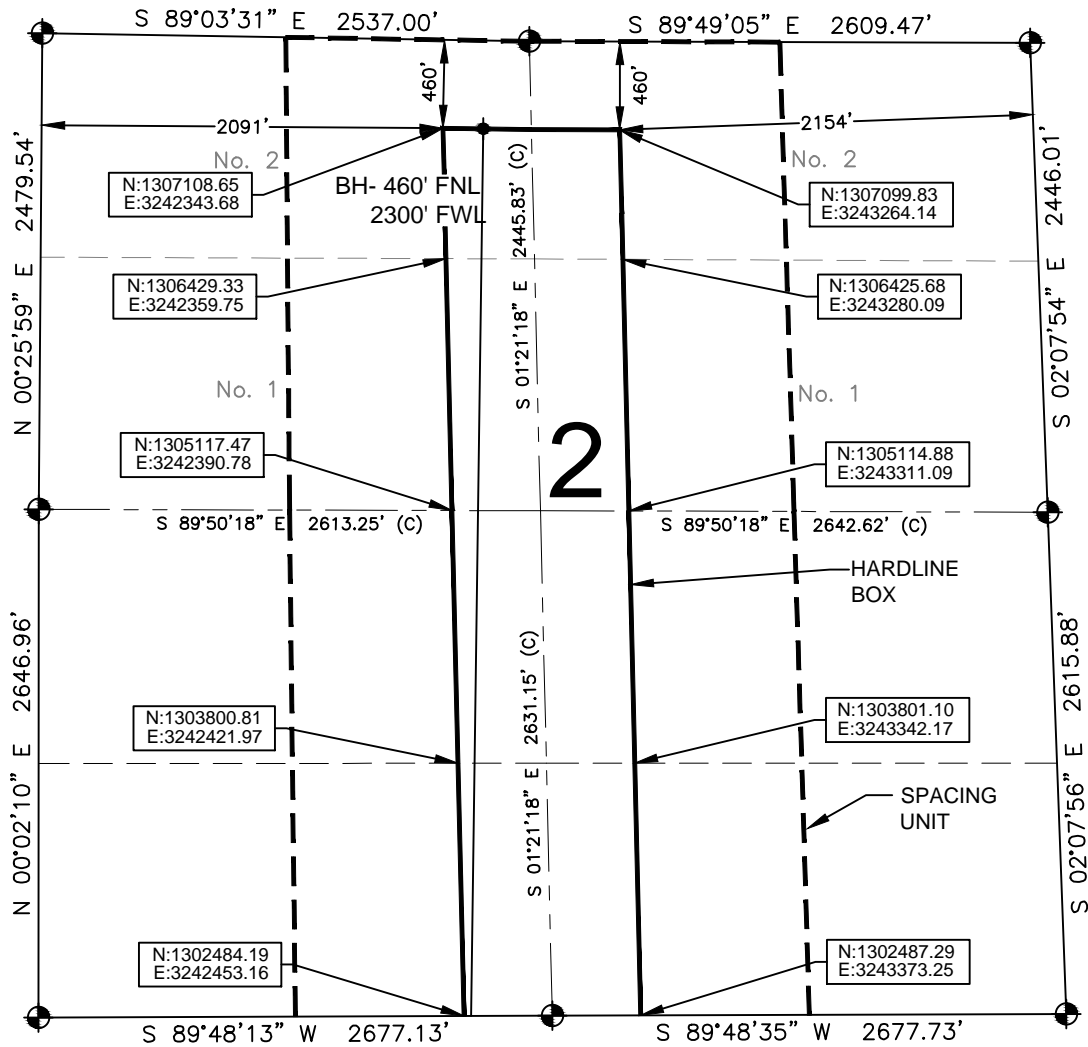
A handwritten signature in black ink, appearing to read 'Mike McConaughy'.

Mike McConaughy
Sr. Regulatory Analyst

Enclosure

HARDLINE EXHIBIT: GREENLEAF 3N-2HZ

SECTION 2, TOWNSHIP 2 NORTH, RANGE 65 WEST, 6TH P.M.



LEGEND

- = EXISTING MONUMENT
- = PROPOSED HEEL
- = CALCULATED POSITION
- ◆ = BOTTOM HOLE
- BH = BOTTOM HOLE

HEEL LOCATION

NAD83
 LATITUDE= 40.159223°
 LONGITUDE= 104.632424°
 LATITUDE= 40°09'33.202"
 LONGITUDE= 104°37'56.726"

BOTTOM HOLE LOCATION

NAD83
 LATITUDE= 40.173141°
 LONGITUDE= 104.631998°
 LATITUDE= 40°10'23.306"
 LONGITUDE= 104°37'55.191"

QRT/QRT SECTIONS WITHIN PATH OF THE HARDLINE

SESW, SEC. 2
 NESW, SEC. 2
 SWSE, SEC. 2
 NWSE, SEC. 2
 E 1/2 LOT 1, NW 1/4 SEC. 2
 E 1/2 LOT 2, NW 1/4 SEC. 2
 W 1/2 LOT 1, NE 1/4 SEC. 2
 W 1/2 LOT 2, NE 1/4 SEC. 2

AVAILABLE FOOTAGE

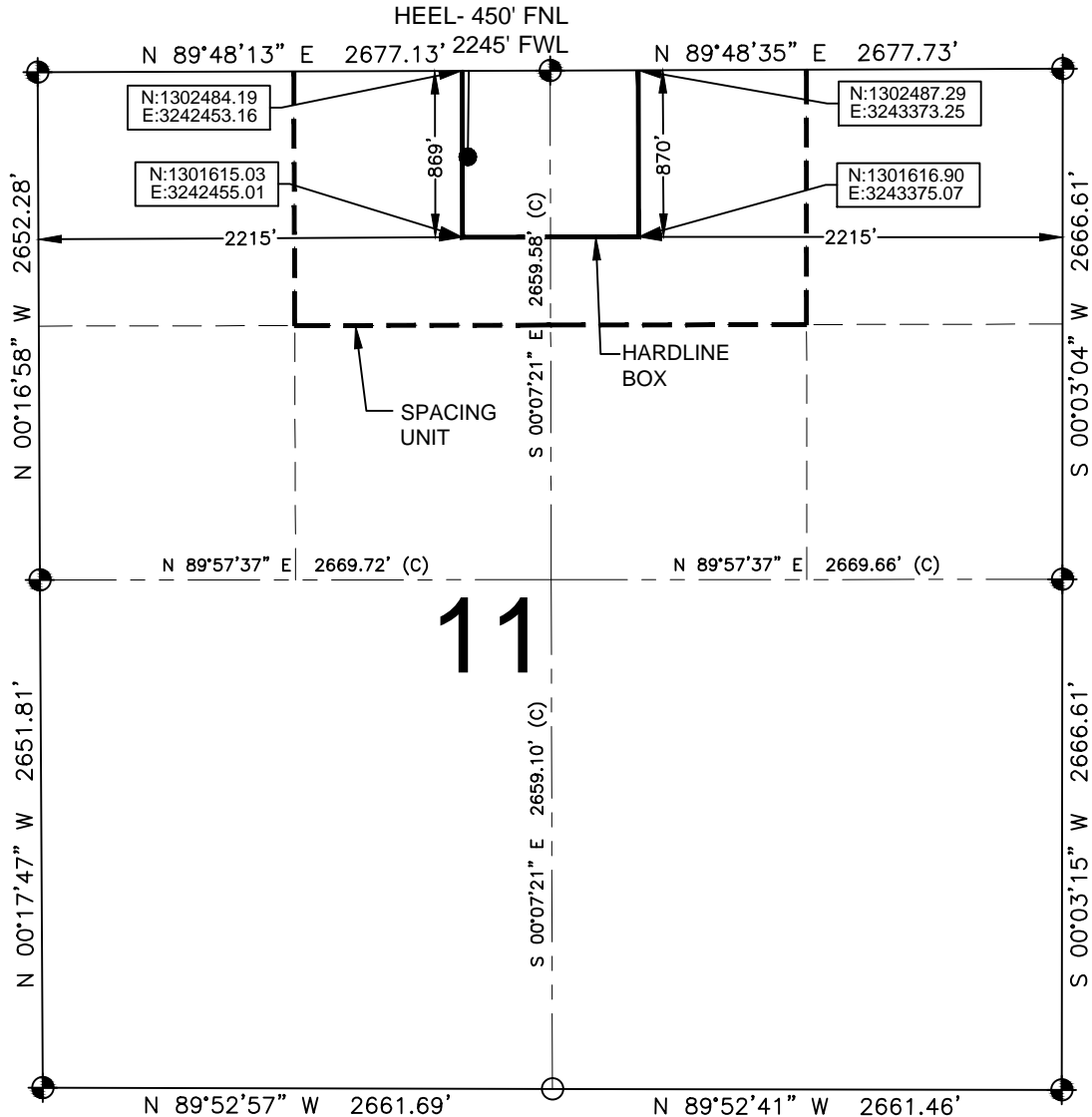
5484'

NOTES:

- THIS DOCUMENT IS NOT A LAND SURVEY PLAT OR IMPROVEMENT SURVEY PLAT. THIS DOCUMENT DOES NOT REFLECT A FIELD SURVEY. SECTION BREAKDOWN, MONUMENTATION AND HORIZONTAL POSITIONS SHOWN ARE BASED ON THE HEEL AND BOTTOM HOLE LOCATION PROVIDED BY ANADARKO PETROLEUM CORPORATION

HARDLINE EXHIBIT: GREENLEAF 3N-2HZ

SECTION 11, TOWNSHIP 2 NORTH, RANGE 65 WEST, 6TH P.M.



LEGEND

- = EXISTING MONUMENT ● = BOTTOM HOLE
● = PROPOSED HEEL BH = BOTTOM HOLE
○ = CALCULATED POSITION

QRT/QRT SECTIONS WITHIN PATH OF THE HARDLINE

NENW, SEC. 11

NWNE, SEC. 11

NOTES:

1. THIS DOCUMENT IS NOT A LAND SURVEY PLAT OR IMPROVEMENT SURVEY PLAT. THIS DOCUMENT DOES NOT REFLECT A FIELD SURVEY. SECTION BREAKDOWN, MONUMENTATION AND HORIZONTAL POSITIONS SHOWN ARE BASED ON THE HEEL AND BOTTOM HOLE LOCATION PROVIDED BY ANADARKO PETROLEUM CORPORATION