

Field Ticket Number: 0901539952	Field Ticket Date: Tuesday, July 29, 2014	Planning Order #: NA
Bill To: NOBLE ENERGY INC E-BUSINESS, DONOTMAIL-1001 NOBLE ENERGY WAY, HOUSTON, TX, 77070	Job Name: Ann Fill Order Type: ZOH Well Name: Little Will #2 Company Code: 1100 Customer PO No.: Na Shipping Point: FORT LUPTON Shipping Point Sales Office: ROCKY MOUNTAINS BD Well Type: GAS Well Category: DEVELOPMENT Rig Name/ #: ENSIGN 304	
Ship To: LITTLE WILL #2, WELD, S25 T6N R65W, GREELEY, CO, 80631		

Material	Description	QTY	UOM	Unit Amount	Gross Amount	Discount	Net Amount
14099	CMT RECEMENT BOM	1	JOB				0.00
	Cement Services & Equipment						
2	MILEAGE FOR CEMENTING CREW	76	MI				6.10
	Number of Units	1					
1	ZI-MILEAGE FROM NEAREST HES BASE,/UNIT	76	MI				6.62
	Number of Units	1					
16091	ZI - PUMPING CHARGE	1	EA				0.68
	DEPTH	700					
	FEET/METERS (FT/M)	FT					
139	ADC (AUTO DENSITY CTRL) SYS, /JOB,ZI	1	JOB				0.00
	NUMBER OF UNITS	1					
	NUMBER OF JOBS	1					
	ENTER FEET/METER/JOB/DAY	JOB					
130104	PORT. DATA ACQUIS. WO/PTICEM RT W/HES	1	EA				0.60
	DAYS OR PARTIAL DAY(WHOLE NO.)	1					
114	R/A DENSOMETER W/CHART RECORDER,/JOB,ZI	1	JOB				0.00
	NUMBER OF UNITS	1					
14743	TUBING/ROTARY SUB RNTL,2.38",1ST DAY, ZI	1	EA				0.10
	HR/DAY/WEEK/MTH/YEAR/JOB/RUN	DAY					
	DAYS OR FRACTION (MIN1)	1					
	Cement Surcharges						
7	ENVIRONMENTAL CHARGE,/JOB,ZI	1	JOB				0.00
8	IRON SAFETY INSPECTION SURCHARGE /JOB ZI	1	JOB				0.00
86954	ZI FUEL SURCHG-CARS/PICKUPS<1 1/2TON	76	MI				2.92
	Number of Units	1					
86955	ZI FUEL SURCHG-HEAVY TRKS >1 1/2 TON	76	MI				0.76
	Number of Units	1					
87605	FUEL SURCHG-CMT & CMT ADDITIVES	38	MI				0.45
	NUMBER OF TONS	18.8					
372867	Cmt PSL - DOT Vehicle Charge, CMT	2	EA				0.00
	Cement Materials						
76400	MILEAGE,CMT MTLs DEL/RET MIN	38	MI				0.30
	NUMBER OF TONS	18.8					
3985	HANDLE&DUMP SVC CHRg, CMT&ADDITIVES,ZI	400	CF				0.40
	Unit of Measurement	EA					
	NUMBER OF EACH	1					
452986	CMT, HalCem (TM) system	400	SK				0.60
100008028	CHEM, SUGAR,GRANULATED, 50LB BAG	100	LB				0.40

The Road to Excellence Starts with Safety

Sold To #: 345242	Ship To #: 3557833	Quote #:	Sales Order #: 0901539952
Customer: NOBLE ENERGY INC E-BUSINESS		Customer Rep: Chris Hohnstein	
Well Name: Little Will	Well #: #2	API/UWI #: 05-123-11419	
Field:	City (SAP): GREELEY	County/Parish: WELD	State: COLORADO
Legal Description:			
Contractor: ENSIGN DRLG		Rig/Platform Name/Num: ENSIGN 304	
Job BOM: 14099			
Well Type: GAS			
Sales Person: HALAMERICA\HX46524		Srvc Supervisor: Andrew Ashby	

Job

Formation Name			
Formation Depth (MD)	Top		Bottom
Form Type			BHST
Job depth MD	ft		Job Depth TVD
Water Depth			Wk Ht Above Floor
Perforation Depth (MD)	From		To

Well Data

Description	New / Used	Size in	ID in	Weight lbm/ft	Thread	Grade	Top MD ft	Bottom MD ft	Top TVD ft	Bottom TVD ft
Tubing		1.25	0.824	2.4			0	700	0	700
Open Hole Section			12.25				0	700	0	0
Casing		4.5	4	11.6			0	3600	0	3600

Tools and Accessories

Type	Size in	Qty	Make	Depth ft		Type	Size in	Qty	Make
Guide Shoe	4.5					Top Plug	4.5		
Float Shoe	4.5					Bottom Plug	4.5		
Float Collar	4.5					SSR plug set	4.5		
Insert Float	4.5					Plug Container	4.5		
Stage Tool	4.5					Centralizers	4.5		

Miscellaneous Materials

Gelling Agt		Conc		Surfactant		Conc		Acid Type		Qty		Conc	
Treatment Fld		Conc		Inhibitor		Conc		Sand Type		Size		Qty	

Fluid Data

Stage/Plug #: 1

Fluid #	Stage Type	Fluid Name	Qty	Qty UoM	Mixing Density lbm/gal	Yield ft ³ /sack	Mix Fluid Gal	Rate bbl/min	Total Mix Fluid Gal
1	Water	Water	10	bbl	8.3				

Fluid #	Stage Type	Fluid Name	Qty	Qty UoM	Mixing Density lbm/gal	Yield ft ³ /sack	Mix Fluid Gal	Rate bbl/min	Total Mix Fluid Gal
2	HalCem	HALCEM (TM) SYSTEM	400	sack	15.8	1.15		4	4.99

1.7 Job Event Log

Type	Seq. No.	Activity	Graph Label	Date	Time	Source	Pressure (psi)	Density (ppg)	Rate (bbl/min)	Comment
Event	1	Call Out	Call Out	7/29/2014	03:00:00	USER				Crew called out for job.
Event	2	Pre-Convoy Safety Meeting	Pre-Convoy Safety Meeting	7/29/2014	06:00:00	USER				Met w/crew to discuss directions to location.
Event	3	Depart from Service Center or Other Site	Depart from Service Center or Other Site	7/29/2014	06:15:00	USER				Gate check and leave yard.
Event	4	Arrive at Location from Service Center	Arrive at Location from Service Center	7/29/2014	07:15:00	USER				End Journey
Event	5	Assessment Of Location Safety Meeting	Assessment Of Location Safety Meeting	7/29/2014	07:20:00	USER				Walked location to figure out the best layout, and what hazards are present.
Event	6	Pre-Rig Up Safety Meeting	Pre-Rig Up Safety Meeting	7/29/2014	07:30:00	USER				Met w/crew to discuss rig up.
Event	7	Rig-Up Equipment	Rig-Up Equipment	7/29/2014	07:35:00	USER				Rig everything up, including the rig floor.
Event	8	Pre-Job Safety Meeting	Pre-Job Safety Meeting	7/29/2014	08:45:00	USER	-130.00	8.29	0.00	Met w/crew, Co. Rep. rig crew, & water haulers to discuss job procedure and hazards involved.
Event	9	Start Job	Start Job	7/29/2014	08:58:24	COM13	-129.00	8.24	0.00	
Event	10	Other	Fill Lines	7/29/2014	08:58:37	COM13	-129.00	8.22	0.00	2 bbls water to fill lines.
Event	11	Test Lines	Start Pressure Test	7/29/2014	09:08:58	COM13	3411.00	8.42	0.00	Test pump & lines to 3000 psi.
Event	12	Test Lines	End Pressure Test	7/29/2014	09:11:39	USER	3211.00	8.38	0.00	Test good - lost 200 psi in 3 min.
Event	13	Pump Spacer 1	Pump Water	7/29/2014	09:13:13	COM13	161.00	13.33	1.90	10 bbls water spacer
Event	14	Pump Cement	Pump Cement	7/29/2014	09:20:13	COM13	324.00	14.07	1.90	Cement scaled @ 15.8 ppg, 400 sks HalCem @ 15.8 lbm/gal, 1.15 cuft/sk, 4.99 gal/sk.
Event	15	Shutdown	Shutdown	7/29/2014	09:56:00	COM13	100.00	16.25	0.00	75 bbls away - Getting good cement to surface
Event	16	End Job	End Job	7/29/2014	10:00:00	USER	-30.00	16.07	0.00	Job Complete.
Event	17	Post-Job Safety	Post-Job Safety Meeting	7/29/2014	10:01:00	USER	-36.00	16.02	0.00	Met w/crew to discuss

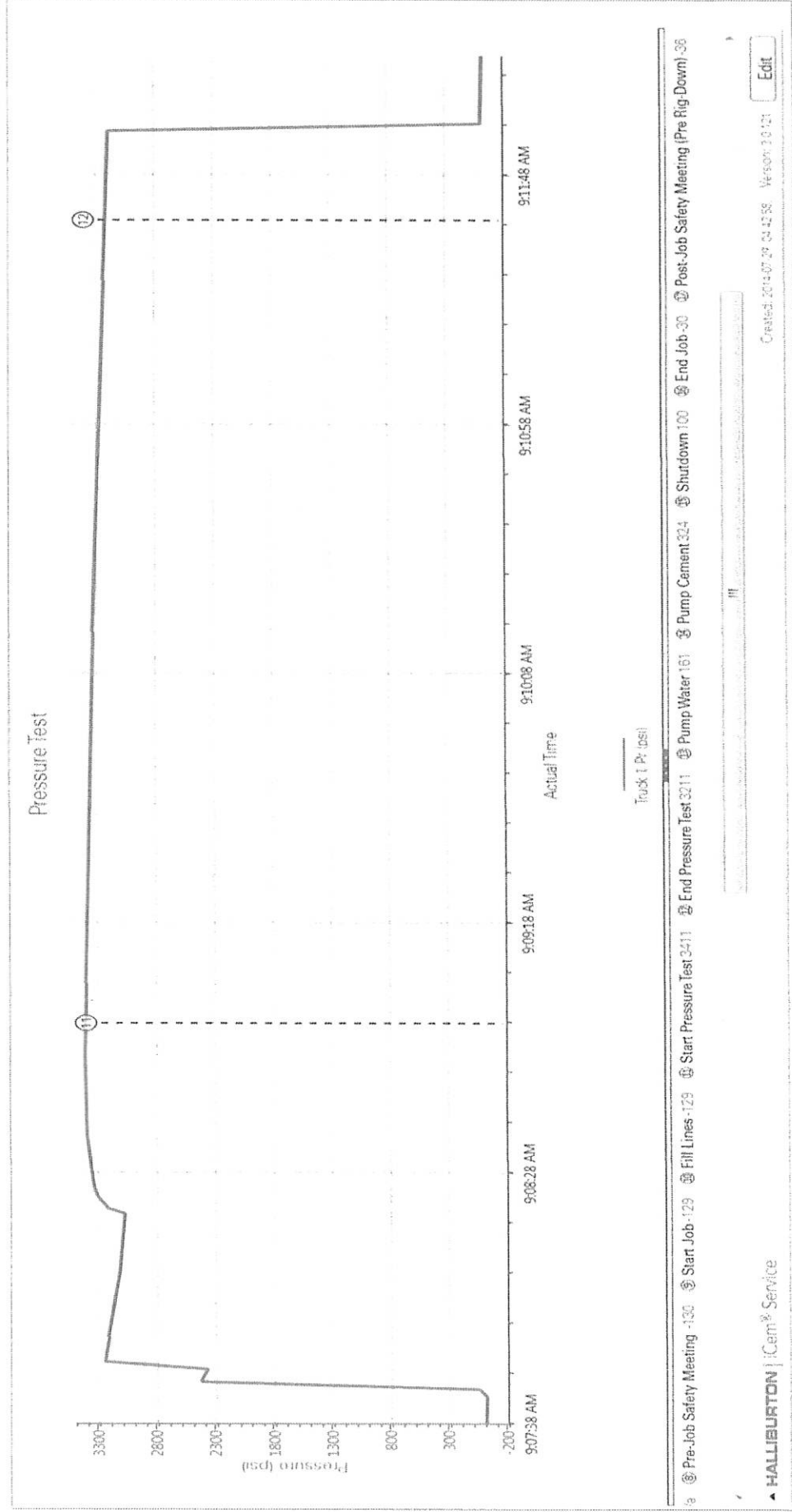
iCem[®] Service

Created: Tuesday, July 29, 2014

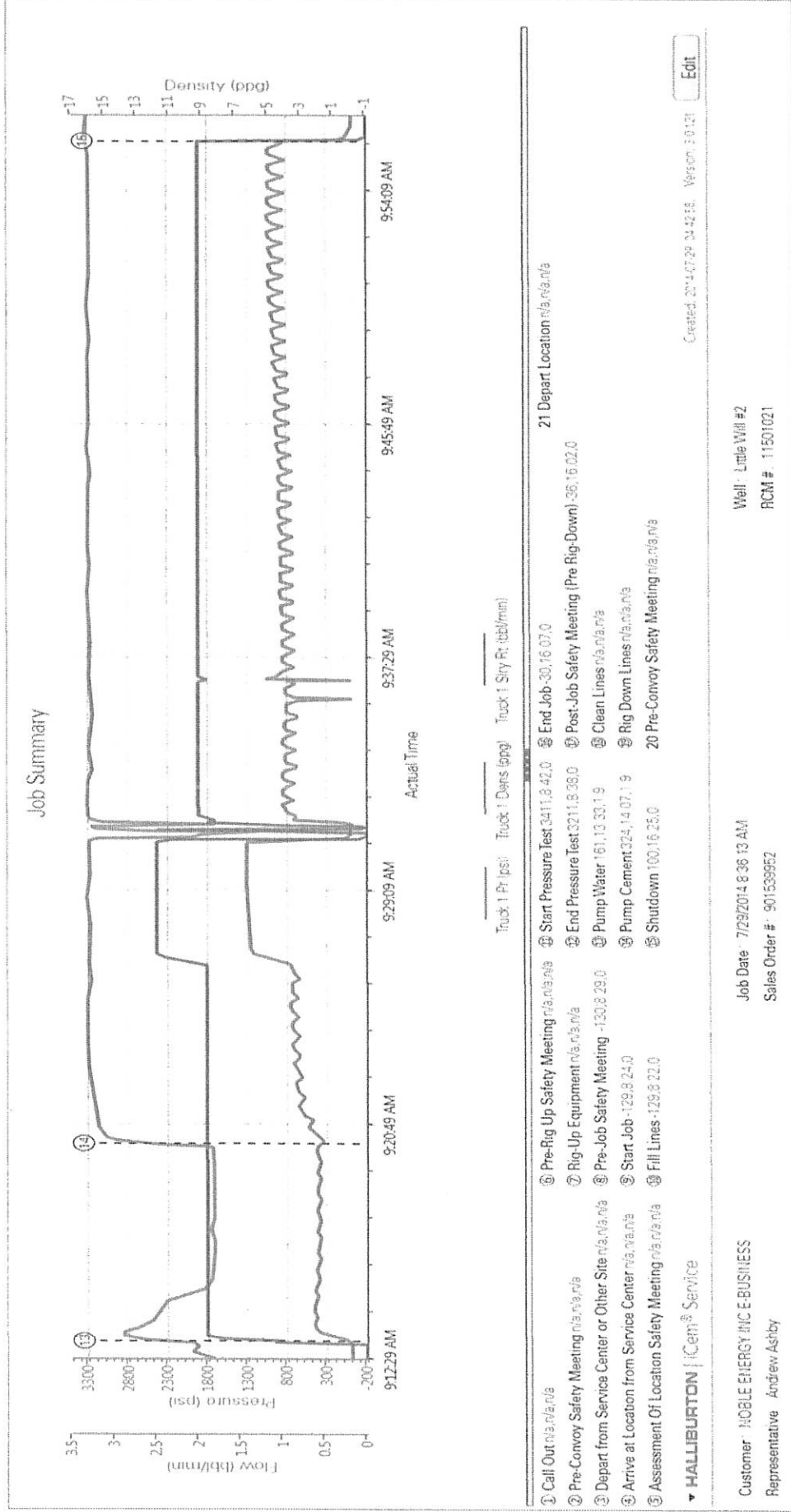
		Meeting (Pre Rig-Down)		(Pre Rig-Down)															
Event	18	Clean Lines	Clean Lines	7/29/2014	10:10:12	USER	-30.00	16.28	1.20									wash-up and rig-down.	
Event	19	Rig Down Lines	Rig Down Lines	7/29/2014	10:45:00	USER											Clean up RCM.		
Event	20	Pre-Convoy Safety Meeting	Pre-Convoy Safety Meeting	7/29/2014	11:25:00	USER											Rig everything down.		
Event	21	Depart Location	Depart Location	7/29/2014	11:30:00	USER											Met w/crew to discuss Journey home.		
																		Thanks for using Halliburton!!!	

2.0 Attachments

2.1 Noble - Little Will# 2 - Ann Fill-Pressure Test.png



2.2 Noble - Little Will# 2 - Ann Fill-Job Summary.png



2.3 Noble - Little Will# 2 - Ann Fill-Job Summary NE.png

