

OPERATOR: **WPX ENERGY**

WELL NAME: RWF 533-25

FIELD NAME: RULISON

DRILLING RIG: NABORS 577

API #: 05-045-21993

LOCATION: SEC. 25 T 6S R 94W

SURFACE HOLE: 1154' FSL , 1391' FEL

BOTTOM HOLE: 1455' FSL , 1679' FEL

SCALE: 1"=100'



533 Bogart Lane, Unit A
Grand Junction, CO 81505
Office (970) 424-5162

RWF 533-25

COUNTY: GARFIELD

STATE: COLORADO

DRILLING FLUID: LSND

LOGGER: LUKE DAVENPORT

GROUND ELEVATION: 6234'

KELLY BUSHING: 6260'

TVD VS. MD = -18'

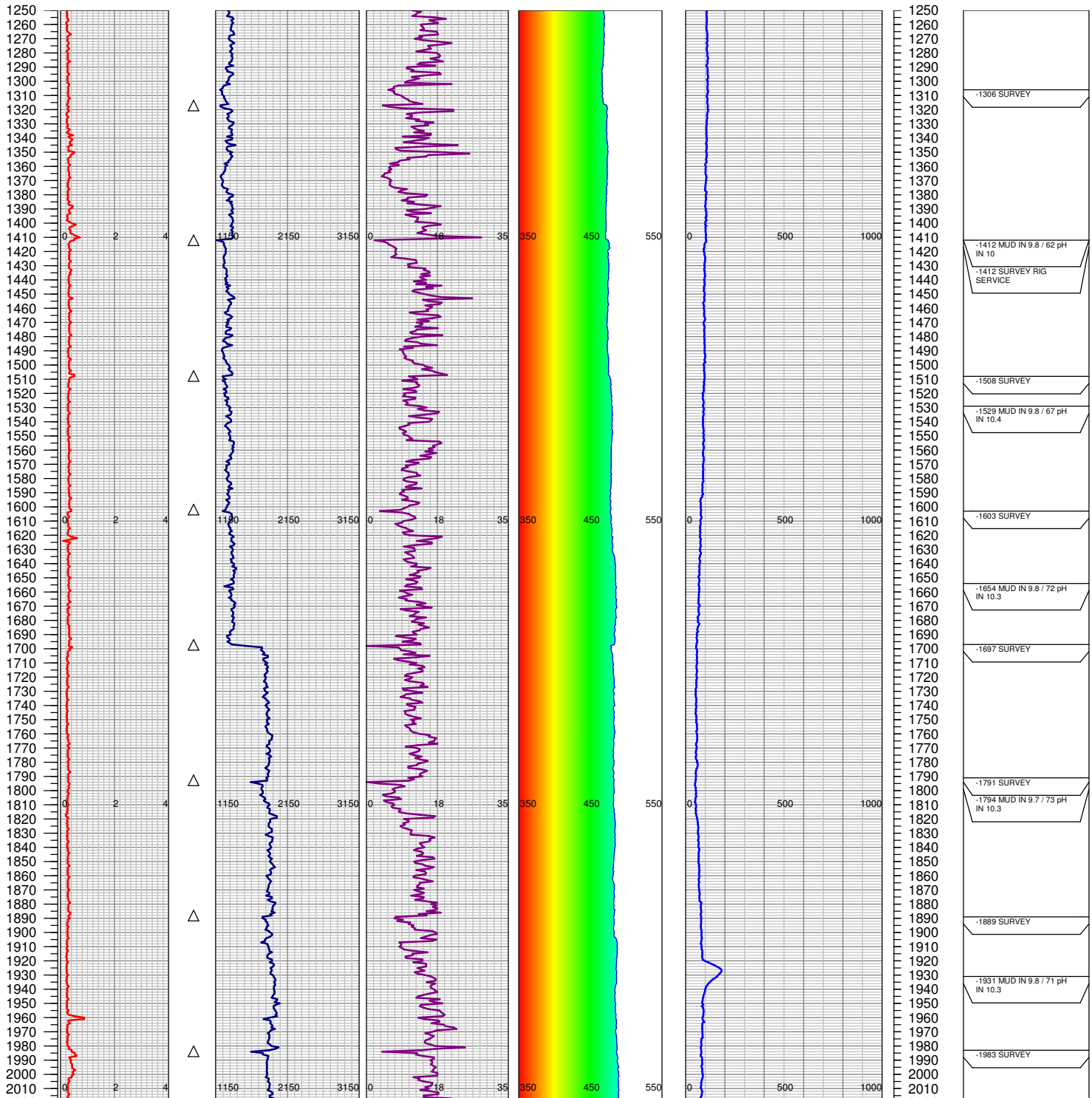
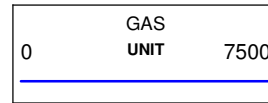
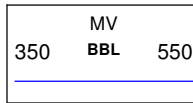
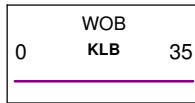
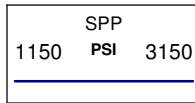
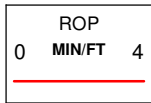
DEPTHS LOGGED: 1250'-8814'

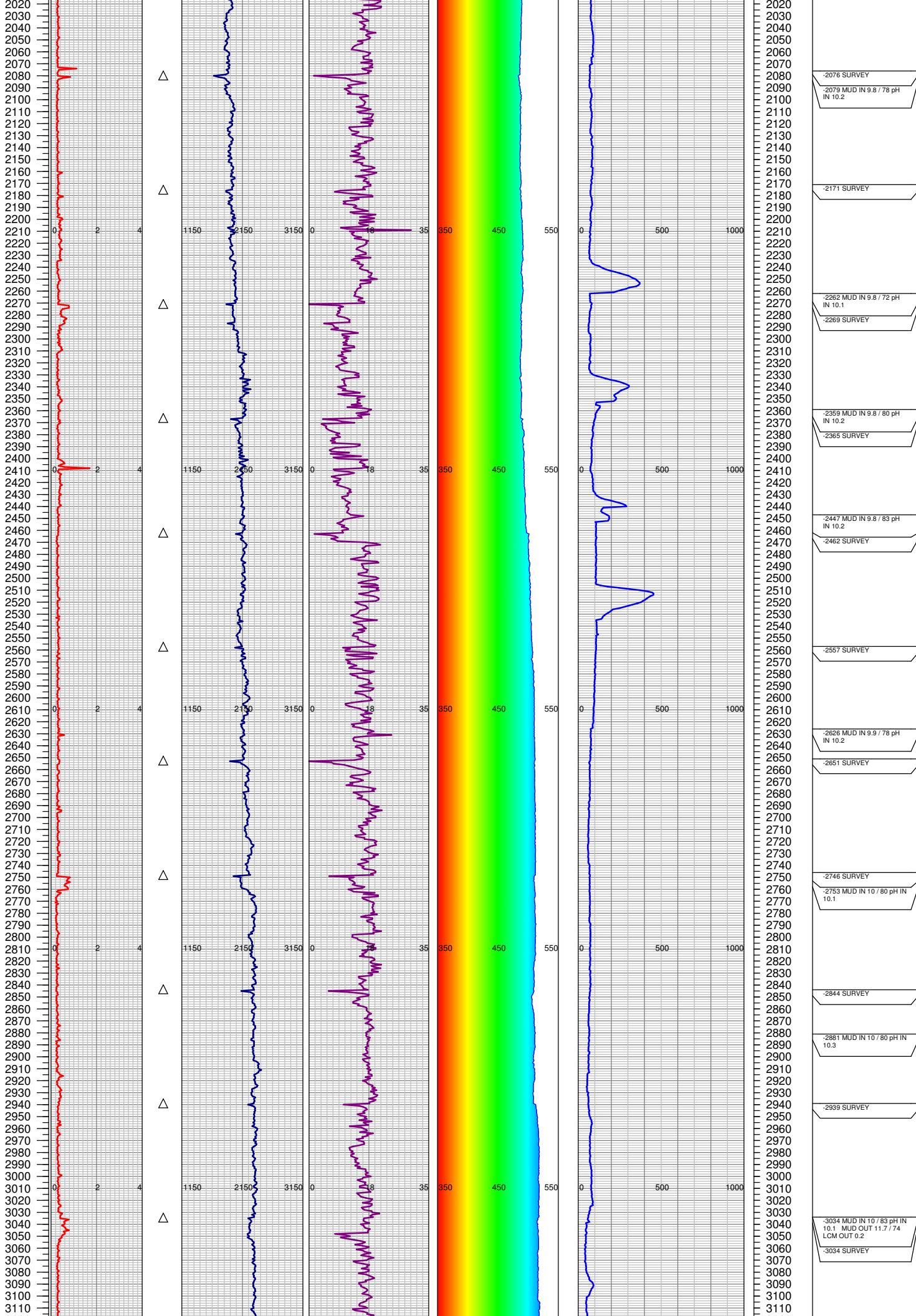
SPUD DATE: 7/25/2014

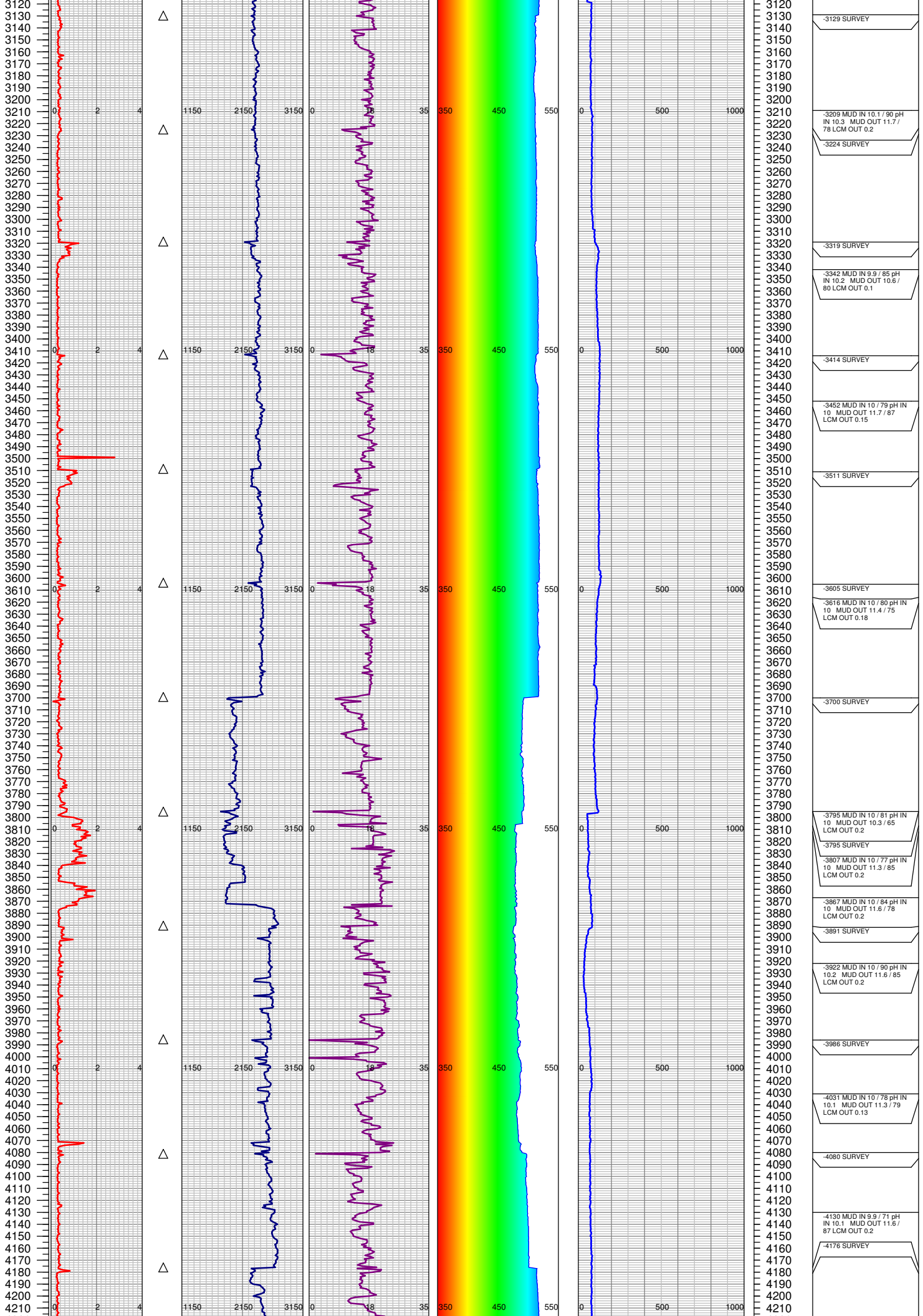
FGS BEGIN LOGGING: 7/27/2014

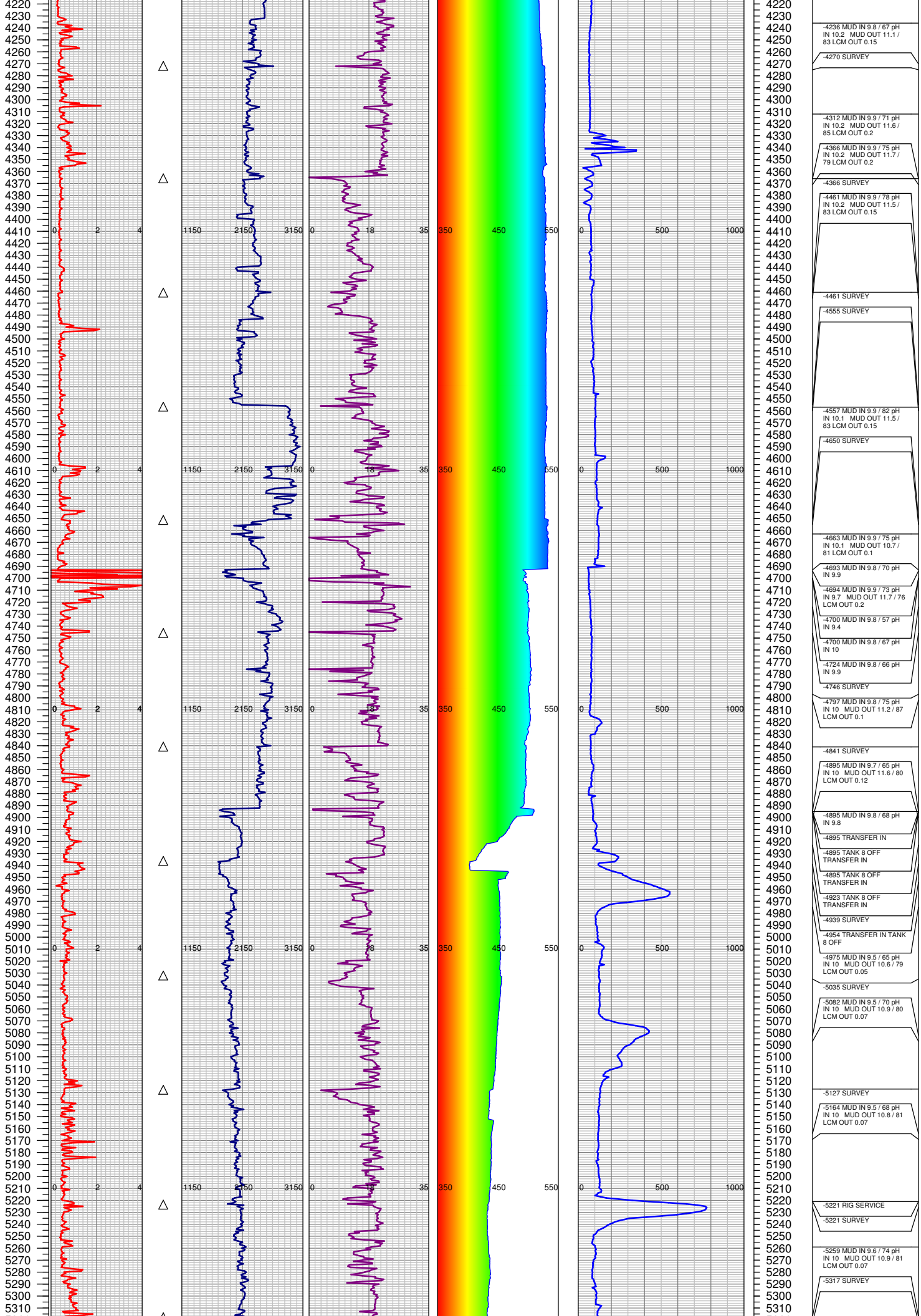
TD DATE: 8/3/2014

DATES LOGGED: 7/27/2014-8/3/2014









-4236 MUD IN 9.8 / 67 pH
IN 10.2 MUD OUT 11.1 /
83 LCM OUT 0.15

-4270 SURVEY

-4312 MUD IN 9.9 / 71 pH
IN 10.2 MUD OUT 11.6 /
85 LCM OUT 0.2

-4366 MUD IN 9.9 / 75 pH
IN 10.2 MUD OUT 11.7 /
79 LCM OUT 0.2

-4366 SURVEY

-4461 MUD IN 9.9 / 78 pH
IN 10.2 MUD OUT 11.5 /
83 LCM OUT 0.15

-4461 SURVEY

-4555 SURVEY

-4557 MUD IN 9.9 / 82 pH
IN 10.1 MUD OUT 11.5 /
83 LCM OUT 0.15

-4650 SURVEY

-4663 MUD IN 9.9 / 75 pH
IN 10.1 MUD OUT 10.7 /
81 LCM OUT 0.1

-4693 MUD IN 9.8 / 70 pH
IN 9.9

-4694 MUD IN 9.9 / 73 pH
IN 9.7 MUD OUT 11.7 / 76
LCM OUT 0.2

-4700 MUD IN 9.8 / 57 pH
IN 9.4

-4700 MUD IN 9.8 / 67 pH
IN 10

-4724 MUD IN 9.8 / 66 pH
IN 9.9

-4746 SURVEY

-4797 MUD IN 9.8 / 75 pH
IN 10.1 MUD OUT 11.2 / 87
LCM OUT 0.1

-4841 SURVEY

-4895 MUD IN 9.7 / 65 pH
IN 10 MUD OUT 11.6 / 80
LCM OUT 0.12

-4895 MUD IN 9.8 / 68 pH
IN 9.8

-4895 TRANSFER IN

-4895 TANK 8 OFF
TRANSFER IN

-4895 TANK 8 OFF
TRANSFER IN

-4923 TANK 8 OFF
TRANSFER IN

-4939 SURVEY

-4954 TRANSFER IN TANK
8 OFF

-4975 MUD IN 9.5 / 65 pH
IN 10 MUD OUT 10.6 / 79
LCM OUT 0.05

-5035 SURVEY

-5082 MUD IN 9.5 / 70 pH
IN 10 MUD OUT 10.9 / 80
LCM OUT 0.07

-5127 SURVEY

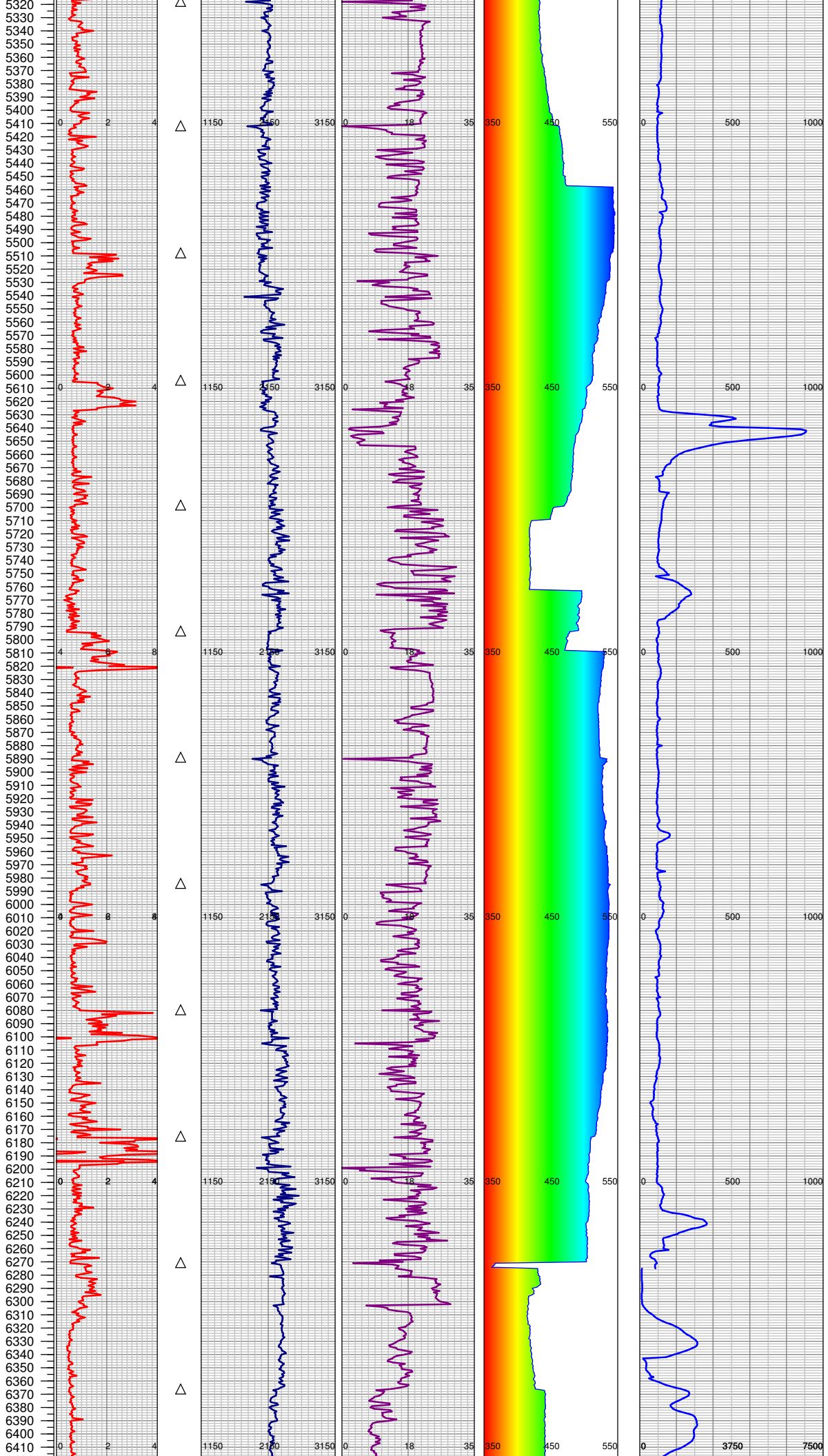
-5164 MUD IN 9.5 / 68 pH
IN 10 MUD OUT 10.8 / 81
LCM OUT 0.07

-5221 RIG SERVICE

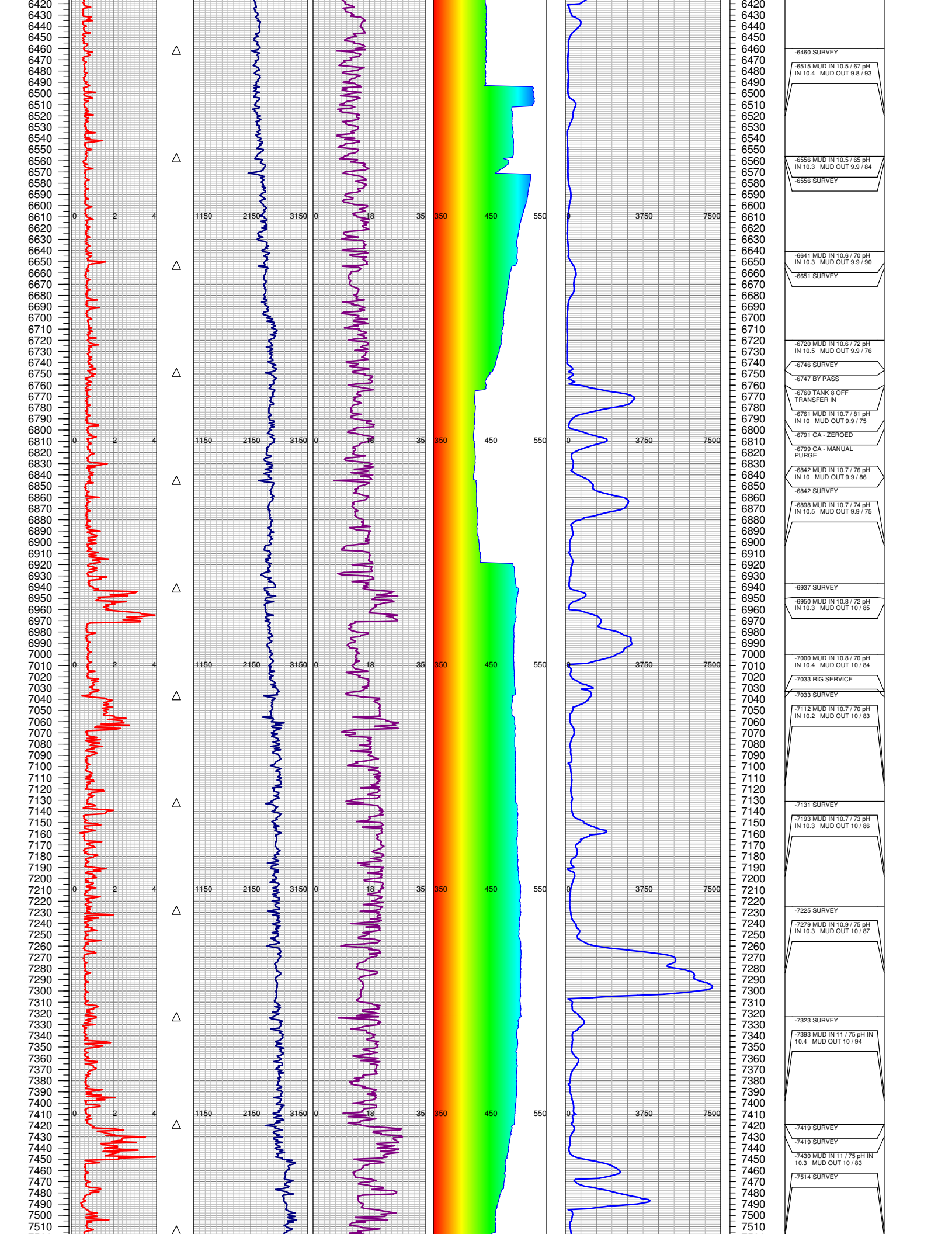
-5221 SURVEY

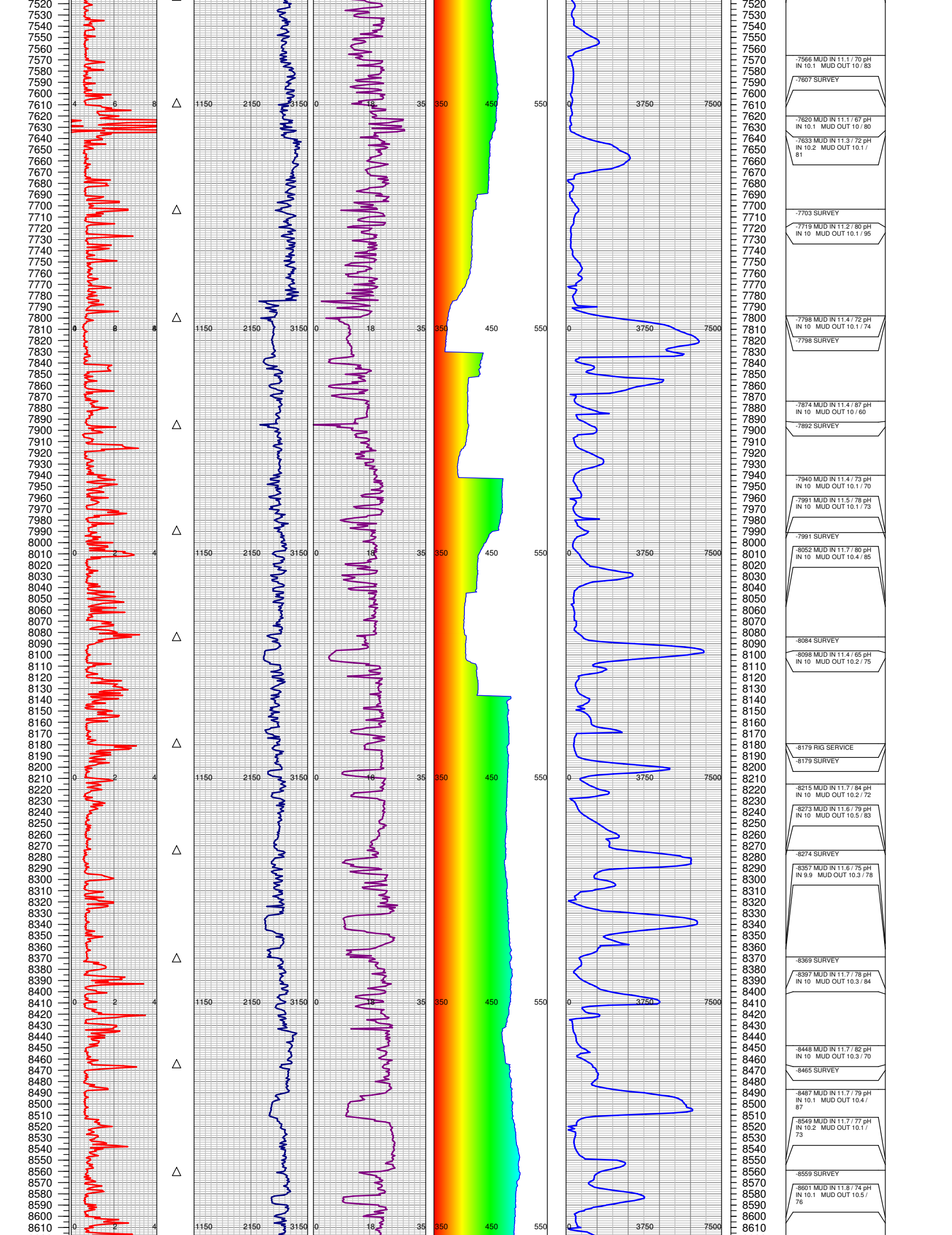
-5259 MUD IN 9.6 / 74 pH
IN 10 MUD OUT 10.9 / 81
LCM OUT 0.07

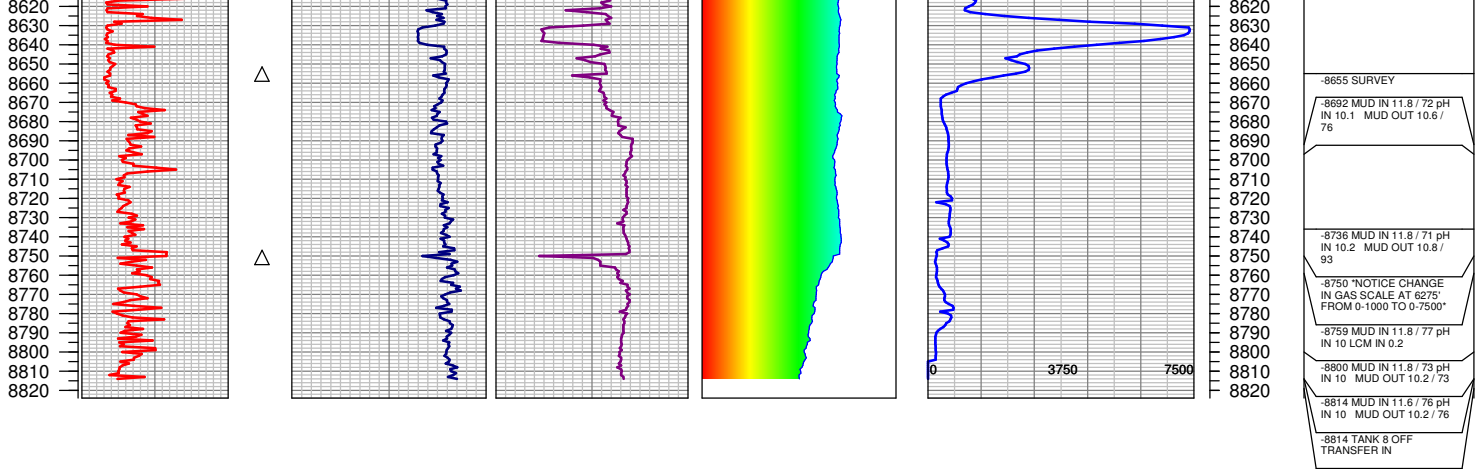
-5317 SURVEY



5320	
5330	
5340	
5350	-5340 MUD IN 9.6 / 81 pH IN 10.1 MUD OUT 11 / 82 LCM OUT 0.07
5360	
5370	-5411 SURVEY
5380	
5390	
5400	
5410	
5420	-5418 MUD IN 9.6 / 73 pH IN 10.3 MUD OUT 10.9 / 77 LCM OUT 0.07
5430	
5440	-5506 SURVEY
5450	
5460	
5470	
5480	
5490	
5500	
5510	
5520	-5510 MUD IN 9.7 / 71 pH IN 10.2 MUD OUT 11.2 / 77 LCM OUT 0.08
5530	
5540	-5531 SENT SWEEP
5550	
5560	
5570	
5580	
5590	
5600	
5610	-5602 SURVEY
5620	-5604 MUD IN 10 / 69 pH IN 10.1 MUD OUT 11.5 / 78 LCM OUT 0.15
5630	
5640	-5629 MUD IN 10.7 / 71 pH IN 10 MUD OUT 11.6 / 97 LCM OUT 0.15
5650	
5660	
5670	-5699 SURVEY
5680	
5690	
5700	
5710	-5702 MUD IN 10.1 / 70 pH IN 10.1
5720	
5730	-5793 SURVEY
5740	
5750	
5760	
5770	
5780	
5790	
5800	
5810	
5820	-5811 MUD IN 10.2 / 68 pH IN 10.3 MUD OUT 9.4 / 65
5830	
5840	-5881 MUD IN 10.2 / 70 pH IN 10.1 MUD OUT 9.4 / 73
5850	
5860	
5870	
5880	
5890	-5888 SURVEY
5900	
5910	-5943 MUD IN 10.2 / 65 pH IN 10.1 MUD OUT 9.5 / 75
5920	
5930	
5940	
5950	
5960	
5970	
5980	
5990	-5984 SURVEY
6000	-6007 MUD IN 10.1 / 65 pH IN 10.2 MUD OUT 9.6 / 72
6010	
6020	
6030	
6040	
6050	
6060	
6070	
6080	-6079 SURVEY
6090	-6089 MUD IN 10.2 / 72 pH IN 10.2 MUD OUT 9.6 / 78
6100	
6110	
6120	
6130	
6140	-6139 MUD IN 10.2 / 74 pH IN 10.1 MUD OUT 9.7 / 86
6150	
6160	-6176 SURVEY
6170	
6180	-6179 MUD IN 10.3 / 72 pH IN 10.2 MUD OUT 9.7 / 75
6190	
6200	-6205 MUD IN 10.3 / 75 pH IN 10 MUD OUT 9.8 / 84
6210	
6220	
6230	
6240	
6250	
6260	
6270	-6271 MUD IN 10.4 / 62 pH IN 10.3
6280	-6271 MUD IN 10.4 / 75 pH IN 10.2
6290	
6300	-6271 SURVEY
6310	
6320	-6271 MUD IN 10.4 / 76 pH IN 10 MUD OUT 9.8 / 81
6330	
6340	-6275 NOTICE CHANGE IN GAS SCALE AT 6275 FROM 0-1000 TO 0-7500
6350	
6360	-6303 MUD IN 10.5 / 78 pH IN 10.3
6370	
6380	-6365 SURVEY
6390	
6400	-6410 MUD IN 10.5 / 69 pH IN 10.5 MUD OUT 9.8 / 84
6410	







TOTAL DEPTH = 8814'

FGS RELEASED: 8/3/2014