

OPERATOR: **WPX ENERGY**

WELL NAME: RWF 344-25

FIELD NAME: RULISON

DRILLING RIG: NABORS 577

API #: 05-045-21998

LOCATION: SEC. 25 T 6S R 94W

SURFACE HOLE: 1147' FSL , 1381' FEL

BOTTOM HOLE: 840' FSL , 917' FEL

SCALE: 1"=100'



533 Bogart Lane, Unit A
Grand Junction, CO 81505
Office (970) 424-5162

RWF 344-25

COUNTY: GARFIELD

STATE: COLORADO

DRILLING FLUID: LSND

LOGGER: LUKE DAVENPORT

GROUND ELEVATION: 6234'

KELLY BUSHING: 6260'

TVD VS. MD = -29'

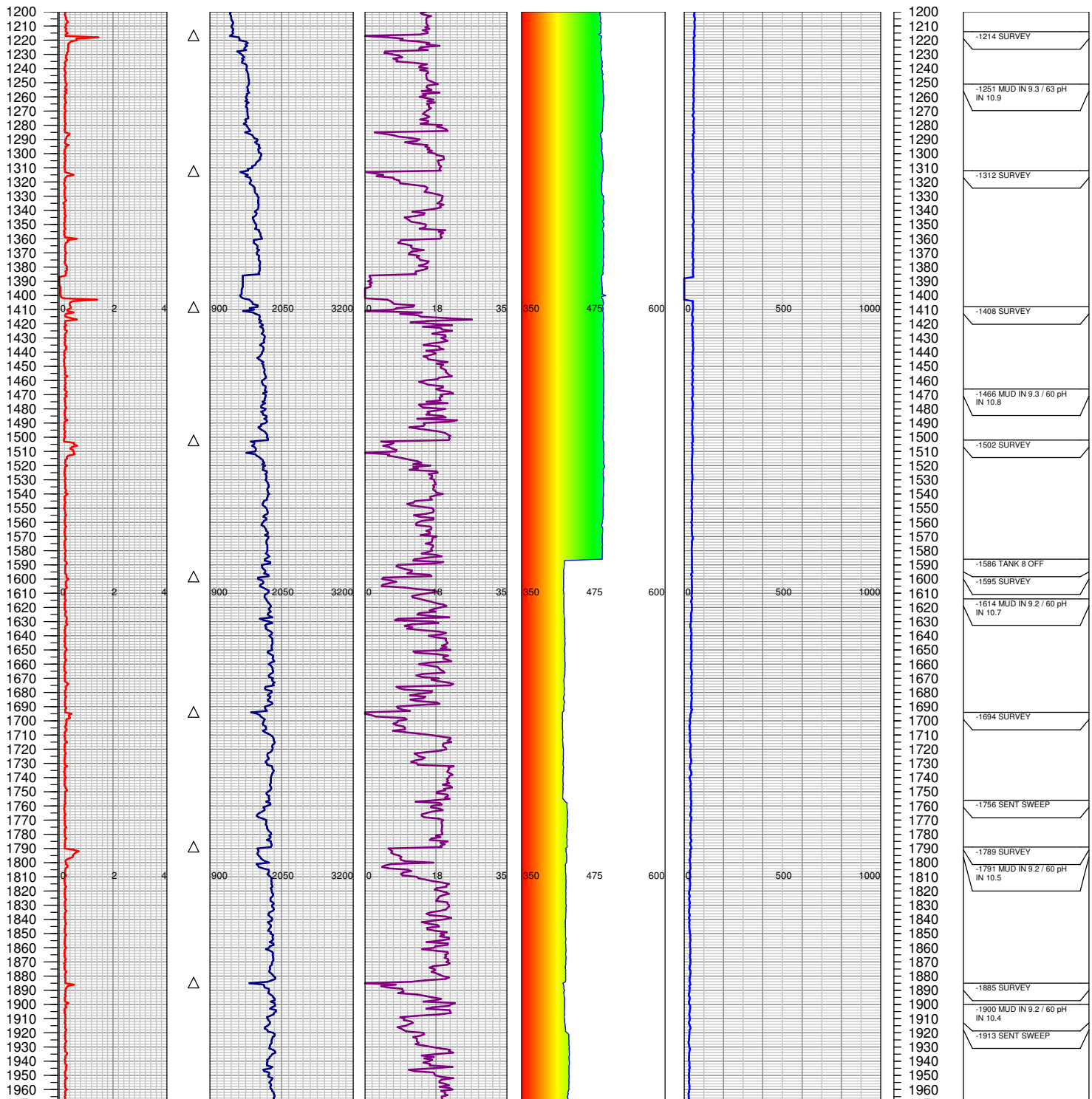
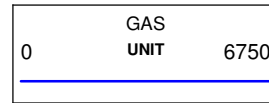
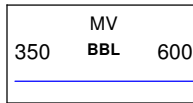
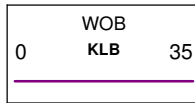
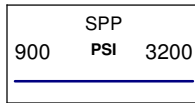
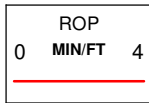
DEPTHS LOGGED: 1200'-8846'

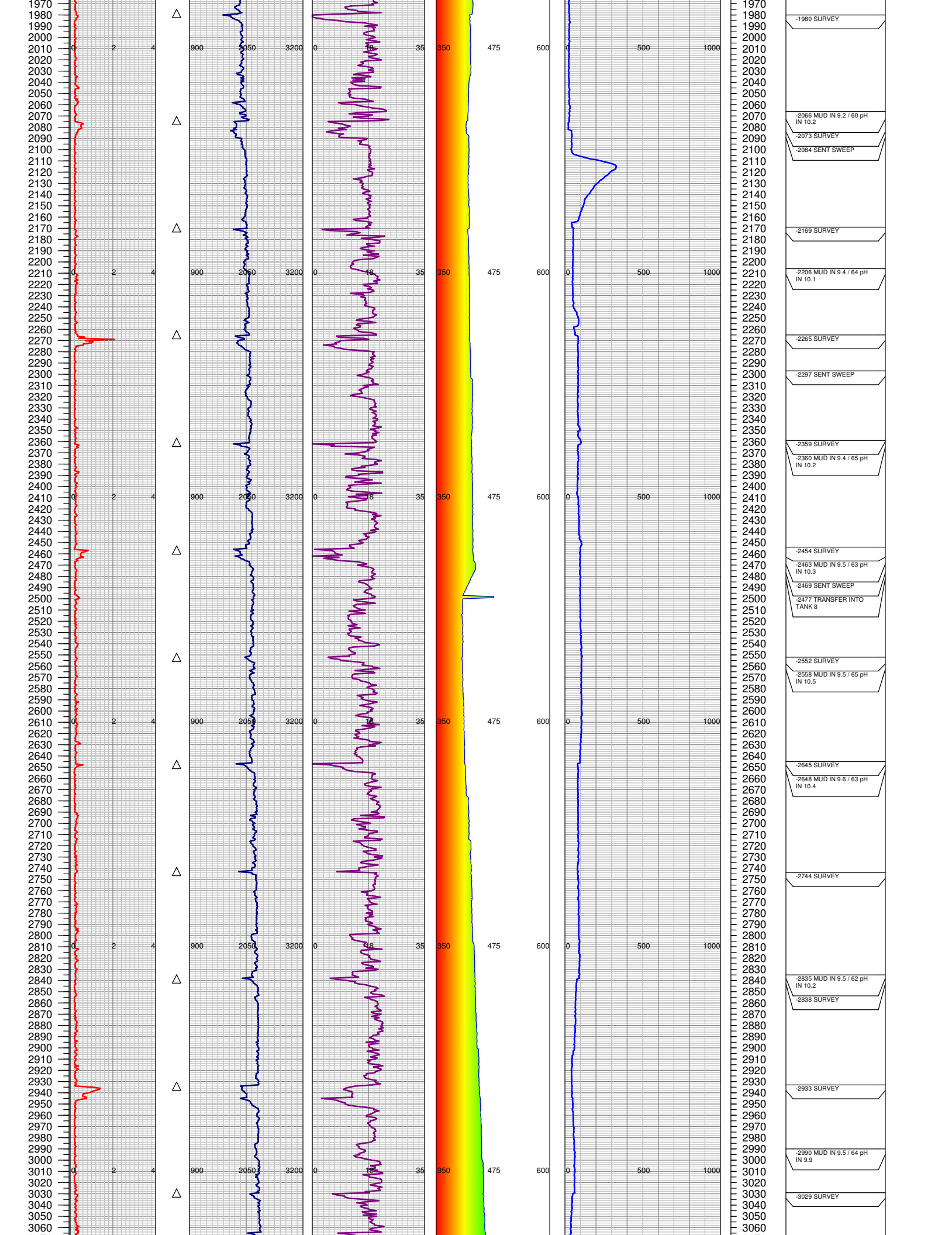
SPUD DATE: 8/15/2014

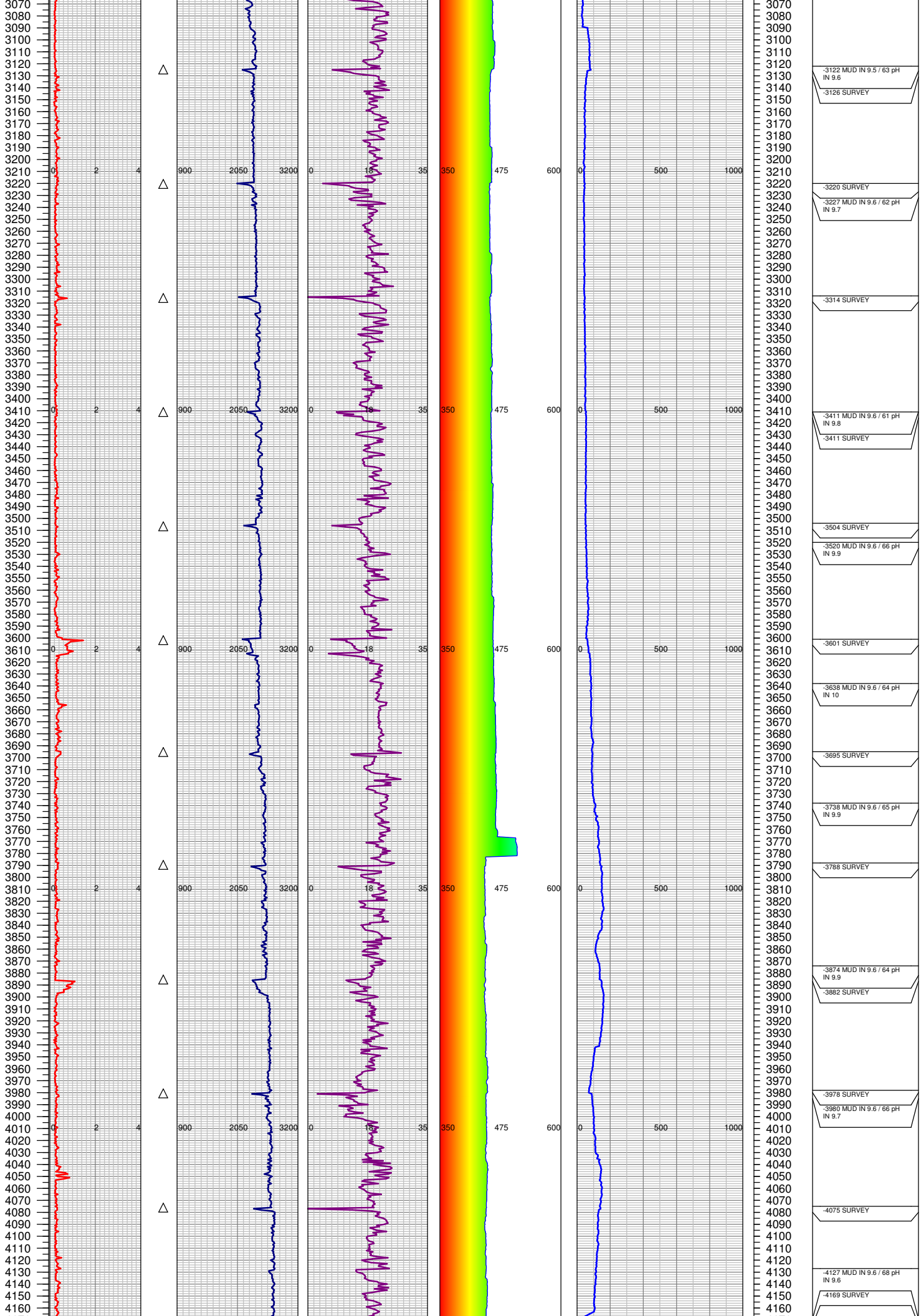
FGS BEGIN LOGGING: 8/17/2014

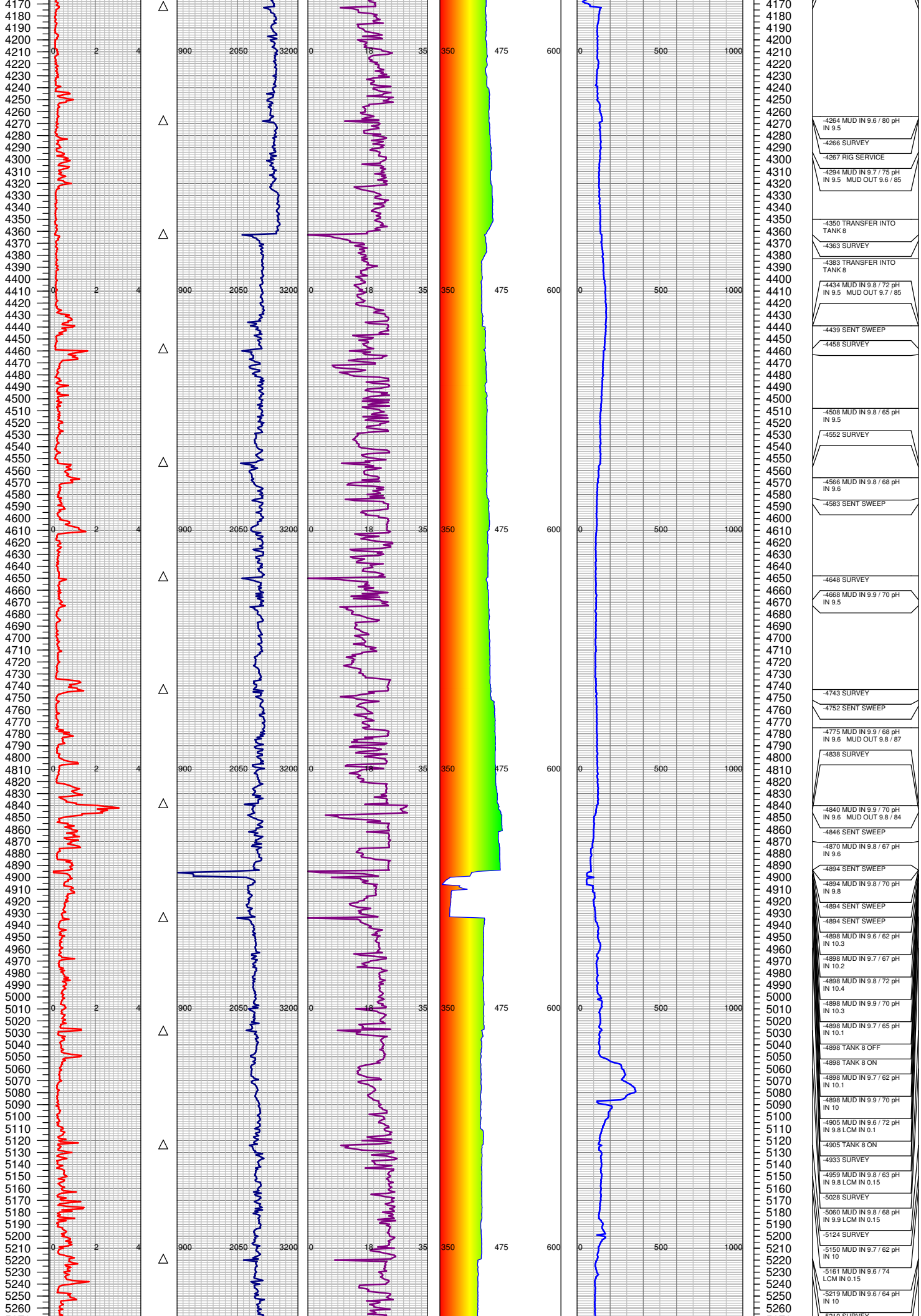
TD DATE: 8/23/2014

DATES LOGGED: 8/17/2014-8/23/2014









4264 MUD IN 9.6 / 80 pH
IN 9.5

4266 SURVEY

4267 RIG SERVICE

4294 MUD IN 9.7 / 75 pH
IN 9.5 MUD OUT 9.6 / 85

4350 TRANSFER INTO
TANK 8

4363 SURVEY

4383 TRANSFER INTO
TANK 8

4434 MUD IN 9.8 / 72 pH
IN 9.5 MUD OUT 9.7 / 85

4439 SENT SWEEP

4458 SURVEY

4508 MUD IN 9.8 / 65 pH
IN 9.5

4552 SURVEY

4566 MUD IN 9.8 / 68 pH
IN 9.6

4583 SENT SWEEP

4648 SURVEY

4668 MUD IN 9.9 / 70 pH
IN 9.5

4743 SURVEY

4752 SENT SWEEP

4775 MUD IN 9.9 / 68 pH
IN 9.6 MUD OUT 9.8 / 87

4838 SURVEY

4840 MUD IN 9.9 / 70 pH
IN 9.6 MUD OUT 9.8 / 84

4846 SENT SWEEP

4870 MUD IN 9.8 / 67 pH
IN 9.6

4894 SENT SWEEP

4894 MUD IN 9.8 / 70 pH
IN 9.8

4894 SENT SWEEP

4894 SENT SWEEP

4898 MUD IN 9.6 / 62 pH
IN 10.3

4898 MUD IN 9.7 / 67 pH
IN 10.2

4898 MUD IN 9.8 / 72 pH
IN 10.4

4898 MUD IN 9.9 / 70 pH
IN 10.3

4898 MUD IN 9.7 / 65 pH
IN 10.1

4898 TANK 8 OFF

4898 TANK 8 ON

4898 MUD IN 9.7 / 62 pH
IN 10.1

4898 MUD IN 9.9 / 70 pH
IN 10

4905 MUD IN 9.6 / 72 pH
IN 9.8 LCM IN 0.1

4905 TANK 8 ON

4933 SURVEY

4959 MUD IN 9.8 / 63 pH
IN 9.8 LCM IN 0.15

5028 SURVEY

5060 MUD IN 9.8 / 68 pH
IN 9.9 LCM IN 0.15

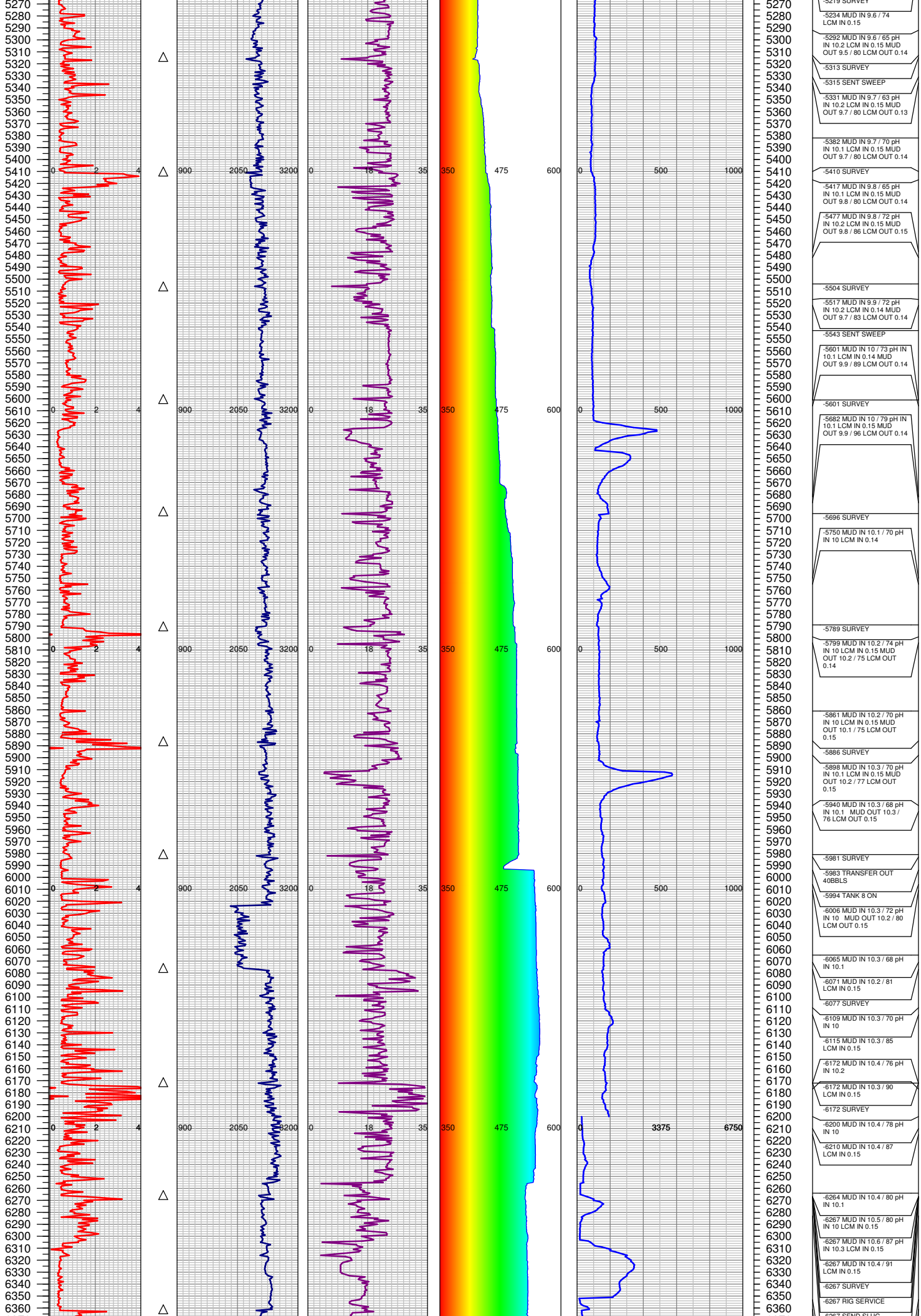
5124 SURVEY

5150 MUD IN 9.7 / 62 pH
IN 10

5161 MUD IN 9.6 / 74
LCM IN 0.15

5219 MUD IN 9.6 / 64 pH
IN 10

5219 SURVEY



-5219 SURVEY

-5234 MUD IN 9.6 / 74
LCM IN 0.15

-5292 MUD IN 9.6 / 65 pH
IN 10.2 LCM IN 0.15 MUD
OUT 9.5 / 80 LCM OUT 0.14

-5313 SURVEY

-5315 SENT SWEEP

-5331 MUD IN 9.7 / 63 pH
IN 10.2 LCM IN 0.15 MUD
OUT 9.7 / 80 LCM OUT 0.13

-5382 MUD IN 9.7 / 70 pH
IN 10.1 LCM IN 0.15 MUD
OUT 9.7 / 80 LCM OUT 0.14

-5410 SURVEY

-5417 MUD IN 9.8 / 65 pH
IN 10.1 LCM IN 0.15 MUD
OUT 9.8 / 80 LCM OUT 0.14

-5477 MUD IN 9.8 / 72 pH
IN 10.2 LCM IN 0.15 MUD
OUT 9.8 / 86 LCM OUT 0.15

-5504 SURVEY

-5517 MUD IN 9.9 / 72 pH
IN 10.2 LCM IN 0.14 MUD
OUT 9.7 / 83 LCM OUT 0.14

-5543 SENT SWEEP

-5601 MUD IN 10 / 73 pH IN
10.1 LCM IN 0.14 MUD
OUT 9.9 / 89 LCM OUT 0.14

-5601 SURVEY

-5682 MUD IN 10 / 79 pH IN
10.1 LCM IN 0.15 MUD
OUT 9.9 / 96 LCM OUT 0.14

-5696 SURVEY

-5750 MUD IN 10.1 / 70 pH
IN 10 LCM IN 0.14

-5789 SURVEY

-5799 MUD IN 10.2 / 74 pH
IN 10 LCM IN 0.15 MUD
OUT 10.2 / 75 LCM OUT
0.14

-5861 MUD IN 10.2 / 70 pH
IN 10 LCM IN 0.15 MUD
OUT 10.1 / 75 LCM OUT
0.15

-5886 SURVEY

-5898 MUD IN 10.3 / 70 pH
IN 10.1 LCM IN 0.15 MUD
OUT 10.2 / 77 LCM OUT
0.15

-5940 MUD IN 10.3 / 68 pH
IN 10.1 MUD OUT 10.3 /
76 LCM OUT 0.15

-5981 SURVEY

-5983 TRANSFER OUT
40BBLs

-5994 TANK 8 ON

-6006 MUD IN 10.3 / 72 pH
IN 10 MUD OUT 10.2 / 80
LCM OUT 0.15

-6065 MUD IN 10.3 / 68 pH
IN 10.1

-6071 MUD IN 10.2 / 81
LCM IN 0.15

-6077 SURVEY

-6109 MUD IN 10.3 / 70 pH
IN 10

-6115 MUD IN 10.3 / 85
LCM IN 0.15

-6172 MUD IN 10.4 / 76 pH
IN 10.2

-6172 MUD IN 10.3 / 90
LCM IN 0.15

-6172 SURVEY

-6200 MUD IN 10.4 / 78 pH
IN 10

-6210 MUD IN 10.4 / 87
LCM IN 0.15

-6264 MUD IN 10.4 / 80 pH
IN 10.1

-6267 MUD IN 10.5 / 80 pH
IN 10 LCM IN 0.15

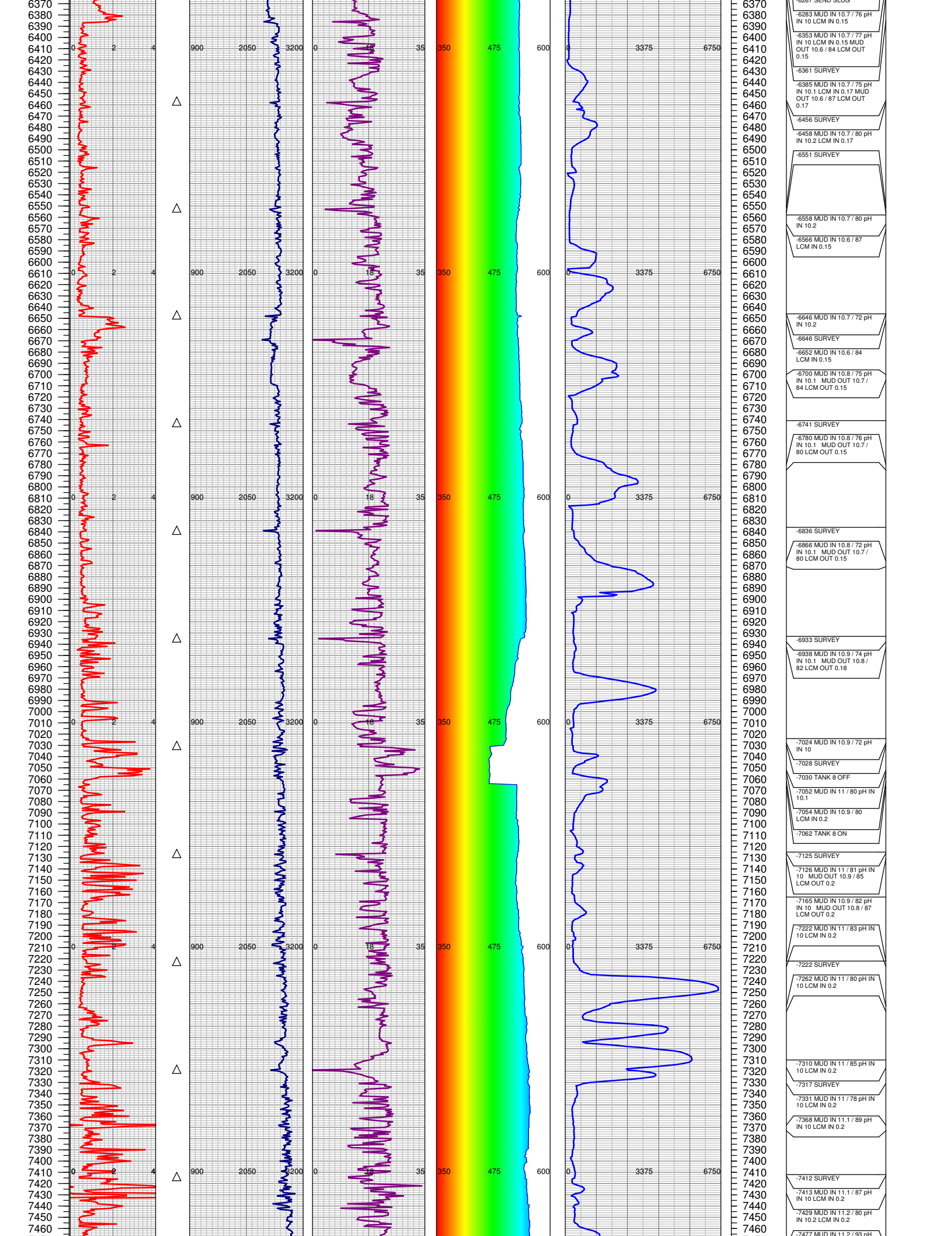
-6267 MUD IN 10.6 / 87 pH
IN 10.3 LCM IN 0.15

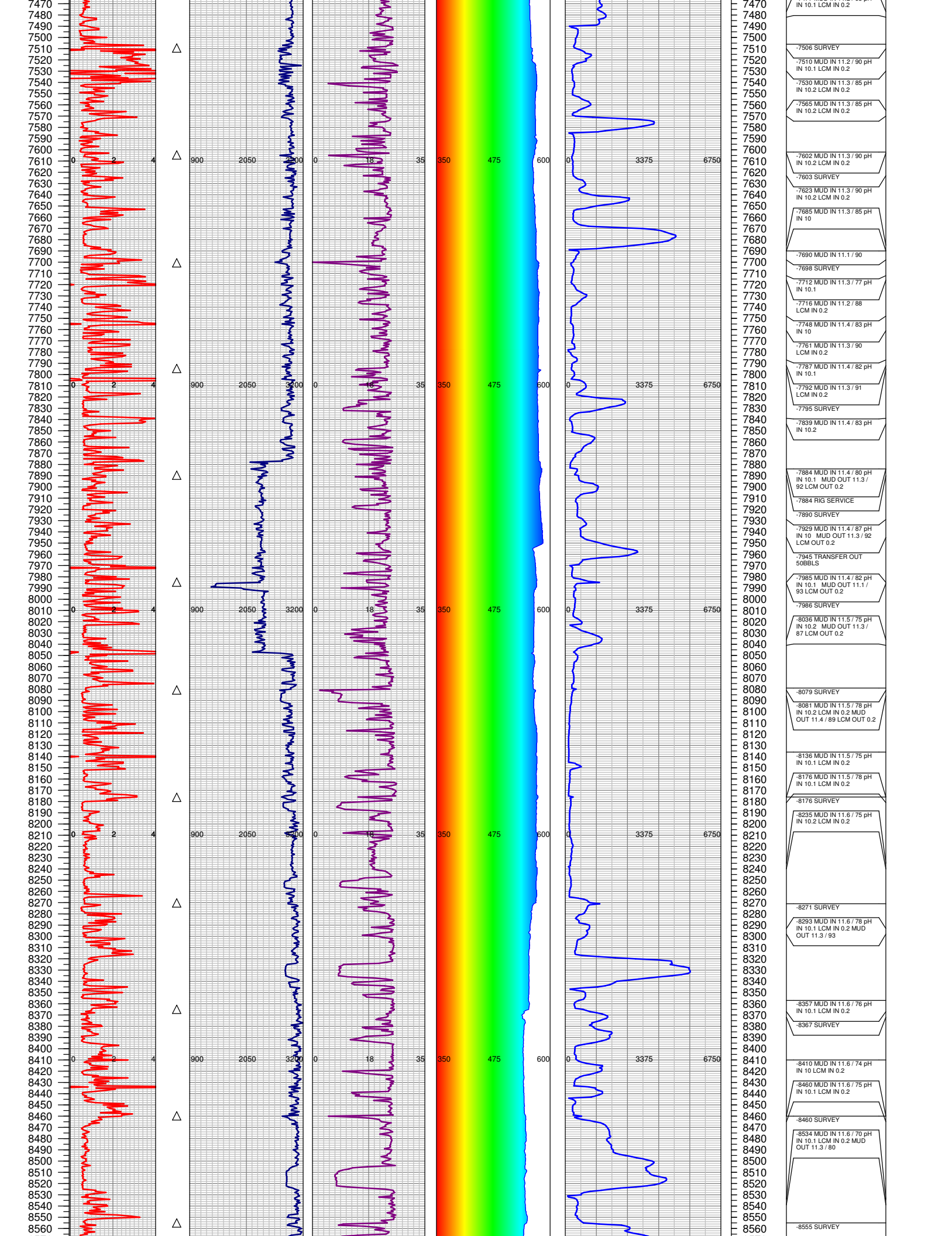
-6267 MUD IN 10.4 / 91
LCM IN 0.15

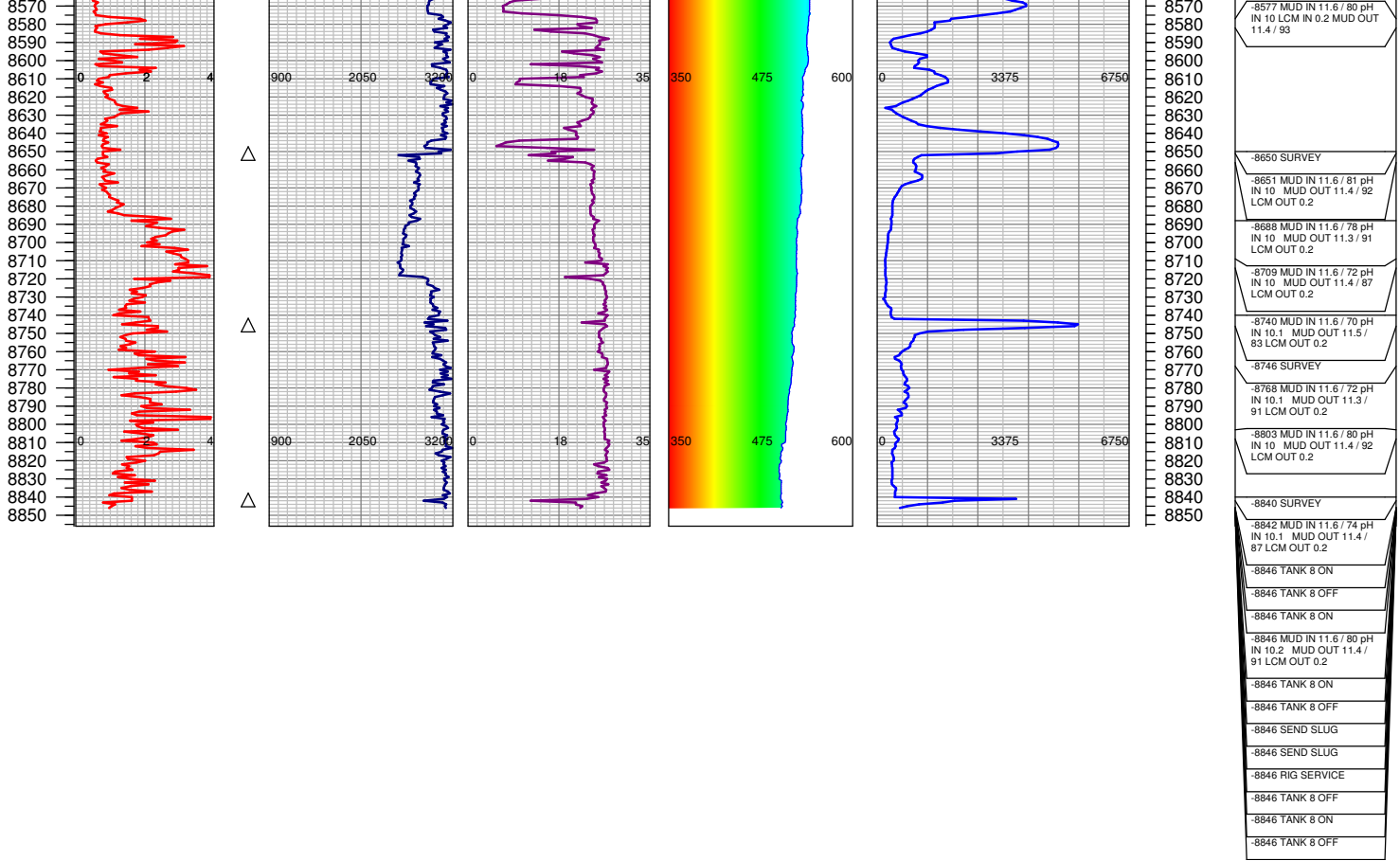
-6267 SURVEY

-6267 RIG SERVICE

-6267 RIG SERVICE







TOTAL DEPTH = 8846'

FGS RELEASED: 8/23/2014