

Field Ticket Number: 0901644606

Field Ticket Date: Friday, September 05, 2014

Planning Order #: NA

Bill To:

NOBLE ENERGY INC E-BUSINESS,
DONOTMAIL-1001 NOBLE ENERGY WAY,
HOUSTON, TX, 77070

Ship To:

HANSCOME -G- 11-4, WELD,
LA SALLE, CO, 80645

Job Name:

Annular Fill

Order Type:

ZOH

Well Name:

HANSCOME -G- 11-4

Company Code:

1100

Customer PO No.:

200102

Shipping Point:

FORT LUPTON Shipping Point

Sales Office:

ROCKY MOUNTAINS BD

Well Type:

VERTICAL GAS

Well Category:

Development

Rig Name/#:

Workover

Material	Description	QTY	UOM	Unit Amount	Gross Amount	Discount	Net Amount
14099	CMT RECEMENT BOM	1	JOB				0
2	MILEAGE FOR CEMENTING CREW Number of Units	70 1	MI				8
1	ZI-MILEAGE FROM NEAREST HES BASE,/UNIT Number of Units	70 1	MI				2
16091	ZI - PUMPING CHARGE DEPTH FEET/METERS (FT/M)	1 573 FT	EA				3
114	RIA DENSOMETER W/CHART RECORDER,/JOB,ZI NUMBER OF UNITS	1 1	JOB				0
130104	PORT. DATA ACQUIS. W/OPTICEM RT W/HES DAYS OR PARTIAL DAY(WHOLE NO.)	1 1	EA				0
	SURCHARGES						
92	PORTABLE RADIOS, ZI NUMBER OF JOBS	4 1	EA				1
7	ENVIRONMENTAL CHARGE,/JOB,ZI	1	JOB				1
8	IRON SAFETY INSPECTION SURCHARGE /JOB ZI	1	JOB				1
372867	Cmt PSL - DOT Vehicle Charge, CMT	2	EA				2
86954	ZI FUEL SURCHG-CARS/PICKUPS<1 1/2TON Number of Units	70 1	MI				1
86955	ZI FUEL SURCHG-HEAVY TRKS >1 1/2 TON Number of Units	70 1	MI				1
	CEMENTING MATERIALS						
452986	CMT, HalCem (TM) system	147	SK				2
10008028	CHEM, SUGAR, GRANULATED, 50LB BAG	50	LB				1
78400	MILEAGE,CMT MTLs DEL/RET MIN NUMBER OF TONS	35 16.591	MI				1
87605	FUEL SURCHG-CMT & CMT ADDITIVES NUMBER OF TONS	35 16.591	MI				1
139	ADC (AUTO DENSITY CTRL) SYS, /JOB,ZI NUMBER OF UNITS	1 1	JOB				2
3965	HANDLE&DUMP SVC CHRg, CMT&ADDITIVES,ZI NUMBER OF EACH Unit of Measurement	250 1 EA	CF				1

Totals

The Road to Excellence Starts with Safety

Sold To #: 345242	Ship To #: 3579589	Quote #:	Sales Order #: 0901644606
Customer: NOBLE ENERGY INC E-BUSINESS		Customer Rep: RICK SHEETS	
Well Name: HANSCOME -G-	Well #: 11-4	API/UWI #: 05-123-22194-00	
Field: WATTENBERG	City (SAP): LA SALLE	County/Parish: WELD	State: COLORADO
Legal Description: NW NW-11-4N-65W-470FNL-469FWL			
Contractor:		Rig/Platform Name/Num: Workover	
Job BOM: 14099			
Well Type: VERTICAL GAS			
Sales Person: HALAMERICA\HB21661		Srvc Supervisor: Aaron Smith	

Job

Formation Name			
Formation Depth (MD)	Top		Bottom
Form Type	BHST		
Job depth MD	ft		Job Depth TVD 573
Water Depth			Wk Ht Above Floor 4
Perforation Depth (MD)	From		To

Well Data

Description	New / Used	Size in	ID in	Weight lbm/ft	Thread	Grade	Top MD ft	Bottom MD ft	Top TVD ft	Bottom TVD ft
Casing		8.625	8.097	24			0	402		0
Tubing		2.875	2.586				0	573		0
Casing		4.5	3.826	15.1			0	6600		

Tools and Accessories

Type	Size in	Qty	Make	Depth ft	Type	Size in	Qty	Make
Guide Shoe	4.5			6600	Top Plug	4.5		HES
Float Shoe	4.5				Bottom Plug	4.5		HES
Float Collar	4.5				SSR plug set	4.5		HES
Insert Float	4.5				Plug Container	4.5		HES
Stage Tool	4.5				Centralizers	4.5		HES

Miscellaneous Materials

Gelling Agt	Conc	Surfactant	Conc	Acid Type	Qty	Conc
Treatment Fld	Conc	Inhibitor	Conc	Sand Type	Size	Qty

Fluid Data

Stage/Plug #: 1

Fluid #	Stage Type	Fluid Name	Qty	Qty UoM	Mixing Density lbm/gal	Yield ft ³ /sack	Mix Fluid Gal	Rate bbl/min	Total Mix Fluid Gal
1	Tail Cement	HALCEM (TM) SYSTEM	147	sack	15.8	1.16		2	4.99
		4.99 Gal	FRESH WATER						

Cement Left In Pipe	Amount	ft	Reason	Shoe Joint
Comment				

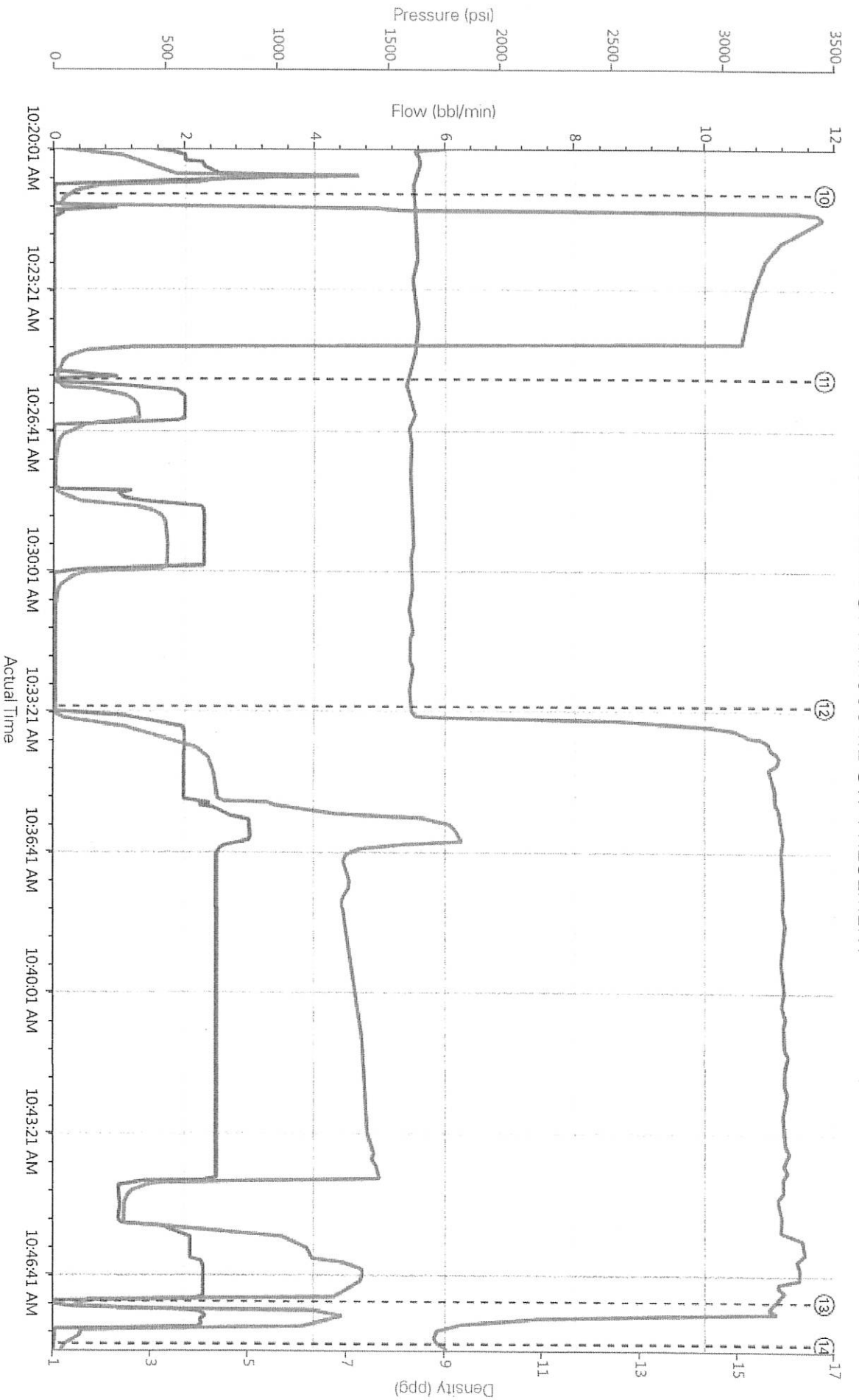
HALLIBURTON

NOBLE ENERGY INC E-BUSINESS
NOBLE ENERGY HANSCOME G11-4 RECEMENT
Case 1

4.5 Job Event Log

Type	Seq. No.	Activity	Graph Label	Date	Time	Source	Comb Pump Rate (bbl/min)	DH Density (ppg)	PS Pump Press (psi)	Comments
Event	1	Call Out	Call Out	9/5/2014	04:00:00	USER				CALLED OUT FOR ON LOCATION @1000
Event	2	Depart Yard Safety Meeting	Depart Yard Safety Meeting	9/5/2014	07:45:00	USER				JOURNEY MANAGEMENT MEETING PRIOR TO DEPARTURE
Event	3	Depart from Service Center or Other Site	Depart from Service Center or Other Site	9/5/2014	08:00:00	USER				WITH ALL EQUIPMENT AND MATERIALS
Event	4	Arrive at Location from Service Center	Arrive at Location from Service Center	9/5/2014	08:45:00	USER				RIG-UP JSA WITH HES CREW
Event	5	Pre-Rig Up Safety Meeting	Pre-Rig Up Safety Meeting	9/5/2014	08:50:00	USER				
Event	6	Rig-Up Equipment	Rig-Up Equipment	9/5/2014	08:55:00	USER				
Event	7	Rig-Up Completed	Rig-Up Completed	9/5/2014	09:05:00	USER				WITH CUSTOMER REP AND RIG CREW
Event	8	Pre-Job Safety Meeting	Pre-Job Safety Meeting	9/5/2014	10:10:00	USER	0.00	10.40	14.00	
Event	9	Start Job	Start Job	9/5/2014	10:18:23	COM4	0.00	10.39	10.00	
Event	10	Test Lines	Test Lines	9/5/2014	10:21:09	COM4	0.00	8.37	48.00	@3000 PSI
Event	11	Pump Spacer 1	Pump Spacer 1	9/5/2014	10:25:32	COM4	0.00	8.19	20.00	5 BBLS FRESH WATER
Event	12	Pump Cement	Pump Cement	9/5/2014	10:33:18	COM4	0.00	8.31	7.00	30 BBLS 147 SKS @ 15.8 PPG, 1.15 YIELD, 5.00 GAL/SK
Event	13	Pump Displacement	Pump Displacement	9/5/2014	10:47:23	COM4	0.00	15.75	96.00	1 BBL FRESH WATER TO DISPLACE TUBING
Event	14	End Job	End Job	9/5/2014	10:48:23	COM4	0.00	9.02	41.00	THANKS AARON SMITH AND CREW
Event	15	Pre-Rig Down Safety Meeting	Pre-Rig Down Safety Meeting	9/5/2014	11:05:00	USER				
Event	16	Rig-Down Equipment	Rig-Down Equipment	9/5/2014	11:10:00	USER				
Event	17	Rig-Down Completed	Rig-Down Completed	9/5/2014	11:10:01	USER				
Event	18	Depart Location for	Depart Location for Service	9/5/2014	11:20:00	USER				DEPART LOCATION FOR

NOBLE ENERGY HANSCOME G11-4 RECEMENT



Comb Pump Rate (bbl/min) DH Density (ppg) PS Pump Press (psi)

- ① Call Out n/a,n/a,n/a
- ② Depart Yard Safety Meeting n/a,n/a,n/a
- ③ Depart from Service Center or Other Site n/a,n/a,n/a
- ④ Arrive at Location from Service Center n/a,n/a,n/a
- ⑤ Pre-Rig Up Safety Meeting n/a,n/a,n/a
- ⑥ Rig-Up Equipment n/a,n/a,n/a
- ⑦ Rig-Up Completed n/a,n/a,n/a
- ⑧ Pre-Job Safety Meeting 0:10:4:14
- ⑨ Start Job 0:10:39:11
- ⑩ Test Lines 0:8:37:41