

KERR-MCGEE OIL AND GAS ONSHORE LP

STREAR 22-23
SE NW 23 2N 67W -- --
WELD,COLORADO
09/18/2014

AREA: W1

ROUTE: W16 Spud: 08/06/1992

WINS No.: 74475

AFE/WO#: 88593699

API#: 0512315946

GL: 4958

KB: 4968

MTD: 8159

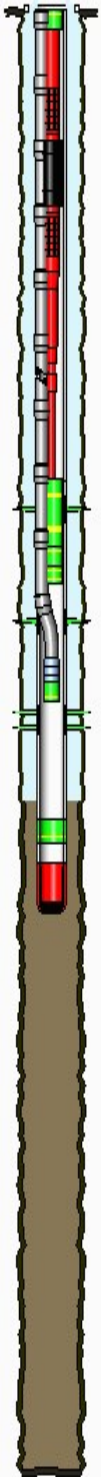
TVD: 8159

LOG MD: 8160

PBMD: 8102

PBTVD: 8102

Directions: CR 20 & CR 21, S 3/10, E 3/10 INTO. KEEP HOT WIRE GATE CLOSED



HOLE SECTIONS	Size	Top	Btm	TD Date
SURFACE	12.25	10	680	08/06/1992
PRODUCTION	7.88	680	8159	08/16/1992

TUBULARS	Tool Type	Joints	Size	Weight	Grade	Thread	Top D	Bottom D
SURFACE CASING	Casing	15	8.63	24	J-55		10	670
PRODUCTION CASING	Casing	116	4.50	11.6	WC-70	LTC	10	4942
		1	4.50				4942	4945
	Casing	75	4.50	11.6	WC-70	LTC	4945	8115
		1	4.50				8115	8116
	Casing	1	4.50	11.6	WC-70	LTC	8116	8153
	Casing Guide Shoe	1	4.50				8153	8154
PRODUCTION TUBING	Tubing	255	2.38	4.7	J-55		10	7975
	Seating Nipple	1	2.38				7975	7976
	Notched Collar	1	2.38				7976	7977
PRODUCTION TUBING		153	2.38	4.70	J-55	8RD EUE	10	4818
	Packer	1					4818	4822
		86	2.38	4.70	J-55	8RD EUE	4822	7506
	XN Profile Nipple	1	2.38				7506	7508
	Notched Collar	1	2.38				7508	7508

CEMENT JOBS	Stage	Sacks	Cement Jobs	Top D	Btm D	cbf
SURFACE CASING	STAGE 1 TAIL	150	G	400	670	No
	STAGE 1	200	LITE	10	400	No
PRODUCTION CASING	STAGE 2	240	LITEPOZ A	4064	4944	Yes
	STAGE 1	320	G	7101	8153	Yes
--None--	SQUEEZE JOB	100	LEAD FRESH WATER	0	7050	No

PERFORATIONS	Formation	Zone	Top	Btm	Date	Reason	Comments
	NIOBRARA		6800	6801	09/04/2014	CEMENT SQUEEZE	
	NIOBRARA		7050	7051	09/04/2014	CEMENT SQUEEZE	
	NIOBRARA		7330	7336	07/13/1994	PRODUCTION	
	CODELL		7551	7561	07/13/1994	PRODUCTION	
	J SAND		7998	8015	08/25/1992	PRODUCTION	

Comments: