

**PROPOSED LOCATION:
GREEN #3-64 25-26 1H**

SEE TOPO "B"

10.4 MI. +/-

HWY 36 / COLFAX AVE.

INTERSTATE 70

0.3 MI. +/-

EXIT 292

DENVER 17.8 MI. +/-

**R
65
W**

**R
64
W**

**R
64
W**

**R
63
W**

T2S

T3S

T3S

T4S

LEGEND:

PROPOSED LOCATION



ConocoPhillips Company

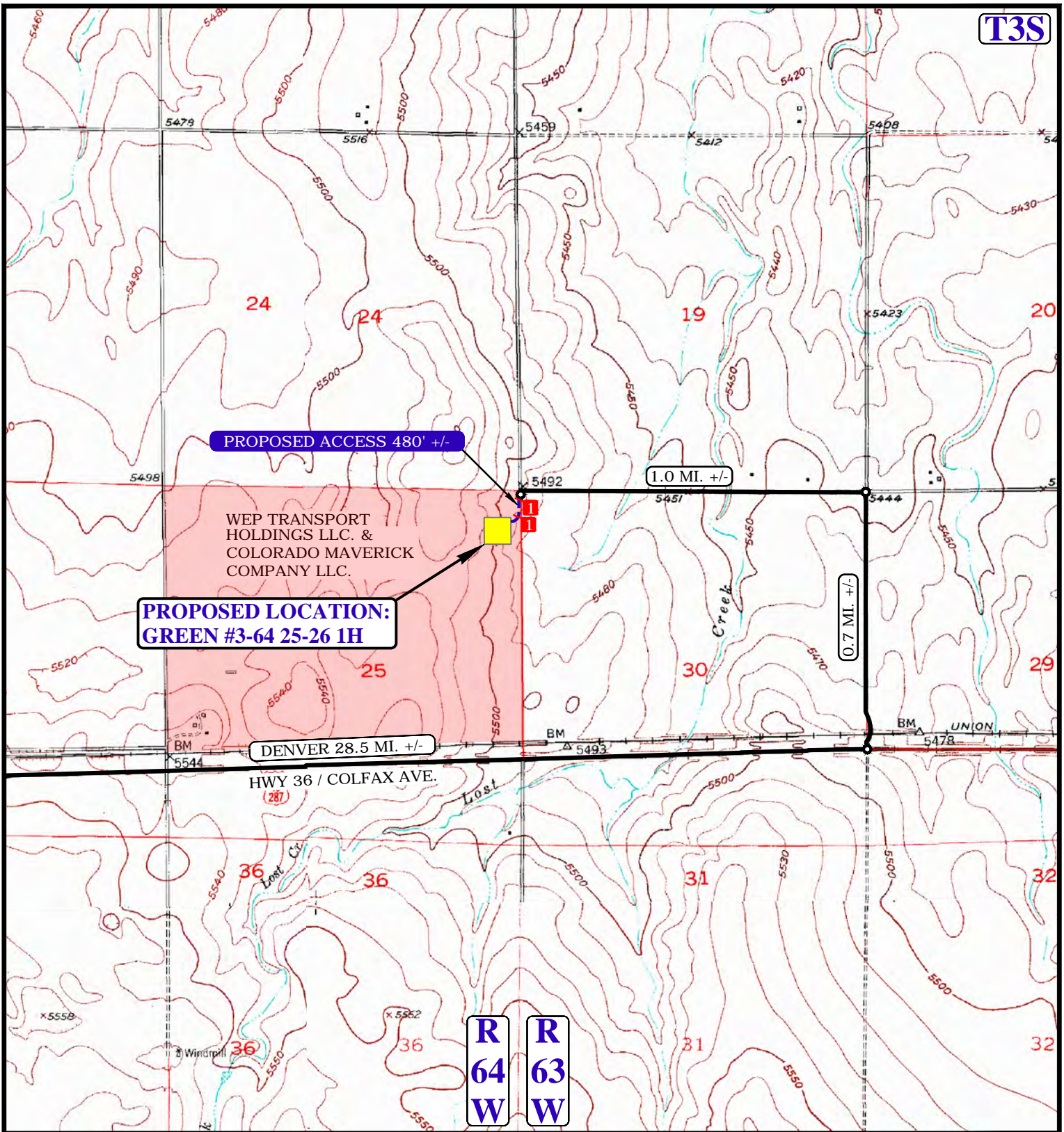
**GREEN #3-64 25-26 1H
SECTION 25, T3S, R64W, 6TH P.M.
560' FNL 350' FEL**



UELS, LLC
Corporate Office * 85 South 200 East
Vernal, UT 84078 * (435) 789-1017




DRAWN BY: Z.H.F.	DATE DRAWN: 06-16-14
SCALE: 1:100,000	REVISED: 00-00-00
ACCESS ROAD MAP	TOPO A

T3S



NOTE: PARCEL DATA SHOWN HAS BEEN OBTAINED FROM VARIOUS SOURCES AND SHOULD BE USED FOR MAPPING, GRAPHIC AND PLANNING PURPOSES ONLY. NO WARRANTY IS MADE BY UINTAH ENGINEERING AND LAND SURVEYING (UELS) FOR ACCURACY OF THE PARCEL DATA.

LEGEND:

-  EXISTING ROAD
-  PROPOSED ROAD
-  18" CMP REQUIRED

ConocoPhillips Company

GREEN #3-64 25-26 1H
SECTION 25, T3S, R64W, 6TH P.M.
560' FNL 350' FEL



DRAWN BY: Z.H.F.	DATE DRAWN: 06-16-14
SCALE: 1" = 2000'	REVISED: 00-00-00
ACCESS ROAD MAP	TOPO B



UELS, LLC
 Corporate Office * 85 South 200 East
 Vernal, UT 84078 * (435) 789-1017