

BILL BARRETT CORP

WELD COUNTY, COLORADO

Anschutz Equus Farms 4-62-33_34 S2S2 Pad

Anschutz Equus Farms 4-62-33-4956CH2

Wellbore #1

Plan: Design #1

Standard Planning Report

14 October, 2014



Bill Barrett Corporation

COMPANY DETAILS: BILL BARRETT CORP

Calculation Method: Minimum Curvature
Error System: ISCWSA
Scan Method: Closest Approach 3D
Error Surface: Elliptical Conic
Warning Method: Error Ratio

REFERENCE INFORMATION

Co-ordinate (N/E) Reference: Well Anschutz Equus Farms 4-62-33-4956CH2, True North
Vertical (TVD) Reference: KB @ 4696.0ft (Original Well Elev)
Section (VS) Reference: Slot - (0.0N, 0.0E)
Measured Depth Reference: KB @ 4696.0ft (Original Well Elev)
Calculation Method: Minimum Curvature

WELL DETAILS: Anschutz Equus Farms 4-62-33-4956CH2

+N/-S	+E/-W	Northing	Easting	Latitude	Longitude
0.0	0.0	1341025.24	3324444.10	40° 15' 49.230 N	104° 20' 14.561 W

SECTION DETAILS

Sec	MD	Inc	Azi	TVD	+N/-S	+E/-W	DLeg	TFace	VSec	Target
1	0.0	0.00	0.00	0.0	0.0	0.0	0.00	0.00	0.0	
2	1000.0	0.00	0.00	1000.0	0.0	0.0	0.00	0.00	0.0	
3	1267.4	5.35	325.12	1267.0	10.2	-7.1	2.00	325.12	-6.8	
4	5600.3	5.35	325.12	5581.1	341.5	-238.1	0.00	0.00	-226.0	
5	5644.9	0.00	90.01	5625.6	343.2	-239.3	12.00	180.00	-227.2	
6	5894.9	0.00	90.01	5875.6	343.2	-239.3	0.00	90.01	-227.2	
7	6650.9	90.72	90.01	6353.0	343.2	244.2	12.00	90.01	256.0	AEF 33-4956CH2 LP
8	16198.8	90.72	90.01	6233.0	341.8	9791.3	0.00	0.00	9797.3	AEF 33-4956CH2 PBHL

PROJECT DETAILS: WELD COUNTY, COLORADO

Geodetic System: US State Plane 1983
Datum: North American Datum 1983
Ellipsoid: GRS 1980
Zone: Colorado Northern Zone

FORMATION TOP DETAILS

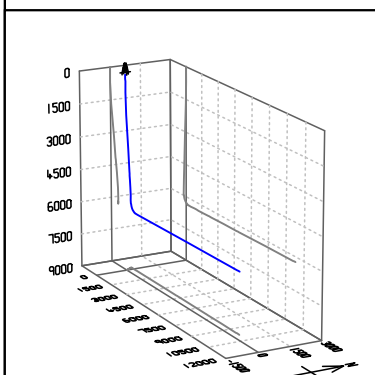
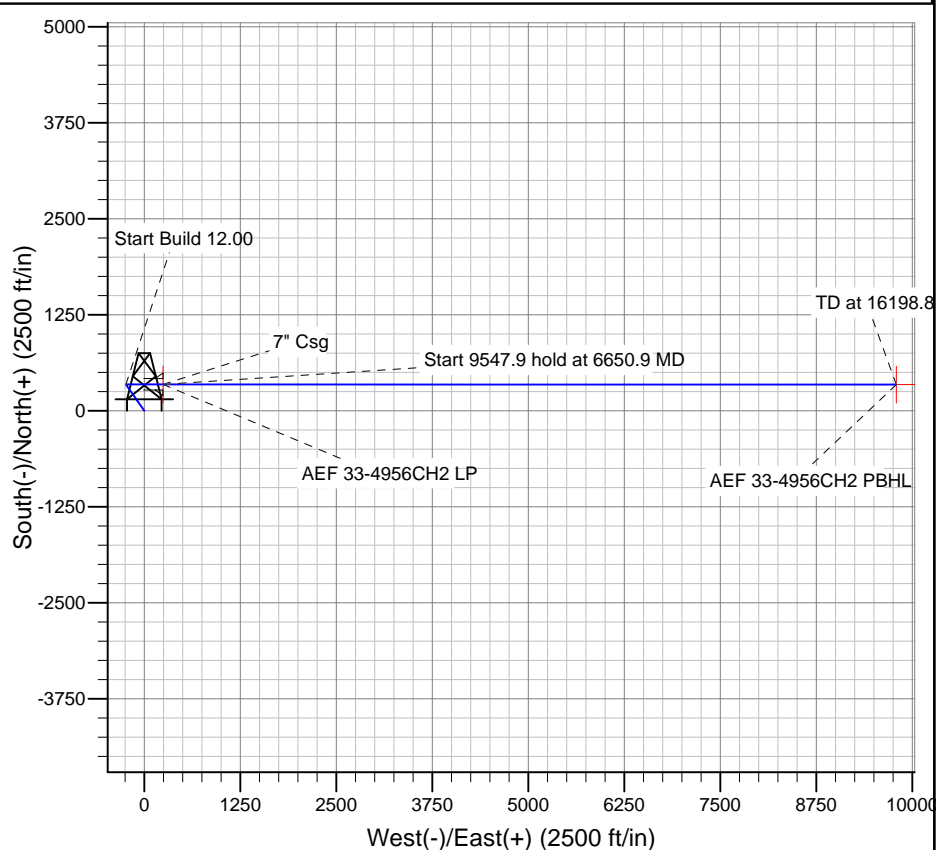
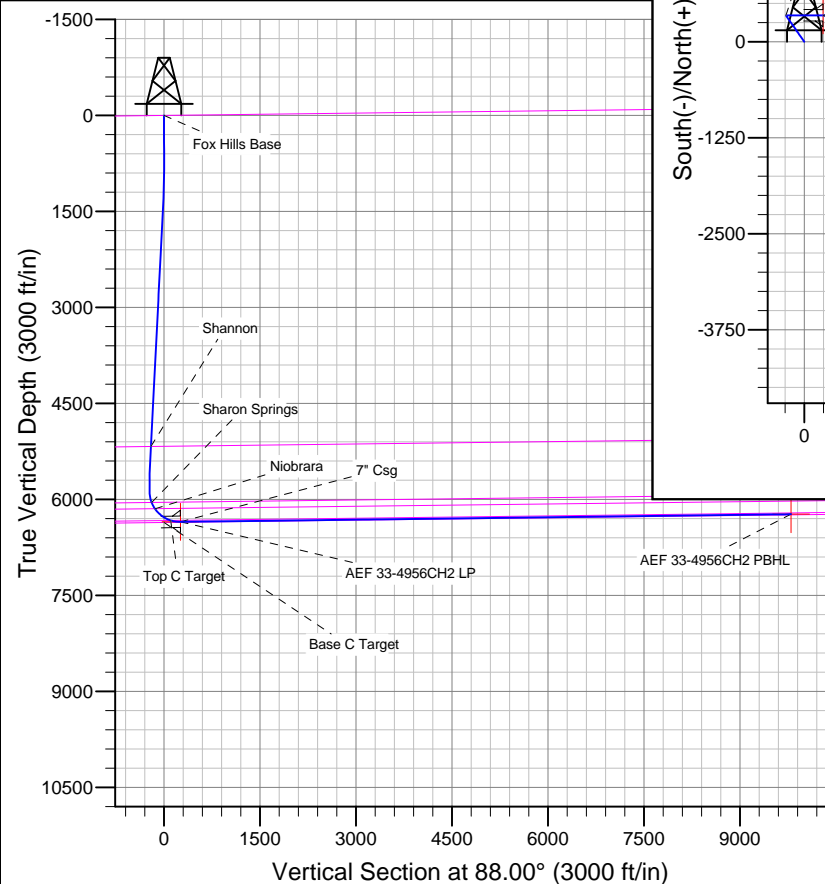
TVDPath	MDPath	Formation
		Base C Target
		Fox Hills Base
5174.6	5192.1	Shannon
6048.5	6071.8	Sharon Springs
6147.9	6184.6	Niobrara
6329.9	6495.6	Top C Target

CASING DETAILS

TVD	MD	Name	Size
6353.0	6650.9	7" Csg	7

WELLBORE TARGET DETAILS

Name	TVD	+N/-S	+E/-W	Shape
AEF 33-4956CH2 PBHL	6233.0	341.8	9791.3	Point
AEF 33-4956CH2 LP	6353.0	343.2	244.2	Point



Azimuths to True North
Magnetic North: 8.25°

Magnetic Field
Strength: 52814.2snT
Dip Angle: 66.91°
Date: 3/21/2014
Model: IGRF2010

Bill Barrett Corp

Planning Report

Database:	Compass	Local Co-ordinate Reference:	Well Anschutz Equus Farms 4-62-33-4956CH2
Company:	BILL BARRETT CORP	TVD Reference:	KB @ 4696.0ft (Original Well Elev)
Project:	WELD COUNTY, COLORADO	MD Reference:	KB @ 4696.0ft (Original Well Elev)
Site:	Anschutz Equus Farms 4-62-33_34 S2S2 Pad	North Reference:	True
Well:	Anschutz Equus Farms 4-62-33-4956CH2	Survey Calculation Method:	Minimum Curvature
Wellbore:	Wellbore #1		
Design:	Design #1		

Project	WELD COUNTY, COLORADO		
Map System:	US State Plane 1983	System Datum:	Mean Sea Level
Geo Datum:	North American Datum 1983		
Map Zone:	Colorado Northern Zone		

Site		Anschutz Equus Farms 4-62-33_34 S2S2 Pad				
Site Position:		Northing:	1,340,979.73ft	Latitude:	40° 15' 48.780 N	
From:	Lat/Long	Easting:	3,324,445.53ft	Longitude:	104° 20' 14.550 W	
Position Uncertainty:		0.0 ft	Slot Radius:	"	Grid Convergence:	0.75 °

Well	Anschutz Equus Farms 4-62-33-4956CH2					
Well Position	+N-S	45.5 ft	Northing:	1,341,025.24 ft	Latitude:	40° 15' 49.230 N
	+E-W	-0.8 ft	Easting:	3,324,444.10 ft	Longitude:	104° 20' 14.561 W
Position Uncertainty		0.0 ft	Wellhead Elevation:	ft	Ground Level:	4,680.0 ft

Wellbore	Wellbore #1				
Magnetics	Model Name	Sample Date	Declination (°)	Dip Angle (°)	Field Strength (nT)
	IGRF2010	3/21/2014	8.25	66.91	52,814

Design	Design #1				
Audit Notes:					
Version:	Phase:	PLAN	Tie On Depth:	0.0	
Vertical Section:	Depth From (TVD) (ft)	+N/-S (ft)	+E/-W (ft)	Direction (°)	
	0.0	0.0	0.0	88.00	

Plan Sections										
Measured Depth (ft)	Inclination (°)	Azimuth (°)	Vertical Depth (ft)	+N/-S (ft)	+E/-W (ft)	Dogleg Rate (°/100ft)	Build Rate (°/100ft)	Turn Rate (°/100ft)	TFO (°)	Target
0.0	0.00	0.00	0.0	0.0	0.0	0.00	0.00	0.00	0.00	
1,000.0	0.00	0.00	1,000.0	0.0	0.0	0.00	0.00	0.00	0.00	
1,267.4	5.35	325.12	1,267.0	10.2	-7.1	2.00	2.00	0.00	325.12	
5,600.3	5.35	325.12	5,581.1	341.5	-238.1	0.00	0.00	0.00	0.00	
5,644.9	0.00	90.01	5,625.6	343.2	-239.3	12.00	-12.00	0.00	180.00	
5,894.9	0.00	90.01	5,875.6	343.2	-239.3	0.00	0.00	0.00	90.01	
6,650.9	90.72	90.01	6,353.0	343.2	244.2	12.00	12.00	0.00	90.01	AEF 33-4956CH2 L
16,198.8	90.72	90.01	6,233.0	341.8	9,791.3	0.00	0.00	0.00	0.00	AEF 33-4956CH2 F

Bill Barrett Corp

Planning Report

Database:	Compass	Local Co-ordinate Reference:	Well Anschutz Equus Farms 4-62-33-4956CH2
Company:	BILL BARRETT CORP	TVD Reference:	KB @ 4696.0ft (Original Well Elev)
Project:	WELD COUNTY, COLORADO	MD Reference:	KB @ 4696.0ft (Original Well Elev)
Site:	Anschutz Equus Farms 4-62-33_34 S2S2 Pad	North Reference:	True
Well:	Anschutz Equus Farms 4-62-33-4956CH2	Survey Calculation Method:	Minimum Curvature
Wellbore:	Wellbore #1		
Design:	Design #1		

Planned Survey										
Measured Depth (ft)	Inclination (°)	Azimuth (°)	Vertical Depth (ft)	+N/-S (ft)	+E/-W (ft)	Vertical Section (ft)	Dogleg Rate (°/100ft)	Build Rate (°/100ft)	Turn Rate (°/100ft)	
0.0	0.00	0.00	0.0	0.0	0.0	0.0	0.00	0.00	0.00	
100.0	0.00	0.00	100.0	0.0	0.0	0.0	0.00	0.00	0.00	
200.0	0.00	0.00	200.0	0.0	0.0	0.0	0.00	0.00	0.00	
300.0	0.00	0.00	300.0	0.0	0.0	0.0	0.00	0.00	0.00	
400.0	0.00	0.00	400.0	0.0	0.0	0.0	0.00	0.00	0.00	
500.0	0.00	0.00	500.0	0.0	0.0	0.0	0.00	0.00	0.00	
600.0	0.00	0.00	600.0	0.0	0.0	0.0	0.00	0.00	0.00	
700.0	0.00	0.00	700.0	0.0	0.0	0.0	0.00	0.00	0.00	
800.0	0.00	0.00	800.0	0.0	0.0	0.0	0.00	0.00	0.00	
900.0	0.00	0.00	900.0	0.0	0.0	0.0	0.00	0.00	0.00	
1,000.0	0.00	0.00	1,000.0	0.0	0.0	0.0	0.00	0.00	0.00	
1,100.0	2.00	325.12	1,100.0	1.4	-1.0	-0.9	2.00	2.00	0.00	
1,200.0	4.00	325.12	1,199.8	5.7	-4.0	-3.8	2.00	2.00	0.00	
1,267.4	5.35	325.12	1,267.0	10.2	-7.1	-6.8	2.00	2.00	0.00	
1,300.0	5.35	325.12	1,299.5	12.7	-8.9	-8.4	0.00	0.00	0.00	
1,400.0	5.35	325.12	1,399.0	20.4	-14.2	-13.5	0.00	0.00	0.00	
1,500.0	5.35	325.12	1,498.6	28.0	-19.5	-18.5	0.00	0.00	0.00	
1,600.0	5.35	325.12	1,598.2	35.7	-24.9	-23.6	0.00	0.00	0.00	
1,700.0	5.35	325.12	1,697.7	43.3	-30.2	-28.7	0.00	0.00	0.00	
1,800.0	5.35	325.12	1,797.3	51.0	-35.5	-33.7	0.00	0.00	0.00	
1,900.0	5.35	325.12	1,896.9	58.6	-40.9	-38.8	0.00	0.00	0.00	
2,000.0	5.35	325.12	1,996.4	66.2	-46.2	-43.8	0.00	0.00	0.00	
2,100.0	5.35	325.12	2,096.0	73.9	-51.5	-48.9	0.00	0.00	0.00	
2,200.0	5.35	325.12	2,195.6	81.5	-56.8	-54.0	0.00	0.00	0.00	
2,300.0	5.35	325.12	2,295.1	89.2	-62.2	-59.0	0.00	0.00	0.00	
2,400.0	5.35	325.12	2,394.7	96.8	-67.5	-64.1	0.00	0.00	0.00	
2,500.0	5.35	325.12	2,494.2	104.5	-72.8	-69.1	0.00	0.00	0.00	
2,600.0	5.35	325.12	2,593.8	112.1	-78.2	-74.2	0.00	0.00	0.00	
2,700.0	5.35	325.12	2,693.4	119.8	-83.5	-79.3	0.00	0.00	0.00	
2,800.0	5.35	325.12	2,792.9	127.4	-88.8	-84.3	0.00	0.00	0.00	
2,900.0	5.35	325.12	2,892.5	135.1	-94.2	-89.4	0.00	0.00	0.00	
3,000.0	5.35	325.12	2,992.1	142.7	-99.5	-94.4	0.00	0.00	0.00	
3,100.0	5.35	325.12	3,091.6	150.4	-104.8	-99.5	0.00	0.00	0.00	
3,200.0	5.35	325.12	3,191.2	158.0	-110.1	-104.6	0.00	0.00	0.00	
3,300.0	5.35	325.12	3,290.8	165.6	-115.5	-109.6	0.00	0.00	0.00	
3,400.0	5.35	325.12	3,390.3	173.3	-120.8	-114.7	0.00	0.00	0.00	
3,500.0	5.35	325.12	3,489.9	180.9	-126.1	-119.7	0.00	0.00	0.00	
3,600.0	5.35	325.12	3,589.5	188.6	-131.5	-124.8	0.00	0.00	0.00	
3,700.0	5.35	325.12	3,689.0	196.2	-136.8	-129.9	0.00	0.00	0.00	
3,800.0	5.35	325.12	3,788.6	203.9	-142.1	-134.9	0.00	0.00	0.00	
3,900.0	5.35	325.12	3,888.2	211.5	-147.5	-140.0	0.00	0.00	0.00	
4,000.0	5.35	325.12	3,987.7	219.2	-152.8	-145.1	0.00	0.00	0.00	
4,100.0	5.35	325.12	4,087.3	226.8	-158.1	-150.1	0.00	0.00	0.00	
4,200.0	5.35	325.12	4,186.8	234.5	-163.5	-155.2	0.00	0.00	0.00	
4,300.0	5.35	325.12	4,286.4	242.1	-168.8	-160.2	0.00	0.00	0.00	
4,400.0	5.35	325.12	4,386.0	249.8	-174.1	-165.3	0.00	0.00	0.00	
4,500.0	5.35	325.12	4,485.5	257.4	-179.4	-170.4	0.00	0.00	0.00	
4,600.0	5.35	325.12	4,585.1	265.0	-184.8	-175.4	0.00	0.00	0.00	
4,700.0	5.35	325.12	4,684.7	272.7	-190.1	-180.5	0.00	0.00	0.00	
4,800.0	5.35	325.12	4,784.2	280.3	-195.4	-185.5	0.00	0.00	0.00	
4,900.0	5.35	325.12	4,883.8	288.0	-200.8	-190.6	0.00	0.00	0.00	
5,000.0	5.35	325.12	4,983.4	295.6	-206.1	-195.7	0.00	0.00	0.00	
5,100.0	5.35	325.12	5,082.9	303.3	-211.4	-200.7	0.00	0.00	0.00	

Bill Barrett Corp

Planning Report

Database:	Compass	Local Co-ordinate Reference:	Well Anschutz Equus Farms 4-62-33-4956CH2
Company:	BILL BARRETT CORP	TVD Reference:	KB @ 4696.0ft (Original Well Elev)
Project:	WELD COUNTY, COLORADO	MD Reference:	KB @ 4696.0ft (Original Well Elev)
Site:	Anschutz Equus Farms 4-62-33_34 S2S2 Pad	North Reference:	True
Well:	Anschutz Equus Farms 4-62-33-4956CH2	Survey Calculation Method:	Minimum Curvature
Wellbore:	Wellbore #1		
Design:	Design #1		

Planned Survey										
Measured Depth (ft)	Inclination (°)	Azimuth (°)	Vertical Depth (ft)	+N/-S (ft)	+E/-W (ft)	Vertical Section (ft)	Dogleg Rate (°/100ft)	Build Rate (°/100ft)	Turn Rate (°/100ft)	
5,192.1	5.35	325.12	5,174.6	310.3	-216.3	-205.4	0.00	0.00	0.00	
Shannon										
5,200.0	5.35	325.12	5,182.5	310.9	-216.8	-205.8	0.00	0.00	0.00	
5,300.0	5.35	325.12	5,282.1	318.6	-222.1	-210.8	0.00	0.00	0.00	
5,400.0	5.35	325.12	5,381.6	326.2	-227.4	-215.9	0.00	0.00	0.00	
5,500.0	5.35	325.12	5,481.2	333.9	-232.7	-221.0	0.00	0.00	0.00	
5,600.0	5.35	325.12	5,580.8	341.5	-238.1	-226.0	0.00	0.00	0.00	
5,600.3	5.35	325.12	5,581.1	341.5	-238.1	-226.0	0.00	0.00	0.00	
5,644.9	0.00	90.01	5,625.6	343.2	-239.3	-227.2	12.00	-12.00	0.00	
5,700.0	0.00	90.01	5,680.7	343.2	-239.3	-227.2	0.00	0.00	0.00	
5,800.0	0.00	90.01	5,780.7	343.2	-239.3	-227.2	0.00	0.00	0.00	
5,894.9	0.00	90.01	5,875.6	343.2	-239.3	-227.2	0.00	0.00	0.00	
5,900.0	0.61	90.01	5,880.7	343.2	-239.3	-227.1	12.00	12.00	0.00	
6,000.0	12.61	90.01	5,979.8	343.2	-227.8	-215.6	12.00	12.00	0.00	
6,071.8	21.23	90.01	6,048.5	343.2	-206.9	-194.8	12.00	12.00	0.00	
Sharon Springs										
6,100.0	24.61	90.01	6,074.4	343.2	-195.9	-183.8	12.00	12.00	0.00	
6,184.6	34.77	90.01	6,147.9	343.2	-154.0	-142.0	12.00	12.00	0.00	
Niobrara										
6,200.0	36.61	90.01	6,160.3	343.2	-145.1	-133.0	12.00	12.00	0.00	
6,300.0	48.61	90.01	6,233.8	343.2	-77.5	-65.5	12.00	12.00	0.00	
6,400.0	60.61	90.01	6,291.6	343.2	3.9	15.9	12.00	12.00	0.00	
6,495.6	72.09	90.01	6,329.9	343.2	91.4	103.3	12.00	12.00	0.00	
Top C Target										
6,500.0	72.61	90.01	6,331.2	343.2	95.5	107.4	12.00	12.00	0.00	
6,600.0	84.61	90.01	6,350.9	343.2	193.4	205.2	12.00	12.00	0.00	
6,650.9	90.72	90.01	6,353.0	343.2	244.2	256.0	12.00	12.00	0.00	
7" Csg - AEF 33-4956CH2 LP										
6,700.0	90.72	90.01	6,352.4	343.2	293.3	305.1	0.00	0.00	0.00	
6,800.0	90.72	90.01	6,351.1	343.1	393.3	405.0	0.00	0.00	0.00	
6,900.0	90.72	90.01	6,349.9	343.1	493.3	504.9	0.00	0.00	0.00	
7,000.0	90.72	90.01	6,348.6	343.1	593.3	604.9	0.00	0.00	0.00	
7,100.0	90.72	90.01	6,347.4	343.1	693.3	704.8	0.00	0.00	0.00	
7,200.0	90.72	90.01	6,346.1	343.1	793.3	804.7	0.00	0.00	0.00	
7,300.0	90.72	90.01	6,344.8	343.1	893.2	904.7	0.00	0.00	0.00	
7,400.0	90.72	90.01	6,343.6	343.1	993.2	1,004.6	0.00	0.00	0.00	
7,500.0	90.72	90.01	6,342.3	343.0	1,093.2	1,104.5	0.00	0.00	0.00	
7,600.0	90.72	90.01	6,341.1	343.0	1,193.2	1,204.5	0.00	0.00	0.00	
7,700.0	90.72	90.01	6,339.8	343.0	1,293.2	1,304.4	0.00	0.00	0.00	
7,800.0	90.72	90.01	6,338.6	343.0	1,393.2	1,404.3	0.00	0.00	0.00	
7,900.0	90.72	90.01	6,337.3	343.0	1,493.2	1,504.3	0.00	0.00	0.00	
8,000.0	90.72	90.01	6,336.0	343.0	1,593.2	1,604.2	0.00	0.00	0.00	
8,100.0	90.72	90.01	6,334.8	343.0	1,693.2	1,704.1	0.00	0.00	0.00	
8,200.0	90.72	90.01	6,333.5	343.0	1,793.2	1,804.0	0.00	0.00	0.00	
8,300.0	90.72	90.01	6,332.3	342.9	1,893.2	1,904.0	0.00	0.00	0.00	
8,400.0	90.72	90.01	6,331.0	342.9	1,993.2	2,003.9	0.00	0.00	0.00	
8,500.0	90.72	90.01	6,329.8	342.9	2,093.1	2,103.8	0.00	0.00	0.00	
8,600.0	90.72	90.01	6,328.5	342.9	2,193.1	2,203.8	0.00	0.00	0.00	
8,700.0	90.72	90.01	6,327.2	342.9	2,293.1	2,303.7	0.00	0.00	0.00	
8,800.0	90.72	90.01	6,326.0	342.9	2,393.1	2,403.6	0.00	0.00	0.00	
8,900.0	90.72	90.01	6,324.7	342.9	2,493.1	2,503.6	0.00	0.00	0.00	
9,000.0	90.72	90.01	6,323.5	342.8	2,593.1	2,603.5	0.00	0.00	0.00	

Bill Barrett Corp

Planning Report

Database:	Compass	Local Co-ordinate Reference:	Well Anschutz Equus Farms 4-62-33-4956CH2
Company:	BILL BARRETT CORP	TVD Reference:	KB @ 4696.0ft (Original Well Elev)
Project:	WELD COUNTY, COLORADO	MD Reference:	KB @ 4696.0ft (Original Well Elev)
Site:	Anschutz Equus Farms 4-62-33_34 S2S2 Pad	North Reference:	True
Well:	Anschutz Equus Farms 4-62-33-4956CH2	Survey Calculation Method:	Minimum Curvature
Wellbore:	Wellbore #1		
Design:	Design #1		

Planned Survey										
Measured Depth (ft)	Inclination (°)	Azimuth (°)	Vertical Depth (ft)	+N/-S (ft)	+E/-W (ft)	Vertical Section (ft)	Dogleg Rate (°/100ft)	Build Rate (°/100ft)	Turn Rate (°/100ft)	
9,100.0	90.72	90.01	6,322.2	342.8	2,693.1	2,703.4	0.00	0.00	0.00	
9,200.0	90.72	90.01	6,321.0	342.8	2,793.1	2,803.4	0.00	0.00	0.00	
9,300.0	90.72	90.01	6,319.7	342.8	2,893.1	2,903.3	0.00	0.00	0.00	
9,400.0	90.72	90.01	6,318.4	342.8	2,993.1	3,003.2	0.00	0.00	0.00	
9,500.0	90.72	90.01	6,317.2	342.8	3,093.1	3,103.1	0.00	0.00	0.00	
9,600.0	90.72	90.01	6,315.9	342.8	3,193.1	3,203.1	0.00	0.00	0.00	
9,700.0	90.72	90.01	6,314.7	342.7	3,293.1	3,303.0	0.00	0.00	0.00	
9,800.0	90.72	90.01	6,313.4	342.7	3,393.0	3,402.9	0.00	0.00	0.00	
9,900.0	90.72	90.01	6,312.2	342.7	3,493.0	3,502.9	0.00	0.00	0.00	
10,000.0	90.72	90.01	6,310.9	342.7	3,593.0	3,602.8	0.00	0.00	0.00	
10,100.0	90.72	90.01	6,309.7	342.7	3,693.0	3,702.7	0.00	0.00	0.00	
10,200.0	90.72	90.01	6,308.4	342.7	3,793.0	3,802.7	0.00	0.00	0.00	
10,300.0	90.72	90.01	6,307.1	342.7	3,893.0	3,902.6	0.00	0.00	0.00	
10,400.0	90.72	90.01	6,305.9	342.6	3,993.0	4,002.5	0.00	0.00	0.00	
10,500.0	90.72	90.01	6,304.6	342.6	4,093.0	4,102.5	0.00	0.00	0.00	
10,600.0	90.72	90.01	6,303.4	342.6	4,193.0	4,202.4	0.00	0.00	0.00	
10,700.0	90.72	90.01	6,302.1	342.6	4,293.0	4,302.3	0.00	0.00	0.00	
10,800.0	90.72	90.01	6,300.9	342.6	4,393.0	4,402.2	0.00	0.00	0.00	
10,900.0	90.72	90.01	6,299.6	342.6	4,493.0	4,502.2	0.00	0.00	0.00	
11,000.0	90.72	90.01	6,298.3	342.6	4,593.0	4,602.1	0.00	0.00	0.00	
11,100.0	90.72	90.01	6,297.1	342.5	4,692.9	4,702.0	0.00	0.00	0.00	
11,200.0	90.72	90.01	6,295.8	342.5	4,792.9	4,802.0	0.00	0.00	0.00	
11,300.0	90.72	90.01	6,294.6	342.5	4,892.9	4,901.9	0.00	0.00	0.00	
11,400.0	90.72	90.01	6,293.3	342.5	4,992.9	5,001.8	0.00	0.00	0.00	
11,500.0	90.72	90.01	6,292.1	342.5	5,092.9	5,101.8	0.00	0.00	0.00	
11,600.0	90.72	90.01	6,290.8	342.5	5,192.9	5,201.7	0.00	0.00	0.00	
11,700.0	90.72	90.01	6,289.5	342.5	5,292.9	5,301.6	0.00	0.00	0.00	
11,800.0	90.72	90.01	6,288.3	342.4	5,392.9	5,401.6	0.00	0.00	0.00	
11,900.0	90.72	90.01	6,287.0	342.4	5,492.9	5,501.5	0.00	0.00	0.00	
12,000.0	90.72	90.01	6,285.8	342.4	5,592.9	5,601.4	0.00	0.00	0.00	
12,100.0	90.72	90.01	6,284.5	342.4	5,692.9	5,701.3	0.00	0.00	0.00	
12,200.0	90.72	90.01	6,283.3	342.4	5,792.9	5,801.3	0.00	0.00	0.00	
12,300.0	90.72	90.01	6,282.0	342.4	5,892.8	5,901.2	0.00	0.00	0.00	
12,400.0	90.72	90.01	6,280.7	342.4	5,992.8	6,001.1	0.00	0.00	0.00	
12,500.0	90.72	90.01	6,279.5	342.3	6,092.8	6,101.1	0.00	0.00	0.00	
12,600.0	90.72	90.01	6,278.2	342.3	6,192.8	6,201.0	0.00	0.00	0.00	
12,700.0	90.72	90.01	6,277.0	342.3	6,292.8	6,300.9	0.00	0.00	0.00	
12,800.0	90.72	90.01	6,275.7	342.3	6,392.8	6,400.9	0.00	0.00	0.00	
12,900.0	90.72	90.01	6,274.5	342.3	6,492.8	6,500.8	0.00	0.00	0.00	
13,000.0	90.72	90.01	6,273.2	342.3	6,592.8	6,600.7	0.00	0.00	0.00	
13,100.0	90.72	90.01	6,271.9	342.3	6,692.8	6,700.7	0.00	0.00	0.00	
13,200.0	90.72	90.01	6,270.7	342.2	6,792.8	6,800.6	0.00	0.00	0.00	
13,300.0	90.72	90.01	6,269.4	342.2	6,892.8	6,900.5	0.00	0.00	0.00	
13,400.0	90.72	90.01	6,268.2	342.2	6,992.8	7,000.4	0.00	0.00	0.00	
13,500.0	90.72	90.01	6,266.9	342.2	7,092.8	7,100.4	0.00	0.00	0.00	
13,600.0	90.72	90.01	6,265.7	342.2	7,192.7	7,200.3	0.00	0.00	0.00	
13,700.0	90.72	90.01	6,264.4	342.2	7,292.7	7,300.2	0.00	0.00	0.00	
13,800.0	90.72	90.01	6,263.1	342.2	7,392.7	7,400.2	0.00	0.00	0.00	
13,900.0	90.72	90.01	6,261.9	342.1	7,492.7	7,500.1	0.00	0.00	0.00	
14,000.0	90.72	90.01	6,260.6	342.1	7,592.7	7,600.0	0.00	0.00	0.00	
14,100.0	90.72	90.01	6,259.4	342.1	7,692.7	7,700.0	0.00	0.00	0.00	
14,200.0	90.72	90.01	6,258.1	342.1	7,792.7	7,799.9	0.00	0.00	0.00	
14,300.0	90.72	90.01	6,256.9	342.1	7,892.7	7,899.8	0.00	0.00	0.00	

Bill Barrett Corp

Planning Report

Database:	Compass	Local Co-ordinate Reference:	Well Anschutz Equus Farms 4-62-33-4956CH2
Company:	BILL BARRETT CORP	TVD Reference:	KB @ 4696.0ft (Original Well Elev)
Project:	WELD COUNTY, COLORADO	MD Reference:	KB @ 4696.0ft (Original Well Elev)
Site:	Anschutz Equus Farms 4-62-33_34 S2S2 Pad	North Reference:	True
Well:	Anschutz Equus Farms 4-62-33-4956CH2	Survey Calculation Method:	Minimum Curvature
Wellbore:	Wellbore #1		
Design:	Design #1		

Planned Survey										
Measured Depth (ft)	Inclination (°)	Azimuth (°)	Vertical Depth (ft)	+N/-S (ft)	+E/-W (ft)	Vertical Section (ft)	Dogleg Rate (°/100ft)	Build Rate (°/100ft)	Turn Rate (°/100ft)	
14,400.0	90.72	90.01	6,255.6	342.1	7,992.7	7,999.8	0.00	0.00	0.00	
14,500.0	90.72	90.01	6,254.4	342.1	8,092.7	8,099.7	0.00	0.00	0.00	
14,600.0	90.72	90.01	6,253.1	342.1	8,192.7	8,199.6	0.00	0.00	0.00	
14,700.0	90.72	90.01	6,251.8	342.0	8,292.7	8,299.5	0.00	0.00	0.00	
14,800.0	90.72	90.01	6,250.6	342.0	8,392.7	8,399.5	0.00	0.00	0.00	
14,900.0	90.72	90.01	6,249.3	342.0	8,492.6	8,499.4	0.00	0.00	0.00	
15,000.0	90.72	90.01	6,248.1	342.0	8,592.6	8,599.3	0.00	0.00	0.00	
15,100.0	90.72	90.01	6,246.8	342.0	8,692.6	8,699.3	0.00	0.00	0.00	
15,200.0	90.72	90.01	6,245.6	342.0	8,792.6	8,799.2	0.00	0.00	0.00	
15,300.0	90.72	90.01	6,244.3	342.0	8,892.6	8,899.1	0.00	0.00	0.00	
15,400.0	90.72	90.01	6,243.0	341.9	8,992.6	8,999.1	0.00	0.00	0.00	
15,500.0	90.72	90.01	6,241.8	341.9	9,092.6	9,099.0	0.00	0.00	0.00	
15,600.0	90.72	90.01	6,240.5	341.9	9,192.6	9,198.9	0.00	0.00	0.00	
15,700.0	90.72	90.01	6,239.3	341.9	9,292.6	9,298.9	0.00	0.00	0.00	
15,800.0	90.72	90.01	6,238.0	341.9	9,392.6	9,398.8	0.00	0.00	0.00	
15,900.0	90.72	90.01	6,236.8	341.9	9,492.6	9,498.7	0.00	0.00	0.00	
16,000.0	90.72	90.01	6,235.5	341.9	9,592.6	9,598.6	0.00	0.00	0.00	
16,100.0	90.72	90.01	6,234.2	341.8	9,692.5	9,698.6	0.00	0.00	0.00	
16,198.8	90.72	90.01	6,233.0	341.8	9,791.3	9,797.3	0.00	0.00	0.00	
AEF 33-4956CH2 PBHL										

Casing Points					
Measured Depth (ft)	Vertical Depth (ft)	Name	Casing Diameter (")	Hole Diameter (")	
6,650.9	6,353.0	7" Csg	7	8-3/4	

Formations						
Measured Depth (ft)	Vertical Depth (ft)	Name	Lithology	Dip (°)	Dip Direction (°)	
	0.0	Fox Hills Base		-0.69	90.00	
5,192.1	5,172.0	Shannon		-0.69	90.00	
6,071.8	6,046.0	Sharon Springs		-0.69	90.00	
6,184.6	6,146.0	Niobrara		-0.69	90.00	
6,495.6	6,331.0	Top C Target		-0.69	90.00	
	6,361.0	Base C Target		-0.69	90.00	