

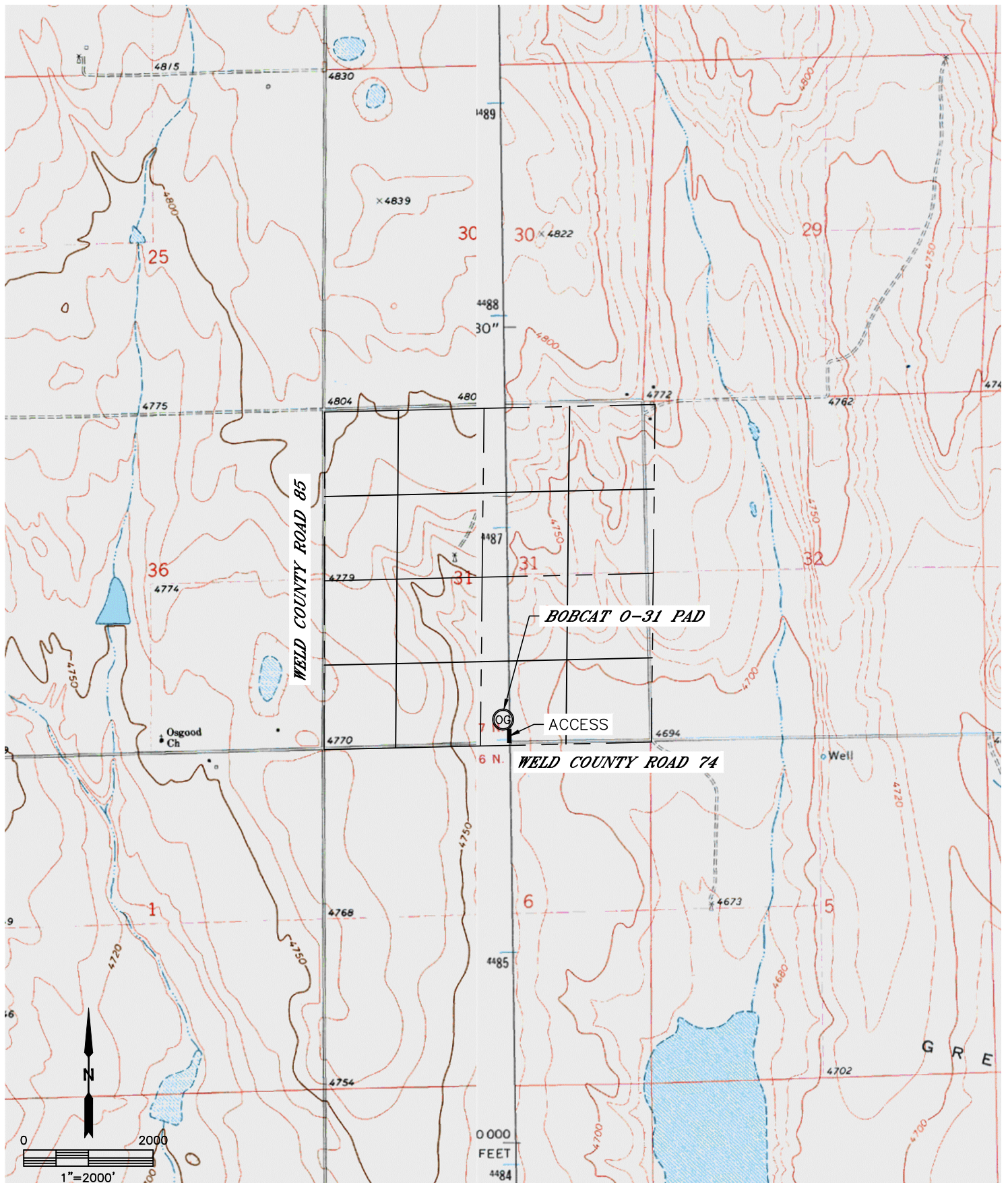


Lat40°, Inc. 1635 Foxtrail Drive, Suite 325 Loveland, CO 970-776-3321

ACCESS ROAD MAP

BOBCAT 0-31 PAD

SECTION: 31
TOWNSHIP: 7N
RANGE: 61W



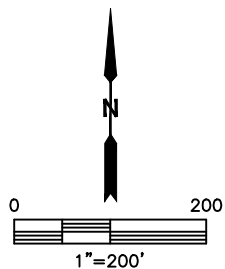
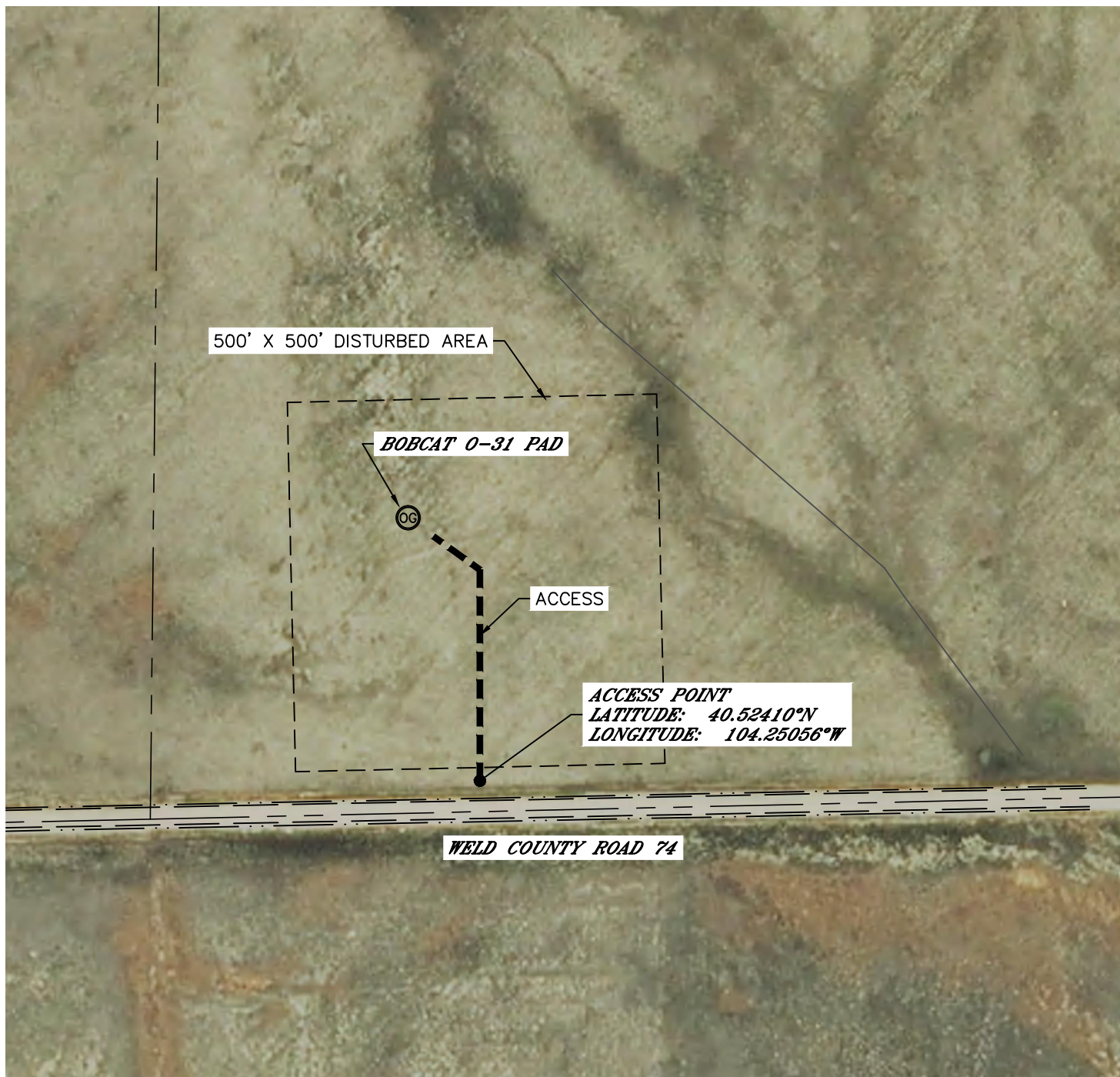


Lat40°, Inc. 1635 Foxtrail Drive, Suite 325 Loveland, CO 970-776-3321

ACCESS ROAD MAP

BOBCAT 0-31 PAD

SECTION: 31
TOWNSHIP: 7N
RANGE: 61W





Lat40°, Inc. 1635 Foxtrail Drive, Suite 325 Loveland, CO 970-776-3321

ACCESS PICTURES

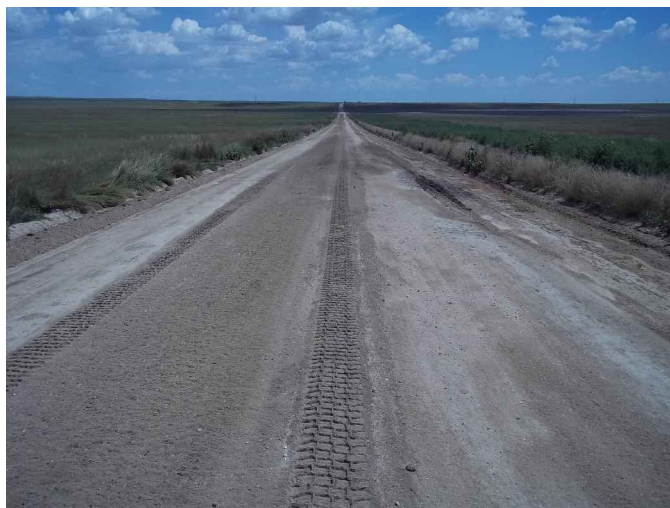
BOBCAT 0-31 PAD

SECTION: 31
TOWNSHIP: 7N
RANGE: 61W

DATE: 8/1/2014



VIEW WEST ON (CR 74)



VIEW EAST ON (CR 74)



VIEW NORTH



Lat40°, Inc. 1635 Foxtrail Drive, Suite 325 Loveland, CO 970-776-3321

ACCESS ROAD MAP

BOBCAT O-31 PAD

SECTION: 31
TOWNSHIP: 7N
RANGE: 61W

EXISTING WELLS:
NONE

PROPOSED WELLS:
BOBCAT O-K-31HNB

DRIVING DIRECTIONS TO BOBCAT O-31 PAD
FROM THE INTERSECTION OF COUNTY ROAD 74 AND COUNTY ROAD 85, DRIVE EAST ON COUNTY ROAD 74
FOR 0.5 MILES TO THE ACCESS ROAD. TURN NORTH ON ACCESS ROAD TO THE
BOBCAT O-31 PAD SITE.

