

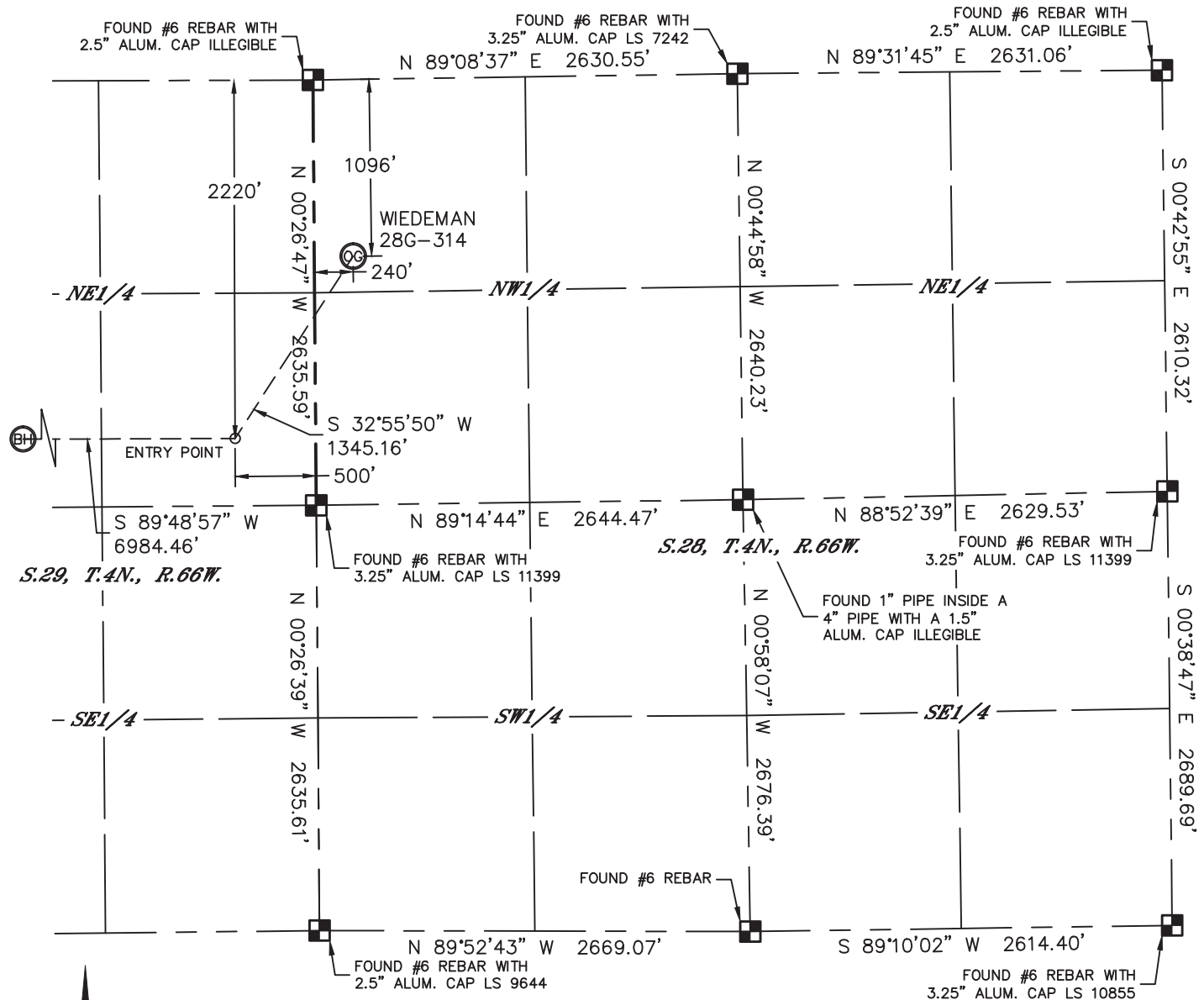


Lat40°, Inc. 1635 Foxtrail Drive, Suite 325 Loveland, CO 970-776-3321

# WELL LOCATION CERTIFICATE

THIS MAP DOES NOT REPRESENT A BOUNDARY SURVEY

SECTION: 28  
TOWNSHIP: 4N  
RANGE: 66W



In accordance with a request from Mac Neumann with PDC ENERGY Lat40°, Inc. has determined the surface location of the WIEDEMAN 28G-314 to be 1096' from the NORTH line and 240' from the WEST line as measured at right angles from the section lines of Section 28, Township 4 North, Range 66 West and the bottom hole to be 2220' from the NORTH line and 2165' from the EAST line as measured at right angles from the section lines of Section 30, Township 4 North, Range 66 West of the Sixth Principal Meridian, County of Weld, State of Colorado.

I hereby state that this Well Location Certificate was prepared by me, or under my direct supervision, that the fieldwork was completed on 6/25/2014, for and on behalf of PDC ENERGY. That this is not a Land Survey Plat or an Improvement Survey Plat, and that it is not to be relied upon for establishment of fence, building, or other future improvement lines.

**SURFACE LOCATION**  
LAT: 40.28684°N  
LONG: 104.79105°W  
PDOP: 1.8  
ELEV: 4763'  
1/4,1/4: NWNW

**BOTTOM HOLE**  
LAT: 40.28385°N  
LONG: 104.81873°W

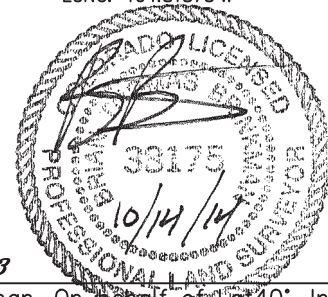
**ENTRY POINT**  
LAT: 40.28376°N  
LONG: 104.79370°W

## LEGEND

- = ALIQUOT MONUMENT AS DESCRIBED
- = CALCULATED POSITION

## SHEET 1 OF 3

Brian T. Brinkman—On behalf of Lat40°, Inc.  
Colorado Licensed Professional  
Land Surveyor No. 38175  
DATE: 10/14/2014  
PROJECT#: 2014114



- NOTE:
- 1) Bearings shown are Grid Bearings of the Colorado State Plane Coordinate System, North Zone, North American Datum 1983. The lined dimensions as contained herein are based upon the "U.S. Survey Foot."
  - 2) Ground elevations are based on an observed GPS elevation (NAVD 1988 DATUM).
  - 3) IMPROVEMENTS: See LOCATION DRAWING for all visible improvements within 500' of disturbed area.
  - 4) SURFACE USE: CROP LAND
  - 5) INSTRUMENT OPERATOR: ADAM KELLY
  - 6) NEAREST CULTURAL ITEMS:  
BUILDING: ±567' SW  
BUILDING UNIT: ±625' SW  
HIGH OCCUPANCY BUILDING UNIT: ±3376' NE  
DESIGNATED OUTSIDE ACTIVITY AREA: 5280'+  
PUBLIC ROAD: (CR 29) 214' W  
ABOVEGROUND UTILITY: 205' W  
RAILROAD: ±4328' SE  
PROPERTY LINE: 240' W

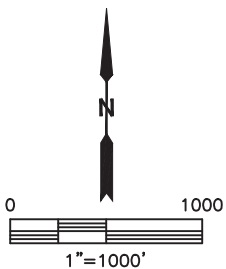
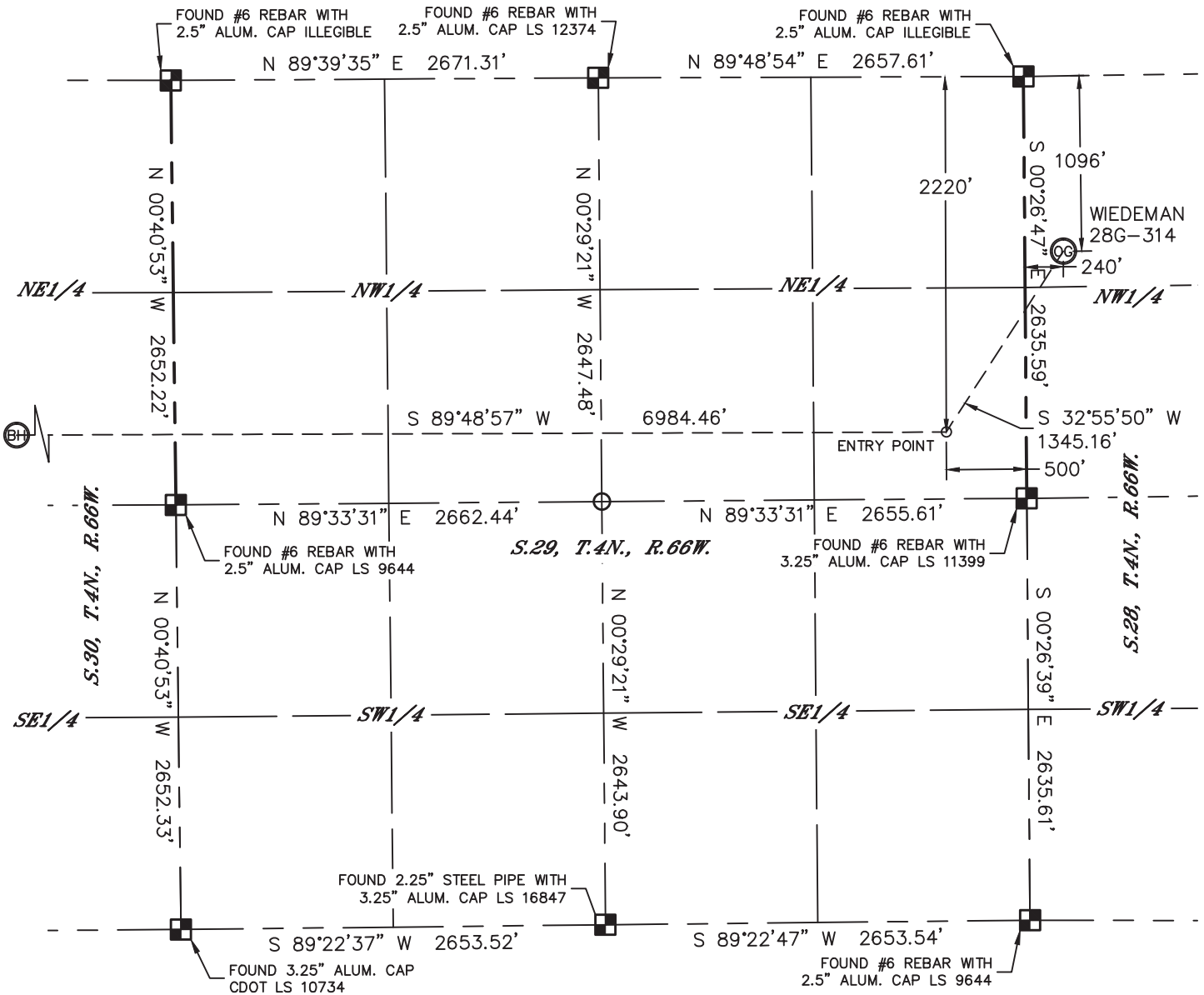


Lat40°, Inc. 1635 Foxtrail Drive, Suite 325 Loveland, CO 970-776-3321

# WELL LOCATION CERTIFICATE

THIS MAP DOES NOT REPRESENT A BOUNDARY SURVEY

SECTION: 28  
TOWNSHIP: 4N  
RANGE: 66W

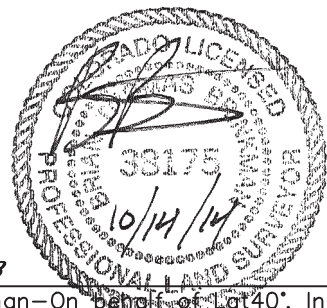


## LEGEND

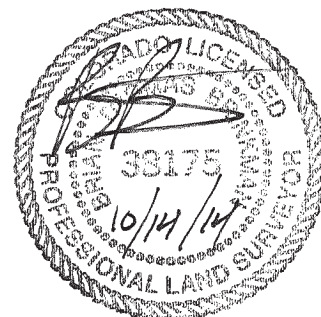
- = ALIQUOT MONUMENT AS DESCRIBED
- = CALCULATED POSITION

## SHEET 2 OF 3

Brian T. Brinkman—On behalf of Lat40°, Inc.  
Colorado Licensed Professional  
Land Surveyor No. 38175  
DATE: 10/14/2014  
PROJECT#: 2014114



DATE: 10/14/2014  
PROJECT#: 2014114



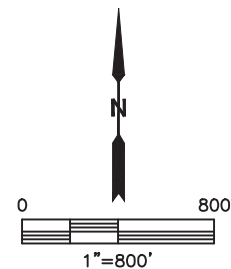
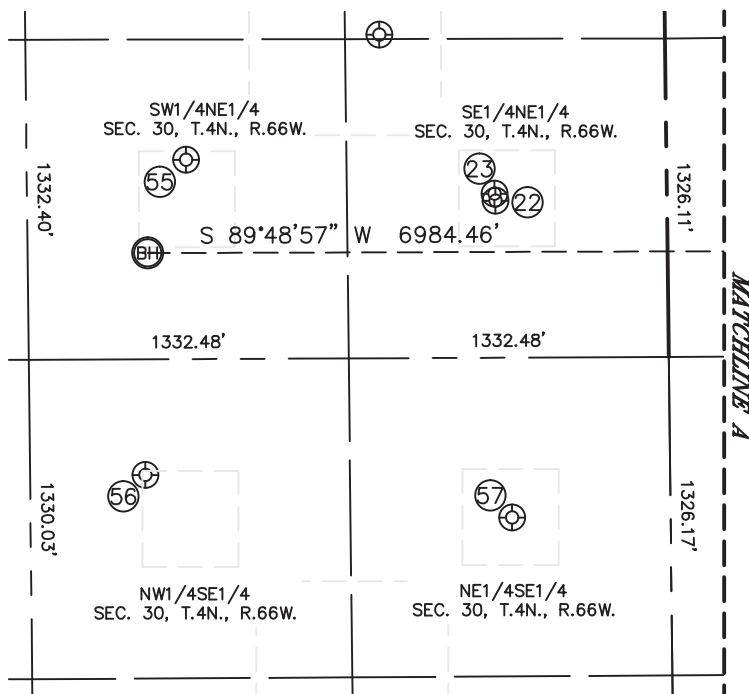
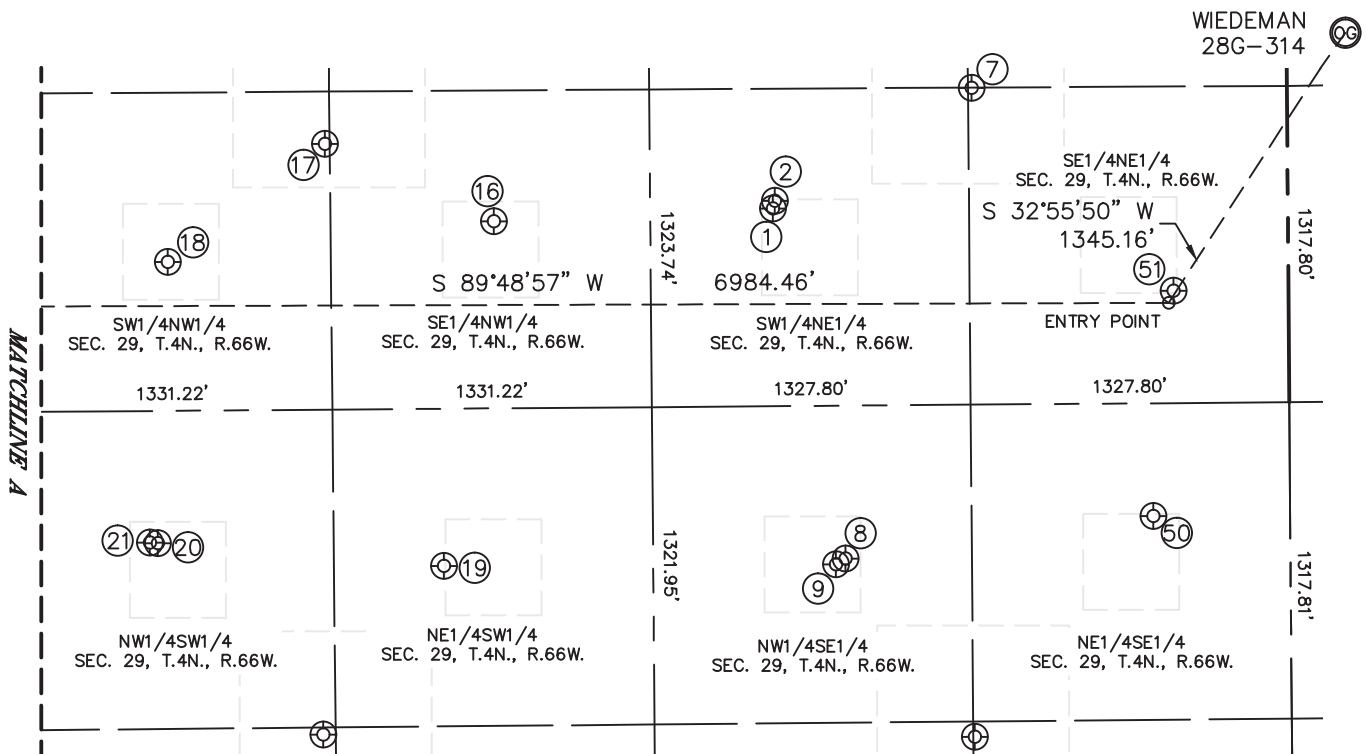


Lat40°, Inc. 1635 Foxtrail Drive, Suite 325 Loveland, CO 970-776-3321

# SITE SKETCH

WIEDEMAN 28G-314

SECTION: 28  
TOWNSHIP: 4N  
RANGE: 66W



SHEET 1 OF 2

DATE: 10/14/2014  
PROJECT#: 2014114



Lat40°, Inc. 1635 Foxtrail Drive, Suite 325 Loveland, CO 970-776-3321

# SITE SKETCH

WIEDEMAN 28G-314

SECTION: 28  
TOWNSHIP: 4N  
RANGE: 66W

WELL NO.	WELL NAME	SHL FOOTAGE				SHL LAT°	SHL LONG°	PDOP	ELEV (FT.)	1/4/1/4
1	MCLEOD 7	1821	FNL	2145	FEL	40.28487	-104.79960	2.0	4760	SWNE
2	MCLEOD 29-13	1790	FNL	2138	FEL	40.28496	-104.79957	2.0	4760	SWNE
7	MCLEOD 5	1321	FNL	1314	FEL	40.28623	-104.79662	1.9	4767	SENE
8	MCLEOD 8	2004	FSL	1854	FEL	40.28086	-104.79855	2.0	4770	NWSE
9	MCLEOD 29-1	1981	FSL	1894	FEL	40.28080	-104.79869	2.0	4771	NWSE
16	MATTIE 1	1869	FNL	2013	FWL	40.28475	-104.80376	2.0	4759	SENW
17	WIEDEMAN 6	1543	FNL	1313	FWL	40.28565	-104.80628	1.9	4753	SWNW
18	WIEDEMAN 12-29	2031	FNL	652	FWL	40.28431	-104.80864	1.9	4758	SWNW
19	WIEDEMAN 29-1	1991	FSL	1789	FWL	40.28081	-104.80455	2.3	4763	NESW
20	WIEDEMAN 29-29	2099	FSL	598	FWL	40.28110	-104.80881	2.2	4763	NWSW
21	WIEDEMAN 29-2	2102	FSL	564	FWL	40.28111	-104.80894	2.3	4763	NWSW
22	MEINING 1	2002	FNL	713	FEL	40.28441	-104.81353	2.2	4758	SENE
23	MEINING 1-30B	1972	FNL	717	FEL	40.28449	-104.81355	2.8	4758	SENE
50	MCLEOD 29-41	2167	FSL	570	FEL	40.28132	-104.79395	1.8	4766	NESE
51	MCLEOD 29-14	2171	FNL	478	FEL	40.28389	-104.79362	1.9	4766	SENE
55	LAUREN 1	1832	FNL	2000	FEL	40.28491	-104.81814	1.6	4758	SWNE
56	MEINING 30-10I6	2177	FSL	2185	FEL	40.28131	-104.81879	1.6	4763	NWSE
57	FRITZLER 1	1989	FSL	660	FEL	40.28079	-104.81332	1.3	4762	NESE

*SHEET 2 OF 2*

DATE: 7/8/2014  
PROJECT#: 2014114