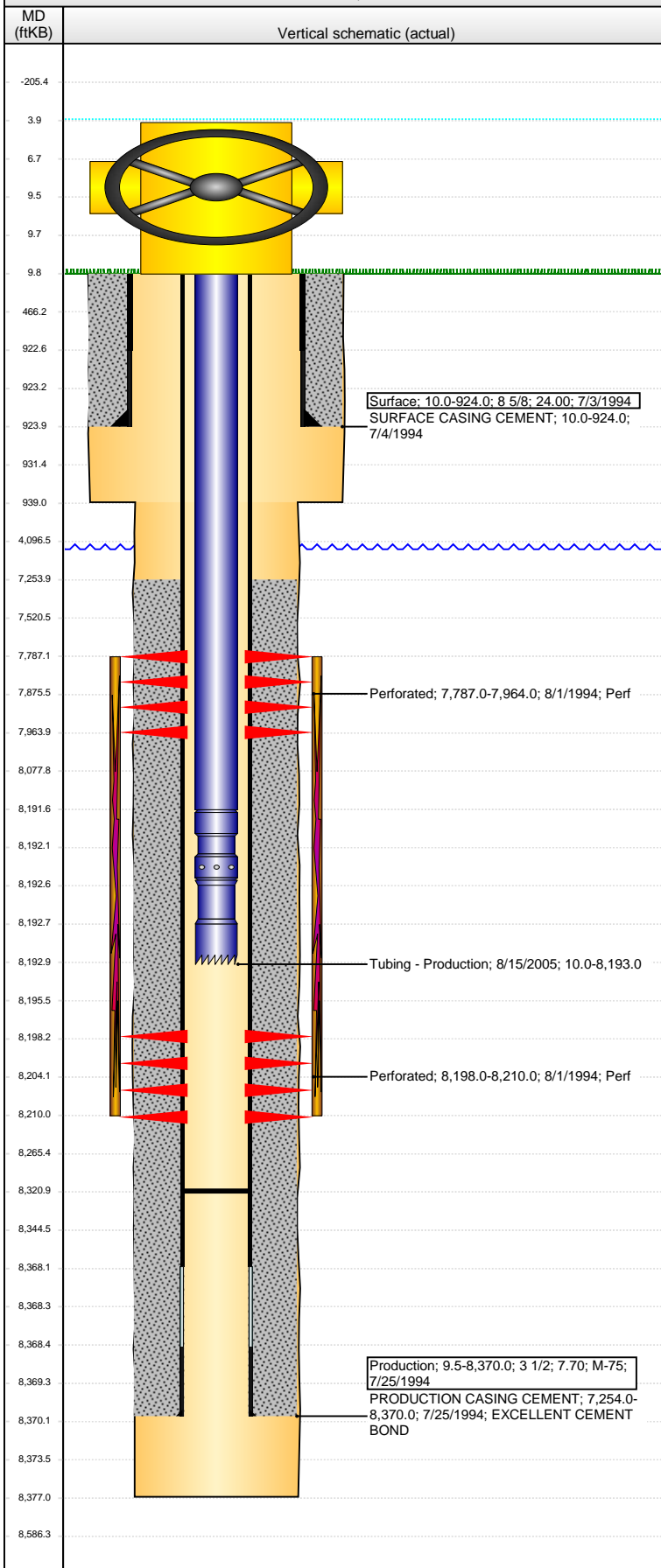


**Well Name: DOMENICO MC33-09**

VERTICAL - ORIGINAL HOLE, 10/15/2014 2:26:27 PM



## Well Header

API	Business Unit	District	Well Config
05-013-06460	DJ BASIN	15	VERTICAL
Original KB Elevation (ft)	KB - GL / MSL (ftKB)	Spud Date	P & A Date
4,836.00	10.00	7/2/1994	
Comment			

## Directions To Well

## Congressional Location

Quarter 1	Quarter 2	Quarter 3	Quarter 4	Section	Township	Twnshp N...	Range	Rng E/W Dir
		NE	SE	33	1	N	69	W

## Bottom Hole Location

North-South Distance (ft)	From N or S Line	East-West Distance (ft)	From E or W Line

## Plug Back Total Depths

Date	Depth (ftKB)	Method	Com
8/1/1994	8,321.0	TAG	DEPTH LOGGER FROM CBL

## Wellbore Sections

Section Des	Size (in)	Act Top, MD (ftKB)	Act Btm, MD (ftKB)
SURFACE	12 1/4	10.0	939.0
PRODUCTION	7 7/8	939.0	8,377.0

## Zone Statuses

Zone Name	Status Date	Status	Job
NIOBRARA-CODELL		PR	
NIOBRARA	9/9/1994	PR	DRILLING/COMPLETION - ORIGINAL, 7/2/1994 00:00
CODELL	9/9/1994	PR	DRILLING/COMPLETION - ORIGINAL, 7/2/1994 00:00

## Casing Strings

### Surface, 924.0ftKB

Casing Description	Run Date	OD (in)	Wt/Len (l...)	Grade	Top, MD (ft...)	MD (ftKB)
Surface	7/3/1994	8 5/8	24.00		10.0	924.0

### Production, 8,370.0ftKB

Casing Description	Run Date	OD (in)	Wt/Len (l...)	Grade	Top, MD (ft...)	MD (ftKB)
Production	7/25/1994	3 1/2	7.70	M-75	9.5	8,370.0

## Cement

Description	Top Depth (ftKB)	Bottom Depth (ftKB)
SURFACE CASING CEMENT	10.0	924.0
Description	Top Depth (ftKB)	Bottom Depth (ftKB)
PRODUCTION CASING CEMENT	7,254.0	8,370.0

## Tubing Components

Item Des	OD (in)	Wt (lb/ft)	Grade	Jts	Len (ft)	Btm (ftKB)	Btm (TVD) (ftKB)
Tubing	2 1/16	3.25	J-55	247	8,181.50	8,191.5	
Seal Nipple	2 1/16				1.00	8,192.5	
Notched collar	2 1/16				0.50	8,193.0	

## Perforation Data

Zone	Bnch/St g	Entered Shot Total	Top (ftKB)	Btm (ftKB)	Date
NIOBRARA, ORIGINAL HOLE		6	7,787.00	7,964.00	8/1/1994
CODELL, ORIGINAL HOLE		7	8,198.00	8,210.00	8/1/1994

## Stimulations & Treatments

Date	Zone	Primary Job Type
8/3/1994	NIOBRARA-CODELL, ORIGINAL HOLE	DRILLING/COMPLETION - ORIGINAL
Technical Result	Tech Result Details	Tech Result Note

## Comment

## Other In Hole

Run Date	Des	OD (in)	Top (ftKB)	Btm (ftKB)

## Logs

Date	Type	Top, MD (ftKB)	Btm, MD (ftKB)
7/24/1994	COMPENSATED DENSITY	7,100.0	8,380.0
7/24/1994	INDUCTION	7,100.0	8,380.0
8/1/1994	CEMENT BOND	7,100.0	8,321.0