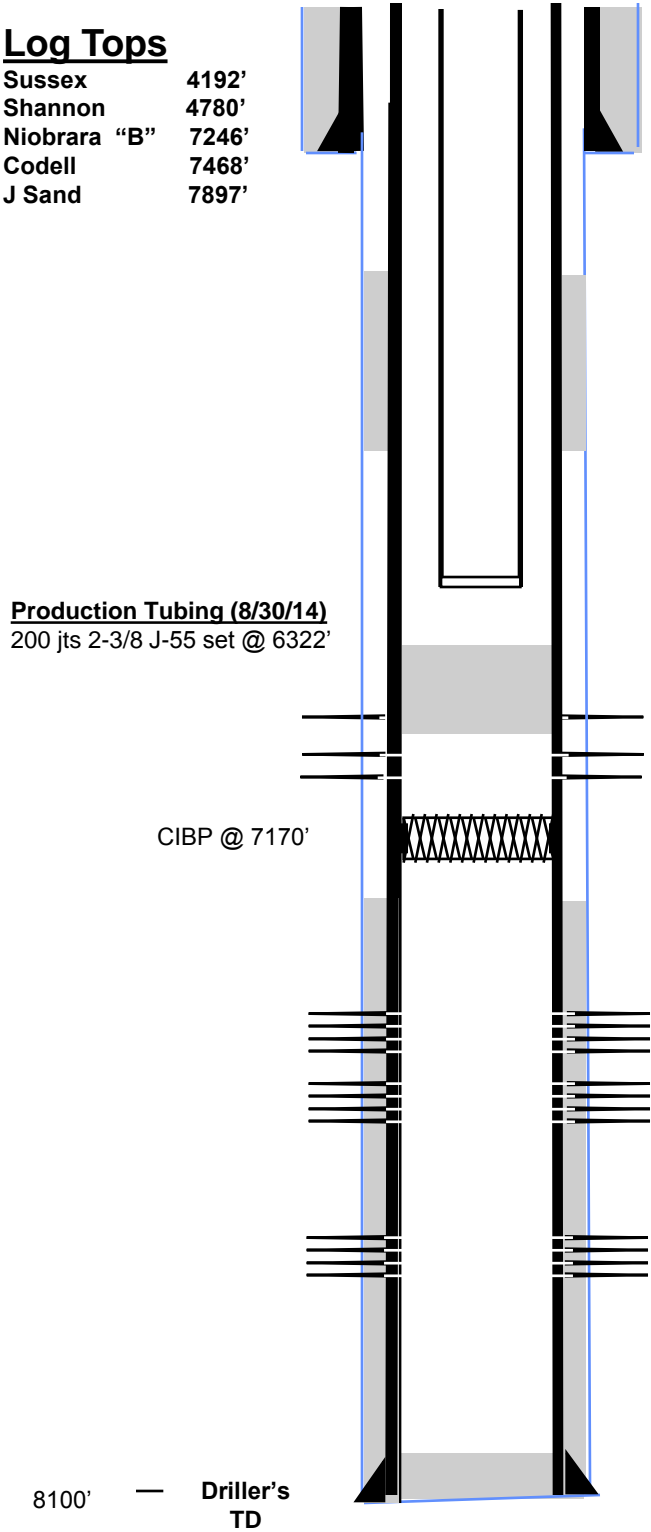


Log Tops

Sussex	4192'
Shannon	4780'
Niobrara "B"	7246'
Codell	7468'
J Sand	7897'

Production Tubing (8/30/14)
200 jts 2-3/8 J-55 set @ 6322'



Surface Casing and Cement
8 5/8" , 24#, landed @ 638',cemented with 350 sx

Main Hole
7-7/8" to TD

Production Casing and Cement
4-1/2" , 11.6#, landed @ 8067', cemented with 250 sx,
TOC 7130'

DV Tool
Set @ 5022', cemented above DV tool with 280 sx,
TOC 4250'

Annular Squeeze 3/13/08
Tagged @ 4235', pumped 100 sx cmt from 3860-3405'

Attempted cement remediation 8/2014.
Set CIBP @ 7170'. Shot squeeze holes @ 7120, 6500'
and 7035', could not establish circulation any time.
Set balanced plug (12 sx cmt) from 6520 to 6428'.
Will drill out balanced plug after offset stimulation s
completed.

Niobrara Frac 3-15-08
Perf'd the Niobrara from 7248' - 7268' @ 2 spf
Frac'd the Niobrara with 163,044 gal frac fluid and 253,460# sand.

CFP set @ 7350' 03-15-08
Drilled out on 03-26-08

Codell Frac 3-15-08
Perf'd the Codell from 7468' - 7488' @ 4 spf
Frac'd the Codell with 113,694 gal frac fluid and 253,040# sand.

CFP set @ 7600' 03-15-08
Drilled out on 03-27-08

J Sand Frac 3-15-08
Perf'd the J Sand from 7908' - 7928' @ 2 spf
Frac'd the J Sand with 164,262 gal frac fluid and 253,760# sand.