

# T7S, R96W, 6th P.M.

## Caerus Oil & Gas LLC

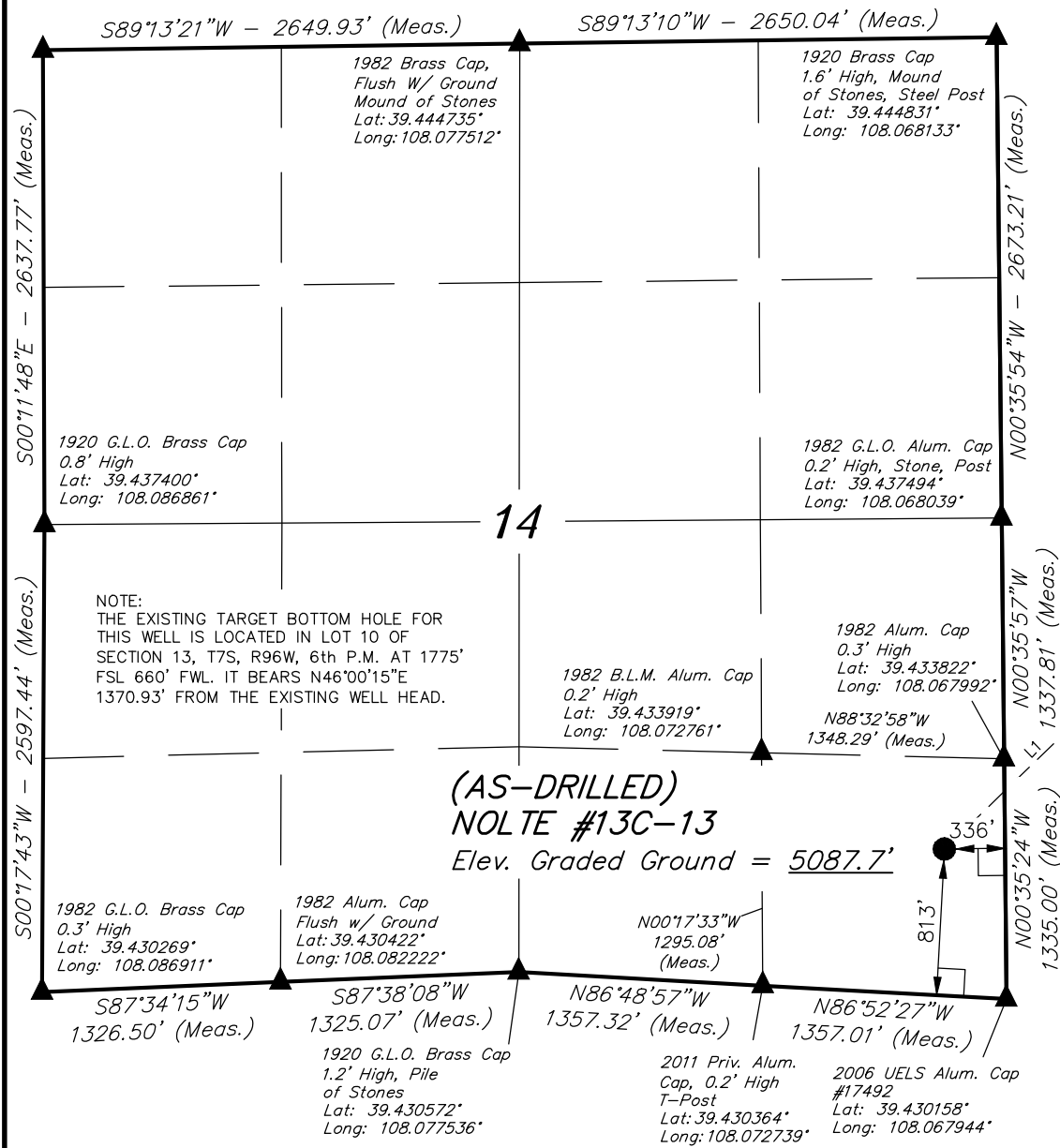
Well location, (AS-DRILLED) NOLTE #13C-13 (SURFACE LOCATION), located as shown in the SE 1/4 SE 1/4 of Section 14, T7S, R96W, 6th P.M., Garfield County, Colorado.

### BASIS OF ELEVATION

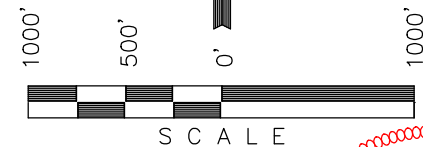
SPOT ELEVATION AT THE NORTHWEST CORNER OF SECTION 30, T5S, R95W, 6th P.M., TAKEN FROM THE FORKED GULCH QUADRANGLE, GARFIELD COUNTY, COLORADO, 7.5 MINUTE QUAD. (TOPOGRAPHIC MAP) PUBLISHED BY THE UNITED STATES DEPARTMENT OF THE INTERIOR, GEOLOGICAL SURVEY. SAID ELEVATION IS MARKED AS BEING 5966 FEET.

### BASIS OF BEARINGS

BASIS OF BEARINGS IS A G.P.S. OBSERVATION.



LINE TABLE		
LINE	DIRECTION	LENGTH
L1	N46°00'15"E	1370.93'



**CERTIFICATE**  
 THIS IS TO CERTIFY THAT THE ABOVE PLAT WAS PREPARED FROM FIELD NOTES OF ACTUAL SURVEYS MADE BY ME OR UNDER MY SUPERVISION AND THAT THE SAME ARE TRUE AND CORRECT TO THE BEST OF MY KNOWLEDGE AND BELIEF.

*Harold Marshall*  
 REGISTERED LAND SURVEYOR  
 REGISTRATION NO. 38130  
 STATE OF COLORADO 09-23-14

**UINTAH ENGINEERING & LAND SURVEYING**  
 85 SOUTH 200 EAST - VERNAL, UTAH 84078  
 (435) 789-1017

- LEGEND:**
- └─┘ = 90° SYMBOL
  - = EXISTING WELL HEAD.
  - ▲ = SECTION CORNERS LOCATED.

PDOP = 2.1

<b>NAD 83 (SURFACE LOCATION)</b>	
LATITUDE	= 39°25'56.81" (39.432447)
LONGITUDE	= 108°04'08.98" (108.069161)
<b>NAD 27 (SURFACE LOCATION)</b>	
LATITUDE	= 39°25'56.89" (39.432469)
LONGITUDE	= 108°04'06.71" (108.068531)

SCALE 1" = 1000'	DATE SURVEYED: 09-12-14	DATE DRAWN: 09-22-14
PARTY B.B. B.O. M.O.B.	REFERENCES G.L.O. PLAT	
WEATHER WARM	FILE Caerus Oil & Gas LLC	

T7S, R96W, 6th P.M.

E 1/4 Cor. Sec. 12  
1973 Brass Cap  
0.1' High, Steel Post  
Lat: 39.452428°  
Long: 108.049101°

W.C. 1984 Priv. Brass Cap  
Flush w/Ground, #18480  
Lat: 39.445840°  
Long: 108.049016°

Caerus Oil & Gas LLC

Well location, (AS-DRILLED) NOLTE #13C-13  
(TARGET BOTTOM HOLE), located as shown in LOT  
10 of Section 13, T7S, R96W, 6th P.M., Garfield  
County, Colorado.

BASIS OF ELEVATION

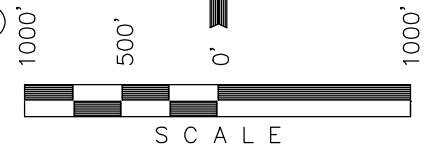
SPOT ELEVATION AT THE NORTHWEST CORNER OF SECTION  
30, T5S, R95W, 6th P.M., TAKEN FROM THE FORKED GULCH  
QUADRANGLE, GARFIELD COUNTY, COLORADO, 7.5 MINUTE  
QUAD. (TOPOGRAPHIC MAP) PUBLISHED BY THE UNITED  
STATES DEPARTMENT OF THE INTERIOR, GEOLOGICAL SURVEY.  
SAID ELEVATION IS MARKED AS BEING 5966 FEET.

BASIS OF BEARINGS

BASIS OF BEARINGS IS A G.P.S. OBSERVATION.

LEGEND:

- └─┘ = 90° SYMBOL
- = EXISTING WELL HEAD.
- ▲ = SECTION CORNERS LOCATED.
- △ = SECTION CORNERS RE-ESTABLISHED. (Not Set on Ground.)



CERTIFICATE

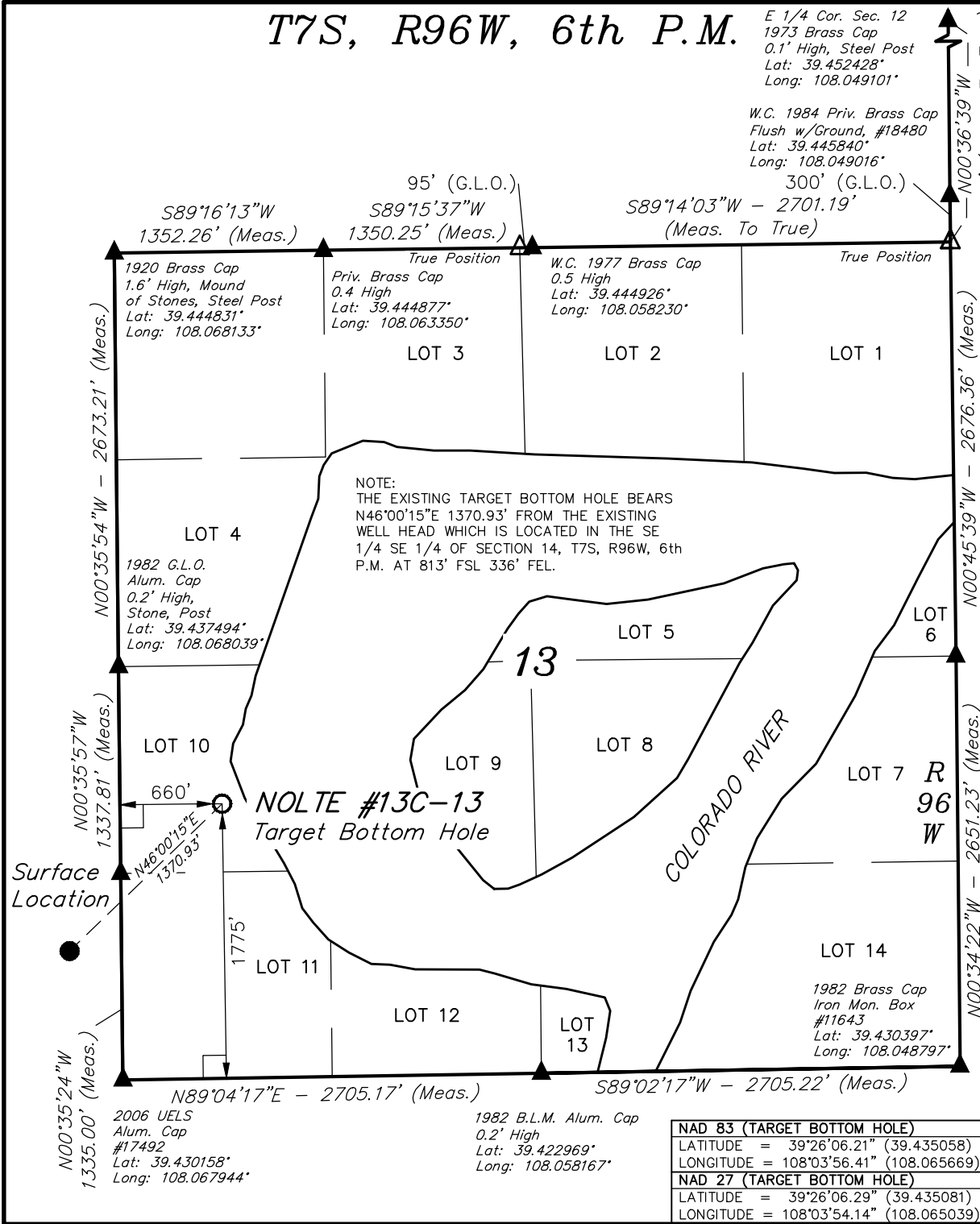
THIS IS TO CERTIFY THAT THE ABOVE PLAT WAS PREPARED FROM FIELD  
NOTES OF ACTUAL SURVEYS MADE BY ME OR UNDER MY SUPERVISION  
AND THAT THE SAME ARE TRUE AND CORRECT TO THE BEST OF MY  
KNOWLEDGE AND BELIEF.

*Harold Marshall*  
REGISTERED LAND SURVEYOR  
REGISTRATION NO. 38130  
STATE OF COLORADO 09-23-14

UINTAH ENGINEERING & LAND SURVEYING

85 SOUTH 200 EAST - VERNAL, UTAH 84078

(435) 789-1017



NAD 83 (TARGET BOTTOM HOLE)	
LATITUDE = 39°26'06.21" (39.435058)	
LONGITUDE = 108°03'56.41" (108.065669)	
NAD 27 (TARGET BOTTOM HOLE)	
LATITUDE = 39°26'06.29" (39.435081)	
LONGITUDE = 108°03'54.14" (108.065039)	

SCALE 1" = 1000'	DATE SURVEYED: 09-12-14	DATE DRAWN: 09-22-14
PARTY B.B. B.O. M.O.B.	REFERENCES G.L.O. PLAT	
WEATHER WARM	FILE Caerus Oil & Gas LLC	