

T7S, R96W, 6th P.M.

Caerus Oil & Gas LLC

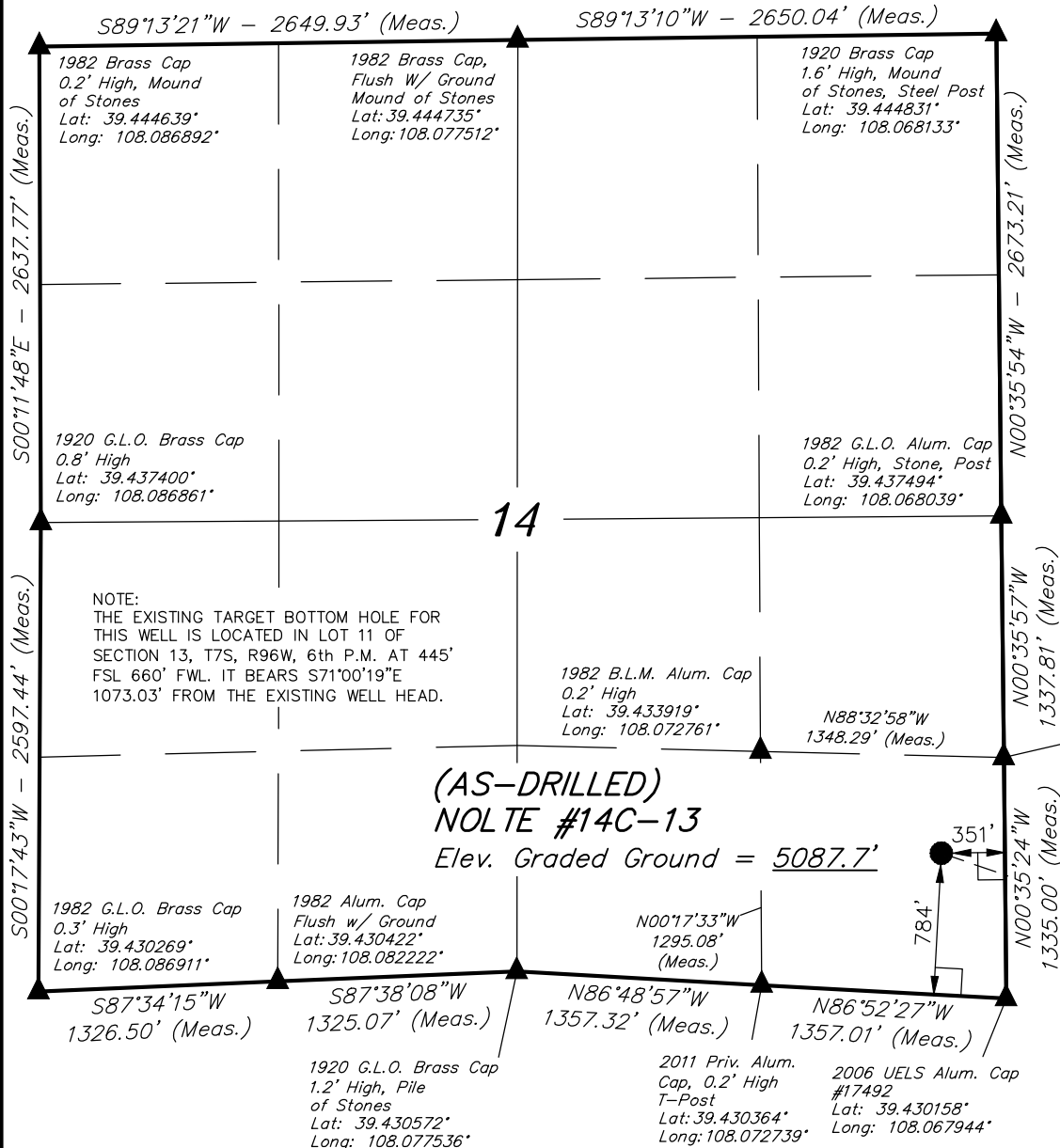
Well location, (AS-DRILLED) NOLTE #14C-13 (SURFACE LOCATION), located as shown in the SE 1/4 SE 1/4 of Section 14, T7S, R96W, 6th P.M., Garfield County, Colorado.

BASIS OF ELEVATION

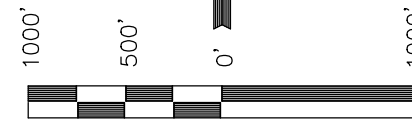
SPOT ELEVATION AT THE NORTHWEST CORNER OF SECTION 30, T5S, R95W, 6th P.M., TAKEN FROM THE FORKED GULCH QUADRANGLE, GARFIELD COUNTY, COLORADO, 7.5 MINUTE QUAD. (TOPOGRAPHIC MAP) PUBLISHED BY THE UNITED STATES DEPARTMENT OF THE INTERIOR, GEOLOGICAL SURVEY. SAID ELEVATION IS MARKED AS BEING 5966 FEET.

BASIS OF BEARINGS

BASIS OF BEARINGS IS A G.P.S. OBSERVATION.



LINE TABLE		
LINE	DIRECTION	LENGTH
L1	S71°00'19"E	1073.03'



SCALE

CERTIFICATE

THIS IS TO CERTIFY THAT THE ABOVE PLAT WAS PREPARED FROM FIELD NOTES OF ACTUAL SURVEYS MADE BY ME OR UNDER MY SUPERVISION AND THAT THE SAME ARE TRUE AND CORRECT TO THE BEST OF MY KNOWLEDGE AND BELIEF.

Harold Marshall
 REGISTERED LAND SURVEYOR
 REGISTRATION NO. 38130
 STATE OF COLORADO 09-23-14

UINTAH ENGINEERING & LAND SURVEYING
 85 SOUTH 200 EAST - VERNAL, UTAH 84078
 (435) 789-1017

- LEGEND:**
- └─┘ = 90° SYMBOL
 - = EXISTING WELL HEAD.
 - ▲ = SECTION CORNERS LOCATED.

PDOP = 2.3

NAD 83 (SURFACE LOCATION)	
LATITUDE	= 39°25'56.53" (39.432369)
LONGITUDE	= 108°04'09.17" (108.069214)
NAD 27 (SURFACE LOCATION)	
LATITUDE	= 39°25'56.61" (39.432392)
LONGITUDE	= 108°04'06.90" (108.068583)

SCALE 1" = 1000'	DATE SURVEYED: 09-12-14	DATE DRAWN: 09-22-14
PARTY B.B. B.O. M.O.B.	REFERENCES G.L.O. PLAT	
WEATHER WARM	FILE Caerus Oil & Gas LLC	

T7S, R96W, 6th P.M.

E 1/4 Cor. Sec. 12
1973 Brass Cap
0.1' High, Steel Post
Lat: 39.452428°
Long: 108.049101°

W.C. 1984 Priv. Brass Cap
Flush w/Ground, #18480
Lat: 39.445840°
Long: 108.049016°

Caerus Oil & Gas LLC

Well location, (AS-DRILLED) NOLTE #14C-13
(TARGET BOTTOM HOLE), located as shown in LOT
11 of Section 13, T7S, R96W, 6th P.M., Garfield
County, Colorado.

LINE TABLE		
LINE	DIRECTION	LENGTH
L1	S71°00'19"E	1073.03'

BASIS OF ELEVATION

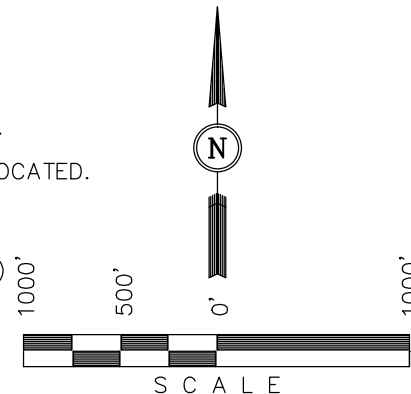
SPOT ELEVATION AT THE NORTHWEST CORNER OF SECTION
30, T5S, R95W, 6th P.M., TAKEN FROM THE FORKED GULCH
QUADRANGLE, GARFIELD COUNTY, COLORADO, 7.5 MINUTE
QUAD. (TOPOGRAPHIC MAP) PUBLISHED BY THE UNITED
STATES DEPARTMENT OF THE INTERIOR, GEOLOGICAL SURVEY.
SAID ELEVATION IS MARKED AS BEING 5966 FEET.

BASIS OF BEARINGS

BASIS OF BEARINGS IS A G.P.S. OBSERVATION.

LEGEND:

- └─┘ = 90° SYMBOL
- = EXISTING WELL HEAD.
- ▲ = SECTION CORNERS LOCATED.
- △ = SECTION CORNERS RE-ESTABLISHED. (Not Set on Ground.)



B.O.R. Brass Cap
1.4' High
Lat: 39.437672°
Long: 108.048886°

CERTIFICATE

THIS IS TO CERTIFY THAT THE ABOVE PLAT WAS PREPARED FROM FIELD
NOTES OF ACTUAL SURVEYS MADE BY ME OR UNDER MY SUPERVISION
AND THAT THE SAME ARE TRUE AND CORRECT TO THE BEST OF MY
KNOWLEDGE AND BELIEF.

Handwritten signature: Harold Marshall
REGISTERED LAND SURVEYOR
REGISTRATION NO. 38130
STATE OF COLORADO 09-23-14

UINTAH ENGINEERING & LAND SURVEYING

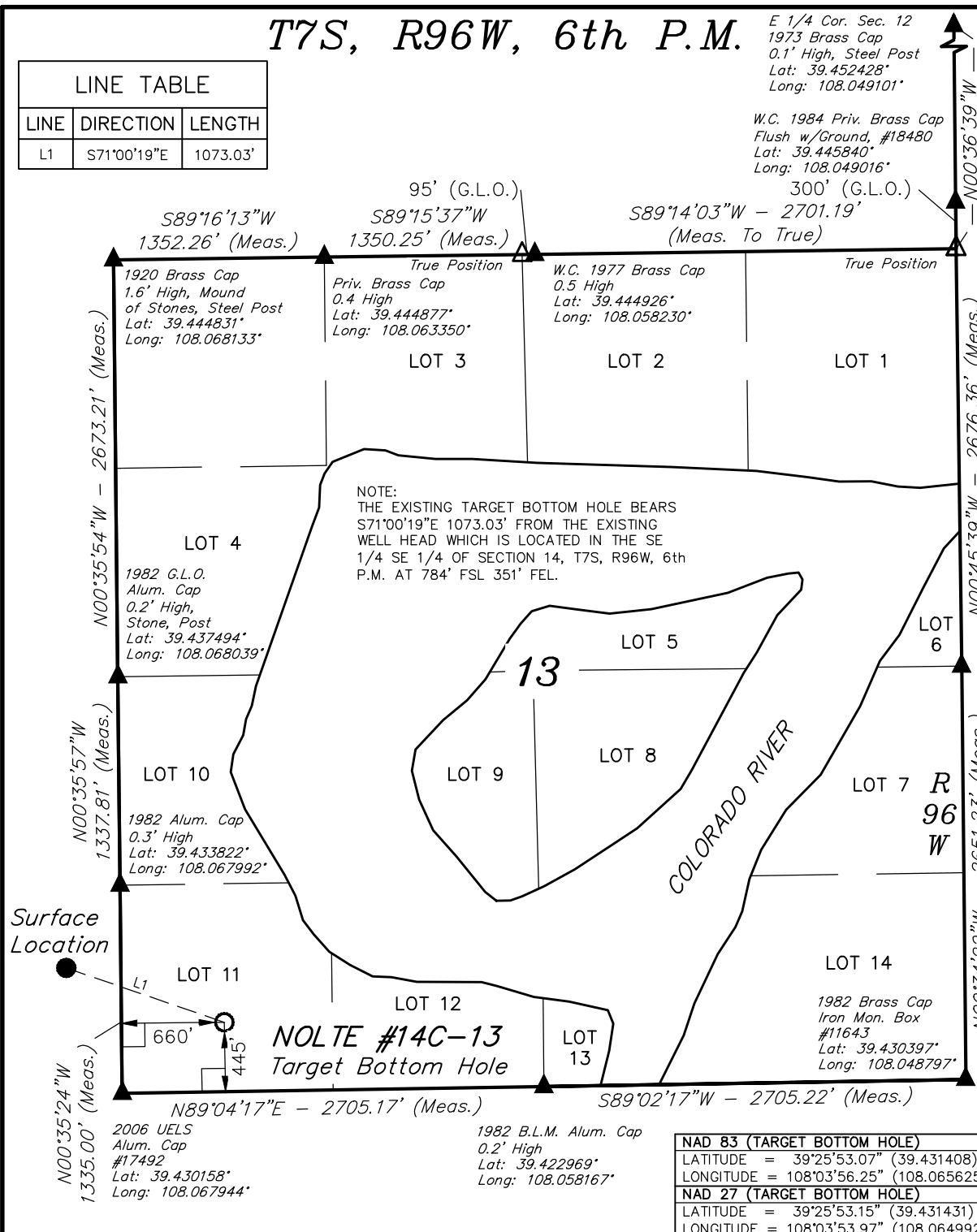
85 SOUTH 200 EAST - VERNAL, UTAH 84078

(435) 789-1017

SCALE 1" = 1000'	DATE SURVEYED: 09-12-14	DATE DRAWN: 09-22-14
PARTY B.B. B.O. M.O.B.	REFERENCES G.L.O. PLAT	
WEATHER WARM	FILE Caerus Oil & Gas LLC	

NAD 83 (TARGET BOTTOM HOLE)
LATITUDE = 39°25'53.07" (39.431408)
LONGITUDE = 108°03'56.25" (108.065625)
NAD 27 (TARGET BOTTOM HOLE)
LATITUDE = 39°25'53.15" (39.431431)
LONGITUDE = 108°03'53.97" (108.064992)

NOTE:
THE EXISTING TARGET BOTTOM HOLE BEARS
S71°00'19"E 1073.03' FROM THE EXISTING
WELL HEAD WHICH IS LOCATED IN THE SE
1/4 SE 1/4 OF SECTION 14, T7S, R96W, 6th
P.M. AT 784' FSL 351' FEL.



Surface Location

2006 UELS Alum. Cap #17492
Lat: 39.430158°
Long: 108.067944°

1982 B.L.M. Alum. Cap 0.2' High
Lat: 39.422969°
Long: 108.058167°

NOLTE #14C-13
Target Bottom Hole