

T7S, R96W, 6th P.M.

Caerus Oil & Gas LLC

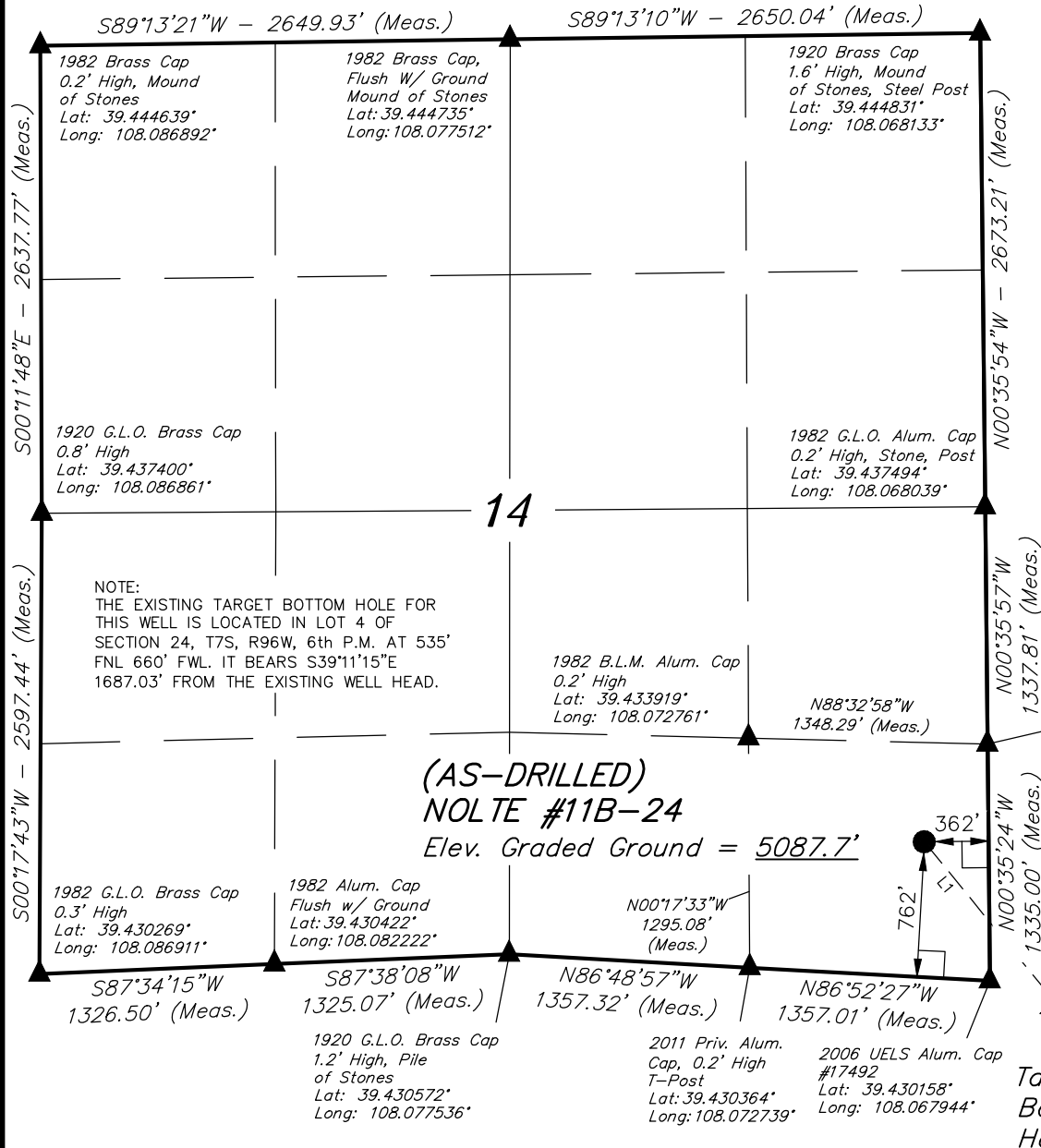
Well location, (AS-DRILLED) NOLTE #11B-24 (SURFACE LOCATION), located as shown in the SE 1/4 SE 1/4 of Section 14, T7S, R96W, 6th P.M., Garfield County, Colorado.

BASIS OF ELEVATION

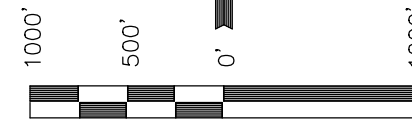
SPOT ELEVATION AT THE NORTHWEST CORNER OF SECTION 30, T5S, R95W, 6th P.M., TAKEN FROM THE FORKED GULCH QUADRANGLE, GARFIELD COUNTY, COLORADO, 7.5 MINUTE QUAD. (TOPOGRAPHIC MAP) PUBLISHED BY THE UNITED STATES DEPARTMENT OF THE INTERIOR, GEOLOGICAL SURVEY. SAID ELEVATION IS MARKED AS BEING 5966 FEET.

BASIS OF BEARINGS

BASIS OF BEARINGS IS A G.P.S. OBSERVATION.



LINE TABLE		
LINE	DIRECTION	LENGTH
L1	S39°11'15"E	1687.03'



SCALE

CERTIFICATE

THIS IS TO CERTIFY THAT THE ABOVE PLAT WAS PREPARED FROM FIELD NOTES OF ACTUAL SURVEYS MADE BY ME OR UNDER MY SUPERVISION AND THAT THE SAME ARE TRUE AND CORRECT TO THE BEST OF MY KNOWLEDGE AND BELIEF.

Harold Mansfield
 REGISTERED LAND SURVEYOR
 REGISTRATION NO. 38130
 STATE OF COLORADO 09-23-14

UINTAH ENGINEERING & LAND SURVEYING
 85 SOUTH 200 EAST - VERNAL, UTAH 84078
 (435) 789-1017

- LEGEND:**
- └─┘ = 90° SYMBOL
 - = EXISTING WELL HEAD.
 - ▲ = SECTION CORNERS LOCATED.

PDOP = 1.7

NAD 83 (SURFACE LOCATION)	
LATITUDE = 39°25'56.32"	(39.432311)
LONGITUDE = 108°04'09.31"	(108.069253)
NAD 27 (SURFACE LOCATION)	
LATITUDE = 39°25'56.40"	(39.432333)
LONGITUDE = 108°04'07.04"	(108.068622)

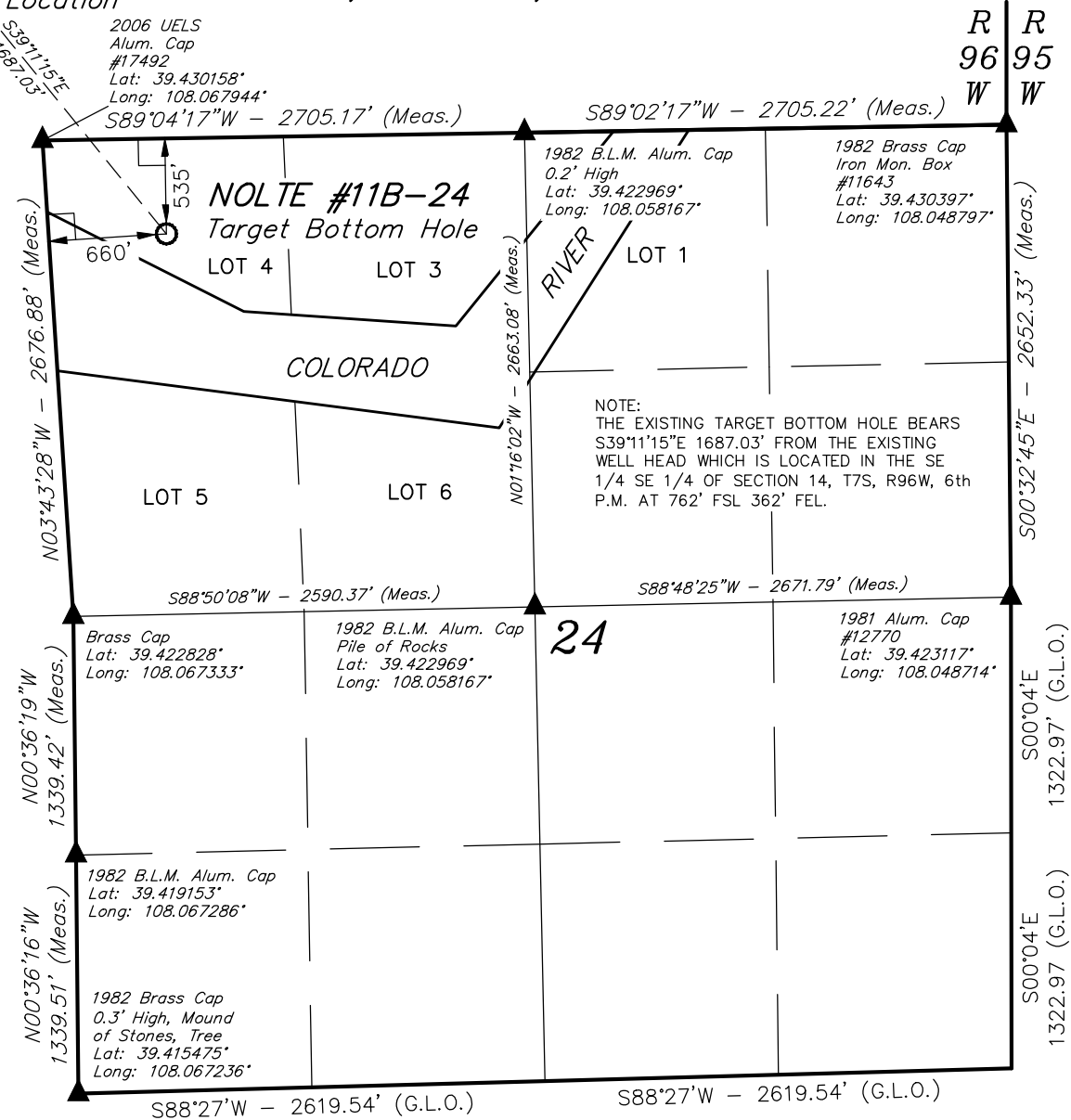
SCALE 1" = 1000'	DATE SURVEYED: 09-12-14	DATE DRAWN: 09-22-14
PARTY B.B. B.O. M.O.B.	REFERENCES G.L.O. PLAT	
WEATHER WARM	FILE Caerus Oil & Gas LLC	

Surface Location

T7S, R96W, 6th P.M.

Caerus Oil & Gas LLC

Well location, (AS-DRILLED) NOLTE #11B-24 (TARGET BOTTOM HOLE), located as shown in LOT 4 of Section 24, T7S, R96W, 6th P.M., Garfield County, Colorado.

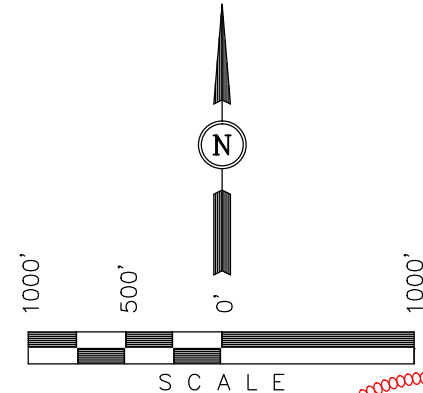


BASIS OF ELEVATION

SPOT ELEVATION AT THE NORTHWEST CORNER OF SECTION 30, T5S, R95W, 6th P.M., TAKEN FROM THE FORKED GULCH QUADRANGLE, GARFIELD COUNTY, COLORADO, 7.5 MINUTE QUAD. (TOPOGRAPHIC MAP) PUBLISHED BY THE UNITED STATES DEPARTMENT OF THE INTERIOR, GEOLOGICAL SURVEY. SAID ELEVATION IS MARKED AS BEING 5966 FEET.

BASIS OF BEARINGS

BASIS OF BEARINGS IS A G.P.S. OBSERVATION.



CERTIFICATE

THIS IS TO CERTIFY THAT THE ABOVE PLAT WAS PREPARED FROM FIELD NOTES OF ACTUAL SURVEYS MADE BY ME OR UNDER MY SUPERVISION AND THAT THE SAME ARE TRUE AND CORRECT TO THE BEST OF MY KNOWLEDGE AND BELIEF.

Harold Marshall
 REGISTERED LAND SURVEYOR
 REGISTRATION NO. 38130
 STATE OF COLORADO 09-23-14

UINTAH ENGINEERING & LAND SURVEYING
 85 SOUTH 200 EAST - VERNAL, UTAH 84078
 (435) 789-1017

LEGEND:

- └─┘ = 90° SYMBOL
- = EXISTING WELL HEAD.
- ▲ = SECTION CORNERS LOCATED.

NAD 83 (TARGET BOTTOM HOLE)
LATITUDE = 39°25'43.39" (39.428719)
LONGITUDE = 108°03'55.74" (108.065483)
NAD 27 (TARGET BOTTOM HOLE)
LATITUDE = 39°25'43.47" (39.428742)
LONGITUDE = 108°03'53.47" (108.064853)

SCALE 1" = 1000'	DATE SURVEYED: 09-12-14	DATE DRAWN: 09-22-14
PARTY B.B. B.O. M.O.B.	REFERENCES G.L.O. PLAT	
WEATHER WARM	FILE Caerus Oil & Gas LLC	