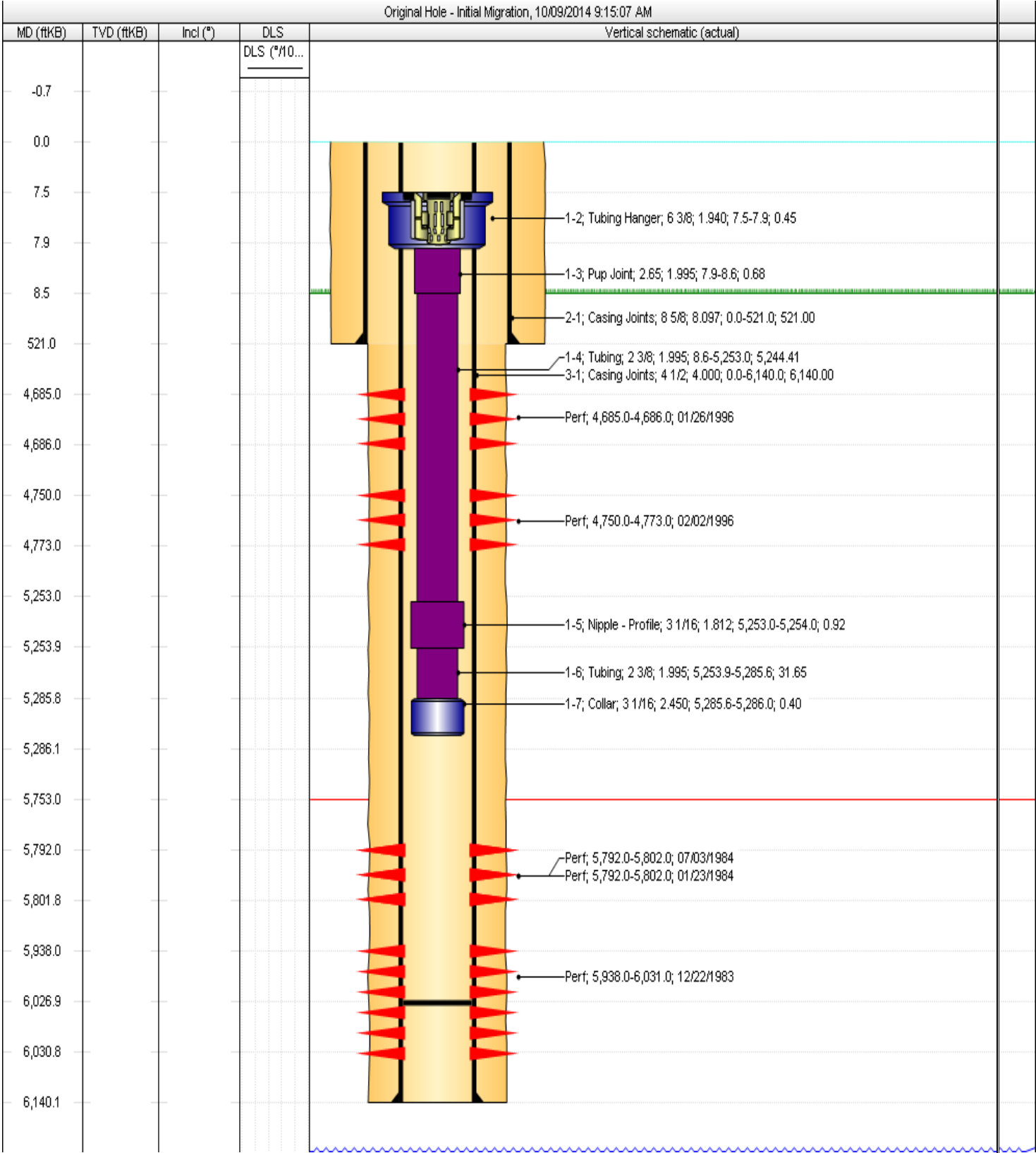


Aitken 23-11 Wellbore diagram.



Aitken 23-11

NE/SW - Section 23 - T9S - R95W

FEE / FEE

API: 05-077-08558

Lat. 39.260542/Long. -107.96301

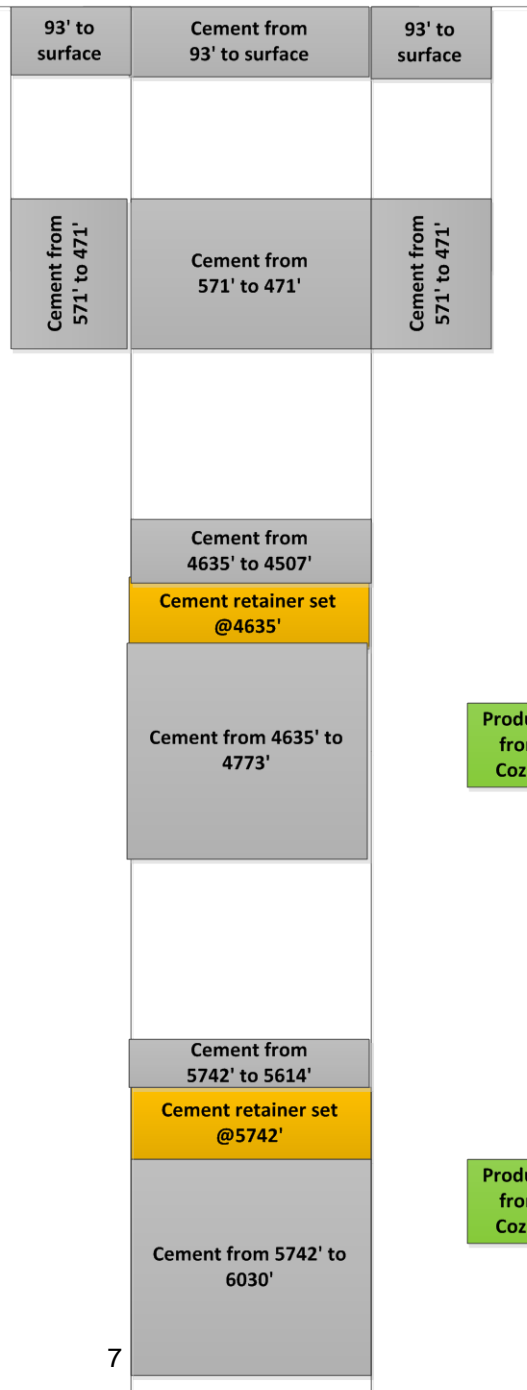
Mesa County, Colorado

Proposed wellbore
diagram

Surface casing shoe.
8.625" – 24 lb. – K55
Set @ 521'

Surface casing squeeze
perfs shot @ 571'

4.5" production casing.
11.6 lb. – N 80.
Set @ 6140'



Production casing perfs
from 4685' to 4773'
Cozzette & Corcoran

Production casing perfs
from 5792' to 6030'
Cozzette & Corcoran