

NOBLE ENERGY

**TRUMP
A 13-10**

API Well No.:

**2/9/2006
WELD**

LONG STRING

Customer Representative:

GEORGE HINE

Halliburton Operator:

J. HERRERA

Ticket No.:

4211244



JOB SUMMARY		SALES ORDER NUMBER 4211244	TICKET DATE 02/10/06
		BDA / STATE COLO	COUNTY WELD
REGION NORTH AMERICA	NWA TRY RC Y MOUNTAIN	PSL DEPARTMENT ZONAL ISOLATION	
MBU ID / EMPL # 121750	H.E.S. EMPLOYEE NAME J. HERRERA	CUSTOMER REP / PHONE GEORGE HINE	
LOCATION BRIGHTON	COMPANY NOBLE ENERGY	API/WVI #	
TICKET AMOUNT	WELL TYPE GAS	SAP BOMB NUMBER 7523	
WELL LOCATION GILL	DEPARTMENT ZONAL ISOLATION 100003	Description LONG STRING	
LEASE NAME TRUMP	Well No. A 13-10	SEC / TWP / RNG	

H.E.S. EMP NAME / EMP # / (EXPOSURE HOURS)	HRS	HRS	HRS	HRS
HERRERA 121750	3.0	STEEL 373379	3.0	
GILLILAND 248919	3.0			
SCOTT 368396	3.0			
RAMON 332378	3.0			

H.E.S. UNIT #S / (R / T MILES)	R / T MILES	R / T MILES	R / T MILES	R / T MILES
10286181	100			
10219246	100			
10026683-10246780	100			
10241536-10025105	100			

Form. Name _____ Type: _____
Form. Thickness _____ From _____ To _____
Packer Type _____ Set At _____
Bottom Hole Temp. _____ Pressure _____
Retainer Depth _____ Total Depth **6,927**

Type and Size	Qty	Make
Float Collar		
Float Shoe		
Centralizers		
Top Plug		
Limit Clamp		
DV Tool		
Insert Float		
Guide Shoe		
Weld-A		

Materials			
Mud Type	Density	9.4	Lb/Gal
Disp. Fluid	Density	8.33	Lb/Gal
Prop. Type	Size		Lb
Prop. Type	Size		Lb
Acid Type	Gal.		%
Acid Type	Gal.		%
Surfactant	Gal.		In
NE Agent	Gal.		In
Fluid Loss	Gal/Lb		In
Gelling Agent	Gal/Lb		In
Fric. Red.	Gal/Lb		In
Breaker	Gal/Lb		In
Blocking Agent	Gal/Lb		
Perfpac Balls	Qty.		
Other			
Other			
Other			
Other			
Other			

Date	Called Out	On Location	Job Started	Job Completed
	02/10/06	02/10/06	02/10/06	02/10/06
Time	0500	0830	1038	1207

Well Data							
	New/Used	Weight	Size	Grade	From	To	Max. Allow
Casing	U	11.6#	4.5		0	6,876	2,500
Liner							
Liner							
Tubing							
Drill Pipe							
Open Hole							Shots/Ft.
Perforations							
Perforations							
DV Tool							

Hours On Location		Operating Hours		Description of Job
Date	Hours	Date	Hours	
2/10	3.0	2/10	1.5	SEE JOB LOG
Total	3.0	Total	1.5	

Hydraulic Horsepower			
Ordered	Avail.	Used	
Average Rates in BPM			
Treating	5	Disp.	9
Overall 7			
Cement Left in Pipe			
Feet	42.00	Reason	SHOE JOINT

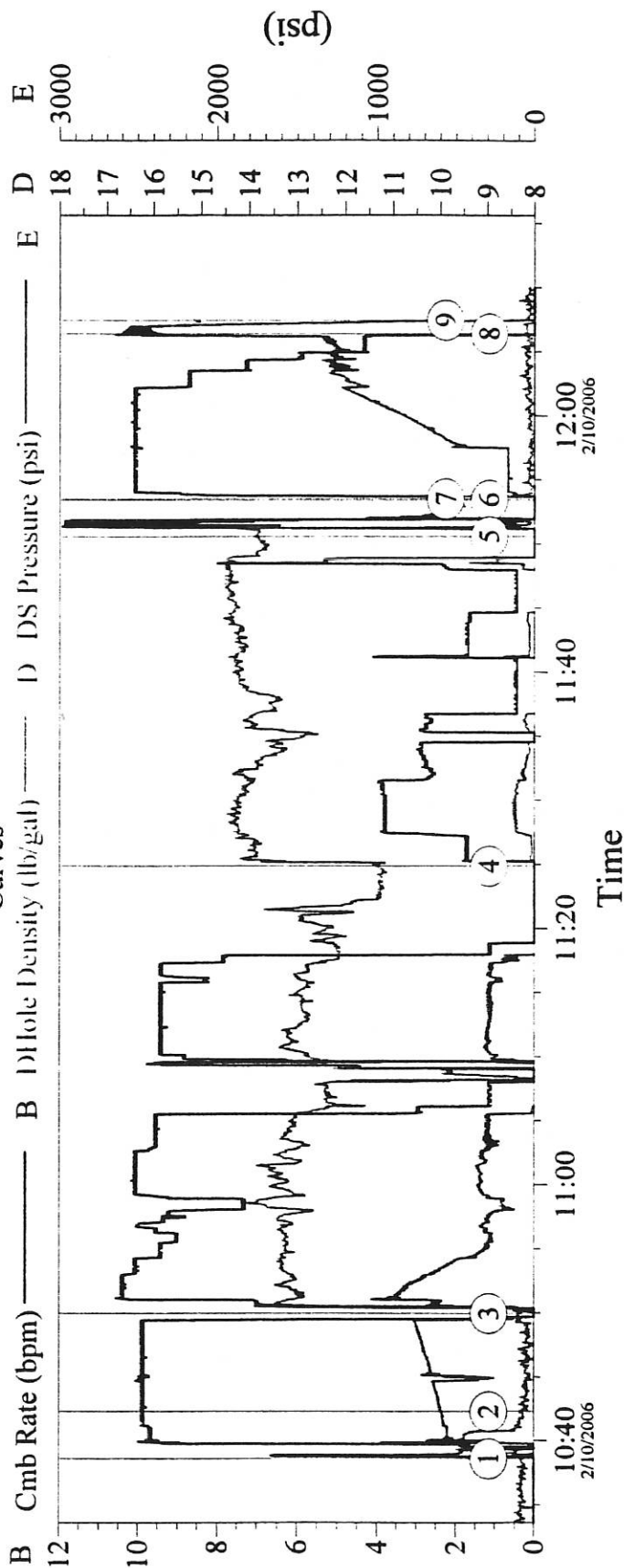
Cement Data							
Stage	Sacks	Cement	Bulk/Sks	Additives	W/Rq.	Yield	Lbs/Gal
1	750	HLC STD	B	65% CMT, 35% POZ, 6% GEL, 25% HALAD-322, 25% HR-5	9.42	1.78	12.8
			B				
2	150	50/50 POZ	B	35% SSA-1, 5% Sks SILICALITE, 5% HALAD-23, 3% HALAD-322, 2% HR-5, 2% GEL, 5	7.45	1.71	14.2
			B				
			B				

Summary							
Circulating	260	Displacement	378	Preflush:	Gal - BBI	24-70-50	Type: MF- H20
Breakdown		Maximum	2,500	Load & Bkdn:	Gal - BBI		Pad: Bbl - Gal
Lost Returns-Y		Lost Returns-NO		Excess /Return	Gal BBI		Calc. Disp Bbl
Cmt Rtn#Bbl		Actual TOC		Calc. TOC:			Actual Disp.
Average		Frac. Gradient		Treatment:	Gal - BBI		Disp: Bbl-Gal
Shut In: Instant		5 Min.	15 Min	Cement Slurry:	Gal - BBI	237=45	
				Total Volume	Gal - BBI	534	

Frac Ring #1	Frac Ring #2	Frac Ring #3	Frac Ring #4
THE INFORMATION STATED HEREIN IS CORRECT CUSTOMER REPRESENTATIVE <u> X </u>			
SIGNATURE _____			

TRUMP A 13-10 4211244

Curves



Event Log						
Intersection		CR	DD	DP	Intersection	
①	Pump Spacer 1	10:38:36	0.000	8.237	-20.13	② Pump Spacer 2
③	Pump Lead Cement	10:49:58	0.000	8.316	219.3	④ Pump Tail Cement
⑤	Clean Lines	11:50:34	0.000	13.82	-21.11	⑥ Drop Plug
⑦	Pump Displacement	11:53:31	0.000	9.648	-17.20	⑧ Bump Plug
⑨	End Job	12:07:27	0.000	8.075	-20.13	
			</			



JOB LOG

TICKET #

4211244

TICKET DATE

02/10/06

REGION NORTH AMERICA LAND	NWA / COUNTRY ROCKY MOUNTAIN	BDA / STATE COLO	COUNTY WELD
MBU ID / EMPL # #	H.E.S. EMPLOYEE NAME J. HERRERA	PSL DEPARTMENT ZONAL ISOLATION	
LOCATION BRIGHTON	COMPANY NOBLE ENERGY	CUSTOMER REP / PHONE GEORGE HINE	
TICKET AMOUNT	WELL TYPE 02 GAS	API/UWI #	
WELL LOCATION GILL	DEPARTMENT ZONAL ISOLATION 100003	JOB PURPOSE CODE LONG STRING	
LEASE / WELL # TRUMP	Well No. A 13-10	SEC / TWP / RNG	

Chart No.	Time	Rate (BPM)	Volume (BBL)(GAL)	Pmps		Press.(PSI)		Job Description / Remarks
				T	C	Tbg	Csg	
	0830							ARRIVE ON LOCATION 02/10/06
	0840							CONDUCT LOCATION ASSESSMENT SAFETY MEETING
	0850							SPOT EQP. AND RIG UP
	1015	O	O		1			SAFTYMEETING
	1038	6.0	24.0		1		O	M/F
	1042	6.0	70.0		1		160	H2O CLYFIX
	1049	6.0	237.0		1		200	CMT 12.5# 750 SK
	1124	6.0	45.6		1		300	CMT 14.2 # 150 SK
	1150	5.0	10.0		1		O	WASH PUMP LINES @ DROP PLUG
	1153	8.0	106.5		1		687	DISPLEASE W CLY
	1204	3.0	104.0		1		985	SLOW DOWN 3 BPM
	1206	3.0	106.0		1		2500	BUMP PLUG
	1206	O	O		1		O	RELEASE P S I
	1207	O	O		1		O	PLUG HELD
	1207	O	O		1		O	END JOB
	1230	O	O		1		O	SAFTYMEETING
								ENSIGN 2 #
								THANK YOU FOR CALLING HALLIBURTON
								HERRERA @ CREW

Material	Description	QTY	UOM	Base Amt	Unit Amt	Gross Amount	Discount	Net Amount
12313	SBM CEMENT-HALLIBURTON LIGHT STANDARD	750	SK					
100003646	CHEMICAL - HALAD-322 - 50 LB SACK	162	LB					
100005050	Chemical - HR-5 (50 lb)	162	LB					
12302	SBM 50-50 POZ (PREMIUM)	150	SK					
100003691	Sand- 200 Mesh Silica Flour (Bulk) SSA-1	4305	LB					
100012223	Chemical - Silicalite Compacted, 50 lb	750	LB					
101209204	Chemical - Halad-23 (50 lb)	86	LB					
100003646	CHEMICAL - HALAD-322 - 50 LB SACK	38	LB					
100003653	CHEMICAL - CFR-3 - 50 LB SACK	38	LB					
13383	SBM MUD FLUSH,ZI	1000	GAL					
100003729	CHEM-CLAYFIX II - HALTANK	15	GAL					
432487	CMT, Bulk Cement Surcharge	900	EA					

Operator Name: J.HERRERA
Customer Agent: GEORGE HINE

X

Customer Signature

FIELD TICKET TOTAL \$24,887.33

CEMENT JOB SUMMARY SHEET

Job Type **LONG STRING**

	Size	Weight	Grade	Measured Depth
Casing	4 .5	11.6#		
Drill Pipe				
Tubing				
Hole Size				
Mud Weight	-	9.4		

CEMENT DATA

Spacer	24-70-50 Bbls M\F-- H2O		
Cement 1	HLC STD		750 Sacks
Additives	65%CMT,35%POZ,6%GEL.25%HALAD-322,.25%HR-5		
	Weight (lb/gal) 12.80	Yield (cuft/sk) 1.78	Water (gal/sk) 9.42

Cement 3	50\50POZ		150 Sacks
Additives	35%SSA-1,5#askSILICALITE,.5%HALAD-23.3%HALAD-322.2%HR-5,2%GEL.5%CFR-3		
	Weight (lb/gal) 14.20	Yield (cuft/sk) 1.71	Water (gal/sk) 7.45

Displacement **8.33 (lb/gal)**

CEMENTING EQUIPMENT

Provider			
Guide Shoe	ea.	Centralizers	ea.
Float Shoe	ea.	Plug Type	ea.
Float Collar	ea.	Packer	ft.
DV Tool	ft.	Retainer	ft.