

HALLIBURTON

iCem[®] Service

Post Job Report

ANADARKO PETROLEUM CORP - EBUS

For: BOB PORTER

Date: Thursday, May 29, 2014

SICKLER 27C-34HZ

SICKLER
Case 1

Sincerely,

AARON SMITH

Field Ticket Number: 0001375005	Field Ticket Date: Thursday, May 20, 2010	Planning Order #: NA
Bill To: ANADARKO PETROLEUM CORP - EBUS, DO NOT MAIL - PO BOX 4995, THE WOODLANDS, TX, 77387-4995	Job Name: 9 5/8" Surface	Order Type: ZOH
Ship To: SICKLER 27C-34HZ, WELU, NONE, CO, 80621	Well Name: SICKLER 27C-34HZ	Company Code: 11UU
	Customer PO No.: NA	Shipping Point: FORT LUPTON Shipping Point
	Sales Office: ROCKY MOUNTAINS BD	Well Type: HORIZONTAL GAS
	Well Category: Development	

Material	Description	QTY	UOM	Unit Amount	Gross Amount	Discount	Net Amount
7521	CMT SURFACE CASING BOM	1	JOB	0.00	0.00		0.00
2	MILEAGE FOR CEMENTING CREW <i>Number of Units</i>	20 1	MI	5.76	115.20	78.34	36.86
1	ZI-MILEAGE FROM NEAREST HES BASE/UNIT <i>Number of Units</i>	20 1	MI	9.79	195.80	133.14	62.66
16091	ZI - PUMPING CHARGE <i>FEET/METERS (FT/M)</i> <i>DEPTH</i>	1 FT 1270	EA	4,935.00	4,935.00	3355.80	1,579.20
86954	ZI FUEL SURCHG-CARS/PICKUPS<1 1/2TON <i>Number of Units</i>	20 1	MI	0.22	4.40		4.40
86956	ZI FUEL SURCHG-HEAVY TRKS >1 1/2 TON <i>Number of Units</i>	20 1	MI	0.67	13.40		13.40
87605	FUEL SURCHG-CMT & CMT ADDITIVES <i>NUMBER OF TONS</i>	10 24.53	MI	5.40	53.97		53.97
452990	CMT, SwiftCem (TM) system	492	SK	42.93	21,121.56	14362.66	6,758.90
10121694U	CHEM, Poly-E-Flake, 25 lb bag <i>Poly-E-Flake</i>	62	LB	7.84	486.08	330.53	155.55
100001580	CHEM, ECONOLITE-ADDITIVE, 50 LB BAG <i>Econolite</i>	740	LB	5.59	4,136.60	2812.89	1,323.71
101217146	Chem- Calseal 60 (50 #bag) <i>Cal-Seal 60</i>	19	SK	55.80	1,060.20	720.94	339.26
101375573	CHEM, Versaset, 55 lb sack <i>Versaset</i>	93	LB	12.12	1,127.16	766.47	360.69
101894003	CHEM, ENHANCER 923, BULK <i>Enhancer 923, CMI</i>	984	LB	1.05	1,033.20	702.58	330.62
76400	MILEAGE,CMT MTLs DEL/RET MIN <i>NUMBER OF TONS</i>	10 24.53	MI	82.18	821.76	558.80	262.96
3965	HANDLE&DUMP SVC CHRNG, CMT&ADDITIVES,ZI <i>Unit of Measurement</i> <i>NUMBER OF EACH</i>	537 EA 1	CF	5.49	2,948.13	2004.73	943.40
528788	SBM, CMT- MUD FLUSH III	10	BBL	94.45	944.50	642.26	302.24
Totals USD					\$ 38,996.96	\$ 26,469.14	\$ 12,527.82

Field Ticket Signature

Field Ticket Number: 0901375005 Field Ticket Date: Thursday, May 29, 2014 Planning Order #: NA

Bill To:
ANADARKO PETROLEUM CORP - EBUS,
DO NOT MAIL - PO BOX 4995,
THE WOODLANDS, TX, 77387-4995

Job Name: 9 5/8" Surface
Order Type: ZOH
Well Name: SICKLER 27C-34HZ
Company Code: 1100
Customer PO No.: NA
Shipping Point: FORT LUPTON Shipping Point
Sales Office: ROCKY MOUNTAINS BD
Well Type: HORIZONTAL GAS
Well Category: Development

Ship To:
SICKLER 27C-34HZ,WELD,
IONE, CO, 80621

THIS OUTPUT DOES NOT INCLUDE TAXES. APPLICABLE SALES TAX WILL BE BILLED ON THE FINAL INVOICE. CUSTOMER HEREBY ACKNOWLEDGES RECEIPT OF THE MATERIALS AND SERVICES DESCRIBED ABOVE, ON ANY PRECEDING PAGES, AND ATTACHED DOCUMENTS.

Gross Amount Total: \$ 38,996.96
Item Discount Total: \$ 26,469.14
Net Amount Total: \$ 12,527.82 USD

Customer Representative Signature: _____

Date: _____

BOB PORTER

Aaron Smith

Customer Representative

Halliburton Representative

Was our HSE performance satisfactory? (Health, Safety, Environment)

Yes No

Were you satisfied with our equipment?

Yes No

Were you satisfied with our people?

Yes No

Comments:



HALLIBURTON

ANADARKO PETROLEUM CORP - EBUS
ANADARKO PETROLEUM SICKLER27C-34HZ SURFACE
Case 1

1.6 Job Event Log

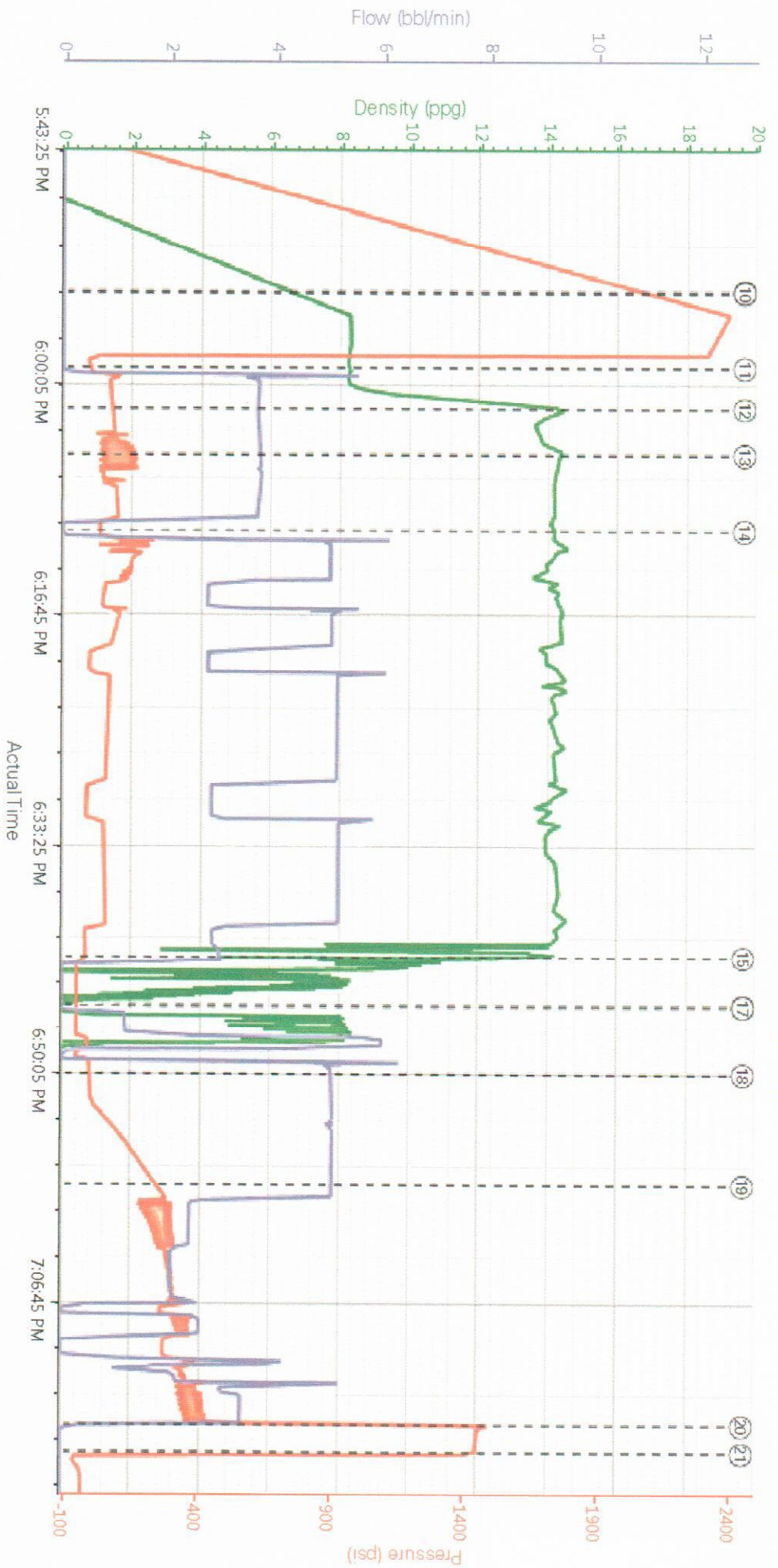
Type	Seq. No.	Activity	Graph Label	Date	Time	Source	Recirc Density (ppg)	Drv-Side Pump Pressure (psi)	Drv-Side Pump Rate (bbl/min)	Comment
Event	1	Call Out	Call Out	5/29/2014	12:00:00	USER				CREW CALLED OUT BY HES CREW
Event	2	Depart Yard Safety Meeting	Depart Yard Safety Meeting	5/29/2014	12:30:00	USER				JOURNEY MANAGEMENT MEETING PRIOR TO DEPARTURE
Event	3	Depart from Service Center or Other Site	Depart from Service Center or Other Site	5/29/2014	12:45:00	USER				WITH ALL EQUIPMENT AND MATERIALS
Event	4	Arrive at Location from Service Center	Arrive at Location from Service Center	5/29/2014	16:24:18	USER				RIG-UP JSA WITH HES CREW
Event	5	Pre-Rig Up Safety Meeting	Pre-Rig Up Safety Meeting	5/29/2014	16:24:26	USER				
Event	6	Rig-Up Equipment	Rig-Up Equipment	5/29/2014	16:24:29	USER				
Event	7	Rig-Up Completed	Rig-Up Completed	5/29/2014	16:24:39	USER				WITH ALL EQUIPMENT AND MATERIAL
Event	8	Pre-Job Safety Meeting	Pre-Job Safety Meeting	5/29/2014	16:24:45	USER				
Event	9	Start Job	Start Job	5/29/2014	17:53:40	COM7				
Event	10	Test Lines	Test Lines	5/29/2014	17:53:43	COM7				@2500 PSI
Event	11	Pump Spacer 1	Pump Spacer 1	5/29/2014	17:59:09	COM7	8.29	0.99	0.00	10 BBLS FRESH WATER
Event	12	Pump Spacer 2	Pump Spacer 2	5/29/2014	18:02:09	COM7	14.43	87.72	3.65	12 BBLS MUD FLUSH
Event	13	Pump Spacer 1	Pump Spacer 1	5/29/2014	18:05:27	COM7	14.28	130.37	3.59	10 BBLS FRESH WATER
Event	14	Pump Cement	Pump Cement	5/29/2014	18:10:54	COM7	14.18	39.42	0.00	134 BBLS 492SKS @ 14.2 PPG, 1.54 YIELD, 7.64 GAL/SK
Event	15	Shutdown	Shutdown	5/29/2014	18:41:49	COM7	9.50	-42.38	0.00	
Event	16	Drop Top Plug	Drop Top Plug	5/29/2014	18:45:22	COM7	-0.08	-47.31	0.00	PRE-LOADED HWE TOP PLUG IN PLUG CONTAINER
Event	17	Pump Displacement	Pump Displacement	5/29/2014	18:45:26	COM7	-0.08	-46.32	0.00	94 BBLS FRESH WATER
Event	18	Spacer Returns to Surface	Spacer Returns to Surface	5/29/2014	18:50:23	USER	-0.10	4.93	5.09	@22 BBLS DISPLACEMENT 32 BBLS TO SURFACE

HALLIBURTON

ANADARKO PETROLEUM CORP - EBUS
 ANADARKO PETROLEUM SICKLER 27C-34HZ SURFACE
 Case 1

Event	Description	Date	Time	User	Value	Value	Value	Notes
Event 19	Other	5/29/2014	18:58:28	COM7	-0.09	266.11	5.09	@ 54 BBLs DISPLACEMENT 40 BBLs TO SURFACE
Event 20	Bump Plug	5/29/2014	19:15:55	COM7	-0.11	1471.52	0.00	FINAL CIRCULATING PRESSURE 389 PSI
Event 21	Check Floats	5/29/2014	19:17:59	USER	-0.09	-52.24	0.00	FLOATS HELD 1 BBL BACK
Event 22	End Job	5/29/2014	19:26:08	COM7	-0.06	33.51	3.39	
Event 23	Pre-Rig Down Safety Meeting	5/29/2014	19:30:53	USER				
Event 24	Rig-Down Equipment	5/29/2014	19:35:00	USER				
Event 25	Rig-Down Completed	5/29/2014	19:43:52	USER				
Event 26	Depart Location Safety Meeting	5/29/2014	19:50:00	USER				JOURNEY MANAGEMENT MEETING
Event 27	Depart Location for Service Center or Other Site	5/29/2014	20:00:00	USER				THANKS AARON SMITH AND CREW

ANADARKO PETROLEUM SICKLER 27C-34HZ SURFACE



Recirc Density (ppg) -0.08 DS Pump Press (psi) -7.88 DS Pump Rate (bbl/min) 0

- ① Call Out n/a:n/a:n/a
- ② Depart Yard Safety Meeting n/a:n/a:n/a
- ③ Depart from Service Center or Other Site n/a:n/a:n/a
- ④ Arrive at Location from Service Center n/a:n/a:n/a
- ⑤ Pre-Rig Up Safety Meeting n/a:n/a:n/a
- ⑥ Rig-Up Equipment n/a:n/a:n/a
- ⑦ Rig-Up Completed n/a:n/a:n/a
- ⑧ Pre-Job Safety Meeting n/a:n/a:n/a
- ⑨ Start Job 7:01:2170.52:0
- ⑩ Test Lines 7:08:2183.82:0
- ⑪ Pump Spacer 1 8:29:0.99:0
- ⑫ Pump Spacer 2 14:43:87.72:3.65
- ⑬ Pump Spacer 1 14:28:180.37:3.59
- ⑭ Pump Cement 14:18:39.42:0
- ⑮ Shutdown 9:5:42.38:0
- ⑯ Drop Top Plug -0.08:-47.31:0
- ⑰ Pump Displacement -0.08:-46.32:0
- ⑱ Spacer Returns to Surface -0:14:93.5:09
- ⑲ Cement Returns to Surface -0:09:266.11:5.09
- ⑳ Bump Plug -0:11:1471.52:0
- ㉑ Check Floats -0
- ㉒ End Job -0:06:3
- ㉓ Pre-Rig Down:
- ㉔ Rig Down Equi
- ㉕ Rig-Down Cor

HALLIBURTON | iCem® Service

Customer: ANADARKO PETROLEUM CORP - ERUS
 Representative: AARON SMITH
 Job Date: 5/29/2014 5:21:46 PM
 Well: SICKLER 27C-34HZ
 Sales Order #: 901375005
 Created: 2014-05-29 16:21:53, Version: 3.0.121