

# KERR-MCGEE OIL & GAS ONSHORE LP

Location: COLORADO Slot: SLOT#13 SUMMIT 13C-32HZ (395'FSL & 1031'FWL, SEC.29)

Field: WELD COUNTY (KERR MCGEE) Well: SUMMIT 13C-32HZ

Facility: SEC.29-T2N-R65W Wellbore: SUMMIT 13C-32HZ PWB

Plot reference wellpath is SUMMIT 13C-32HZ PWB (REV-A.0)

True vertical depths are referenced to XTREME 6 (16KB) (RKB)  
Measured depths are referenced to XTREME 6 (16KB) (RKB)  
XTREME 6 (16KB) (RKB) to Mean Sea Level: 4957 feet  
Mean Sea Level to Mud line (At Slot: SLOT#13 SUMMIT 13C-32HZ (395'FSL & 1031'FWL, SEC.29)): 0 feet  
Coordinates are in feet referenced to Slot  
Grid System: NAD83 / Lambert Colorado SP, Northern Zone (501), US feet  
North Reference: True north  
Scale: True distance  
Depths are in feet  
Created by: amarcar on 10/9/2014

## Location Information

Facility Name		Grid East (US ft)	Grid North (US ft)	Latitude	Longitude
SEC.29-T2N-R65W		3225918.182	1281512.847	40°06'11.954"N	104°41'32.485"W
Slot	Local N (ft)	Local E (ft)	Grid East (US ft)	Grid North (US ft)	Latitude
SLOT#13 SUMMIT 13C-32HZ (395'FSL & 1031'FWL, SEC.29)	-0.20	-309.97	3225918.241	1281509.823	40°06'11.952"N
XTREME 6 (16KB) (RKB) to Mud line (At Slot: SLOT#13 SUMMIT 13C-32HZ (395'FSL & 1031'FWL, SEC.29))				4957ft	104°41'36.474"W
Mean Sea Level to Mud line (At Slot: SLOT#13 SUMMIT 13C-32HZ (395'FSL & 1031'FWL, SEC.29))				0ft	
XTREME 6 (16KB) (RKB) to Mean Sea Level				4957ft	

## Survey Program

Start MD (ft)	End MD (ft)	Tool	Model	Log Name/Comment	Wellbore
16.00	1083.00	ISCWSA MWD, Rev. 2	ISCWSA MWD, Rev. 2 (Standard)		SUMMIT 13C-32HZ AWB
1083.00	7662.82	NavitTrak	NavitTrak (MAGCORR, IFR)		SUMMIT 13C-32HZ PWB
7662.82	12984.07	NavitTrak	NavitTrak (MAGCORR, IFR)		SUMMIT 13C-32HZ PWB

## Well Profile Data

Design Comment	MD (ft)	Inc (°)	Az (°)	TVD (ft)	Local N (ft)	Local E (ft)	DLS (°/100ft)	VS (ft)
TIE-INTO MWD SURVEYS	1083.00	0.600	336.100	1082.99	1.66	-2.95	0.00	-1.67
BEGIN NUDGE	1300.03	0.600	336.100	1300.00	3.74	-3.87	0.00	-3.75
END NUDGE	1790.17	10.000	45.310	1787.60	36.09	25.41	2.00	-36.03
BEGIN DROP	2690.17	10.000	45.310	2673.93	146.00	136.52	0.00	-145.64
END DROP	3190.17	0.000	179.846	3171.39	176.61	167.46	2.00	-176.16
KOP, BUILD @ 10°/100'	6762.82	0.000	179.846	6744.04	176.61	167.46	0.00	-176.16
LANDING POINT	7662.82	90.000	179.846	7317.00	-396.34	169.00	10.00	396.80
TOTAL DEPTH	12984.07	90.000	179.846	7317.00	-5717.58	183.27	0.00	5718.05

## Targets

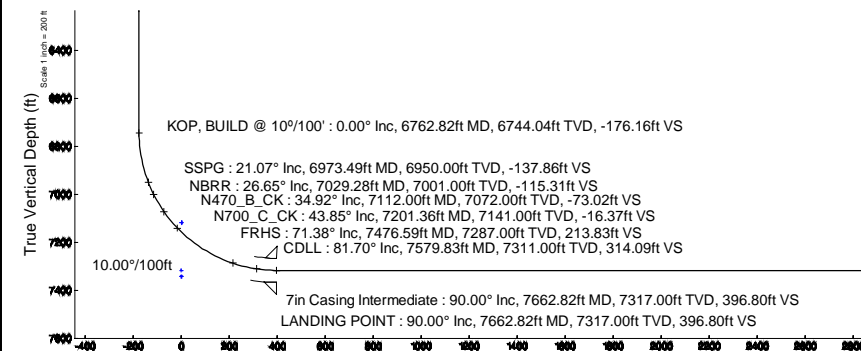
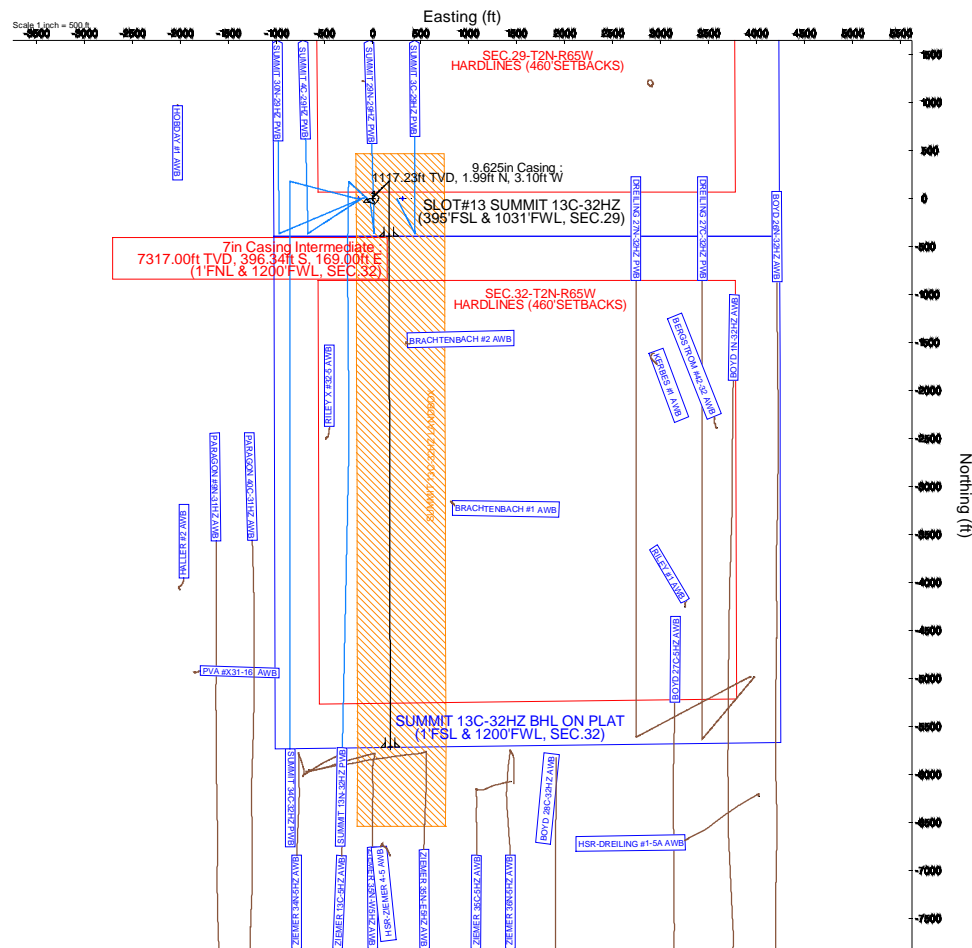
Name	MD (ft)	TVD (ft)	Local N (ft)	Local E (ft)	Grid East (US ft)	Grid North (US ft)	Latitude	Longitude
SEC.29-T2N-R65W SECTION LINES		7118.00	0.41	309.97	3225918.18	1281513.05	40°06'11.956"N	104°41'32.485"W
SEC.32-T2N-R65W SECTION LINES		7118.00	0.41	309.97	3225918.18	1281513.05	40°06'11.956"N	104°41'32.485"W
SUMMIT 13C-32HZ BHL ON PLAT (1'FSL & 1200'FWL, SEC.32)	12984.07	7317.00	-5717.58	183.27	3225943.50	1275794.39	40°06'15.450"N	104°41'34.116"W
SUMMIT 13C-32HZ LINDEXBOX		7317.00	0.00	0.00	3225908.24	1281509.82	40°06'11.952"N	104°41'36.474"W
SEC.29-T2N-R65W HARDLINES (460'SETBACKS)		7343.00	0.00	-149.94	3225458.31	1281508.46	40°06'11.952"N	104°41'38.404"W
SEC.32-T2N-R65W HARDLINES (460'SETBACKS)		7343.00	0.41	309.97	3225918.18	1281513.05	40°06'11.956"N	104°41'32.485"W

## Approval

Baker Hughes Representatives		Reviewed by	
Prepared by		Signature	
Signature		Position	
Position		Date	
Date			
KERR-MCGEE OIL & GAS ONSHORE LP Representative		Position	
Approved by		Signature	
Signature		Date	
Comment			



# XTREME 6



SUMMIT 13C-32HZ BHL ON PLAT (1'FSL & 1200'FWL, SEC.32)

TOTAL DEPTH : 90.00° Inc, 12984.07ft MD, 7317.00ft TVD, 5718.05ft VS

Vertical Section (ft)  
Azimuth 179.85° with reference 0.00 N, 0.00 E

Scale 1 inch = 200 ft

# Planned Wellpath Report

SUMMIT 13C-32HZ PWP (REV-A.0)

Page 1 of 7

## REFERENCE WELLPATH IDENTIFICATION

Operator	KERR-MCGEE OIL & GAS ONSHORE LP	Slot	SLOT#13 SUMMIT 13C-32HZ (395'FSL & 1031'FWL, SEC.29)
Area	COLORADO	Well	SUMMIT 13C-32HZ
Field	WELD COUNTY (KERR MCGEE)	Wellbore	SUMMIT 13C-32HZ PWB
Facility	SEC.29-T2N-R65W		

## REPORT SETUP INFORMATION

Projection System	NAD83 / Lambert Colorado SP, Northern Zone (501), US feet	Software System	WellArchitect® 4.0.0
North Reference	True	User	Amarcar
Scale	0.99996	Report Generated	10/9/2014 at 11:10:33 AM
Convergence at slot	n/a	Database/Source file	WellArchitectDB/SUMMIT_13C-32HZ_PWB.xml

## WELLPATH LOCATION

	Local coordinates		Grid coordinates		Geographic coordinates	
	North[ft]	East[ft]	Easting[US ft]	Northing[US ft]	Latitude	Longitude
Slot Location	-0.20	-309.97	3225608.24	1281509.82	40°06'11.952"N	104°41'36.474"W
Facility Reference Pt			3225918.18	1281512.85	40°06'11.954"N	104°41'32.485"W
Field Reference Pt			3197771.84	1268891.29	40°04'09.600"N	104°47'36.000"W

## WELLPATH DATUM

Calculation method	Minimum curvature	XTREME 6 (16'KB) (RKB) to Facility Vertical Datum	4957.00ft
Horizontal Reference Pt	Slot	XTREME 6 (16'KB) (RKB) to Mean Sea Level	4957.00ft
Vertical Reference Pt	XTREME 6 (16'KB) (RKB)	XTREME 6 (16'KB) (RKB) to Mud Line at Slot (SLOT#13 SUMMIT 13C-32HZ (395'FSL & 1031'FWL, SEC.29))	4957.00ft
MD Reference Pt	XTREME 6 (16'KB) (RKB)	Section Origin	N 0.00, E 0.00 ft
Field Vertical Reference	Mean Sea Level	Section Azimuth	179.85°

# Planned Wellpath Report

SUMMIT 13C-32HZ PWP (REV-A.0)

Page 2 of 7

## REFERENCE WELLPATH IDENTIFICATION

Operator	KERR-MCGEE OIL & GAS ONSHORE LP	Slot	SLOT#13 SUMMIT 13C-32HZ (395'FSL & 1031'FWL, SEC.29)
Area	COLORADO	Well	SUMMIT 13C-32HZ
Field	WELD COUNTY (KERR MCGEE)	Wellbore	SUMMIT 13C-32HZ PWB
Facility	SEC.29-T2N-R65W		

## WELLPATH DATA (151 stations) † = interpolated/extrapolated station

MD [ft]	Inclination [°]	Azimuth [°]	TVD [ft]	Vert Sect [ft]	North [ft]	East [ft]	Latitude	Longitude	DLS [°/100ft]	Comments
0.00†	0.000	20.800	0.00	0.00	0.00	0.00	40°06'11.952"N	104°41'36.474"W	0.00	
16.00	0.000	20.800	16.00	0.00	0.00	0.00	40°06'11.952"N	104°41'36.474"W	0.00	
62.00	0.300	20.800	62.00	-0.11	0.11	0.04	40°06'11.953"N	104°41'36.473"W	0.65	
130.00	0.100	325.400	130.00	-0.33	0.33	0.07	40°06'11.955"N	104°41'36.473"W	0.38	
229.00	0.100	59.100	229.00	-0.44	0.44	0.10	40°06'11.956"N	104°41'36.473"W	0.15	
327.00	0.100	134.700	327.00	-0.43	0.43	0.23	40°06'11.956"N	104°41'36.471"W	0.13	
407.00	0.100	278.400	407.00	-0.39	0.39	0.21	40°06'11.956"N	104°41'36.471"W	0.24	
487.00	0.100	345.500	487.00	-0.47	0.47	0.13	40°06'11.957"N	104°41'36.472"W	0.14	
567.00	0.200	220.600	567.00	-0.43	0.43	0.02	40°06'11.956"N	104°41'36.474"W	0.34	
647.00	0.400	283.400	647.00	-0.39	0.39	-0.35	40°06'11.956"N	104°41'36.478"W	0.45	
727.00	0.300	298.400	727.00	-0.55	0.55	-0.80	40°06'11.957"N	104°41'36.484"W	0.17	
807.00	0.300	278.400	807.00	-0.68	0.68	-1.19	40°06'11.959"N	104°41'36.489"W	0.13	
887.00	0.400	267.200	886.99	-0.70	0.70	-1.68	40°06'11.959"N	104°41'36.496"W	0.15	
967.00	0.600	303.900	966.99	-0.92	0.92	-2.31	40°06'11.961"N	104°41'36.504"W	0.46	
975.01†	0.577	305.441	975.00	-0.97	0.96	-2.37	40°06'11.962"N	104°41'36.505"W	0.35	FOX HILLS BASE
1047.00	0.400	326.700	1046.99	-1.39	1.38	-2.81	40°06'11.966"N	104°41'36.510"W	0.35	
1083.00	0.600	336.100	1082.99	-1.67	1.66	-2.95	40°06'11.968"N	104°41'36.512"W	0.60	TIE-INTO MWD SURVEYS
1183.00†	0.600	336.100	1182.98	-2.63	2.62	-3.38	40°06'11.978"N	104°41'36.517"W	0.00	
1283.00†	0.600	336.100	1282.98	-3.59	3.58	-3.80	40°06'11.987"N	104°41'36.523"W	0.00	
1300.03	0.600	336.100	1300.00	-3.75	3.74	-3.87	40°06'11.989"N	104°41'36.524"W	0.00	BEGIN NUDGE
1383.00†	1.927	31.294	1382.95	-5.34	5.33	-3.32	40°06'12.005"N	104°41'36.517"W	2.00	
1483.00†	3.883	40.096	1482.82	-9.36	9.36	-0.27	40°06'12.044"N	104°41'36.477"W	2.00	
1583.00†	5.868	42.981	1582.46	-15.67	15.69	5.40	40°06'12.107"N	104°41'36.405"W	2.00	
1683.00†	7.861	44.409	1681.73	-24.28	24.31	13.67	40°06'12.192"N	104°41'36.298"W	2.00	
1783.00†	9.857	45.262	1780.54	-35.16	35.22	24.53	40°06'12.300"N	104°41'36.158"W	2.00	
1790.17	10.000	45.310	1787.60	-36.03	36.09	25.41	40°06'12.309"N	104°41'36.147"W	2.00	END NUDGE
1883.00†	10.000	45.310	1879.02	-47.33	47.43	36.87	40°06'12.421"N	104°41'35.999"W	0.00	
1983.00†	10.000	45.310	1977.50	-59.51	59.64	49.22	40°06'12.541"N	104°41'35.841"W	0.00	
2083.00†	10.000	45.310	2075.98	-71.69	71.85	61.56	40°06'12.662"N	104°41'35.682"W	0.00	
2183.00†	10.000	45.310	2174.46	-83.87	84.07	73.91	40°06'12.783"N	104°41'35.523"W	0.00	
2283.00†	10.000	45.310	2272.94	-96.05	96.28	86.25	40°06'12.903"N	104°41'35.364"W	0.00	
2383.00†	10.000	45.310	2371.42	-108.23	108.49	98.60	40°06'13.024"N	104°41'35.205"W	0.00	
2483.00†	10.000	45.310	2469.90	-120.40	120.70	110.94	40°06'13.145"N	104°41'35.046"W	0.00	
2583.00†	10.000	45.310	2568.38	-132.58	132.92	123.29	40°06'13.265"N	104°41'34.887"W	0.00	
2683.00†	10.000	45.310	2666.86	-144.76	145.13	135.63	40°06'13.386"N	104°41'34.729"W	0.00	
2690.17	10.000	45.310	2673.93	-145.64	146.00	136.52	40°06'13.395"N	104°41'34.717"W	0.00	BEGIN DROP
2783.00†	8.143	45.310	2765.59	-155.90	156.30	146.92	40°06'13.497"N	104°41'34.583"W	2.00	
2883.00†	6.143	45.310	2864.81	-164.62	165.04	155.76	40°06'13.583"N	104°41'34.469"W	2.00	
2983.00†	4.143	45.310	2964.40	-170.91	171.35	162.14	40°06'13.645"N	104°41'34.387"W	2.00	
3083.00†	2.143	45.310	3064.25	-174.75	175.20	166.04	40°06'13.683"N	104°41'34.337"W	2.00	
3183.00†	0.143	45.310	3164.22	-176.15	176.61	167.45	40°06'13.697"N	104°41'34.319"W	2.00	
3190.17	0.000	179.846	3171.39	-176.16	176.61	167.46	40°06'13.697"N	104°41'34.319"W	2.00	END DROP
3283.00†	0.000	179.846	3264.22	-176.16	176.61	167.46	40°06'13.697"N	104°41'34.319"W	0.00	
3383.00†	0.000	179.846	3364.22	-176.16	176.61	167.46	40°06'13.697"N	104°41'34.319"W	0.00	
3483.00†	0.000	179.846	3464.22	-176.16	176.61	167.46	40°06'13.697"N	104°41'34.319"W	0.00	

# Planned Wellpath Report

SUMMIT 13C-32HZ PWP (REV-A.0)

Page 3 of 7

## REFERENCE WELLPATH IDENTIFICATION

Operator	KERR-MCGEE OIL & GAS ONSHORE LP	Slot	SLOT#13 SUMMIT 13C-32HZ (395'FSL & 1031'FWL, SEC.29)
Area	COLORADO	Well	SUMMIT 13C-32HZ
Field	WELD COUNTY (KERR MCGEE)	Wellbore	SUMMIT 13C-32HZ PWB
Facility	SEC.29-T2N-R65W		

## WELLPATH DATA (151 stations) † = interpolated/extrapolated station

MD [ft]	Inclination [°]	Azimuth [°]	TVD [ft]	Vert Sect [ft]	North [ft]	East [ft]	Latitude	Longitude	DLS [°/100ft]	Comments
3583.00†	0.000	179.846	3564.22	-176.16	176.61	167.46	40°06'13.697"N	104°41'34.319"W	0.00	
3683.00†	0.000	179.846	3664.22	-176.16	176.61	167.46	40°06'13.697"N	104°41'34.319"W	0.00	
3783.00†	0.000	179.846	3764.22	-176.16	176.61	167.46	40°06'13.697"N	104°41'34.319"W	0.00	
3883.00†	0.000	179.846	3864.22	-176.16	176.61	167.46	40°06'13.697"N	104°41'34.319"W	0.00	
3983.00†	0.000	179.846	3964.22	-176.16	176.61	167.46	40°06'13.697"N	104°41'34.319"W	0.00	
4083.00†	0.000	179.846	4064.22	-176.16	176.61	167.46	40°06'13.697"N	104°41'34.319"W	0.00	
4149.78†	0.000	179.846	4131.00	-176.16	176.61	167.46	40°06'13.697"N	104°41'34.319"W	0.00	PARKMAN
4183.00†	0.000	179.846	4164.22	-176.16	176.61	167.46	40°06'13.697"N	104°41'34.319"W	0.00	
4283.00†	0.000	179.846	4264.22	-176.16	176.61	167.46	40°06'13.697"N	104°41'34.319"W	0.00	
4383.00†	0.000	179.846	4364.22	-176.16	176.61	167.46	40°06'13.697"N	104°41'34.319"W	0.00	
4483.00†	0.000	179.846	4464.22	-176.16	176.61	167.46	40°06'13.697"N	104°41'34.319"W	0.00	
4502.78†	0.000	179.846	4484.00	-176.16	176.61	167.46	40°06'13.697"N	104°41'34.319"W	0.00	SUSSEX
4583.00†	0.000	179.846	4564.22	-176.16	176.61	167.46	40°06'13.697"N	104°41'34.319"W	0.00	
4683.00†	0.000	179.846	4664.22	-176.16	176.61	167.46	40°06'13.697"N	104°41'34.319"W	0.00	
4783.00†	0.000	179.846	4764.22	-176.16	176.61	167.46	40°06'13.697"N	104°41'34.319"W	0.00	
4883.00†	0.000	179.846	4864.22	-176.16	176.61	167.46	40°06'13.697"N	104°41'34.319"W	0.00	
4983.00†	0.000	179.846	4964.22	-176.16	176.61	167.46	40°06'13.697"N	104°41'34.319"W	0.00	
5083.00†	0.000	179.846	5064.22	-176.16	176.61	167.46	40°06'13.697"N	104°41'34.319"W	0.00	
5183.00†	0.000	179.846	5164.22	-176.16	176.61	167.46	40°06'13.697"N	104°41'34.319"W	0.00	
5283.00†	0.000	179.846	5264.22	-176.16	176.61	167.46	40°06'13.697"N	104°41'34.319"W	0.00	
5383.00†	0.000	179.846	5364.22	-176.16	176.61	167.46	40°06'13.697"N	104°41'34.319"W	0.00	
5483.00†	0.000	179.846	5464.22	-176.16	176.61	167.46	40°06'13.697"N	104°41'34.319"W	0.00	
5583.00†	0.000	179.846	5564.22	-176.16	176.61	167.46	40°06'13.697"N	104°41'34.319"W	0.00	
5683.00†	0.000	179.846	5664.22	-176.16	176.61	167.46	40°06'13.697"N	104°41'34.319"W	0.00	
5783.00†	0.000	179.846	5764.22	-176.16	176.61	167.46	40°06'13.697"N	104°41'34.319"W	0.00	
5883.00†	0.000	179.846	5864.22	-176.16	176.61	167.46	40°06'13.697"N	104°41'34.319"W	0.00	
5983.00†	0.000	179.846	5964.22	-176.16	176.61	167.46	40°06'13.697"N	104°41'34.319"W	0.00	
6083.00†	0.000	179.846	6064.22	-176.16	176.61	167.46	40°06'13.697"N	104°41'34.319"W	0.00	
6183.00†	0.000	179.846	6164.22	-176.16	176.61	167.46	40°06'13.697"N	104°41'34.319"W	0.00	
6283.00†	0.000	179.846	6264.22	-176.16	176.61	167.46	40°06'13.697"N	104°41'34.319"W	0.00	
6383.00†	0.000	179.846	6364.22	-176.16	176.61	167.46	40°06'13.697"N	104°41'34.319"W	0.00	
6483.00†	0.000	179.846	6464.22	-176.16	176.61	167.46	40°06'13.697"N	104°41'34.319"W	0.00	
6583.00†	0.000	179.846	6564.22	-176.16	176.61	167.46	40°06'13.697"N	104°41'34.319"W	0.00	
6683.00†	0.000	179.846	6664.22	-176.16	176.61	167.46	40°06'13.697"N	104°41'34.319"W	0.00	
6762.82	0.000	179.846	6744.04	-176.16	176.61	167.46	40°06'13.697"N	104°41'34.319"W	0.00	KOP, BUILD @ 10°/100'
6783.00†	2.018	179.847	6764.22	-175.81	176.26	167.46	40°06'13.694"N	104°41'34.319"W	10.00	
6883.00†	12.018	179.847	6863.34	-163.60	164.05	167.49	40°06'13.573"N	104°41'34.318"W	10.00	
6973.49†	21.067	179.846	6950.00	-137.86	138.31	167.56	40°06'13.319"N	104°41'34.318"W	10.00	SSPG
6983.00†	22.018	179.847	6958.84	-134.37	134.82	167.57	40°06'13.284"N	104°41'34.317"W	10.00	
7029.28†	26.646	179.847	7001.00	-115.31	115.76	167.62	40°06'13.096"N	104°41'34.317"W	10.00	NBRR
7083.00†	32.018	179.847	7047.81	-89.00	89.46	167.69	40°06'12.836"N	104°41'34.316"W	10.00	
7112.00†	34.917	179.847	7072.00	-73.02	73.47	167.74	40°06'12.678"N	104°41'34.315"W	10.00	N470_B_CK
7183.00†	42.018	179.846	7127.56	-28.87	29.33	167.85	40°06'12.242"N	104°41'34.314"W	10.00	
7201.36†	43.854	179.846	7141.00	-16.37	16.82	167.89	40°06'12.118"N	104°41'34.313"W	10.00	N700_C_CK
7283.00†	52.018	179.846	7195.65	44.19	-43.74	168.05	40°06'11.520"N	104°41'34.311"W	10.00	

# Planned Wellpath Report

SUMMIT 13C-32HZ PWP (REV-A.0)

Page 4 of 7

## REFERENCE WELLPATH IDENTIFICATION

Operator	KERR-MCGEE OIL & GAS ONSHORE LP	Slot	SLOT#13 SUMMIT 13C-32HZ (395'FSL & 1031'FWL, SEC.29)
Area	COLORADO	Well	SUMMIT 13C-32HZ
Field	WELD COUNTY (KERR MCGEE)	Wellbore	SUMMIT 13C-32HZ PWB
Facility	SEC.29-T2N-R65W		

## WELLPATH DATA (151 stations) † = interpolated/extrapolated station

MD [ft]	Inclination [°]	Azimuth [°]	TVD [ft]	Vert Sect [ft]	North [ft]	East [ft]	Latitude	Longitude	DLS [°/100ft]	Comments
7383.00†	62.018	179.847	7250.02	127.97	-127.52	168.27	40°06'10.692"N	104°41'34.308"W	10.00	
7476.59†	71.377	179.847	7287.00	213.83	-213.38	168.51	40°06'09.843"N	104°41'34.306"W	10.00	FRHS
7483.00†	72.018	179.846	7289.01	219.91	-219.46	168.52	40°06'09.783"N	104°41'34.305"W	10.00	
7579.83†	81.701	179.847	7311.00	314.09	-313.64	168.77	40°06'08.853"N	104°41'34.302"W	10.00	CDLL
7583.00†	82.018	179.846	7311.45	317.23	-316.78	168.78	40°06'08.822"N	104°41'34.302"W	10.00	
7662.82	90.000	179.846	7317.00	396.80	-396.34	169.00	40°06'08.035"N	104°41'34.299"W	10.00	LANDING POINT
7683.00†	90.000	179.846	7317.00	416.98	-416.52	169.05	40°06'07.836"N	104°41'34.299"W	0.00	
7783.00†	90.000	179.846	7317.00	516.98	-516.52	169.32	40°06'06.848"N	104°41'34.295"W	0.00	
7883.00†	90.000	179.846	7317.00	616.98	-616.52	169.59	40°06'05.859"N	104°41'34.292"W	0.00	
7983.00†	90.000	179.846	7317.00	716.98	-716.52	169.85	40°06'04.871"N	104°41'34.288"W	0.00	
8083.00†	90.000	179.846	7317.00	816.98	-816.52	170.12	40°06'03.883"N	104°41'34.285"W	0.00	
8183.00†	90.000	179.846	7317.00	916.98	-916.52	170.39	40°06'02.895"N	104°41'34.281"W	0.00	
8283.00†	90.000	179.846	7317.00	1016.98	-1016.52	170.66	40°06'01.907"N	104°41'34.278"W	0.00	
8383.00†	90.000	179.846	7317.00	1116.98	-1116.52	170.93	40°06'00.918"N	104°41'34.274"W	0.00	
8483.00†	90.000	179.846	7317.00	1216.98	-1216.52	171.19	40°05'59.930"N	104°41'34.271"W	0.00	
8583.00†	90.000	179.846	7317.00	1316.98	-1316.52	171.46	40°05'58.942"N	104°41'34.268"W	0.00	
8683.00†	90.000	179.846	7317.00	1416.98	-1416.52	171.73	40°05'57.954"N	104°41'34.264"W	0.00	
8783.00†	90.000	179.846	7317.00	1516.98	-1516.52	172.00	40°05'56.966"N	104°41'34.261"W	0.00	
8883.00†	90.000	179.846	7317.00	1616.98	-1616.52	172.27	40°05'55.977"N	104°41'34.257"W	0.00	
8983.00†	90.000	179.846	7317.00	1716.98	-1716.52	172.53	40°05'54.989"N	104°41'34.254"W	0.00	
9083.00†	90.000	179.846	7317.00	1816.98	-1816.52	172.80	40°05'54.001"N	104°41'34.250"W	0.00	
9183.00†	90.000	179.846	7317.00	1916.98	-1916.52	173.07	40°05'53.013"N	104°41'34.247"W	0.00	
9283.00†	90.000	179.846	7317.00	2016.98	-2016.52	173.34	40°05'52.024"N	104°41'34.243"W	0.00	
9383.00†	90.000	179.846	7317.00	2116.98	-2116.52	173.61	40°05'51.036"N	104°41'34.240"W	0.00	
9483.00†	90.000	179.846	7317.00	2216.98	-2216.52	173.87	40°05'50.048"N	104°41'34.237"W	0.00	
9583.00†	90.000	179.846	7317.00	2316.98	-2316.52	174.14	40°05'49.060"N	104°41'34.233"W	0.00	
9683.00†	90.000	179.846	7317.00	2416.98	-2416.52	174.41	40°05'48.072"N	104°41'34.230"W	0.00	
9783.00†	90.000	179.846	7317.00	2516.98	-2516.51	174.68	40°05'47.083"N	104°41'34.226"W	0.00	
9883.00†	90.000	179.846	7317.00	2616.98	-2616.51	174.95	40°05'46.095"N	104°41'34.223"W	0.00	
9983.00†	90.000	179.846	7317.00	2716.98	-2716.51	175.22	40°05'45.107"N	104°41'34.219"W	0.00	
10083.00†	90.000	179.846	7317.00	2816.98	-2816.51	175.48	40°05'44.119"N	104°41'34.216"W	0.00	
10183.00†	90.000	179.846	7317.00	2916.98	-2916.51	175.75	40°05'43.131"N	104°41'34.213"W	0.00	
10283.00†	90.000	179.846	7317.00	3016.98	-3016.51	176.02	40°05'42.142"N	104°41'34.209"W	0.00	
10383.00†	90.000	179.846	7317.00	3116.98	-3116.51	176.29	40°05'41.154"N	104°41'34.206"W	0.00	
10483.00†	90.000	179.846	7317.00	3216.98	-3216.51	176.56	40°05'40.166"N	104°41'34.202"W	0.00	
10583.00†	90.000	179.846	7317.00	3316.98	-3316.51	176.82	40°05'39.178"N	104°41'34.199"W	0.00	
10683.00†	90.000	179.846	7317.00	3416.98	-3416.51	177.09	40°05'38.190"N	104°41'34.195"W	0.00	
10783.00†	90.000	179.846	7317.00	3516.98	-3516.51	177.36	40°05'37.201"N	104°41'34.192"W	0.00	
10883.00†	90.000	179.846	7317.00	3616.98	-3616.51	177.63	40°05'36.213"N	104°41'34.188"W	0.00	
10983.00†	90.000	179.846	7317.00	3716.98	-3716.51	177.90	40°05'35.225"N	104°41'34.185"W	0.00	
11083.00†	90.000	179.846	7317.00	3816.98	-3816.51	178.17	40°05'34.237"N	104°41'34.182"W	0.00	
11183.00†	90.000	179.846	7317.00	3916.98	-3916.51	178.44	40°05'33.248"N	104°41'34.178"W	0.00	
11283.00†	90.000	179.846	7317.00	4016.98	-4016.51	178.70	40°05'32.260"N	104°41'34.175"W	0.00	
11383.00†	90.000	179.846	7317.00	4116.98	-4116.51	178.97	40°05'31.272"N	104°41'34.171"W	0.00	
11483.00†	90.000	179.846	7317.00	4216.98	-4216.51	179.24	40°05'30.284"N	104°41'34.168"W	0.00	



# Planned Wellpath Report

SUMMIT 13C-32HZ PWP (REV-A.0)

Page 5 of 7

## REFERENCE WELLPATH IDENTIFICATION

Operator	KERR-MCGEE OIL & GAS ONSHORE LP	Slot	SLOT#13 SUMMIT 13C-32HZ (395'FSL & 1031'FWL, SEC.29)
Area	COLORADO	Well	SUMMIT 13C-32HZ
Field	WELD COUNTY (KERR MCGEE)	Wellbore	SUMMIT 13C-32HZ PWB
Facility	SEC.29-T2N-R65W		

## WELLPATH DATA (151 stations) † = interpolated/extrapolated station

MD [ft]	Inclination [°]	Azimuth [°]	TVD [ft]	Vert Sect [ft]	North [ft]	East [ft]	Latitude	Longitude	DLS [°/100ft]	Comments
11583.00†	90.000	179.846	7317.00	4316.98	-4316.51	179.51	40°05'29.296"N	104°41'34.164"W	0.00	
11683.00†	90.000	179.846	7317.00	4416.98	-4416.51	179.78	40°05'28.307"N	104°41'34.161"W	0.00	
11783.00†	90.000	179.846	7317.00	4516.98	-4516.51	180.05	40°05'27.319"N	104°41'34.157"W	0.00	
11883.00†	90.000	179.846	7317.00	4616.98	-4616.51	180.31	40°05'26.331"N	104°41'34.154"W	0.00	
11983.00†	90.000	179.846	7317.00	4716.98	-4716.51	180.58	40°05'25.343"N	104°41'34.151"W	0.00	
12083.00†	90.000	179.846	7317.00	4816.98	-4816.51	180.85	40°05'24.355"N	104°41'34.147"W	0.00	
12183.00†	90.000	179.846	7317.00	4916.98	-4916.51	181.12	40°05'23.366"N	104°41'34.144"W	0.00	
12283.00†	90.000	179.846	7317.00	5016.98	-5016.51	181.39	40°05'22.378"N	104°41'34.140"W	0.00	
12383.00†	90.000	179.846	7317.00	5116.98	-5116.51	181.66	40°05'21.390"N	104°41'34.137"W	0.00	
12483.00†	90.000	179.846	7317.00	5216.98	-5216.50	181.93	40°05'20.402"N	104°41'34.133"W	0.00	
12583.00†	90.000	179.846	7317.00	5316.98	-5316.50	182.19	40°05'19.413"N	104°41'34.130"W	0.00	
12683.00†	90.000	179.846	7317.00	5416.98	-5416.50	182.46	40°05'18.425"N	104°41'34.126"W	0.00	
12783.00†	90.000	179.846	7317.00	5516.98	-5516.50	182.73	40°05'17.437"N	104°41'34.123"W	0.00	
12883.00†	90.000	179.846	7317.00	5616.98	-5616.50	183.00	40°05'16.449"N	104°41'34.119"W	0.00	
12983.00†	90.000	179.846	7317.00	5716.98	-5716.50	183.27	40°05'15.461"N	104°41'34.116"W	0.00	
12984.07	90.000	179.846	7317.00 <sup>1</sup>	5718.05	-5717.58	183.27	40°05'15.450"N	104°41'34.116"W	0.00	TOTAL DEPTH

## HOLE & CASING SECTIONS - Ref Wellbore: SUMMIT 13C-32HZ PWB Ref Wellpath: SUMMIT 13C-32HZ PWP (REV-A.0)

String/Diameter	Start MD [ft]	End MD [ft]	Interval [ft]	Start TVD [ft]	End TVD [ft]	Start N/S [ft]	Start E/W [ft]	End N/S [ft]	End E/W [ft]
13.5in Open Hole	16.00	1128.00	1112.00	16.00	1127.98	0.00	0.00	2.09	-3.14
9.625in Casing	16.00	1117.25	1101.25	16.00	1117.23	0.00	0.00	1.99	-3.10
8.75in Open Hole	1128.00	7662.82	6534.82	1127.98	7317.00	2.09	-3.14	-396.34	169.00
7in Casing Intermediate	16.00	7662.82	7646.82	16.00	7317.00	0.00	0.00	-396.34	169.00
6.125in Open Hole	7662.82	12984.07	5321.25	7317.00	7317.00	-396.34	169.00	-5717.58	183.27
4.5in Casing Production	16.00	12984.07	12968.07	16.00	7317.00	0.00	0.00	-5717.58	183.27

# Planned Wellpath Report

SUMMIT 13C-32HZ PWP (REV-A.0)

Page 6 of 7

REFERENCE WELLPATH IDENTIFICATION			
Operator	KERR-MCGEE OIL & GAS ONSHORE LP	Slot	SLOT#13 SUMMIT 13C-32HZ (395'FSL & 1031'FWL, SEC.29)
Area	COLORADO	Well	SUMMIT 13C-32HZ
Field	WELD COUNTY (KERR MCGEE)	Wellbore	SUMMIT 13C-32HZ PWB
Facility	SEC.29-T2N-R65W		

TARGETS									
Name	MD [ft]	TVD [ft]	North [ft]	East [ft]	Grid East [US ft]	Grid North [US ft]	Latitude	Longitude	Shape
SEC.29-T2N-R65W SECTION LINES		7118.00	0.41	309.97	3225918.18	1281513.05	40°06'11.956"N	104°41'32.485"W	polygon
SEC.32-T2N-R65W SECTION LINES		7118.00	0.41	309.97	3225918.18	1281513.05	40°06'11.956"N	104°41'32.485"W	polygon
1) SUMMIT 13C-32HZ BHL ON PLAT (1'FSL & 1200'FWL, SEC.32)	12984.07	7317.00	-5717.58	183.27	3225843.50	1275794.39	40°05'15.450"N	104°41'34.116"W	point
SUMMIT 13C-32HZ LANDBOX		7317.00	0.00	0.00	3225608.24	1281509.82	40°06'11.952"N	104°41'36.474"W	polygon
SEC.29-T2N-R65W HARDLINES (460'SETBACKS)		7343.00	0.00	-149.94	3225458.31	1281508.46	40°06'11.952"N	104°41'38.404"W	polygon
SEC.32-T2N-R65W HARDLINES (460'SETBACKS)		7343.00	0.41	309.97	3225918.18	1281513.05	40°06'11.956"N	104°41'32.485"W	polygon

SURVEY PROGRAM - Ref Wellbore: SUMMIT 13C-32HZ PWB Ref Wellpath: SUMMIT 13C-32HZ PWP (REV-A.0)				
Start MD [ft]	End MD [ft]	Positional Uncertainty Model	Log Name/Comment	Wellbore
16.00	1083.00	ISCWSA MWD, Rev. 2 (Standard)		SUMMIT 13C-32HZ AWB
1083.00	7662.82	NaviTrak (MAGCORR,IFR)		SUMMIT 13C-32HZ PWB
7662.82	12984.07	NaviTrak (MAGCORR,IFR)		SUMMIT 13C-32HZ PWB

# Planned Wellpath Report

SUMMIT 13C-32HZ PWP (REV-A.0)

Page 7 of 7

## REFERENCE WELLPATH IDENTIFICATION

Operator	KERR-MCGEE OIL & GAS ONSHORE LP	Slot	SLOT#13 SUMMIT 13C-32HZ (395'FSL & 1031'FWL, SEC.29)
Area	COLORADO	Well	SUMMIT 13C-32HZ
Field	WELD COUNTY (KERR MCGEE)	Wellbore	SUMMIT 13C-32HZ PWB
Facility	SEC.29-T2N-R65W		

## WELLPATH COMMENTS

MD [ft]	Inclination [°]	Azimuth [°]	TVD [ft]	Comment
975.01	0.577	305.441	975.00	FOX HILLS BASE
4149.78	0.000	179.846	4131.00	PARKMAN
4502.78	0.000	179.846	4484.00	SUSSEX
6973.49	21.067	179.846	6950.00	SSPG
7029.28	26.646	179.847	7001.00	NBRR
7112.00	34.917	179.847	7072.00	N470_B_CK
7201.36	43.854	179.846	7141.00	N700_C_CK
7476.59	71.377	179.847	7287.00	FRHS
7579.83	81.701	179.847	7311.00	CDLL

## DESIGN COMMENTS

MD [ft]	Inclination [°]	Azimuth [°]	TVD [ft]	Comment
1083.00	0.600	336.100	1082.99	TIE-INTO MWD SURVEYS
1300.03	0.600	336.100	1300.00	BEGIN NUDGE
1790.17	10.000	45.310	1787.60	END NUDGE
2690.17	10.000	45.310	2673.93	BEGIN DROP
3190.17	0.000	179.846	3171.39	END DROP
6762.82	0.000	179.846	6744.04	KOP, BUILD @ 10°/100'
7662.82	90.000	179.846	7317.00	LANDING POINT
12984.07	90.000	179.846	7317.00	TOTAL DEPTH