

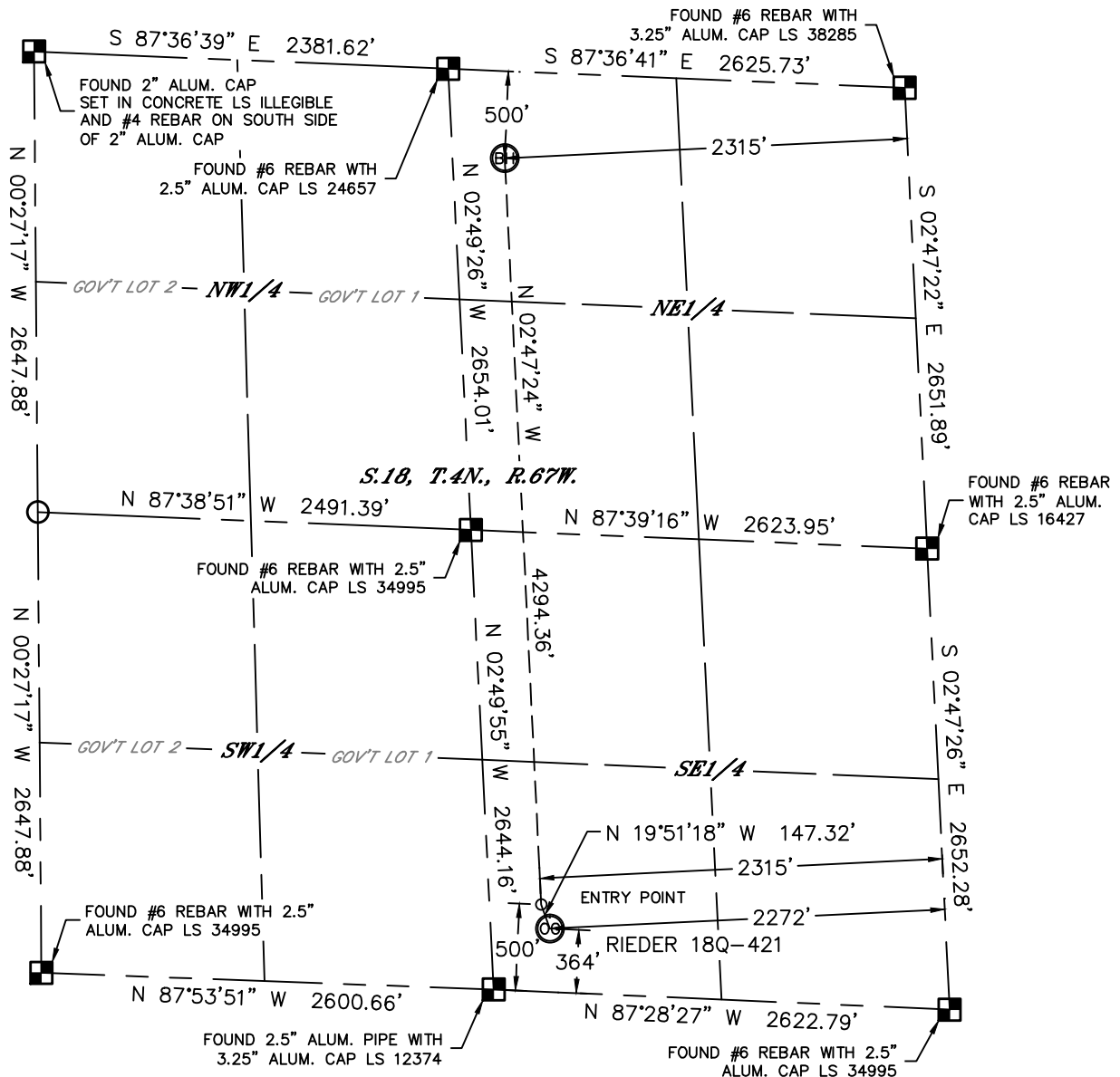


Lat40°, Inc. 1635 Foxtrail Drive, Suite 325 Loveland, CO 970-776-3321

WELL LOCATION CERTIFICATE

THIS MAP DOES NOT REPRESENT A BOUNDARY SURVEY

SECTION: 18
TOWNSHIP: 4N
RANGE: 67W



In accordance with a request from Mac Neumann with PDC ENGERY Lat40°, Inc. has determined the surface location of the RIEDER 18Q-421 to be 364' from the SOUTH line and 2272' from the EAST line and the bottom hole to be 500' from the NORTH line and 2315' from the EAST line as measured at right angles from the section lines of Section 18, Township 4 North, Range 67 West of the Sixth Principal Meridian, County of Weld, State of Colorado.

I hereby state that this Well Location Certificate was prepared by me, or under my direct supervision, that the fieldwork was completed on 6/26/2014, for and on behalf of PDC ENGERY. That this is not a Land Survey Plat or an Improvement Survey Plat, and that it is not to be relied upon for establishment of fence, building, or other future improvement lines.

SURFACE LOCATION

LAT: 40.30721°N
LONG: 104.93124°W
PDOP: 1.7
ELEV: 4812'
1/4,1/4: SWSE

BOTTOM HOLE

LAT: 40.31937°N
LONG: 104.93207°W

ENTRY POINT

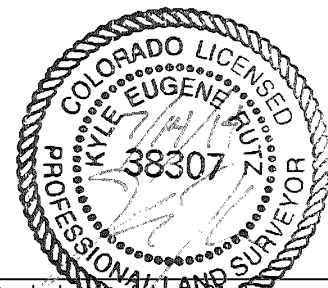
LAT: 40.30759°N
LONG: 104.93142°W

LEGEND

- = ALIQUOT MONUMENT AS DESCRIBED
○ = CALCULATED POSITION

Kyle E. Rutz—On behalf of Lat40°, Inc.
Colorado Licensed Professional
Land Surveyor No. 38307

DATE: 7/14/2014
PROJECT#: 2014019



NOTE:

- 1) Bearings shown are Grid Bearings of the Colorado State Plane Coordinate System, North Zone, North American Datum 1983. The lineal dimensions as contained herein are based upon the "U.S. Survey Foot."
- 2) Ground elevations are based on an observed GPS elevation (NAVD 1988 DATUM).
- 3) IMPROVEMENTS: See LOCATION DRAWING for all visible improvements within 500' of disturbed area.
- 4) SURFACE USE: CROP LAND
- 5) INSTRUMENT OPERATOR: ADAM KELLY
- 6) NEAREST CULTURAL ITEMS:
BUILDING: ±566' SE
BUILDING UNIT: ±780' SE
HIGH OCCUPANCY BUILDING UNIT: 5280'+
DESIGNATED OUTSIDE ACTIVITY AREA: 5280'+
PUBLIC ROAD: (CR 44) 348' S
ABOVEGROUND UTILITY: 391' S
RAILROAD: 5280'+
PROPERTY LINE: 340' S

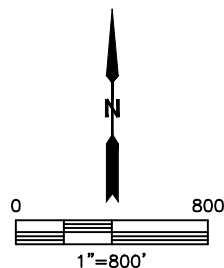
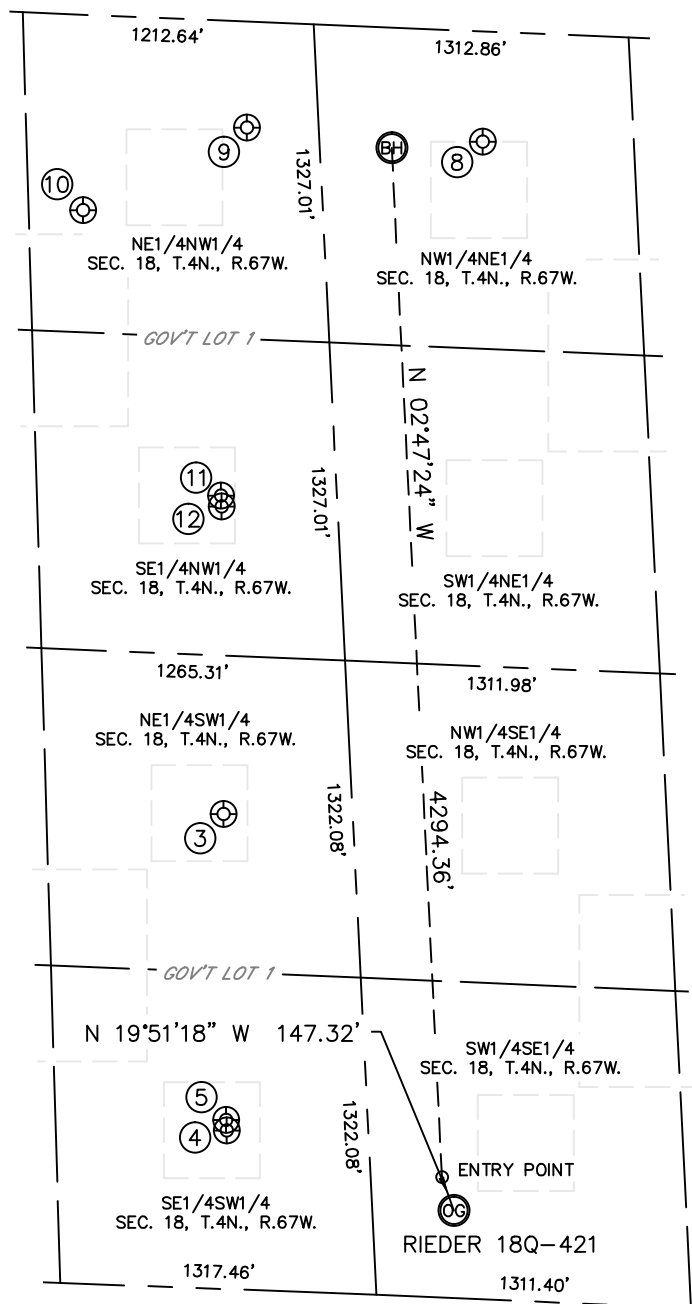


Lat40°, Inc. 1635 Foxtrail Drive, Suite 325 Loveland, CO 970-776-3321

SITE SKETCH

RIEDER 18Q-421

SECTION: 18
TOWNSHIP: 4N
RANGE: 67W



WELL NO.	WELL NAME	SHL FOOTAGE		SHL LAT°	SHL LONG°	PDOP	ELEV (FT.)	1/4/1/4
3	STARCK 11-18	1977	FSL 1977 FWL	40.31176	-104.93465	1.9	4810	NESW
4	STARCK 14-18	660	FSL 1979 FWL	40.30814	-104.93463	2.7	4814	SESW
5	STARCK 23-18	704	FSL 1978 FWL	40.30826	-104.93464	1.7	4813	SESW
8	CARLSON 18-1	460	FNL 1935 FEL	40.31943	-104.93071	2.2	4841	NWNE
9	BEIN 3-18	441	FNL 2097 FWL	40.31961	-104.93423	2.6	4843	NENW
10	BEIN 1	814	FNL 1412 FWL	40.31867	-104.93668	1.9	4835	NENW
11	BEIN 6-18	1977	FNL 1977 FWL	40.31540	-104.93465	1.9	4814	SESW
12	BEIN 22-18	2024	FNL 1979 FWL	40.31527	-104.93464	1.9	4814	SESW

DATE: 7/14/2014
PROJECT#: 2014019