

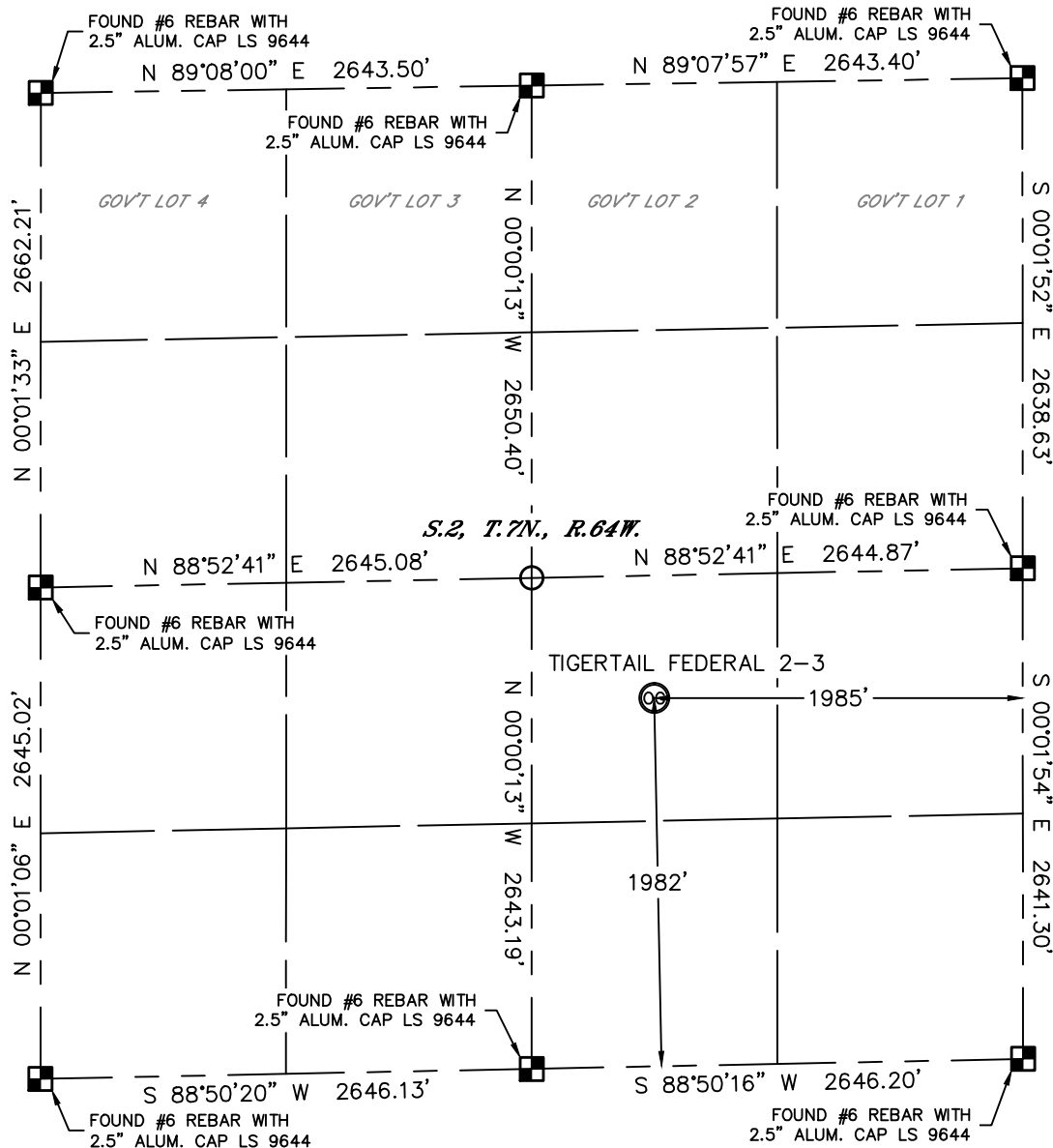


Lat40°, Inc. 1635 Foxtrail Drive, Suite 325 Loveland, CO 970-776-3321

WELL LOCATION CERTIFICATE

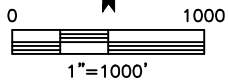
THIS MAP DOES NOT REPRESENT A BOUNDARY SURVEY

SECTION: 2
TOWNSHIP: 7N
RANGE: 64W



In accordance with a request from TERENCE BURNS with GRYNBERG PETROLEUM COMPANY Lat40°, Inc. has determined the surface location of the TIGERTAIL FEDERAL 2-3 to be 1982' from the SOUTH line and 1985' from the EAST line as measured at right angles from the section lines of Section 2, Township 7 North, Range 64 West of the Sixth Principal Meridian, County of Weld, State of Colorado.

I hereby state that this Well Location Certificate was prepared by me, or under my direct supervision, that the fieldwork was completed on 5/27/2014, for and on behalf of GRYNBERG PETROLEUM COMPANY That this is not a Land Survey Plat or an Improvement Survey Plat, and that it is not to be relied upon for establishment of fence, building, or other future improvement lines.



NOTE:

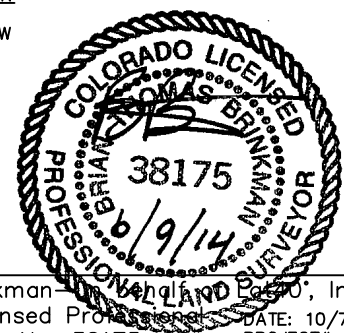
- 1) Bearings shown are Grid Bearings of the Colorado State Plane Coordinate System, North Zone, North American Datum 1983. The lineal dimensions as contained herein are based upon the "U.S. Survey Foot."
- 2) Ground elevations are based on an observed GPS elevation (NAVD 1988 DATUM).
- 3) IMPROVEMENTS: See LOCATION DRAWING for all visible improvements within 500' of disturbed area.
- 4) SURFACE USE: RANGELAND
- 5) INSTRUMENT OPERATOR: WYATT HALL
- 6) NEAREST CULTURAL ITEMS:
BUILDING: 5280'+
BUILDING UNIT: 5280'+
HIGH OCCUPANCY BUILDING UNIT: 5280'+
DESIGNATED OUTSIDE ACTIVITY AREA: 5280'+
PUBLIC ROAD: ±1.6 MILES N (CR 88), ±1964' E (ACCESS RD)
ABOVEGROUND UTILITY: 1945' S
RAILROAD: 5280'+
PROPERTY LINE: 660' W

LEGEND

- = ALIQUOT MONUMENT AS DESCRIBED
○ = CALCULATED POSITION

SURFACE LOCATION

LAT: 40.60040°N
LONG: 104.51376°W
PDOP: 1.3
ELEV: 4887'
1/4,1/4: NWSE



Brian T. Brinkman—Lat40°, Inc.
Colorado Licensed Professional
Land Surveyor No. 38175
DATE: 10/7/2014
PROJECT#: 2014081