



1.) Pad entrance sign.



2.) Rilling on Fill below access sign, uphill from access road on South Side.



3.) View from North pad corner of Southern cut (vegetation at approximately 20%).



4.) 5 cellar holes/ conductors fenced.



5.) Wellhead sign down and laid against adjacent head.



6.) Unused equipment (1) by pad entrance.



7.) Unused equipment (2) on North perimeter.



8.) Unused equipment (3) at tanks.



9.) Unused equipment (4) on Southeast perimeter.



10.) West perimeter fill: re-vegetation at approximately 20%.



11.) West sediment BMPs acceptable.



12.) Southwest corner sediment BMP will need velocity reduction/ sediment detention in near future (1).



13.) Access road to cattle/ grazing on Southwest corner.



14.) Unused area on Southwest corner not reclaimed.



15.) Southwest corner (East side) sediment BMP will need velocity reduction/ sediment detention in near future (2).



16.) East perimeter BMP needs maintenance.



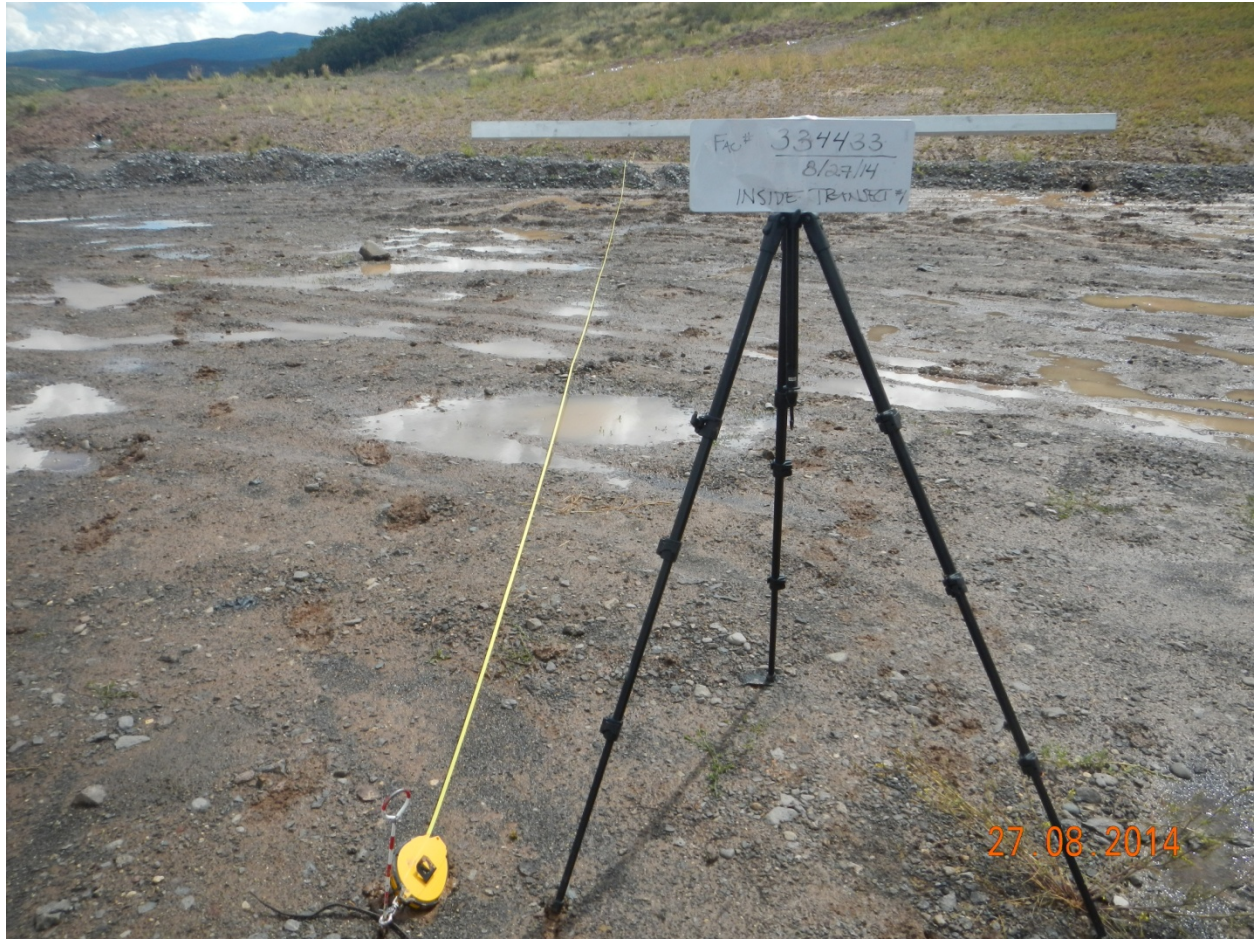
17.) Eastern perimeter cut sloughing, rilling and sediment.



18.) Northeastern BMP needs velocity reduction/ sediment detention.



19.) Pad from Northern disturbed appendage looking Southwest. Stormwater BMPs need velocity reduction/ sediment detention.



20.) Inside Transect Start Point.



21.) Inside Transect Midpoint (perpendicular #1, facing North).



22.) Inside Transect Midpoint (perpendicular #2, facing South).



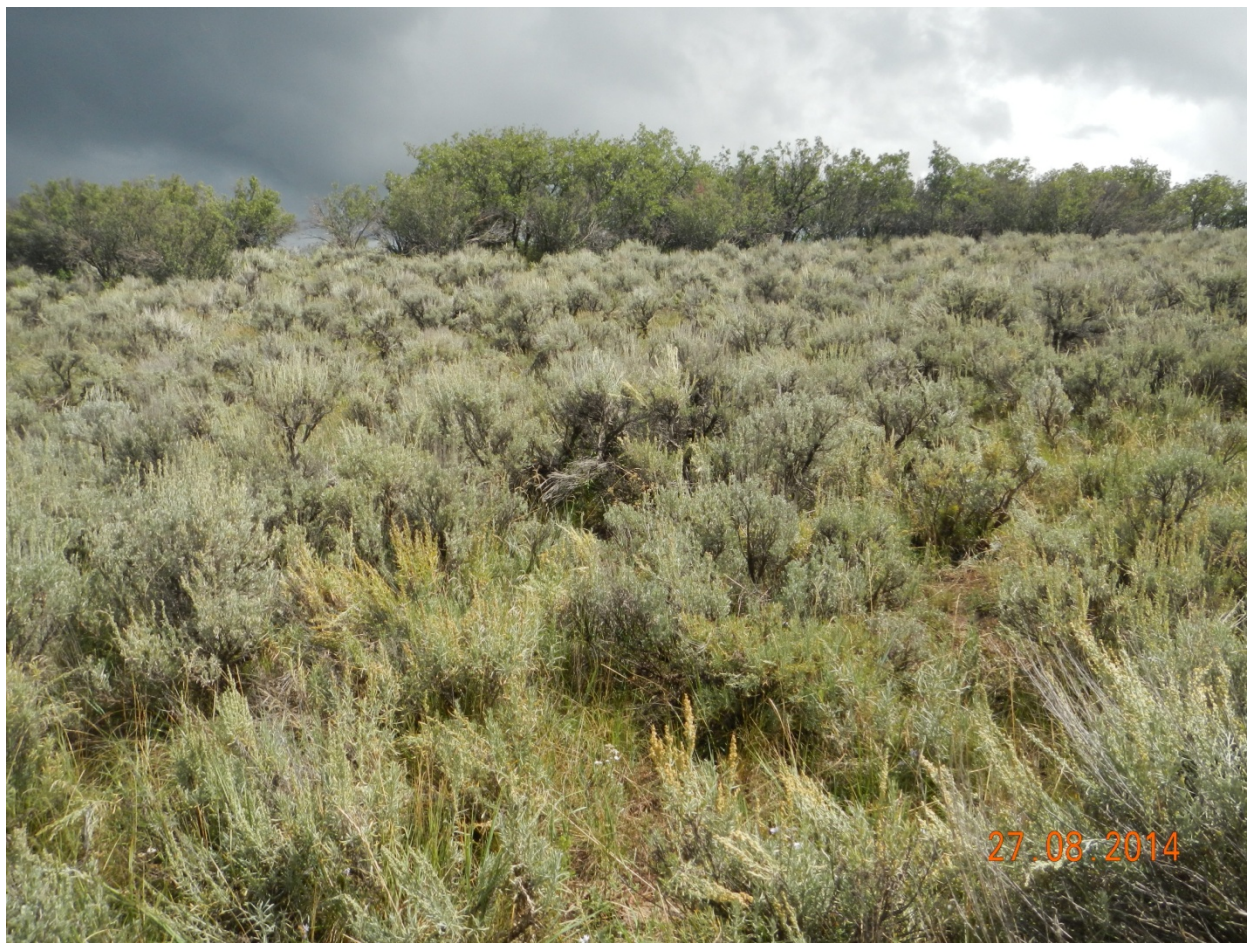
23.) Inside Transect Endpoint.



24.) Outside Transect Start Point.



25.) Outside Transect Midpoint (perpendicular #1, facing West).



26.) Outside Transect Midpoint (perpendicular #1, facing East).



27.) Outside Transect Endpoint.