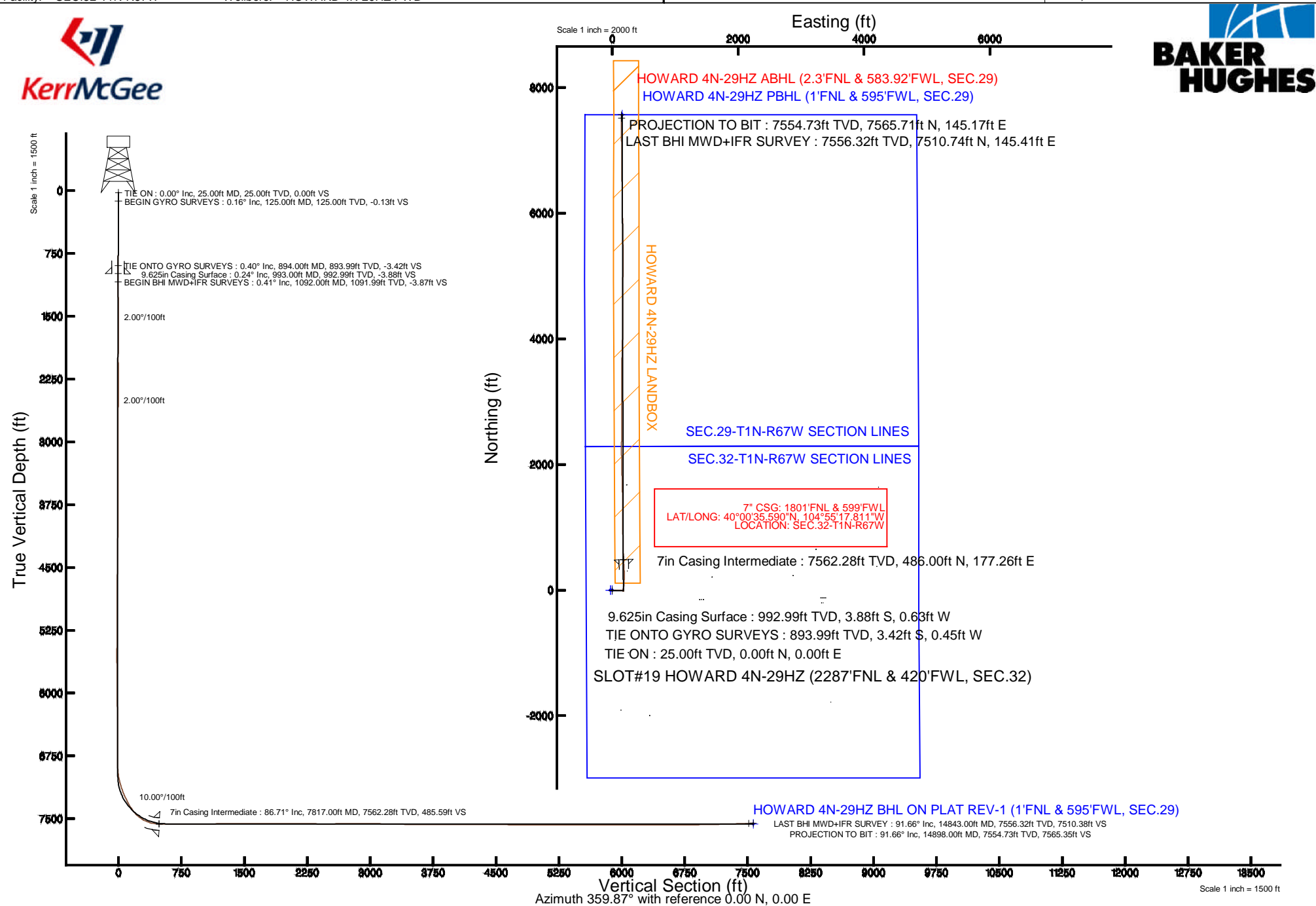


Location:	COLORADO	Slot:	SLOT#19 HOWARD 4N-29HZ (2287'FNL & 420'FWL, SEC.32)
Field:	WELD COUNTY (KERR MCGEE)	Well:	HOWARD 4N-29HZ
Facility:	SEC.32-T1N-R67W	Wellbore:	HOWARD 4N-29HZ PWB

True vertical depths are referenced to PRECISION 595 (25KB) (RKB)	Grid System: NAD83 / Lambert Colorado SP, Northern Zone (501), US feet
Measured depths are referenced to PRECISION 595 (25KB) (RKB)	North Reference: True north
PRECISION 595 (25KB) (RKB) to Mean Sea Level: 5056 feet	Scale: True distance
Mean Sea Level to Mud line (At Slot: SLOT#19 HOWARD 4N-29HZ (2287FNL & 420FWL, SEC.32): 0 feet	Depths are in feet
Coordinates are in feet referenced to Slot	Created by: robale01 on 9/5/2014



REFERENCE WELLPATH IDENTIFICATION			
Operator	KERR-MCGEE OIL & GAS ONSHORE LP	Slot	SLOT#19 HOWARD 4N-29HZ (2287'FNL & 420'FWL, SEC.32)
Area	COLORADO	Well	HOWARD 4N-29HZ
Field	WELD COUNTY (KERR MCGEE)	Wellbore	HOWARD 4N-29HZ AWB
Facility	SEC.32-T1N-R67W		

REPORT SETUP INFORMATION			
Projection System	NAD83 / Lambert Colorado SP, Northern Zone (501), US feet	Software System	WellArchitect® 4.0.0
North Reference	True	User	Robiale01
Scale	0.999966	Report Generated	9/5/2014 at 3:07:42 PM
Convergence at slot	n/a	Database/Source file	WellArchitectDB/HOWARD_4N-29HZ_AWB.xml

WELLPATH LOCATION						
	Local coordinates		Grid coordinates		Geographic coordinates	
	North[ft]	East[ft]	Easting[US ft]	Northing[US ft]	Latitude	Longitude
Slot Location	202.00	-3322.87	3161838.15	1246489.30	40°00'30.787"N	104°55'20.089"W
Facility Reference Pt			3165162.17	1246309.41	40°00'28.793"N	104°54'37.386"W
Field Reference Pt			3197771.84	1268891.29	40°04'09.600"N	104°47'36.000"W

WELLPATH DATUM			
Calculation method	Minimum curvature	PRECISION 595 (25'KB) (RKB) to Facility Vertical Datum	5056.00ft
Horizontal Reference Pt	Slot	PRECISION 595 (25'KB) (RKB) to Mean Sea Level	5056.00ft
Vertical Reference Pt	PRECISION 595 (25'KB) (RKB)	PRECISION 595 (25'KB) (RKB) to Mud Line at Slot (SLOT#19 HOWARD 4N-29HZ (2287'FNL & 420'FWL, SEC.32))	5056.00ft
MD Reference Pt	PRECISION 595 (25'KB) (RKB)	Section Origin	N 0.00, E 0.00 ft
Field Vertical Reference	Mean Sea Level	Section Azimuth	1.10°

REFERENCE WELLPATH IDENTIFICATION			
Operator	KERR-MCGEE OIL & GAS ONSHORE LP	Slot	SLOT#19 HOWARD 4N-29HZ (2287'FNL & 420'FWL, SEC.32)
Area	COLORADO	Well	HOWARD 4N-29HZ
Field	WELD COUNTY (KERR MCGEE)	Wellbore	HOWARD 4N-29HZ AWB
Facility	SEC.32-T1N-R67W		

WELLPATH DATA (117 stations) † = interpolated/extrapolated station										
MD [ft]	Inclination [°]	Azimuth [°]	TVD [ft]	Vert Sect [ft]	North [ft]	East [ft]	Latitude	Longitude	DLS [°/100ft]	Comments
0.00†	0.000	164.770	0.00	0.00	0.00	0.00	40°00'30.787"N	104°55'20.089"W	0.00	
25.00	0.000	164.770	25.00	0.00	0.00	0.00	40°00'30.787"N	104°55'20.089"W	0.00	TIE ON
125.00	0.160	164.770	125.00	-0.13	-0.13	0.04	40°00'30.786"N	104°55'20.089"W	0.16	BEGIN GYRO SURVEYS
225.00	0.330	179.280	225.00	-0.56	-0.56	0.08	40°00'30.781"N	104°55'20.088"W	0.18	
325.00	0.220	177.640	325.00	-1.04	-1.04	0.09	40°00'30.777"N	104°55'20.088"W	0.11	
425.00	0.170	197.590	425.00	-1.37	-1.37	0.05	40°00'30.773"N	104°55'20.088"W	0.08	
525.00	0.280	190.840	525.00	-1.75	-1.75	-0.04	40°00'30.770"N	104°55'20.090"W	0.11	
625.00	0.300	179.160	625.00	-2.25	-2.25	-0.08	40°00'30.765"N	104°55'20.090"W	0.06	
725.00	0.250	211.860	724.99	-2.70	-2.70	-0.19	40°00'30.760"N	104°55'20.091"W	0.16	
825.00	0.220	205.870	824.99	-3.07	-3.06	-0.39	40°00'30.757"N	104°55'20.094"W	0.04	
894.00	0.400	180.840	893.99	-3.43	-3.42	-0.45	40°00'30.753"N	104°55'20.095"W	0.32	TIE ONTO GYRO SURVEYS
1092.00	0.410	289.870	1091.99	-3.89	-3.87	-1.13	40°00'30.749"N	104°55'20.104"W	0.33	BEGIN BHI MWD+IFR SURVEYS
1187.00	0.490	49.140	1186.99	-3.51	-3.49	-1.14	40°00'30.753"N	104°55'20.104"W	0.82	
1282.00	0.780	49.380	1281.98	-2.81	-2.80	-0.34	40°00'30.759"N	104°55'20.093"W	0.31	
1376.00	1.840	93.800	1375.96	-2.45	-2.48	1.65	40°00'30.762"N	104°55'20.068"W	1.48	
1471.00	3.240	86.860	1470.86	-2.33	-2.44	5.85	40°00'30.763"N	104°55'20.014"W	1.51	
1566.00	4.000	87.160	1565.67	-1.90	-2.13	11.84	40°00'30.766"N	104°55'19.937"W	0.80	
1660.00	5.630	92.210	1659.34	-1.76	-2.14	19.72	40°00'30.766"N	104°55'19.836"W	1.79	
1755.00	6.290	87.370	1753.82	-1.52	-2.08	29.58	40°00'30.766"N	104°55'19.709"W	0.87	
1850.00	6.760	93.140	1848.21	-1.38	-2.15	40.36	40°00'30.766"N	104°55'19.570"W	0.85	
1944.00	7.660	91.940	1941.47	-1.67	-2.67	52.15	40°00'30.761"N	104°55'19.419"W	0.97	
2039.00	8.110	88.780	2035.57	-1.49	-2.74	65.17	40°00'30.760"N	104°55'19.251"W	0.66	
2134.00	7.450	84.260	2129.69	-0.48	-1.98	78.00	40°00'30.767"N	104°55'19.087"W	0.95	
2229.00	8.480	88.470	2223.78	0.57	-1.18	91.13	40°00'30.775"N	104°55'18.918"W	1.25	
2323.00	7.970	87.140	2316.81	1.34	-0.67	104.57	40°00'30.780"N	104°55'18.745"W	0.58	
2418.00	8.480	95.460	2410.84	1.26	-1.00	118.12	40°00'30.777"N	104°55'18.571"W	1.36	
2513.00	7.630	93.130	2504.90	0.51	-2.01	131.39	40°00'30.767"N	104°55'18.400"W	0.96	
2607.00	7.430	92.910	2598.09	0.09	-2.66	143.69	40°00'30.761"N	104°55'18.242"W	0.21	
2702.00	6.930	89.540	2692.34	0.06	-2.93	155.56	40°00'30.758"N	104°55'18.090"W	0.69	
2797.00	4.560	96.270	2786.86	-0.13	-3.30	165.04	40°00'30.754"N	104°55'17.968"W	2.59	
2891.00	2.380	97.090	2880.68	-0.67	-3.95	170.70	40°00'30.748"N	104°55'17.895"W	2.32	
2985.00	0.680	93.710	2974.64	-0.90	-4.22	173.19	40°00'30.745"N	104°55'17.863"W	1.81	
3344.00	0.640	85.680	3333.62	-0.81	-4.21	177.31	40°00'30.745"N	104°55'17.810"W	0.03	
3792.00	0.250	221.800	3781.61	-1.31	-4.75	179.16	40°00'30.740"N	104°55'17.787"W	0.19	
4242.00	1.030	222.530	4231.58	-5.09	-8.46	175.77	40°00'30.703"N	104°55'17.830"W	0.17	
4691.00	0.650	220.010	4680.53	-10.10	-13.39	171.40	40°00'30.655"N	104°55'17.886"W	0.09	
4869.00	0.740	53.440	4858.53	-10.18	-13.48	171.68	40°00'30.654"N	104°55'17.883"W	0.78	
5229.00	0.610	203.580	5218.52	-10.53	-13.85	172.78	40°00'30.650"N	104°55'17.869"W	0.36	
5408.00	1.210	156.940	5397.50	-13.13	-16.46	173.14	40°00'30.624"N	104°55'17.864"W	0.51	
5588.00	0.490	54.670	5577.48	-14.41	-17.76	174.51	40°00'30.611"N	104°55'17.846"W	0.78	
5947.00	0.690	337.490	5936.47	-11.52	-14.88	174.93	40°00'30.640"N	104°55'17.841"W	0.21	
6307.00	0.610	333.330	6296.44	-7.84	-11.16	173.24	40°00'30.677"N	104°55'17.863"W	0.03	
6666.00	0.310	319.650	6655.43	-5.42	-8.72	171.76	40°00'30.701"N	104°55'17.882"W	0.09	
6755.00	0.130	285.080	6744.43	-5.21	-8.51	171.50	40°00'30.703"N	104°55'17.885"W	0.24	
6845.00	0.180	278.690	6834.43	-5.17	-8.46	171.27	40°00'30.703"N	104°55'17.888"W	0.06	

REFERENCE WELLPATH IDENTIFICATION			
Operator	KERR-MCGEE OIL & GAS ONSHORE LP	Slot	SLOT#19 HOWARD 4N-29HZ (2287'FNL & 420'FWL, SEC.32)
Area	COLORADO	Well	HOWARD 4N-29HZ
Field	WELD COUNTY (KERR MCGEE)	Wellbore	HOWARD 4N-29HZ AWB
Facility	SEC.32-T1N-R67W		

WELLPATH DATA (117 stations) † = interpolated/extrapolated station										
MD [ft]	Inclination [°]	Azimuth [°]	TVD [ft]	Vert Sect [ft]	North [ft]	East [ft]	Latitude	Longitude	DLS [°/100ft]	Comments
6890.00	0.570	343.390	6879.43	-4.95	-8.23	171.13	40°00'30.706"N	104°55'17.890"W	1.15	
6935.00	4.160	1.860	6924.39	-3.10	-6.39	171.12	40°00'30.724"N	104°55'17.890"W	8.05	
6980.00	8.000	5.330	6969.12	1.66	-1.63	171.47	40°00'30.771"N	104°55'17.885"W	8.57	
7025.00	11.370	6.540	7013.48	9.20	5.89	172.26	40°00'30.845"N	104°55'17.875"W	7.50	
7070.00	14.220	5.170	7057.35	19.13	15.81	173.27	40°00'30.943"N	104°55'17.862"W	6.37	
7115.00	16.360	11.970	7100.76	30.87	27.51	175.08	40°00'31.059"N	104°55'17.839"W	6.20	
7159.00	19.470	10.470	7142.62	44.19	40.79	177.70	40°00'31.190"N	104°55'17.805"W	7.14	
7204.00	21.680	6.880	7184.75	59.86	56.42	180.06	40°00'31.345"N	104°55'17.775"W	5.65	
7249.00	23.850	2.310	7226.25	77.23	73.76	181.42	40°00'31.516"N	104°55'17.758"W	6.22	
7294.00	26.720	0.010	7266.93	96.45	92.98	181.79	40°00'31.706"N	104°55'17.753"W	6.74	
7339.00	29.100	2.830	7306.70	117.50	114.03	182.33	40°00'31.914"N	104°55'17.746"W	6.05	
7384.00	29.960	4.430	7345.85	139.66	136.16	183.74	40°00'32.133"N	104°55'17.728"W	2.59	
7429.00	33.940	6.730	7384.03	163.39	159.85	186.08	40°00'32.367"N	104°55'17.698"W	9.25	
7474.00	39.270	2.900	7420.15	190.15	186.57	188.27	40°00'32.631"N	104°55'17.669"W	12.88	
7519.00	45.920	0.330	7453.26	220.58	216.99	189.09	40°00'32.931"N	104°55'17.659"W	15.27	
7564.00	51.860	358.830	7482.83	254.46	250.88	188.82	40°00'33.266"N	104°55'17.662"W	13.44	
7609.00	58.760	357.590	7508.43	291.39	287.84	187.65	40°00'33.632"N	104°55'17.677"W	15.50	
7654.00	65.870	356.220	7529.32	331.10	327.60	185.48	40°00'34.024"N	104°55'17.705"W	16.03	
7699.00	73.560	356.240	7544.91	373.12	369.69	182.71	40°00'34.440"N	104°55'17.741"W	17.09	
7744.00	80.950	357.480	7554.83	416.86	413.48	180.31	40°00'34.873"N	104°55'17.772"W	16.64	
7785.00	84.810	357.600	7559.91	457.46	454.12	178.57	40°00'35.275"N	104°55'17.794"W	9.42	
7817.00†	86.709	357.700	7562.28	489.32	486.00	177.26	40°00'35.590"N	104°55'17.811"W	5.94	7" CASING POINT
7862.00	89.380	357.840	7563.82	534.21	530.94	175.51	40°00'36.034"N	104°55'17.833"W	5.94	
7997.00	89.600	357.720	7565.02	668.98	665.83	170.28	40°00'37.367"N	104°55'17.901"W	0.19	
8087.00	90.060	359.490	7565.28	758.89	755.80	168.09	40°00'38.256"N	104°55'17.929"W	2.03	
8266.00	90.490	359.510	7564.43	937.82	934.79	166.53	40°00'40.025"N	104°55'17.949"W	0.24	
8446.00	91.140	359.190	7561.87	1117.71	1114.76	164.49	40°00'41.803"N	104°55'17.975"W	0.40	
8626.00	91.300	0.150	7558.03	1297.61	1294.72	163.45	40°00'43.582"N	104°55'17.988"W	0.54	
8715.00	89.600	359.250	7557.33	1386.58	1383.71	162.98	40°00'44.461"N	104°55'17.994"W	2.16	
8895.00	90.150	358.980	7557.73	1566.47	1563.68	160.20	40°00'46.240"N	104°55'18.030"W	0.34	
9075.00	90.310	358.210	7557.00	1746.30	1743.63	155.79	40°00'48.018"N	104°55'18.087"W	0.44	
9254.00	89.850	358.500	7556.75	1925.09	1922.55	150.65	40°00'49.786"N	104°55'18.153"W	0.30	
9344.00	89.140	359.313	7557.55	2015.02	2012.53	148.93	40°00'50.675"N	104°55'18.175"W	1.20	
9524.00	89.660	359.050	7559.43	2194.91	2192.50	146.36	40°00'52.454"N	104°55'18.208"W	0.32	
9614.00	89.380	0.610	7560.19	2284.88	2282.50	146.09	40°00'53.343"N	104°55'18.211"W	1.76	
9794.00	90.000	0.540	7561.16	2464.87	2462.48	147.90	40°00'55.122"N	104°55'18.188"W	0.35	
9973.00	90.490	0.640	7560.39	2643.86	2641.47	149.74	40°00'56.891"N	104°55'18.164"W	0.28	
10153.00	90.520	359.980	7558.81	2823.83	2821.46	150.72	40°00'58.670"N	104°55'18.152"W	0.37	
10243.00	90.610	359.740	7557.92	2913.81	2911.46	150.50	40°00'59.559"N	104°55'18.155"W	0.28	
10332.00	88.760	1.220	7558.41	3002.80	3000.45	151.24	40°01'00.438"N	104°55'18.145"W	2.66	
10512.00	88.890	0.180	7562.10	3182.75	3180.39	153.44	40°01'02.217"N	104°55'18.117"W	0.58	
10692.00	89.170	359.780	7565.15	3362.69	3360.37	153.38	40°01'03.995"N	104°55'18.118"W	0.27	
10871.00	88.850	359.540	7568.24	3541.61	3539.34	152.32	40°01'05.764"N	104°55'18.131"W	0.22	
10961.00	90.160	0.750	7569.02	3631.59	3629.33	152.55	40°01'06.653"N	104°55'18.128"W	1.98	
11141.00	90.340	1.360	7568.23	3811.58	3809.30	155.86	40°01'08.432"N	104°55'18.086"W	0.35	

REFERENCE WELLPATH IDENTIFICATION			
Operator	KERR-MCGEE OIL & GAS ONSHORE LP	Slot	SLOT#19 HOWARD 4N-29HZ (2287'FNL & 420'FWL, SEC.32)
Area	COLORADO	Well	HOWARD 4N-29HZ
Field	WELD COUNTY (KERR MCGEE)	Wellbore	HOWARD 4N-29HZ AWB
Facility	SEC.32-T1N-R67W		

WELLPATH DATA (117 stations)										
MD [ft]	Inclination [°]	Azimuth [°]	TVD [ft]	Vert Sect [ft]	North [ft]	East [ft]	Latitude	Longitude	DLS [°/100ft]	Comments
11231.00	90.400	1.360	7567.65	3901.58	3899.27	158.00	40°01'09.321"N	104°55'18.058"W	0.07	
11410.00	89.540	1.600	7567.75	4080.58	4078.21	162.62	40°01'11.089"N	104°55'17.999"W	0.50	
11590.00	90.030	359.910	7568.42	4260.56	4258.18	164.99	40°01'12.868"N	104°55'17.968"W	0.98	
11770.00	89.630	359.740	7568.96	4440.52	4438.18	164.44	40°01'14.646"N	104°55'17.975"W	0.24	
11860.00	89.450	0.020	7569.68	4530.50	4528.18	164.25	40°01'15.536"N	104°55'17.978"W	0.37	
12039.00	89.410	0.310	7571.46	4709.46	4707.17	164.77	40°01'17.305"N	104°55'17.971"W	0.16	
12219.00	90.000	0.420	7572.39	4889.44	4887.16	165.91	40°01'19.083"N	104°55'17.956"W	0.33	
12398.00	89.510	0.960	7573.15	5068.44	5066.14	168.07	40°01'20.852"N	104°55'17.929"W	0.41	
12488.00	90.090	0.050	7573.46	5158.43	5156.14	168.86	40°01'21.742"N	104°55'17.918"W	1.20	
12578.00	90.220	0.180	7573.22	5248.42	5246.14	169.04	40°01'22.631"N	104°55'17.916"W	0.20	
12758.00	90.310	359.250	7572.39	5428.36	5426.13	168.15	40°01'24.410"N	104°55'17.928"W	0.52	
12937.00	90.060	359.080	7571.81	5607.26	5605.11	165.54	40°01'26.178"N	104°55'17.961"W	0.17	
13117.00	89.660	359.080	7572.25	5787.14	5785.09	162.65	40°01'27.957"N	104°55'17.998"W	0.22	
13296.00	90.030	359.040	7572.73	5966.03	5964.06	159.71	40°01'29.726"N	104°55'18.036"W	0.21	
13476.00	89.720	359.260	7573.13	6145.93	6144.04	157.04	40°01'31.504"N	104°55'18.070"W	0.21	
13565.00	90.340	359.680	7573.08	6234.89	6233.04	156.22	40°01'32.384"N	104°55'18.081"W	0.84	
13655.00	89.940	359.380	7572.86	6324.85	6323.03	155.48	40°01'33.273"N	104°55'18.090"W	0.56	
13745.00	90.060	359.520	7572.86	6414.82	6413.03	154.62	40°01'34.162"N	104°55'18.101"W	0.20	
13925.00	89.910	359.000	7572.91	6594.72	6593.02	152.29	40°01'35.941"N	104°55'18.131"W	0.30	
14014.00	90.250	0.570	7572.78	6683.70	6682.01	151.96	40°01'36.821"N	104°55'18.136"W	1.80	
14104.00	89.600	0.010	7572.90	6773.69	6772.01	152.41	40°01'37.710"N	104°55'18.130"W	0.95	
14284.00	92.340	358.500	7569.85	6953.55	6951.95	150.08	40°01'39.488"N	104°55'18.160"W	1.74	
14374.00	90.500	359.160	7567.62	7043.44	7041.90	148.24	40°01'40.377"N	104°55'18.183"W	2.17	
14554.00	91.360	359.740	7564.70	7223.34	7221.86	146.51	40°01'42.156"N	104°55'18.206"W	0.58	
14733.00	91.850	359.820	7559.69	7402.22	7400.79	145.82	40°01'43.924"N	104°55'18.214"W	0.28	
14843.00	91.660	359.750	7556.32	7512.14	7510.74	145.41	40°01'45.010"N	104°55'18.220"W	0.18	LAST BHI MWD+IFR SURVEY
14898.00	91.660	359.750	7554.73	7567.11	7565.71	145.17	40°01'45.554"N	104°55'18.223"W	0.00	PROJECTION TO BIT

HOLE & CASING SECTIONS - Ref Wellbore: HOWARD 4N-29HZ AWB Ref Wellpath: HOWARD 4N-29HZ AWP									
String/Diameter	Start MD [ft]	End MD [ft]	Interval [ft]	Start TVD [ft]	End TVD [ft]	Start N/S [ft]	Start E/W [ft]	End N/S [ft]	End E/W [ft]
13.5in Open Hole	25.00	993.00	968.00	25.00	992.99	0.00	0.00	-3.88	-0.63
9.625in Casing Surface	25.00	993.00	968.00	25.00	992.99	0.00	0.00	-3.88	-0.63
8.75in Open Hole	993.00	7828.00	6835.00	992.99	7562.85	-3.88	-0.63	496.98	176.82
7in Casing Intermediate	25.00	7817.00	7792.00	25.00	7562.28	0.00	0.00	486.00	177.26
6.125in Open Hole	7828.00	14898.00	7070.00	7562.85	7554.73	496.98	176.82	7565.71	145.17

REFERENCE WELLPATH IDENTIFICATION			
Operator	KERR-MCGEE OIL & GAS ONSHORE LP	Slot	SLOT#19 HOWARD 4N-29HZ (2287'FNL & 420'FWL, SEC.32)
Area	COLORADO	Well	HOWARD 4N-29HZ
Field	WELD COUNTY (KERR MCGEE)	Wellbore	HOWARD 4N-29HZ AWB
Facility	SEC.32-T1N-R67W		

WELLPATH COMPOSITION - Ref Wellbore: HOWARD 4N-29HZ AWB Ref Wellpath: HOWARD 4N-29HZ AWP				
Start MD [ft]	End MD [ft]	Positional Uncertainty Model	Log Name/Comment	Wellbore
25.00	894.00	Generic gyro - continuous (Standard)	MS GYRO SURVEYS <125-894>	HOWARD 4N-29HZ AWB
894.00	7785.00	NaviTrak (MAGCORR,IFR)	BHI NAVITRAK MWD+IFR 8 3/4" <1092-7785>	HOWARD 4N-29HZ AWB
7785.00	14843.00	NaviTrak (MAGCORR,IFR)	BHI NAVITRAK MWD+IFR 6 1/8" <7862-14843>	HOWARD 4N-29HZ AWB
14843.00	14898.00	Blind Drilling (std)	Projection to bit	HOWARD 4N-29HZ AWB

REFERENCE WELLPATH IDENTIFICATION			
Operator	KERR-MCGEE OIL & GAS ONSHORE LP	Slot	SLOT#19 HOWARD 4N-29HZ (2287'FNL & 420'FWL, SEC.32)
Area	COLORADO	Well	HOWARD 4N-29HZ
Field	WELD COUNTY (KERR MCGEE)	Wellbore	HOWARD 4N-29HZ AWB
Facility	SEC.32-T1N-R67W		

WELLPATH COMMENTS				
MD [ft]	Inclination [°]	Azimuth [°]	TVD [ft]	Comment
25.00	0.000	164.770	25.00	TIE ON
125.00	0.160	164.770	125.00	BEGIN GYRO SURVEYS
894.00	0.400	180.840	893.99	TIE ONTO GYRO SURVEYS
1092.00	0.410	289.870	1091.99	BEGIN BHI MWD+IFR SURVEYS
7817.00	86.709	357.700	7562.28	7" CASING POINT
14843.00	91.660	359.750	7556.32	LAST BHI MWD+IFR SURVEY
14898.00	91.660	359.750	7554.73	PROJECTION TO BIT