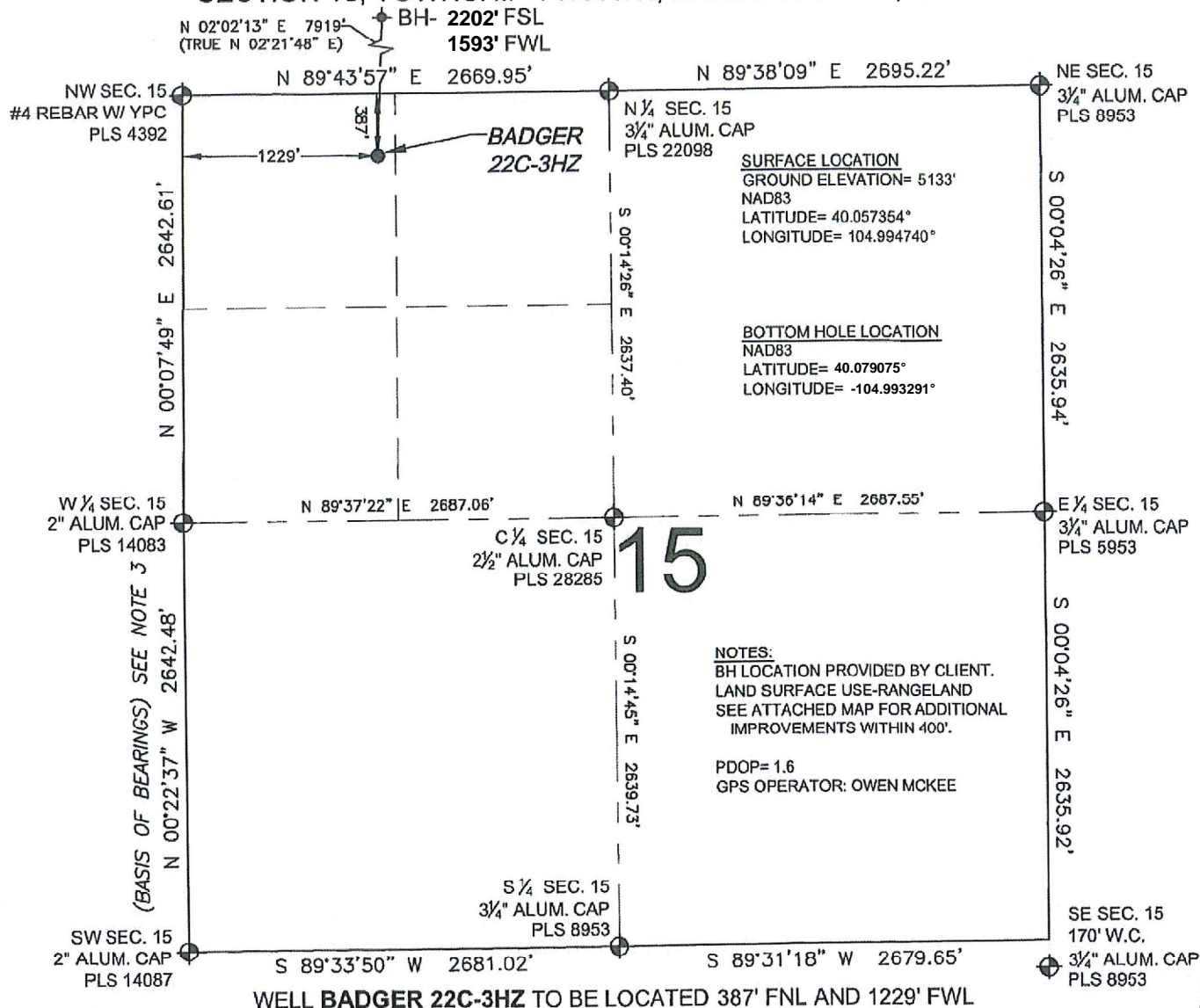


# WELL LOCATION CERTIFICATE: BADGER 22C-3HZ

SECTION 15, TOWNSHIP 1 NORTH, RANGE 68 WEST, 6TH P.M.



## LEGEND

- = EXISTING MONUMENT   
 = BOTTOM HOLE   
 BH = BOTTOM HOLE  
 = PROPOSED WELL   
 = EXISTING WELL

## NOTES:

- THIS FIELD SURVEY CONFORMS TO THE MINIMUM STANDARDS SET BY THE C.O.G.C.C., RULE NO. 215
- HORIZONTAL POSITIONS AND ORTHOMETRIC ELEVATIONS SHOWN AT THE WELL HEAD, ARE BASED ON GPS-RTK POSITIONS DERIVED FROM MINIMUM 2-HOUR STATIC OBSERVATIONS CORRECTED BY THE NATIONAL GEODETIC SURVEY ONLINE POSITIONING USER SERVICE, O.P.U.S. DATUM: HORIZONTAL = NAD83/2007, VERTICAL = NAVD88
- THE BASIS OF BEARINGS ARE STATE PLANE COORDINATE SYSTEM GRID BEARINGS SHOWN HEREON BETWEEN THE DESCRIBED MONUMENTS SHOWN HEREON.
- GRID DISTANCES ARE SHOWN, AS MEASURED IN THE FIELD, WITH TIES TO WELLS MEASURED PERPENDICULAR TO SECTION LINES.

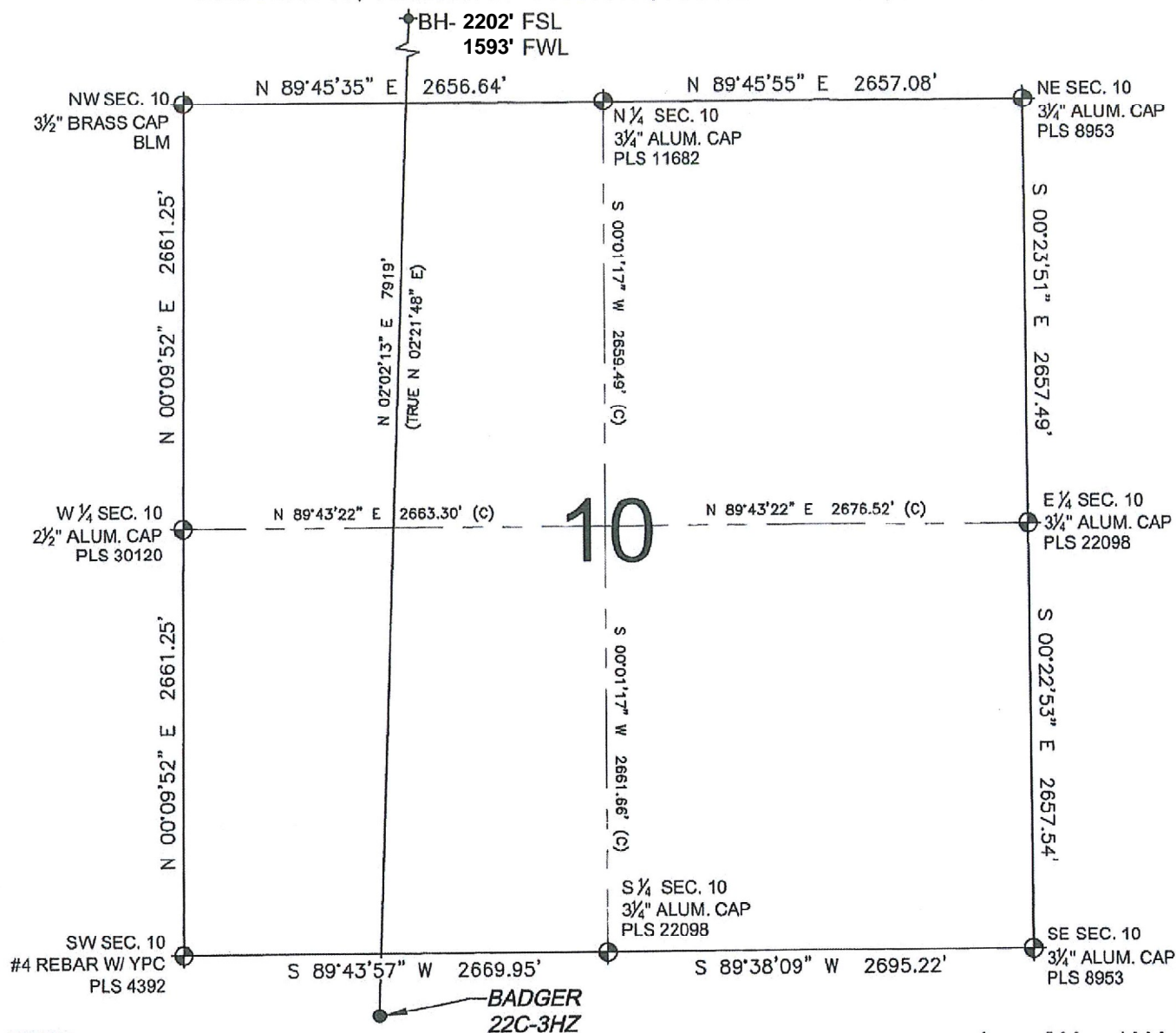
SHEET 1 OF 3

PREPARED BY:	FIELD DATE:	SURFACE LOCATION:
PFS Petroleum Field Services, LLC 1801 W. 13th Ave. Denver, CO 80204	04-20-12	NW 1/4 NW 1/4, SEC. 15, T1N, R68W, 6TH P.M.
DRAWING DATE:	BY:	CHECKED:
04-30-12	SMF	KAG
		WELD COUNTY, COLORADO

NOTICE: ACCORDING TO COLORADO LAW YOU MUST COMMENCE ANY LEGAL ACTION BASED UPON ANY DEFECT IN THIS SURVEY WITHIN THREE YEARS AFTER YOU FIRST DISCOVER SUCH DEFECT. IN NO EVENT MAY ANY ACTION BASED UPON ANY DEFECT IN THIS SURVEY BE COMMENCED MORE THAN TEN YEARS FROM THIS SAID DATE OF THIS CERTIFICATION SHOWN HEREON.

# WELL LOCATION CERTIFICATE: BADGER 22C-3HZ

SECTION 15, TOWNSHIP 1 NORTH, RANGE 68 WEST, 6TH P.M.



## LEGEND

- = EXISTING MONUMENT
- ◆ = PROPOSED WELL
- ◆ = BOTTOM HOLE
- ◆ = EXISTING WELL
- BH = BOTTOM HOLE

## NOTES:

- THIS FIELD SURVEY CONFORMS TO THE MINIMUM STANDARDS SET BY THE C.O.G.C.C., RULE NO. 215
- HORIZONTAL POSITIONS AND ORTHOMETRIC ELEVATIONS SHOWN AT THE WELL HEAD, ARE BASED ON GPS-RTK POSITIONS DERIVED FROM MINIMUM 2-HOUR STATIC OBSERVATIONS CORRECTED BY THE NATIONAL GEODETIC SURVEY ONLINE POSITIONING USER SERVICE, O.P.U.S. DATUM: HORIZONTAL = NAD83/2007, VERTICAL = NAVD88
- THE BASIS OF BEARINGS ARE STATE PLANE COORDINATE SYSTEM GRID BEARINGS SHOWN HEREON BETWEEN THE DESCRIBED MONUMENTS SHOWN HEREON.
- GRID DISTANCES ARE SHOWN, AS MEASURED IN THE FIELD, WITH TIES TO WELLS MEASURED PERPENDICULAR TO SECTION LINES.

SHEET 2 OF 3

PREPARED BY:



FIELD DATE:

04-20-12

DRAWING DATE:

04-30-12

BY:

SMF

CHECKED:

KAG

SURFACE LOCATION:

NW 1/4 NW 1/4,

SEC.15, T1N, R68W, 6TH P.M.

WELD COUNTY, COLORADO

NOTICE: ACCORDING TO COLORADO LAW YOU MUST COMMENCE ANY LEGAL ACTION BASED UPON ANY DEFECT IN THIS SURVEY WITHIN THREE YEARS AFTER YOU FIRST DISCOVER SUCH DEFECT. IN NO EVENT MAY ANY ACTION BASED UPON ANY DEFECT IN THIS SURVEY BE COMMENCED MORE THAN TEN YEARS FROM THIS SAID DATE OF THIS CERTIFICATION SHOWN HEREON.



SECTION 15, TOWNSHIP 1 NORTH, RANGE 68 WEST, 6TH P.M.

