

KERR-MCGEE OIL & GAS ONSHORE LP

Location: COLORADO Slot: SLOT#19 DOCHEFF 33N-13HZ (2127'FSL & 1629'FWL, SEC.14)
 Field: WELD COUNTY (KERR MCGEE) Well: DOCHEFF 33N-13HZ
 Facility: SEC.14-T3N-R68W Wellbore: DOCHEFF 33N-13HZ PWB

Plot reference wellpath is DOCHEFF 33N-13HZ (PERMIT REV-1) PWP

True vertical depths are referenced to PERMIT (17KB) (RKB)	Grid System: NAD83 / Lambert Colorado SP, Northern Zone (501), US feet
Measured depths are referenced to PERMIT (17KB) (RKB)	North Reference: True north
PERMIT (17KB) (RKB) to Mean Sea Level: 4951 feet	Scale: True distance
Mean Sea Level to Mud line (At Slot: SLOT#19 DOCHEFF 33N-13HZ (2127'FSL & 1629'FWL, SEC.14)): 0 feet	Depths are in feet
Coordinates are in feet referenced to Slot	Created by: robiale01 on 9/10/2014

Location Information

Facility Name		Grid East (US ft)	Grid North (US ft)	Latitude	Longitude
SEC.14-T3N-R68W		3146766.378	1323729.589	40°13'15.029"N	104°58'27.900"W
Slot	Local N (ft)	Local E (ft)	Grid East (US ft)	Latitude	Longitude
SLOT#19 DOCHEFF 33N-13HZ (2127'FSL & 1629'FWL, SEC.14)	1431.91	166.07	3146923.952	40°13'29.179"N	104°58'25.759"W
PERMIT (17KB) (RKB) to Mud line (At Slot: SLOT#19 DOCHEFF 33N-13HZ (2127'FSL & 1629'FWL, SEC.14))	4951ft				
Mean Sea Level to Mud line (At Slot: SLOT#19 DOCHEFF 33N-13HZ (2127'FSL & 1629'FWL, SEC.14))	0ft				
PERMIT (17KB) (RKB) to Mean Sea Level	4951ft				

Survey Program

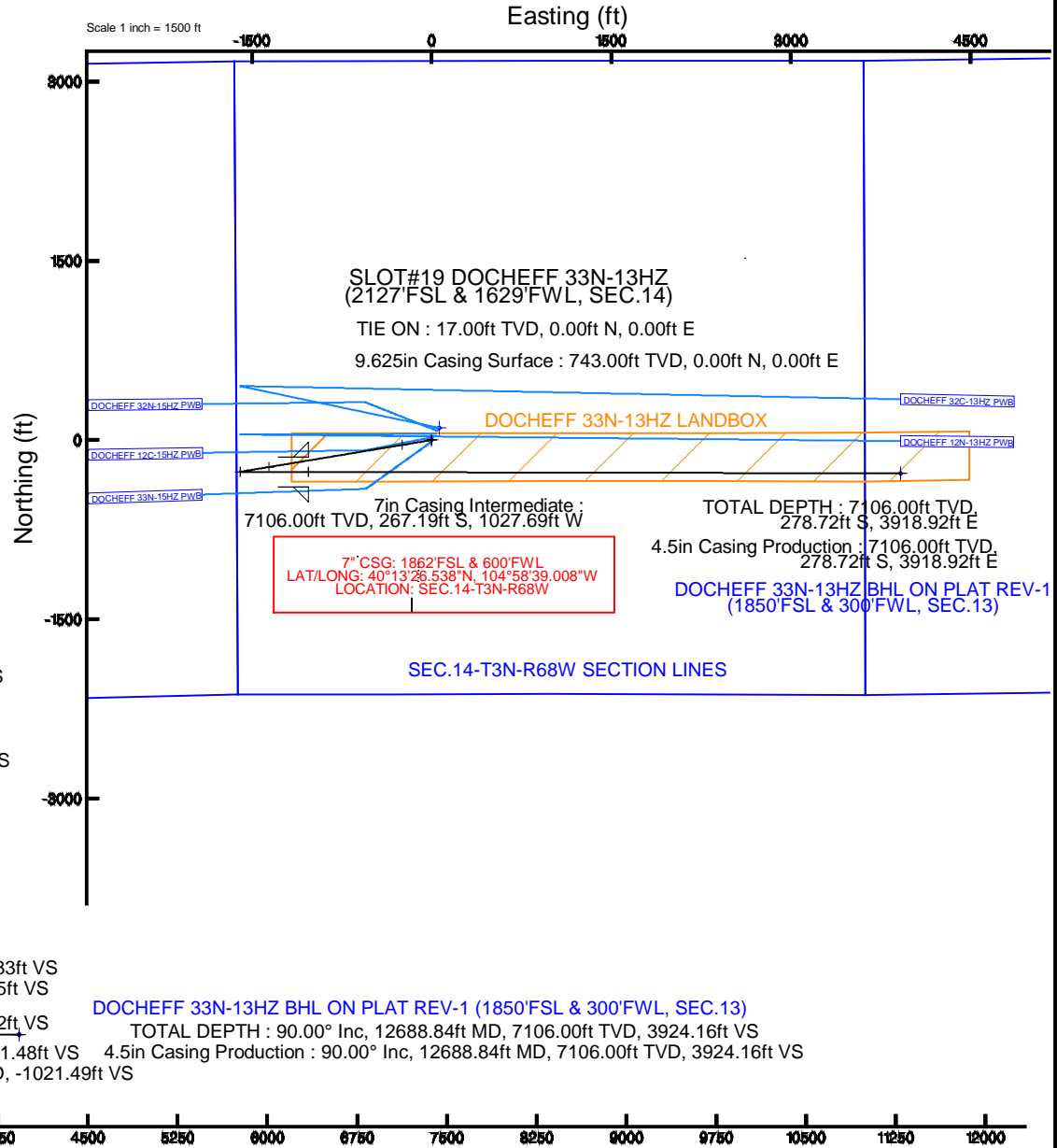
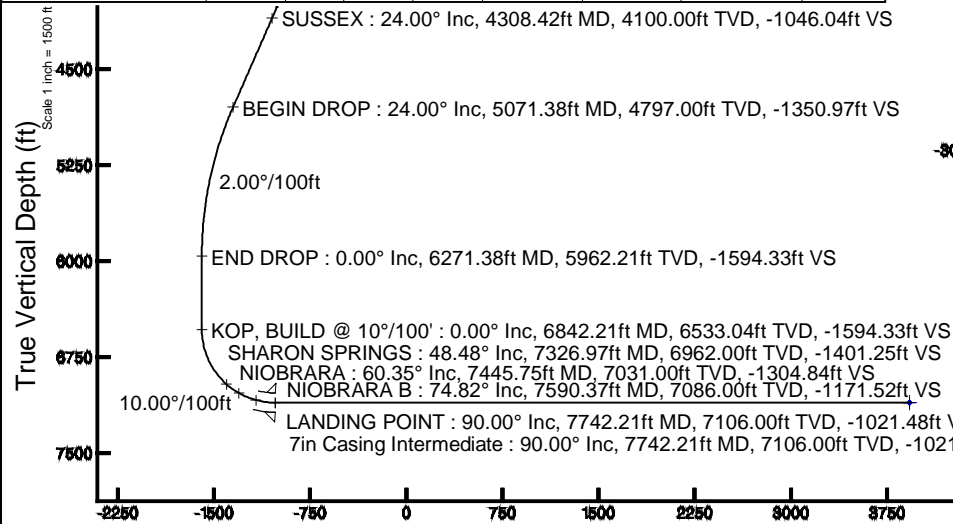
Start MD (ft)	End MD (ft)	Tool	Model	Log Name/Comment	Wellbore
17.00	12688.84	NaviTrak	NaviTrak	(IFR)	DOCHEFF 33N-13HZ PWB

Targets

Name	MD (ft)	TVD (ft)	Local N (ft)	Local E (ft)	Grid East (US ft)	Grid North (US ft)	Latitude	Longitude
SEC.13-T3N-R68W SECTION LINES		0.00	2335.46	8336.24	3155245.81	1327547.17	40°13'52.244"N	104°56'38.278"W
SEC.14-T3N-R68W SECTION LINES		0.00	2335.46	8336.24	3155245.81	1327547.17	40°13'52.244"N	104°56'38.278"W
SEC.15-T3N-R68W SECTION LINES		0.00	101.30	64.46	3146967.81	1325264.06	40°13'30.180"N	104°58'24.928"W
DOCHEFF 33N-13HZ BHL ON PLAT REV-1 (1850'FSL & 300'FWL, SEC.13)	12688.84	7106.00	-278.72	3918.92	3150844.28	1324906.94	40°13'26.422"N	104°57'35.237"W
DOCHEFF 33N-13HZ BHL REV-2 (1740'FSL & 300'FWL, SEC.13)		7106.00	-388.68	3918.91	3150844.92	1324796.99	40°13'25.335"N	104°57'35.237"W
DOCHEFF 33N-13HZ LANDBOX		7106.00	0.00	0.00	3146923.95	1325162.39	40°13'29.179"N	104°58'25.759"W

Well Profile Data

Design Comment	MD (ft)	Inc (°)	Az (°)	TVD (ft)	Local N (ft)	Local E (ft)	DLS (°/100ft)	VS (ft)
TIE ON	17.00	0.000	260.570	17.00	0.00	0.00	0.00	0.00
BEGIN NUDGE	1100.00	0.000	260.570	1100.00	0.00	0.00	0.00	0.00
END NUDGE	2300.00	24.000	260.570	2265.21	-40.58	-244.33	2.00	-243.36
BEGIN DROP	5071.38	24.000	260.570	4797.00	-225.27	-1356.32	0.00	-1350.97
END DROP	6271.38	0.000	90.134	5962.21	-265.85	-1600.64	2.00	-1594.33
KOP, BUILD @ 10°/100'	6842.21	0.000	90.134	6533.04	-265.85	-1600.64	0.00	-1594.33
LANDING POINT	7742.21	90.000	90.134	7106.00	-267.19	-1027.69	10.00	-1021.48
TOTAL DEPTH	12688.84	90.000	90.133	7106.00	-278.72	3918.92	0.00	3924.16



Vertical Section (ft)
 Azimuth 91.28° with reference 0.00 N, 0.00 E

Scale 1 inch = 1500 ft



Planned Wellpath Report

DOCHEFF 33N-13HZ (PERMIT REV-1) PWP

Page 1 of 7



REFERENCE WELLPATH IDENTIFICATION			
Operator	KERR-MCGEE OIL & GAS ONSHORE LP	Slot	SLOT#19 DOCHEFF 33N-13HZ (2127'FSL & 1629'FWL, SEC.14)
Area	COLORADO	Well	DOCHEFF 33N-13HZ
Field	WELD COUNTY (KERR MCGEE)	Wellbore	DOCHEFF 33N-13HZ PWB
Facility	SEC.14-T3N-R68W		

REPORT SETUP INFORMATION			
Projection System	NAD83 / Lambert Colorado SP, Northern Zone (501), US feet	Software System	WellArchitect® 4.0.0
North Reference	True	User	Robiale01
Scale	0.999957	Report Generated	9/10/2014 at 3:16:39 PM
Convergence at slot	n/a	Database/Source file	WellArchitectDB/DOCHEFF_33N-13HZ_PWB.xml

WELLPATH LOCATION						
	Local coordinates		Grid coordinates		Geographic coordinates	
	North[ft]	East[ft]	Easting[US ft]	Northing[US ft]	Latitude	Longitude
Slot Location	1431.91	166.07	3146923.95	1325162.39	40°13'29.179"N	104°58'25.759"W
Facility Reference Pt			3146766.38	1323729.59	40°13'15.029"N	104°58'27.900"W
Field Reference Pt			3197771.84	1268891.29	40°04'09.600"N	104°47'36.000"W

WELLPATH DATUM			
Calculation method	Minimum curvature	PERMIT (17'KB) (RKB) to Facility Vertical Datum	4951.00ft
Horizontal Reference Pt	Slot	PERMIT (17'KB) (RKB) to Mean Sea Level	4951.00ft
Vertical Reference Pt	PERMIT (17'KB) (RKB)	PERMIT (17'KB) (RKB) to Mud Line at Slot (SLOT#19 DOCHEFF 33N-13HZ (2127'FSL & 1629'FWL, SEC.14))	4951.00ft
MD Reference Pt	PERMIT (17'KB) (RKB)	Section Origin	N 0.00, E 0.00 ft
Field Vertical Reference	Mean Sea Level	Section Azimuth	91.28°



Planned Wellpath Report

DOCHEFF 33N-13HZ (PERMIT REV-1) PWP



REFERENCE WELLPATH IDENTIFICATION			
Operator	KERR-MCGEE OIL & GAS ONSHORE LP	Slot	SLOT#19 DOCHEFF 33N-13HZ (2127'FSL & 1629'FWL, SEC.14)
Area	COLORADO	Well	DOCHEFF 33N-13HZ
Field	WELD COUNTY (KERR MCGEE)	Wellbore	DOCHEFF 33N-13HZ PWB
Facility	SEC.14-T3N-R68W		

WELLPATH DATA (142 stations) † = interpolated/extrapolated station

MD [ft]	Inclination [°]	Azimuth [°]	TVD [ft]	Vert Sect [ft]	North [ft]	East [ft]	Latitude	Longitude	DLS [°/100ft]	Comments
0.00†	0.000	260.570	0.00	0.00	0.00	0.00	40°13'29.179"N	104°58'25.759"W	0.00	
17.00	0.000	260.570	17.00	0.00	0.00	0.00	40°13'29.179"N	104°58'25.759"W	0.00	TIE ON
117.00†	0.000	260.570	117.00	0.00	0.00	0.00	40°13'29.179"N	104°58'25.759"W	0.00	
217.00†	0.000	260.570	217.00	0.00	0.00	0.00	40°13'29.179"N	104°58'25.759"W	0.00	
317.00†	0.000	260.570	317.00	0.00	0.00	0.00	40°13'29.179"N	104°58'25.759"W	0.00	
417.00†	0.000	260.570	417.00	0.00	0.00	0.00	40°13'29.179"N	104°58'25.759"W	0.00	
517.00†	0.000	260.570	517.00	0.00	0.00	0.00	40°13'29.179"N	104°58'25.759"W	0.00	
551.00†	0.000	260.570	551.00	0.00	0.00	0.00	40°13'29.179"N	104°58'25.759"W	0.00	BASE FOX HILLS
617.00†	0.000	260.570	617.00	0.00	0.00	0.00	40°13'29.179"N	104°58'25.759"W	0.00	
717.00†	0.000	260.570	717.00	0.00	0.00	0.00	40°13'29.179"N	104°58'25.759"W	0.00	
743.00†	0.000	260.570	743.00	0.00	0.00	0.00	40°13'29.179"N	104°58'25.759"W	0.00	SURFACE CSG SETTING DEPTH
817.00†	0.000	260.570	817.00	0.00	0.00	0.00	40°13'29.179"N	104°58'25.759"W	0.00	
917.00†	0.000	260.570	917.00	0.00	0.00	0.00	40°13'29.179"N	104°58'25.759"W	0.00	
1017.00†	0.000	260.570	1017.00	0.00	0.00	0.00	40°13'29.179"N	104°58'25.759"W	0.00	
1100.00	0.000	260.570	1100.00	0.00	0.00	0.00	40°13'29.179"N	104°58'25.759"W	0.00	BEGIN NUDGE
1117.00†	0.340	260.570	1117.00	-0.05	-0.01	-0.05	40°13'29.179"N	104°58'25.760"W	2.00	
1217.00†	2.340	260.570	1216.97	-2.35	-0.39	-2.36	40°13'29.175"N	104°58'25.789"W	2.00	
1317.00†	4.340	260.570	1316.79	-8.07	-1.35	-8.10	40°13'29.166"N	104°58'25.863"W	2.00	
1417.00†	6.340	260.570	1416.35	-17.22	-2.87	-17.28	40°13'29.151"N	104°58'25.982"W	2.00	
1517.00†	8.340	260.570	1515.53	-29.77	-4.96	-29.89	40°13'29.130"N	104°58'26.144"W	2.00	
1617.00†	10.340	260.570	1614.20	-45.71	-7.62	-45.90	40°13'29.104"N	104°58'26.351"W	2.00	
1717.00†	12.340	260.570	1712.24	-65.03	-10.84	-65.29	40°13'29.072"N	104°58'26.601"W	2.00	
1817.00†	14.340	260.570	1809.54	-87.70	-14.62	-88.05	40°13'29.034"N	104°58'26.894"W	2.00	
1917.00†	16.340	260.570	1905.97	-113.70	-18.96	-114.15	40°13'28.992"N	104°58'27.231"W	2.00	
2017.00†	18.340	260.570	2001.42	-142.98	-23.84	-143.55	40°13'28.943"N	104°58'27.610"W	2.00	
2117.00†	20.340	260.570	2095.77	-175.52	-29.27	-176.22	40°13'28.890"N	104°58'28.031"W	2.00	
2217.00†	22.340	260.570	2188.91	-211.28	-35.23	-212.11	40°13'28.831"N	104°58'28.494"W	2.00	
2300.00	24.000	260.570	2265.21	-243.36	-40.58	-244.33	40°13'28.778"N	104°58'28.909"W	2.00	END NUDGE
2317.00†	24.000	260.570	2280.74	-250.16	-41.71	-251.15	40°13'28.767"N	104°58'28.997"W	0.00	
2417.00†	24.000	260.570	2372.10	-290.12	-48.38	-291.27	40°13'28.701"N	104°58'29.514"W	0.00	
2517.00†	24.000	260.570	2463.45	-330.09	-55.04	-331.40	40°13'28.635"N	104°58'30.031"W	0.00	
2617.00†	24.000	260.570	2554.81	-370.05	-61.70	-371.52	40°13'28.569"N	104°58'30.549"W	0.00	
2717.00†	24.000	260.570	2646.16	-410.02	-68.37	-411.64	40°13'28.503"N	104°58'31.066"W	0.00	
2817.00†	24.000	260.570	2737.52	-449.99	-75.03	-451.77	40°13'28.437"N	104°58'31.583"W	0.00	
2917.00†	24.000	260.570	2828.87	-489.95	-81.70	-491.89	40°13'28.372"N	104°58'32.100"W	0.00	
3017.00†	24.000	260.570	2920.23	-529.92	-88.36	-532.02	40°13'28.306"N	104°58'32.618"W	0.00	
3117.00†	24.000	260.570	3011.58	-569.88	-95.03	-572.14	40°13'28.240"N	104°58'33.135"W	0.00	
3217.00†	24.000	260.570	3102.94	-609.85	-101.69	-612.26	40°13'28.174"N	104°58'33.652"W	0.00	
3317.00†	24.000	260.570	3194.29	-649.81	-108.35	-652.39	40°13'28.108"N	104°58'34.170"W	0.00	
3417.00†	24.000	260.570	3285.64	-689.78	-115.02	-692.51	40°13'28.042"N	104°58'34.687"W	0.00	
3517.00†	24.000	260.570	3377.00	-729.75	-121.68	-732.64	40°13'27.976"N	104°58'35.204"W	0.00	
3617.00†	24.000	260.570	3468.35	-769.71	-128.35	-772.76	40°13'27.911"N	104°58'35.721"W	0.00	
3717.00†	24.000	260.570	3559.71	-809.68	-135.01	-812.88	40°13'27.845"N	104°58'36.239"W	0.00	
3801.61†	24.000	260.570	3637.00	-843.49	-140.65	-846.83	40°13'27.789"N	104°58'36.676"W	0.00	PARKMAN
3817.00†	24.000	260.570	3651.06	-849.64	-141.67	-853.01	40°13'27.779"N	104°58'36.756"W	0.00	

REFERENCE WELLPATH IDENTIFICATION			
Operator	KERR-MCGEE OIL & GAS ONSHORE LP	Slot	SLOT#19 DOCHEFF 33N-13HZ (2127'FSL & 1629'FWL, SEC.14)
Area	COLORADO	Well	DOCHEFF 33N-13HZ
Field	WELD COUNTY (KERR MCGEE)	Wellbore	DOCHEFF 33N-13HZ PWB
Facility	SEC.14-T3N-R68W		

WELLPATH DATA (142 stations) † = interpolated/extrapolated station

MD [ft]	Inclination [°]	Azimuth [°]	TVD [ft]	Vert Sect [ft]	North [ft]	East [ft]	Latitude	Longitude	DLS [°/100ft]	Comments
3917.00†	24.000	260.570	3742.42	-889.61	-148.34	-893.13	40°13'27.713"N	104°58'37.273"W	0.00	
4017.00†	24.000	260.570	3833.77	-929.57	-155.00	-933.26	40°13'27.647"N	104°58'37.790"W	0.00	
4117.00†	24.000	260.570	3925.13	-969.54	-161.67	-973.38	40°13'27.581"N	104°58'38.308"W	0.00	
4217.00†	24.000	260.570	4016.48	-1009.50	-168.33	-1013.50	40°13'27.515"N	104°58'38.825"W	0.00	
4308.42†	24.000	260.570	4100.00	-1046.04	-174.42	-1050.19	40°13'27.455"N	104°58'39.298"W	0.00	SUSSEX
4317.00†	24.000	260.570	4107.84	-1049.47	-174.99	-1053.63	40°13'27.449"N	104°58'39.342"W	0.00	
4417.00†	24.000	260.570	4199.19	-1089.44	-181.66	-1093.75	40°13'27.384"N	104°58'39.860"W	0.00	
4517.00†	24.000	260.570	4290.54	-1129.40	-188.32	-1133.88	40°13'27.318"N	104°58'40.377"W	0.00	
4617.00†	24.000	260.570	4381.90	-1169.37	-194.99	-1174.00	40°13'27.252"N	104°58'40.894"W	0.00	
4717.00†	24.000	260.570	4473.25	-1209.33	-201.65	-1214.12	40°13'27.186"N	104°58'41.411"W	0.00	
4817.00†	24.000	260.570	4564.61	-1249.30	-208.31	-1254.25	40°13'27.120"N	104°58'41.929"W	0.00	
4917.00†	24.000	260.570	4655.96	-1289.26	-214.98	-1294.37	40°13'27.054"N	104°58'42.446"W	0.00	
5017.00†	24.000	260.570	4747.32	-1329.23	-221.64	-1334.50	40°13'26.988"N	104°58'42.963"W	0.00	
5071.38	24.000	260.570	4797.00	-1350.97	-225.27	-1356.32	40°13'26.953"N	104°58'43.244"W	0.00	BEGIN DROP
5117.00†	23.088	260.570	4838.82	-1368.87	-228.25	-1374.29	40°13'26.923"N	104°58'43.476"W	2.00	
5217.00†	21.088	260.570	4931.47	-1405.82	-234.41	-1411.39	40°13'26.862"N	104°58'43.954"W	2.00	
5317.00†	19.088	260.570	5025.39	-1439.56	-240.04	-1445.27	40°13'26.807"N	104°58'44.391"W	2.00	
5417.00†	17.088	260.570	5120.44	-1470.07	-245.13	-1475.89	40°13'26.756"N	104°58'44.786"W	2.00	
5517.00†	15.088	260.570	5216.52	-1497.29	-249.67	-1503.23	40°13'26.711"N	104°58'45.138"W	2.00	
5617.00†	13.088	260.570	5313.51	-1521.21	-253.65	-1527.24	40°13'26.672"N	104°58'45.448"W	2.00	
5717.00†	11.088	260.570	5411.28	-1541.78	-257.08	-1547.89	40°13'26.638"N	104°58'45.714"W	2.00	
5817.00†	9.088	260.570	5509.73	-1558.99	-259.95	-1565.17	40°13'26.610"N	104°58'45.937"W	2.00	
5917.00†	7.088	260.570	5608.73	-1572.82	-262.26	-1579.05	40°13'26.587"N	104°58'46.116"W	2.00	
6017.00†	5.088	260.570	5708.16	-1583.24	-264.00	-1589.51	40°13'26.570"N	104°58'46.251"W	2.00	
6117.00†	3.088	260.570	5807.91	-1590.24	-265.16	-1596.54	40°13'26.558"N	104°58'46.341"W	2.00	
6217.00†	1.088	260.570	5907.83	-1593.82	-265.76	-1600.14	40°13'26.552"N	104°58'46.388"W	2.00	
6271.38	0.000	90.134	5962.21	-1594.33	-265.85	-1600.64	40°13'26.551"N	104°58'46.394"W	2.00	END DROP
6317.00†	0.000	90.134	6007.83	-1594.33	-265.85	-1600.64	40°13'26.551"N	104°58'46.394"W	0.00	
6417.00†	0.000	90.134	6107.83	-1594.33	-265.85	-1600.64	40°13'26.551"N	104°58'46.394"W	0.00	
6517.00†	0.000	90.134	6207.83	-1594.33	-265.85	-1600.64	40°13'26.551"N	104°58'46.394"W	0.00	
6617.00†	0.000	90.134	6307.83	-1594.33	-265.85	-1600.64	40°13'26.551"N	104°58'46.394"W	0.00	
6717.00†	0.000	90.134	6407.83	-1594.33	-265.85	-1600.64	40°13'26.551"N	104°58'46.394"W	0.00	
6817.00†	0.000	90.134	6507.83	-1594.33	-265.85	-1600.64	40°13'26.551"N	104°58'46.394"W	0.00	
6842.21	0.000	90.134	6533.04	-1594.33	-265.85	-1600.64	40°13'26.551"N	104°58'46.394"W	0.00	KOP, BUILD @ 10°/100'
6917.00†	7.479	90.134	6607.62	-1589.46	-265.86	-1595.77	40°13'26.551"N	104°58'46.331"W	10.00	
7017.00†	17.479	90.134	6705.13	-1567.88	-265.91	-1574.19	40°13'26.551"N	104°58'46.053"W	10.00	
7117.00†	27.479	90.134	6797.42	-1529.70	-266.00	-1536.01	40°13'26.550"N	104°58'45.561"W	10.00	
7217.00†	37.479	90.134	6881.67	-1476.08	-266.12	-1482.38	40°13'26.549"N	104°58'44.870"W	10.00	
7317.00†	47.479	90.134	6955.33	-1408.65	-266.28	-1414.93	40°13'26.547"N	104°58'44.000"W	10.00	
7326.97†	48.475	90.134	6962.00	-1401.25	-266.30	-1407.53	40°13'26.547"N	104°58'43.905"W	10.00	SHARON SPRINGS
7417.00†	57.479	90.134	7016.16	-1329.45	-266.47	-1335.72	40°13'26.545"N	104°58'42.979"W	10.00	
7445.75†	60.354	90.134	7031.00	-1304.84	-266.52	-1311.10	40°13'26.545"N	104°58'42.661"W	10.00	NIOBRARA
7517.00†	67.479	90.134	7062.31	-1240.90	-266.67	-1247.15	40°13'26.543"N	104°58'41.837"W	10.00	
7590.37†	74.816	90.134	7086.00	-1171.52	-266.84	-1177.76	40°13'26.542"N	104°58'40.943"W	10.00	NIOBRARA B
7617.00†	77.479	90.134	7092.37	-1145.68	-266.90	-1151.91	40°13'26.541"N	104°58'40.609"W	10.00	

REFERENCE WELLPATH IDENTIFICATION			
Operator	KERR-MCGEE OIL & GAS ONSHORE LP	Slot	SLOT#19 DOCHEFF 33N-13HZ (2127'FSL & 1629'FWL, SEC.14)
Area	COLORADO	Well	DOCHEFF 33N-13HZ
Field	WELD COUNTY (KERR MCGEE)	Wellbore	DOCHEFF 33N-13HZ PWB
Facility	SEC.14-T3N-R68W		

WELLPATH DATA (142 stations) † = interpolated/extrapolated station

MD [ft]	Inclination [°]	Azimuth [°]	TVD [ft]	Vert Sect [ft]	North [ft]	East [ft]	Latitude	Longitude	DLS [°/100ft]	Comments
7717.00†	87.479	90.134	7105.45	-1046.68	-267.13	-1052.89	40°13'26.539"N	104°58'39.333"W	10.00	
7742.21	90.000	90.134	7106.00	-1021.48	-267.19	-1027.69	40°13'26.538"N	104°58'39.008"W	10.00	LANDING POINT
7817.00†	90.000	90.134	7106.00	-946.71	-267.36	-952.90	40°13'26.537"N	104°58'38.044"W	0.00	
7917.00†	90.000	90.134	7106.00	-846.73	-267.59	-852.90	40°13'26.534"N	104°58'36.755"W	0.00	
8017.00†	90.000	90.134	7106.00	-746.75	-267.83	-752.90	40°13'26.532"N	104°58'35.465"W	0.00	
8117.00†	90.000	90.134	7106.00	-646.77	-268.06	-652.90	40°13'26.530"N	104°58'34.176"W	0.00	
8217.00†	90.000	90.134	7106.00	-546.79	-268.30	-552.90	40°13'26.528"N	104°58'32.887"W	0.00	
8317.00†	90.000	90.134	7106.00	-446.81	-268.53	-452.90	40°13'26.525"N	104°58'31.598"W	0.00	
8417.00†	90.000	90.134	7106.00	-346.83	-268.76	-352.90	40°13'26.523"N	104°58'30.309"W	0.00	
8517.00†	90.000	90.134	7106.00	-246.85	-269.00	-252.90	40°13'26.521"N	104°58'29.019"W	0.00	
8617.00†	90.000	90.134	7106.00	-146.87	-269.23	-152.91	40°13'26.518"N	104°58'27.730"W	0.00	
8717.00†	90.000	90.134	7106.00	-46.89	-269.46	-52.91	40°13'26.516"N	104°58'26.441"W	0.00	
8817.00†	90.000	90.134	7106.00	53.09	-269.70	47.09	40°13'26.514"N	104°58'25.152"W	0.00	
8917.00†	90.000	90.134	7106.00	153.07	-269.93	147.09	40°13'26.512"N	104°58'23.863"W	0.00	
9017.00†	90.000	90.134	7106.00	253.05	-270.17	247.09	40°13'26.509"N	104°58'22.574"W	0.00	
9117.00†	90.000	90.134	7106.00	353.03	-270.40	347.09	40°13'26.507"N	104°58'21.284"W	0.00	
9217.00†	90.000	90.134	7106.00	453.01	-270.63	447.09	40°13'26.505"N	104°58'19.995"W	0.00	
9317.00†	90.000	90.134	7106.00	552.99	-270.87	547.09	40°13'26.502"N	104°58'18.706"W	0.00	
9417.00†	90.000	90.134	7106.00	652.97	-271.10	647.09	40°13'26.500"N	104°58'17.417"W	0.00	
9517.00†	90.000	90.134	7106.00	752.95	-271.33	747.09	40°13'26.498"N	104°58'16.128"W	0.00	
9617.00†	90.000	90.134	7106.00	852.93	-271.57	847.09	40°13'26.495"N	104°58'14.838"W	0.00	
9717.00†	90.000	90.134	7106.00	952.91	-271.80	947.09	40°13'26.493"N	104°58'13.549"W	0.00	
9817.00†	90.000	90.134	7106.00	1052.89	-272.03	1047.09	40°13'26.491"N	104°58'12.260"W	0.00	
9917.00†	90.000	90.134	7106.00	1152.87	-272.27	1147.09	40°13'26.488"N	104°58'10.971"W	0.00	
10017.00†	90.000	90.134	7106.00	1252.85	-272.50	1247.09	40°13'26.486"N	104°58'09.682"W	0.00	
10117.00†	90.000	90.134	7106.00	1352.83	-272.73	1347.09	40°13'26.484"N	104°58'08.392"W	0.00	
10217.00†	90.000	90.134	7106.00	1452.81	-272.97	1447.09	40°13'26.481"N	104°58'07.103"W	0.00	
10317.00†	90.000	90.134	7106.00	1552.79	-273.20	1547.09	40°13'26.479"N	104°58'05.814"W	0.00	
10417.00†	90.000	90.134	7106.00	1652.77	-273.43	1647.09	40°13'26.476"N	104°58'04.525"W	0.00	
10517.00†	90.000	90.134	7106.00	1752.75	-273.67	1747.09	40°13'26.474"N	104°58'03.236"W	0.00	
10617.00†	90.000	90.134	7106.00	1852.73	-273.90	1847.09	40°13'26.472"N	104°58'01.947"W	0.00	
10717.00†	90.000	90.134	7106.00	1952.71	-274.13	1947.09	40°13'26.469"N	104°58'00.657"W	0.00	
10817.00†	90.000	90.134	7106.00	2052.69	-274.37	2047.09	40°13'26.467"N	104°57'59.368"W	0.00	
10917.00†	90.000	90.134	7106.00	2152.67	-274.60	2147.09	40°13'26.465"N	104°57'58.079"W	0.00	
11017.00†	90.000	90.134	7106.00	2252.65	-274.83	2247.09	40°13'26.462"N	104°57'56.790"W	0.00	
11117.00†	90.000	90.134	7106.00	2352.63	-275.06	2347.09	40°13'26.460"N	104°57'55.501"W	0.00	
11217.00†	90.000	90.133	7106.00	2452.61	-275.30	2447.09	40°13'26.457"N	104°57'54.211"W	0.00	
11317.00†	90.000	90.133	7106.00	2552.59	-275.53	2547.09	40°13'26.455"N	104°57'52.922"W	0.00	
11417.00†	90.000	90.133	7106.00	2652.57	-275.76	2647.09	40°13'26.453"N	104°57'51.633"W	0.00	
11517.00†	90.000	90.133	7106.00	2752.55	-276.00	2747.09	40°13'26.450"N	104°57'50.344"W	0.00	
11617.00†	90.000	90.133	7106.00	2852.53	-276.23	2847.09	40°13'26.448"N	104°57'49.055"W	0.00	
11717.00†	90.000	90.133	7106.00	2952.51	-276.46	2947.09	40°13'26.445"N	104°57'47.766"W	0.00	
11817.00†	90.000	90.133	7106.00	3052.49	-276.70	3047.09	40°13'26.443"N	104°57'46.476"W	0.00	
11917.00†	90.000	90.133	7106.00	3152.47	-276.93	3147.09	40°13'26.440"N	104°57'45.187"W	0.00	
12017.00†	90.000	90.133	7106.00	3252.45	-277.16	3247.09	40°13'26.438"N	104°57'43.898"W	0.00	



Planned Wellpath Report

DOCHEFF 33N-13HZ (PERMIT REV-1) PWP



REFERENCE WELLPATH IDENTIFICATION			
Operator	KERR-MCGEE OIL & GAS ONSHORE LP	Slot	SLOT#19 DOCHEFF 33N-13HZ (2127'FSL & 1629'FWL, SEC.14)
Area	COLORADO	Well	DOCHEFF 33N-13HZ
Field	WELD COUNTY (KERR MCGEE)	Wellbore	DOCHEFF 33N-13HZ PWB
Facility	SEC.14-T3N-R68W		

WELLPATH DATA (142 stations) † = interpolated/extrapolated station										
MD [ft]	Inclination [°]	Azimuth [°]	TVD [ft]	Vert Sect [ft]	North [ft]	East [ft]	Latitude	Longitude	DLS [°/100ft]	Comments
12117.00†	90.000	90.133	7106.00	3352.43	-277.39	3347.09	40°13'26.436"N	104°57'42.609"W	0.00	
12217.00†	90.000	90.133	7106.00	3452.41	-277.63	3447.09	40°13'26.433"N	104°57'41.320"W	0.00	
12317.00†	90.000	90.133	7106.00	3552.39	-277.86	3547.08	40°13'26.431"N	104°57'40.030"W	0.00	
12417.00†	90.000	90.133	7106.00	3652.37	-278.09	3647.08	40°13'26.428"N	104°57'38.741"W	0.00	
12517.00†	90.000	90.133	7106.00	3752.35	-278.32	3747.08	40°13'26.426"N	104°57'37.452"W	0.00	
12617.00†	90.000	90.133	7106.00	3852.33	-278.56	3847.08	40°13'26.423"N	104°57'36.163"W	0.00	
12688.84	90.000	90.133	7106.00 ¹	3924.16	-278.72	3918.92	40°13'26.422"N	104°57'35.237"W	0.00	TOTAL DEPTH

HOLE & CASING SECTIONS -									
Ref Wellbore: DOCHEFF 33N-13HZ PWB					Ref Wellpath: DOCHEFF 33N-13HZ (PERMIT REV-1) PWP				
String/Diameter	Start MD [ft]	End MD [ft]	Interval [ft]	Start TVD [ft]	End TVD [ft]	Start N/S [ft]	Start E/W [ft]	End N/S [ft]	End E/W [ft]
13.5in Open Hole	17.00	743.00	726.00	17.00	743.00	0.00	0.00	0.00	0.00
9.625in Casing Surface	17.00	743.00	726.00	17.00	743.00	0.00	0.00	0.00	0.00
8.75in Open Hole	743.00	7742.21	6999.21	743.00	7106.00	0.00	0.00	-267.19	-1027.69
7in Casing Intermediate	17.00	7742.21	7725.21	17.00	7106.00	0.00	0.00	-267.19	-1027.69
6.125in Open Hole	7742.21	12688.84	4946.63	7106.00	7106.00	-267.19	-1027.69	-278.72	3918.92
4.5in Casing Production	17.00	12688.84	12671.84	17.00	7106.00	0.00	0.00	-278.72	3918.92



Planned Wellpath Report

DOCHEFF 33N-13HZ (PERMIT REV-1) PWP



REFERENCE WELLPATH IDENTIFICATION			
Operator	KERR-MCGEE OIL & GAS ONSHORE LP	Slot	SLOT#19 DOCHEFF 33N-13HZ (2127'FSL & 1629'FWL, SEC.14)
Area	COLORADO	Well	DOCHEFF 33N-13HZ
Field	WELD COUNTY (KERR MCGEE)	Wellbore	DOCHEFF 33N-13HZ PWB
Facility	SEC.14-T3N-R68W		

TARGETS									
Name	MD [ft]	TVD [ft]	North [ft]	East [ft]	Grid East [US ft]	Grid North [US ft]	Latitude	Longitude	Shape
SEC.13-T3N-R68W SECTION LINES		0.00	2335.46	8336.24	3155245.81	1327547.17	40°13'52.244"N	104°56'38.278"W	polygon
SEC.14-T3N-R68W SECTION LINES		0.00	2335.46	8336.24	3155245.81	1327547.17	40°13'52.244"N	104°56'38.278"W	polygon
SEC.15-T3N-R68W SECTION LINES		0.00	101.30	64.46	3146987.81	1325264.06	40°13'30.180"N	104°58'24.928"W	polygon
1) DOCHEFF 33N-13HZ BHL ON PLAT REV-1 (1850'FSL & 300'FWL, SEC.13)	12688.84	7106.00	-278.72	3918.92	3150844.28	1324906.94	40°13'26.422"N	104°57'35.237"W	point
DOCHEFF 33N-13HZ BHL REV-2 (1740'FSL & 300'FWL, SEC.13)		7106.00	-388.68	3918.91	3150844.92	1324796.99	40°13'25.335"N	104°57'35.237"W	point
DOCHEFF 33N-13HZ LANDBOX		7106.00	0.00	0.00	3146923.95	1325162.39	40°13'29.179"N	104°58'25.759"W	polygon

SURVEY PROGRAM - Ref Wellbore: DOCHEFF 33N-13HZ PWB Ref Wellpath: DOCHEFF 33N-13HZ (PERMIT REV-1) PWP				
Start MD [ft]	End MD [ft]	Positional Uncertainty Model	Log Name/Comment	Wellbore
17.00	12688.84	NaviTrak (IFR)		DOCHEFF 33N-13HZ PWB



Planned Wellpath Report

DOCHEFF 33N-13HZ (PERMIT REV-1) PWP



REFERENCE WELLPATH IDENTIFICATION			
Operator	KERR-MCGEE OIL & GAS ONSHORE LP	Slot	SLOT#19 DOCHEFF 33N-13HZ (2127'FSL & 1629'FWL, SEC.14)
Area	COLORADO	Well	DOCHEFF 33N-13HZ
Field	WELD COUNTY (KERR MCGEE)	Wellbore	DOCHEFF 33N-13HZ PWB
Facility	SEC.14-T3N-R68W		

WELLPATH COMMENTS					
MD [ft]	Inclination [°]	Azimuth [°]	TVD [ft]	Comment	
551.00	0.000	260.570	551.00	BASE FOX HILLS	
743.00	0.000	260.570	743.00	SURFACE CSG SETTING DEPTH	
3801.61	24.000	260.570	3637.00	PARKMAN	
4308.42	24.000	260.570	4100.00	SUSSEX	
7326.97	48.475	90.134	6962.00	SHARON SPRINGS	
7445.75	60.354	90.134	7031.00	NIOBRARA	
7590.37	74.816	90.134	7086.00	NIOBRARA B	

DESIGN COMMENTS					
MD [ft]	Inclination [°]	Azimuth [°]	TVD [ft]	Comment	
17.00	0.000	260.570	17.00	TIE ON	
1100.00	0.000	260.570	1100.00	BEGIN NUDGE	
2300.00	24.000	260.570	2265.21	END NUDGE	
5071.38	24.000	260.570	4797.00	BEGIN DROP	
6271.38	0.000	90.134	5962.21	END DROP	
6842.21	0.000	90.134	6533.04	KOP, BUILD @ 10°/100'	
7742.21	90.000	90.134	7106.00	LANDING POINT	
12688.84	90.000	90.133	7106.00	TOTAL DEPTH	