



# Kerr-McGee Oil & Gas Onshore LP

A subsidiary of Anadarko Petroleum Corporation

1099 18<sup>th</sup> Street  
Denver, CO 80202  
720-929-6000

September 11, 2014

Department of Natural Resources  
Oil and Gas Conservation Commission  
The Chancery Building  
1120 Lincoln St., Suite 801  
Denver, CO 80203

Re: **30 Day Certification Letter - 318A.e**  
DOCHEFF 12C-15HZ  
Township 3 North, Range 68 West, Section 14: NE/4SW/4  
Unit Spacing: 03N-68W-Sec 14 NW/4SW/4  
03N-68W-Sec 15 N/2S/2  
Weld County, Colorado

Ladies/Gentlemen:

Kerr McGee Oil and Gas Onshore LP (“KMG”) hereby certify to the Director that KMG owns one-hundred percent (100%) of the mineral rights in the proposed spacing unit. Therefore, KMG respectfully requests the Director to approve the boundary well.

If you have any questions or issues regarding this permit, please contact Cheryl Light at (720) 929-6461.

Very truly yours,

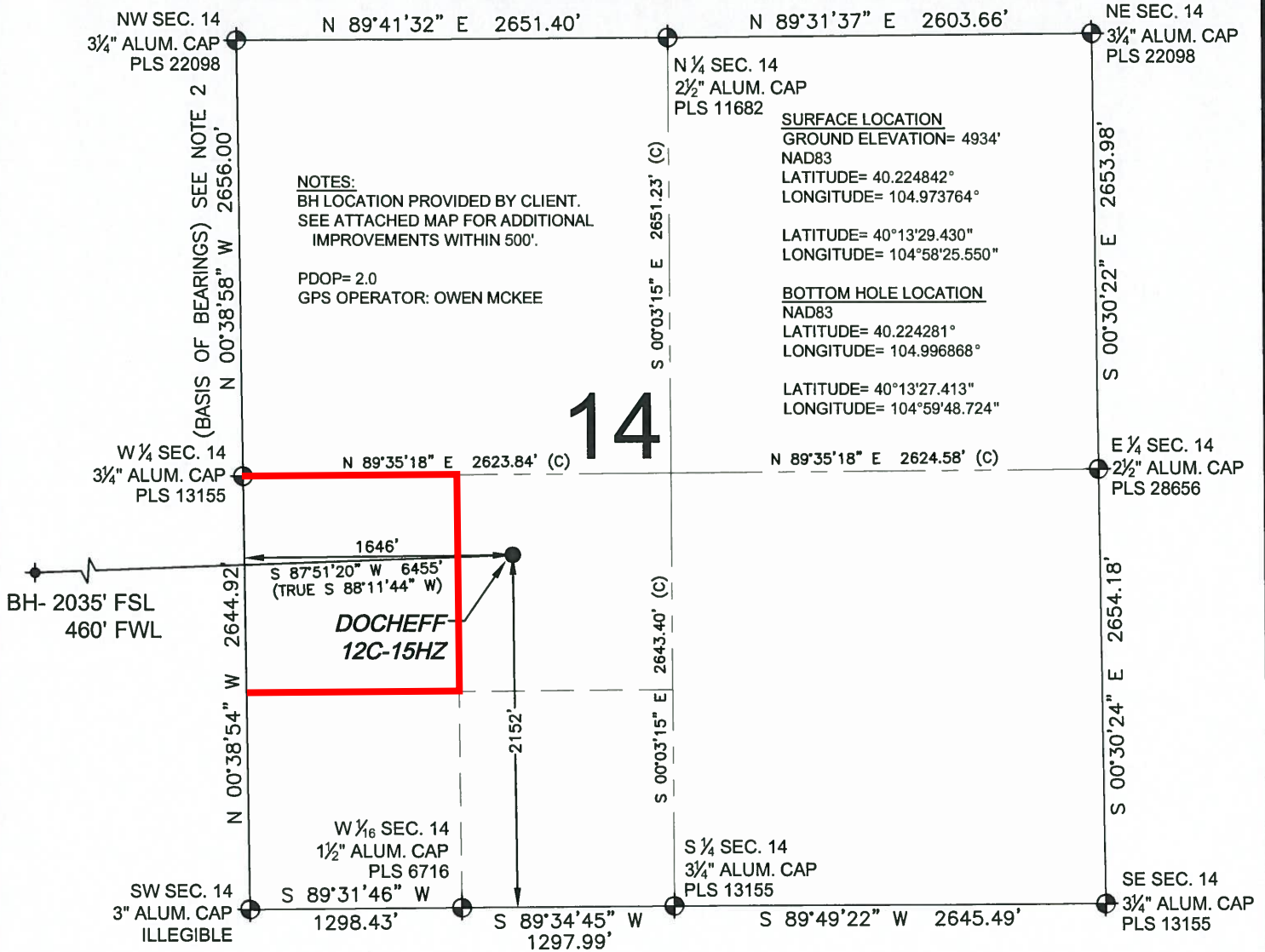
**KERR-McGEE OIL AND GAS ONSHORE LP**

A handwritten signature in black ink, appearing to read 'Mike McConaughy'.

**Mike McConaughy**  
**Sr. Regulatory Analyst**

# WELL LOCATION CERTIFICATE: DOCHEFF 12C-15HZ

SECTION 14, TOWNSHIP 3 NORTH, RANGE 68 WEST, 6TH P.M.



**NOTES:**  
 BH LOCATION PROVIDED BY CLIENT.  
 SEE ATTACHED MAP FOR ADDITIONAL  
 IMPROVEMENTS WITHIN 500'.

PDOP= 2.0  
 GPS OPERATOR: OWEN MCKEE

SURFACE LOCATION  
 GROUND ELEVATION= 4934'  
 NAD83  
 LATITUDE= 40.224842°  
 LONGITUDE= 104.973764°

LATITUDE= 40°13'29.430"  
 LONGITUDE= 104°58'25.550"

BOTTOM HOLE LOCATION  
 NAD83

LATITUDE= 40.224281°  
 LONGITUDE= 104.996868°

LATITUDE= 40°13'27.413"  
 LONGITUDE= 104°59'48.724"

**LEGEND**

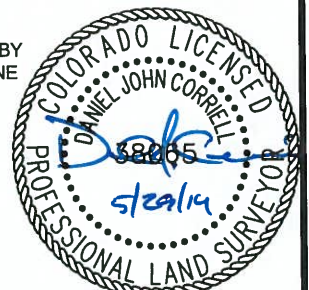
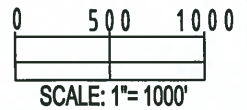
- ⊕ = EXISTING MONUMENT
- ⬠ = PROPOSED WELL
- BH = BOTTOM HOLE
- ◆ = BOTTOM HOLE
- ◆ = EXISTING WELL

**NOTES:**

1. THIS FIELD SURVEY CONFORMS TO THE MINIMUM STANDARDS SET BY THE C.O.G.C.C., RULE NO. 215
2. BEARINGS AND DISTANCE SHOWN HEREON ARE GRID AND BASED ON THE COLORADO STATE PLANE COORDINATE SYSTEM, NAD 83/2011 BETWEEN MONUMENTS AS LABELED HEREON AND ELEVATIONS SHOWN ARE NAVD 88, AS DERIVED BY GPS OBSERVATIONS.
3. GRID DISTANCES ARE SHOWN, AS MEASURED IN THE FIELD, WITH TIES TO WELLS MEASURED PERPENDICULAR TO SECTION LINES.
4. ALL LINES SHOWN THAT ARE WITHOUT DIMENSION SHOULD BE CONSIDERED SCALED AND ONLY REPRESENT A GRAPHICAL DEPICTION OF THE APPROXIMATE LOCATION OF SAID LINE.

I, DANIEL JOHN CORRIELL, A LICENSED PROFESSIONAL LAND SURVEYOR IN THE STATE OF COLORADO DO HEREBY CERTIFY TO **KERR-MCGEE OIL & GAS ONSHORE LP**, THAT THE SURVEY AND WELL LOCATION CERTIFICATE SHOWN HEREON WERE DONE BY ME OR UNDER MY DIRECT SUPERVISION AND THAT THE DRAWING SHOWN HEREON ACCURATELY DEPICTS THE PROPOSED LOCATION OF THE WELL. THIS CERTIFICATE DOES NOT REPRESENT A LAND SURVEY PLAT OR IMPROVEMENT SURVEY PLAT AS DEFINED BY C.R.S. 38-51-102 AND CANNOT BE RELIED UPON TO DETERMINE OWNERSHIP.

DANIEL JOHN CORRIELL, PLS 38065  
 COLORADO LICENSED PROFESSIONAL LAND SURVEYOR  
 FOR AND ON BEHALF OF P.F.S., LLC



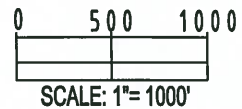
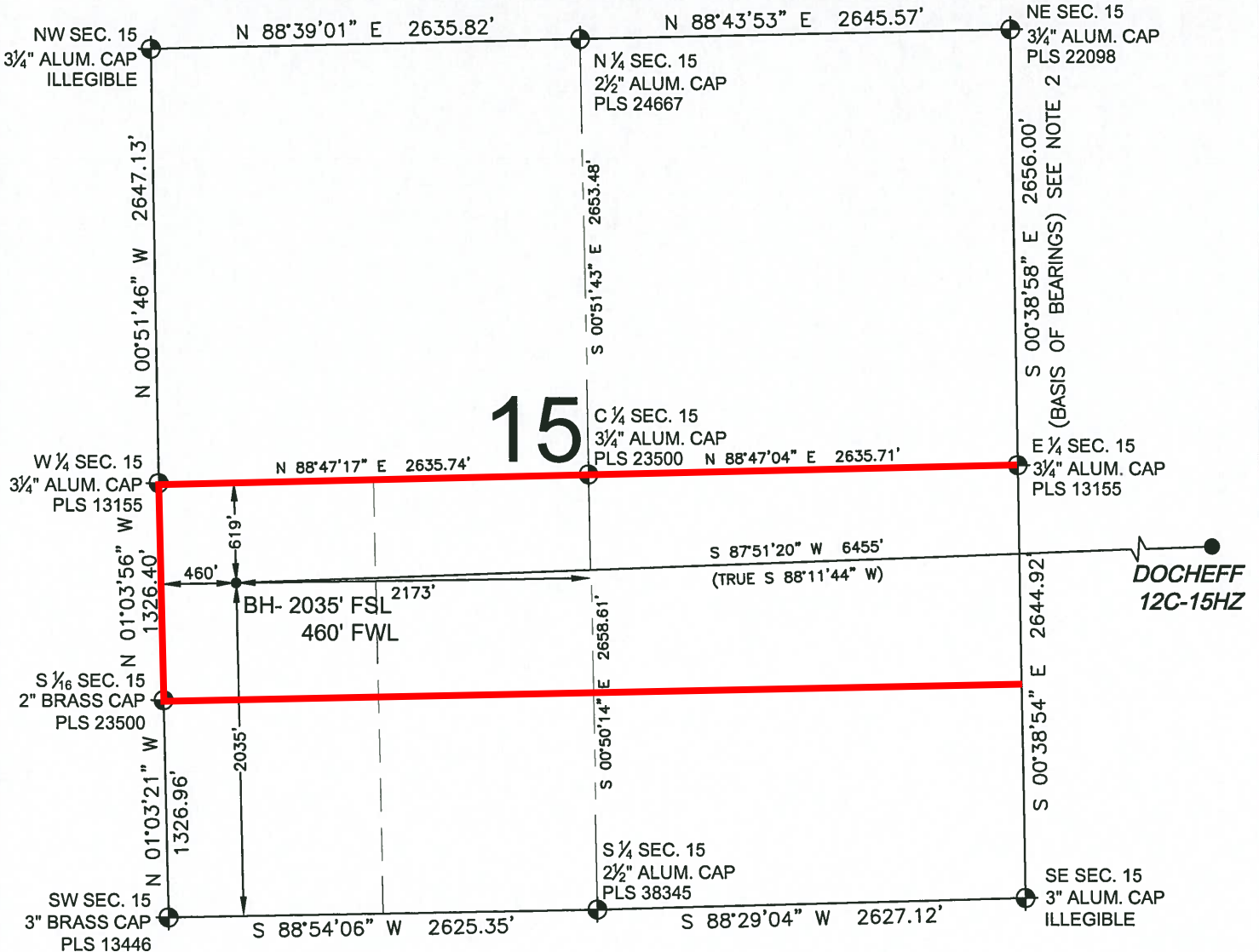
SHEET 1 OF 2

PREPARED BY: <b>PFS</b> Petroleum Field Services, LLC 7536 Hilltop Circle Denver, CO 80221	FIELD DATE: 05-09-14	SURFACE LOCATION: NE 1/4 SW 1/4, SEC. 14, T3N, R68W, 6TH P.M.
BY: SNC	CHECKED: LCB	WELD COUNTY, COLORADO

NOTICE: ACCORDING TO COLORADO LAW YOU MUST COMMENCE ANY LEGAL ACTION BASED UPON ANY DEFECT IN THIS SURVEY WITHIN THREE YEARS AFTER YOU FIRST DISCOVER SUCH DEFECT. IN NO EVENT MAY ANY ACTION BASED UPON ANY DEFECT IN THIS SURVEY BE COMMENCED MORE THAN TEN YEARS FROM THIS SAID DATE OF THIS CERTIFICATION SHOWN HEREON.

# WELL LOCATION CERTIFICATE: DOCHEFF 12C-15HZ

SECTION 15, TOWNSHIP 3 NORTH, RANGE 68 WEST, 6TH P.M.



**NOTES:**

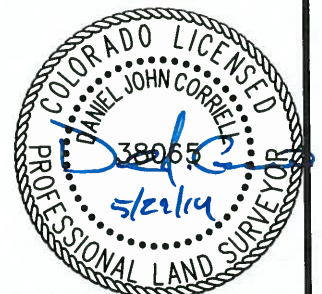
1. THIS FIELD SURVEY CONFORMS TO THE MINIMUM STANDARDS SET BY THE C.O.G.C.C., RULE NO. 215
2. BEARINGS AND DISTANCE SHOWN HEREON ARE GRID AND BASED ON THE COLORADO STATE PLANE COORDINATE SYSTEM, NAD 83/2011 BETWEEN MONUMENTS AS LABELED HEREON AND ELEVATIONS SHOWN ARE NAVD 88, AS DERIVED BY GPS OBSERVATIONS.
3. GRID DISTANCES ARE SHOWN, AS MEASURED IN THE FIELD, WITH TIES TO WELLS MEASURED PERPENDICULAR TO SECTION LINES.
4. ALL LINES SHOWN THAT ARE WITHOUT DIMENSION SHOULD BE CONSIDERED SCALED AND ONLY REPRESENT A GRAPHICAL DEPICTION OF THE APPROXIMATE LOCATION OF SAID LINE.


**LEGEND**

- ⊕ = EXISTING MONUMENT    ⊕ = BOTTOM HOLE
- = PROPOSED WELL        ◆ = EXISTING WELL
- BH = BOTTOM HOLE

SHEET 2 OF 2

DANIEL JOHN CORRIELL, PLS 38065  
 COLORADO LICENSED PROFESSIONAL LAND SURVEYOR  
 FOR AND ON BEHALF OF P.F.S., LLC



PREPARED BY:  Petroleum Field Services, LLC 7535 Hilltop Circle Denver, CO 80221	FIELD DATE: 05-09-14	SURFACE LOCATION: NE 1/4 SW 1/4, SEC. 14, T3N, R68W, 6TH P.M.
	DRAWING DATE: 05-28-14	BY:      CHECKED: SNC      LCB

NOTICE: ACCORDING TO COLORADO LAW YOU MUST COMMENCE ANY LEGAL ACTION BASED UPON ANY DEFECT IN THIS SURVEY WITHIN THREE YEARS AFTER YOU FIRST DISCOVER SUCH DEFECT. IN NO EVENT MAY ANY ACTION BASED UPON ANY DEFECT IN THIS SURVEY BE COMMENCED MORE THAN TEN YEARS FROM THIS SAID DATE OF THIS CERTIFICATION SHOWN HEREON.