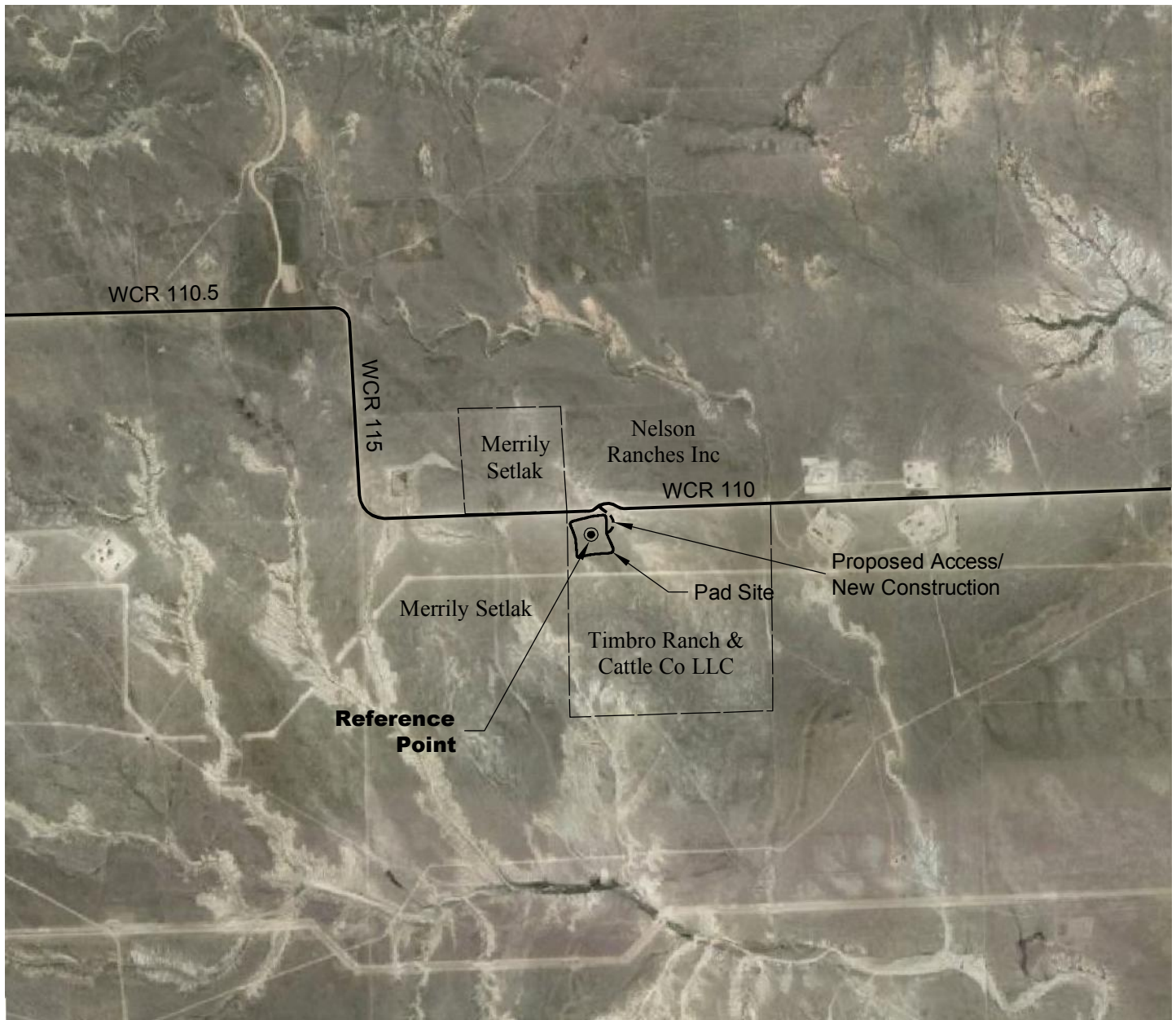


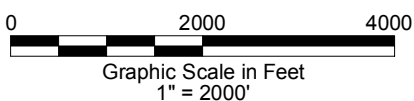
ACCESS ROAD MAP



DRIVING DIRECTIONS:

From Town of Keota, beginning at intersection of WCR 390 & WCR 103; North on WCR 390
 MP 3.5 Right on WCR 104
 MP 9.3 Left on WCR 111
 MP 12.3 Right on WCR 110
 MP 13.3 Left on WCR 113
 MP 13.8 Right on WCR 110.5
 MP 14.8 Right on WCR 115
 MP 15.3 Left on WCR 110
 MP 15.8 Right on Access to Timbro Ranch 1-3-9-59 Pad
 MP 15.9 Timbro Ranch 1-3-9-59 Pad

10/7/14



LAND SURVEYING AND MAPPING
 LAFAYETTE - WINTER PARK
 Ph 303 666 0379 Fx 303 665 6320

CARRIZO NIOBRARA LLC
TIMBRO RANCH 1-3-9-59 PAD

LOT 2 SECTION 3 T9N R59W
6th PM WELD COUNTY COLORADO