

Synergy Resources

Well Name: **SRC Weis A-9NHZ**

Surface Location: SRC Kiehn Pad Sec.4-T4N-R68W
North American Datum 1983 , US State Plane 1983 , Colorado Northern Zone

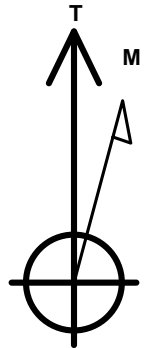
Ground Elevation: 5064.0

+N/-S	+E/-W	Northing	Easting	Latitude	Longitude	Slot
0.0	0.0	1365529.54	3137884.18	40.335724	-105.005389	

Original Well Elev WELL @ 5077.0ft (Original Well Elev)

WELLBORE TARGET DETAILS

Name	TVD	+N/-S	+E/-W	Shape
SHL 171'FSL & 1809'FEL, Sec.4	1.0	0.0	0.0	Point
BHL 1530'FNL & 460'FSL, Sec.9	7045.0	-1754.7	-3005.8	Point



Azimuths to True North
Magnetic North: 8.54°

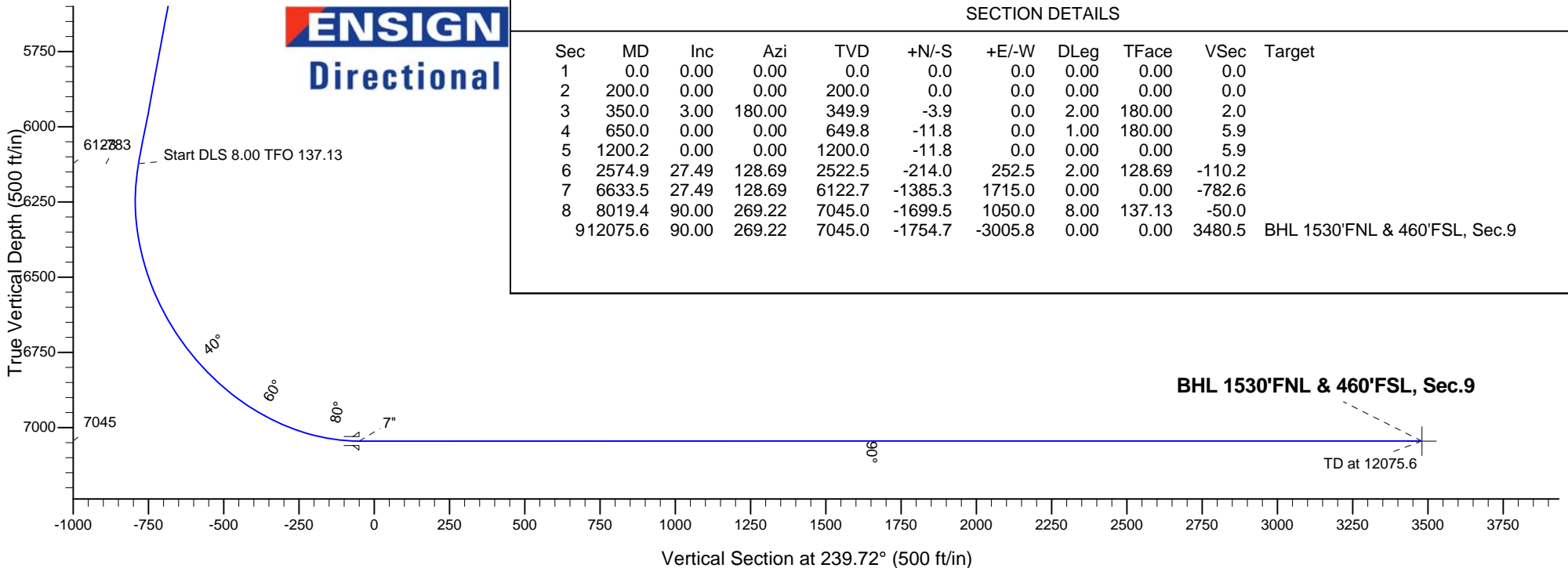
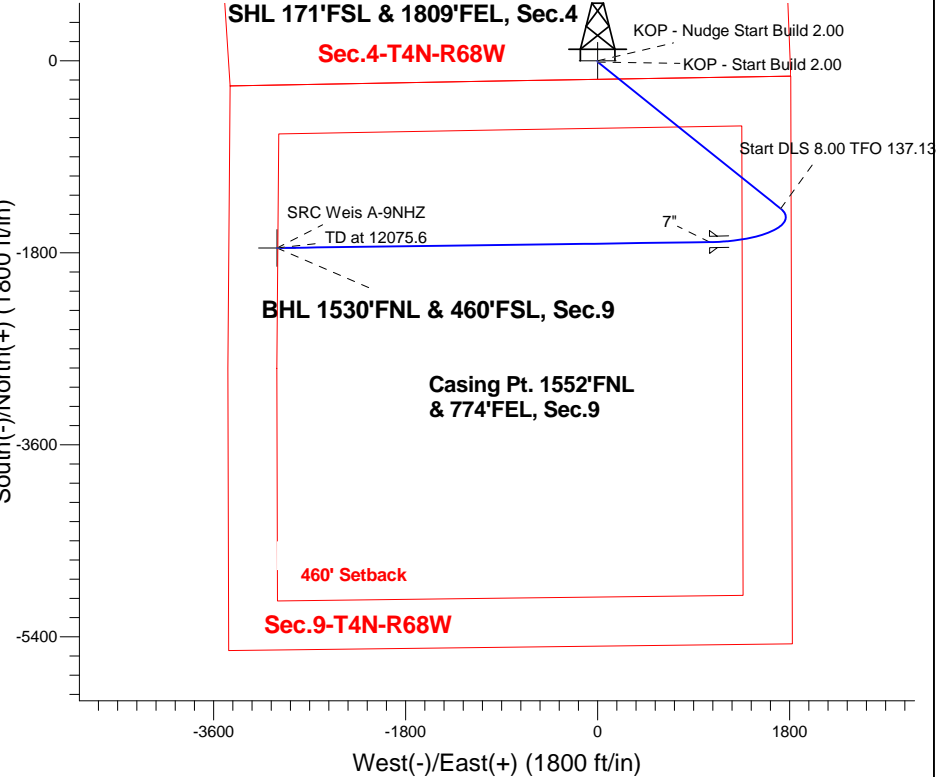
Magnetic Field
Strength: 52722.9snT
Dip Angle: 66.85°
Date: 10/2/2014
Model: IGRF2010

ANNOTATIONS

TVD	MD	Annotation
200.0	200.0	KOP - Nudge Start Build 2.00
349.9	350.0	Start Drop -1.00
1200.0	1200.2	KOP - Start Build 2.00
6122.7	6633.5	Start DLS 8.00 TFO 137.13
7045.0	12075.6	TD at 12075.6

SRC Kiehn Pad Sec.4-T4N-R68W
SRC Weis A-9NHZ
Plan #1 (10-2-14)
15:54, October 03 2014

South(-)/North(+) (1800 ft/in)



SECTION DETAILS

Sec	MD	Inc	Azi	TVD	+N/-S	+E/-W	DLeg	TFace	VSec	Target
1	0.0	0.00	0.00	0.0	0.0	0.0	0.00	0.00	0.0	
2	200.0	0.00	0.00	200.0	0.0	0.0	0.00	0.00	0.0	
3	350.0	3.00	180.00	349.9	-3.9	0.0	2.00	180.00	2.0	
4	650.0	0.00	0.00	649.8	-11.8	0.0	1.00	180.00	5.9	
5	1200.2	0.00	0.00	1200.0	-11.8	0.0	0.00	0.00	5.9	
6	2574.9	27.49	128.69	2522.5	-214.0	252.5	2.00	128.69	-110.2	
7	6633.5	27.49	128.69	6122.7	-1385.3	1715.0	0.00	0.00	-782.6	
8	8019.4	90.00	269.22	7045.0	-1699.5	1050.0	8.00	137.13	-50.0	
9	12075.6	90.00	269.22	7045.0	-1754.7	-3005.8	0.00	0.00	3480.5	BHL 1530'FNL & 460'FSL, Sec.9



Synergy Resources

SEC.4-T4N-R68W

SRC Kiehn Pad Sec.4-T4N-R68W

SRC Weis A-9NHZ

Wellbore #1

Plan: Plan #1 (10-2-14)

Standard Planning Report

03 October, 2014

Plan Sections										
Measured Depth (ft)	Inclination (°)	Azimuth (°)	Vertical Depth (ft)	+N/-S (ft)	+E/-W (ft)	Dogleg Rate (°/100ft)	Build Rate (°/100ft)	Turn Rate (°/100ft)	TFO (°)	Target
0.0	0.00	0.00	0.0	0.0	0.0	0.00	0.00	0.00	0.00	
200.0	0.00	0.00	200.0	0.0	0.0	0.00	0.00	0.00	0.00	
350.0	3.00	180.00	349.9	-3.9	0.0	2.00	2.00	0.00	180.00	
650.0	0.00	0.00	649.8	-11.8	0.0	1.00	-1.00	0.00	180.00	
1,200.2	0.00	0.00	1,200.0	-11.8	0.0	0.00	0.00	0.00	0.00	
2,574.9	27.49	128.69	2,522.5	-214.0	252.5	2.00	2.00	0.00	128.69	
6,633.5	27.49	128.69	6,122.7	-1,385.3	1,715.0	0.00	0.00	0.00	0.00	
8,019.4	90.00	269.22	7,045.0	-1,699.5	1,050.0	8.00	4.51	10.14	137.13	
12,075.6	90.00	269.22	7,045.0	-1,754.7	-3,005.8	0.00	0.00	0.00	0.00	BHL 1530'FNL & 46

Database:	Landmark	Local Co-ordinate Reference:	Well SRC Weis A-9NHZ
Company:	Synergy Resources	TVD Reference:	WELL @ 5077.0ft (Original Well Elev)
Project:	SEC.4-T4N-R68W	MD Reference:	WELL @ 5077.0ft (Original Well Elev)
Site:	SRC Kiehn Pad Sec.4-T4N-R68W	North Reference:	True
Well:	SRC Weis A-9NHZ	Survey Calculation Method:	Minimum Curvature
Wellbore:	Wellbore #1		
Design:	Plan #1 (10-2-14)		

Planned Survey									
Measured Depth (ft)	Inclination (°)	Azimuth (°)	Vertical Depth (ft)	+N/-S (ft)	+E/-W (ft)	Vertical Section (ft)	Dogleg Rate (°/100ft)	Build Rate (°/100ft)	Turn Rate (°/100ft)
0.0	0.00	0.00	0.0	0.0	0.0	0.0	0.00	0.00	0.00
100.0	0.00	0.00	100.0	0.0	0.0	0.0	0.00	0.00	0.00
200.0	0.00	0.00	200.0	0.0	0.0	0.0	0.00	0.00	0.00
KOP - Nudge Start Build 2.00									
300.0	2.00	180.00	300.0	-1.7	0.0	0.9	2.00	2.00	0.00
350.0	3.00	180.00	349.9	-3.9	0.0	2.0	2.00	2.00	0.00
Start Drop -1.00									
400.0	2.50	180.00	399.9	-6.3	0.0	3.2	1.00	-1.00	0.00
500.0	1.50	180.00	499.8	-9.8	0.0	4.9	1.00	-1.00	0.00
600.0	0.50	180.00	599.8	-11.6	0.0	5.8	1.00	-1.00	0.00
650.0	0.00	0.00	649.8	-11.8	0.0	5.9	1.00	-1.00	0.00
700.0	0.00	0.00	699.8	-11.8	0.0	5.9	0.00	0.00	0.00
800.0	0.00	0.00	799.8	-11.8	0.0	5.9	0.00	0.00	0.00
900.0	0.00	0.00	899.8	-11.8	0.0	5.9	0.00	0.00	0.00
1,000.0	0.00	0.00	999.8	-11.8	0.0	5.9	0.00	0.00	0.00
1,100.0	0.00	0.00	1,099.8	-11.8	0.0	5.9	0.00	0.00	0.00
1,200.0	0.00	0.00	1,199.8	-11.8	0.0	5.9	0.00	0.00	0.00
1,200.2	0.00	0.00	1,200.0	-11.8	0.0	5.9	0.00	0.00	0.00
KOP - Start Build 2.00									
1,300.0	2.00	128.69	1,299.8	-12.9	1.4	5.3	2.00	2.00	0.00
1,400.0	4.00	128.69	1,399.6	-16.1	5.4	3.4	2.00	2.00	0.00
1,500.0	6.00	128.69	1,499.2	-21.6	12.2	0.3	2.00	2.00	0.00
1,600.0	8.00	128.69	1,598.5	-29.2	21.7	-4.1	2.00	2.00	0.00
1,700.0	10.00	128.69	1,697.3	-39.0	33.9	-9.7	2.00	2.00	0.00
1,800.0	12.00	128.69	1,795.4	-50.9	48.8	-16.5	2.00	2.00	0.00
1,900.0	14.00	128.69	1,892.9	-64.9	66.4	-24.6	2.00	2.00	0.00
2,000.0	16.00	128.69	1,989.4	-81.1	86.6	-33.9	2.00	2.00	0.00
2,100.0	18.00	128.69	2,085.1	-99.4	109.4	-44.4	2.00	2.00	0.00
2,200.0	20.00	128.69	2,179.6	-119.7	134.8	-56.0	2.00	2.00	0.00
2,300.0	22.00	128.69	2,273.0	-142.1	162.8	-68.9	2.00	2.00	0.00
2,400.0	24.00	128.69	2,365.0	-166.6	193.2	-82.9	2.00	2.00	0.00
2,500.0	26.00	128.69	2,455.7	-193.0	226.2	-98.1	2.00	2.00	0.00
2,574.9	27.49	128.69	2,522.5	-214.0	252.5	-110.2	2.00	2.00	0.00
2,600.0	27.49	128.69	2,544.8	-221.3	261.6	-114.3	0.00	0.00	0.00
2,700.0	27.49	128.69	2,633.5	-250.1	297.6	-130.9	0.00	0.00	0.00
2,800.0	27.49	128.69	2,722.2	-279.0	333.6	-147.5	0.00	0.00	0.00
2,900.0	27.49	128.69	2,810.9	-307.9	369.7	-164.1	0.00	0.00	0.00
3,000.0	27.49	128.69	2,899.6	-336.7	405.7	-180.6	0.00	0.00	0.00
3,100.0	27.49	128.69	2,988.3	-365.6	441.7	-197.2	0.00	0.00	0.00
3,200.0	27.49	128.69	3,077.0	-394.4	477.8	-213.8	0.00	0.00	0.00
3,300.0	27.49	128.69	3,165.7	-423.3	513.8	-230.3	0.00	0.00	0.00
3,400.0	27.49	128.69	3,254.5	-452.2	549.8	-246.9	0.00	0.00	0.00
3,500.0	27.49	128.69	3,343.2	-481.0	585.9	-263.5	0.00	0.00	0.00
3,600.0	27.49	128.69	3,431.9	-509.9	621.9	-280.0	0.00	0.00	0.00
3,700.0	27.49	128.69	3,520.6	-538.7	657.9	-296.6	0.00	0.00	0.00
3,800.0	27.49	128.69	3,609.3	-567.6	694.0	-313.2	0.00	0.00	0.00
3,900.0	27.49	128.69	3,698.0	-596.4	730.0	-329.7	0.00	0.00	0.00
4,000.0	27.49	128.69	3,786.7	-625.3	766.0	-346.3	0.00	0.00	0.00
4,100.0	27.49	128.69	3,875.4	-654.2	802.1	-362.9	0.00	0.00	0.00
4,200.0	27.49	128.69	3,964.1	-683.0	838.1	-379.4	0.00	0.00	0.00
4,300.0	27.49	128.69	4,052.8	-711.9	874.1	-396.0	0.00	0.00	0.00
4,400.0	27.49	128.69	4,141.5	-740.7	910.2	-412.6	0.00	0.00	0.00
4,500.0	27.49	128.69	4,230.2	-769.6	946.2	-429.2	0.00	0.00	0.00

Database:	Landmark	Local Co-ordinate Reference:	Well SRC Weis A-9NHZ
Company:	Synergy Resources	TVD Reference:	WELL @ 5077.0ft (Original Well Elev)
Project:	SEC.4-T4N-R68W	MD Reference:	WELL @ 5077.0ft (Original Well Elev)
Site:	SRC Kiehn Pad Sec.4-T4N-R68W	North Reference:	True
Well:	SRC Weis A-9NHZ	Survey Calculation Method:	Minimum Curvature
Wellbore:	Wellbore #1		
Design:	Plan #1 (10-2-14)		

Planned Survey									
Measured Depth (ft)	Inclination (°)	Azimuth (°)	Vertical Depth (ft)	+N/-S (ft)	+E/-W (ft)	Vertical Section (ft)	Dogleg Rate (°/100ft)	Build Rate (°/100ft)	Turn Rate (°/100ft)
4,600.0	27.49	128.69	4,318.9	-798.5	982.2	-445.7	0.00	0.00	0.00
4,700.0	27.49	128.69	4,407.6	-827.3	1,018.3	-462.3	0.00	0.00	0.00
4,800.0	27.49	128.69	4,496.3	-856.2	1,054.3	-478.9	0.00	0.00	0.00
4,900.0	27.49	128.69	4,585.0	-885.0	1,090.3	-495.4	0.00	0.00	0.00
5,000.0	27.49	128.69	4,673.8	-913.9	1,126.4	-512.0	0.00	0.00	0.00
5,100.0	27.49	128.69	4,762.5	-942.8	1,162.4	-528.6	0.00	0.00	0.00
5,200.0	27.49	128.69	4,851.2	-971.6	1,198.4	-545.1	0.00	0.00	0.00
5,300.0	27.49	128.69	4,939.9	-1,000.5	1,234.5	-561.7	0.00	0.00	0.00
5,400.0	27.49	128.69	5,028.6	-1,029.3	1,270.5	-578.3	0.00	0.00	0.00
5,500.0	27.49	128.69	5,117.3	-1,058.2	1,306.5	-594.8	0.00	0.00	0.00
5,600.0	27.49	128.69	5,206.0	-1,087.1	1,342.6	-611.4	0.00	0.00	0.00
5,700.0	27.49	128.69	5,294.7	-1,115.9	1,378.6	-628.0	0.00	0.00	0.00
5,800.0	27.49	128.69	5,383.4	-1,144.8	1,414.6	-644.6	0.00	0.00	0.00
5,900.0	27.49	128.69	5,472.1	-1,173.6	1,450.7	-661.1	0.00	0.00	0.00
6,000.0	27.49	128.69	5,560.8	-1,202.5	1,486.7	-677.7	0.00	0.00	0.00
6,100.0	27.49	128.69	5,649.5	-1,231.3	1,522.7	-694.3	0.00	0.00	0.00
6,200.0	27.49	128.69	5,738.2	-1,260.2	1,558.8	-710.8	0.00	0.00	0.00
6,300.0	27.49	128.69	5,826.9	-1,289.1	1,594.8	-727.4	0.00	0.00	0.00
6,400.0	27.49	128.69	5,915.6	-1,317.9	1,630.8	-744.0	0.00	0.00	0.00
6,500.0	27.49	128.69	6,004.3	-1,346.8	1,666.9	-760.5	0.00	0.00	0.00
6,600.0	27.49	128.69	6,093.1	-1,375.6	1,702.9	-777.1	0.00	0.00	0.00
6,633.5	27.49	128.69	6,122.8	-1,385.3	1,715.0	-782.7	0.00	0.00	0.00
Start DLS 8.00 TFO 137.13									
6,700.0	23.85	137.67	6,182.7	-1,404.9	1,736.0	-791.0	8.00	-5.48	13.51
6,800.0	19.75	156.33	6,275.7	-1,435.3	1,756.5	-793.3	8.00	-4.09	18.66
6,900.0	18.31	180.64	6,370.3	-1,466.6	1,763.1	-783.2	8.00	-1.44	24.31
7,000.0	20.10	204.52	6,464.9	-1,498.0	1,755.8	-761.1	8.00	1.79	23.88
7,100.0	24.42	222.44	6,557.5	-1,528.9	1,734.6	-727.2	8.00	4.32	17.92
7,200.0	30.20	234.58	6,646.4	-1,558.8	1,700.1	-682.4	8.00	5.78	12.14
7,300.0	36.76	242.93	6,729.8	-1,587.0	1,652.9	-627.4	8.00	6.56	8.35
7,400.0	43.74	248.99	6,806.2	-1,613.1	1,593.9	-563.3	8.00	6.98	6.07
7,500.0	50.97	253.66	6,873.9	-1,636.4	1,524.3	-491.4	8.00	7.23	4.67
7,600.0	58.35	257.45	6,931.7	-1,656.6	1,445.3	-413.0	8.00	7.38	3.79
7,700.0	65.82	260.68	6,978.5	-1,673.3	1,358.6	-329.7	8.00	7.48	3.23
7,800.0	73.36	263.55	7,013.3	-1,686.1	1,265.9	-243.2	8.00	7.54	2.87
7,900.0	80.93	266.19	7,035.6	-1,694.8	1,168.8	-155.0	8.00	7.57	2.65
8,000.0	88.52	268.73	7,044.7	-1,699.2	1,069.4	-66.9	8.00	7.59	2.54
8,019.4	90.00	269.22	7,045.0	-1,699.5	1,050.0	-50.0	8.00	7.60	2.51
7"									
8,100.0	90.00	269.22	7,045.0	-1,700.6	969.4	20.2	0.00	0.00	0.00
8,200.0	90.00	269.22	7,045.0	-1,702.0	869.4	107.2	0.00	0.00	0.00
8,300.0	90.00	269.22	7,045.0	-1,703.3	769.5	194.2	0.00	0.00	0.00
8,400.0	90.00	269.22	7,045.0	-1,704.7	669.5	281.3	0.00	0.00	0.00
8,500.0	90.00	269.22	7,045.0	-1,706.0	569.5	368.3	0.00	0.00	0.00
8,600.0	90.00	269.22	7,045.0	-1,707.4	469.5	455.3	0.00	0.00	0.00
8,700.0	90.00	269.22	7,045.0	-1,708.8	369.5	542.4	0.00	0.00	0.00
8,800.0	90.00	269.22	7,045.0	-1,710.1	269.5	629.4	0.00	0.00	0.00
8,900.0	90.00	269.22	7,045.0	-1,711.5	169.5	716.5	0.00	0.00	0.00
9,000.0	90.00	269.22	7,045.0	-1,712.8	69.5	803.5	0.00	0.00	0.00
9,100.0	90.00	269.22	7,045.0	-1,714.2	-30.5	890.5	0.00	0.00	0.00
9,200.0	90.00	269.22	7,045.0	-1,715.6	-130.5	977.6	0.00	0.00	0.00
9,300.0	90.00	269.22	7,045.0	-1,716.9	-230.5	1,064.6	0.00	0.00	0.00
9,400.0	90.00	269.22	7,045.0	-1,718.3	-330.4	1,151.7	0.00	0.00	0.00
9,500.0	90.00	269.22	7,045.0	-1,719.7	-430.4	1,238.7	0.00	0.00	0.00

Database:	Landmark	Local Co-ordinate Reference:	Well SRC Weis A-9NHZ
Company:	Synergy Resources	TVD Reference:	WELL @ 5077.0ft (Original Well Elev)
Project:	SEC.4-T4N-R68W	MD Reference:	WELL @ 5077.0ft (Original Well Elev)
Site:	SRC Kiehn Pad Sec.4-T4N-R68W	North Reference:	True
Well:	SRC Weis A-9NHZ	Survey Calculation Method:	Minimum Curvature
Wellbore:	Wellbore #1		
Design:	Plan #1 (10-2-14)		

Planned Survey										
Measured Depth (ft)	Inclination (°)	Azimuth (°)	Vertical Depth (ft)	+N/-S (ft)	+E/-W (ft)	Vertical Section (ft)	Dogleg Rate (°/100ft)	Build Rate (°/100ft)	Turn Rate (°/100ft)	
9,600.0	90.00	269.22	7,045.0	-1,721.0	-530.4	1,325.7	0.00	0.00	0.00	
9,700.0	90.00	269.22	7,045.0	-1,722.4	-630.4	1,412.8	0.00	0.00	0.00	
9,800.0	90.00	269.22	7,045.0	-1,723.7	-730.4	1,499.8	0.00	0.00	0.00	
9,900.0	90.00	269.22	7,045.0	-1,725.1	-830.4	1,586.9	0.00	0.00	0.00	
10,000.0	90.00	269.22	7,045.0	-1,726.5	-930.4	1,673.9	0.00	0.00	0.00	
10,100.0	90.00	269.22	7,045.0	-1,727.8	-1,030.4	1,760.9	0.00	0.00	0.00	
10,200.0	90.00	269.22	7,045.0	-1,729.2	-1,130.4	1,848.0	0.00	0.00	0.00	
10,300.0	90.00	269.22	7,045.0	-1,730.5	-1,230.4	1,935.0	0.00	0.00	0.00	
10,400.0	90.00	269.22	7,045.0	-1,731.9	-1,330.3	2,022.1	0.00	0.00	0.00	
10,500.0	90.00	269.22	7,045.0	-1,733.3	-1,430.3	2,109.1	0.00	0.00	0.00	
10,600.0	90.00	269.22	7,045.0	-1,734.6	-1,530.3	2,196.1	0.00	0.00	0.00	
10,700.0	90.00	269.22	7,045.0	-1,736.0	-1,630.3	2,283.2	0.00	0.00	0.00	
10,800.0	90.00	269.22	7,045.0	-1,737.4	-1,730.3	2,370.2	0.00	0.00	0.00	
10,900.0	90.00	269.22	7,045.0	-1,738.7	-1,830.3	2,457.3	0.00	0.00	0.00	
11,000.0	90.00	269.22	7,045.0	-1,740.1	-1,930.3	2,544.3	0.00	0.00	0.00	
11,100.0	90.00	269.22	7,045.0	-1,741.4	-2,030.3	2,631.3	0.00	0.00	0.00	
11,200.0	90.00	269.22	7,045.0	-1,742.8	-2,130.3	2,718.4	0.00	0.00	0.00	
11,300.0	90.00	269.22	7,045.0	-1,744.2	-2,230.3	2,805.4	0.00	0.00	0.00	
11,400.0	90.00	269.22	7,045.0	-1,745.5	-2,330.3	2,892.5	0.00	0.00	0.00	
11,500.0	90.00	269.22	7,045.0	-1,746.9	-2,430.2	2,979.5	0.00	0.00	0.00	
11,600.0	90.00	269.22	7,045.0	-1,748.2	-2,530.2	3,066.5	0.00	0.00	0.00	
11,700.0	90.00	269.22	7,045.0	-1,749.6	-2,630.2	3,153.6	0.00	0.00	0.00	
11,800.0	90.00	269.22	7,045.0	-1,751.0	-2,730.2	3,240.6	0.00	0.00	0.00	
11,900.0	90.00	269.22	7,045.0	-1,752.3	-2,830.2	3,327.7	0.00	0.00	0.00	
12,000.0	90.00	269.22	7,045.0	-1,753.7	-2,930.2	3,414.7	0.00	0.00	0.00	
12,075.6	90.00	269.22	7,045.0	-1,754.7	-3,005.8	3,480.5	0.00	0.00	0.00	

Targets										
Target Name	Dip Angle (°)	Dip Dir. (°)	TVD (ft)	+N/-S (ft)	+E/-W (ft)	Northing (ft)	Easting (ft)	Latitude	Longitude	
- hit/miss target										
- Shape										
BHL 1530'FNL & 460'	0.00	0.00	7,045.0	-1,754.7	-3,005.8	1,363,758.20	3,134,888.33	40.330907	-105.016170	
- plan hits target center										
- Point										
SHL 171'FSL & 1809'I	0.00	0.00	1.0	0.0	0.0	1,365,529.55	3,137,884.18	40.335724	-105.005389	
- plan hits target center										
- Point										

Casing Points										
Measured Depth (ft)	Vertical Depth (ft)	Name	Casing Diameter (")	Hole Diameter (")						
8,019.4	7,045.0	7"	7	7-1/2						

Database:	Landmark	Local Co-ordinate Reference:	Well SRC Weis A-9NHZ
Company:	Synergy Resources	TVD Reference:	WELL @ 5077.0ft (Original Well Elev)
Project:	SEC.4-T4N-R68W	MD Reference:	WELL @ 5077.0ft (Original Well Elev)
Site:	SRC Kiehn Pad Sec.4-T4N-R68W	North Reference:	True
Well:	SRC Weis A-9NHZ	Survey Calculation Method:	Minimum Curvature
Wellbore:	Wellbore #1		
Design:	Plan #1 (10-2-14)		

Plan Annotations				
Measured Depth (ft)	Vertical Depth (ft)	Local Coordinates		Comment
		+N/-S (ft)	+E/-W (ft)	
200.0	200.0	0.0	0.0	KOP - Nudge Start Build 2.00
350.0	349.9	-3.9	0.0	Start Drop -1.00
1,200.2	1,200.0	-11.8	0.0	KOP - Start Build 2.00
6,633.5	6,122.7	-11.8	0.0	Start DLS 8.00 TFO 137.13
12,075.6	7,045.0	-214.0	252.5	TD at 12075.6



Synergy Resources

SEC.4-T4N-R68W

SRC Kiehn Pad Sec.4-T4N-R68W

SRC Weis A-9NHZ

Wellbore #1

Plan #1 (10-2-14)

Anticollision Report

03 October, 2014

Company:	Synergy Resources	Local Co-ordinate Reference:	Well SRC Weis A-9NHZ
Project:	SEC.4-T4N-R68W	TVD Reference:	WELL @ 5077.0ft (Original Well Elev)
Reference Site:	SRC Kiehn Pad Sec.4-T4N-R68W	MD Reference:	WELL @ 5077.0ft (Original Well Elev)
Site Error:	0.0ft	North Reference:	True
Reference Well:	SRC Weis A-9NHZ	Survey Calculation Method:	Minimum Curvature
Well Error:	0.0ft	Output errors are at	2.00 sigma
Reference Wellbore	Wellbore #1	Database:	Landmark
Reference Design:	Plan #1 (10-2-14)	Offset TVD Reference:	Offset Datum

Reference	Plan #1 (10-2-14)		
Filter type:	NO GLOBAL FILTER: Using user defined selection & filtering criteria		
Interpolation Method:	MD Interval 100.0ft	Error Model:	ISCWSA
Depth Range:	Unlimited	Scan Method:	Closest Approach 3D
Results Limited by:	Maximum center-center distance of 1,000.0ft	Error Surface:	Elliptical Conic
Warning Levels Evaluated at:	2.00 Sigma		

Survey Tool Program	Date 10/3/2014			
From (ft)	To (ft)	Survey (Wellbore)	Tool Name	Description
0.0	12,075.6	Plan #1 (10-2-14) (Wellbore #1)	MWD	MWD - Standard

Summary						
Site Name	Reference Measured Depth (ft)	Offset Measured Depth (ft)	Distance Between Centres (ft)	Distance Between Ellipses (ft)	Separation Factor	Warning
Offset Well - Wellbore - Design						
SRC Kiehn Pad Sec.4-T4N-R68W						
SRC Kiehn 22-4CHZ - Wellbore #1 - Plan #2 (4-25-14)	200.0	200.0	71.2	70.5	105.585	CC, ES
SRC Kiehn 22-4CHZ - Wellbore #1 - Plan #2 (4-25-14)	1,300.0	1,297.7	79.8	74.3	14.513	SF
SRC Kiehn 31-4CHZ - Wellbore #1 - Wellbore #1	198.5	199.0	35.1	34.4	51.323	CC
SRC Kiehn 31-4CHZ - Wellbore #1 - Wellbore #1	200.0	200.5	35.1	34.4	50.830	ES
SRC Kiehn 31-4CHZ - Wellbore #1 - Wellbore #1	1,200.0	1,199.7	43.1	38.1	8.708	SF
SRC Kiehn 31-4NHZ - Wellbore #1 - Wellbore #1	0.0	0.5	30.3	30.3	10,000.000	CC
SRC Kiehn 31-4NHZ - Wellbore #1 - Wellbore #1	100.0	100.4	30.5	30.3	133.499	ES
SRC Kiehn 31-4NHZ - Wellbore #1 - Wellbore #1	1,300.0	1,299.9	74.5	69.2	14.071	SF
SRC Kiehn 32-4CHZ - Wellbore #1 - Wellbore #1	647.9	650.2	30.1	27.2	10.551	CC, ES
SRC Kiehn 32-4CHZ - Wellbore #1 - Wellbore #1	700.0	701.3	31.0	28.0	10.202	SF
SRC Kiehn 32-4NHZ - Wellbore #1 - Wellbore #1	1,270.5	1,271.0	47.9	42.7	9.183	CC, ES
SRC Kiehn 32-4NHZ - Wellbore #1 - Wellbore #1	1,500.0	1,499.3	52.9	46.8	8.583	SF
SRC Kiehn C-4CHZ - Wellbore #1 - Wellbore #1	219.9	220.6	76.1	75.4	101.879	CC, ES
SRC Kiehn C-4CHZ - Wellbore #1 - Wellbore #1	1,700.0	1,697.6	100.0	92.9	14.133	SF
SRC Kiehn C-4NHZ - Wellbore #1 - Wellbore #1	1,449.9	1,447.9	81.7	75.8	13.902	CC
SRC Kiehn C-4NHZ - Wellbore #1 - Wellbore #1	1,500.0	1,497.1	81.9	75.8	13.439	ES
SRC Kiehn C-4NHZ - Wellbore #1 - Wellbore #1	1,800.0	1,793.6	95.4	87.8	12.668	SF
SRC Kiehn N-4NHZ - Wellbore #1 - Plan #3 (9-24-14)R	200.0	200.5	51.6	51.0	76.453	CC, ES
SRC Kiehn N-4NHZ - Wellbore #1 - Plan #3 (9-24-14)R	1,300.0	1,300.3	60.9	55.4	11.038	SF
SRC Weis 12-9CHZ - Wellbore #1 - Plan #1 (10-2-14)	200.0	200.0	67.5	66.8	100.067	CC
SRC Weis 12-9CHZ - Wellbore #1 - Plan #1 (10-2-14)	400.0	399.9	67.9	66.3	44.309	ES
SRC Weis 12-9CHZ - Wellbore #1 - Plan #1 (10-2-14)	12,075.6	12,280.8	670.0	419.3	2.672	SF
SRC Weis 12-9NHZ - Wellbore #1 - Plan #1 (10-2-14)	200.0	200.0	44.9	44.2	66.574	CC
SRC Weis 12-9NHZ - Wellbore #1 - Plan #1 (10-2-14)	700.0	699.8	46.6	43.7	16.317	ES
SRC Weis 12-9NHZ - Wellbore #1 - Plan #1 (10-2-14)	12,075.6	12,146.9	440.0	183.8	1.717	SF
SRC Weis A-9CHZ - Wellbore #1 - Plan #1 (10-2-14)	200.0	200.0	22.6	21.9	33.494	CC
SRC Weis A-9CHZ - Wellbore #1 - Plan #1 (10-2-14)	12,075.6	12,208.1	248.3	20.9	1.092	Level 2, ES, SF
SRC Weis K-9NHZ - Wellbore #1 - Plan #1 (10-2-14)	200.0	200.0	90.1	89.4	133.561	CC, ES
SRC Weis K-9NHZ - Wellbore #1 - Plan #1 (10-2-14)	12,075.6	12,226.7	879.7	624.3	3.445	SF

Offset Design SRC Kiehn Pad Sec.4-T4N-R68W - SRC Kiehn 22-4CHZ - Wellbore #1 - Plan #2 (4-25-14)													Offset Site Error: 0.0 ft	
Survey Program: 0-MWD													Offset Well Error: 0.0 ft	
Reference		Offset		Semi Major Axis			Distance						Warning	
Measured Depth (ft)	Vertical Depth (ft)	Measured Depth (ft)	Vertical Depth (ft)	Reference (ft)	Offset (ft)	Highside Toolface (°)	Offset Wellbore Centre +N/-S (ft)	+E/-W (ft)	Between Centres (ft)	Between Ellipses (ft)	Minimum Separation (ft)	Separation Factor		
0.0	0.0	0.0	0.0	0.0	0.0	-65.84	29.1	-65.0	71.2					
100.0	100.0	100.0	100.0	0.1	0.1	-65.84	29.1	-65.0	71.2	71.0	0.22	316.756	105.585 CC, ES	
200.0	200.0	200.0	200.0	0.3	0.3	-65.84	29.1	-65.0	71.2	70.5	0.67	105.585		
300.0	300.0	300.0	300.0	0.5	0.6	115.42	29.1	-65.0	71.9	70.8	1.10	65.317		
400.0	399.9	399.9	399.9	0.8	0.8	118.61	29.1	-65.0	74.0	72.5	1.53	48.302		
500.0	499.8	499.8	499.8	1.0	1.0	120.95	29.1	-65.0	75.7	73.8	1.98	38.249		
600.0	599.8	599.8	599.8	1.2	1.2	122.07	29.1	-65.0	76.7	74.2	2.43	31.577		
700.0	699.8	699.8	699.8	1.4	1.5	-57.79	29.1	-65.0	76.8	73.9	2.85	26.948		
800.0	799.8	799.8	799.8	1.6	1.7	-57.79	29.1	-65.0	76.8	73.5	3.29	23.307		
900.0	899.8	899.8	899.8	1.8	1.9	-57.79	29.1	-65.0	76.8	73.0	3.74	20.527		
1,000.0	999.8	999.8	999.8	2.1	2.1	-57.79	29.1	-65.0	76.8	72.6	4.19	18.336		
1,100.0	1,099.8	1,099.8	1,099.8	2.3	2.4	-57.79	29.1	-65.0	76.8	72.1	4.63	16.566		
1,200.0	1,199.8	1,199.8	1,199.8	2.5	2.6	-57.79	29.1	-65.0	76.8	71.7	5.08	15.106		
1,300.0	1,299.8	1,297.7	1,297.7	2.7	2.8	172.86	28.9	-66.6	79.8	74.3	5.50	14.513	SF	
1,400.0	1,399.6	1,395.1	1,394.9	2.9	3.0	171.15	28.1	-71.5	88.9	83.0	5.88	15.106		
1,500.0	1,499.2	1,491.3	1,490.8	3.1	3.2	168.96	26.8	-79.6	104.1	97.9	6.28	16.588		
1,600.0	1,598.5	1,585.8	1,584.6	3.4	3.4	166.78	25.1	-90.6	125.5	118.8	6.68	18.795		
1,700.0	1,697.3	1,678.1	1,675.9	3.6	3.6	164.85	22.9	-104.3	152.9	145.9	7.09	21.587		
1,800.0	1,795.4	1,767.8	1,764.1	3.9	3.9	163.23	20.4	-120.4	186.2	178.8	7.50	24.836		
1,900.0	1,892.9	1,855.3	1,849.6	4.3	4.2	161.87	17.5	-138.6	225.2	217.3	7.92	28.414		
2,000.0	1,989.4	1,945.6	1,937.7	4.7	4.5	160.90	14.4	-158.5	268.0	259.7	8.36	32.072		
2,100.0	2,085.1	2,034.5	2,024.3	5.2	4.9	160.30	11.3	-178.0	313.9	305.1	8.80	35.685		
2,200.0	2,179.6	2,121.8	2,109.5	5.8	5.2	159.95	8.3	-197.1	362.6	353.3	9.25	39.206		
2,300.0	2,273.0	2,207.5	2,193.0	6.4	5.6	159.75	5.3	-215.9	414.2	404.5	9.71	42.668		
2,400.0	2,365.0	2,291.4	2,274.8	7.1	5.9	159.64	2.4	-234.3	468.5	458.3	10.18	46.041		
2,500.0	2,455.7	2,373.4	2,354.8	7.9	6.3	159.58	-0.4	-252.3	525.6	514.9	10.66	49.324		
2,600.0	2,544.8	2,453.6	2,433.0	8.7	6.6	159.67	-3.2	-269.9	585.3	574.1	11.17	52.389		
2,700.0	2,633.5	2,533.2	2,510.5	9.6	7.0	160.10	-5.9	-287.4	645.7	633.9	11.77	54.841		
2,800.0	2,722.2	2,612.8	2,588.1	10.6	7.3	160.46	-8.7	-304.8	706.2	693.8	12.39	56.999		
2,900.0	2,810.9	2,692.3	2,665.7	11.5	7.7	160.76	-11.4	-322.3	766.7	753.6	13.01	58.908		
3,000.0	2,899.6	2,771.9	2,743.3	12.4	8.1	161.02	-14.2	-339.7	827.1	813.5	13.65	60.604		
3,100.0	2,988.3	2,851.5	2,820.9	13.4	8.4	161.24	-16.9	-357.2	887.6	873.3	14.29	62.120		
3,200.0	3,077.0	2,931.1	2,898.5	14.3	8.8	161.43	-19.7	-374.7	948.1	933.2	14.94	63.480		

Offset Design SRC Kiehn Pad Sec.4-T4N-R68W - SRC Kiehn 31-4CHZ - Wellbore #1 - Wellbore #1													Offset Site Error: 0.0 ft	
Survey Program: 67-MWD													Offset Well Error: 0.0 ft	
Reference		Offset		Semi Major Axis			Distance							Warning
Measured Depth	Vertical Depth	Measured Depth	Vertical Depth	Reference	Offset	Highside Toolface	Offset Wellbore Centre		Between Centres	Between Ellipses	Minimum Separation	Separation Factor		
(ft)	(ft)	(ft)	(ft)	(ft)	(ft)	(°)	+N/-S (ft)	+E/-W (ft)	(ft)	(ft)	(ft)			
0.0	0.0	0.5	0.5	0.0	0.0	-33.54	29.9	-19.8	35.8	35.8	0.00	N/A		
100.0	100.0	100.7	100.7	0.1	0.1	-35.27	28.9	-20.5	35.5	35.2	0.26	137.007		
198.5	198.5	199.0	199.0	0.3	0.4	-37.21	28.0	-21.2	35.1	34.4	0.68	51.323 CC		
200.0	200.0	200.5	200.5	0.3	0.4	-37.23	28.0	-21.3	35.1	34.4	0.69	50.830 ES		
300.0	300.0	300.4	300.4	0.5	0.6	143.32	27.8	-22.0	36.8	35.7	1.11	33.263		
400.0	399.9	400.7	400.6	0.8	0.8	145.74	27.1	-22.7	40.4	38.9	1.52	26.608		
500.0	499.8	500.7	500.7	1.0	1.0	149.29	26.6	-21.6	42.4	40.4	1.95	21.761		
600.0	599.8	600.7	600.6	1.2	1.2	153.75	27.0	-19.0	43.0	40.6	2.38	18.073		
631.0	630.8	631.6	631.5	1.3	1.3	154.90	27.1	-18.2	43.0	40.5	2.51	17.159		
700.0	699.8	699.7	699.7	1.4	1.4	-24.33	27.7	-17.8	43.3	40.5	2.79	15.532		
800.0	799.8	800.6	800.5	1.6	1.6	-26.62	28.0	-19.9	44.5	41.2	3.22	13.812		
900.0	899.8	901.3	901.1	1.8	1.8	-28.35	26.1	-20.4	43.0	39.4	3.65	11.780		
1,000.0	999.8	1,000.6	1,000.5	2.1	2.0	-28.31	24.9	-19.8	41.7	37.6	4.08	10.209		
1,029.6	1,029.4	1,030.0	1,029.9	2.1	2.1	-28.17	24.9	-19.7	41.6	37.4	4.21	9.888		
1,100.0	1,099.8	1,100.1	1,100.0	2.3	2.2	-28.54	25.0	-20.0	41.9	37.4	4.51	9.281		
1,200.0	1,199.8	1,199.7	1,199.6	2.5	2.4	-28.43	26.1	-20.5	43.1	38.1	4.95	8.708 SF		
1,300.0	1,299.8	1,299.0	1,298.8	2.7	2.7	-158.02	28.3	-21.8	47.3	41.9	5.36	8.815		
1,400.0	1,399.6	1,399.2	1,398.9	2.9	2.9	-162.17	29.5	-24.8	54.7	49.0	5.76	9.493		
1,500.0	1,499.2	1,498.5	1,498.2	3.1	3.1	-166.32	30.3	-27.9	65.6	59.4	6.16	10.645		
1,600.0	1,598.5	1,598.6	1,598.3	3.4	3.3	-169.16	30.8	-29.7	79.0	72.5	6.56	12.051		
1,700.0	1,697.3	1,695.6	1,695.3	3.6	3.5	-170.69	31.8	-30.1	95.5	88.5	6.95	13.738		
1,800.0	1,795.4	1,788.5	1,788.1	3.9	3.7	-173.13	33.6	-34.7	119.1	111.7	7.34	16.235		
1,900.0	1,892.9	1,884.9	1,884.1	4.3	3.9	-175.94	35.3	-42.8	148.5	140.8	7.73	19.225		
2,000.0	1,989.4	1,982.8	1,981.5	4.7	4.1	-179.45	31.9	-52.0	179.0	170.9	8.11	22.064		
2,100.0	2,085.1	2,076.6	2,074.3	5.2	4.4	176.89	25.1	-63.3	213.1	204.6	8.51	25.055		
2,200.0	2,179.6	2,169.8	2,166.5	5.8	4.6	174.04	17.3	-74.5	250.6	241.6	8.92	28.083		
2,300.0	2,273.0	2,258.5	2,254.2	6.4	4.8	171.93	9.5	-85.5	291.6	282.2	9.34	31.205		
2,400.0	2,365.0	2,342.7	2,337.5	7.1	5.0	170.56	3.3	-96.5	337.0	327.3	9.77	34.502		
2,500.0	2,455.7	2,425.9	2,419.9	7.9	5.3	169.81	-0.8	-107.5	386.8	376.6	10.19	37.967		
2,600.0	2,544.8	2,510.3	2,503.4	8.7	5.5	169.40	-4.2	-118.6	439.8	429.2	10.64	41.327		
2,700.0	2,633.5	2,594.8	2,587.1	9.6	5.7	169.21	-7.7	-129.7	493.6	482.4	11.19	44.109		
2,800.0	2,722.2	2,674.9	2,666.4	10.6	6.0	168.99	-11.4	-140.9	547.7	536.0	11.75	46.632		
2,900.0	2,810.9	2,761.7	2,752.3	11.5	6.2	168.86	-14.8	-152.8	602.0	589.7	12.32	48.856		
3,000.0	2,899.6	2,840.7	2,830.5	12.4	6.5	168.85	-17.1	-163.3	656.3	643.5	12.88	50.964		
3,100.0	2,988.3	2,934.3	2,923.3	13.4	6.7	168.89	-19.5	-175.4	710.6	697.2	13.47	52.767		
3,200.0	3,077.0	3,004.4	2,992.8	14.3	6.9	168.96	-20.9	-184.2	764.8	750.8	14.01	54.587		
3,300.0	3,165.7	3,084.4	3,072.0	15.3	7.2	169.04	-21.7	-195.3	820.4	805.8	14.58	56.274		
3,400.0	3,254.5	3,164.1	3,151.0	16.3	7.4	169.12	-22.4	-206.2	875.8	860.7	15.15	57.821		
3,500.0	3,343.2	3,239.1	3,225.1	17.3	7.6	169.19	-22.7	-217.1	932.1	916.4	15.71	59.329		
3,600.0	3,431.9	3,319.6	3,304.7	18.2	7.9	169.15	-24.3	-229.8	988.7	972.4	16.30	60.640		

Company:	Synergy Resources	Local Co-ordinate Reference:	Well SRC Weis A-9NHZ
Project:	SEC.4-T4N-R68W	TVD Reference:	WELL @ 5077.0ft (Original Well Elev)
Reference Site:	SRC Kiehn Pad Sec.4-T4N-R68W	MD Reference:	WELL @ 5077.0ft (Original Well Elev)
Site Error:	0.0ft	North Reference:	True
Reference Well:	SRC Weis A-9NHZ	Survey Calculation Method:	Minimum Curvature
Well Error:	0.0ft	Output errors are at	2.00 sigma
Reference Wellbore	Wellbore #1	Database:	Landmark
Reference Design:	Plan #1 (10-2-14)	Offset TVD Reference:	Offset Datum

Offset Design													Offset Site Error:	0.0 ft
Survey Program: 161-MWD													Offset Well Error:	0.0 ft
Reference		Offset		Semi Major Axis			Distance							Warning
Measured Depth (ft)	Vertical Depth (ft)	Measured Depth (ft)	Vertical Depth (ft)	Reference (ft)	Offset (ft)	Highside Toolface (°)	Offset Wellbore Centre +N/-S (ft)	+E/-W (ft)	Between Centres (ft)	Between Ellipses (ft)	Minimum Separation (ft)	Separation Factor		
0.0	0.0	0.5	0.5	0.0	0.0	4.74	30.2	2.5	30.3	30.3	0.00	N/A CC		
100.0	100.0	100.4	100.4	0.1	0.1	3.12	30.4	1.7	30.5	30.3	0.23	133.499 ES		
200.0	200.0	200.4	200.3	0.3	0.3	-1.05	31.0	-0.6	31.0	30.4	0.60	51.398		
300.0	300.0	299.9	299.9	0.5	0.5	177.66	31.8	-1.4	33.5	32.5	1.02	32.822		
400.0	399.9	398.4	398.3	0.8	0.7	178.72	35.2	-0.9	41.6	40.1	1.44	28.804		
500.0	499.8	497.0	496.7	1.0	0.9	179.01	41.3	-0.9	51.2	49.3	1.88	27.237		
600.0	599.8	595.9	595.3	1.2	1.2	178.75	48.9	-1.3	60.6	58.3	2.32	26.139		
700.0	699.8	697.1	696.2	1.4	1.4	-2.17	56.6	-2.6	68.5	65.7	2.79	24.597		
800.0	799.8	800.6	799.6	1.6	1.6	-5.50	60.0	-6.9	72.1	68.9	3.23	22.339		
900.0	899.8	901.9	900.7	1.8	1.8	-9.46	59.3	-11.8	72.0	68.4	3.65	19.711		
1,000.0	999.8	1,002.1	1,000.9	2.1	2.0	-10.06	58.3	-12.4	71.2	67.1	4.07	17.490		
1,100.0	1,099.8	1,101.6	1,100.4	2.3	2.2	-9.71	57.8	-11.9	70.6	66.1	4.49	15.722		
1,114.7	1,114.5	1,116.2	1,115.0	2.3	2.3	-9.82	57.8	-12.0	70.6	66.1	4.56	15.501		
1,200.0	1,199.8	1,200.5	1,199.3	2.5	2.4	-11.35	58.0	-14.0	71.2	66.3	4.92	14.461		
1,300.0	1,299.8	1,299.9	1,298.6	2.7	2.6	-142.73	59.4	-16.8	74.5	69.2	5.29	14.071 SF		
1,400.0	1,399.6	1,400.6	1,399.3	2.9	2.9	-145.85	60.6	-18.4	80.3	74.6	5.69	14.111		
1,500.0	1,499.2	1,499.9	1,498.5	3.1	3.1	-150.58	60.7	-21.1	88.8	82.7	6.09	14.593		
1,600.0	1,598.5	1,598.5	1,597.1	3.4	3.3	-155.29	61.3	-24.1	101.4	94.9	6.48	15.643		
1,700.0	1,697.3	1,697.5	1,696.0	3.6	3.5	-159.46	61.7	-26.8	117.6	110.7	6.88	17.103		
1,800.0	1,795.4	1,796.1	1,794.7	3.9	3.7	-162.40	62.4	-27.9	136.8	129.5	7.26	18.830		
1,900.0	1,892.9	1,895.4	1,893.9	4.3	3.9	-165.41	61.8	-29.5	158.9	151.3	7.65	20.780		
2,000.0	1,989.4	1,992.8	1,991.2	4.7	4.1	-168.44	59.0	-31.6	183.3	175.3	8.02	22.845		
2,100.0	2,085.1	2,090.5	2,088.7	5.2	4.3	-171.93	53.7	-36.3	211.4	203.0	8.40	25.159		
2,200.0	2,179.6	2,185.9	2,183.8	5.8	4.5	-175.04	46.5	-41.2	242.1	233.3	8.77	27.595		
2,300.0	2,273.0	2,278.3	2,275.7	6.4	4.7	-177.41	39.8	-45.8	276.8	267.6	9.15	30.258		
2,400.0	2,365.0	2,364.7	2,361.9	7.1	4.9	-179.17	34.1	-50.6	315.8	306.3	9.52	33.171		
2,500.0	2,455.7	2,447.1	2,443.9	7.9	5.1	179.50	29.9	-56.4	360.1	350.2	9.90	36.386		
2,600.0	2,544.8	2,528.7	2,525.1	8.7	5.3	178.39	26.4	-63.6	409.2	398.9	10.31	39.686		
2,700.0	2,633.5	2,613.0	2,609.0	9.6	5.5	177.42	22.9	-71.8	460.0	449.2	10.83	42.486		
2,800.0	2,722.2	2,698.6	2,694.0	10.6	5.7	176.58	18.9	-80.3	510.9	499.5	11.36	44.987		
2,900.0	2,810.9	2,782.3	2,777.1	11.5	5.9	175.85	15.0	-89.3	562.2	550.4	11.89	47.273		
3,000.0	2,899.6	2,875.7	2,869.9	12.4	6.1	175.10	9.7	-99.2	613.0	600.6	12.46	49.186		
3,100.0	2,988.3	2,963.5	2,957.1	13.4	6.4	174.51	4.4	-107.9	663.3	650.3	13.03	50.925		
3,200.0	3,077.0	3,050.4	3,043.5	14.3	6.6	174.04	-0.8	-116.2	713.4	699.8	13.59	52.487		
3,300.0	3,165.7	3,132.8	3,125.4	15.3	6.8	173.73	-4.8	-123.8	763.8	749.7	14.16	53.959		
3,400.0	3,254.5	3,211.0	3,203.2	16.3	7.0	173.49	-8.2	-131.2	814.6	799.9	14.72	55.357		
3,500.0	3,343.2	3,292.0	3,283.7	17.3	7.2	173.25	-11.5	-139.4	866.1	850.8	15.29	56.641		
3,600.0	3,431.9	3,388.9	3,379.9	18.2	7.5	172.94	-16.1	-149.8	917.7	901.8	15.91	57.677		
3,700.0	3,520.6	3,469.5	3,459.9	19.2	7.7	172.63	-21.2	-158.8	968.8	952.3	16.51	58.694		

Offset Design SRC Kiehn Pad Sec.4-T4N-R68W - SRC Kiehn 32-4CHZ - Wellbore #1 - Wellbore #1													Offset Site Error: 0.0 ft	
Survey Program: 72-MWD													Offset Well Error: 0.0 ft	
Reference		Offset		Semi Major Axis			Distance							
Measured Depth	Vertical Depth	Measured Depth	Vertical Depth	Reference	Offset	Highside Toolface	Offset Wellbore Centre		Between Centres	Between Ellipses	Minimum Separation	Separation Factor	Warning	
(ft)	(ft)	(ft)	(ft)	(ft)	(ft)	(°)	+N/-S (ft)	+E/-W (ft)	(ft)	(ft)	(ft)			
0.0	0.0	0.5	0.5	0.0	0.0	39.36	30.6	25.1	39.6	39.6	0.00	N/A		
100.0	100.0	100.7	100.7	0.1	0.1	38.64	30.9	24.7	39.6	39.4	0.26	154.295		
200.0	200.0	201.5	201.5	0.3	0.4	35.85	30.9	22.3	38.1	37.4	0.71	53.921		
300.0	300.0	302.3	302.1	0.5	0.6	-150.99	29.7	17.5	36.0	34.9	1.14	31.546		
400.0	399.9	402.8	402.3	0.8	0.9	-163.57	27.1	9.9	34.9	33.4	1.60	21.889		
500.0	499.8	502.9	501.9	1.0	1.1	-178.67	23.2	0.8	33.0	30.9	2.09	15.802		
600.0	599.8	602.8	601.2	1.2	1.4	163.84	18.0	-8.6	30.8	28.2	2.61	11.790		
647.9	647.7	650.2	648.3	1.3	1.6	153.57	15.1	-13.4	30.1	27.2	2.85	10.551 CC, ES		
700.0	699.8	701.3	699.0	1.4	1.7	-38.27	12.5	-19.2	31.0	28.0	3.04	10.202 SF		
800.0	799.8	799.0	795.9	1.6	2.0	-54.62	10.7	-31.6	39.0	35.5	3.58	10.903		
900.0	899.8	897.9	894.0	1.8	2.3	-60.00	13.6	-44.0	51.2	47.1	4.09	12.531		
1,000.0	999.8	998.7	994.1	2.1	2.5	-63.16	16.3	-55.5	62.5	57.9	4.58	13.632		
1,100.0	1,099.8	1,099.9	1,094.6	2.3	2.8	-69.57	13.1	-66.7	71.4	66.3	5.09	14.028		
1,200.0	1,199.8	1,200.9	1,194.8	2.5	3.1	-76.40	6.7	-76.4	78.8	73.2	5.58	14.117		
1,300.0	1,299.8	1,301.9	1,295.1	2.7	3.4	147.97	-2.7	-84.6	86.7	81.1	5.62	15.437		
1,400.0	1,399.6	1,403.6	1,396.2	2.9	3.6	144.03	-11.3	-90.6	96.2	90.2	6.01	16.004		
1,500.0	1,499.2	1,505.0	1,497.3	3.1	3.8	142.45	-19.0	-93.6	105.9	99.4	6.41	16.502		
1,600.0	1,598.5	1,603.5	1,595.6	3.4	4.1	142.99	-24.9	-96.4	118.2	111.4	6.84	17.282		
1,700.0	1,697.3	1,702.5	1,694.4	3.6	4.3	144.05	-31.3	-99.4	133.6	126.3	7.29	18.340		
1,800.0	1,795.4	1,799.0	1,790.6	3.9	4.5	145.82	-36.8	-102.3	151.9	144.2	7.74	19.632		
1,900.0	1,892.9	1,897.8	1,889.2	4.3	4.7	147.59	-43.0	-106.6	174.5	166.3	8.21	21.252		
2,000.0	1,989.4	1,995.9	1,987.0	4.7	5.0	149.13	-50.4	-109.2	198.2	189.5	8.69	22.815		
2,100.0	2,085.1	2,091.3	2,082.1	5.2	5.2	150.84	-56.9	-111.8	225.3	216.1	9.16	24.596		
2,200.0	2,179.6	2,185.2	2,175.7	5.8	5.4	152.55	-62.9	-114.6	255.8	246.2	9.64	26.550		
2,300.0	2,273.0	2,277.8	2,268.1	6.4	5.6	154.11	-68.9	-117.8	290.0	279.9	10.12	28.671		
2,400.0	2,365.0	2,367.1	2,357.2	7.1	5.8	155.58	-74.0	-121.2	327.9	317.3	10.58	30.977		
2,500.0	2,455.7	2,459.1	2,449.0	7.9	6.0	157.04	-78.6	-125.0	369.4	358.4	11.05	33.418		
2,600.0	2,544.8	2,549.2	2,538.8	8.7	6.3	158.16	-84.8	-128.6	413.4	401.9	11.56	35.752		
2,700.0	2,633.5	2,633.1	2,622.4	9.6	6.5	159.21	-90.9	-132.5	458.8	446.6	12.15	37.748		
2,800.0	2,722.2	2,716.6	2,705.6	10.6	6.7	160.12	-96.2	-137.3	505.4	492.7	12.74	39.659		
2,900.0	2,810.9	2,809.6	2,798.3	11.5	6.9	160.99	-101.8	-142.7	552.4	539.1	13.35	41.383		
3,000.0	2,899.6	2,904.0	2,892.3	12.4	7.2	161.66	-108.7	-147.0	598.0	584.0	13.96	42.837		
3,100.0	2,988.3	2,991.0	2,979.0	13.4	7.4	162.24	-114.6	-150.8	643.6	629.0	14.56	44.207		
3,200.0	3,077.0	3,076.0	3,063.8	14.3	7.6	162.74	-120.2	-154.8	689.6	674.4	15.16	45.484		
3,300.0	3,165.7	3,167.3	3,154.8	15.3	7.8	163.25	-125.6	-159.2	736.0	720.2	15.77	46.681		
3,400.0	3,254.5	3,258.5	3,245.9	16.3	8.0	163.81	-130.1	-162.3	781.6	765.3	16.35	47.806		
3,500.0	3,343.2	3,345.4	3,332.6	17.3	8.2	164.37	-133.3	-165.1	827.6	810.7	16.91	48.933		
3,600.0	3,431.9	3,450.7	3,437.9	18.2	8.4	165.05	-136.4	-167.3	873.1	855.7	17.48	49.941		
3,700.0	3,520.6	3,543.4	3,530.5	19.2	8.6	165.69	-138.6	-167.1	917.0	899.0	18.02	50.898		
3,800.0	3,609.3	3,625.8	3,612.9	20.2	8.8	166.31	-138.9	-166.6	961.5	943.0	18.53	51.899		

Company:	Synergy Resources	Local Co-ordinate Reference:	Well SRC Weis A-9NHZ
Project:	SEC.4-T4N-R68W	TVD Reference:	WELL @ 5077.0ft (Original Well Elev)
Reference Site:	SRC Kiehn Pad Sec.4-T4N-R68W	MD Reference:	WELL @ 5077.0ft (Original Well Elev)
Site Error:	0.0ft	North Reference:	True
Reference Well:	SRC Weis A-9NHZ	Survey Calculation Method:	Minimum Curvature
Well Error:	0.0ft	Output errors are at	2.00 sigma
Reference Wellbore	Wellbore #1	Database:	Landmark
Reference Design:	Plan #1 (10-2-14)	Offset TVD Reference:	Offset Datum

Offset Design												Offset Site Error:	0.0 ft
Survey Program: 110-MWD												Offset Well Error:	0.0 ft
Reference		Offset		Semi Major Axis			Distance						Warning
Measured Depth (ft)	Vertical Depth (ft)	Measured Depth (ft)	Vertical Depth (ft)	Reference (ft)	Offset (ft)	Highside Toolface (°)	Offset Wellbore Centre +N/-S (ft)	+E/-W (ft)	Between Centres (ft)	Between Ellipses (ft)	Minimum Separation (ft)	Separation Factor	
0.0	0.0	0.5	0.5	0.0	0.0	57.00	31.0	47.7	56.8	56.8	0.00	N/A	
100.0	100.0	101.5	101.5	0.1	0.1	56.81	30.6	46.8	56.0	55.7	0.23	245.165	
200.0	200.0	201.7	201.6	0.3	0.3	56.23	29.9	44.7	53.8	53.2	0.67	80.908	
285.6	285.6	287.0	287.0	0.5	0.5	-125.65	29.6	43.0	53.0	52.0	1.01	52.562	
300.0	300.0	301.5	301.4	0.5	0.5	-126.18	29.5	42.8	53.0	51.9	1.07	49.721	
400.0	399.9	401.3	401.2	0.8	0.7	-130.47	28.8	41.1	54.1	52.6	1.48	36.649	
500.0	499.8	501.2	501.1	1.0	0.9	-132.85	27.6	40.4	55.1	53.2	1.91	28.870	
600.0	599.8	601.7	601.6	1.2	1.2	-134.25	26.4	39.0	54.4	52.1	2.34	23.206	
700.0	699.8	701.8	701.7	1.4	1.4	44.77	25.1	36.6	51.9	49.2	2.77	18.754	
797.4	797.2	797.9	797.7	1.6	1.6	45.61	23.4	35.9	50.2	47.1	3.18	15.782	
800.0	799.8	800.4	800.2	1.6	1.6	45.61	23.4	35.9	50.2	47.1	3.19	15.728	
900.0	899.8	900.1	900.0	1.8	1.8	44.48	24.6	35.7	51.0	47.4	3.62	14.088	
1,000.0	999.8	1,000.2	1,000.0	2.1	2.0	42.66	26.2	34.9	51.6	47.5	4.05	12.738	
1,100.0	1,099.8	1,100.9	1,100.7	2.3	2.2	40.91	27.2	33.7	51.5	47.0	4.49	11.484	
1,200.0	1,199.8	1,202.3	1,202.0	2.5	2.4	40.74	25.4	32.0	49.1	44.2	4.93	9.966	
1,270.5	1,270.2	1,271.0	1,270.7	2.7	2.6	-88.19	24.1	31.8	47.9	42.7	5.21	9.183 CC, ES	
1,300.0	1,299.8	1,300.0	1,299.8	2.7	2.6	-88.97	24.1	32.1	48.1	42.7	5.33	9.010	
1,400.0	1,399.6	1,399.7	1,399.4	2.9	2.8	-95.51	25.3	32.5	49.5	43.8	5.74	8.626	
1,500.0	1,499.2	1,499.3	1,498.9	3.1	3.1	-107.62	27.9	31.1	52.9	46.8	6.17	8.583 SF	
1,600.0	1,598.5	1,599.2	1,598.9	3.4	3.3	-119.59	28.7	30.7	58.6	52.0	6.59	8.881	
1,700.0	1,697.3	1,697.7	1,697.3	3.6	3.5	-129.87	28.8	32.0	67.8	60.8	7.01	9.671	
1,800.0	1,795.4	1,795.4	1,795.1	3.9	3.7	-139.51	30.0	32.3	82.6	75.2	7.42	11.131	
1,900.0	1,892.9	1,892.5	1,892.2	4.3	3.9	-146.88	31.0	33.2	101.6	93.7	7.81	12.996	
2,000.0	1,989.4	1,989.2	1,988.8	4.7	4.1	-152.80	32.5	33.4	125.5	117.3	8.20	15.299	
2,100.0	2,085.1	2,087.1	2,086.8	5.2	4.3	-157.92	32.4	32.8	152.4	143.9	8.58	17.769	
2,200.0	2,179.6	2,182.0	2,181.6	5.8	4.5	-161.46	31.6	33.6	182.1	173.1	8.95	20.338	
2,300.0	2,273.0	2,279.3	2,279.0	6.4	4.7	-164.92	29.5	32.8	215.4	206.1	9.32	23.110	
2,400.0	2,365.0	2,370.1	2,369.6	7.1	4.9	-167.55	26.3	32.4	251.1	241.4	9.68	25.943	
2,500.0	2,455.7	2,460.6	2,460.1	7.9	5.1	-169.80	23.5	30.9	291.6	281.5	10.04	29.042	
2,600.0	2,544.8	2,551.4	2,550.9	8.7	5.3	-171.59	20.6	29.9	335.0	324.6	10.43	32.115	
2,700.0	2,633.5	2,640.5	2,639.8	9.6	5.4	-173.27	16.8	28.0	379.4	368.5	10.91	34.777	
2,800.0	2,722.2	2,728.1	2,727.4	10.6	5.6	-174.58	13.1	26.2	424.1	412.7	11.40	37.205	
2,900.0	2,810.9	2,824.6	2,823.7	11.5	5.8	-175.94	7.9	23.2	468.9	457.0	11.92	39.354	
3,000.0	2,899.6	2,932.7	2,931.4	12.4	6.1	-177.24	-0.5	21.9	511.2	498.7	12.46	41.032	
3,100.0	2,988.3	3,025.1	3,023.6	13.4	6.3	-177.88	-7.1	24.1	551.5	538.5	12.98	42.484	
3,200.0	3,077.0	3,109.2	3,107.5	14.3	6.5	-178.23	-11.7	26.5	592.5	579.0	13.50	43.878	
3,300.0	3,165.7	3,185.0	3,183.2	15.3	6.6	-178.50	-14.9	27.7	635.1	621.1	14.02	45.312	
3,400.0	3,254.5	3,264.0	3,262.2	16.3	6.8	-178.72	-16.7	27.9	679.8	665.2	14.54	46.751	
3,500.0	3,343.2	3,366.0	3,364.1	17.3	7.0	-179.05	-19.7	27.2	724.8	709.7	15.11	47.977	
3,600.0	3,431.9	3,454.7	3,452.7	18.2	7.2	-179.39	-24.2	27.2	768.1	752.4	15.65	49.077	
3,700.0	3,520.6	3,558.9	3,556.8	19.2	7.4	-179.80	-29.9	26.7	811.6	795.3	16.23	49.997	
3,800.0	3,609.3	3,646.7	3,644.3	20.2	7.6	179.85	-35.9	26.8	853.8	837.0	16.79	50.862	
3,900.0	3,698.0	3,742.2	3,739.7	21.2	7.8	179.49	-42.5	26.8	896.2	878.8	17.36	51.617	
4,000.0	3,786.7	3,844.4	3,841.6	22.2	8.1	179.21	-49.4	28.1	937.7	919.7	17.95	52.247	
4,100.0	3,875.4	3,941.3	3,938.2	23.2	8.3	179.07	-55.4	31.1	978.2	959.7	18.52	52.819	

Company:	Synergy Resources	Local Co-ordinate Reference:	Well SRC Weis A-9NHZ
Project:	SEC.4-T4N-R68W	TVD Reference:	WELL @ 5077.0ft (Original Well Elev)
Reference Site:	SRC Kiehn Pad Sec.4-T4N-R68W	MD Reference:	WELL @ 5077.0ft (Original Well Elev)
Site Error:	0.0ft	North Reference:	True
Reference Well:	SRC Weis A-9NHZ	Survey Calculation Method:	Minimum Curvature
Well Error:	0.0ft	Output errors are at	2.00 sigma
Reference Wellbore	Wellbore #1	Database:	Landmark
Reference Design:	Plan #1 (10-2-14)	Offset TVD Reference:	Offset Datum

Offset Design													Offset Site Error:	0.0 ft
Survey Program: 103-MWD													Offset Well Error:	0.0 ft
Reference		Offset		Semi Major Axis			Distance							Warning
Measured Depth (ft)	Vertical Depth (ft)	Measured Depth (ft)	Vertical Depth (ft)	Reference (ft)	Offset (ft)	Highside Toolface (°)	Offset Wellbore Centre +N/-S (ft)	+E/-W (ft)	Between Centres (ft)	Between Ellipses (ft)	Minimum Separation (ft)	Separation Factor		
0.0	0.0	0.5	0.5	0.0	0.0	65.97	31.3	70.3	76.9					
100.0	100.0	100.9	100.9	0.1	0.1	65.82	31.4	69.9	76.6	76.4	0.23	339.198		
200.0	200.0	200.8	200.8	0.3	0.3	65.35	31.8	69.2	76.1	75.5	0.66	114.736		
219.9	219.9	220.6	220.6	0.4	0.4	-114.95	32.0	69.0	76.1	75.4	0.75	101.879 CC, ES		
300.0	300.0	300.3	300.3	0.5	0.5	-117.68	34.0	68.0	76.8	75.7	1.08	70.823		
400.0	399.9	399.6	399.5	0.8	0.8	-122.88	37.1	67.0	79.8	78.3	1.51	52.745		
500.0	499.8	499.5	499.3	1.0	1.0	-128.02	41.4	65.5	83.1	81.2	1.96	42.367		
600.0	599.8	599.5	599.2	1.2	1.2	-132.60	46.3	62.9	85.5	83.1	2.41	35.392		
700.0	699.8	699.6	699.2	1.4	1.4	44.07	50.7	60.5	87.0	84.2	2.83	30.709		
800.0	799.8	800.5	800.0	1.6	1.6	43.18	52.3	60.1	87.9	84.6	3.25	27.051		
900.0	899.8	901.2	900.7	1.8	1.8	43.74	51.6	60.7	87.8	84.1	3.67	23.935		
1,000.0	999.8	1,002.3	1,001.8	2.1	2.0	43.58	51.0	59.8	86.7	82.6	4.10	21.148		
1,100.0	1,099.8	1,101.3	1,100.7	2.3	2.3	42.68	51.1	58.0	85.5	81.0	4.53	18.868		
1,200.0	1,199.8	1,201.5	1,201.0	2.5	2.5	42.30	50.9	57.0	84.8	79.8	4.96	17.099		
1,241.4	1,241.2	1,242.1	1,241.6	2.6	2.5	-86.52	50.7	57.0	84.6	79.5	5.13	16.485		
1,300.0	1,299.8	1,299.7	1,299.2	2.7	2.7	-87.44	51.0	57.3	84.9	79.6	5.37	15.811		
1,400.0	1,399.6	1,398.5	1,397.9	2.9	2.9	-91.12	52.9	58.3	87.0	81.2	5.78	15.047		
1,500.0	1,499.2	1,498.5	1,497.9	3.1	3.1	-96.95	54.9	59.2	89.8	83.6	6.20	14.478		
1,600.0	1,598.5	1,598.1	1,597.5	3.4	3.3	-103.90	56.5	60.9	94.2	87.6	6.63	14.210		
1,700.0	1,697.3	1,697.6	1,697.0	3.6	3.5	-113.00	57.5	60.3	100.0	92.9	7.08	14.133 SF		
1,800.0	1,795.4	1,796.4	1,795.7	3.9	3.7	-122.55	58.5	59.4	109.9	102.4	7.52	14.616		
1,900.0	1,892.9	1,893.9	1,893.2	4.3	3.9	-131.86	58.3	57.7	123.5	115.6	7.95	15.538		
2,000.0	1,989.4	1,989.8	1,989.1	4.7	4.1	-140.07	58.5	55.5	143.0	134.7	8.36	17.119		
2,100.0	2,085.1	2,087.4	2,086.7	5.2	4.3	-146.61	58.4	54.6	167.0	158.3	8.75	19.094		
2,200.0	2,179.6	2,182.6	2,182.0	5.8	4.5	-151.62	57.4	54.8	194.3	185.2	9.13	21.294		
2,300.0	2,273.0	2,274.2	2,273.5	6.4	4.7	-155.60	56.8	54.8	226.3	216.8	9.51	23.811		
2,400.0	2,365.0	2,366.1	2,365.4	7.1	4.9	-158.96	56.6	54.1	262.9	253.1	9.88	26.619		
2,500.0	2,455.7	2,454.1	2,453.4	7.9	5.1	-161.73	56.0	52.8	303.4	293.2	10.24	29.631		
2,600.0	2,544.8	2,542.9	2,542.2	8.7	5.3	-164.02	56.3	51.5	348.1	337.5	10.63	32.756		
2,700.0	2,633.5	2,633.3	2,632.6	9.6	5.4	-166.00	56.3	50.7	393.6	382.5	11.10	35.472		
2,800.0	2,722.2	2,728.3	2,727.6	10.6	5.6	-167.56	56.1	50.7	438.6	427.0	11.58	37.879		
2,900.0	2,810.9	2,821.2	2,820.5	11.5	5.8	-168.88	54.4	51.2	482.5	470.4	12.07	39.976		
3,000.0	2,899.6	2,916.1	2,915.3	12.4	6.0	-169.88	52.9	52.7	526.0	513.5	12.58	41.826		
3,100.0	2,988.3	3,009.2	3,008.4	13.4	6.2	-170.73	50.6	54.7	568.7	555.6	13.09	43.454		
3,200.0	3,077.0	3,113.5	3,112.5	14.3	6.4	-171.59	46.9	57.4	610.5	596.9	13.62	44.834		
3,300.0	3,165.7	3,220.6	3,219.4	15.3	6.6	-172.43	40.4	61.4	650.0	635.8	14.15	45.920		
3,400.0	3,254.5	3,317.5	3,315.9	16.3	6.8	-172.94	34.4	67.5	687.8	673.1	14.69	46.806		
3,500.0	3,343.2	3,398.8	3,396.9	17.3	7.0	-173.23	30.8	72.9	726.6	711.4	15.22	47.734		
3,600.0	3,431.9	3,524.9	3,522.4	18.2	7.3	-173.54	24.1	83.8	763.4	747.6	15.83	48.223		
3,700.0	3,520.6	3,628.5	3,625.1	19.2	7.5	-173.64	17.8	96.0	797.7	781.3	16.41	48.607		
3,800.0	3,609.3	3,719.2	3,715.0	20.2	7.7	-173.73	12.0	106.8	831.8	814.8	16.97	49.002		
3,900.0	3,698.0	3,802.3	3,797.4	21.2	7.9	-173.82	7.1	116.0	866.6	849.1	17.52	49.457		
4,000.0	3,786.7	3,896.0	3,890.4	22.2	8.1	-173.91	2.2	125.8	902.4	884.3	18.10	49.867		
4,100.0	3,875.4	3,994.1	3,987.8	23.2	8.4	-174.09	-4.4	135.5	937.6	918.9	18.67	50.214		
4,200.0	3,964.1	4,107.9	4,100.7	24.1	8.6	-174.46	-15.0	145.7	971.8	952.5	19.27	50.440		

Company:	Synergy Resources	Local Co-ordinate Reference:	Well SRC Weis A-9NHZ
Project:	SEC.4-T4N-R68W	TVD Reference:	WELL @ 5077.0ft (Original Well Elev)
Reference Site:	SRC Kiehn Pad Sec.4-T4N-R68W	MD Reference:	WELL @ 5077.0ft (Original Well Elev)
Site Error:	0.0ft	North Reference:	True
Reference Well:	SRC Weis A-9NHZ	Survey Calculation Method:	Minimum Curvature
Well Error:	0.0ft	Output errors are at	2.00 sigma
Reference Wellbore	Wellbore #1	Database:	Landmark
Reference Design:	Plan #1 (10-2-14)	Offset TVD Reference:	Offset Datum

Offset Design													Offset Site Error:	0.0 ft
Survey Program: 169-MWD													Offset Well Error:	0.0 ft
Reference		Offset		Semi Major Axis			Distance							Warning
Measured Depth (ft)	Vertical Depth (ft)	Measured Depth (ft)	Vertical Depth (ft)	Reference (ft)	Offset (ft)	Highside Toolface (°)	Offset Wellbore Centre +N/-S (ft)	+E/-W (ft)	Between Centres (ft)	Between Ellipses (ft)	Minimum Separation (ft)	Separation Factor		
0.0	0.0	0.5	0.5	0.0	0.0	70.62	31.7	90.0	95.5					
100.0	100.0	102.3	102.3	0.1	0.1	70.40	31.7	89.0	94.5	94.3	0.23	410.768		
200.0	200.0	203.1	203.1	0.3	0.3	69.81	31.7	86.2	91.9	91.3	0.60	152.458		
300.0	300.0	302.5	302.4	0.5	0.5	-111.39	31.1	83.9	90.1	89.1	1.00	89.640		
354.5	354.4	356.7	356.6	0.7	0.6	-112.55	30.6	82.9	89.7	88.5	1.23	73.147		
400.0	399.9	401.4	401.3	0.8	0.7	-113.95	30.2	82.3	90.1	88.6	1.42	63.606		
500.0	499.8	501.0	500.9	1.0	0.9	-115.48	29.3	82.2	91.0	89.2	1.85	49.208		
600.0	599.8	602.3	602.2	1.2	1.1	-116.17	28.3	81.2	90.5	88.2	2.28	39.625		
700.0	699.8	701.4	701.2	1.4	1.3	64.12	26.9	79.7	88.6	85.9	2.70	32.782		
740.5	740.3	741.0	740.8	1.5	1.4	64.97	25.6	80.1	88.4	85.5	2.88	30.733		
800.0	799.8	798.8	798.6	1.6	1.5	65.71	24.8	81.0	88.9	85.8	3.13	28.447		
900.0	899.8	903.6	903.4	1.8	1.7	65.81	24.7	81.3	89.1	85.6	3.57	24.996		
1,000.0	999.8	1,002.8	1,002.5	2.1	1.9	66.13	22.8	78.2	85.5	81.5	4.00	21.383		
1,100.0	1,099.8	1,100.9	1,100.6	2.3	2.1	66.01	22.4	76.8	84.0	79.6	4.43	18.980		
1,200.0	1,199.8	1,201.9	1,201.6	2.5	2.4	65.43	22.8	75.7	83.2	78.3	4.86	17.120		
1,300.0	1,299.8	1,299.7	1,299.4	2.7	2.6	-64.51	22.9	75.3	82.2	76.9	5.26	15.623		
1,400.0	1,399.6	1,398.5	1,398.2	2.9	2.8	-68.15	24.1	76.6	81.8	76.1	5.67	14.431		
1,449.9	1,449.4	1,447.9	1,447.6	3.0	2.9	-70.88	25.0	77.6	81.7	75.8	5.88	13.902 CC		
1,500.0	1,499.2	1,497.1	1,496.7	3.1	3.0	-73.96	25.8	78.9	81.9	75.8	6.09	13.439 ES		
1,600.0	1,598.5	1,594.5	1,594.1	3.4	3.2	-81.09	28.0	83.5	84.3	77.8	6.54	12.899		
1,700.0	1,697.3	1,693.5	1,692.8	3.6	3.4	-89.76	30.7	89.1	89.0	82.0	7.02	12.680		
1,800.0	1,795.4	1,793.6	1,792.7	3.9	3.6	-98.65	32.1	95.7	95.4	87.8	7.53	12.668 SF		
1,900.0	1,892.9	1,894.1	1,892.9	4.3	3.8	-107.33	30.6	102.7	102.3	94.2	8.06	12.687		
2,000.0	1,989.4	1,992.4	1,990.8	4.7	4.0	-115.23	27.8	111.1	111.6	103.0	8.61	12.973		
2,100.0	2,085.1	2,092.8	2,090.6	5.2	4.3	-122.63	24.3	121.0	124.3	115.1	9.15	13.578		
2,200.0	2,179.6	2,197.5	2,194.5	5.8	4.5	-129.75	16.5	132.0	137.0	127.3	9.68	14.151		
2,300.0	2,273.0	2,296.8	2,292.5	6.4	4.8	-135.95	5.5	143.5	150.1	139.9	10.18	14.749		
2,400.0	2,365.0	2,392.4	2,386.8	7.1	5.1	-141.24	-4.7	155.5	167.6	156.9	10.64	15.744		
2,500.0	2,455.7	2,488.1	2,481.3	7.9	5.3	-145.93	-14.0	167.8	189.9	178.8	11.08	17.133		
2,600.0	2,544.8	2,580.6	2,572.4	8.7	5.6	-149.38	-21.6	181.5	216.8	205.3	11.57	18.744		
2,700.0	2,633.5	2,670.1	2,660.6	9.6	5.9	-151.83	-26.8	195.8	246.9	234.8	12.13	20.355		
2,800.0	2,722.2	2,764.2	2,753.6	10.6	6.1	-154.02	-31.4	209.6	278.7	266.0	12.68	21.968		
2,900.0	2,810.9	2,858.1	2,846.3	11.5	6.4	-155.78	-36.0	223.3	310.7	297.5	13.25	23.453		
3,000.0	2,899.6	2,949.0	2,936.2	12.4	6.7	-157.01	-39.6	237.1	343.5	329.7	13.85	24.808		
3,100.0	2,988.3	3,037.1	3,023.3	13.4	7.0	-158.05	-42.3	249.6	377.7	363.2	14.44	26.161		
3,200.0	3,077.0	3,136.2	3,121.5	14.3	7.2	-159.29	-46.0	262.2	412.1	397.1	15.00	27.465		
3,300.0	3,165.7	3,232.1	3,216.5	15.3	7.5	-160.28	-50.3	274.9	445.8	430.2	15.58	28.603		
3,400.0	3,254.5	3,335.4	3,318.6	16.3	7.9	-161.20	-56.0	289.1	478.5	462.3	16.18	29.568		
3,500.0	3,343.2	3,441.7	3,423.4	17.3	8.2	-161.98	-63.8	305.5	509.0	492.2	16.80	30.292		
3,600.0	3,431.9	3,542.5	3,522.3	18.2	8.6	-162.44	-71.4	323.3	538.0	520.6	17.46	30.817		
3,700.0	3,520.6	3,636.0	3,613.8	19.2	9.0	-162.68	-78.1	341.0	566.7	548.6	18.14	31.249		
3,800.0	3,609.3	3,724.1	3,700.1	20.2	9.3	-162.76	-83.0	358.3	596.4	577.6	18.82	31.682		
3,900.0	3,698.0	3,805.6	3,780.1	21.2	9.6	-162.91	-86.9	372.9	627.6	608.1	19.47	32.230		
4,000.0	3,786.7	3,881.6	3,855.3	22.2	9.8	-163.18	-89.8	384.1	661.3	641.2	20.08	32.940		
4,100.0	3,875.4	3,956.7	3,929.7	23.2	10.0	-163.42	-90.9	394.0	697.7	677.0	20.68	33.743		
4,200.0	3,964.1	4,040.1	4,012.7	24.1	10.2	-163.73	-91.1	403.2	736.1	714.8	21.27	34.603		
4,300.0	4,052.8	4,157.6	4,129.4	25.1	10.6	-164.30	-94.0	415.4	773.3	751.4	21.88	35.342		
4,400.0	4,141.5	4,258.5	4,229.5	26.1	10.9	-164.73	-98.5	427.5	808.2	785.7	22.48	35.953		
4,500.0	4,230.2	4,343.8	4,314.1	27.1	11.1	-165.03	-101.8	437.8	843.4	820.4	23.07	36.562		
4,600.0	4,318.9	4,423.9	4,393.6	28.1	11.4	-165.27	-103.9	447.2	879.9	856.2	23.65	37.199		
4,700.0	4,407.6	4,511.8	4,481.0	29.1	11.6	-165.55	-105.6	456.3	917.7	893.4	24.24	37.853		
4,800.0	4,496.3	4,610.5	4,579.1	30.1	11.9	-165.82	-107.6	467.1	955.0	930.1	24.86	38.421		

CC - Min centre to center distance or convergent point, SF - min separation factor, ES - min ellipse separation

Company:	Synergy Resources	Local Co-ordinate Reference:	Well SRC Weis A-9NHZ
Project:	SEC.4-T4N-R68W	TVD Reference:	WELL @ 5077.0ft (Original Well Elev)
Reference Site:	SRC Kiehn Pad Sec.4-T4N-R68W	MD Reference:	WELL @ 5077.0ft (Original Well Elev)
Site Error:	0.0ft	North Reference:	True
Reference Well:	SRC Weis A-9NHZ	Survey Calculation Method:	Minimum Curvature
Well Error:	0.0ft	Output errors are at	2.00 sigma
Reference Wellbore	Wellbore #1	Database:	Landmark
Reference Design:	Plan #1 (10-2-14)	Offset TVD Reference:	Offset Datum

Offset Design SRC Kiehn Pad Sec.4-T4N-R68W - SRC Kiehn C-4NHZ - Wellbore #1 - Wellbore #1												Offset Site Error:	0.0 ft
Survey Program: 169-MWD												Offset Well Error:	0.0 ft
Reference	Offset	Semi Major Axis		Distance									
Measured Depth (ft)	Vertical Depth (ft)	Measured Depth (ft)	Vertical Depth (ft)	Reference (ft)	Offset (ft)	Highside Toolface (°)	Offset Wellbore Centre +N/-S (ft)	+E/-W (ft)	Between Centres (ft)	Between Ellipses (ft)	Minimum Separation (ft)	Separation Factor	Warning
4,900.0	4,585.0	4,711.8	4,679.9	31.1	12.2	-166.13	-110.6	477.8	991.8	966.4	25.46	38.963	

SRC Kiehn Pad Sec.4-T4N-R68W - SRC Kiehn N-4NHZ - Wellbore #1 - Plan #3 (9-24-14)R													Offset Site Error:	0.0 ft
Survey Program: 0-MWD													Offset Well Error:	0.0 ft
Reference		Offset		Semi Major Axis			Distance							
Measured Depth	Vertical Depth	Measured Depth	Vertical Depth	Reference	Offset	Highside Toolface	Offset Wellbore Centre		Between Centres	Between Ellipses	Minimum Separation	Separation Factor	Warning	
(ft)	(ft)	(ft)	(ft)	(ft)	(ft)	(°)	+N/-S (ft)	+E/-W (ft)	(ft)	(ft)	(ft)			
0.0	0.0	0.5	0.5	0.0	0.0	-55.15	29.5	-42.4	51.6	51.6	0.00	N/A		
100.0	100.0	100.5	100.5	0.1	0.1	-55.15	29.5	-42.4	51.6	51.4	0.23	228.597		
200.0	200.0	200.5	200.5	0.3	0.3	-55.15	29.5	-42.4	51.6	51.0	0.68	76.453 CC, ES		
300.0	300.0	300.5	300.5	0.5	0.6	126.39	29.5	-42.4	52.7	51.6	1.10	47.709		
400.0	399.9	400.4	400.4	0.8	0.8	130.19	29.5	-42.4	55.5	54.0	1.53	36.182		
500.0	499.8	500.3	500.3	1.0	1.0	132.85	29.5	-42.4	57.8	55.8	1.98	29.199		
600.0	599.8	600.3	600.3	1.2	1.2	134.10	29.5	-42.4	59.0	56.6	2.43	24.320		
700.0	699.8	700.3	700.3	1.4	1.5	-45.75	29.5	-42.4	59.2	56.3	2.85	20.759		
800.0	799.8	800.3	800.3	1.6	1.7	-45.75	29.5	-42.4	59.2	55.9	3.30	17.955		
900.0	899.8	900.3	900.3	1.8	1.9	-45.75	29.5	-42.4	59.2	55.4	3.74	15.814		
1,000.0	999.8	1,000.3	1,000.3	2.1	2.1	-45.75	29.5	-42.4	59.2	55.0	4.19	14.126		
1,100.0	1,099.8	1,100.3	1,100.3	2.3	2.4	-45.75	29.5	-42.4	59.2	54.5	4.64	12.763		
1,200.0	1,199.8	1,200.3	1,200.3	2.5	2.6	-45.75	29.5	-42.4	59.2	54.1	5.08	11.639		
1,300.0	1,299.8	1,300.3	1,300.3	2.7	2.8	-174.59	29.5	-42.4	60.9	55.4	5.52	11.038 SF		
1,400.0	1,399.6	1,400.0	1,400.0	2.9	3.0	-175.01	29.5	-42.4	66.1	60.2	5.93	11.147		
1,500.0	1,499.2	1,498.2	1,498.2	3.1	3.2	-176.61	29.2	-44.0	75.8	69.5	6.32	11.985		
1,600.0	1,598.5	1,595.2	1,595.0	3.4	3.4	-179.58	28.2	-48.9	91.1	84.4	6.71	13.586		
1,700.0	1,697.3	1,690.5	1,690.0	3.6	3.6	177.09	26.6	-56.8	112.3	105.2	7.09	15.828		
1,800.0	1,795.4	1,783.7	1,782.5	3.9	3.8	174.00	24.5	-67.5	139.3	131.8	7.48	18.614		
1,900.0	1,892.9	1,874.2	1,872.1	4.3	4.1	171.33	21.9	-80.8	172.2	164.3	7.88	21.842		
2,000.0	1,989.4	1,963.8	1,960.2	4.7	4.3	169.11	18.8	-96.4	210.6	202.3	8.30	25.383		
2,100.0	2,085.1	2,054.4	2,049.3	5.2	4.6	167.54	15.6	-112.6	252.6	243.9	8.71	28.997		
2,200.0	2,179.6	2,143.5	2,136.9	5.8	4.9	166.49	12.4	-128.6	297.8	288.7	9.13	32.615		
2,300.0	2,273.0	2,231.1	2,223.0	6.4	5.2	165.78	9.3	-144.3	346.0	336.5	9.57	36.164		
2,400.0	2,365.0	2,317.0	2,307.5	7.1	5.5	165.29	6.2	-159.7	397.2	387.2	10.01	39.699		
2,500.0	2,455.7	2,401.1	2,390.2	7.9	5.7	164.95	3.2	-174.7	451.2	440.8	10.45	43.176		
2,600.0	2,544.8	2,483.5	2,471.1	8.7	6.0	164.79	0.3	-189.5	508.0	497.1	10.93	46.465		
2,700.0	2,633.5	2,565.2	2,551.5	9.6	6.3	164.90	-2.6	-204.1	565.5	554.0	11.51	49.148		
2,800.0	2,722.2	2,647.0	2,631.9	10.6	6.6	165.00	-5.5	-218.8	623.1	611.0	12.09	51.523		
2,900.0	2,810.9	2,728.8	2,712.4	11.5	6.9	165.08	-8.4	-233.4	680.6	667.9	12.69	53.634		
3,000.0	2,899.6	2,810.6	2,792.8	12.4	7.3	165.15	-11.3	-248.1	738.1	724.8	13.30	55.516		
3,100.0	2,988.3	2,892.4	2,873.2	13.4	7.6	165.20	-14.3	-262.7	795.7	781.8	13.91	57.202		
3,200.0	3,077.0	2,974.2	2,953.6	14.3	7.9	165.25	-17.2	-277.4	853.2	838.7	14.53	58.717		
3,300.0	3,165.7	3,056.0	3,034.0	15.3	8.2	165.30	-20.1	-292.0	910.8	895.6	15.16	60.084		
3,400.0	3,254.5	3,137.7	3,114.4	16.3	8.5	165.34	-23.0	-306.7	968.3	952.5	15.79	61.323		

SRC Kiehn Pad Sec.4-T4N-R68W - SRC Weis 12-9CHZ - Wellbore #1 - Plan #1 (10-2-14)													Offset Site Error:	0.0 ft
Survey Program: 0-MWD													Offset Well Error:	0.0 ft
Reference		Offset		Semi Major Axis			Distance							
Measured Depth	Vertical Depth	Measured Depth	Vertical Depth	Reference	Offset	Highside Toolface	Offset Wellbore Centre		Between Centres	Between Ellipses	Minimum Separation	Separation Factor	Warning	
(ft)	(ft)	(ft)	(ft)	(ft)	(ft)	(°)	+N/-S (ft)	+E/-W (ft)	(ft)	(ft)	(ft)			
0.0	0.0	0.0	0.0	0.0	0.0	89.07	1.1	67.5	67.5					
100.0	100.0	100.0	100.0	0.1	0.1	89.07	1.1	67.5	67.5	67.3	0.22	300.202		
200.0	200.0	200.0	200.0	0.3	0.3	89.07	1.1	67.5	67.5	66.8	0.67	100.067 CC		
300.0	300.0	300.0	300.0	0.5	0.6	-92.41	1.1	67.5	67.5	66.4	1.10	61.398		
400.0	399.9	399.9	399.9	0.8	0.8	-96.27	1.1	67.5	67.9	66.3	1.53	44.309 ES		
500.0	499.8	498.6	498.6	1.0	1.0	-97.94	-0.2	68.5	69.2	67.3	1.96	35.378		
600.0	599.8	597.2	597.0	1.2	1.2	-95.89	-4.1	71.8	72.2	69.9	2.37	30.418		
700.0	699.8	695.3	694.8	1.4	1.4	89.14	-10.6	77.2	77.3	74.6	2.78	27.787		
800.0	799.8	792.7	791.5	1.6	1.7	95.29	-19.6	84.6	85.4	82.1	3.22	26.511		
900.0	899.8	889.3	886.9	1.8	2.0	101.56	-31.0	94.0	96.9	93.2	3.67	26.389		
1,000.0	999.8	984.7	980.6	2.1	2.3	107.35	-44.7	105.4	112.1	107.9	4.14	27.070		
1,100.0	1,099.8	1,078.8	1,072.5	2.3	2.7	112.38	-60.6	118.5	131.0	126.4	4.64	28.262		
1,200.0	1,199.8	1,171.5	1,162.2	2.5	3.1	116.57	-78.4	133.3	153.7	148.5	5.17	29.743		
1,300.0	1,299.8	1,262.9	1,249.9	2.7	3.6	-8.68	-98.3	149.7	178.3	172.7	5.60	31.812		
1,400.0	1,399.6	1,353.7	1,336.2	2.9	4.2	-5.94	-120.1	167.8	202.9	196.9	6.05	33.539		
1,500.0	1,499.2	1,443.7	1,420.8	3.1	4.8	-3.67	-143.8	187.4	227.5	221.0	6.50	34.976		
1,600.0	1,598.5	1,533.0	1,503.7	3.4	5.4	-1.74	-169.3	208.5	251.9	245.0	6.96	36.196		
1,700.0	1,697.3	1,621.7	1,585.0	3.6	6.1	-0.05	-196.6	231.1	276.2	268.8	7.43	37.174		
1,800.0	1,795.4	1,709.7	1,664.5	3.9	6.8	1.46	-225.5	255.1	300.3	292.4	7.91	37.974		
1,900.0	1,892.9	1,804.5	1,749.4	4.3	7.7	2.91	-258.2	282.1	323.2	314.8	8.42	38.409		
2,000.0	1,989.4	1,902.2	1,836.7	4.7	8.6	4.23	-291.9	310.0	343.0	334.1	8.94	38.381		
2,100.0	2,085.1	2,000.6	1,924.6	5.2	9.5	5.45	-325.8	338.1	359.6	350.1	9.47	37.955		
2,200.0	2,179.6	2,099.4	2,013.0	5.8	10.4	6.63	-359.9	366.3	372.9	362.9	10.03	37.190		
2,300.0	2,273.0	2,198.6	2,101.7	6.4	11.3	7.80	-394.2	394.6	382.9	372.3	10.60	36.133		
2,400.0	2,365.0	2,298.0	2,190.6	7.1	12.3	8.99	-428.5	423.0	389.6	378.4	11.19	34.821		
2,500.0	2,455.7	2,397.6	2,279.6	7.9	13.2	10.23	-462.8	451.4	393.1	381.3	11.81	33.282		
2,600.0	2,544.8	2,497.1	2,368.6	8.7	14.1	11.56	-497.2	479.9	393.5	381.0	12.49	31.492		
2,700.0	2,633.5	2,596.7	2,457.6	9.6	15.1	12.92	-531.5	508.3	393.1	379.8	13.28	29.588		
2,800.0	2,722.2	2,696.2	2,546.7	10.6	16.0	14.28	-565.9	536.7	392.9	378.8	14.12	27.819		
2,826.7	2,745.9	2,722.8	2,570.4	10.8	16.2	14.65	-575.0	544.3	392.9	378.5	14.36	27.366		
2,900.0	2,810.9	2,795.8	2,635.7	11.5	16.9	15.65	-600.2	565.2	392.9	377.9	15.01	26.172		
3,000.0	2,899.6	2,895.4	2,724.7	12.4	17.9	17.01	-634.6	593.6	393.2	377.3	15.96	24.638		
3,100.0	2,988.3	2,994.9	2,813.7	13.4	18.8	18.37	-668.9	622.0	393.7	376.7	16.96	23.208		
3,200.0	3,077.0	3,094.5	2,902.7	14.3	19.8	19.72	-703.3	650.5	394.4	376.4	18.03	21.876		
3,300.0	3,165.7	3,194.0	2,991.7	15.3	20.7	21.07	-737.6	678.9	395.4	376.2	19.16	20.637		
3,400.0	3,254.5	3,293.6	3,080.8	16.3	21.6	22.41	-772.0	707.3	396.5	376.2	20.35	19.485		
3,500.0	3,343.2	3,393.2	3,169.8	17.3	22.6	23.74	-806.3	735.8	397.9	376.3	21.61	18.416		
3,600.0	3,431.9	3,492.7	3,258.8	18.2	23.5	25.07	-840.7	764.2	399.5	376.6	22.93	17.426		
3,700.0	3,520.6	3,592.3	3,347.8	19.2	24.5	26.38	-875.0	792.6	401.3	377.0	24.31	16.509		
3,800.0	3,609.3	3,691.8	3,436.8	20.2	25.4	27.68	-909.3	821.1	403.4	377.6	25.76	15.661		
3,900.0	3,698.0	3,791.4	3,525.8	21.2	26.3	28.96	-943.7	849.5	405.6	378.3	27.26	14.878		
4,000.0	3,786.7	3,891.0	3,614.8	22.2	27.3	30.23	-978.0	877.9	408.0	379.2	28.82	14.156		
4,100.0	3,875.4	3,990.5	3,703.9	23.2	28.2	31.49	-1,012.4	906.3	410.6	380.2	30.44	13.490		
4,200.0	3,964.1	4,090.1	3,792.9	24.1	29.2	32.73	-1,046.7	934.8	413.5	381.4	32.11	12.875		
4,300.0	4,052.8	4,189.6	3,881.9	25.1	30.1	33.95	-1,081.1	963.2	416.5	382.7	33.84	12.309		
4,400.0	4,141.5	4,289.2	3,970.9	26.1	31.1	35.16	-1,115.4	991.6	419.7	384.1	35.60	11.787		
4,500.0	4,230.2	4,388.7	4,059.9	27.1	32.0	36.34	-1,149.8	1,020.1	423.1	385.7	37.42	11.306		
4,600.0	4,318.9	4,488.3	4,148.9	28.1	33.0	37.51	-1,184.1	1,048.5	426.7	387.4	39.28	10.863		
4,700.0	4,407.6	4,587.9	4,238.0	29.1	33.9	38.66	-1,218.5	1,076.9	430.4	389.2	41.17	10.454		
4,800.0	4,496.3	4,687.4	4,327.0	30.1	34.8	39.78	-1,252.8	1,105.4	434.3	391.2	43.10	10.076		
4,900.0	4,585.0	4,787.0	4,416.0	31.1	35.8	40.89	-1,287.2	1,133.8	438.4	393.3	45.07	9.727		
5,000.0	4,673.8	4,886.5	4,505.0	32.1	36.7	41.97	-1,321.5	1,162.2	442.6	395.6	47.07	9.405		

COMPASS 2003.21 Build 46

Company:	Synergy Resources	Local Co-ordinate Reference:	Well SRC Weis A-9NHZ
Project:	SEC.4-T4N-R68W	TVD Reference:	WELL @ 5077.0ft (Original Well Elev)
Reference Site:	SRC Kiehn Pad Sec.4-T4N-R68W	MD Reference:	WELL @ 5077.0ft (Original Well Elev)
Site Error:	0.0ft	North Reference:	True
Reference Well:	SRC Weis A-9NHZ	Survey Calculation Method:	Minimum Curvature
Well Error:	0.0ft	Output errors are at	2.00 sigma
Reference Wellbore	Wellbore #1	Database:	Landmark
Reference Design:	Plan #1 (10-2-14)	Offset TVD Reference:	Offset Datum

Offset Design												Offset Site Error:	0.0 ft
Survey Program: 0-MWD												Offset Well Error:	0.0 ft
Reference		Offset		Semi Major Axis			Distance						
Measured Depth (ft)	Vertical Depth (ft)	Measured Depth (ft)	Vertical Depth (ft)	Reference (ft)	Offset (ft)	Highside Toolface (°)	Offset Wellbore Centre +N/-S (ft)	+E/-W (ft)	Between Centres (ft)	Between Ellipses (ft)	Minimum Separation (ft)	Separation Factor	Warning
5,100.0	4,762.5	4,986.1	4,594.0	33.1	37.7	43.04	-1,355.9	1,190.7	447.0	397.9	49.09	9.106	
5,200.0	4,851.2	5,085.7	4,683.0	34.1	38.6	44.08	-1,390.2	1,219.1	451.6	400.4	51.14	8.830	
5,300.0	4,939.9	5,185.2	4,772.1	35.1	39.6	45.10	-1,424.6	1,247.5	456.3	403.1	53.22	8.574	
5,400.0	5,028.6	5,284.8	4,861.1	36.1	40.5	46.11	-1,458.9	1,276.0	461.1	405.8	55.31	8.337	
5,500.0	5,117.3	5,384.3	4,950.1	37.1	41.5	47.09	-1,493.3	1,304.4	466.1	408.7	57.42	8.117	
5,600.0	5,206.0	5,483.9	5,039.1	38.1	42.4	48.05	-1,527.6	1,332.8	471.2	411.7	59.56	7.912	
5,700.0	5,294.7	5,583.5	5,128.1	39.1	43.4	48.99	-1,562.0	1,361.2	476.5	414.8	61.70	7.722	
5,800.0	5,383.4	5,683.0	5,217.1	40.1	44.3	49.90	-1,596.3	1,389.7	481.8	418.0	63.86	7.545	
5,900.0	5,472.1	5,782.6	5,306.1	41.1	45.2	50.80	-1,630.7	1,418.1	487.3	421.3	66.03	7.380	
6,000.0	5,560.8	5,882.1	5,395.2	42.1	46.2	51.68	-1,665.0	1,446.5	492.9	424.7	68.21	7.226	
6,100.0	5,649.5	5,981.7	5,484.2	43.1	47.1	52.54	-1,699.4	1,475.0	498.7	428.3	70.40	7.083	
6,200.0	5,738.2	6,081.3	5,573.2	44.1	48.1	53.38	-1,733.7	1,503.4	504.5	431.9	72.60	6.949	
6,300.0	5,826.9	6,180.8	5,662.2	45.1	49.0	54.20	-1,768.1	1,531.8	510.4	435.6	74.81	6.823	
6,400.0	5,915.6	6,280.4	5,751.2	46.1	50.0	55.00	-1,802.4	1,560.3	516.5	439.5	77.02	6.706	
6,500.0	6,004.3	6,379.9	5,840.2	47.1	50.9	55.78	-1,836.8	1,588.7	522.6	443.4	79.23	6.596	
6,600.0	6,093.1	6,479.5	5,929.3	48.1	51.9	56.54	-1,871.1	1,617.1	528.8	447.4	81.45	6.493	
6,700.0	6,182.7	6,579.2	6,018.4	48.9	52.8	57.31	-1,905.5	1,645.6	534.6	451.1	83.51	6.402	
6,800.0	6,275.7	6,678.6	6,107.3	49.5	53.8	58.12	-1,939.8	1,674.0	538.2	454.2	85.96	6.310	
6,900.0	6,370.3	6,776.0	6,194.3	49.9	54.7	58.91	-1,973.4	1,701.8	540.0	457.3	88.71	6.229	
7,000.0	6,464.9	6,869.3	6,277.8	50.1	55.6	59.67	-2,007.6	1,728.4	541.7	461.5	91.86	6.156	
7,100.0	6,557.5	6,957.6	6,357.3	50.2	56.3	60.40	-2,036.3	1,751.4	545.8	468.7	95.09	6.091	
7,200.0	6,646.4	7,049.7	6,442.2	50.2	56.9	61.10	-2,069.3	1,764.8	553.6	479.5	98.41	6.027	
7,300.0	6,729.8	7,148.5	6,534.1	50.1	57.3	61.77	-2,105.1	1,766.0	565.3	493.8	101.89	5.964	
7,400.0	6,806.2	7,255.6	6,632.9	49.9	57.6	62.41	-2,143.9	1,751.9	580.3	510.9	105.53	5.902	
7,500.0	6,873.9	7,373.3	6,737.7	49.7	57.8	63.02	-2,185.2	1,718.4	597.9	530.0	109.66	5.841	
7,600.0	6,931.7	7,503.9	6,846.2	49.5	57.8	63.59	-2,228.4	1,660.3	616.8	549.8	114.44	5.781	
7,700.0	6,978.5	7,650.0	6,953.5	49.3	57.7	64.13	-2,271.5	1,571.4	635.4	568.3	119.89	5.722	
7,800.0	7,013.3	7,813.0	7,050.5	49.2	57.4	64.64	-2,311.1	1,447.0	651.8	583.4	126.11	5.664	
7,900.0	7,035.6	7,992.2	7,123.8	49.0	57.0	65.12	-2,341.9	1,287.0	663.7	592.5	133.21	5.607	
8,000.0	7,044.7	8,182.7	7,158.6	49.0	56.5	65.57	-2,358.0	1,101.0	669.4	594.0	140.41	5.551	
8,100.0	7,045.0	8,305.2	7,160.0	49.0	56.2	66.00	-2,360.2	978.5	669.7	592.3	147.71	5.495	
8,200.0	7,045.0	8,405.2	7,160.0	49.1	56.0	66.40	-2,361.6	878.5	669.7	590.7	155.11	5.440	
8,300.0	7,045.0	8,505.2	7,160.0	49.3	55.8	66.77	-2,363.0	778.5	669.7	588.8	162.61	5.385	
8,400.0	7,045.0	8,605.2	7,160.0	49.6	55.7	67.11	-2,364.4	678.5	669.7	586.6	170.21	5.330	
8,500.0	7,045.0	8,705.2	7,160.0	50.1	55.6	67.42	-2,365.7	578.5	669.7	584.0	177.91	5.275	
8,600.0	7,045.0	8,805.2	7,160.0	50.8	55.6	67.70	-2,367.1	478.5	669.7	581.2	185.71	5.220	
8,700.0	7,045.0	8,905.2	7,160.0	51.6	55.7	67.95	-2,368.5	378.5	669.7	578.2	193.61	5.165	
8,800.0	7,045.0	9,005.2	7,160.0	52.7	55.9	68.17	-2,369.8	278.5	669.7	574.9	201.71	5.110	
8,900.0	7,045.0	9,105.2	7,160.0	53.9	56.2	68.37	-2,371.2	178.6	669.7	571.4	209.91	5.055	
9,000.0	7,045.0	9,205.2	7,160.0	55.2	56.7	68.54	-2,372.6	78.6	669.7	567.8	218.31	5.000	
9,100.0	7,045.0	9,305.2	7,160.0	56.8	57.4	68.68	-2,373.9	-21.4	669.7	564.0	226.91	4.945	
9,200.0	7,045.0	9,405.2	7,160.0	58.5	58.3	68.79	-2,375.3	-121.4	669.8	560.0	235.71	4.890	
9,300.0	7,045.0	9,505.2	7,160.0	60.3	59.6	68.88	-2,376.7	-221.4	669.8	555.9	244.71	4.835	
9,400.0	7,045.0	9,605.2	7,160.0	62.2	61.1	68.95	-2,378.1	-321.4	669.8	551.7	253.91	4.780	
9,500.0	7,045.0	9,705.2	7,160.0	64.3	62.9	69.00	-2,379.4	-421.4	669.8	547.4	263.31	4.725	
9,600.0	7,045.0	9,805.2	7,160.0	66.4	64.8	69.03	-2,380.8	-521.4	669.8	543.0	272.91	4.670	
9,700.0	7,045.0	9,905.2	7,160.0	68.6	66.8	69.04	-2,382.2	-621.4	669.8	538.5	282.71	4.615	
9,800.0	7,045.0	10,005.2	7,160.0	70.8	69.0	69.04	-2,383.5	-721.4	669.8	533.9	292.71	4.560	
9,900.0	7,045.0	10,105.2	7,160.0	73.1	71.3	69.03	-2,384.9	-821.4	669.8	529.3	302.91	4.505	
10,000.0	7,045.0	10,205.2	7,160.0	75.4	73.6	69.00	-2,386.3	-921.3	669.8	524.6	313.31	4.450	
10,100.0	7,045.0	10,305.2	7,160.0	77.8	76.0	68.95	-2,387.6	-1,021.3	669.8	519.8	323.91	4.395	
10,200.0	7,045.0	10,405.2	7,160.0	80.2	78.4	68.88	-2,389.0	-1,121.3	669.8	515.0	334.71	4.340	

CC - Min centre to center distance or convergent point, SF - min separation factor, ES - min ellipse separation

Company:	Synergy Resources	Local Co-ordinate Reference:	Well SRC Weis A-9NHZ
Project:	SEC.4-T4N-R68W	TVD Reference:	WELL @ 5077.0ft (Original Well Elev)
Reference Site:	SRC Kiehn Pad Sec.4-T4N-R68W	MD Reference:	WELL @ 5077.0ft (Original Well Elev)
Site Error:	0.0ft	North Reference:	True
Reference Well:	SRC Weis A-9NHZ	Survey Calculation Method:	Minimum Curvature
Well Error:	0.0ft	Output errors are at	2.00 sigma
Reference Wellbore	Wellbore #1	Database:	Landmark
Reference Design:	Plan #1 (10-2-14)	Offset TVD Reference:	Offset Datum

Offset Design SRC Kiehn Pad Sec.4-T4N-R68W - SRC Weis 12-9CHZ - Wellbore #1 - Plan #1 (10-2-14)												Offset Site Error:	0.0 ft
Survey Program: 0-MWD												Offset Well Error:	0.0 ft
Reference		Offset		Semi Major Axis			Distance						
Measured Depth (ft)	Vertical Depth (ft)	Measured Depth (ft)	Vertical Depth (ft)	Reference (ft)	Offset (ft)	Highside Toolface (°)	Offset Wellbore Centre +N/-S (ft)	+E/-W (ft)	Between Centres (ft)	Between Ellipses (ft)	Minimum Separation (ft)	Separation Factor	Warning
10,300.0	7,045.0	10,505.2	7,160.0	82.7	80.8	-99.89	-2,390.4	-1,221.3	669.8	510.1	159.72	4.194	
10,400.0	7,045.0	10,605.2	7,160.0	85.1	83.3	-99.89	-2,391.8	-1,321.3	669.9	505.2	164.63	4.069	
10,500.0	7,045.0	10,705.2	7,160.0	87.6	85.8	-99.89	-2,393.1	-1,421.3	669.9	500.3	169.57	3.950	
10,600.0	7,045.0	10,805.2	7,160.0	90.1	88.3	-99.89	-2,394.5	-1,521.3	669.9	495.3	174.55	3.838	
10,700.0	7,045.0	10,905.2	7,160.0	92.7	90.9	-99.89	-2,395.9	-1,621.3	669.9	490.3	179.56	3.731	
10,800.0	7,045.0	11,005.2	7,160.0	95.2	93.5	-99.88	-2,397.2	-1,721.3	669.9	485.3	184.60	3.629	
10,900.0	7,045.0	11,105.2	7,160.0	97.8	96.0	-99.88	-2,398.6	-1,821.3	669.9	480.2	189.67	3.532	
11,000.0	7,045.0	11,205.2	7,160.0	100.4	98.6	-99.88	-2,400.0	-1,921.3	669.9	475.1	194.77	3.440	
11,100.0	7,045.0	11,305.2	7,160.0	103.0	101.2	-99.88	-2,401.3	-2,021.2	669.9	470.0	199.89	3.351	
11,200.0	7,045.0	11,405.2	7,160.0	105.6	103.8	-99.88	-2,402.7	-2,121.2	669.9	464.9	205.03	3.268	
11,300.0	7,045.0	11,505.2	7,160.0	108.2	106.5	-99.88	-2,404.1	-2,221.2	669.9	459.7	210.18	3.187	
11,400.0	7,045.0	11,605.2	7,160.0	110.8	109.1	-99.88	-2,405.5	-2,321.2	669.9	454.6	215.36	3.111	
11,500.0	7,045.0	11,705.2	7,160.0	113.4	111.7	-99.88	-2,406.8	-2,421.2	669.9	449.4	220.56	3.038	
11,600.0	7,045.0	11,805.2	7,160.0	116.1	114.4	-99.88	-2,408.2	-2,521.2	670.0	444.2	225.77	2.967	
11,700.0	7,045.0	11,905.2	7,160.0	118.7	117.1	-99.88	-2,409.6	-2,621.2	670.0	439.0	230.99	2.900	
11,800.0	7,045.0	12,005.2	7,160.0	121.4	119.7	-99.88	-2,410.9	-2,721.2	670.0	433.7	236.23	2.836	
11,900.0	7,045.0	12,105.2	7,160.0	124.0	122.4	-99.88	-2,412.3	-2,821.2	670.0	428.5	241.49	2.774	
12,000.0	7,045.0	12,205.2	7,160.0	126.7	125.1	-99.88	-2,413.7	-2,921.2	670.0	423.2	246.75	2.715	
12,075.6	7,045.0	12,280.8	7,160.0	128.7	127.1	-99.88	-2,414.7	-2,996.7	670.0	419.3	250.74	2.672 SF	

SRC Kiehn Pad Sec.4-T4N-R68W - SRC Weis 12-9NHZ - Wellbore #1 - Plan #1 (10-2-14)													Offset Site Error: 0.0 ft	
Survey Program: 0-MWD													Offset Well Error: 0.0 ft	
Reference		Offset		Semi Major Axis			Distance							
Measured Depth (ft)	Vertical Depth (ft)	Measured Depth (ft)	Vertical Depth (ft)	Reference (ft)	Offset (ft)	Highside Toolface (°)	Offset Wellbore Centre +N/-S (ft)	+E/-W (ft)	Between Centres (ft)	Between Ellipses (ft)	Minimum Separation (ft)	Separation Factor	Warning	
0.0	0.0	0.0	0.0	0.0	0.0	89.07	0.7	44.9	44.9					
100.0	100.0	100.0	100.0	0.1	0.1	89.07	0.7	44.9	44.9	44.7	0.22	199.721		
200.0	200.0	200.0	200.0	0.3	0.3	89.07	0.7	44.9	44.9	44.2	0.67	66.574	CC	
200.0	200.0	200.0	200.0	0.3	0.3	89.07	0.7	44.9	44.9	44.2	0.67	66.570		
300.0	300.0	300.0	300.0	0.5	0.6	-93.15	0.7	44.9	45.0	43.9	1.10	40.873		
400.0	399.9	399.9	399.9	0.8	0.8	-98.92	0.7	44.9	45.4	43.9	1.53	29.661		
500.0	499.8	499.8	499.8	1.0	1.0	-103.21	0.7	44.9	46.1	44.1	1.98	23.263		
600.0	599.8	599.8	599.8	1.2	1.2	-105.31	0.7	44.9	46.5	44.1	2.43	19.151		
700.0	699.8	699.8	699.8	1.4	1.5	74.43	0.7	44.9	46.6	43.7	2.86	16.317	ES	
800.0	799.8	799.0	799.0	1.6	1.7	76.26	-0.5	46.1	47.4	44.1	3.27	14.479		
900.0	899.8	898.0	897.8	1.8	1.8	81.38	-4.3	49.6	50.2	46.5	3.68	13.621		
1,000.0	999.8	996.5	996.0	2.1	2.1	88.64	-10.5	55.4	55.5	51.4	4.10	13.532		
1,100.0	1,099.8	1,094.3	1,093.1	2.3	2.3	96.54	-19.0	63.4	64.2	59.6	4.53	14.161		
1,200.0	1,199.8	1,191.2	1,188.8	2.5	2.6	103.86	-29.9	73.6	76.6	71.6	4.98	15.395		
1,300.0	1,299.8	1,287.3	1,283.2	2.7	2.9	-18.92	-43.1	85.9	91.3	85.9	5.42	16.835		
1,400.0	1,399.6	1,382.8	1,376.4	2.9	3.2	-14.47	-58.4	100.2	106.4	100.5	5.84	18.206		
1,500.0	1,499.2	1,477.9	1,468.3	3.1	3.7	-10.96	-75.9	116.6	121.7	115.4	6.27	19.402		
1,600.0	1,598.5	1,572.4	1,559.0	3.4	4.1	-8.08	-95.5	135.0	137.0	130.3	6.71	20.437		
1,700.0	1,697.3	1,666.4	1,648.2	3.6	4.7	-5.64	-117.1	155.2	152.4	145.3	7.15	21.322		
1,800.0	1,795.4	1,759.9	1,735.9	3.9	5.3	-3.52	-140.8	177.4	167.8	160.2	7.59	22.095		
1,900.0	1,892.9	1,853.0	1,822.1	4.3	5.9	-1.65	-166.4	201.3	183.0	175.0	8.05	22.728		
2,000.0	1,989.4	1,945.5	1,906.7	4.7	6.7	0.05	-193.8	227.0	198.2	189.7	8.52	23.254		
2,100.0	2,085.1	2,037.6	1,989.6	5.2	7.4	1.60	-223.1	254.5	213.3	204.3	9.01	23.678		
2,200.0	2,179.6	2,134.3	2,075.5	5.8	8.3	3.10	-255.4	284.7	227.4	217.9	9.52	23.886		
2,300.0	2,273.0	2,233.5	2,163.6	6.4	9.2	4.51	-288.7	315.8	238.5	228.4	10.06	23.705		
2,400.0	2,365.0	2,333.0	2,252.0	7.1	10.2	5.89	-322.0	347.1	246.2	235.6	10.62	23.177		
2,500.0	2,455.7	2,432.7	2,340.6	7.9	11.1	7.28	-355.5	378.4	250.6	239.4	11.21	22.348		
2,600.0	2,544.8	2,532.5	2,429.2	8.7	12.0	8.74	-388.9	409.7	251.8	239.9	11.86	21.222		
2,700.0	2,633.5	2,632.3	2,517.9	9.6	13.0	10.23	-422.4	441.0	252.2	239.5	12.63	19.967		
2,800.0	2,722.2	2,732.1	2,606.5	10.6	14.0	11.72	-455.8	472.3	252.7	239.3	13.44	18.799		
2,900.0	2,810.9	2,831.9	2,695.2	11.5	14.9	13.19	-489.2	503.6	253.5	239.1	14.31	17.711		
3,000.0	2,899.6	2,931.6	2,783.8	12.4	15.9	14.66	-522.7	534.9	254.4	239.1	15.24	16.695		
3,100.0	2,988.3	3,031.4	2,872.5	13.4	16.8	16.12	-556.1	566.2	255.4	239.2	16.22	15.746		
3,200.0	3,077.0	3,131.2	2,961.1	14.3	17.8	17.56	-589.6	597.6	256.7	239.4	17.27	14.860		
3,300.0	3,165.7	3,231.0	3,049.7	15.3	18.8	18.99	-623.0	628.9	258.1	239.7	18.39	14.035		
3,400.0	3,254.5	3,330.8	3,138.4	16.3	19.8	20.41	-656.5	660.2	259.6	240.0	19.57	13.267		
3,500.0	3,343.2	3,430.6	3,227.0	17.3	20.7	21.80	-689.9	691.5	261.3	240.5	20.81	12.555		
3,600.0	3,431.9	3,530.3	3,315.7	18.2	21.7	23.18	-723.4	722.8	263.2	241.1	22.13	11.894		
3,700.0	3,520.6	3,630.1	3,404.3	19.2	22.7	24.54	-756.8	754.1	265.2	241.7	23.50	11.283		
3,800.0	3,609.3	3,729.9	3,493.0	20.2	23.6	25.87	-790.3	785.4	267.4	242.4	24.94	10.718		
3,900.0	3,698.0	3,829.7	3,581.6	21.2	24.6	27.18	-823.7	816.7	269.7	243.2	26.44	10.198		
4,000.0	3,786.7	3,929.5	3,670.2	22.2	25.6	28.47	-857.2	848.1	272.1	244.1	28.00	9.718		
4,100.0	3,875.4	4,029.3	3,758.9	23.2	26.6	29.74	-890.6	879.4	274.7	245.1	29.61	9.276		
4,200.0	3,964.1	4,129.0	3,847.5	24.1	27.5	30.98	-924.0	910.7	277.4	246.1	31.28	8.869		
4,300.0	4,052.8	4,228.8	3,936.2	25.1	28.5	32.20	-957.5	942.0	280.2	247.3	32.99	8.495		
4,400.0	4,141.5	4,328.6	4,024.8	26.1	29.5	33.40	-990.9	973.3	283.2	248.5	34.75	8.151		
4,500.0	4,230.2	4,428.4	4,113.5	27.1	30.5	34.56	-1,024.4	1,004.6	286.3	249.7	36.55	7.834		
4,600.0	4,318.9	4,528.2	4,202.1	28.1	31.4	35.71	-1,057.8	1,035.9	289.5	251.1	38.39	7.542		
4,700.0	4,407.6	4,628.0	4,290.7	29.1	32.4	36.83	-1,091.3	1,067.3	292.8	252.5	40.26	7.273		
4,800.0	4,496.3	4,727.7	4,379.4	30.1	33.4	37.92	-1,124.7	1,098.6	296.2	254.1	42.17	7.025		
4,900.0	4,585.0	4,827.5	4,468.0	31.1	34.4	38.99	-1,158.2	1,129.9	299.8	255.7	44.11	6.796		
5,000.0	4,673.8	4,927.3	4,556.7	32.1	35.4	40.03	-1,191.6	1,161.2	303.4	257.3	46.08	6.584		

Company:	Synergy Resources	Local Co-ordinate Reference:	Well SRC Weis A-9NHZ
Project:	SEC.4-T4N-R68W	TVD Reference:	WELL @ 5077.0ft (Original Well Elev)
Reference Site:	SRC Kiehn Pad Sec.4-T4N-R68W	MD Reference:	WELL @ 5077.0ft (Original Well Elev)
Site Error:	0.0ft	North Reference:	True
Reference Well:	SRC Weis A-9NHZ	Survey Calculation Method:	Minimum Curvature
Well Error:	0.0ft	Output errors are at	2.00 sigma
Reference Wellbore	Wellbore #1	Database:	Landmark
Reference Design:	Plan #1 (10-2-14)	Offset TVD Reference:	Offset Datum

Offset Design													Offset Site Error:	0.0 ft
Survey Program: 0-MWDD													Offset Well Error:	0.0 ft
Reference		Offset		Semi Major Axis			Distance							Warning
Measured Depth (ft)	Vertical Depth (ft)	Measured Depth (ft)	Vertical Depth (ft)	Reference (ft)	Offset (ft)	Highside Toolface (°)	Offset Wellbore Centre +N/-S (ft)	+E/-W (ft)	Between Centres (ft)	Between Ellipses (ft)	Minimum Separation (ft)	Separation Factor		
5,100.0	4,762.5	5,027.1	4,645.3	33.1	36.3	41.04	-1,225.1	1,192.5	307.1	259.1	48.07	6.389		
5,200.0	4,851.2	5,126.9	4,733.9	34.1	37.3	42.04	-1,258.5	1,223.8	311.0	260.9	50.09	6.208		
5,300.0	4,939.9	5,226.7	4,822.6	35.1	38.3	43.00	-1,292.0	1,255.1	314.9	262.7	52.13	6.040		
5,400.0	5,028.6	5,326.4	4,911.2	36.1	39.3	43.95	-1,325.4	1,286.5	318.9	264.7	54.19	5.885		
5,500.0	5,117.3	5,426.2	4,999.9	37.1	40.3	44.87	-1,358.8	1,317.8	323.0	266.7	56.26	5.740		
5,600.0	5,206.0	5,526.0	5,088.5	38.1	41.2	45.77	-1,392.3	1,349.1	327.1	268.8	58.35	5.606		
5,700.0	5,294.7	5,625.8	5,177.2	39.1	42.2	46.64	-1,425.7	1,380.4	331.4	270.9	60.46	5.481		
5,800.0	5,383.4	5,725.6	5,265.8	40.1	43.2	47.49	-1,459.2	1,411.7	335.7	273.1	62.57	5.365		
5,900.0	5,472.1	5,825.3	5,354.4	41.1	44.2	48.32	-1,492.6	1,443.0	340.1	275.4	64.70	5.257		
6,000.0	5,560.8	5,925.1	5,443.1	42.1	45.1	49.13	-1,526.1	1,474.3	344.6	277.7	66.83	5.156		
6,100.0	5,649.5	6,024.9	5,531.7	43.1	46.1	49.92	-1,559.5	1,505.6	349.1	280.1	68.98	5.061		
6,200.0	5,738.2	6,124.7	5,620.4	44.1	47.1	50.69	-1,593.0	1,537.0	353.7	282.6	71.13	4.973		
6,300.0	5,826.9	6,224.5	5,709.0	45.1	48.1	51.44	-1,626.4	1,568.3	358.3	285.1	73.29	4.890		
6,400.0	5,915.6	6,324.3	5,797.7	46.1	49.1	52.17	-1,659.9	1,599.6	363.1	287.6	75.45	4.812		
6,500.0	6,004.3	6,424.0	5,886.3	47.1	50.0	52.88	-1,693.3	1,630.9	367.8	290.2	77.62	4.739		
6,600.0	6,093.1	6,523.8	5,974.9	48.1	51.0	53.57	-1,726.8	1,662.2	372.7	292.9	79.79	4.671		
6,700.0	6,182.7	6,623.7	6,063.6	48.9	52.0	45.90	-1,760.2	1,693.5	377.2	295.6	81.61	4.622		
6,800.0	6,275.7	6,722.9	6,151.8	49.5	53.0	27.05	-1,793.5	1,724.7	380.3	298.9	81.36	4.674		
6,900.0	6,370.3	6,817.8	6,237.1	49.9	53.7	1.26	-1,825.7	1,750.6	383.3	303.8	79.49	4.821		
7,000.0	6,464.9	6,914.5	6,326.4	50.1	54.3	-24.14	-1,859.7	1,764.7	387.4	310.1	77.30	5.011		
7,100.0	6,557.5	7,014.0	6,419.4	50.2	54.7	-43.53	-1,895.1	1,765.6	392.7	317.6	75.07	5.231		
7,200.0	6,646.4	7,116.9	6,514.5	50.2	54.9	-57.03	-1,931.6	1,752.0	398.9	325.9	73.01	5.464		
7,300.0	6,729.8	7,223.3	6,609.9	50.1	55.1	-66.56	-1,968.4	1,722.8	405.9	334.6	71.31	5.692		
7,400.0	6,806.2	7,333.4	6,703.1	49.9	55.1	-73.56	-2,004.6	1,677.0	413.3	343.2	70.12	5.894		
7,500.0	6,873.9	7,447.4	6,791.5	49.7	55.0	-78.86	-2,039.1	1,614.0	420.7	351.2	69.56	6.048		
7,600.0	6,931.7	7,565.2	6,871.7	49.5	54.8	-82.89	-2,070.8	1,534.0	427.8	358.0	69.78	6.131		
7,700.0	6,978.5	7,686.4	6,940.3	49.3	54.6	-85.91	-2,098.2	1,438.1	434.0	363.1	70.83	6.127		
7,800.0	7,013.3	7,810.8	6,993.9	49.2	54.3	-88.06	-2,120.1	1,328.2	438.9	366.1	72.76	6.032		
7,900.0	7,035.6	7,937.4	7,029.4	49.0	54.0	-89.40	-2,135.1	1,207.8	442.1	366.7	75.47	5.858		
8,000.0	7,044.7	8,065.4	7,044.5	49.0	53.7	-89.98	-2,142.5	1,081.1	443.5	364.8	78.75	5.632		
8,100.0	7,045.0	8,171.3	7,045.0	49.0	53.5	-90.00	-2,144.1	975.1	443.5	363.0	80.53	5.508		
8,200.0	7,045.0	8,271.3	7,045.0	49.1	53.4	-90.00	-2,145.4	875.1	443.4	361.2	82.19	5.395		
8,300.0	7,045.0	8,371.3	7,045.0	49.3	53.3	-90.00	-2,146.6	775.1	443.3	359.2	84.19	5.266		
8,400.0	7,045.0	8,471.3	7,045.0	49.6	53.3	-90.00	-2,147.9	675.1	443.3	356.8	86.50	5.124		
8,500.0	7,045.0	8,571.3	7,045.0	50.1	53.4	-90.00	-2,149.2	575.1	443.2	354.1	89.11	4.973		
8,600.0	7,045.0	8,671.3	7,045.0	50.8	53.6	-90.00	-2,150.4	475.1	443.1	351.1	91.99	4.817		
8,700.0	7,045.0	8,771.3	7,045.0	51.6	53.9	-90.00	-2,151.7	375.1	443.0	347.9	95.11	4.657		
8,800.0	7,045.0	8,871.3	7,045.0	52.7	54.3	-90.00	-2,153.0	275.1	442.9	344.4	98.46	4.498		
8,900.0	7,045.0	8,971.3	7,045.0	53.9	55.0	-90.00	-2,154.3	175.2	442.8	340.8	102.00	4.341		
9,000.0	7,045.0	9,071.3	7,045.0	55.2	55.9	-90.00	-2,155.5	75.2	442.7	337.0	105.72	4.188		
9,100.0	7,045.0	9,171.3	7,045.0	56.8	56.9	-90.00	-2,156.8	-24.8	442.6	333.0	109.60	4.039		
9,200.0	7,045.0	9,271.3	7,045.0	58.5	58.3	-90.00	-2,158.1	-124.8	442.6	328.9	113.63	3.895		
9,300.0	7,045.0	9,371.3	7,045.0	60.3	59.8	-90.00	-2,159.4	-224.8	442.5	324.7	117.79	3.757		
9,400.0	7,045.0	9,471.3	7,045.0	62.2	61.5	-90.00	-2,160.6	-324.8	442.4	320.3	122.06	3.624		
9,500.0	7,045.0	9,571.3	7,045.0	64.3	63.4	-90.00	-2,161.9	-424.8	442.3	315.9	126.43	3.498		
9,600.0	7,045.0	9,671.3	7,045.0	66.4	65.4	-90.00	-2,163.2	-524.8	442.2	311.3	130.91	3.378		
9,700.0	7,045.0	9,771.3	7,045.0	68.6	67.5	-90.00	-2,164.5	-624.8	442.1	306.7	135.46	3.264		
9,800.0	7,045.0	9,871.3	7,045.0	70.8	69.7	-90.00	-2,165.7	-724.8	442.0	301.9	140.09	3.155		
9,900.0	7,045.0	9,971.3	7,045.0	73.1	72.0	-90.00	-2,167.0	-824.8	441.9	297.2	144.79	3.052		
10,000.0	7,045.0	10,071.3	7,045.0	75.4	74.3	-90.00	-2,168.3	-924.8	441.9	292.3	149.56	2.954		
10,100.0	7,045.0	10,171.3	7,045.0	77.8	76.7	-90.00	-2,169.6	-1,024.7	441.8	287.4	154.38	2.862		
10,200.0	7,045.0	10,271.3	7,045.0	80.2	79.1	-90.00	-2,170.8	-1,124.7	441.7	282.4	159.25	2.774		

CC - Min centre to center distance or convergent point, SF - min separation factor, ES - min ellipse separation

Company:	Synergy Resources	Local Co-ordinate Reference:	Well SRC Weis A-9NHZ
Project:	SEC.4-T4N-R68W	TVD Reference:	WELL @ 5077.0ft (Original Well Elev)
Reference Site:	SRC Kiehn Pad Sec.4-T4N-R68W	MD Reference:	WELL @ 5077.0ft (Original Well Elev)
Site Error:	0.0ft	North Reference:	True
Reference Well:	SRC Weis A-9NHZ	Survey Calculation Method:	Minimum Curvature
Well Error:	0.0ft	Output errors are at	2.00 sigma
Reference Wellbore	Wellbore #1	Database:	Landmark
Reference Design:	Plan #1 (10-2-14)	Offset TVD Reference:	Offset Datum

Offset Design SRC Kiehn Pad Sec.4-T4N-R68W - SRC Weis 12-9NHZ - Wellbore #1 - Plan #1 (10-2-14)												Offset Site Error:	0.0 ft
Survey Program: 0-MWD												Offset Well Error:	0.0 ft
Reference		Offset		Semi Major Axis			Distance						Warning
Measured Depth (ft)	Vertical Depth (ft)	Measured Depth (ft)	Vertical Depth (ft)	Reference (ft)	Offset (ft)	Highside Toolface (°)	Offset Wellbore Centre +N/-S (ft)	+E/-W (ft)	Between Centres (ft)	Between Ellipses (ft)	Minimum Separation (ft)	Separation Factor	
10,300.0	7,045.0	10,371.3	7,045.0	82.7	81.5	-90.00	-2,172.1	-1,224.7	441.6	277.4	164.17	2.690	
10,400.0	7,045.0	10,471.3	7,045.0	85.1	84.0	-90.00	-2,173.4	-1,324.7	441.5	272.4	169.13	2.610	
10,500.0	7,045.0	10,571.3	7,045.0	87.6	86.5	-90.00	-2,174.7	-1,424.7	441.4	267.3	174.13	2.535	
10,600.0	7,045.0	10,671.3	7,045.0	90.1	89.0	-90.00	-2,175.9	-1,524.7	441.3	262.2	179.17	2.463	
10,700.0	7,045.0	10,771.3	7,045.0	92.7	91.6	-90.00	-2,177.2	-1,624.7	441.2	257.0	184.24	2.395	
10,800.0	7,045.0	10,871.3	7,045.0	95.2	94.1	-90.00	-2,178.5	-1,724.7	441.2	251.8	189.34	2.330	
10,900.0	7,045.0	10,971.3	7,045.0	97.8	96.7	-90.00	-2,179.8	-1,824.7	441.1	246.6	194.47	2.268	
11,000.0	7,045.0	11,071.3	7,045.0	100.4	99.3	-90.00	-2,181.0	-1,924.7	441.0	241.4	199.62	2.209	
11,100.0	7,045.0	11,171.3	7,045.0	103.0	101.9	-90.00	-2,182.3	-2,024.7	440.9	236.1	204.80	2.153	
11,200.0	7,045.0	11,271.3	7,045.0	105.6	104.5	-90.00	-2,183.6	-2,124.7	440.8	230.8	210.00	2.099	
11,300.0	7,045.0	11,371.3	7,045.0	108.2	107.1	-90.00	-2,184.8	-2,224.7	440.7	225.5	215.22	2.048	
11,400.0	7,045.0	11,471.3	7,045.0	110.8	109.7	-90.00	-2,186.1	-2,324.6	440.6	220.2	220.46	1.999	
11,500.0	7,045.0	11,571.3	7,045.0	113.4	112.4	-90.00	-2,187.4	-2,424.6	440.5	214.8	225.72	1.952	
11,600.0	7,045.0	11,671.3	7,045.0	116.1	115.0	-90.00	-2,188.7	-2,524.6	440.5	209.5	230.99	1.907	
11,700.0	7,045.0	11,771.3	7,045.0	118.7	117.7	-90.00	-2,189.9	-2,624.6	440.4	204.1	236.28	1.864	
11,800.0	7,045.0	11,871.3	7,045.0	121.4	120.3	-90.00	-2,191.2	-2,724.6	440.3	198.7	241.58	1.823	
11,900.0	7,045.0	11,971.3	7,045.0	124.0	123.0	-90.00	-2,192.5	-2,824.6	440.2	193.3	246.90	1.783	
12,000.0	7,045.0	12,071.3	7,045.0	126.7	125.7	-90.00	-2,193.8	-2,924.6	440.1	187.9	252.23	1.745	
12,075.6	7,045.0	12,146.9	7,045.0	128.7	127.7	-90.00	-2,194.7	-3,000.2	440.0	183.8	256.27	1.717 SF	

Company:	Synergy Resources	Local Co-ordinate Reference:	Well SRC Weis A-9NHZ
Project:	SEC.4-T4N-R68W	TVD Reference:	WELL @ 5077.0ft (Original Well Elev)
Reference Site:	SRC Kiehn Pad Sec.4-T4N-R68W	MD Reference:	WELL @ 5077.0ft (Original Well Elev)
Site Error:	0.0ft	North Reference:	True
Reference Well:	SRC Weis A-9NHZ	Survey Calculation Method:	Minimum Curvature
Well Error:	0.0ft	Output errors are at	2.00 sigma
Reference Wellbore	Wellbore #1	Database:	Landmark
Reference Design:	Plan #1 (10-2-14)	Offset TVD Reference:	Offset Datum

Offset Design													Offset Site Error:	0.0 ft
Survey Program: 0-MWD													Offset Well Error:	0.0 ft
Reference		Offset		Semi Major Axis			Distance							Warning
Measured Depth (ft)	Vertical Depth (ft)	Measured Depth (ft)	Vertical Depth (ft)	Reference (ft)	Offset (ft)	Highside Toolface (°)	Offset Wellbore Centre +N/-S (ft)	+E/-W (ft)	Between Centres (ft)	Between Ellipses (ft)	Minimum Separation (ft)	Separation Factor		
0.0	0.0	0.0	0.0	0.0	0.0	89.08	0.4	22.6	22.6					
100.0	100.0	100.0	100.0	0.1	0.1	89.08	0.4	22.6	22.6	22.4	0.22	100.481		
200.0	200.0	200.0	200.0	0.3	0.3	89.08	0.4	22.6	22.6	21.9	0.67	33.494 CC		
213.6	213.6	213.6	213.6	0.4	0.4	-91.01	0.4	22.6	22.6	21.9	0.73	30.845		
300.0	300.0	300.0	300.0	0.5	0.6	-95.33	0.4	22.6	22.7	21.6	1.10	20.621		
400.0	399.9	399.9	399.9	0.8	0.8	-106.49	0.4	22.6	23.6	22.0	1.53	15.373		
500.0	499.8	499.8	499.8	1.0	1.0	-114.26	0.4	22.6	24.8	22.8	1.98	12.503		
600.0	599.8	599.8	599.8	1.2	1.2	-117.84	0.4	22.6	25.5	23.1	2.43	10.516		
700.0	699.8	699.8	699.8	1.4	1.5	61.73	0.4	22.6	25.6	22.8	2.86	8.972		
800.0	799.8	799.8	799.8	1.6	1.7	61.73	0.4	22.6	25.6	22.3	3.30	7.766		
900.0	899.8	899.8	899.8	1.8	1.9	61.73	0.4	22.6	25.6	21.9	3.75	6.843		
1,000.0	999.8	999.5	999.5	2.1	2.1	65.31	-0.8	23.8	26.2	22.1	4.17	6.294		
1,100.0	1,099.8	1,098.9	1,098.7	2.3	2.3	74.96	-4.4	27.6	28.6	24.0	4.58	6.252		
1,200.0	1,199.8	1,197.9	1,197.3	2.5	2.5	87.38	-10.2	33.9	34.0	29.0	4.99	6.805		
1,300.0	1,299.8	1,296.3	1,295.1	2.7	2.7	-30.97	-18.4	42.5	41.8	36.4	5.41	7.732		
1,400.0	1,399.6	1,394.5	1,392.0	2.9	3.0	-23.79	-28.8	53.6	50.4	44.6	5.81	8.674		
1,500.0	1,499.2	1,492.2	1,488.0	3.1	3.3	-18.54	-41.4	67.0	59.4	53.1	6.22	9.546		
1,600.0	1,598.5	1,589.7	1,583.0	3.4	3.6	-14.51	-56.2	82.8	68.5	61.9	6.63	10.332		
1,700.0	1,697.3	1,686.8	1,676.9	3.6	4.1	-11.27	-73.1	100.8	77.8	70.8	7.06	11.030		
1,800.0	1,795.4	1,783.6	1,769.6	3.9	4.5	-8.59	-92.2	121.1	87.2	79.7	7.49	11.643		
1,900.0	1,892.9	1,880.0	1,861.0	4.3	5.1	-6.29	-113.3	143.6	96.5	88.6	7.92	12.179		
2,000.0	1,989.4	1,976.2	1,951.1	4.7	5.7	-4.29	-136.4	168.2	105.8	97.4	8.37	12.642		
2,100.0	2,085.1	2,072.0	2,039.6	5.2	6.4	-2.50	-161.5	194.9	115.1	106.2	8.83	13.028		
2,200.0	2,179.6	2,167.6	2,126.6	5.8	7.1	-0.87	-188.5	223.7	124.3	114.9	9.31	13.350		
2,300.0	2,273.0	2,264.6	2,213.7	6.4	7.9	0.64	-217.8	254.9	133.1	123.3	9.81	13.575		
2,400.0	2,365.0	2,364.3	2,303.0	7.1	8.8	2.05	-248.3	287.3	139.2	128.8	10.33	13.472		
2,500.0	2,455.7	2,464.2	2,392.4	7.9	9.7	3.43	-278.8	319.8	141.8	131.0	10.88	13.040		
2,600.0	2,544.8	2,564.2	2,481.8	8.7	10.6	4.87	-309.3	352.3	141.2	129.7	11.48	12.304		
2,700.0	2,633.5	2,664.1	2,571.2	9.6	11.5	6.37	-339.8	384.8	139.7	127.5	12.19	11.462		
2,800.0	2,722.2	2,764.0	2,660.7	10.6	12.4	7.90	-370.3	417.3	138.3	125.4	12.94	10.685		
2,900.0	2,810.9	2,863.9	2,750.1	11.5	13.4	9.46	-400.9	449.8	137.0	123.2	13.75	9.964		
3,000.0	2,899.6	2,963.9	2,839.5	12.4	14.3	11.05	-431.4	482.3	135.8	121.2	14.61	9.295		
3,100.0	2,988.3	3,063.8	2,928.9	13.4	15.2	12.67	-461.9	514.8	134.7	119.1	15.53	8.670		
3,200.0	3,077.0	3,163.7	3,018.4	14.3	16.2	14.31	-492.4	547.3	133.7	117.2	16.53	8.086		
3,300.0	3,165.7	3,263.6	3,107.8	15.3	17.1	15.98	-522.9	579.8	132.8	115.2	17.61	7.541		
3,400.0	3,254.5	3,363.5	3,197.2	16.3	18.0	17.66	-553.5	612.3	132.0	113.3	18.77	7.033		
3,500.0	3,343.2	3,463.5	3,286.6	17.3	19.0	19.36	-584.0	644.7	131.4	111.4	20.03	6.561		
3,600.0	3,431.9	3,563.4	3,376.1	18.2	19.9	21.08	-614.5	677.2	130.9	109.5	21.37	6.123		
3,700.0	3,520.6	3,663.3	3,465.5	19.2	20.9	22.82	-645.0	709.7	130.4	107.6	22.81	5.718		
3,800.0	3,609.3	3,763.2	3,554.9	20.2	21.8	24.56	-675.5	742.2	130.1	105.8	24.35	5.346		
3,900.0	3,698.0	3,863.1	3,644.3	21.2	22.8	26.30	-706.1	774.7	130.0	104.0	25.98	5.004		
3,992.9	3,780.4	3,956.0	3,727.4	22.1	23.7	27.93	-734.4	804.9	129.9	102.3	27.57	4.712		
4,000.0	3,786.7	3,963.1	3,733.8	22.2	23.7	28.05	-736.6	807.2	129.9	102.2	27.70	4.690		
4,100.0	3,875.4	4,063.0	3,823.2	23.2	24.7	29.81	-767.1	839.7	130.0	100.5	29.51	4.405		
4,200.0	3,964.1	4,162.9	3,912.6	24.1	25.6	31.55	-797.6	872.2	130.2	98.8	31.41	4.145		
4,300.0	4,052.8	4,262.8	4,002.0	25.1	26.6	33.29	-828.1	904.7	130.5	97.1	33.39	3.908		
4,400.0	4,141.5	4,362.8	4,091.5	26.1	27.5	35.02	-858.7	937.2	130.9	95.5	35.44	3.694		
4,500.0	4,230.2	4,462.7	4,180.9	27.1	28.5	36.74	-889.2	969.7	131.5	93.9	37.57	3.500		
4,600.0	4,318.9	4,562.6	4,270.3	28.1	29.4	38.44	-919.7	1,002.2	132.1	92.4	39.75	3.324		
4,700.0	4,407.6	4,662.5	4,359.7	29.1	30.4	40.12	-950.2	1,034.7	132.9	90.9	42.00	3.165		
4,800.0	4,496.3	4,762.4	4,449.1	30.1	31.3	41.79	-980.7	1,067.2	133.8	89.5	44.29	3.021		
4,900.0	4,585.0	4,862.4	4,538.6	31.1	32.3	43.42	-1,011.3	1,099.7	134.8	88.2	46.64	2.891		

CC - Min centre to center distance or convergent point, SF - min separation factor, ES - min ellipse separation

Company:	Synergy Resources	Local Co-ordinate Reference:	Well SRC Weis A-9NHZ
Project:	SEC.4-T4N-R68W	TVD Reference:	WELL @ 5077.0ft (Original Well Elev)
Reference Site:	SRC Kiehn Pad Sec.4-T4N-R68W	MD Reference:	WELL @ 5077.0ft (Original Well Elev)
Site Error:	0.0ft	North Reference:	True
Reference Well:	SRC Weis A-9NHZ	Survey Calculation Method:	Minimum Curvature
Well Error:	0.0ft	Output errors are at	2.00 sigma
Reference Wellbore	Wellbore #1	Database:	Landmark
Reference Design:	Plan #1 (10-2-14)	Offset TVD Reference:	Offset Datum

Offset Design												Offset Site Error:	0.0ft
Survey Program: 0-MWID												Offset Well Error:	0.0ft
Reference		Offset		Semi Major Axis			Distance						
Measured Depth (ft)	Vertical Depth (ft)	Measured Depth (ft)	Vertical Depth (ft)	Reference (ft)	Offset (ft)	Highside Toolface (°)	Offset Wellbore Centre +N/-S (ft)	+E/-W (ft)	Between Centres (ft)	Between Ellipses (ft)	Minimum Separation (ft)	Separation Factor	Warning
5,000.0	4,673.8	4,962.3	4,628.0	32.1	33.3	45.04	-1,041.8	1,132.2	135.9	86.9	49.02	2.773	
5,100.0	4,762.5	5,062.2	4,717.4	33.1	34.2	46.62	-1,072.3	1,164.7	137.2	85.7	51.43	2.667	
5,200.0	4,851.2	5,162.1	4,806.8	34.1	35.2	48.18	-1,102.8	1,197.2	138.5	84.6	53.87	2.571	
5,300.0	4,939.9	5,262.0	4,896.3	35.1	36.1	49.70	-1,133.3	1,229.7	139.9	83.6	56.33	2.484	
5,400.0	5,028.6	5,362.0	4,985.7	36.1	37.1	51.20	-1,163.9	1,262.2	141.4	82.6	58.81	2.405	
5,500.0	5,117.3	5,461.9	5,075.1	37.1	38.0	52.66	-1,194.4	1,294.7	143.1	81.8	61.30	2.334	
5,600.0	5,206.0	5,561.8	5,164.5	38.1	39.0	54.09	-1,224.9	1,327.2	144.8	81.0	63.79	2.269	
5,700.0	5,294.7	5,661.7	5,254.0	39.1	39.9	55.48	-1,255.4	1,359.7	146.6	80.3	66.30	2.211	
5,800.0	5,383.4	5,761.6	5,343.4	40.1	40.9	56.84	-1,285.9	1,392.2	148.4	79.6	68.80	2.158	
5,900.0	5,472.1	5,861.6	5,432.8	41.1	41.9	58.16	-1,316.5	1,424.6	150.4	79.1	71.30	2.109	
6,000.0	5,560.8	5,961.5	5,522.2	42.1	42.8	59.45	-1,347.0	1,457.1	152.4	78.6	73.80	2.066	
6,100.0	5,649.5	6,061.4	5,611.7	43.1	43.8	60.71	-1,377.5	1,489.6	154.6	78.3	76.29	2.026	
6,200.0	5,738.2	6,161.3	5,701.1	44.1	44.7	61.93	-1,408.0	1,522.1	156.7	78.0	78.77	1.990	
6,300.0	5,826.9	6,261.3	5,790.5	45.1	45.7	63.12	-1,438.5	1,554.6	159.0	77.8	81.24	1.957	
6,400.0	5,915.6	6,361.2	5,879.9	46.1	46.6	64.27	-1,469.1	1,587.1	161.3	77.6	83.70	1.927	
6,500.0	6,004.3	6,461.1	5,969.4	47.1	47.6	65.39	-1,499.6	1,619.6	163.7	77.6	86.14	1.901	
6,600.0	6,093.1	6,561.0	6,058.8	48.1	48.5	66.48	-1,530.1	1,652.1	166.2	77.6	88.57	1.876	
6,700.0	6,182.7	6,661.0	6,148.2	48.9	49.5	67.49	-1,560.6	1,684.6	167.6	77.4	90.23	1.858	
6,800.0	6,275.7	6,760.1	6,236.9	49.5	50.5	68.75	-1,590.9	1,716.9	165.1	76.7	88.39	1.868	
6,900.0	6,370.3	6,854.8	6,322.5	49.9	51.2	69.78	-1,620.1	1,745.1	161.9	76.8	83.02	1.949	
6,947.6	6,415.5	6,900.0	6,364.2	50.0	51.5	-9.51	-1,634.5	1,754.6	161.4	81.5	79.93	2.020	
7,000.0	6,464.9	6,950.6	6,411.5	50.1	51.7	-25.24	-1,650.7	1,762.0	162.0	85.6	76.38	2.120	
7,100.0	6,557.5	7,049.6	6,505.0	50.2	52.1	-50.20	-1,683.1	1,766.1	165.9	96.3	69.60	2.383	
7,200.0	6,646.4	7,152.5	6,601.6	50.2	52.4	-68.81	-1,716.6	1,755.8	173.3	109.8	63.52	2.728	
7,300.0	6,729.8	7,259.4	6,699.4	50.1	52.5	-82.72	-1,750.8	1,729.8	183.5	124.9	58.61	3.131	
7,400.0	6,806.2	7,370.8	6,796.1	49.9	52.5	-93.28	-1,784.9	1,686.7	195.5	140.5	55.01	3.555	
7,500.0	6,873.9	7,486.7	6,888.8	49.7	52.4	-101.32	-1,817.8	1,625.4	208.2	155.4	52.79	3.944	
7,600.0	6,931.7	7,607.3	6,973.8	49.5	52.1	-107.40	-1,848.4	1,545.8	220.5	168.4	52.14	4.230	
7,700.0	6,978.5	7,732.3	7,047.3	49.3	51.9	-111.86	-1,875.1	1,448.5	231.4	178.1	53.29	4.343	
7,800.0	7,013.3	7,861.1	7,105.1	49.2	51.6	-114.95	-1,896.7	1,335.7	240.1	183.8	56.31	4.264	
7,900.0	7,035.6	7,992.7	7,143.4	49.0	51.3	-116.82	-1,911.7	1,210.8	245.8	184.8	61.00	4.030	
8,000.0	7,044.7	8,126.1	7,159.6	49.0	51.1	-117.57	-1,919.0	1,078.8	248.2	181.3	66.91	3.710	
8,100.0	7,045.0	8,232.5	7,160.0	49.0	51.0	-117.59	-1,920.6	972.4	248.3	179.2	69.10	3.593	
8,200.0	7,045.0	8,332.5	7,160.0	49.1	50.9	-117.59	-1,922.0	872.4	248.3	177.7	70.55	3.519	
8,300.0	7,045.0	8,432.5	7,160.0	49.3	51.0	-117.59	-1,923.4	772.5	248.3	176.0	72.32	3.433	
8,400.0	7,045.0	8,532.5	7,160.0	49.6	51.1	-117.59	-1,924.7	672.5	248.3	173.9	74.39	3.338	
8,500.0	7,045.0	8,632.5	7,160.0	50.1	51.3	-117.59	-1,926.1	572.5	248.3	171.6	76.73	3.236	
8,600.0	7,045.0	8,732.5	7,160.0	50.8	51.7	-117.59	-1,927.4	472.5	248.3	169.0	79.33	3.130	
8,700.0	7,045.0	8,832.5	7,160.0	51.6	52.3	-117.59	-1,928.8	372.5	248.3	166.2	82.14	3.023	
8,800.0	7,045.0	8,932.5	7,160.0	52.7	53.0	-117.59	-1,930.2	272.5	248.3	163.1	85.16	2.916	
8,900.0	7,045.0	9,032.5	7,160.0	53.9	54.0	-117.59	-1,931.5	172.5	248.3	159.9	88.37	2.810	
9,000.0	7,045.0	9,132.5	7,160.0	55.2	55.1	-117.59	-1,932.9	72.5	248.3	156.6	91.73	2.707	
9,100.0	7,045.0	9,232.5	7,160.0	56.8	56.5	-117.59	-1,934.3	-27.5	248.3	153.1	95.25	2.607	
9,200.0	7,045.0	9,332.5	7,160.0	58.5	58.0	-117.59	-1,935.6	-127.5	248.3	149.4	98.89	2.511	
9,300.0	7,045.0	9,432.5	7,160.0	60.3	59.7	-117.59	-1,937.0	-227.5	248.3	145.7	102.65	2.419	
9,400.0	7,045.0	9,532.5	7,160.0	62.2	61.5	-117.59	-1,938.3	-327.4	248.3	141.8	106.51	2.331	
9,500.0	7,045.0	9,632.5	7,160.0	64.3	63.5	-117.59	-1,939.7	-427.4	248.3	137.8	110.47	2.248	
9,600.0	7,045.0	9,732.5	7,160.0	66.4	65.6	-117.59	-1,941.1	-527.4	248.3	133.8	114.51	2.168	
9,700.0	7,045.0	9,832.5	7,160.0	68.6	67.7	-117.59	-1,942.4	-627.4	248.3	129.7	118.62	2.093	
9,800.0	7,045.0	9,932.5	7,160.0	70.8	70.0	-117.59	-1,943.8	-727.4	248.3	125.5	122.80	2.022	
9,900.0	7,045.0	10,032.5	7,160.0	73.1	72.2	-117.59	-1,945.1	-827.4	248.3	121.3	127.05	1.954	
10,000.0	7,045.0	10,132.5	7,160.0	75.4	74.6	-117.59	-1,946.5	-927.4	248.3	117.0	131.35	1.890	

CC - Min centre to center distance or convergent point, SF - min separation factor, ES - min ellipse separation

Company:	Synergy Resources	Local Co-ordinate Reference:	Well SRC Weis A-9NHZ
Project:	SEC.4-T4N-R68W	TVD Reference:	WELL @ 5077.0ft (Original Well Elev)
Reference Site:	SRC Kiehn Pad Sec.4-T4N-R68W	MD Reference:	WELL @ 5077.0ft (Original Well Elev)
Site Error:	0.0ft	North Reference:	True
Reference Well:	SRC Weis A-9NHZ	Survey Calculation Method:	Minimum Curvature
Well Error:	0.0ft	Output errors are at	2.00 sigma
Reference Wellbore	Wellbore #1	Database:	Landmark
Reference Design:	Plan #1 (10-2-14)	Offset TVD Reference:	Offset Datum

Offset Design SRC Kiehn Pad Sec.4-T4N-R68W - SRC Weis A-9CHZ - Wellbore #1 - Plan #1 (10-2-14)													Offset Site Error: 0.0 ft
Survey Program: 0-MWD													Offset Well Error: 0.0 ft
Reference		Offset		Semi Major Axis			Distance						Warning
Measured Depth (ft)	Vertical Depth (ft)	Measured Depth (ft)	Vertical Depth (ft)	Reference (ft)	Offset (ft)	Highside Toolface (°)	Offset Wellbore Centre +N/-S (ft)	+E/-W (ft)	Between Centres (ft)	Between Ellipses (ft)	Minimum Separation (ft)	Separation Factor	
10,100.0	7,045.0	10,232.5	7,160.0	77.8	76.9	-117.59	-1,947.9	-1,027.4	248.3	112.6	135.69	1.830	
10,200.0	7,045.0	10,332.5	7,160.0	80.2	79.4	-117.59	-1,949.2	-1,127.4	248.3	108.2	140.09	1.772	
10,300.0	7,045.0	10,432.5	7,160.0	82.7	81.8	-117.59	-1,950.6	-1,227.4	248.3	103.8	144.52	1.718	
10,400.0	7,045.0	10,532.5	7,160.0	85.1	84.3	-117.59	-1,951.9	-1,327.4	248.3	99.3	148.99	1.667	
10,500.0	7,045.0	10,632.5	7,160.0	87.6	86.8	-117.59	-1,953.3	-1,427.3	248.3	94.8	153.50	1.618	
10,600.0	7,045.0	10,732.5	7,160.0	90.1	89.3	-117.59	-1,954.7	-1,527.3	248.3	90.3	158.03	1.571	
10,700.0	7,045.0	10,832.5	7,160.0	92.7	91.8	-117.59	-1,956.0	-1,627.3	248.3	85.7	162.60	1.527	
10,800.0	7,045.0	10,932.5	7,160.0	95.2	94.4	-117.59	-1,957.4	-1,727.3	248.3	81.1	167.19	1.485	Level 3
10,900.0	7,045.0	11,032.5	7,160.0	97.8	96.9	-117.59	-1,958.8	-1,827.3	248.3	76.5	171.81	1.445	Level 3
11,000.0	7,045.0	11,132.5	7,160.0	100.4	99.5	-117.59	-1,960.1	-1,927.3	248.3	71.9	176.44	1.407	Level 3
11,100.0	7,045.0	11,232.5	7,160.0	103.0	102.1	-117.59	-1,961.5	-2,027.3	248.3	67.2	181.10	1.371	Level 3
11,200.0	7,045.0	11,332.5	7,160.0	105.6	104.7	-117.59	-1,962.8	-2,127.3	248.3	62.5	185.78	1.337	Level 3
11,300.0	7,045.0	11,432.5	7,160.0	108.2	107.3	-117.59	-1,964.2	-2,227.3	248.3	57.8	190.47	1.304	Level 3
11,400.0	7,045.0	11,532.5	7,160.0	110.8	110.0	-117.59	-1,965.6	-2,327.3	248.3	53.1	195.18	1.272	Level 3
11,500.0	7,045.0	11,632.5	7,160.0	113.4	112.6	-117.59	-1,966.9	-2,427.3	248.3	48.4	199.91	1.242	Level 2
11,600.0	7,045.0	11,732.5	7,160.0	116.1	115.2	-117.59	-1,968.3	-2,527.2	248.3	43.6	204.65	1.213	Level 2
11,700.0	7,045.0	11,832.5	7,160.0	118.7	117.9	-117.59	-1,969.6	-2,627.2	248.3	38.9	209.40	1.186	Level 2
11,800.0	7,045.0	11,932.5	7,160.0	121.4	120.5	-117.59	-1,971.0	-2,727.2	248.3	34.1	214.17	1.159	Level 2
11,900.0	7,045.0	12,032.5	7,160.0	124.0	123.2	-117.59	-1,972.4	-2,827.2	248.3	29.4	218.94	1.134	Level 2
12,000.0	7,045.0	12,132.5	7,160.0	126.7	125.9	-117.59	-1,973.7	-2,927.2	248.3	24.6	223.73	1.110	Level 2
12,075.6	7,045.0	12,208.1	7,160.0	128.7	127.9	-117.59	-1,974.8	-3,002.8	248.3	20.9	227.36	1.092	Level 2, ES, SF

Company:	Synergy Resources	Local Co-ordinate Reference:	Well SRC Weis A-9NHZ
Project:	SEC.4-T4N-R68W	TVD Reference:	WELL @ 5077.0ft (Original Well Elev)
Reference Site:	SRC Kiehn Pad Sec.4-T4N-R68W	MD Reference:	WELL @ 5077.0ft (Original Well Elev)
Site Error:	0.0ft	North Reference:	True
Reference Well:	SRC Weis A-9NHZ	Survey Calculation Method:	Minimum Curvature
Well Error:	0.0ft	Output errors are at	2.00 sigma
Reference Wellbore	Wellbore #1	Database:	Landmark
Reference Design:	Plan #1 (10-2-14)	Offset TVD Reference:	Offset Datum

Offset Design													Offset Site Error:	0.0 ft
Survey Program: 0-MWD													Offset Well Error:	0.0 ft
Reference		Offset		Semi Major Axis			Distance							Warning
Measured Depth (ft)	Vertical Depth (ft)	Measured Depth (ft)	Vertical Depth (ft)	Reference (ft)	Offset (ft)	Highside Toolface (°)	Offset Wellbore Centre +N/-S (ft)	+E/-W (ft)	Between Centres (ft)	Between Ellipses (ft)	Minimum Separation (ft)	Separation Factor		
0.0	0.0	0.0	0.0	0.0	0.0	89.07	1.5	90.0	90.1					
100.0	100.0	100.0	100.0	0.1	0.1	89.07	1.5	90.0	90.1	89.8	0.22	400.683		
200.0	200.0	200.0	200.0	0.3	0.3	89.07	1.5	90.0	90.1	89.4	0.67	133.561 CC, ES		
300.0	300.0	298.2	298.2	0.5	0.5	-91.13	0.1	91.1	91.1	90.0	1.08	84.677		
400.0	399.9	396.3	396.2	0.8	0.7	-91.35	-3.9	94.1	94.2	92.7	1.49	63.178		
500.0	499.8	494.2	493.6	1.0	1.0	-89.42	-10.6	99.1	99.3	97.3	1.95	50.889		
600.0	599.8	591.4	590.2	1.2	1.3	-85.42	-20.0	106.0	106.7	104.3	2.43	43.902		
700.0	699.8	687.6	685.3	1.4	1.6	99.88	-31.8	114.8	117.4	114.6	2.83	41.501		
800.0	799.8	782.7	778.7	1.6	1.9	105.25	-45.9	125.3	131.6	128.3	3.30	39.881		
900.0	899.8	876.6	870.3	1.8	2.4	110.19	-62.3	137.5	149.5	145.7	3.79	39.394		
1,000.0	999.8	968.9	959.7	2.1	2.8	114.54	-80.8	151.3	171.1	166.7	4.32	39.586		
1,100.0	1,099.8	1,059.7	1,046.8	2.3	3.3	118.26	-101.3	166.5	196.3	191.4	4.89	40.171		
1,200.0	1,199.8	1,148.7	1,131.4	2.5	3.9	121.39	-123.4	183.0	225.0	219.5	5.49	40.978		
1,300.0	1,299.8	1,236.4	1,213.9	2.7	4.5	-4.64	-147.3	200.7	255.3	249.5	5.86	43.568		
1,400.0	1,399.6	1,323.2	1,294.7	2.9	5.1	-2.44	-173.0	219.8	285.6	279.3	6.32	45.203		
1,500.0	1,499.2	1,409.3	1,373.7	3.1	5.8	-0.57	-200.3	240.2	315.7	308.9	6.78	46.532		
1,600.0	1,598.5	1,494.7	1,451.0	3.4	6.5	1.07	-229.3	261.7	345.5	338.2	7.26	47.604		
1,700.0	1,697.3	1,579.7	1,527.0	3.6	7.3	2.53	-260.0	284.6	375.0	367.3	7.74	48.441		
1,800.0	1,795.4	1,675.3	1,611.7	3.9	8.2	3.99	-295.4	310.9	402.8	394.5	8.26	48.742		
1,900.0	1,892.9	1,771.7	1,697.3	4.3	9.1	5.28	-331.2	337.5	427.3	418.6	8.79	48.610		
2,000.0	1,889.4	1,869.0	1,783.5	4.7	10.0	6.48	-367.2	364.3	448.8	439.4	9.33	48.091		
2,100.0	2,085.1	1,966.8	1,870.3	5.2	11.0	7.63	-403.5	391.3	467.0	457.1	9.88	47.240		
2,200.0	2,179.6	2,065.2	1,957.6	5.8	11.9	8.75	-440.0	418.4	482.0	471.5	10.45	46.104		
2,300.0	2,273.0	2,164.1	2,045.2	6.4	12.9	9.87	-476.6	445.7	493.7	482.7	11.04	44.717		
2,400.0	2,365.0	2,263.2	2,133.1	7.1	13.8	11.02	-513.3	473.0	502.3	490.6	11.65	43.105		
2,500.0	2,455.7	2,362.4	2,221.2	7.9	14.8	12.22	-550.1	500.4	507.6	495.3	12.30	41.285		
2,600.0	2,544.8	2,461.7	2,309.2	8.7	15.8	13.49	-586.9	527.8	509.9	496.9	13.00	39.222		
2,700.0	2,633.5	2,561.0	2,397.3	9.6	16.7	14.79	-623.7	555.2	511.5	497.7	13.81	37.040		
2,800.0	2,722.2	2,660.3	2,485.4	10.6	17.7	16.08	-660.5	582.5	513.4	498.7	14.67	35.003		
2,900.0	2,810.9	2,759.6	2,573.5	11.5	18.6	17.36	-697.3	609.9	515.5	500.0	15.58	33.100		
3,000.0	2,899.6	2,858.9	2,661.5	12.4	19.6	18.63	-734.1	637.3	517.9	501.4	16.54	31.323		
3,100.0	2,988.3	2,958.3	2,749.6	13.4	20.6	19.89	-770.9	664.7	520.6	503.0	17.55	29.663		
3,200.0	3,077.0	3,057.6	2,837.7	14.3	21.5	21.13	-807.8	692.1	523.5	504.9	18.62	28.114		
3,300.0	3,165.7	3,156.9	2,925.8	15.3	22.5	22.36	-844.6	719.4	526.6	506.9	19.75	26.671		
3,400.0	3,254.5	3,256.2	3,013.8	16.3	23.5	23.58	-881.4	746.8	530.0	509.1	20.93	25.327		
3,500.0	3,343.2	3,355.5	3,101.9	17.3	24.4	24.78	-918.2	774.2	533.6	511.5	22.16	24.076		
3,600.0	3,431.9	3,454.8	3,190.0	18.2	25.4	25.96	-955.0	801.6	537.5	514.1	23.46	22.915		
3,700.0	3,520.6	3,554.1	3,278.1	19.2	26.4	27.12	-991.8	829.0	541.6	516.8	24.80	21.836		
3,800.0	3,609.3	3,653.4	3,366.1	20.2	27.3	28.27	-1,028.6	856.4	545.9	519.7	26.20	20.836		
3,900.0	3,698.0	3,752.7	3,454.2	21.2	28.3	29.40	-1,065.4	883.7	550.4	522.8	27.65	19.908		
4,000.0	3,786.7	3,852.0	3,542.3	22.2	29.3	30.51	-1,102.2	911.1	555.2	526.0	29.15	19.048		
4,100.0	3,875.4	3,951.3	3,630.4	23.2	30.2	31.60	-1,139.0	938.5	560.1	529.4	30.69	18.252		
4,200.0	3,964.1	4,050.6	3,718.4	24.1	31.2	32.68	-1,175.8	965.9	565.3	533.0	32.28	17.514		
4,300.0	4,052.8	4,149.9	3,806.5	25.1	32.2	33.73	-1,212.6	993.3	570.6	536.7	33.91	16.830		
4,400.0	4,141.5	4,249.2	3,894.6	26.1	33.1	34.76	-1,249.4	1,020.7	576.2	540.6	35.58	16.195		
4,500.0	4,230.2	4,348.5	3,982.6	27.1	34.1	35.77	-1,286.2	1,048.0	581.9	544.6	37.28	15.608		
4,600.0	4,318.9	4,447.8	4,070.7	28.1	35.1	36.77	-1,323.1	1,075.4	587.8	548.8	39.02	15.062		
4,700.0	4,407.6	4,547.1	4,158.8	29.1	36.1	37.74	-1,359.9	1,102.8	593.9	553.1	40.80	14.556		
4,800.0	4,496.3	4,646.4	4,246.9	30.1	37.0	38.70	-1,396.7	1,130.2	600.1	557.5	42.61	14.085		
4,900.0	4,585.0	4,745.8	4,334.9	31.1	38.0	39.63	-1,433.5	1,157.6	606.5	562.1	44.44	13.648		
5,000.0	4,673.8	4,845.1	4,423.0	32.1	39.0	40.54	-1,470.3	1,185.0	613.1	566.8	46.30	13.241		
5,100.0	4,762.5	4,944.4	4,511.1	33.1	39.9	41.44	-1,507.1	1,212.3	619.8	571.6	48.19	12.862		

CC - Min centre to center distance or convergent point, SF - min separation factor, ES - min ellipse separation

Company:	Synergy Resources	Local Co-ordinate Reference:	Well SRC Weis A-9NHZ
Project:	SEC.4-T4N-R68W	TVD Reference:	WELL @ 5077.0ft (Original Well Elev)
Reference Site:	SRC Kiehn Pad Sec.4-T4N-R68W	MD Reference:	WELL @ 5077.0ft (Original Well Elev)
Site Error:	0.0ft	North Reference:	True
Reference Well:	SRC Weis A-9NHZ	Survey Calculation Method:	Minimum Curvature
Well Error:	0.0ft	Output errors are at	2.00 sigma
Reference Wellbore	Wellbore #1	Database:	Landmark
Reference Design:	Plan #1 (10-2-14)	Offset TVD Reference:	Offset Datum

Offset Design												Offset Site Error:	0.0 ft
Survey Program: 0-MWID												Offset Well Error:	0.0 ft
Reference		Offset		Semi Major Axis			Distance						Warning
Measured Depth (ft)	Vertical Depth (ft)	Measured Depth (ft)	Vertical Depth (ft)	Reference (ft)	Offset (ft)	Highside Toolface (°)	Offset Wellbore Centre +N/-S (ft)	+E/-W (ft)	Between Centres (ft)	Between Ellipses (ft)	Minimum Separation (ft)	Separation Factor	
5,200.0	4,851.2	5,043.7	4,599.2	34.1	40.9	42.32	-1,543.9	1,239.7	626.7	576.6	50.10	12.509	
5,300.0	4,939.9	5,143.0	4,687.2	35.1	41.9	43.17	-1,580.7	1,267.1	633.7	581.7	52.03	12.179	
5,400.0	5,028.6	5,242.3	4,775.3	36.1	42.8	44.01	-1,617.5	1,294.5	640.8	586.9	53.98	11.872	
5,500.0	5,117.3	5,341.6	4,863.4	37.1	43.8	44.83	-1,654.3	1,321.9	648.1	592.2	55.95	11.584	
5,600.0	5,206.0	5,440.9	4,951.5	38.1	44.8	45.63	-1,691.1	1,349.3	655.5	597.6	57.94	11.315	
5,700.0	5,294.7	5,540.2	5,039.5	39.1	45.7	46.42	-1,727.9	1,376.6	663.1	603.1	59.94	11.063	
5,800.0	5,383.4	5,639.5	5,127.6	40.1	46.7	47.18	-1,764.7	1,404.0	670.7	608.8	61.95	10.827	
5,900.0	5,472.1	5,738.8	5,215.7	41.1	47.7	47.93	-1,801.5	1,431.4	678.5	614.6	63.98	10.606	
6,000.0	5,560.8	5,838.1	5,303.8	42.1	48.6	48.66	-1,838.4	1,458.8	686.4	620.4	66.02	10.398	
6,100.0	5,649.5	5,937.4	5,391.8	43.1	49.6	49.38	-1,875.2	1,486.2	694.4	626.4	68.07	10.202	
6,200.0	5,738.2	6,036.7	5,479.9	44.1	50.6	50.08	-1,912.0	1,513.6	702.5	632.4	70.13	10.018	
6,300.0	5,826.9	6,136.0	5,568.0	45.1	51.6	50.76	-1,948.8	1,540.9	710.8	638.6	72.19	9.845	
6,400.0	5,915.6	6,235.3	5,656.1	46.1	52.5	51.43	-1,985.6	1,568.3	719.1	644.8	74.27	9.682	
6,500.0	6,004.3	6,334.6	5,744.1	47.1	53.5	52.08	-2,022.4	1,595.7	727.5	651.1	76.35	9.528	
6,600.0	6,093.1	6,433.9	5,832.2	48.1	54.5	52.71	-2,059.2	1,623.1	736.0	657.5	78.44	9.382	
6,700.0	6,182.7	6,533.4	5,920.4	48.9	55.4	45.43	-2,096.1	1,650.5	744.2	663.6	80.61	9.233	
6,800.0	6,275.7	6,632.8	6,008.5	49.5	56.4	28.00	-2,132.9	1,677.9	751.1	669.5	81.58	9.207	
6,900.0	6,370.3	6,730.2	6,094.9	49.9	57.4	3.83	-2,169.0	1,704.8	756.7	675.5	81.20	9.320	
7,000.0	6,464.9	6,823.7	6,177.8	50.1	58.3	-20.78	-2,203.6	1,730.6	762.3	682.5	79.78	9.554	
7,100.0	6,557.5	6,912.2	6,256.8	50.2	59.0	-39.83	-2,236.7	1,752.8	769.2	691.4	77.88	9.877	
7,200.0	6,646.4	7,004.3	6,340.9	50.2	59.6	-53.09	-2,272.0	1,765.4	778.7	702.7	75.98	10.248	
7,300.0	6,729.8	7,102.9	6,431.7	50.1	60.1	-62.52	-2,310.3	1,765.8	790.5	716.2	74.27	10.644	
7,400.0	6,806.2	7,209.7	6,529.0	49.9	60.4	-69.62	-2,351.6	1,750.9	804.3	731.5	72.86	11.040	
7,500.0	6,873.9	7,326.8	6,631.9	49.7	60.7	-75.25	-2,395.5	1,716.8	819.7	747.8	71.86	11.407	
7,600.0	6,931.7	7,456.5	6,738.0	49.5	60.8	-79.87	-2,441.2	1,658.4	835.7	764.3	71.38	11.708	
7,700.0	6,978.5	7,601.1	6,842.7	49.3	60.7	-83.69	-2,486.6	1,569.9	851.2	779.7	71.57	11.893	
7,800.0	7,013.3	7,762.1	6,937.1	49.2	60.5	-86.75	-2,528.2	1,446.8	864.7	792.1	72.65	11.903	
7,900.0	7,035.6	7,938.6	7,008.7	49.0	60.1	-88.90	-2,560.6	1,289.2	874.6	799.8	74.83	11.688	
8,000.0	7,044.7	8,126.4	7,043.3	49.0	59.6	-89.94	-2,577.8	1,106.0	879.4	801.3	78.15	11.253	
8,100.0	7,045.0	8,251.1	7,045.0	49.0	59.3	-90.00	-2,580.2	981.4	879.7	799.7	80.00	10.997	
8,200.0	7,045.0	8,351.1	7,045.0	49.1	59.0	-90.00	-2,581.6	881.4	879.7	798.1	81.61	10.780	
8,300.0	7,045.0	8,451.1	7,045.0	49.3	58.8	-90.00	-2,583.0	781.4	879.7	796.2	83.57	10.527	
8,400.0	7,045.0	8,551.1	7,045.0	49.6	58.6	-90.00	-2,584.3	681.4	879.7	793.9	85.85	10.248	
8,500.0	7,045.0	8,651.1	7,045.0	50.1	58.4	-90.00	-2,585.7	581.4	879.7	791.3	88.43	9.949	
8,600.0	7,045.0	8,751.1	7,045.0	50.8	58.3	-90.00	-2,587.1	481.5	879.7	788.5	91.27	9.638	
8,700.0	7,045.0	8,851.1	7,045.0	51.6	58.3	-90.00	-2,588.4	381.5	879.7	785.4	94.37	9.322	
8,800.0	7,045.0	8,951.1	7,045.0	52.7	58.3	-90.00	-2,589.8	281.5	879.7	782.0	97.69	9.005	
8,900.0	7,045.0	9,051.1	7,045.0	53.9	58.3	-90.00	-2,591.1	181.5	879.7	778.5	101.22	8.691	
9,000.0	7,045.0	9,151.1	7,045.0	55.2	58.5	-90.00	-2,592.5	81.5	879.7	774.8	104.92	8.384	
9,100.0	7,045.0	9,251.1	7,045.0	56.8	58.9	-90.00	-2,593.9	-18.5	879.7	770.9	108.79	8.086	
9,200.0	7,045.0	9,351.1	7,045.0	58.5	59.4	-90.00	-2,595.2	-118.5	879.7	766.9	112.81	7.799	
9,300.0	7,045.0	9,451.1	7,045.0	60.3	60.3	-90.00	-2,596.6	-218.5	879.7	762.8	116.95	7.522	
9,400.0	7,045.0	9,551.1	7,045.0	62.2	61.5	-90.00	-2,597.9	-318.5	879.7	758.5	121.22	7.257	
9,500.0	7,045.0	9,651.1	7,045.0	64.3	63.0	-90.00	-2,599.3	-418.5	879.7	754.1	125.59	7.005	
9,600.0	7,045.0	9,751.1	7,045.0	66.4	64.7	-90.00	-2,600.7	-518.4	879.7	749.7	130.05	6.764	
9,700.0	7,045.0	9,851.1	7,045.0	68.6	66.7	-90.00	-2,602.0	-618.4	879.7	745.1	134.60	6.536	
9,800.0	7,045.0	9,951.1	7,045.0	70.8	68.8	-90.00	-2,603.4	-718.4	879.7	740.5	139.23	6.319	
9,900.0	7,045.0	10,051.1	7,045.0	73.1	71.1	-90.00	-2,604.7	-818.4	879.7	735.8	143.93	6.112	
10,000.0	7,045.0	10,151.1	7,045.0	75.4	73.4	-90.00	-2,606.1	-918.4	879.7	731.0	148.69	5.917	
10,100.0	7,045.0	10,251.1	7,045.0	77.8	75.8	-90.00	-2,607.5	-1,018.4	879.7	726.2	153.51	5.731	
10,200.0	7,045.0	10,351.1	7,045.0	80.2	78.2	-90.00	-2,608.8	-1,118.4	879.7	721.4	158.37	5.555	
10,300.0	7,045.0	10,451.1	7,045.0	82.7	80.6	-90.00	-2,610.2	-1,218.4	879.7	716.4	163.29	5.387	

CC - Min centre to center distance or convergent point, SF - min separation factor, ES - min ellipse separation

Company:	Synergy Resources	Local Co-ordinate Reference:	Well SRC Weis A-9NHZ
Project:	SEC.4-T4N-R68W	TVD Reference:	WELL @ 5077.0ft (Original Well Elev)
Reference Site:	SRC Kiehn Pad Sec.4-T4N-R68W	MD Reference:	WELL @ 5077.0ft (Original Well Elev)
Site Error:	0.0ft	North Reference:	True
Reference Well:	SRC Weis A-9NHZ	Survey Calculation Method:	Minimum Curvature
Well Error:	0.0ft	Output errors are at	2.00 sigma
Reference Wellbore	Wellbore #1	Database:	Landmark
Reference Design:	Plan #1 (10-2-14)	Offset TVD Reference:	Offset Datum

Offset Design SRC Kiehn Pad Sec.4-T4N-R68W - SRC Weis K-9NHZ - Wellbore #1 - Plan #1 (10-2-14)												Offset Site Error:	0.0 ft
Survey Program: 0-MWD												Offset Well Error:	0.0 ft
Reference		Offset		Semi Major Axis			Distance						Warning
Measured Depth (ft)	Vertical Depth (ft)	Measured Depth (ft)	Vertical Depth (ft)	Reference (ft)	Offset (ft)	Highside Toolface (°)	Offset Wellbore Centre +N/-S (ft)	+E/-W (ft)	Between Centres (ft)	Between Ellipses (ft)	Minimum Separation (ft)	Separation Factor	
10,400.0	7,045.0	10,551.1	7,045.0	85.1	83.1	-90.00	-2,611.6	-1,318.4	879.7	711.5	168.25	5.229	
10,500.0	7,045.0	10,651.1	7,045.0	87.6	85.6	-90.00	-2,612.9	-1,418.4	879.7	706.5	173.25	5.078	
10,600.0	7,045.0	10,751.1	7,045.0	90.1	88.2	-90.00	-2,614.3	-1,518.4	879.7	701.4	178.29	4.934	
10,700.0	7,045.0	10,851.1	7,045.0	92.7	90.7	-90.00	-2,615.6	-1,618.3	879.7	696.4	183.36	4.798	
10,800.0	7,045.0	10,951.1	7,045.0	95.2	93.3	-90.00	-2,617.0	-1,718.3	879.7	691.3	188.46	4.668	
10,900.0	7,045.0	11,051.1	7,045.0	97.8	95.9	-90.00	-2,618.4	-1,818.3	879.7	686.1	193.59	4.544	
11,000.0	7,045.0	11,151.1	7,045.0	100.4	98.5	-90.00	-2,619.7	-1,918.3	879.7	681.0	198.74	4.426	
11,100.0	7,045.0	11,251.1	7,045.0	103.0	101.1	-90.00	-2,621.1	-2,018.3	879.7	675.8	203.92	4.314	
11,200.0	7,045.0	11,351.1	7,045.0	105.6	103.7	-90.00	-2,622.4	-2,118.3	879.7	670.6	209.12	4.207	
11,300.0	7,045.0	11,451.1	7,045.0	108.2	106.3	-90.00	-2,623.8	-2,218.3	879.7	665.4	214.34	4.104	
11,400.0	7,045.0	11,551.1	7,045.0	110.8	109.0	-90.00	-2,625.2	-2,318.3	879.7	660.1	219.58	4.006	
11,500.0	7,045.0	11,651.1	7,045.0	113.4	111.6	-90.00	-2,626.5	-2,418.3	879.7	654.9	224.84	3.913	
11,600.0	7,045.0	11,751.1	7,045.0	116.1	114.3	-90.00	-2,627.9	-2,518.3	879.7	649.6	230.11	3.823	
11,700.0	7,045.0	11,851.1	7,045.0	118.7	116.9	-90.00	-2,629.2	-2,618.3	879.7	644.3	235.40	3.737	
11,800.0	7,045.0	11,951.1	7,045.0	121.4	119.6	-90.00	-2,630.6	-2,718.2	879.7	639.0	240.70	3.655	
11,900.0	7,045.0	12,051.1	7,045.0	124.0	122.3	-90.00	-2,632.0	-2,818.2	879.7	633.7	246.02	3.576	
12,000.0	7,045.0	12,151.1	7,045.0	126.7	125.0	-90.00	-2,633.3	-2,918.2	879.7	628.4	251.35	3.500	
12,075.6	7,045.0	12,226.7	7,045.0	128.7	127.0	-90.00	-2,634.4	-2,993.8	879.7	624.3	255.39	3.445 SF	

Company: Synergy Resources
Project: SEC.4-T4N-R68W
Reference Site: SRC Kiehn Pad Sec.4-T4N-R68W
Site Error: 0.0ft
Reference Well: SRC Weis A-9NHZ
Well Error: 0.0ft
Reference Wellbore: Wellbore #1
Reference Design: Plan #1 (10-2-14)

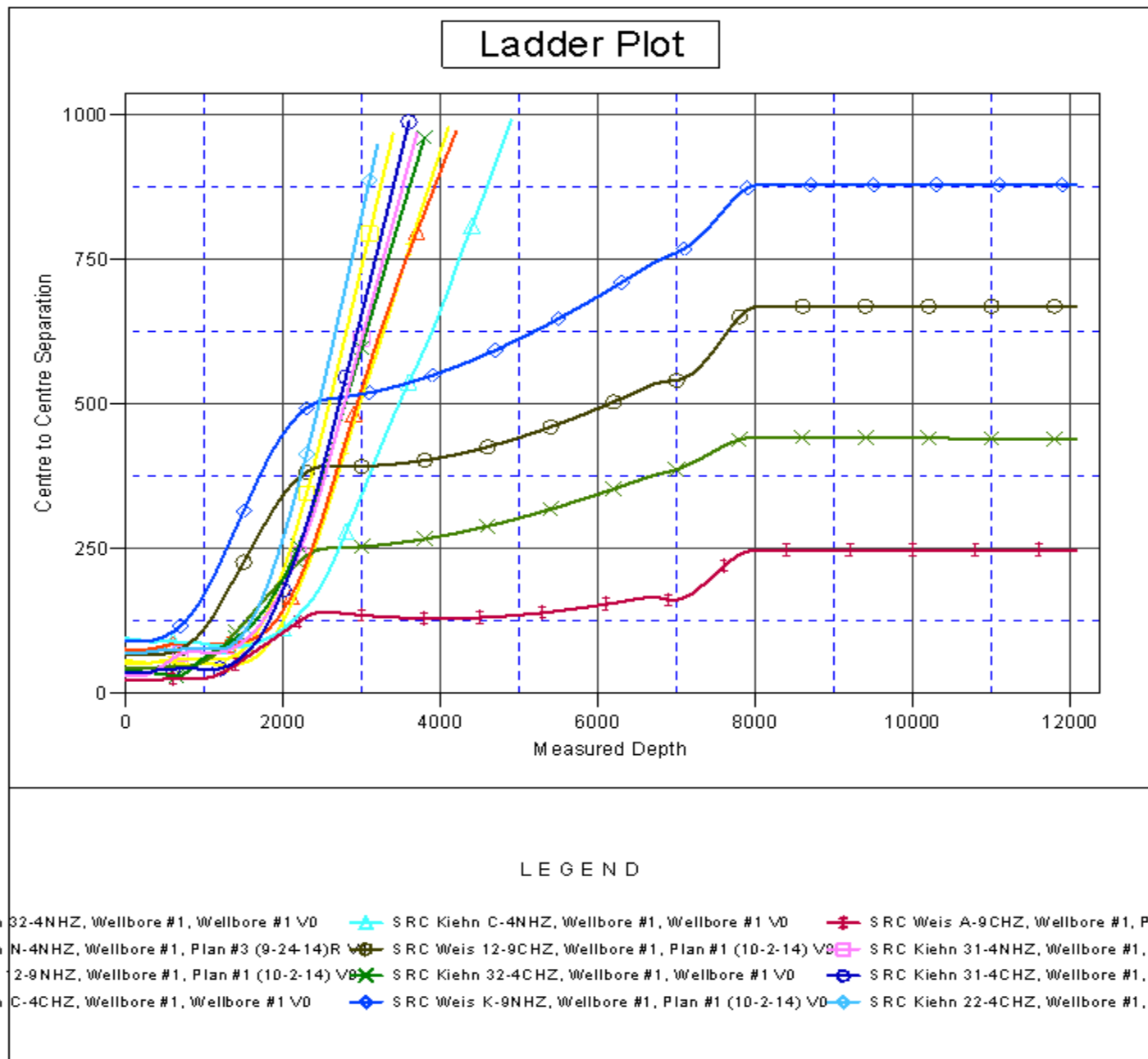
Local Co-ordinate Reference: Well SRC Weis A-9NHZ
TVD Reference: WELL @ 5077.0ft (Original Well Elev)
MD Reference: WELL @ 5077.0ft (Original Well Elev)
North Reference: True
Survey Calculation Method: Minimum Curvature
Output errors are at 2.00 sigma
Database: Landmark
Offset TVD Reference: Offset Datum

Reference Depths are relative to WELL @ 5077.0ft (Original Well Elev) Coordinates are relative to: SRC Weis A-9NHZ

Offset Depths are relative to Offset Datum

Coordinate System is US State Plane 1983, Colorado Northern Zone

Grid Convergence at Surface is: 0.32°



Company:	Synergy Resources	Local Co-ordinate Reference:	Well SRC Weis A-9NHZ
Project:	SEC.4-T4N-R68W	TVD Reference:	WELL @ 5077.0ft (Original Well Elev)
Reference Site:	SRC Kiehn Pad Sec.4-T4N-R68W	MD Reference:	WELL @ 5077.0ft (Original Well Elev)
Site Error:	0.0ft	North Reference:	True
Reference Well:	SRC Weis A-9NHZ	Survey Calculation Method:	Minimum Curvature
Well Error:	0.0ft	Output errors are at	2.00 sigma
Reference Wellbore	Wellbore #1	Database:	Landmark
Reference Design:	Plan #1 (10-2-14)	Offset TVD Reference:	Offset Datum

Reference Depths are relative to WELL @ 5077.0ft (Original Well Elev) Coordinates are relative to: SRC Weis A-9NHZ
 Offset Depths are relative to Offset Datum Coordinate System is US State Plane 1983, Colorado Northern Zone
 Central Meridian is -105.500000 ° Grid Convergence at Surface is: 0.32°

