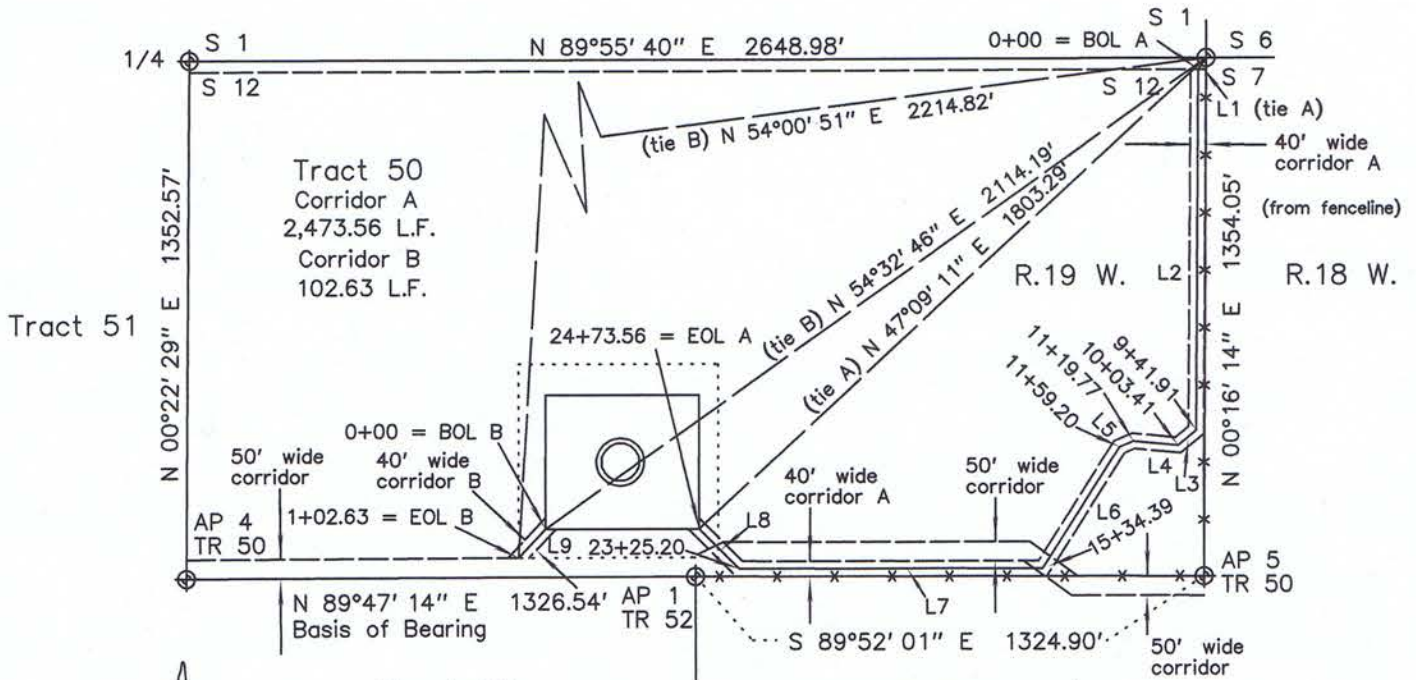


NOTICE:

According to Colorado law you must commence any legal action based upon any defect in this survey within three years after you first discover such defect. In no event may any action based upon any defect in this survey be commenced more than ten years from the date of certification shown hereon.

T.38 N.



Tract 52
 Basis of Bearing:
 N 89°47' 14" E between the found AP 4 of Tract 50 and AP 1 of Tract 52, as shown.
 Assumed from GPS True North.

LINE DESCRIPTION TABLE

Corridor A	
L1	N 33°53' 40" E 36.17' (tie A)
L2	S 00°22' 46" W 941.91'
L3	S 50°25' 48" W 61.50'
L4	N 84°40' 21" W 116.36'
L5	S 66°34' 13" W 39.43'
L6	S 32°18' 47" W 375.19'
L7	N 89°52' 01" W 790.81'
L8	N 45°00' 00" W 145.36'
Corridor B	
L9	S 42°58' 59" W 102.63'

LEGAL DESCRIPTION - 40 Foot Wide Corridor A

A 40 foot wide corridor contained in Tract 50 of Section 12, T.38 N., R.19 W., NMPM, Montezuma County, Colorado, lying 20 feet each side of the following centerline description: Beginning at a point on the South right-of-way line of CR BB, from which the NE Corner of said Section 12 bears N 33°53' 40" E a distance of 36.17 feet; thence S 00°22' 46" W a distance of 941.91 feet parallel to a fenceline; thence S 50°25' 48" W a distance of 61.50 feet; thence N 84°40' 21" W a distance of 116.36 feet; thence S 66°34' 13" W a distance of 39.43 feet; thence S 32°18' 47" W a distance of 375.19 feet; thence N 89°52' 01" W a distance of 790.81 feet parallel to the South line of said Tract 50; thence N 45°00' 00" W a distance of 148.36 feet to a point on the proposed CX-7 well pad and the end of said 40 foot wide Corridor A, from which point the NE Corner of said Section 12 bears N 47°09' 11" E a distance of 1803.29 feet. SUBJECT TO all easements of record or prescriptive.

LEGAL DESCRIPTION - 40 Foot Wide Corridor B

A 40 foot wide corridor contained in Tract 50 of Section 12, T.38 N., R.19 W., NMPM, Montezuma County, Colorado, lying 20 feet each side of the following centerline description: Beginning at a point on the proposed CX-7 well pad, from which the NE Corner of said Section 12 bears N 54°32' 46" E a distance of 2114.19 feet; thence S 42°58' 59" W a distance of 102.63 feet to a point on the North line of a 50 foot wide corridor and the end of said 40 foot wide Corridor B, from which point the NE Corner of said Section 12 bears N 54°00' 51" E a distance of 2214.82 feet. SUBJECT TO all easements of record or prescriptive.



KINDER MORGAN CO2 COMPANY, LP

Proposed CX-7 40 Foot Wide Corridor A and B -

Bessie White
 Tract 50 in Section 12,
 T.38 N., R.19 W., NMPM,
 Montezuma County, Colorado

KNOW ALL MEN BY THESE PRESENTS that I, GERALD G. HUDDLESTON, do hereby certify that this plat was prepared from field notes of an actual survey made by me or under my supervision and that the same is true and accurate to the best of my knowledge and belief.

28 September 2014

HUDDLESTON LAND SURVEYING
 P.O. DRAWER KK / CORTEZ, CO 81321 / (970) 565-3330