

# Synergy Resources

Well Name: **SRC Weis K-9NHZ**

Surface Location: SRC Kiehn Pad Sec.4-T4N-R68W

North American Datum 1983, US State Plane 1983, Colorado Northern Zone

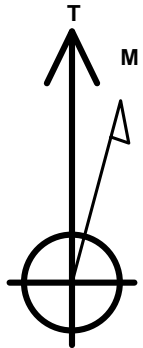
Ground Elevation: 5064.0

+N/-S	+E/-W	Northing	Easting	Latitude	Longitude	Slot
0.0	0.0	1365531.50	3137974.21	40.335728	-105.005066	

RKB - 13' WELL @ 5077.0ft (RKB - 13')

## WELLBORE TARGET DETAILS

Name	TVD	+N/-S	+E/-W	Shape
SHL 171'FSL & 1719'FEL, Sec.4	1.0	0.0	0.0	Point
BHL 2410'FNL & 460'FWL, Sec.9	7045.0	-2635.9	-3092.4	Point



Azimuths to True North  
Magnetic North: 8.54°

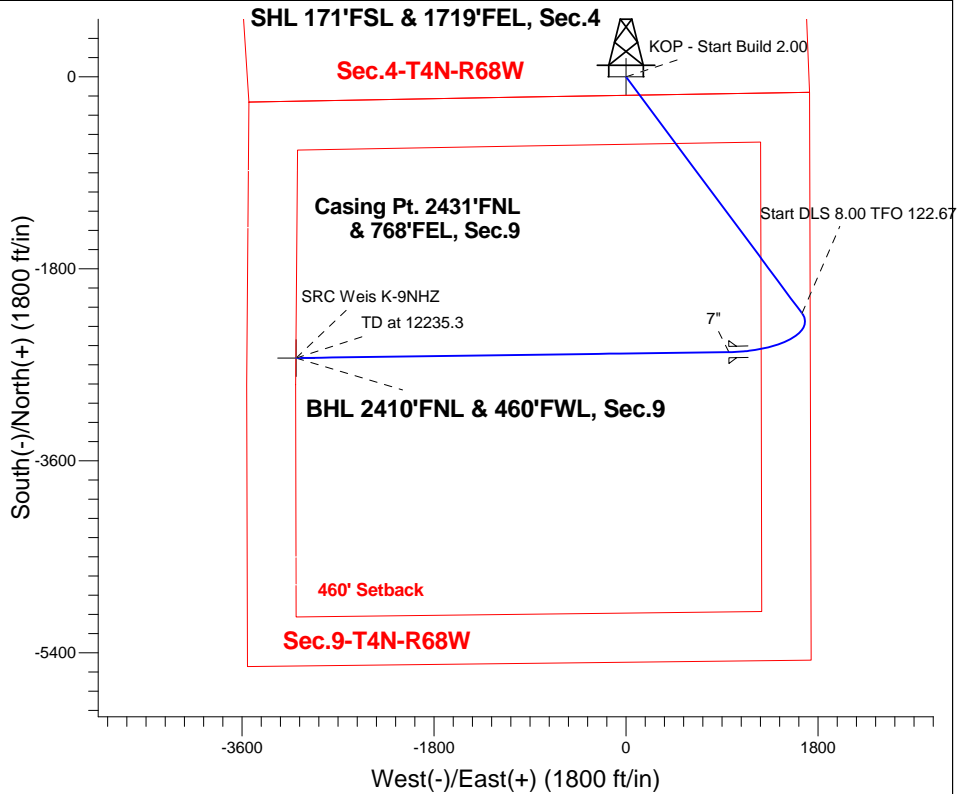
Magnetic Field  
Strength: 52722.9snT  
Dip Angle: 66.85°  
Date: 10/2/2014  
Model: IGRF2010

## ANNOTATIONS

TVD	MD	Annotation
200.0	200.0	KOP - Start Build 2.00
6206.6	6856.2	Start DLS 8.00 TFO 122.67
7045.0	12235.3	TD at 12235.3

SRC Kiehn Pad Sec.4-T4N-R68W  
SRC Weis K-9NHZ  
Plan #1 (10-2-14)  
17:03, October 03 2014

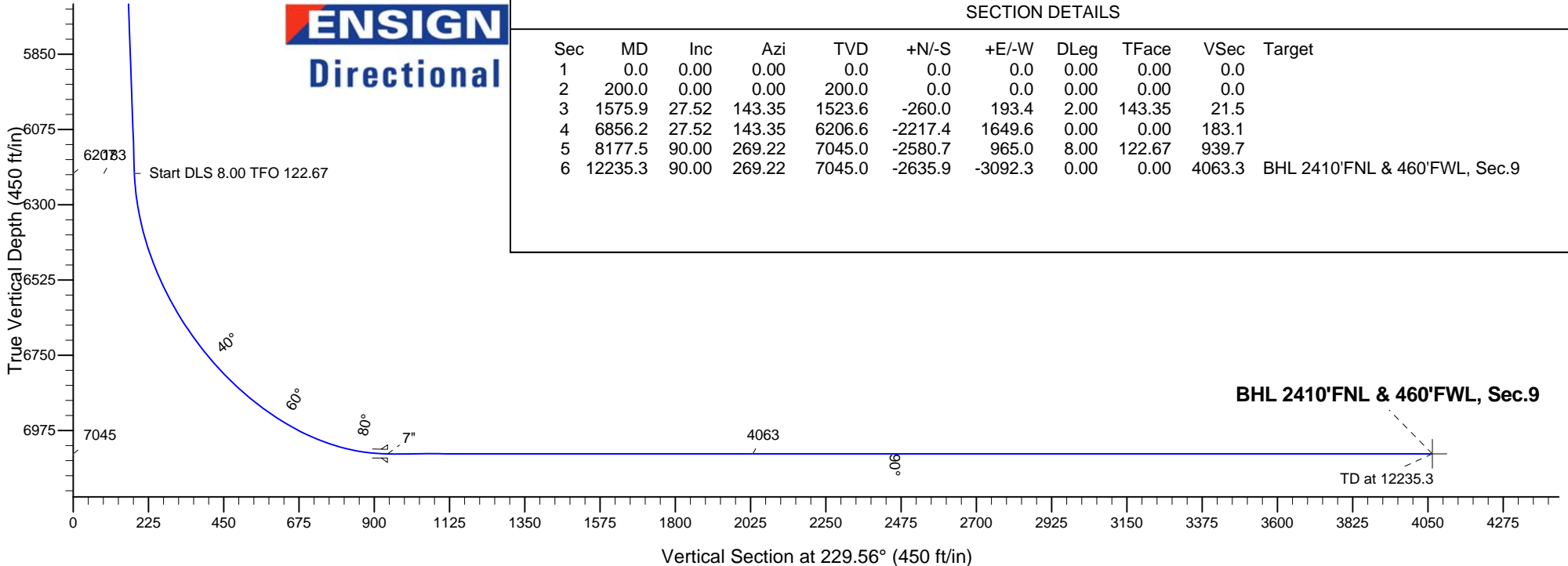
South(-)/North(+) (1800 ft/in)



**ENSIGN**  
Directional

## SECTION DETAILS

Sec	MD	Inc	Azi	TVD	+N/-S	+E/-W	DLeg	TFace	VSec	Target
1	0.0	0.00	0.00	0.0	0.0	0.0	0.00	0.00	0.0	
2	200.0	0.00	0.00	200.0	0.0	0.0	0.00	0.00	0.0	
3	1575.9	27.52	143.35	1523.6	-260.0	193.4	2.00	143.35	21.5	
4	6856.2	27.52	143.35	6206.6	-2217.4	1649.6	0.00	0.00	183.1	
5	8177.5	90.00	269.22	7045.0	-2580.7	965.0	8.00	122.67	939.7	
6	12235.3	90.00	269.22	7045.0	-2635.9	-3092.3	0.00	0.00	4063.3	BHL 2410'FNL & 460'FWL, Sec.9





## **Synergy Resources**

**SEC.4-T4N-R68W**

**SRC Kiehn Pad Sec.4-T4N-R68W**

**SRC Weis K-9NHZ**

**Wellbore #1**

**Plan: Plan #1 (10-2-14)**

## **Standard Planning Report**

**03 October, 2014**

Plan Sections										
Measured Depth (ft)	Inclination (°)	Azimuth (°)	Vertical Depth (ft)	+N/-S (ft)	+E/-W (ft)	Dogleg Rate (°/100ft)	Build Rate (°/100ft)	Turn Rate (°/100ft)	TFO (°)	Target
0.0	0.00	0.00	0.0	0.0	0.0	0.00	0.00	0.00	0.00	
200.0	0.00	0.00	200.0	0.0	0.0	0.00	0.00	0.00	0.00	
1,575.9	27.52	143.35	1,523.6	-260.0	193.4	2.00	2.00	0.00	143.35	
6,856.2	27.52	143.35	6,206.6	-2,217.4	1,649.6	0.00	0.00	0.00	0.00	
8,177.5	90.00	269.22	7,045.0	-2,580.7	965.0	8.00	4.73	9.53	122.67	
12,235.3	90.00	269.22	7,045.0	-2,635.9	-3,092.3	0.00	0.00	0.00	0.00	BHL 2410'FNL & 46

<b>Database:</b>	Landmark	<b>Local Co-ordinate Reference:</b>	Well SRC Weis K-9NHZ
<b>Company:</b>	Synergy Resources	<b>TVD Reference:</b>	WELL @ 5077.0ft (RKB - 13')
<b>Project:</b>	SEC.4-T4N-R68W	<b>MD Reference:</b>	WELL @ 5077.0ft (RKB - 13')
<b>Site:</b>	SRC Kiehn Pad Sec.4-T4N-R68W	<b>North Reference:</b>	True
<b>Well:</b>	SRC Weis K-9NHZ	<b>Survey Calculation Method:</b>	Minimum Curvature
<b>Wellbore:</b>	Wellbore #1		
<b>Design:</b>	Plan #1 (10-2-14)		

Planned Survey									
Measured Depth (ft)	Inclination (°)	Azimuth (°)	Vertical Depth (ft)	+N/-S (ft)	+E/-W (ft)	Vertical Section (ft)	Dogleg Rate (°/100ft)	Build Rate (°/100ft)	Turn Rate (°/100ft)
0.0	0.00	0.00	0.0	0.0	0.0	0.0	0.00	0.00	0.00
100.0	0.00	0.00	100.0	0.0	0.0	0.0	0.00	0.00	0.00
200.0	0.00	0.00	200.0	0.0	0.0	0.0	0.00	0.00	0.00
<b>KOP - Start Build 2.00</b>									
300.0	2.00	143.35	300.0	-1.4	1.0	0.1	2.00	2.00	0.00
400.0	4.00	143.35	399.8	-5.6	4.2	0.5	2.00	2.00	0.00
500.0	6.00	143.35	499.5	-12.6	9.4	1.0	2.00	2.00	0.00
600.0	8.00	143.35	598.7	-22.4	16.6	1.8	2.00	2.00	0.00
700.0	10.00	143.35	697.5	-34.9	26.0	2.9	2.00	2.00	0.00
800.0	12.00	143.35	795.6	-50.2	37.4	4.1	2.00	2.00	0.00
900.0	14.00	143.35	893.1	-68.3	50.8	5.6	2.00	2.00	0.00
1,000.0	16.00	143.35	989.6	-89.0	66.2	7.4	2.00	2.00	0.00
1,100.0	18.00	143.35	1,085.3	-112.5	83.7	9.3	2.00	2.00	0.00
1,200.0	20.00	143.35	1,179.8	-138.6	103.1	11.4	2.00	2.00	0.00
1,300.0	22.00	143.35	1,273.2	-167.4	124.5	13.8	2.00	2.00	0.00
1,400.0	24.00	143.35	1,365.2	-198.7	147.8	16.4	2.00	2.00	0.00
1,500.0	26.00	143.35	1,455.8	-232.6	173.1	19.2	2.00	2.00	0.00
1,575.9	27.52	143.35	1,523.6	-260.0	193.4	21.5	2.00	2.00	0.00
1,600.0	27.52	143.35	1,545.0	-269.0	200.1	22.2	0.00	0.00	0.00
1,700.0	27.52	143.35	1,633.7	-306.0	227.7	25.3	0.00	0.00	0.00
1,800.0	27.52	143.35	1,722.4	-343.1	255.2	28.3	0.00	0.00	0.00
1,900.0	27.52	143.35	1,811.0	-380.2	282.8	31.4	0.00	0.00	0.00
2,000.0	27.52	143.35	1,899.7	-417.2	310.4	34.4	0.00	0.00	0.00
2,100.0	27.52	143.35	1,988.4	-454.3	338.0	37.5	0.00	0.00	0.00
2,200.0	27.52	143.35	2,077.1	-491.4	365.6	40.6	0.00	0.00	0.00
2,300.0	27.52	143.35	2,165.8	-528.5	393.1	43.6	0.00	0.00	0.00
2,400.0	27.52	143.35	2,254.5	-565.5	420.7	46.7	0.00	0.00	0.00
2,500.0	27.52	143.35	2,343.2	-602.6	448.3	49.7	0.00	0.00	0.00
2,600.0	27.52	143.35	2,431.9	-639.7	475.9	52.8	0.00	0.00	0.00
2,700.0	27.52	143.35	2,520.5	-676.7	503.4	55.9	0.00	0.00	0.00
2,800.0	27.52	143.35	2,609.2	-713.8	531.0	58.9	0.00	0.00	0.00
2,900.0	27.52	143.35	2,697.9	-750.9	558.6	62.0	0.00	0.00	0.00
3,000.0	27.52	143.35	2,786.6	-787.9	586.2	65.1	0.00	0.00	0.00
3,100.0	27.52	143.35	2,875.3	-825.0	613.7	68.1	0.00	0.00	0.00
3,200.0	27.52	143.35	2,964.0	-862.1	641.3	71.2	0.00	0.00	0.00
3,300.0	27.52	143.35	3,052.7	-899.1	668.9	74.2	0.00	0.00	0.00
3,400.0	27.52	143.35	3,141.4	-936.2	696.5	77.3	0.00	0.00	0.00
3,500.0	27.52	143.35	3,230.0	-973.3	724.1	80.4	0.00	0.00	0.00
3,600.0	27.52	143.35	3,318.7	-1,010.4	751.6	83.4	0.00	0.00	0.00
3,700.0	27.52	143.35	3,407.4	-1,047.4	779.2	86.5	0.00	0.00	0.00
3,800.0	27.52	143.35	3,496.1	-1,084.5	806.8	89.5	0.00	0.00	0.00
3,900.0	27.52	143.35	3,584.8	-1,121.6	834.4	92.6	0.00	0.00	0.00
4,000.0	27.52	143.35	3,673.5	-1,158.6	861.9	95.7	0.00	0.00	0.00
4,100.0	27.52	143.35	3,762.2	-1,195.7	889.5	98.7	0.00	0.00	0.00
4,200.0	27.52	143.35	3,850.9	-1,232.8	917.1	101.8	0.00	0.00	0.00
4,300.0	27.52	143.35	3,939.5	-1,269.8	944.7	104.8	0.00	0.00	0.00
4,400.0	27.52	143.35	4,028.2	-1,306.9	972.2	107.9	0.00	0.00	0.00
4,500.0	27.52	143.35	4,116.9	-1,344.0	999.8	111.0	0.00	0.00	0.00
4,600.0	27.52	143.35	4,205.6	-1,381.0	1,027.4	114.0	0.00	0.00	0.00
4,700.0	27.52	143.35	4,294.3	-1,418.1	1,055.0	117.1	0.00	0.00	0.00
4,800.0	27.52	143.35	4,383.0	-1,455.2	1,082.5	120.1	0.00	0.00	0.00
4,900.0	27.52	143.35	4,471.7	-1,492.2	1,110.1	123.2	0.00	0.00	0.00
5,000.0	27.52	143.35	4,560.4	-1,529.3	1,137.7	126.3	0.00	0.00	0.00
5,100.0	27.52	143.35	4,649.0	-1,566.4	1,165.3	129.3	0.00	0.00	0.00

<b>Database:</b>	Landmark	<b>Local Co-ordinate Reference:</b>	Well SRC Weis K-9NHZ
<b>Company:</b>	Synergy Resources	<b>TVD Reference:</b>	WELL @ 5077.0ft (RKB - 13')
<b>Project:</b>	SEC.4-T4N-R68W	<b>MD Reference:</b>	WELL @ 5077.0ft (RKB - 13')
<b>Site:</b>	SRC Kiehn Pad Sec.4-T4N-R68W	<b>North Reference:</b>	True
<b>Well:</b>	SRC Weis K-9NHZ	<b>Survey Calculation Method:</b>	Minimum Curvature
<b>Wellbore:</b>	Wellbore #1		
<b>Design:</b>	Plan #1 (10-2-14)		

Planned Survey									
Measured Depth (ft)	Inclination (°)	Azimuth (°)	Vertical Depth (ft)	+N/-S (ft)	+E/-W (ft)	Vertical Section (ft)	Dogleg Rate (°/100ft)	Build Rate (°/100ft)	Turn Rate (°/100ft)
5,200.0	27.52	143.35	4,737.7	-1,603.5	1,192.9	132.4	0.00	0.00	0.00
5,300.0	27.52	143.35	4,826.4	-1,640.5	1,220.4	135.4	0.00	0.00	0.00
5,400.0	27.52	143.35	4,915.1	-1,677.6	1,248.0	138.5	0.00	0.00	0.00
5,500.0	27.52	143.35	5,003.8	-1,714.7	1,275.6	141.6	0.00	0.00	0.00
5,600.0	27.52	143.35	5,092.5	-1,751.7	1,303.2	144.6	0.00	0.00	0.00
5,700.0	27.52	143.35	5,181.2	-1,788.8	1,330.7	147.7	0.00	0.00	0.00
5,800.0	27.52	143.35	5,269.9	-1,825.9	1,358.3	150.7	0.00	0.00	0.00
5,900.0	27.52	143.35	5,358.5	-1,862.9	1,385.9	153.8	0.00	0.00	0.00
6,000.0	27.52	143.35	5,447.2	-1,900.0	1,413.5	156.9	0.00	0.00	0.00
6,100.0	27.52	143.35	5,535.9	-1,937.1	1,441.0	159.9	0.00	0.00	0.00
6,200.0	27.52	143.35	5,624.6	-1,974.1	1,468.6	163.0	0.00	0.00	0.00
6,300.0	27.52	143.35	5,713.3	-2,011.2	1,496.2	166.0	0.00	0.00	0.00
6,400.0	27.52	143.35	5,802.0	-2,048.3	1,523.8	169.1	0.00	0.00	0.00
6,500.0	27.52	143.35	5,890.7	-2,085.3	1,551.3	172.2	0.00	0.00	0.00
6,600.0	27.52	143.35	5,979.3	-2,122.4	1,578.9	175.2	0.00	0.00	0.00
6,700.0	27.52	143.35	6,068.0	-2,159.5	1,606.5	178.3	0.00	0.00	0.00
6,800.0	27.52	143.35	6,156.7	-2,196.6	1,634.1	181.3	0.00	0.00	0.00
6,856.2	27.52	143.35	6,206.6	-2,217.4	1,649.6	183.1	0.00	0.00	0.00
Start DLS 8.00 TFO 122.67									
6,900.0	25.78	150.14	6,245.7	-2,233.8	1,660.4	185.5	8.00	-3.96	15.50
7,000.0	23.25	168.52	6,336.8	-2,272.0	1,675.1	199.1	8.00	-2.53	18.38
7,100.0	23.18	188.90	6,428.9	-2,310.9	1,676.0	223.6	8.00	-0.07	20.38
7,200.0	25.60	207.46	6,520.1	-2,349.6	1,663.0	258.6	8.00	2.42	18.55
7,300.0	29.91	222.00	6,608.7	-2,387.3	1,636.3	303.4	8.00	4.31	14.55
7,400.0	35.42	232.80	6,692.9	-2,423.4	1,596.5	357.1	8.00	5.51	10.80
7,500.0	41.65	240.88	6,771.1	-2,457.2	1,544.3	418.8	8.00	6.23	8.08
7,600.0	48.32	247.14	6,841.8	-2,487.9	1,480.7	487.0	8.00	6.67	6.26
7,700.0	55.27	252.20	6,903.7	-2,515.0	1,407.1	560.7	8.00	6.95	5.06
7,800.0	62.39	256.46	6,955.4	-2,538.0	1,324.7	638.2	8.00	7.12	4.26
7,900.0	69.63	260.20	6,996.1	-2,556.4	1,235.3	718.2	8.00	7.24	3.74
8,000.0	76.94	263.60	7,024.8	-2,569.8	1,140.6	799.0	8.00	7.31	3.40
8,100.0	84.29	266.80	7,041.1	-2,578.0	1,042.4	879.1	8.00	7.35	3.20
8,177.5	90.00	269.22	7,045.0	-2,580.7	965.0	939.7	8.00	7.37	3.12
7"									
8,200.0	90.00	269.22	7,045.0	-2,581.0	942.5	957.0	0.01	0.01	0.01
8,300.0	90.00	269.22	7,045.0	-2,582.4	842.6	1,034.0	0.00	0.00	0.00
8,400.0	90.00	269.22	7,045.0	-2,583.7	742.6	1,111.0	0.00	0.00	0.00
8,500.0	90.00	269.22	7,045.0	-2,585.1	642.6	1,188.0	0.00	0.00	0.00
8,600.0	90.00	269.22	7,045.0	-2,586.5	542.6	1,264.9	0.00	0.00	0.00
8,700.0	90.00	269.22	7,045.0	-2,587.8	442.6	1,341.9	0.00	0.00	0.00
8,800.0	90.00	269.22	7,045.0	-2,589.2	342.6	1,418.9	0.00	0.00	0.00
8,900.0	90.00	269.22	7,045.0	-2,590.5	242.6	1,495.9	0.00	0.00	0.00
9,000.0	90.00	269.22	7,045.0	-2,591.9	142.6	1,572.9	0.00	0.00	0.00
9,100.0	90.00	269.22	7,045.0	-2,593.3	42.6	1,649.8	0.00	0.00	0.00
9,200.0	90.00	269.22	7,045.0	-2,594.6	-57.4	1,726.8	0.00	0.00	0.00
9,300.0	90.00	269.22	7,045.0	-2,596.0	-157.4	1,803.8	0.00	0.00	0.00
9,400.0	90.00	269.22	7,045.0	-2,597.3	-257.3	1,880.8	0.00	0.00	0.00
9,500.0	90.00	269.22	7,045.0	-2,598.7	-357.3	1,957.8	0.00	0.00	0.00
9,600.0	90.00	269.22	7,045.0	-2,600.1	-457.3	2,034.7	0.00	0.00	0.00
9,700.0	90.00	269.22	7,045.0	-2,601.4	-557.3	2,111.7	0.00	0.00	0.00
9,800.0	90.00	269.22	7,045.0	-2,602.8	-657.3	2,188.7	0.00	0.00	0.00
9,900.0	90.00	269.22	7,045.0	-2,604.1	-757.3	2,265.7	0.00	0.00	0.00
10,000.0	90.00	269.22	7,045.0	-2,605.5	-857.3	2,342.7	0.00	0.00	0.00
10,100.0	90.00	269.22	7,045.0	-2,606.9	-957.3	2,419.6	0.00	0.00	0.00

<b>Database:</b>	Landmark	<b>Local Co-ordinate Reference:</b>	Well SRC Weis K-9NHZ
<b>Company:</b>	Synergy Resources	<b>TVD Reference:</b>	WELL @ 5077.0ft (RKB - 13')
<b>Project:</b>	SEC.4-T4N-R68W	<b>MD Reference:</b>	WELL @ 5077.0ft (RKB - 13')
<b>Site:</b>	SRC Kiehn Pad Sec.4-T4N-R68W	<b>North Reference:</b>	True
<b>Well:</b>	SRC Weis K-9NHZ	<b>Survey Calculation Method:</b>	Minimum Curvature
<b>Wellbore:</b>	Wellbore #1		
<b>Design:</b>	Plan #1 (10-2-14)		

Planned Survey									
Measured Depth (ft)	Inclination (°)	Azimuth (°)	Vertical Depth (ft)	+N/-S (ft)	+E/-W (ft)	Vertical Section (ft)	Dogleg Rate (°/100ft)	Build Rate (°/100ft)	Turn Rate (°/100ft)
10,200.0	90.00	269.22	7,045.0	-2,608.2	-1,057.3	2,496.6	0.00	0.00	0.00
10,300.0	90.00	269.22	7,045.0	-2,609.6	-1,157.3	2,573.6	0.00	0.00	0.00
10,400.0	90.00	269.22	7,045.0	-2,611.0	-1,257.3	2,650.6	0.00	0.00	0.00
10,500.0	90.00	269.22	7,045.0	-2,612.3	-1,357.2	2,727.5	0.00	0.00	0.00
10,600.0	90.00	269.22	7,045.0	-2,613.7	-1,457.2	2,804.5	0.00	0.00	0.00
10,700.0	90.00	269.22	7,045.0	-2,615.0	-1,557.2	2,881.5	0.00	0.00	0.00
10,800.0	90.00	269.22	7,045.0	-2,616.4	-1,657.2	2,958.5	0.00	0.00	0.00
10,900.0	90.00	269.22	7,045.0	-2,617.8	-1,757.2	3,035.5	0.00	0.00	0.00
11,000.0	90.00	269.22	7,045.0	-2,619.1	-1,857.2	3,112.4	0.00	0.00	0.00
11,100.0	90.00	269.22	7,045.0	-2,620.5	-1,957.2	3,189.4	0.00	0.00	0.00
11,200.0	90.00	269.22	7,045.0	-2,621.8	-2,057.2	3,266.4	0.00	0.00	0.00
11,300.0	90.00	269.22	7,045.0	-2,623.2	-2,157.2	3,343.4	0.00	0.00	0.00
11,400.0	90.00	269.22	7,045.0	-2,624.6	-2,257.2	3,420.4	0.00	0.00	0.00
11,500.0	90.00	269.22	7,045.0	-2,625.9	-2,357.2	3,497.3	0.00	0.00	0.00
11,600.0	90.00	269.22	7,045.0	-2,627.3	-2,457.1	3,574.3	0.00	0.00	0.00
11,700.0	90.00	269.22	7,045.0	-2,628.7	-2,557.1	3,651.3	0.00	0.00	0.00
11,800.0	90.00	269.22	7,045.0	-2,630.0	-2,657.1	3,728.3	0.00	0.00	0.00
11,900.0	90.00	269.22	7,045.0	-2,631.4	-2,757.1	3,805.3	0.00	0.00	0.00
12,000.0	90.00	269.22	7,045.0	-2,632.7	-2,857.1	3,882.2	0.00	0.00	0.00
12,100.0	90.00	269.22	7,045.0	-2,634.1	-2,957.1	3,959.2	0.00	0.00	0.00
12,200.0	90.00	269.22	7,045.0	-2,635.5	-3,057.1	4,036.2	0.00	0.00	0.00
12,235.3	90.00	269.22	7,045.0	-2,635.9	-3,092.3	4,063.3	0.00	0.00	0.00

Targets									
Target Name	Dip Angle (°)	Dip Dir. (°)	TVD (ft)	+N/-S (ft)	+E/-W (ft)	Northing (ft)	Easting (ft)	Latitude	Longitude
- hit/miss target									
- Shape									
SHL 171'FSL & 1719'	0.00	0.00	1.0	0.0	0.0	1,365,531.51	3,137,974.21	40.335728	-105.005066
- plan hits target center									
- Point									
BHL 2410'FNL & 460'	0.00	0.00	7,045.0	-2,635.9	-3,092.4	1,362,878.47	3,134,896.76	40.328492	-105.016157
- plan hits target center									
- Point									

Casing Points					
Measured Depth (ft)	Vertical Depth (ft)	Name		Casing Diameter (")	Hole Diameter (")
8,177.5	7,045.0	7"		7	7-1/2

Plan Annotations				
Measured Depth (ft)	Vertical Depth (ft)	Local Coordinates		Comment
		+N/-S (ft)	+E/-W (ft)	
200.0	200.0	0.0	0.0	KOP - Start Build 2.00
6,856.2	6,206.6	-260.0	193.4	Start DLS 8.00 TFO 122.67
12,235.3	7,045.0	-2,217.4	1,649.6	TD at 12235.3



# **Synergy Resources**

**SEC.4-T4N-R68W**

**SRC Kiehn Pad Sec.4-T4N-R68W**

**SRC Weis K-9NHZ**

**Wellbore #1**

**Plan #1 (10-2-14)**

## **Anticollision Report**

**03 October, 2014**





<b>Company:</b>	Synergy Resources	<b>Local Co-ordinate Reference:</b>	Well SRC Weis K-9NHZ
<b>Project:</b>	SEC.4-T4N-R68W	<b>TVD Reference:</b>	WELL @ 5077.0ft (RKB - 13')
<b>Reference Site:</b>	SRC Kiehn Pad Sec.4-T4N-R68W	<b>MD Reference:</b>	WELL @ 5077.0ft (RKB - 13')
<b>Site Error:</b>	0.0ft	<b>North Reference:</b>	True
<b>Reference Well:</b>	SRC Weis K-9NHZ	<b>Survey Calculation Method:</b>	Minimum Curvature
<b>Well Error:</b>	0.0ft	<b>Output errors are at</b>	2.00 sigma
<b>Reference Wellbore</b>	Wellbore #1	<b>Database:</b>	Landmark
<b>Reference Design:</b>	Plan #1 (10-2-14)	<b>Offset TVD Reference:</b>	Offset Datum

Offset Design												SRC Kiehn Pad Sec.4-T4N-R68W - SRC Kiehn 22-4CHZ - Wellbore #1 - Plan #2 (4-25-14)		Offset Site Error:		0.0 ft	
Survey Program: 0-MWD														Offset Well Error:		0.0 ft	
Reference		Offset		Semi Major Axis			Distance							Warning			
Measured Depth	Vertical Depth	Measured Depth	Vertical Depth	Reference	Offset	Highside Toolface	Offset Wellbore Centre		Between Centres	Between Ellipses	Minimum Separation	Separation Factor					
(ft)	(ft)	(ft)	(ft)	(ft)	(ft)	(°)	+N/-S (ft)	+E/-W (ft)	(ft)	(ft)	(ft)						
300.0	300.0	300.0	300.0	0.5	0.6	137.19	27.7	-155.0	158.7	157.6	1.11	143.458					
400.0	399.8	399.8	399.8	0.8	0.8	138.39	27.7	-155.0	162.6	161.1	1.54	105.409					
500.0	499.5	499.5	499.5	1.0	1.0	140.26	27.7	-155.0	169.2	167.2	2.00	84.576					
600.0	598.7	598.7	598.7	1.3	1.2	142.63	27.7	-155.0	178.8	176.3	2.48	72.164					
700.0	697.5	697.5	697.5	1.6	1.5	145.32	27.7	-155.0	191.5	188.5	2.97	64.498					
800.0	795.6	795.6	795.6	2.0	1.7	148.13	27.7	-155.0	207.6	204.1	3.47	59.789					
900.0	893.1	893.1	893.1	2.5	1.9	150.92	27.7	-155.0	227.1	223.1	3.98	57.056					
1,000.0	989.6	989.6	989.6	3.0	2.1	153.57	27.7	-155.0	250.1	245.7	4.49	55.703					
1,100.0	1,085.3	1,085.3	1,085.3	3.6	2.3	156.02	27.7	-155.0	276.8	271.8	5.00	55.344 SF					
1,200.0	1,179.8	1,179.8	1,179.8	4.2	2.5	158.24	27.7	-155.0	307.1	301.5	5.51	55.715					
1,300.0	1,273.2	1,267.4	1,267.4	4.9	2.7	159.98	27.6	-155.8	341.5	335.5	6.01	56.842					
1,400.0	1,365.2	1,351.1	1,351.1	5.7	2.9	161.19	27.1	-158.9	381.2	374.7	6.51	58.551					
1,500.0	1,455.8	1,432.3	1,432.0	6.6	3.1	161.98	26.2	-164.3	425.9	418.9	7.03	60.619					
1,600.0	1,545.0	1,510.6	1,510.0	7.5	3.2	162.52	25.1	-171.6	475.2	467.7	7.56	62.827					
1,700.0	1,633.7	1,587.0	1,585.8	8.4	3.4	163.01	23.6	-180.8	527.1	518.9	8.14	64.766					
1,800.0	1,722.4	1,661.8	1,659.8	9.4	3.6	163.24	21.9	-191.7	580.4	571.7	8.73	66.488					
1,900.0	1,811.0	1,735.0	1,731.9	10.3	3.8	163.28	19.9	-204.2	635.3	625.9	9.34	68.017					
2,000.0	1,899.7	1,806.6	1,802.1	11.3	4.0	163.18	17.7	-218.2	691.5	681.5	9.97	69.373					
2,100.0	1,988.4	1,882.6	1,876.2	12.3	4.3	162.97	15.1	-234.7	748.9	738.3	10.63	70.449					
2,200.0	2,077.1	1,964.3	1,955.9	13.2	4.6	162.76	12.3	-252.6	806.5	795.2	11.31	71.304					
2,300.0	2,165.8	2,046.0	2,035.5	14.2	4.9	162.58	9.5	-270.5	864.2	852.2	12.00	72.004					
2,400.0	2,254.5	2,127.7	2,115.2	15.2	5.2	162.43	6.6	-288.4	921.8	909.1	12.71	72.551					
2,500.0	2,343.2	2,209.4	2,194.9	16.1	5.6	162.29	3.8	-306.4	979.4	966.0	13.41	73.020					

<b>Company:</b>	Synergy Resources	<b>Local Co-ordinate Reference:</b>	Well SRC Weis K-9NHZ
<b>Project:</b>	SEC.4-T4N-R68W	<b>TVD Reference:</b>	WELL @ 5077.0ft (RKB - 13')
<b>Reference Site:</b>	SRC Kiehn Pad Sec.4-T4N-R68W	<b>MD Reference:</b>	WELL @ 5077.0ft (RKB - 13')
<b>Site Error:</b>	0.0ft	<b>North Reference:</b>	True
<b>Reference Well:</b>	SRC Weis K-9NHZ	<b>Survey Calculation Method:</b>	Minimum Curvature
<b>Well Error:</b>	0.0ft	<b>Output errors are at</b>	2.00 sigma
<b>Reference Wellbore</b>	Wellbore #1	<b>Database:</b>	Landmark
<b>Reference Design:</b>	Plan #1 (10-2-14)	<b>Offset TVD Reference:</b>	Offset Datum

<b>Offset Design</b>												<b>Offset Site Error:</b>	0.0 ft
Survey Program: 67-MWD												<b>Offset Well Error:</b>	0.0 ft
Reference		Offset		Semi Major Axis			Distance						
Measured Depth (ft)	Vertical Depth (ft)	Measured Depth (ft)	Vertical Depth (ft)	Reference (ft)	Offset (ft)	Highside Toolface (°)	Offset Wellbore Centre +N/-S (ft)	+E/-W (ft)	Between Centres (ft)	Between Ellipses (ft)	Minimum Separation (ft)	Separation Factor	Warning
0.0	0.0	0.5	0.5	0.0	0.0	-75.50	28.4	-109.8	113.5				
100.0	100.0	99.8	99.8	0.1	0.1	-76.03	27.5	-110.5	113.9	113.6	0.26	443.184	
200.0	200.0	199.9	199.8	0.3	0.4	-76.60	26.5	-111.3	114.4	113.7	0.69	165.871	
300.0	300.0	299.6	299.6	0.5	0.6	140.41	26.4	-112.0	116.4	115.3	1.11	105.040	
400.0	399.8	400.7	400.6	0.8	0.8	141.54	25.6	-112.8	121.1	119.5	1.53	79.147	
500.0	499.5	502.4	502.4	1.0	1.0	143.90	25.2	-111.7	126.8	124.8	1.97	64.229	
600.0	598.7	602.3	602.3	1.3	1.2	147.36	25.5	-109.0	134.5	132.1	2.43	55.453	
700.0	697.5	696.0	695.9	1.6	1.4	150.75	26.2	-107.9	147.1	144.2	2.89	50.841	
800.0	795.6	794.8	794.7	2.0	1.6	153.65	26.6	-109.9	166.1	162.7	3.37	49.211	
900.0	893.1	896.2	896.0	2.5	1.8	156.05	24.7	-110.5	186.2	182.3	3.86	48.278	
1,000.0	989.6	991.6	991.5	3.0	2.0	158.50	23.5	-109.9	209.0	204.6	4.34	48.201 SF	
1,100.0	1,085.3	1,084.0	1,083.9	3.6	2.2	160.82	23.5	-109.9	236.6	231.8	4.82	49.130	
1,200.0	1,179.8	1,177.7	1,177.6	4.2	2.4	162.93	24.2	-110.6	268.7	263.4	5.30	50.692	
1,300.0	1,273.2	1,265.0	1,264.9	4.9	2.6	164.80	26.0	-111.1	305.0	299.2	5.77	52.813	
1,400.0	1,365.2	1,355.8	1,355.6	5.7	2.8	166.25	27.8	-113.5	345.9	339.7	6.26	55.270	
1,500.0	1,455.8	1,445.1	1,444.9	6.6	3.0	167.27	28.3	-116.3	389.8	383.1	6.75	57.790	
1,600.0	1,545.0	1,537.9	1,537.6	7.5	3.2	168.32	29.1	-118.9	436.6	429.4	7.24	60.290	
1,700.0	1,633.7	1,631.6	1,631.3	8.4	3.4	169.45	29.6	-119.9	483.2	475.4	7.76	62.227	
1,800.0	1,722.4	1,706.3	1,706.0	9.4	3.5	170.26	30.5	-120.4	530.1	521.8	8.27	64.065	
1,900.0	1,811.0	1,775.8	1,775.4	10.3	3.7	170.71	31.9	-123.9	580.1	571.3	8.80	65.944	
2,000.0	1,899.7	1,854.4	1,853.7	11.3	3.8	171.01	33.7	-130.1	632.1	622.8	9.34	67.646	
2,100.0	1,988.4	1,966.3	1,965.0	12.3	4.1	170.93	31.4	-140.3	682.1	672.1	9.95	68.517	
2,200.0	2,077.1	2,056.4	2,054.4	13.2	4.3	170.45	25.2	-150.8	730.8	720.2	10.56	69.195	
2,300.0	2,165.8	2,148.6	2,145.5	14.2	4.5	169.93	17.6	-162.0	779.0	767.8	11.20	69.529	
2,400.0	2,254.5	2,234.4	2,230.4	15.2	4.8	169.47	10.0	-172.5	826.9	815.1	11.85	69.793	
2,500.0	2,343.2	2,309.2	2,304.3	16.1	5.0	169.11	4.0	-182.2	875.8	863.3	12.48	70.194	
2,600.0	2,431.9	2,380.4	2,374.7	17.1	5.2	168.87	-0.3	-191.5	926.1	913.0	13.09	70.741	
2,700.0	2,520.5	2,460.6	2,454.2	18.1	5.4	168.69	-3.7	-202.1	977.4	963.7	13.72	71.249	

<b>Company:</b>	Synergy Resources	<b>Local Co-ordinate Reference:</b>	Well SRC Weis K-9NHZ
<b>Project:</b>	SEC.4-T4N-R68W	<b>TVD Reference:</b>	WELL @ 5077.0ft (RKB - 13')
<b>Reference Site:</b>	SRC Kiehn Pad Sec.4-T4N-R68W	<b>MD Reference:</b>	WELL @ 5077.0ft (RKB - 13')
<b>Site Error:</b>	0.0ft	<b>North Reference:</b>	True
<b>Reference Well:</b>	SRC Weis K-9NHZ	<b>Survey Calculation Method:</b>	Minimum Curvature
<b>Well Error:</b>	0.0ft	<b>Output errors are at</b>	2.00 sigma
<b>Reference Wellbore</b>	Wellbore #1	<b>Database:</b>	Landmark
<b>Reference Design:</b>	Plan #1 (10-2-14)	<b>Offset TVD Reference:</b>	Offset Datum

Offset Design      SRC Kiehn Pad Sec.4-T4N-R68W - SRC Kiehn 31-4NHZ - Wellbore #1 - Wellbore #1													Offset Site Error:	0.0 ft
Survey Program: 161-MWD													Offset Well Error:	0.0 ft
Reference		Offset		Semi Major Axis			Distance							
Measured Depth	Vertical Depth	Measured Depth	Vertical Depth	Reference	Offset	Highside Toolface	Offset Wellbore Centre		Between Centres	Between Ellipses	Minimum Separation	Separation Factor	Warning	
(ft)	(ft)	(ft)	(ft)	(ft)	(ft)	(°)	+N/-S (ft)	+E/-W (ft)	(ft)	(ft)	(ft)			
0.0	0.0	0.0	0.0	0.0	0.0	-71.80	28.8	-87.5	92.1					
100.0	100.0	98.9	98.9	0.1	0.1	-71.84	29.0	-88.4	93.0	92.8	0.23	410.558		
200.0	200.0	198.7	198.6	0.3	0.3	-71.93	29.6	-90.6	95.3	94.7	0.60	159.020		
300.0	300.0	299.9	299.9	0.5	0.5	145.55	30.3	-91.4	97.7	96.7	1.02	96.295		
400.0	399.8	398.8	398.7	0.8	0.7	149.02	33.7	-91.0	103.0	101.5	1.44	71.390		
500.0	499.5	496.3	496.0	1.0	0.9	154.00	39.8	-90.9	113.2	111.3	1.91	59.369		
600.0	598.7	593.5	592.9	1.3	1.2	159.11	47.2	-91.4	128.6	126.2	2.39	53.890		
700.0	697.5	690.5	689.6	1.6	1.4	163.36	54.7	-92.5	148.8	145.9	2.86	52.105 SF		
800.0	795.6	788.7	787.7	2.0	1.6	165.30	58.4	-96.3	172.5	169.2	3.30	52.314		
900.0	893.1	891.2	890.0	2.5	1.8	165.81	57.9	-101.6	197.9	194.1	3.75	52.816		
1,000.0	989.6	994.1	992.9	3.0	2.0	167.05	56.9	-102.6	223.2	219.0	4.19	53.297		
1,100.0	1,085.3	1,087.0	1,085.8	3.6	2.2	168.41	56.4	-101.9	250.9	246.3	4.64	54.079		
1,200.0	1,179.8	1,174.8	1,173.6	4.2	2.4	169.31	56.4	-103.2	284.0	278.9	5.11	55.566		
1,300.0	1,273.2	1,265.4	1,264.2	4.9	2.6	170.10	57.3	-106.0	322.0	316.4	5.59	57.576		
1,400.0	1,365.2	1,360.7	1,359.4	5.7	2.8	171.01	58.8	-107.9	363.0	356.9	6.07	59.814		
1,500.0	1,455.8	1,449.2	1,447.9	6.6	3.0	171.67	59.3	-109.5	406.4	399.8	6.54	62.170		
1,600.0	1,545.0	1,535.7	1,534.3	7.5	3.1	172.10	59.4	-112.3	453.4	446.3	7.03	64.518		
1,700.0	1,633.7	1,623.8	1,622.4	8.4	3.3	172.63	59.9	-114.9	501.4	493.9	7.56	66.368		
1,800.0	1,722.4	1,716.3	1,714.9	9.4	3.5	173.12	60.4	-117.2	549.1	541.0	8.09	67.897		
1,900.0	1,811.0	1,807.0	1,805.5	10.3	3.7	173.64	60.9	-118.0	596.1	587.5	8.62	69.166		
2,000.0	1,899.7	1,903.9	1,902.4	11.3	3.9	173.96	60.2	-119.7	642.6	633.4	9.17	70.098		
2,100.0	1,988.4	1,994.1	1,992.6	12.3	4.1	174.06	57.5	-121.7	687.9	678.2	9.72	70.797		
2,200.0	2,077.1	2,092.1	2,090.4	13.2	4.3	173.85	52.1	-126.5	733.2	722.9	10.30	71.169		
2,300.0	2,165.8	2,185.2	2,183.0	14.2	4.5	173.56	45.1	-131.2	777.3	766.4	10.89	71.382		
2,400.0	2,254.5	2,272.2	2,269.7	15.2	4.7	173.32	38.8	-135.5	821.5	810.0	11.47	71.614		
2,500.0	2,343.2	2,349.8	2,347.0	16.1	4.8	173.14	33.5	-139.7	866.3	854.2	12.04	71.937		
2,600.0	2,431.9	2,422.3	2,419.2	17.1	5.0	172.98	29.6	-144.6	912.7	900.1	12.61	72.379		
2,700.0	2,520.5	2,495.1	2,491.7	18.1	5.2	172.81	26.3	-150.5	960.6	947.5	13.18	72.860		

<b>Company:</b>	Synergy Resources	<b>Local Co-ordinate Reference:</b>	Well SRC Weis K-9NHZ
<b>Project:</b>	SEC.4-T4N-R68W	<b>TVD Reference:</b>	WELL @ 5077.0ft (RKB - 13')
<b>Reference Site:</b>	SRC Kiehn Pad Sec.4-T4N-R68W	<b>MD Reference:</b>	WELL @ 5077.0ft (RKB - 13')
<b>Site Error:</b>	0.0ft	<b>North Reference:</b>	True
<b>Reference Well:</b>	SRC Weis K-9NHZ	<b>Survey Calculation Method:</b>	Minimum Curvature
<b>Well Error:</b>	0.0ft	<b>Output errors are at</b>	2.00 sigma
<b>Reference Wellbore</b>	Wellbore #1	<b>Database:</b>	Landmark
<b>Reference Design:</b>	Plan #1 (10-2-14)	<b>Offset TVD Reference:</b>	Offset Datum

<b>Offset Design</b>												<b>Offset Site Error:</b>	0.0 ft
Survey Program: 72-MWD												<b>Offset Well Error:</b>	0.0 ft
Reference		Offset		Semi Major Axis			Distance						
Measured Depth (ft)	Vertical Depth (ft)	Measured Depth (ft)	Vertical Depth (ft)	Reference (ft)	Offset (ft)	Highside Toolface (°)	Offset Wellbore Centre +N/-S (ft)	+E/-W (ft)	Between Centres (ft)	Between Ellipses (ft)	Minimum Separation (ft)	Separation Factor	Warning
0.0	0.0	0.5	0.5	0.0	0.0	-65.84	29.1	-65.0	71.2	71.2	0.00	N/A CC, ES	
100.0	100.0	99.7	99.7	0.1	0.1	-65.71	29.5	-65.3	71.7	71.4	0.25	281.194	
200.0	200.0	198.3	198.3	0.3	0.4	-66.46	29.5	-67.6	73.8	73.1	0.70	105.459	
300.0	300.0	296.7	296.6	0.5	0.6	148.69	28.4	-72.2	79.2	78.0	1.15	69.033	
400.0	399.8	394.7	394.3	0.8	0.8	147.10	25.9	-79.5	89.6	88.0	1.61	55.788	
500.0	499.5	493.4	492.4	1.0	1.1	145.82	22.1	-88.4	104.0	101.9	2.09	49.883	
600.0	598.7	591.9	590.4	1.3	1.4	145.14	17.2	-97.5	121.2	118.6	2.58	46.874	
700.0	697.5	686.6	684.5	1.6	1.7	144.95	11.7	-107.5	142.0	138.9	3.11	45.648 SF	
800.0	795.6	778.8	775.8	2.0	1.9	146.05	9.2	-119.0	168.5	164.9	3.64	46.269	
900.0	893.1	872.1	868.4	2.5	2.2	148.53	11.0	-131.0	200.0	195.8	4.15	48.149	
1,000.0	989.6	969.3	964.9	3.0	2.5	151.37	14.8	-142.1	234.2	229.5	4.66	50.240	
1,100.0	1,085.3	1,070.1	1,065.0	3.6	2.7	152.72	12.9	-153.6	269.2	264.0	5.20	51.730	
1,200.0	1,179.8	1,171.0	1,165.2	4.2	3.0	153.50	7.4	-163.7	304.6	298.8	5.78	52.657	
1,300.0	1,273.2	1,274.1	1,267.5	4.9	3.3	154.02	-1.3	-172.6	340.4	334.0	6.41	53.144	
1,400.0	1,365.2	1,369.6	1,362.4	5.7	3.5	154.59	-10.2	-178.9	377.3	370.2	7.02	53.744	
1,500.0	1,455.8	1,471.0	1,463.4	6.6	3.8	155.71	-18.0	-182.8	415.7	408.1	7.62	54.584	
1,600.0	1,545.0	1,555.7	1,547.9	7.5	4.0	156.82	-23.7	-185.0	456.6	448.4	8.19	55.726	
1,700.0	1,633.7	1,647.5	1,639.5	8.4	4.2	158.17	-29.1	-187.8	499.3	490.5	8.82	56.633	
1,800.0	1,722.4	1,736.8	1,728.6	9.4	4.4	159.25	-34.7	-190.4	542.0	532.5	9.43	57.476	
1,900.0	1,811.0	1,818.1	1,809.8	10.3	4.5	160.12	-39.4	-193.2	585.5	575.4	10.03	58.357	
2,000.0	1,899.7	1,925.1	1,916.4	11.3	4.8	160.98	-46.5	-197.5	629.0	618.4	10.68	58.884	
2,100.0	1,988.4	2,011.6	2,002.6	12.3	5.0	161.60	-52.9	-199.6	671.1	659.8	11.29	59.424	
2,200.0	2,077.1	2,099.0	2,089.8	13.2	5.2	162.18	-58.9	-202.1	713.8	701.9	11.90	59.967	
2,300.0	2,165.8	2,186.4	2,176.9	14.2	5.4	162.72	-64.5	-204.7	756.8	744.3	12.51	60.484	
2,400.0	2,254.5	2,273.4	2,263.8	15.2	5.6	163.17	-70.1	-207.7	800.3	787.2	13.13	60.963	
2,500.0	2,343.2	2,354.4	2,344.5	16.1	5.8	163.57	-74.8	-210.7	844.3	830.6	13.73	61.503	
2,600.0	2,431.9	2,446.6	2,436.5	17.1	6.0	164.01	-79.3	-214.5	889.2	874.8	14.34	62.005	
2,700.0	2,520.5	2,544.1	2,533.7	18.1	6.3	164.35	-85.9	-218.5	932.9	918.0	14.98	62.288	
2,800.0	2,609.2	2,625.1	2,614.4	19.0	6.5	164.56	-91.8	-222.1	976.8	961.2	15.60	62.616	

<b>Company:</b>	Synergy Resources	<b>Local Co-ordinate Reference:</b>	Well SRC Weis K-9NHZ
<b>Project:</b>	SEC.4-T4N-R68W	<b>TVD Reference:</b>	WELL @ 5077.0ft (RKB - 13')
<b>Reference Site:</b>	SRC Kiehn Pad Sec.4-T4N-R68W	<b>MD Reference:</b>	WELL @ 5077.0ft (RKB - 13')
<b>Site Error:</b>	0.0ft	<b>North Reference:</b>	True
<b>Reference Well:</b>	SRC Weis K-9NHZ	<b>Survey Calculation Method:</b>	Minimum Curvature
<b>Well Error:</b>	0.0ft	<b>Output errors are at</b>	2.00 sigma
<b>Reference Wellbore</b>	Wellbore #1	<b>Database:</b>	Landmark
<b>Reference Design:</b>	Plan #1 (10-2-14)	<b>Offset TVD Reference:</b>	Offset Datum

Offset Design      SRC Kiehn Pad Sec.4-T4N-R68W - SRC Kiehn 32-4NHZ - Wellbore #1 - Wellbore #1													Offset Site Error:      0.0 ft	
Survey Program: 110-MWD													Offset Well Error:      0.0 ft	
Reference		Offset		Semi Major Axis			Distance							
Measured Depth	Vertical Depth	Measured Depth	Vertical Depth	Reference	Offset	Highside Toolface	Offset Wellbore Centre		Between Centres	Between Ellipses	Minimum Separation	Separation Factor	Warning	
(ft)	(ft)	(ft)	(ft)	(ft)	(ft)	(°)	+N/-S (ft)	+E/-W (ft)	(ft)	(ft)	(ft)			
0.0	0.0	0.5	0.5	0.0	0.0	-55.16	29.5	-42.4	51.6	51.6	0.00	N/A CC, ES		
100.0	100.0	100.0	100.0	0.1	0.1	-55.95	29.2	-43.2	52.1	51.9	0.23	230.124		
200.0	200.0	199.7	199.7	0.3	0.3	-57.83	28.5	-45.3	53.5	52.8	0.66	80.941		
300.0	300.0	299.8	299.7	0.5	0.5	158.03	28.1	-47.2	56.6	55.5	1.08	52.387		
400.0	399.8	400.1	400.0	0.8	0.7	158.42	27.3	-48.9	62.4	60.9	1.50	41.711		
500.0	499.5	500.2	500.1	1.0	0.9	159.87	26.2	-49.7	70.6	68.7	1.93	36.544		
600.0	598.7	598.0	597.9	1.3	1.2	161.42	25.0	-51.0	82.6	80.2	2.38	34.622 SF		
700.0	697.5	698.3	698.1	1.6	1.4	162.85	23.7	-53.4	98.7	95.9	2.85	34.677		
800.0	795.6	796.1	796.0	2.0	1.6	164.57	21.9	-54.1	116.5	113.2	3.30	35.317		
900.0	893.1	891.8	891.6	2.5	1.8	167.22	23.0	-54.3	139.2	135.5	3.75	37.103		
1,000.0	989.6	987.6	987.4	3.0	2.0	169.31	24.5	-55.0	166.1	161.9	4.22	39.411		
1,100.0	1,085.3	1,083.1	1,082.9	3.6	2.2	170.84	25.6	-56.0	196.5	191.8	4.68	41.980		
1,200.0	1,179.8	1,182.9	1,182.7	4.2	2.4	171.60	24.6	-57.7	229.2	224.0	5.16	44.422		
1,300.0	1,273.2	1,275.9	1,275.7	4.9	2.6	172.22	22.6	-58.2	263.6	258.0	5.62	46.876		
1,400.0	1,365.2	1,363.3	1,363.1	5.7	2.8	173.27	23.3	-57.6	302.4	296.4	6.08	49.733		
1,500.0	1,455.8	1,446.4	1,446.1	6.6	2.9	174.09	25.0	-58.0	346.2	339.6	6.55	52.839		
1,600.0	1,545.0	1,541.9	1,541.6	7.5	3.1	174.80	27.1	-59.4	393.7	386.6	7.05	55.872		
1,700.0	1,633.7	1,638.5	1,638.2	8.4	3.3	175.46	27.2	-58.9	439.6	432.0	7.56	58.108		
1,800.0	1,722.4	1,720.8	1,720.4	9.4	3.5	175.99	27.6	-57.9	485.2	477.2	8.08	60.069		
1,900.0	1,811.0	1,810.2	1,809.9	10.3	3.7	176.46	28.7	-57.6	532.1	523.5	8.61	61.778		
2,000.0	1,899.7	1,896.3	1,896.0	11.3	3.9	176.87	29.6	-56.8	578.4	569.3	9.14	63.266		
2,100.0	1,988.4	1,983.0	1,982.7	12.3	4.1	177.20	31.0	-56.6	625.6	615.9	9.68	64.629		
2,200.0	2,077.1	2,082.8	2,082.4	13.2	4.3	177.37	31.0	-57.3	672.1	661.8	10.24	65.626		
2,300.0	2,165.8	2,172.8	2,172.5	14.2	4.4	177.56	30.3	-56.4	717.1	706.4	10.79	66.494		
2,400.0	2,254.5	2,272.7	2,272.3	15.2	4.7	177.56	28.3	-57.3	762.5	751.1	11.36	67.136		
2,500.0	2,343.2	2,359.7	2,359.2	16.1	4.8	177.53	25.2	-57.5	806.3	794.4	11.91	67.700		
2,600.0	2,431.9	2,444.7	2,444.2	17.1	5.0	177.45	22.5	-58.9	851.2	838.8	12.46	68.292		
2,700.0	2,520.5	2,538.8	2,538.3	18.1	5.2	177.40	19.6	-60.0	895.9	882.9	13.04	68.725		
2,800.0	2,609.2	2,629.4	2,628.7	19.0	5.4	177.27	15.8	-61.8	940.2	926.6	13.60	69.110		
2,900.0	2,697.9	2,716.7	2,715.9	20.0	5.6	177.15	12.2	-63.6	984.7	970.5	14.17	69.485		

<b>Company:</b>	Synergy Resources	<b>Local Co-ordinate Reference:</b>	Well SRC Weis K-9NHZ
<b>Project:</b>	SEC.4-T4N-R68W	<b>TVD Reference:</b>	WELL @ 5077.0ft (RKB - 13')
<b>Reference Site:</b>	SRC Kiehn Pad Sec.4-T4N-R68W	<b>MD Reference:</b>	WELL @ 5077.0ft (RKB - 13')
<b>Site Error:</b>	0.0ft	<b>North Reference:</b>	True
<b>Reference Well:</b>	SRC Weis K-9NHZ	<b>Survey Calculation Method:</b>	Minimum Curvature
<b>Well Error:</b>	0.0ft	<b>Output errors are at</b>	2.00 sigma
<b>Reference Wellbore</b>	Wellbore #1	<b>Database:</b>	Landmark
<b>Reference Design:</b>	Plan #1 (10-2-14)	<b>Offset TVD Reference:</b>	Offset Datum

Offset Design													Offset Site Error:	0.0 ft
Survey Program: 103-MWD													Offset Well Error:	0.0 ft
Reference		Offset		Semi Major Axis			Distance							Warning
Measured Depth (ft)	Vertical Depth (ft)	Measured Depth (ft)	Vertical Depth (ft)	Reference (ft)	Offset (ft)	Highside Toolface (°)	Offset Wellbore Centre +N/-S (ft)	+E/-W (ft)	Between Centres (ft)	Between Ellipses (ft)	Minimum Separation (ft)	Separation Factor		
0.0	0.0	0.5	0.5	0.0	0.0	-33.54	29.9	-19.8	35.8	35.8	0.00	N/A CC, ES		
100.0	100.0	100.3	100.3	0.1	0.1	-33.92	29.9	-20.1	36.1	35.8	0.23	160.071		
200.0	200.0	200.0	200.0	0.3	0.3	-34.53	30.3	-20.8	36.8	36.1	0.66	55.480		
300.0	300.0	299.3	299.3	0.5	0.5	-177.61	32.5	-22.0	41.0	39.9	1.10	37.294		
400.0	399.8	398.6	398.5	0.8	0.8	-176.82	35.6	-23.1	49.4	47.8	1.54	32.109		
500.0	499.5	497.0	496.8	1.0	1.0	-176.18	39.9	-24.5	62.5	60.5	1.99	31.468 SF		
600.0	598.7	595.0	594.6	1.3	1.2	-176.39	44.6	-27.0	80.1	77.6	2.44	32.831		
700.0	697.5	694.8	694.4	1.6	1.4	-176.70	49.1	-29.5	100.7	97.9	2.88	35.014		
800.0	795.6	797.0	796.5	2.0	1.6	-176.94	50.9	-29.9	121.4	118.1	3.29	36.865		
900.0	893.1	894.9	894.4	2.5	1.8	-177.36	50.2	-29.4	143.1	139.3	3.72	38.412		
1,000.0	989.6	989.8	989.3	3.0	2.0	-178.06	49.6	-30.1	168.8	164.6	4.18	40.399		
1,100.0	1,085.3	1,083.6	1,083.0	3.6	2.2	-178.77	49.5	-31.8	199.0	194.3	4.64	42.861		
1,200.0	1,179.8	1,181.6	1,181.0	4.2	2.4	-179.16	49.6	-32.9	232.3	227.2	5.10	45.515		
1,300.0	1,273.2	1,273.9	1,273.4	4.9	2.6	-179.30	49.3	-32.9	267.9	262.3	5.56	48.207		
1,400.0	1,365.2	1,362.8	1,362.2	5.7	2.8	-179.10	50.6	-32.1	307.5	301.4	6.03	51.032		
1,500.0	1,455.8	1,453.0	1,452.4	6.6	3.0	-178.84	52.6	-31.2	350.8	344.3	6.50	53.992		
1,600.0	1,545.0	1,545.0	1,544.4	7.5	3.2	-178.66	54.2	-30.1	396.8	389.8	6.98	56.839		
1,700.0	1,633.7	1,630.5	1,629.9	8.4	3.4	-178.57	55.4	-29.1	443.4	435.9	7.50	59.125		
1,800.0	1,722.4	1,716.3	1,715.7	9.4	3.5	-178.73	56.2	-29.9	490.8	482.7	8.03	61.125		
1,900.0	1,811.0	1,807.6	1,806.9	10.3	3.7	-178.87	57.1	-30.8	538.1	529.5	8.57	62.812		
2,000.0	1,899.7	1,893.3	1,892.7	11.3	3.9	-179.12	56.8	-32.4	585.0	575.9	9.10	64.295		
2,100.0	1,988.4	1,981.5	1,980.8	12.3	4.1	-179.34	57.0	-34.4	632.6	623.0	9.64	65.620		
2,200.0	2,077.1	2,081.0	2,080.3	13.2	4.3	-179.47	56.9	-35.5	679.3	669.1	10.20	66.620		
2,300.0	2,165.8	2,173.6	2,172.9	14.2	4.5	-179.54	56.0	-35.3	724.7	713.9	10.74	67.452		
2,400.0	2,254.5	2,257.1	2,256.4	15.2	4.7	-179.60	55.4	-35.2	770.3	759.0	11.29	68.257		
2,500.0	2,343.2	2,342.6	2,341.9	16.1	4.8	-179.66	55.2	-35.7	816.7	804.9	11.84	69.003		
2,600.0	2,431.9	2,428.3	2,427.6	17.1	5.0	-179.77	54.6	-36.8	863.1	850.7	12.38	69.688		
2,700.0	2,520.5	2,511.0	2,510.3	18.1	5.2	-179.85	54.8	-38.1	910.2	897.3	12.93	70.401		
2,800.0	2,609.2	2,606.2	2,605.5	19.0	5.4	-179.91	54.9	-39.2	957.1	943.6	13.49	70.929		

<b>Company:</b>	Synergy Resources	<b>Local Co-ordinate Reference:</b>	Well SRC Weis K-9NHZ
<b>Project:</b>	SEC.4-T4N-R68W	<b>TVD Reference:</b>	WELL @ 5077.0ft (RKB - 13')
<b>Reference Site:</b>	SRC Kiehn Pad Sec.4-T4N-R68W	<b>MD Reference:</b>	WELL @ 5077.0ft (RKB - 13')
<b>Site Error:</b>	0.0ft	<b>North Reference:</b>	True
<b>Reference Well:</b>	SRC Weis K-9NHZ	<b>Survey Calculation Method:</b>	Minimum Curvature
<b>Well Error:</b>	0.0ft	<b>Output errors are at</b>	2.00 sigma
<b>Reference Wellbore</b>	Wellbore #1	<b>Database:</b>	Landmark
<b>Reference Design:</b>	Plan #1 (10-2-14)	<b>Offset TVD Reference:</b>	Offset Datum

<b>Offset Design</b>												<b>Offset Site Error:</b>	0.0 ft
Survey Program: 169-MWD												<b>Offset Well Error:</b>	0.0 ft
Reference		Offset		Semi Major Axis			Distance						
Measured Depth (ft)	Vertical Depth (ft)	Measured Depth (ft)	Vertical Depth (ft)	Reference (ft)	Offset (ft)	Highside Toolface (°)	Offset Wellbore Centre +N/-S (ft)	+E/-W (ft)	Between Centres (ft)	Between Ellipses (ft)	Minimum Separation (ft)	Separation Factor	Warning
0.0	0.0	0.5	0.5	0.0	0.0	0.00	30.2	0.0	30.2	30.2	0.00	N/A CC	
100.0	100.0	100.5	100.5	0.1	0.1	-1.88	30.2	-1.0	30.3	30.0	0.23	132.247	
200.0	200.0	200.5	200.5	0.3	0.3	-7.13	30.2	-3.8	30.5	29.9	0.60	50.857 ES	
300.0	300.0	300.7	300.6	0.5	0.5	-156.37	29.6	-6.1	31.8	30.8	1.02	31.211	
400.0	399.8	400.6	400.5	0.8	0.7	-162.41	28.8	-7.7	36.4	34.9	1.44	25.272	
500.0	499.5	500.4	500.3	1.0	0.9	-166.35	27.9	-7.9	44.0	42.1	1.87	23.489 SF	
600.0	598.7	599.3	599.1	1.3	1.1	-170.56	26.9	-8.8	55.4	53.1	2.31	23.954	
700.0	697.5	699.8	699.7	1.6	1.3	-174.31	25.5	-10.3	70.5	67.7	2.76	25.542	
800.0	795.6	797.2	797.0	2.0	1.5	-175.51	23.3	-9.0	87.0	83.8	3.20	27.158	
900.0	893.1	893.8	893.6	2.5	1.7	-176.14	23.4	-8.5	109.2	105.6	3.66	29.838	
1,000.0	989.6	990.0	989.8	3.0	1.9	-178.42	21.5	-11.6	135.2	131.1	4.12	32.810	
1,100.0	1,085.3	1,085.0	1,084.8	3.6	2.1	-179.31	20.9	-13.2	164.8	160.3	4.58	35.983	
1,200.0	1,179.8	1,178.3	1,178.0	4.2	2.3	-179.54	21.3	-14.0	198.2	193.2	5.04	39.289	
1,300.0	1,273.2	1,274.5	1,274.2	4.9	2.5	-179.78	21.5	-14.9	234.7	229.2	5.51	42.577	
1,400.0	1,365.2	1,364.7	1,364.4	5.7	2.7	-179.55	22.0	-13.9	273.7	267.7	5.97	45.808	
1,500.0	1,455.8	1,457.0	1,456.7	6.6	2.9	-179.13	23.7	-12.3	316.3	309.9	6.45	49.058	
1,600.0	1,545.0	1,549.5	1,549.1	7.5	3.1	-178.58	25.4	-9.0	361.1	354.1	6.93	52.076	
1,700.0	1,633.7	1,638.2	1,637.6	8.4	3.3	-177.90	27.7	-4.1	406.4	398.9	7.46	54.468	
1,800.0	1,722.4	1,733.9	1,733.2	9.4	3.5	-177.28	30.1	1.6	451.3	443.3	8.01	56.365	
1,900.0	1,811.0	1,837.1	1,836.0	10.3	3.7	-176.81	30.3	8.6	494.3	485.7	8.57	57.696	
2,000.0	1,899.7	1,940.6	1,939.3	11.3	3.9	-176.52	27.9	16.4	534.9	525.7	9.14	58.533	
2,100.0	1,988.4	2,036.5	2,034.7	12.3	4.1	-176.18	25.1	25.3	574.2	564.4	9.71	59.104	
2,200.0	2,077.1	2,155.8	2,153.2	13.2	4.4	-175.86	18.8	37.5	611.3	600.9	10.34	59.120	
2,300.0	2,165.8	2,272.3	2,268.4	14.2	4.7	-175.82	6.8	50.4	643.7	632.7	10.96	58.752	
2,400.0	2,254.5	2,365.2	2,359.9	15.2	5.0	-175.72	-3.3	62.1	675.1	663.5	11.55	58.470	
2,500.0	2,343.2	2,457.3	2,450.8	16.1	5.2	-175.57	-12.5	73.7	707.1	695.0	12.14	58.238	
2,600.0	2,431.9	2,549.3	2,541.6	17.1	5.5	-175.33	-20.8	86.5	739.3	726.6	12.75	57.990	
2,700.0	2,520.5	2,632.0	2,623.0	18.1	5.8	-174.91	-26.2	99.8	772.3	759.0	13.36	57.810	
2,800.0	2,609.2	2,716.0	2,706.0	19.0	6.0	-174.52	-30.4	112.6	807.1	793.1	13.97	57.754	
2,900.0	2,697.9	2,809.1	2,797.9	20.0	6.3	-174.17	-35.1	126.0	842.2	827.6	14.61	57.645	
3,000.0	2,786.6	2,898.4	2,886.2	21.0	6.5	-173.82	-39.2	139.3	877.5	862.3	15.25	57.546	
3,100.0	2,875.3	2,981.5	2,968.2	22.0	6.8	-173.46	-42.1	151.9	913.7	897.8	15.88	57.524	
3,200.0	2,964.0	3,067.9	3,053.8	22.9	7.0	-173.20	-44.7	163.5	951.0	934.5	16.52	57.581	
3,300.0	3,052.7	3,172.1	3,157.1	23.9	7.3	-172.98	-49.1	176.7	987.7	970.5	17.18	57.478	

<b>Company:</b>	Synergy Resources	<b>Local Co-ordinate Reference:</b>	Well SRC Weis K-9NHZ
<b>Project:</b>	SEC.4-T4N-R68W	<b>TVD Reference:</b>	WELL @ 5077.0ft (RKB - 13')
<b>Reference Site:</b>	SRC Kiehn Pad Sec.4-T4N-R68W	<b>MD Reference:</b>	WELL @ 5077.0ft (RKB - 13')
<b>Site Error:</b>	0.0ft	<b>North Reference:</b>	True
<b>Reference Well:</b>	SRC Weis K-9NHZ	<b>Survey Calculation Method:</b>	Minimum Curvature
<b>Well Error:</b>	0.0ft	<b>Output errors are at</b>	2.00 sigma
<b>Reference Wellbore</b>	Wellbore #1	<b>Database:</b>	Landmark
<b>Reference Design:</b>	Plan #1 (10-2-14)	<b>Offset TVD Reference:</b>	Offset Datum

Offset Design													Offset Site Error:	0.0 ft
SRC Kiehn Pad Sec.4-T4N-R68W - SRC Kiehn N-4NHZ - Wellbore #1 - Plan #3 (9-24-14)R													Offset Well Error:	0.0 ft
Survey Program: 0-MWD														
Reference		Offset		Semi Major Axis			Distance							
Measured Depth (ft)	Vertical Depth (ft)	Measured Depth (ft)	Vertical Depth (ft)	Reference (ft)	Offset (ft)	Highside Toolface (°)	Offset Wellbore Centre +N/-S (ft)	+E/-W (ft)	Between Centres (ft)	Between Ellipses (ft)	Minimum Separation (ft)	Separation Factor	Warning	
0.0	0.0	0.5	0.5	0.0	0.0	-78.04	28.1	-132.4	135.4					
100.0	100.0	100.5	100.5	0.1	0.1	-78.04	28.1	-132.4	135.4	135.1	0.23	599.240		
200.0	200.0	200.5	200.5	0.3	0.3	-78.04	28.1	-132.4	135.4	134.7	0.68	200.411 CC, ES		
300.0	300.0	300.5	300.5	0.5	0.6	139.07	28.1	-132.4	136.7	135.6	1.11	123.371		
400.0	399.8	400.3	400.3	0.8	0.8	140.42	28.1	-132.4	140.7	139.1	1.54	91.103		
500.0	499.5	500.0	500.0	1.0	1.0	142.49	28.1	-132.4	147.5	145.5	2.00	73.693		
600.0	598.7	599.2	599.2	1.3	1.2	145.07	28.1	-132.4	157.4	154.9	2.48	63.562		
700.0	697.5	698.0	698.0	1.6	1.5	147.93	28.1	-132.4	170.5	167.5	2.96	57.536		
800.0	795.6	796.1	796.1	2.0	1.7	150.86	28.1	-132.4	187.0	183.5	3.46	54.068		
900.0	893.1	893.6	893.6	2.5	1.9	153.70	28.1	-132.4	207.0	203.0	3.96	52.304		
1,000.0	989.6	990.1	990.1	3.0	2.1	156.34	28.1	-132.4	230.6	226.1	4.46	51.723 SF		
1,100.0	1,085.3	1,085.8	1,085.8	3.6	2.3	158.73	28.1	-132.4	257.8	252.8	4.96	51.987		
1,200.0	1,179.8	1,180.3	1,180.3	4.2	2.5	160.85	28.1	-132.4	288.5	283.1	5.46	52.867		
1,300.0	1,273.2	1,273.7	1,273.7	4.9	2.8	162.71	28.1	-132.4	322.8	316.9	5.96	54.200		
1,400.0	1,365.2	1,365.7	1,365.7	5.7	3.0	164.33	28.1	-132.4	360.5	354.1	6.45	55.871		
1,500.0	1,455.8	1,451.8	1,451.8	6.6	3.1	165.59	28.0	-132.9	401.9	395.0	6.94	57.923		
1,600.0	1,545.0	1,532.9	1,532.9	7.5	3.3	166.44	27.5	-135.4	447.9	440.5	7.44	60.215		
1,700.0	1,633.7	1,612.4	1,612.2	8.4	3.5	167.08	26.5	-140.1	496.4	488.4	7.97	62.240		
1,800.0	1,722.4	1,690.5	1,690.0	9.4	3.6	167.40	25.2	-146.9	546.3	537.7	8.53	64.075		
1,900.0	1,811.0	1,767.3	1,766.3	10.3	3.8	167.47	23.5	-155.5	597.6	588.5	9.09	65.719		
2,000.0	1,899.7	1,842.6	1,840.8	11.3	4.0	167.37	21.4	-165.9	650.2	640.6	9.68	67.189		
2,100.0	1,988.4	1,916.3	1,913.5	12.3	4.2	167.13	19.0	-177.9	704.2	693.9	10.28	68.486		
2,200.0	2,077.1	1,998.4	1,994.3	13.2	4.4	166.80	16.1	-192.6	759.0	748.1	10.92	69.506		
2,300.0	2,165.8	2,082.0	2,076.4	14.2	4.7	166.51	13.1	-207.6	813.8	802.2	11.57	70.349		
2,400.0	2,254.5	2,165.6	2,158.6	15.2	4.9	166.26	10.1	-222.6	868.6	856.4	12.22	71.066		
2,500.0	2,343.2	2,249.1	2,240.8	16.1	5.2	166.04	7.2	-237.5	923.5	910.6	12.90	71.607		
2,600.0	2,431.9	2,332.7	2,322.9	17.1	5.5	165.84	4.2	-252.5	978.3	964.7	13.57	72.101		



Offset Design												Offset Site Error:		0.0 ft
Survey Program: 0-MWD												Offset Well Error:		0.0 ft
Reference		Offset		Semi Major Axis			Distance						Warning	
Measured Depth	Vertical Depth	Measured Depth	Vertical Depth	Reference	Offset	Highside Toolface	Offset Wellbore Centre		Between Centres	Between Ellipses	Minimum Separation	Separation Factor		
(ft)	(ft)	(ft)	(ft)	(ft)	(ft)	(°)	+N/-S (ft)	+E/-W (ft)	(ft)	(ft)	(ft)			
0.0	0.0	0.0	0.0	0.0	0.0	-90.92	-0.4	-22.6	22.6					
100.0	100.0	100.0	100.0	0.1	0.1	-90.92	-0.4	-22.6	22.6	22.4	0.22	100.481		
200.0	200.0	200.0	200.0	0.3	0.3	-90.92	-0.4	-22.6	22.6	21.9	0.67	33.494	CC	
300.0	300.0	300.0	300.0	0.5	0.6	129.14	-0.4	-22.6	23.6	22.5	1.11	21.390		
400.0	399.8	399.8	399.8	0.8	0.8	137.65	-0.4	-22.6	27.3	25.7	1.54	17.668		
500.0	499.5	500.5	500.4	1.0	1.0	146.03	-1.7	-21.5	32.7	30.7	1.97	16.575		
600.0	598.7	601.3	601.2	1.3	1.2	152.15	-5.8	-18.1	38.5	36.1	2.40	16.061		
700.0	697.5	702.4	701.9	1.6	1.4	156.84	-12.7	-12.4	44.6	41.8	2.85	15.665		
800.0	795.6	803.8	802.5	2.0	1.7	160.57	-22.3	-4.5	50.8	47.5	3.31	15.336		
900.0	893.1	905.4	902.8	2.5	2.0	163.64	-34.6	5.8	57.0	53.3	3.79	15.045		
1,000.0	989.6	1,007.3	1,002.7	3.0	2.4	166.26	-49.8	18.3	63.3	59.1	4.29	14.775		
1,100.0	1,085.3	1,109.4	1,102.1	3.6	2.8	168.54	-67.7	33.1	69.6	64.8	4.80	14.516		
1,200.0	1,179.8	1,211.7	1,200.9	4.2	3.3	170.57	-88.4	50.3	75.9	70.6	5.32	14.261		
1,300.0	1,273.2	1,314.3	1,298.9	4.9	3.9	172.40	-111.8	69.7	82.2	76.3	5.87	14.002		
1,400.0	1,365.2	1,417.1	1,395.9	5.7	4.6	174.09	-138.0	91.3	88.4	82.0	6.44	13.729		
1,500.0	1,455.8	1,520.2	1,491.9	6.6	5.3	175.66	-166.9	115.3	94.6	87.6	7.02	13.479		
1,600.0	1,545.0	1,623.5	1,586.7	7.5	6.1	177.14	-198.6	141.5	100.6	93.0	7.65	13.147		
1,700.0	1,633.7	1,727.1	1,680.2	8.4	7.0	178.51	-233.0	169.9	104.1	95.7	8.36	12.452		
1,800.0	1,722.4	1,827.2	1,769.7	9.4	7.9	179.79	-267.5	198.5	105.7	96.6	9.08	11.637		
1,900.0	1,811.0	1,927.2	1,859.0	10.3	8.8	-178.97	-302.0	227.1	107.4	97.5	9.83	10.924		
2,000.0	1,899.7	2,027.1	1,948.4	11.3	9.7	-177.76	-336.5	255.6	109.1	98.5	10.60	10.292		
2,100.0	1,988.4	2,127.1	2,037.8	12.3	10.7	-176.60	-371.0	284.2	110.8	99.4	11.39	9.727		
2,200.0	2,077.1	2,227.1	2,127.1	13.2	11.6	-175.47	-405.5	312.7	112.6	100.4	12.22	9.219		
2,300.0	2,165.8	2,327.0	2,216.5	14.2	12.5	-174.38	-439.9	341.3	114.4	101.4	13.07	8.758		
2,400.0	2,254.5	2,427.0	2,305.9	15.2	13.5	-173.32	-474.4	369.8	116.3	102.4	13.95	8.339		
2,500.0	2,343.2	2,526.9	2,395.3	16.1	14.4	-172.30	-508.9	398.3	118.2	103.4	14.86	7.956		
2,600.0	2,431.9	2,626.9	2,484.6	17.1	15.3	-171.31	-543.4	426.9	120.2	104.4	15.81	7.605		
2,700.0	2,520.5	2,726.9	2,574.0	18.1	16.3	-170.35	-577.9	455.4	122.2	105.4	16.78	7.282		
2,800.0	2,609.2	2,826.8	2,663.4	19.0	17.2	-169.42	-612.4	484.0	124.2	106.4	17.78	6.984		
2,900.0	2,697.9	2,926.8	2,752.8	20.0	18.2	-168.52	-646.9	512.5	126.3	107.4	18.82	6.710		
3,000.0	2,786.6	3,026.7	2,842.1	21.0	19.1	-167.65	-681.4	541.1	128.3	108.5	19.88	6.456		
3,100.0	2,875.3	3,126.7	2,931.5	22.0	20.1	-166.81	-715.9	569.6	130.5	109.5	20.97	6.221		
3,200.0	2,964.0	3,226.7	3,020.9	22.9	21.0	-166.00	-750.3	598.2	132.6	110.5	22.09	6.003		
3,300.0	3,052.7	3,326.6	3,110.3	23.9	21.9	-165.21	-784.8	626.7	134.8	111.5	23.23	5.800		
3,400.0	3,141.4	3,426.6	3,199.6	24.9	22.9	-164.45	-819.3	655.3	136.9	112.5	24.40	5.612		
3,500.0	3,230.0	3,526.5	3,289.0	25.8	23.8	-163.71	-853.8	683.8	139.2	113.6	25.60	5.437		
3,600.0	3,318.7	3,626.5	3,378.4	26.8	24.8	-163.00	-888.3	712.4	141.4	114.6	26.81	5.274		
3,700.0	3,407.4	3,726.5	3,467.7	27.8	25.7	-162.30	-922.8	740.9	143.7	115.6	28.05	5.122		
3,800.0	3,496.1	3,826.4	3,557.1	28.8	26.7	-161.63	-957.3	769.5	145.9	116.6	29.31	4.980		
3,900.0	3,584.8	3,926.4	3,646.5	29.7	27.6	-160.98	-991.8	798.0	148.2	117.6	30.58	4.847		
4,000.0	3,673.5	4,026.3	3,735.9	30.7	28.6	-160.35	-1,026.3	826.5	150.5	118.7	31.88	4.722		
4,100.0	3,762.2	4,126.3	3,825.2	31.7	29.5	-159.74	-1,060.8	855.1	152.9	119.7	33.19	4.606		
4,200.0	3,850.9	4,226.3	3,914.6	32.7	30.5	-159.14	-1,095.2	883.6	155.2	120.7	34.52	4.496		
4,300.0	3,939.5	4,326.2	4,004.0	33.6	31.4	-158.57	-1,129.7	912.2	157.6	121.7	35.87	4.394		
4,400.0	4,028.2	4,426.2	4,093.4	34.6	32.4	-158.01	-1,164.2	940.7	160.0	122.7	37.23	4.297		
4,500.0	4,116.9	4,526.1	4,182.7	35.6	33.3	-157.47	-1,198.7	969.3	162.4	123.8	38.60	4.206		
4,600.0	4,205.6	4,626.1	4,272.1	36.6	34.3	-156.94	-1,233.2	997.8	164.8	124.8	39.99	4.120		
4,700.0	4,294.3	4,726.0	4,361.5	37.5	35.2	-156.43	-1,267.7	1,026.4	167.2	125.8	41.39	4.039		
4,800.0	4,383.0	4,826.0	4,450.8	38.5	36.2	-155.93	-1,302.2	1,054.9	169.6	126.8	42.81	3.963		
4,900.0	4,471.7	4,926.0	4,540.2	39.5	37.1	-155.45	-1,336.7	1,083.5	172.1	127.9	44.23	3.891		
5,000.0	4,560.4	5,025.9	4,629.6	40.5	38.1	-154.98	-1,371.2	1,112.0	174.5	128.9	45.66	3.823		
5,100.0	4,649.0	5,125.9	4,719.0	41.4	39.0	-154.53	-1,405.6	1,140.6	177.0	129.9	47.11	3.758		

<b>Company:</b>	Synergy Resources	<b>Local Co-ordinate Reference:</b>	Well SRC Weis K-9NHZ
<b>Project:</b>	SEC.4-T4N-R68W	<b>TVD Reference:</b>	WELL @ 5077.0ft (RKB - 13')
<b>Reference Site:</b>	SRC Kiehn Pad Sec.4-T4N-R68W	<b>MD Reference:</b>	WELL @ 5077.0ft (RKB - 13')
<b>Site Error:</b>	0.0ft	<b>North Reference:</b>	True
<b>Reference Well:</b>	SRC Weis K-9NHZ	<b>Survey Calculation Method:</b>	Minimum Curvature
<b>Well Error:</b>	0.0ft	<b>Output errors are at</b>	2.00 sigma
<b>Reference Wellbore</b>	Wellbore #1	<b>Database:</b>	Landmark
<b>Reference Design:</b>	Plan #1 (10-2-14)	<b>Offset TVD Reference:</b>	Offset Datum

Offset Design												Offset Site Error:	0.0 ft
Survey Program: 0-MWDD												Offset Well Error:	0.0 ft
Reference		Offset		Semi Major Axis			Distance						
Measured Depth (ft)	Vertical Depth (ft)	Measured Depth (ft)	Vertical Depth (ft)	Reference (ft)	Offset (ft)	Highside Toolface (°)	Offset Wellbore Centre +N/-S (ft)	+E/-W (ft)	Between Centres (ft)	Between Ellipses (ft)	Minimum Separation (ft)	Separation Factor	Warning
5,200.0	4,737.7	5,225.8	4,808.3	42.4	40.0	-154.08	-1,440.1	1,169.1	179.5	130.9	48.56	3.696	
5,300.0	4,826.4	5,325.8	4,897.7	43.4	40.9	-153.65	-1,474.6	1,197.7	182.0	132.0	50.03	3.638	
5,400.0	4,915.1	5,425.8	4,987.1	44.4	41.9	-153.23	-1,509.1	1,226.2	184.5	133.0	51.50	3.583	
5,500.0	5,003.8	5,525.7	5,076.5	45.4	42.8	-152.83	-1,543.6	1,254.7	187.0	134.0	52.98	3.530	
5,600.0	5,092.5	5,625.7	5,165.8	46.3	43.8	-152.43	-1,578.1	1,283.3	189.5	135.1	54.46	3.480	
5,700.0	5,181.2	5,725.6	5,255.2	47.3	44.7	-152.04	-1,612.6	1,311.8	192.1	136.1	55.96	3.432	
5,800.0	5,269.9	5,825.6	5,344.6	48.3	45.7	-151.66	-1,647.1	1,340.4	194.6	137.1	57.46	3.387	
5,900.0	5,358.5	5,925.6	5,433.9	49.3	46.6	-151.30	-1,681.6	1,368.9	197.2	138.2	58.97	3.343	
6,000.0	5,447.2	6,025.5	5,523.3	50.2	47.6	-150.94	-1,716.1	1,397.5	199.7	139.2	60.48	3.302	
6,100.0	5,535.9	6,125.5	5,612.7	51.2	48.5	-150.59	-1,750.5	1,426.0	202.3	140.3	62.00	3.262	
6,200.0	5,624.6	6,225.4	5,702.1	52.2	49.5	-150.25	-1,785.0	1,454.6	204.8	141.3	63.53	3.225	
6,300.0	5,713.3	6,325.4	5,791.4	53.2	50.4	-149.92	-1,819.5	1,483.1	207.4	142.4	65.06	3.188	
6,400.0	5,802.0	6,425.4	5,880.8	54.1	51.4	-149.60	-1,854.0	1,511.7	210.0	143.4	66.59	3.154	
6,500.0	5,890.7	6,525.3	5,970.2	55.1	52.3	-149.28	-1,888.5	1,540.2	212.6	144.5	68.13	3.120	
6,600.0	5,979.3	6,625.3	6,059.6	56.1	53.3	-148.97	-1,923.0	1,568.8	215.2	145.5	69.68	3.088	
6,700.0	6,068.0	6,725.2	6,148.9	57.1	54.2	-148.67	-1,957.5	1,597.3	217.8	146.6	71.23	3.058	
6,800.0	6,156.7	6,825.2	6,238.3	58.0	55.2	-148.38	-1,992.0	1,625.9	220.4	147.6	72.78	3.028	
6,900.0	6,245.7	6,925.0	6,327.6	59.0	56.1	-154.02	-2,026.4	1,653.9	223.0	148.6	74.44	2.996	
7,000.0	6,336.8	7,024.6	6,418.9	59.6	56.7	-170.03	-2,061.8	1,672.3	225.7	149.6	76.05	2.968	
7,100.0	6,428.9	7,124.8	6,512.0	60.1	57.2	171.93	-2,098.1	1,676.9	228.5	151.2	77.26	2.957	
7,200.0	6,520.1	7,225.5	6,605.3	60.4	57.5	155.70	-2,134.6	1,667.5	231.3	153.2	78.05	2.963	
7,300.0	6,608.7	7,326.7	6,696.8	60.6	57.7	143.44	-2,170.6	1,643.9	234.0	155.6	78.43	2.984	
7,400.0	6,692.9	7,428.4	6,784.7	60.7	57.8	134.92	-2,205.5	1,606.5	236.7	158.3	78.43	3.018	
7,500.0	6,771.1	7,530.6	6,867.0	60.8	57.8	129.11	-2,238.3	1,555.8	239.3	161.1	78.13	3.063	
7,600.0	6,841.8	7,633.3	6,942.1	60.7	57.7	125.12	-2,268.4	1,492.8	241.6	164.0	77.60	3.113	
7,700.0	6,903.7	7,736.3	7,008.2	60.6	57.6	122.35	-2,295.2	1,418.5	243.6	166.7	76.97	3.165	
7,800.0	6,955.4	7,839.7	7,063.8	60.4	57.4	120.43	-2,318.1	1,334.5	245.3	169.0	76.36	3.213	
7,900.0	6,996.1	7,943.4	7,107.6	60.2	57.1	119.11	-2,336.4	1,242.5	246.7	170.8	75.91	3.250	
8,000.0	7,024.8	8,047.2	7,138.6	60.0	56.9	118.25	-2,349.9	1,144.4	247.6	171.9	75.74	3.269	
8,100.0	7,041.1	8,151.2	7,156.0	59.7	56.6	117.75	-2,358.1	1,042.3	248.2	172.2	75.95	3.267	
8,200.0	7,045.0	8,254.1	7,160.0	59.4	56.3	117.59	-2,361.0	939.5	248.3	171.6	76.68	3.238	
8,300.0	7,045.0	8,354.1	7,160.0	59.1	56.1	117.59	-2,362.4	839.6	248.3	170.1	78.12	3.178	
8,400.0	7,045.0	8,454.1	7,160.0	58.9	55.9	117.59	-2,363.7	739.6	248.3	168.4	79.83	3.110	
8,500.0	7,045.0	8,554.1	7,160.0	58.7	55.7	117.59	-2,365.1	639.6	248.3	166.4	81.82	3.034	
8,600.0	7,045.0	8,654.1	7,160.0	58.5	55.6	117.59	-2,366.4	539.6	248.3	164.2	84.05	2.954	
8,700.0	7,045.0	8,754.1	7,160.0	58.4	55.6	117.59	-2,367.8	439.6	248.3	161.7	86.52	2.869	
8,800.0	7,045.0	8,854.1	7,160.0	58.3	55.6	117.59	-2,369.2	339.6	248.3	159.1	89.21	2.783	
8,900.0	7,045.0	8,954.1	7,160.0	58.2	55.7	117.59	-2,370.5	239.6	248.3	156.2	92.08	2.696	
8,917.7	7,045.0	8,971.8	7,160.0	58.3	55.8	117.59	-2,370.8	221.9	248.3	155.6	92.62	2.681	
9,000.0	7,045.0	9,054.1	7,160.0	58.3	56.0	117.59	-2,371.9	139.6	248.3	153.1	95.14	2.609	
9,100.0	7,045.0	9,154.1	7,160.0	58.4	56.4	117.59	-2,373.3	39.6	248.3	149.9	98.35	2.524	
9,200.0	7,045.0	9,254.1	7,160.0	58.7	57.0	117.59	-2,374.6	-60.4	248.3	146.5	101.72	2.441	
9,300.0	7,045.0	9,354.1	7,160.0	59.1	57.8	117.59	-2,376.0	-160.4	248.3	143.1	105.21	2.360	
9,400.0	7,045.0	9,454.1	7,160.0	59.8	58.9	117.59	-2,377.3	-260.3	248.3	139.4	108.82	2.281	
9,500.0	7,045.0	9,554.1	7,160.0	60.8	60.3	117.59	-2,378.7	-360.3	248.3	135.7	112.54	2.206	
9,600.0	7,045.0	9,654.1	7,160.0	62.2	61.9	117.59	-2,380.1	-460.3	248.3	131.9	116.35	2.134	
9,700.0	7,045.0	9,754.1	7,160.0	63.8	63.8	117.59	-2,381.4	-560.3	248.3	128.0	120.26	2.064	
9,800.0	7,045.0	9,854.1	7,160.0	65.7	65.8	117.59	-2,382.8	-660.3	248.3	124.0	124.24	1.998	
9,819.1	7,045.0	9,873.3	7,160.0	66.1	66.2	117.59	-2,383.0	-679.4	248.3	123.3	125.01	1.986	
9,900.0	7,045.0	9,954.1	7,160.0	67.7	67.9	117.59	-2,384.1	-760.3	248.3	120.0	128.29	1.935	
10,000.0	7,045.0	10,054.1	7,160.0	69.9	70.1	117.59	-2,385.5	-860.3	248.3	115.8	132.42	1.875	
10,100.0	7,045.0	10,154.1	7,160.0	72.2	72.4	117.59	-2,386.9	-960.3	248.3	111.7	136.60	1.818	

CC - Min centre to center distance or convergent point, SF - min separation factor, ES - min ellipse separation

SRC Kiehn Pad Sec.4-T4N-R68W - SRC Weis 12-9CHZ - Wellbore #1 - Plan #1 (10-2-14)												Offset Site Error:	0.0 ft
Survey Program: 0-MWD												Offset Well Error:	0.0 ft
Reference		Offset		Semi Major Axis			Distance						Warning
Measured Depth Depth (ft)	Vertical Depth (ft)	Measured Depth Depth (ft)	Vertical Depth (ft)	Reference (ft)	Offset (ft)	Highside Toolface (°)	Offset Wellbore Centre +N/-S (ft)	+E/-W (ft)	Between Centres (ft)	Between Ellipses (ft)	Minimum Separation (ft)	Separation Factor	
10,200.0	7,045.0	10,254.1	7,160.0	74.5	74.8	117.59	-2,388.2	-1,060.3	248.3	107.4	140.83	1.763	
10,300.0	7,045.0	10,354.1	7,160.0	76.9	77.1	117.59	-2,389.6	-1,160.3	248.3	103.1	145.11	1.711	
10,400.0	7,045.0	10,454.1	7,160.0	79.4	79.6	117.59	-2,391.0	-1,260.2	248.3	98.8	149.44	1.661	
10,415.3	7,045.0	10,469.5	7,160.0	79.8	80.0	117.59	-2,391.2	-1,275.6	248.3	98.2	150.11	1.654	
10,500.0	7,045.0	10,554.1	7,160.0	81.9	82.0	117.59	-2,392.3	-1,360.2	248.3	94.4	153.81	1.614	
10,600.0	7,045.0	10,654.1	7,160.0	84.4	84.5	117.59	-2,393.7	-1,460.2	248.3	90.0	158.22	1.569	
10,700.0	7,045.0	10,754.1	7,160.0	86.9	87.1	117.59	-2,395.0	-1,560.2	248.3	85.6	162.67	1.526	
10,800.0	7,045.0	10,854.1	7,160.0	89.4	89.6	117.59	-2,396.4	-1,660.2	248.3	81.1	167.14	1.485	Level 3
10,900.0	7,045.0	10,954.1	7,160.0	92.0	92.1	117.59	-2,397.8	-1,760.2	248.3	76.6	171.65	1.446	Level 3
11,000.0	7,045.0	11,054.1	7,160.0	94.6	94.7	117.59	-2,399.1	-1,860.2	248.3	72.1	176.18	1.409	Level 3
11,100.0	7,045.0	11,154.1	7,160.0	97.2	97.3	117.59	-2,400.5	-1,960.2	248.3	67.5	180.74	1.374	Level 3
11,200.0	7,045.0	11,254.1	7,160.0	99.8	99.9	117.59	-2,401.8	-2,060.2	248.3	62.9	185.32	1.340	Level 3
11,300.0	7,045.0	11,354.1	7,160.0	102.4	102.5	117.59	-2,403.2	-2,160.2	248.3	58.3	189.92	1.307	Level 3
11,400.0	7,045.0	11,454.1	7,160.0	105.0	105.1	117.59	-2,404.6	-2,260.2	248.3	53.7	194.55	1.276	Level 3
11,500.0	7,045.0	11,554.1	7,160.0	107.6	107.8	117.59	-2,405.9	-2,360.1	248.3	49.1	199.19	1.246	Level 2
11,600.0	7,045.0	11,654.1	7,160.0	110.3	110.4	117.59	-2,407.3	-2,460.1	248.3	44.4	203.85	1.218	Level 2
11,700.0	7,045.0	11,754.1	7,160.0	112.9	113.0	117.59	-2,408.7	-2,560.1	248.3	39.7	208.52	1.191	Level 2
11,800.0	7,045.0	11,854.1	7,160.0	115.6	115.7	117.59	-2,410.0	-2,660.1	248.3	35.0	213.21	1.164	Level 2
11,900.0	7,045.0	11,954.1	7,160.0	118.2	118.4	117.59	-2,411.4	-2,760.1	248.3	30.3	217.92	1.139	Level 2
11,910.5	7,045.0	11,964.6	7,160.0	118.5	118.6	117.59	-2,411.5	-2,770.6	248.3	29.8	218.41	1.137	Level 2
12,000.0	7,045.0	12,054.1	7,160.0	120.9	121.0	117.59	-2,412.7	-2,860.1	248.3	25.6	222.64	1.115	Level 2
12,100.0	7,045.0	12,154.1	7,160.0	123.6	123.7	117.59	-2,414.1	-2,960.1	248.3	20.9	227.37	1.092	Level 2
12,200.0	7,045.0	12,254.1	7,160.0	126.3	125.8	117.59	-2,415.5	-3,060.1	248.3	16.7	231.60	1.072	Level 2
12,218.8	7,045.0	12,273.0	7,160.0	126.8	126.1	117.59	-2,415.7	-3,078.9	248.3	15.9	232.32	1.069	Level 2
12,235.3	7,045.0	12,287.5	7,160.0	127.2	126.4	117.59	-2,415.9	-3,093.4	248.3	15.4	232.91	1.066	Level 2, ES, SF

<b>Company:</b>	Synergy Resources	<b>Local Co-ordinate Reference:</b>	Well SRC Weis K-9NHZ
<b>Project:</b>	SEC.4-T4N-R68W	<b>TVD Reference:</b>	WELL @ 5077.0ft (RKB - 13')
<b>Reference Site:</b>	SRC Kiehn Pad Sec.4-T4N-R68W	<b>MD Reference:</b>	WELL @ 5077.0ft (RKB - 13')
<b>Site Error:</b>	0.0ft	<b>North Reference:</b>	True
<b>Reference Well:</b>	SRC Weis K-9NHZ	<b>Survey Calculation Method:</b>	Minimum Curvature
<b>Well Error:</b>	0.0ft	<b>Output errors are at</b>	2.00 sigma
<b>Reference Wellbore</b>	Wellbore #1	<b>Database:</b>	Landmark
<b>Reference Design:</b>	Plan #1 (10-2-14)	<b>Offset TVD Reference:</b>	Offset Datum

Offset Design SRC Kiehn Pad Sec.4-T4N-R68W - SRC Weis 12-9NHZ - Wellbore #1 - Plan #1 (10-2-14)													Offset Site Error:	0.0 ft
Survey Program: 0-MWD													Offset Well Error:	0.0 ft
Measured Depth (ft)	Vertical Depth (ft)	Measured Depth (ft)	Vertical Depth (ft)	Reference (ft)	Offset (ft)	Semi Major Axis Highside Toolface (°)	Offset Wellbore Centre +N/-S (ft)	+E/-W (ft)	Between Centres (ft)	Between Ellipses (ft)	Minimum Separation (ft)	Separation Factor	Warning	
0.0	0.0	0.0	0.0	0.0	0.0	-90.92	-0.7	-45.2	45.2					
100.0	100.0	100.0	100.0	0.1	0.1	-90.92	-0.7	-45.2	45.2	44.9	0.22	200.962		
200.0	200.0	200.0	200.0	0.3	0.3	-90.92	-0.7	-45.2	45.2	44.5	0.67	66.987 CC, ES		
300.0	300.0	300.0	300.0	0.5	0.6	127.46	-0.7	-45.2	46.2	45.1	1.11	41.808		
400.0	399.8	399.8	399.8	0.8	0.8	132.22	-0.7	-45.2	49.6	48.0	1.54	32.150		
500.0	499.5	499.5	499.5	1.0	1.0	138.76	-0.7	-45.2	55.8	53.8	2.00	27.884		
600.0	598.7	598.7	598.7	1.3	1.2	145.68	-0.7	-45.2	65.5	63.0	2.47	26.470		
700.0	697.5	697.5	697.5	1.6	1.5	151.95	-0.7	-45.2	78.9	76.0	2.95	26.753		
800.0	795.6	798.8	798.8	2.0	1.7	157.02	-2.0	-44.0	94.7	91.2	3.40	27.819		
900.0	893.1	900.8	900.6	2.5	1.9	160.83	-5.9	-40.4	110.7	106.9	3.83	28.876		
1,000.0	989.6	1,003.5	1,002.9	3.0	2.1	163.84	-12.4	-34.2	127.0	122.7	4.28	29.659		
1,100.0	1,085.3	1,106.8	1,105.4	3.6	2.3	166.33	-21.8	-25.5	143.4	138.6	4.74	30.219		
1,200.0	1,179.8	1,210.7	1,208.0	4.2	2.6	168.45	-33.9	-14.1	159.7	154.5	5.22	30.593		
1,300.0	1,273.2	1,315.4	1,310.6	4.9	3.0	170.31	-48.8	-0.2	176.1	170.4	5.72	30.810		
1,400.0	1,365.2	1,420.7	1,413.1	5.7	3.4	171.97	-66.6	16.5	192.4	186.2	6.23	30.892		
1,500.0	1,455.8	1,526.6	1,515.2	6.6	3.9	173.49	-87.2	35.8	208.6	201.9	6.76	30.855		
1,600.0	1,545.0	1,633.3	1,616.9	7.5	4.5	174.91	-110.7	57.8	224.6	217.3	7.33	30.625		
1,700.0	1,633.7	1,741.0	1,718.2	8.4	5.1	176.22	-137.3	82.7	238.0	230.0	7.97	29.861		
1,800.0	1,722.4	1,849.6	1,819.0	9.4	5.9	177.44	-166.9	110.4	247.8	239.1	8.65	28.654		
1,900.0	1,811.0	1,958.8	1,918.7	10.3	6.8	178.64	-199.4	140.8	253.8	244.5	9.36	27.120		
2,000.0	1,899.7	2,068.2	2,016.8	11.3	7.7	179.87	-234.7	173.9	256.2	246.1	10.11	25.348		
2,100.0	1,988.4	2,168.1	2,105.5	12.3	8.6	-178.97	-268.2	205.3	256.8	246.0	10.86	23.650		
2,200.0	2,077.1	2,268.0	2,194.2	13.2	9.5	-177.83	-301.7	236.6	257.5	245.9	11.64	22.127		
2,300.0	2,165.8	2,367.8	2,282.9	14.2	10.5	-176.69	-335.2	267.9	258.4	245.9	12.45	20.751		
2,400.0	2,254.5	2,467.7	2,371.7	15.2	11.4	-175.56	-368.6	299.3	259.3	246.0	13.30	19.500		
2,500.0	2,343.2	2,567.6	2,460.4	16.1	12.4	-174.43	-402.1	330.6	260.3	246.2	14.18	18.359		
2,600.0	2,431.9	2,667.4	2,549.1	17.1	13.3	-173.32	-435.6	362.0	261.5	246.4	15.10	17.314		
2,700.0	2,520.5	2,767.3	2,637.8	18.1	14.3	-172.21	-469.1	393.3	262.7	246.6	16.06	16.354		
2,800.0	2,609.2	2,867.1	2,726.5	19.0	15.3	-171.12	-502.5	424.6	264.0	247.0	17.07	15.470		
2,900.0	2,697.9	2,967.0	2,815.2	20.0	16.2	-170.04	-536.0	456.0	265.4	247.3	18.11	14.654		
3,000.0	2,786.6	3,066.9	2,904.0	21.0	17.2	-168.97	-569.5	487.3	267.0	247.8	19.20	13.900		
3,100.0	2,875.3	3,166.7	2,992.7	22.0	18.2	-167.91	-603.0	518.7	268.6	248.2	20.34	13.204		
3,200.0	2,964.0	3,266.6	3,081.4	22.9	19.1	-166.86	-636.4	550.0	270.3	248.7	21.52	12.559		
3,300.0	3,052.7	3,366.5	3,170.1	23.9	20.1	-165.83	-669.9	581.3	272.0	249.3	22.74	11.961		
3,400.0	3,141.4	3,466.3	3,258.8	24.9	21.1	-164.81	-703.4	612.7	273.9	249.9	24.01	11.408		
3,500.0	3,230.0	3,566.2	3,347.5	25.8	22.0	-163.81	-736.8	644.0	275.9	250.6	25.32	10.895		
3,600.0	3,318.7	3,666.1	3,436.2	26.8	23.0	-162.82	-770.3	675.4	277.9	251.2	26.68	10.419		
3,700.0	3,407.4	3,765.9	3,525.0	27.8	24.0	-161.85	-803.8	706.7	280.0	252.0	28.07	9.977		
3,800.0	3,496.1	3,865.8	3,613.7	28.8	25.0	-160.89	-837.3	738.0	282.3	252.7	29.50	9.567		
3,900.0	3,584.8	3,965.7	3,702.4	29.7	25.9	-159.94	-870.7	769.4	284.5	253.6	30.98	9.186		
4,000.0	3,673.5	4,065.5	3,791.1	30.7	26.9	-159.01	-904.2	800.7	286.9	254.4	32.49	8.831		
4,100.0	3,762.2	4,165.4	3,879.8	31.7	27.9	-158.10	-937.7	832.0	289.3	255.3	34.03	8.502		
4,200.0	3,850.9	4,265.3	3,968.5	32.7	28.9	-157.20	-971.2	863.4	291.8	256.2	35.61	8.195		
4,300.0	3,939.5	4,365.1	4,057.2	33.6	29.9	-156.32	-1,004.6	894.7	294.4	257.2	37.22	7.909		
4,400.0	4,028.2	4,465.0	4,146.0	34.6	30.8	-155.45	-1,038.1	926.1	297.1	258.2	38.87	7.643		
4,500.0	4,116.9	4,564.8	4,234.7	35.6	31.8	-154.60	-1,071.6	957.4	299.8	259.2	40.54	7.394		
4,600.0	4,205.6	4,664.7	4,323.4	36.6	32.8	-153.76	-1,105.1	988.7	302.5	260.3	42.24	7.162		
4,700.0	4,294.3	4,764.6	4,412.1	37.5	33.8	-152.94	-1,138.5	1,020.1	305.4	261.4	43.97	6.945		
4,800.0	4,383.0	4,864.4	4,500.8	38.5	34.7	-152.13	-1,172.0	1,051.4	308.3	262.6	45.72	6.742		
4,900.0	4,471.7	4,964.3	4,589.5	39.5	35.7	-151.34	-1,205.5	1,082.8	311.3	263.8	47.50	6.552		
5,000.0	4,560.4	5,064.2	4,678.2	40.5	36.7	-150.56	-1,238.9	1,114.1	314.3	265.0	49.30	6.375		
5,100.0	4,649.0	5,164.0	4,767.0	41.4	37.7	-149.80	-1,272.4	1,145.4	317.4	266.2	51.12	6.208		

CC - Min centre to center distance or convergent point, SF - min separation factor, ES - min ellipse separation

<b>Company:</b>	Synergy Resources	<b>Local Co-ordinate Reference:</b>	Well SRC Weis K-9NHZ
<b>Project:</b>	SEC.4-T4N-R68W	<b>TVD Reference:</b>	WELL @ 5077.0ft (RKB - 13')
<b>Reference Site:</b>	SRC Kiehn Pad Sec.4-T4N-R68W	<b>MD Reference:</b>	WELL @ 5077.0ft (RKB - 13')
<b>Site Error:</b>	0.0ft	<b>North Reference:</b>	True
<b>Reference Well:</b>	SRC Weis K-9NHZ	<b>Survey Calculation Method:</b>	Minimum Curvature
<b>Well Error:</b>	0.0ft	<b>Output errors are at</b>	2.00 sigma
<b>Reference Wellbore</b>	Wellbore #1	<b>Database:</b>	Landmark
<b>Reference Design:</b>	Plan #1 (10-2-14)	<b>Offset TVD Reference:</b>	Offset Datum

Offset Design												Offset Site Error:	0.0ft
Survey Program: 0-MWD												Offset Well Error:	0.0ft
Reference		Offset		Semi Major Axis			Distance						
Measured Depth (ft)	Vertical Depth (ft)	Measured Depth (ft)	Vertical Depth (ft)	Reference (ft)	Offset (ft)	Highside Toolface (°)	Offset Wellbore Centre +N/-S (ft)	+E/-W (ft)	Between Centres (ft)	Between Ellipses (ft)	Minimum Separation (ft)	Separation Factor	Warning
5,200.0	4,737.7	5,263.9	4,855.7	42.4	38.7	-149.06	-1,305.9	1,176.8	320.5	267.5	52.96	6.051	
5,300.0	4,826.4	5,363.8	4,944.4	43.4	39.6	-148.32	-1,339.4	1,208.1	323.7	268.8	54.82	5.904	
5,400.0	4,915.1	5,463.6	5,033.1	44.4	40.6	-147.61	-1,372.8	1,239.5	326.9	270.2	56.70	5.765	
5,500.0	5,003.8	5,563.5	5,121.8	45.4	41.6	-146.90	-1,406.3	1,270.8	330.2	271.6	58.59	5.635	
5,600.0	5,092.5	5,663.4	5,210.5	46.3	42.6	-146.21	-1,439.8	1,302.1	333.5	273.0	60.50	5.513	
5,700.0	5,181.2	5,763.2	5,299.3	47.3	43.6	-145.54	-1,473.3	1,333.5	336.9	274.5	62.43	5.397	
5,800.0	5,269.9	5,863.1	5,388.0	48.3	44.5	-144.88	-1,506.7	1,364.8	340.3	276.0	64.36	5.288	
5,900.0	5,358.5	5,962.9	5,476.7	49.3	45.5	-144.23	-1,540.2	1,396.1	343.8	277.5	66.31	5.185	
6,000.0	5,447.2	6,062.8	5,565.4	50.2	46.5	-143.59	-1,573.7	1,427.5	347.3	279.1	68.27	5.087	
6,100.0	5,535.9	6,162.7	5,654.1	51.2	47.5	-142.97	-1,607.2	1,458.8	350.9	280.7	70.25	4.995	
6,200.0	5,624.6	6,262.5	5,742.8	52.2	48.5	-142.36	-1,640.6	1,490.2	354.5	282.3	72.23	4.908	
6,300.0	5,713.3	6,362.4	5,831.5	53.2	49.4	-141.76	-1,674.1	1,521.5	358.1	283.9	74.22	4.826	
6,400.0	5,802.0	6,462.3	5,920.3	54.1	50.4	-141.17	-1,707.6	1,552.8	361.8	285.6	76.22	4.747	
6,500.0	5,890.7	6,562.1	6,009.0	55.1	51.4	-140.60	-1,741.1	1,584.2	365.5	287.3	78.22	4.673	
6,600.0	5,979.3	6,662.0	6,097.7	56.1	52.4	-140.04	-1,774.5	1,615.5	369.3	289.0	80.24	4.602	
6,700.0	6,068.0	6,763.3	6,187.7	57.1	53.3	-139.53	-1,808.5	1,647.0	373.0	290.8	82.20	4.538	
6,800.0	6,156.7	6,869.6	6,284.8	58.0	54.0	-140.62	-1,845.3	1,669.7	375.6	293.4	82.22	4.568	
6,900.0	6,245.7	6,972.1	6,380.2	59.0	54.5	-149.83	-1,881.6	1,676.8	377.3	297.7	79.63	4.738	
7,000.0	6,336.8	7,071.0	6,472.3	59.6	54.8	-170.08	-1,916.9	1,669.8	380.2	304.0	76.14	4.993	
7,100.0	6,428.9	7,167.1	6,560.0	60.1	55.0	167.76	-1,950.6	1,650.1	384.3	311.6	72.67	5.288	
7,200.0	6,520.1	7,260.6	6,642.2	60.4	55.1	147.60	-1,982.4	1,619.0	389.5	319.9	69.56	5.599	
7,300.0	6,608.7	7,350.0	6,716.6	60.6	55.1	131.73	-2,011.3	1,578.7	395.4	328.3	67.10	5.893	
7,400.0	6,692.9	7,441.2	6,786.9	60.7	55.0	119.82	-2,038.8	1,527.8	401.9	336.6	65.24	6.160	
7,500.0	6,771.1	7,528.8	6,848.3	60.8	54.9	111.03	-2,063.0	1,470.2	408.5	344.3	64.19	6.364	
7,600.0	6,841.8	7,615.0	6,901.7	60.7	54.7	104.44	-2,084.2	1,406.1	414.9	351.0	63.92	6.491	
7,700.0	6,903.7	7,700.0	6,947.0	60.6	54.6	99.48	-2,102.4	1,336.5	420.9	356.4	64.48	6.527	
7,800.0	6,955.4	7,784.0	6,983.9	60.4	54.4	95.78	-2,117.4	1,262.6	426.1	360.2	65.93	6.463	
7,900.0	6,996.1	7,867.3	7,012.2	60.2	54.2	93.10	-2,129.2	1,185.2	430.4	362.2	68.24	6.308	
8,000.0	7,024.8	7,950.0	7,031.8	60.0	54.0	91.29	-2,137.7	1,105.4	433.6	362.3	71.32	6.080	
8,100.0	7,041.1	8,032.4	7,042.7	59.7	53.8	90.27	-2,142.9	1,023.9	435.5	360.5	75.02	5.806	
8,200.0	7,045.0	8,119.4	7,045.0	59.4	53.6	90.00	-2,144.9	937.0	436.2	357.8	78.41	5.562	
8,300.0	7,045.0	8,219.4	7,045.0	59.1	53.5	90.00	-2,146.1	837.0	436.3	356.5	79.79	5.467	
8,400.0	7,045.0	8,319.4	7,045.0	58.9	53.3	90.00	-2,147.4	737.0	436.3	354.8	81.53	5.352	
8,500.0	7,045.0	8,419.4	7,045.0	58.7	53.3	90.00	-2,148.7	637.0	436.4	352.8	83.62	5.219	
8,600.0	7,045.0	8,519.4	7,045.0	58.5	53.3	90.00	-2,150.0	537.0	436.5	350.5	86.01	5.075	
8,700.0	7,045.0	8,619.4	7,045.0	58.4	53.5	90.00	-2,151.2	437.0	436.6	347.9	88.70	4.922	
8,800.0	7,045.0	8,719.4	7,045.0	58.3	53.7	90.00	-2,152.5	337.0	436.7	345.0	91.65	4.765	
8,900.0	7,045.0	8,819.4	7,045.0	58.2	54.1	90.00	-2,153.8	237.0	436.8	341.9	94.85	4.605	
9,000.0	7,045.0	8,919.4	7,045.0	58.3	54.6	90.00	-2,155.1	137.1	436.9	338.6	98.26	4.446	
9,100.0	7,045.0	9,019.4	7,045.0	58.4	55.4	90.00	-2,156.3	37.1	437.0	335.1	101.86	4.290	
9,200.0	7,045.0	9,119.4	7,045.0	58.7	56.3	90.00	-2,157.6	-62.9	437.0	331.4	105.64	4.137	
9,300.0	7,045.0	9,219.4	7,045.0	59.1	57.5	90.00	-2,158.9	-162.9	437.1	327.6	109.58	3.989	
9,400.0	7,045.0	9,319.4	7,045.0	59.8	59.0	90.00	-2,160.2	-262.9	437.2	323.6	113.65	3.847	
9,500.0	7,045.0	9,419.4	7,045.0	60.8	60.6	90.00	-2,161.4	-362.9	437.3	319.4	117.86	3.711	
9,600.0	7,045.0	9,519.4	7,045.0	62.2	62.4	90.00	-2,162.7	-462.9	437.4	315.2	122.17	3.580	
9,700.0	7,045.0	9,619.4	7,045.0	63.8	64.3	90.00	-2,164.0	-562.9	437.5	310.9	126.59	3.456	
9,800.0	7,045.0	9,719.4	7,045.0	65.7	66.4	90.00	-2,165.3	-662.9	437.6	306.5	131.10	3.338	
9,900.0	7,045.0	9,819.4	7,045.0	67.7	68.6	90.00	-2,166.5	-762.9	437.7	302.0	135.69	3.225	
10,000.0	7,045.0	9,919.4	7,045.0	69.9	70.8	90.00	-2,167.8	-862.9	437.7	297.4	140.35	3.119	
10,100.0	7,045.0	10,019.4	7,045.0	72.2	73.1	90.00	-2,169.1	-962.9	437.8	292.7	145.08	3.018	
10,200.0	7,045.0	10,119.4	7,045.0	74.5	75.4	90.00	-2,170.4	-1,062.9	437.9	288.0	149.87	2.922	
10,300.0	7,045.0	10,219.4	7,045.0	76.9	77.8	90.00	-2,171.6	-1,162.8	438.0	283.3	154.72	2.831	

CC - Min centre to center distance or convergent point, SF - min separation factor, ES - min ellipse separation

Offset Design													Offset Site Error:	
Survey Program: 0-MWD													Offset Well Error:	
Reference		Offset		Semi Major Axis			Distance							
Measured Depth (ft)	Vertical Depth (ft)	Measured Depth (ft)	Vertical Depth (ft)	Reference (ft)	Offset (ft)	Highside Toolface (°)	Offset Wellbore Centre +N/-S (ft)	+E/-W (ft)	Between Centres (ft)	Between Ellipses (ft)	Minimum Separation (ft)	Separation Factor	Warning	
10,400.0	7,045.0	10,319.4	7,045.0	79.4	80.3	90.00	-2,172.9	-1,262.8	438.1	278.5	159.62	2.745		
10,500.0	7,045.0	10,419.4	7,045.0	81.9	82.7	90.00	-2,174.2	-1,362.8	438.2	273.6	164.56	2.663		
10,600.0	7,045.0	10,519.4	7,045.0	84.4	85.2	90.00	-2,175.4	-1,462.8	438.3	268.7	169.54	2.585		
10,700.0	7,045.0	10,619.4	7,045.0	86.9	87.7	90.00	-2,176.7	-1,562.8	438.4	263.8	174.56	2.511		
10,800.0	7,045.0	10,719.4	7,045.0	89.4	90.2	90.00	-2,178.0	-1,662.8	438.4	258.8	179.62	2.441		
10,900.0	7,045.0	10,819.4	7,045.0	92.0	92.8	90.00	-2,179.3	-1,762.8	438.5	253.8	184.71	2.374		
11,000.0	7,045.0	10,919.4	7,045.0	94.6	95.4	90.00	-2,180.5	-1,862.8	438.6	248.8	189.82	2.311		
11,100.0	7,045.0	11,019.4	7,045.0	97.2	97.9	90.00	-2,181.8	-1,962.8	438.7	243.7	194.97	2.250		
11,200.0	7,045.0	11,119.4	7,045.0	99.8	100.5	90.00	-2,183.1	-2,062.8	438.8	238.7	200.14	2.192		
11,300.0	7,045.0	11,219.4	7,045.0	102.4	103.1	90.00	-2,184.4	-2,162.8	438.9	233.5	205.33	2.137		
11,400.0	7,045.0	11,319.4	7,045.0	105.0	105.7	90.00	-2,185.6	-2,262.8	439.0	228.4	210.54	2.085		
11,500.0	7,045.0	11,419.4	7,045.0	107.6	108.4	90.00	-2,186.9	-2,362.7	439.0	223.3	215.78	2.035		
11,600.0	7,045.0	11,519.4	7,045.0	110.3	111.0	90.00	-2,188.2	-2,462.7	439.1	218.1	221.03	1.987		
11,700.0	7,045.0	11,619.4	7,045.0	112.9	113.6	90.00	-2,189.5	-2,562.7	439.2	212.9	226.30	1.941		
11,800.0	7,045.0	11,719.4	7,045.0	115.6	116.3	90.00	-2,190.7	-2,662.7	439.3	207.7	231.58	1.897		
11,900.0	7,045.0	11,819.4	7,045.0	118.2	119.0	90.00	-2,192.0	-2,762.7	439.4	202.5	236.88	1.855		
12,000.0	7,045.0	11,919.4	7,045.0	120.9	121.6	90.00	-2,193.3	-2,862.7	439.5	197.3	242.19	1.815		
12,100.0	7,045.0	12,019.4	7,045.0	123.6	124.3	90.00	-2,194.6	-2,962.7	439.6	192.1	247.52	1.776		
12,200.0	7,045.0	12,119.4	7,045.0	126.3	127.0	90.00	-2,195.8	-3,062.7	439.7	186.8	252.86	1.739		
12,214.2	7,045.0	12,133.6	7,045.0	126.6	127.3	90.00	-2,196.0	-3,076.9	439.7	186.1	253.62	1.734		
12,235.3	7,045.0	12,150.7	7,045.0	127.2	127.8	90.00	-2,196.2	-3,094.0	439.7	185.1	254.64	1.727 SF		



<b>Company:</b>	Synergy Resources	<b>Local Co-ordinate Reference:</b>	Well SRC Weis K-9NHZ
<b>Project:</b>	SEC.4-T4N-R68W	<b>TVD Reference:</b>	WELL @ 5077.0ft (RKB - 13')
<b>Reference Site:</b>	SRC Kiehn Pad Sec.4-T4N-R68W	<b>MD Reference:</b>	WELL @ 5077.0ft (RKB - 13')
<b>Site Error:</b>	0.0ft	<b>North Reference:</b>	True
<b>Reference Well:</b>	SRC Weis K-9NHZ	<b>Survey Calculation Method:</b>	Minimum Curvature
<b>Well Error:</b>	0.0ft	<b>Output errors are at</b>	2.00 sigma
<b>Reference Wellbore</b>	Wellbore #1	<b>Database:</b>	Landmark
<b>Reference Design:</b>	Plan #1 (10-2-14)	<b>Offset TVD Reference:</b>	Offset Datum

Offset Design													Offset Site Error:	0.0 ft
Survey Program: 0-MWD													Offset Well Error:	0.0 ft
Reference		Offset		Semi Major Axis			Distance							Warning
Measured Depth (ft)	Vertical Depth (ft)	Measured Depth (ft)	Vertical Depth (ft)	Reference (ft)	Offset (ft)	Highside Toolface (°)	Offset Wellbore Centre +N/-S (ft)	+E/-W (ft)	Between Centres (ft)	Between Ellipses (ft)	Minimum Separation (ft)	Separation Factor		
0.0	0.0	0.0	0.0	0.0	0.0	-90.93	-1.1	-67.5	67.5					
100.0	100.0	100.0	100.0	0.1	0.1	-90.93	-1.1	-67.5	67.5	67.3	0.22	300.202		
200.0	200.0	200.0	200.0	0.3	0.3	-90.93	-1.1	-67.5	67.5	66.8	0.67	100.067 CC, ES		
300.0	300.0	300.0	300.0	0.5	0.6	126.89	-1.1	-67.5	68.5	67.4	1.11	61.986		
400.0	399.8	399.8	399.8	0.8	0.8	130.18	-1.1	-67.5	71.8	70.2	1.54	46.561		
500.0	499.5	499.5	499.5	1.0	1.0	135.00	-1.1	-67.5	77.7	75.7	2.00	38.800		
600.0	598.7	598.7	598.7	1.3	1.2	140.57	-1.1	-67.5	86.8	84.3	2.48	34.980		
700.0	697.5	697.5	697.5	1.6	1.5	146.14	-1.1	-67.5	99.4	96.4	2.97	33.497		
800.0	795.6	795.6	795.6	2.0	1.7	151.23	-1.1	-67.5	115.8	112.3	3.46	33.510		
900.0	893.1	893.1	893.1	2.5	1.9	155.60	-1.1	-67.5	136.0	132.1	3.94	34.509		
1,000.0	989.6	994.8	994.8	3.0	2.1	159.33	-2.2	-66.3	158.6	154.2	4.41	35.996		
1,100.0	1,085.3	1,097.9	1,097.7	3.6	2.3	162.34	-5.8	-62.5	181.4	176.6	4.85	37.436		
1,200.0	1,179.8	1,201.8	1,201.2	4.2	2.5	164.85	-12.0	-55.9	204.4	199.1	5.30	38.579		
1,300.0	1,273.2	1,306.7	1,305.3	4.9	2.8	167.02	-20.8	-46.5	227.5	221.7	5.76	39.459		
1,400.0	1,365.2	1,412.5	1,409.8	5.7	3.0	168.95	-32.4	-34.1	250.5	244.3	6.24	40.119		
1,500.0	1,455.8	1,519.3	1,514.5	6.6	3.4	170.70	-46.7	-18.9	273.5	266.8	6.74	40.584		
1,600.0	1,545.0	1,627.1	1,619.3	7.5	3.8	172.32	-63.9	-0.6	296.4	289.1	7.27	40.786		
1,700.0	1,633.7	1,736.5	1,724.6	8.4	4.3	173.84	-84.1	20.9	316.7	308.8	7.86	40.281		
1,800.0	1,722.4	1,847.4	1,830.2	9.4	4.9	175.23	-107.4	45.7	333.4	324.9	8.49	39.271		
1,900.0	1,811.0	1,959.5	1,935.6	10.3	5.6	176.56	-133.7	73.7	346.4	337.2	9.14	37.906		
2,000.0	1,899.7	2,072.6	2,040.2	11.3	6.4	177.89	-163.1	105.0	355.6	345.8	9.84	36.154		
2,100.0	1,988.4	2,186.3	2,143.5	12.3	7.3	179.25	-195.5	139.5	361.2	350.6	10.58	34.144		
2,200.0	2,077.1	2,290.8	2,237.1	13.2	8.2	-179.46	-227.2	173.3	363.8	352.4	11.33	32.101		
2,300.0	2,165.8	2,390.4	2,326.3	14.2	9.0	-178.24	-257.7	205.7	366.3	354.2	12.11	30.257		
2,400.0	2,254.5	2,490.1	2,415.5	15.2	9.9	-177.03	-288.1	238.1	369.1	356.1	12.92	28.566		
2,500.0	2,343.2	2,589.7	2,504.7	16.1	10.8	-175.85	-318.6	270.6	372.0	358.2	13.77	27.012		
2,600.0	2,431.9	2,689.4	2,593.9	17.1	11.7	-174.68	-349.0	303.0	375.0	360.3	14.66	25.579		
2,700.0	2,520.5	2,789.1	2,683.1	18.1	12.7	-173.53	-379.4	335.4	378.2	362.6	15.59	24.255		
2,800.0	2,609.2	2,888.7	2,772.3	19.0	13.6	-172.40	-409.9	367.8	381.6	365.0	16.57	23.030		
2,900.0	2,697.9	2,988.4	2,861.5	20.0	14.5	-171.29	-440.3	400.2	385.1	367.5	17.59	21.895		
3,000.0	2,786.6	3,088.1	2,950.7	21.0	15.5	-170.20	-470.8	432.6	388.7	370.1	18.65	20.844		
3,100.0	2,875.3	3,187.7	3,039.8	22.0	16.4	-169.13	-501.2	465.0	392.5	372.7	19.75	19.870		
3,200.0	2,964.0	3,287.4	3,129.0	22.9	17.3	-168.08	-531.6	497.4	396.4	375.5	20.90	18.966		
3,300.0	3,052.7	3,387.0	3,218.2	23.9	18.3	-167.06	-562.1	529.8	400.4	378.4	22.09	18.128		
3,400.0	3,141.4	3,486.7	3,307.4	24.9	19.2	-166.05	-592.5	562.3	404.6	381.3	23.32	17.351		
3,500.0	3,230.0	3,586.4	3,396.6	25.8	20.2	-165.07	-623.0	594.7	408.9	384.3	24.59	16.630		
3,600.0	3,318.7	3,686.0	3,485.8	26.8	21.1	-164.10	-653.4	627.1	413.3	387.4	25.90	15.960		
3,700.0	3,407.4	3,785.7	3,575.0	27.8	22.0	-163.16	-683.9	659.5	417.8	390.6	27.24	15.338		
3,800.0	3,496.1	3,885.3	3,664.2	28.8	23.0	-162.23	-714.3	691.9	422.5	393.9	28.62	14.760		
3,900.0	3,584.8	3,985.0	3,753.4	29.7	23.9	-161.33	-744.7	724.3	427.2	397.2	30.04	14.223		
4,000.0	3,673.5	4,084.7	3,842.6	30.7	24.9	-160.44	-775.2	756.7	432.1	400.6	31.49	13.723		
4,100.0	3,762.2	4,184.3	3,931.8	31.7	25.8	-159.58	-805.6	789.1	437.0	404.1	32.97	13.258		
4,200.0	3,850.9	4,284.0	4,021.0	32.7	26.8	-158.73	-836.1	821.5	442.1	407.6	34.47	12.824		
4,300.0	3,939.5	4,383.7	4,110.2	33.6	27.7	-157.91	-866.5	854.0	447.2	411.2	36.01	12.420		
4,400.0	4,028.2	4,483.3	4,199.4	34.6	28.7	-157.10	-896.9	886.4	452.5	414.9	37.57	12.043		
4,500.0	4,116.9	4,583.0	4,288.5	35.6	29.6	-156.31	-927.4	918.8	457.8	418.6	39.16	11.691		
4,600.0	4,205.6	4,682.6	4,377.7	36.6	30.6	-155.54	-957.8	951.2	463.2	422.4	40.77	11.362		
4,700.0	4,294.3	4,782.3	4,466.9	37.5	31.5	-154.79	-988.3	983.6	468.7	426.3	42.40	11.053		
4,800.0	4,383.0	4,882.0	4,556.1	38.5	32.5	-154.06	-1,018.7	1,016.0	474.3	430.2	44.06	10.765		
4,900.0	4,471.7	4,981.6	4,645.3	39.5	33.4	-153.34	-1,049.1	1,048.4	479.9	434.2	45.73	10.495		
5,000.0	4,560.4	5,081.3	4,734.5	40.5	34.4	-152.64	-1,079.6	1,080.8	485.6	438.2	47.42	10.241		
5,100.0	4,649.0	5,181.0	4,823.7	41.4	35.3	-151.95	-1,110.0	1,113.3	491.4	442.3	49.13	10.002		

CC - Min centre to center distance or convergent point, SF - min separation factor, ES - min ellipse separation

Offset Design													Offset Site Error:		0.0 ft
Survey Program: 0-MWD													Offset Well Error:		0.0 ft
Reference		Offset		Semi Major Axis			Distance								
Measured Depth (ft)	Vertical Depth (ft)	Measured Depth (ft)	Vertical Depth (ft)	Reference (ft)	Offset (ft)	Highside Toolface (°)	Offset Wellbore Centre +N/-S (ft)	Offset Wellbore Centre +E/-W (ft)	Between Centres (ft)	Between Ellipses (ft)	Minimum Separation (ft)	Separation Factor	Warning		
5,200.0	4,737.7	5,280.6	4,912.9	42.4	36.3	-151.29	-1,140.5	1,145.7	497.3	446.4	50.85	9.778			
5,300.0	4,826.4	5,380.3	5,002.1	43.4	37.2	-150.63	-1,170.9	1,178.1	503.2	450.6	52.59	9.567			
5,400.0	4,915.1	5,479.9	5,091.3	44.4	38.2	-150.00	-1,201.3	1,210.5	509.2	454.8	54.35	9.369			
5,500.0	5,003.8	5,579.6	5,180.5	45.4	39.2	-149.37	-1,231.8	1,242.9	515.2	459.1	56.12	9.181			
5,600.0	5,092.5	5,679.3	5,269.7	46.3	40.1	-148.76	-1,262.2	1,275.3	521.3	463.4	57.90	9.004			
5,700.0	5,181.2	5,778.9	5,358.9	47.3	41.1	-148.17	-1,292.7	1,307.7	527.5	467.8	59.69	8.837			
5,800.0	5,269.9	5,878.6	5,448.0	48.3	42.0	-147.59	-1,323.1	1,340.1	533.7	472.2	61.49	8.680			
5,900.0	5,358.5	5,978.2	5,537.2	49.3	43.0	-147.02	-1,353.6	1,372.5	540.0	476.7	63.30	8.530			
6,000.0	5,447.2	6,077.9	5,626.4	50.2	43.9	-146.47	-1,384.0	1,405.0	546.3	481.2	65.13	8.389			
6,100.0	5,535.9	6,177.6	5,715.6	51.2	44.9	-145.93	-1,414.4	1,437.4	552.7	485.7	66.96	8.254			
6,200.0	5,624.6	6,277.2	5,804.8	52.2	45.8	-145.40	-1,444.9	1,469.8	559.1	490.3	68.80	8.127			
6,300.0	5,713.3	6,376.9	5,894.0	53.2	46.8	-144.88	-1,475.3	1,502.2	565.6	494.9	70.64	8.006			
6,400.0	5,802.0	6,476.6	5,983.2	54.1	47.7	-144.38	-1,505.8	1,534.6	572.1	499.6	72.50	7.891			
6,500.0	5,890.7	6,576.2	6,072.4	55.1	48.7	-143.88	-1,536.2	1,567.0	578.7	504.3	74.36	7.782			
6,600.0	5,979.3	6,675.9	6,161.6	56.1	49.6	-143.40	-1,566.6	1,599.4	585.3	509.0	76.23	7.678			
6,700.0	6,068.0	6,775.5	6,250.8	57.1	50.6	-142.93	-1,597.1	1,631.8	591.9	513.8	78.10	7.579			
6,800.0	6,156.7	6,879.7	6,345.4	58.0	51.4	-142.95	-1,629.4	1,660.6	598.3	519.0	79.30	7.544			
6,900.0	6,245.7	6,982.8	6,441.9	59.0	51.9	-150.51	-1,662.7	1,674.7	604.0	525.4	78.64	7.680			
7,000.0	6,336.8	7,083.5	6,537.0	59.6	52.2	-169.22	-1,695.6	1,674.3	610.2	533.2	77.01	7.924			
7,100.0	6,428.9	7,182.1	6,629.0	60.1	52.4	170.09	-1,727.7	1,660.1	616.8	541.6	75.20	8.202			
7,200.0	6,520.1	7,278.7	6,716.6	60.4	52.5	151.30	-1,758.3	1,633.5	623.7	550.3	73.44	8.493			
7,300.0	6,608.7	7,373.5	6,798.4	60.6	52.5	136.64	-1,787.2	1,595.4	630.8	558.8	71.91	8.771			
7,400.0	6,692.9	7,466.7	6,873.5	60.7	52.4	125.89	-1,813.8	1,547.1	637.7	567.0	70.74	9.015			
7,500.0	6,771.1	7,558.6	6,941.0	60.8	52.2	118.06	-1,838.0	1,489.8	644.4	574.4	70.02	9.202			
7,600.0	6,841.8	7,650.0	7,000.7	60.7	52.1	112.28	-1,859.6	1,424.1	650.6	580.8	69.83	9.317			
7,700.0	6,903.7	7,738.8	7,050.7	60.6	51.9	108.00	-1,877.8	1,353.1	656.1	585.9	70.22	9.344			
7,800.0	6,955.4	7,827.6	7,091.9	60.4	51.7	104.83	-1,893.2	1,276.0	660.9	589.7	71.21	9.281			
7,900.0	6,996.1	7,915.7	7,123.6	60.2	51.5	102.54	-1,905.2	1,194.8	664.7	591.9	72.78	9.133			
8,000.0	7,024.8	8,003.2	7,145.5	60.0	51.3	101.00	-1,914.0	1,110.5	667.5	592.6	74.86	8.917			
8,100.0	7,041.1	8,090.4	7,157.5	59.7	51.2	100.13	-1,919.3	1,024.4	669.2	591.8	77.34	8.652			
8,200.0	7,045.0	8,181.3	7,160.0	59.4	51.0	99.89	-1,921.4	933.6	669.6	589.9	79.70	8.401			
8,300.0	7,045.0	8,281.3	7,160.0	59.1	50.9	99.89	-1,922.8	833.6	669.6	588.5	81.14	8.252			
8,400.0	7,045.0	8,381.3	7,160.0	58.9	50.9	99.89	-1,924.1	733.6	669.6	586.7	82.92	8.076			
8,500.0	7,045.0	8,481.3	7,160.0	58.7	51.0	99.89	-1,925.5	633.6	669.6	584.6	85.01	7.876			
8,600.0	7,045.0	8,581.3	7,160.0	58.5	51.2	99.89	-1,926.8	533.6	669.6	582.2	87.41	7.661			
8,700.0	7,045.0	8,681.3	7,160.0	58.4	51.5	99.89	-1,928.2	433.6	669.6	579.5	90.08	7.433			
8,800.0	7,045.0	8,781.3	7,160.0	58.3	52.0	99.89	-1,929.6	333.6	669.6	576.6	93.01	7.200			
8,900.0	7,045.0	8,881.3	7,160.0	58.2	52.6	99.89	-1,930.9	233.6	669.6	573.5	96.16	6.963			
9,000.0	7,045.0	8,981.3	7,160.0	58.3	53.5	99.89	-1,932.3	133.6	669.6	570.1	99.52	6.728			
9,100.0	7,045.0	9,081.3	7,160.0	58.4	54.5	99.89	-1,933.6	33.6	669.6	566.5	103.07	6.497			
9,200.0	7,045.0	9,181.3	7,160.0	58.7	55.7	99.89	-1,935.0	-66.3	669.6	562.8	106.79	6.270			
9,300.0	7,045.0	9,281.3	7,160.0	59.1	57.2	99.89	-1,936.4	-166.3	669.6	559.0	110.66	6.051			
9,400.0	7,045.0	9,381.3	7,160.0	59.8	58.8	99.89	-1,937.7	-266.3	669.6	555.0	114.66	5.840			
9,500.0	7,045.0	9,481.3	7,160.0	60.8	60.6	99.89	-1,939.1	-366.3	669.6	550.8	118.79	5.637			
9,600.0	7,045.0	9,581.3	7,160.0	62.2	62.5	99.89	-1,940.5	-466.3	669.6	546.6	123.03	5.443			
9,700.0	7,045.0	9,681.3	7,160.0	63.8	64.5	99.89	-1,941.8	-566.3	669.6	542.3	127.36	5.258			
9,800.0	7,045.0	9,781.3	7,160.0	65.7	66.6	99.89	-1,943.2	-666.3	669.6	537.8	131.79	5.081			
9,900.0	7,045.0	9,881.3	7,160.0	67.7	68.8	99.89	-1,944.5	-766.3	669.6	533.3	136.29	4.913			
10,000.0	7,045.0	9,981.3	7,160.0	69.9	71.1	99.89	-1,945.9	-866.3	669.6	528.7	140.87	4.753			
10,100.0	7,045.0	10,081.3	7,160.0	72.2	73.4	99.89	-1,947.3	-966.3	669.6	524.1	145.52	4.602			
10,200.0	7,045.0	10,181.3	7,160.0	74.5	75.7	99.89	-1,948.6	-1,066.3	669.6	519.4	150.22	4.458			
10,300.0	7,045.0	10,281.3	7,160.0	76.9	78.1	99.89	-1,950.0	-1,166.2	669.6	514.6	154.98	4.321			



<b>Company:</b>	Synergy Resources	<b>Local Co-ordinate Reference:</b>	Well SRC Weis K-9NHZ
<b>Project:</b>	SEC.4-T4N-R68W	<b>TVD Reference:</b>	WELL @ 5077.0ft (RKB - 13')
<b>Reference Site:</b>	SRC Kiehn Pad Sec.4-T4N-R68W	<b>MD Reference:</b>	WELL @ 5077.0ft (RKB - 13')
<b>Site Error:</b>	0.0ft	<b>North Reference:</b>	True
<b>Reference Well:</b>	SRC Weis K-9NHZ	<b>Survey Calculation Method:</b>	Minimum Curvature
<b>Well Error:</b>	0.0ft	<b>Output errors are at</b>	2.00 sigma
<b>Reference Wellbore</b>	Wellbore #1	<b>Database:</b>	Landmark
<b>Reference Design:</b>	Plan #1 (10-2-14)	<b>Offset TVD Reference:</b>	Offset Datum

<b>Offset Design</b> SRC Kiehn Pad Sec.4-T4N-R68W - SRC Weis A-9CHZ - Wellbore #1 - Plan #1 (10-2-14)												<b>Offset Site Error:</b>	0.0 ft
Survey Program: 0-MWD												<b>Offset Well Error:</b>	0.0 ft
Reference		Offset		Semi Major Axis			Distance						
Measured Depth (ft)	Vertical Depth (ft)	Measured Depth (ft)	Vertical Depth (ft)	Reference (ft)	Offset (ft)	Highside Toolface (°)	Offset Wellbore Centre +N/-S (ft)	+E/-W (ft)	Between Centres (ft)	Between Ellipses (ft)	Minimum Separation (ft)	Separation Factor	Warning
10,400.0	7,045.0	10,381.3	7,160.0	79.4	80.5	99.89	-1,951.3	-1,266.2	669.6	509.8	159.79	4.191	
10,500.0	7,045.0	10,481.3	7,160.0	81.9	83.0	99.89	-1,952.7	-1,366.2	669.6	505.0	164.64	4.067	
10,600.0	7,045.0	10,581.3	7,160.0	84.4	85.5	99.89	-1,954.1	-1,466.2	669.6	500.1	169.54	3.950	
10,700.0	7,045.0	10,681.3	7,160.0	86.9	88.0	99.89	-1,955.4	-1,566.2	669.6	495.1	174.47	3.838	
10,800.0	7,045.0	10,781.3	7,160.0	89.4	90.5	99.89	-1,956.8	-1,666.2	669.6	490.2	179.44	3.732	
10,900.0	7,045.0	10,881.3	7,160.0	92.0	93.1	99.89	-1,958.2	-1,766.2	669.6	485.2	184.44	3.631	
11,000.0	7,045.0	10,981.3	7,160.0	94.6	95.6	99.89	-1,959.5	-1,866.2	669.6	480.1	189.47	3.534	
11,100.0	7,045.0	11,081.3	7,160.0	97.2	98.2	99.89	-1,960.9	-1,966.2	669.6	475.1	194.53	3.442	
11,200.0	7,045.0	11,181.3	7,160.0	99.8	100.8	99.89	-1,962.2	-2,066.2	669.6	470.0	199.61	3.355	
11,300.0	7,045.0	11,281.3	7,160.0	102.4	103.4	99.89	-1,963.6	-2,166.1	669.6	464.9	204.71	3.271	
11,400.0	7,045.0	11,381.3	7,160.0	105.0	106.0	99.89	-1,965.0	-2,266.1	669.6	459.8	209.84	3.191	
11,500.0	7,045.0	11,481.3	7,160.0	107.6	108.6	99.89	-1,966.3	-2,366.1	669.6	454.6	214.98	3.115	
11,600.0	7,045.0	11,581.3	7,160.0	110.3	111.2	99.89	-1,967.7	-2,466.1	669.6	449.5	220.15	3.042	
11,700.0	7,045.0	11,681.3	7,160.0	112.9	113.9	99.89	-1,969.0	-2,566.1	669.6	444.3	225.33	2.972	
11,800.0	7,045.0	11,781.3	7,160.0	115.6	116.5	99.89	-1,970.4	-2,666.1	669.6	439.1	230.53	2.905	
11,900.0	7,045.0	11,881.3	7,160.0	118.2	119.2	99.89	-1,971.8	-2,766.1	669.6	433.9	235.74	2.840	
12,000.0	7,045.0	11,981.3	7,160.0	120.9	121.8	99.89	-1,973.1	-2,866.1	669.6	428.7	240.97	2.779	
12,100.0	7,045.0	12,081.3	7,160.0	123.6	124.5	99.89	-1,974.5	-2,966.1	669.6	423.4	246.21	2.720	
12,200.0	7,045.0	12,181.3	7,160.0	126.3	127.2	99.89	-1,975.9	-3,066.1	669.6	418.2	251.46	2.663	
12,215.7	7,045.0	12,197.0	7,160.0	126.7	127.6	99.89	-1,976.1	-3,081.7	669.6	417.3	252.28	2.654	
12,235.3	7,045.0	12,209.7	7,160.0	127.2	127.9	99.89	-1,976.2	-3,094.5	669.7	416.5	253.13	2.645 SF	

<b>Company:</b>	Synergy Resources	<b>Local Co-ordinate Reference:</b>	Well SRC Weis K-9NHZ
<b>Project:</b>	SEC.4-T4N-R68W	<b>TVD Reference:</b>	WELL @ 5077.0ft (RKB - 13')
<b>Reference Site:</b>	SRC Kiehn Pad Sec.4-T4N-R68W	<b>MD Reference:</b>	WELL @ 5077.0ft (RKB - 13')
<b>Site Error:</b>	0.0ft	<b>North Reference:</b>	True
<b>Reference Well:</b>	SRC Weis K-9NHZ	<b>Survey Calculation Method:</b>	Minimum Curvature
<b>Well Error:</b>	0.0ft	<b>Output errors are at</b>	2.00 sigma
<b>Reference Wellbore</b>	Wellbore #1	<b>Database:</b>	Landmark
<b>Reference Design:</b>	Plan #1 (10-2-14)	<b>Offset TVD Reference:</b>	Offset Datum

Offset Design													Offset Site Error:	0.0ft
Survey Program: 0-MWD													Offset Well Error:	0.0ft
Reference		Offset		Semi Major Axis			Distance							Warning
Measured Depth (ft)	Vertical Depth (ft)	Measured Depth (ft)	Vertical Depth (ft)	Reference (ft)	Offset (ft)	Highside Toolface (°)	Offset Wellbore Centre +N/-S (ft)	+E/-W (ft)	Between Centres (ft)	Between Ellipses (ft)	Minimum Separation (ft)	Separation Factor		
0.0	0.0	0.0	0.0	0.0	0.0	-90.93	-1.5	-90.0	90.1					
100.0	100.0	100.0	100.0	0.1	0.1	-90.93	-1.5	-90.0	90.1	89.8	0.22	400.683		
200.0	200.0	200.0	200.0	0.3	0.3	-90.93	-1.5	-90.0	90.1	89.4	0.67	133.561 CC, ES		
300.0	300.0	299.9	299.9	0.5	0.5	125.50	-3.2	-90.0	91.1	90.0	1.08	84.269		
400.0	399.8	399.9	399.7	0.8	0.7	125.25	-7.8	-90.0	94.2	92.7	1.50	62.817		
500.0	499.5	499.7	499.5	1.0	1.0	127.26	-11.3	-90.0	99.4	97.5	1.96	50.598		
600.0	598.7	599.0	598.8	1.3	1.2	131.39	-13.0	-90.0	107.1	104.6	2.45	43.686		
700.0	697.5	697.7	697.5	1.6	1.4	136.79	-13.2	-90.0	118.0	115.1	2.94	40.210		
800.0	795.6	795.8	795.6	2.0	1.6	142.23	-13.2	-90.0	132.7	129.2	3.44	38.569		
900.0	893.1	893.3	893.1	2.5	1.8	147.21	-13.2	-90.0	151.2	147.3	3.95	38.327		
1,000.0	989.6	989.8	989.6	3.0	2.0	151.58	-13.2	-90.0	173.7	169.3	4.45	39.060		
1,100.0	1,085.3	1,085.5	1,085.3	3.6	2.2	155.31	-13.2	-90.0	200.1	195.2	4.94	40.472		
1,200.0	1,179.8	1,180.0	1,179.8	4.2	2.5	158.44	-13.2	-90.0	230.3	224.9	5.44	42.357		
1,300.0	1,273.2	1,280.8	1,280.6	4.9	2.7	161.24	-13.9	-89.2	263.2	257.2	5.92	44.467		
1,400.0	1,365.2	1,384.6	1,384.3	5.7	2.9	163.66	-16.9	-85.4	296.3	289.9	6.38	46.440		
1,500.0	1,455.8	1,489.8	1,489.1	6.6	3.1	165.76	-22.4	-78.6	329.6	322.8	6.85	48.154		
1,600.0	1,545.0	1,596.4	1,595.0	7.5	3.4	167.68	-30.3	-68.7	362.9	355.6	7.33	49.504		
1,700.0	1,633.7	1,705.4	1,702.6	8.4	3.7	169.46	-41.0	-55.4	393.8	386.0	7.87	50.062		
1,800.0	1,722.4	1,816.9	1,811.9	9.4	4.0	171.04	-54.6	-38.4	421.3	412.9	8.43	50.010		
1,900.0	1,811.0	1,930.6	1,922.6	10.3	4.4	172.50	-71.1	-17.8	445.3	436.3	9.01	49.436		
2,000.0	1,899.7	2,046.4	2,033.9	11.3	4.9	173.89	-90.8	6.8	465.6	456.0	9.62	48.406		
2,100.0	1,988.4	2,163.8	2,145.5	12.3	5.5	175.25	-113.6	35.2	482.1	471.9	10.25	47.054		
2,200.0	2,077.1	2,282.4	2,256.7	13.2	6.3	176.62	-139.5	67.6	494.8	483.9	10.93	45.274		
2,300.0	2,165.8	2,402.0	2,366.8	14.2	7.1	178.03	-168.5	103.8	503.7	492.0	11.65	43.227		
2,400.0	2,254.5	2,522.0	2,475.4	15.2	8.1	179.51	-200.5	143.8	508.7	496.2	12.44	40.906		
2,500.0	2,343.2	2,630.5	2,571.8	16.1	9.0	-179.07	-231.5	182.5	510.5	497.3	13.24	38.556		
2,600.0	2,431.9	2,729.8	2,659.9	17.1	9.9	-177.78	-260.2	218.3	512.2	498.1	14.06	36.430		
2,700.0	2,520.5	2,829.1	2,748.0	18.1	10.8	-176.49	-288.9	254.1	514.2	499.2	14.93	34.442		
2,800.0	2,609.2	2,928.4	2,836.1	19.0	11.8	-175.22	-317.5	289.9	516.4	500.6	15.85	32.583		
2,900.0	2,697.9	3,027.7	2,924.2	20.0	12.7	-173.95	-346.2	325.6	518.9	502.1	16.82	30.845		
3,000.0	2,786.6	3,127.0	3,012.3	21.0	13.6	-172.70	-374.8	361.4	521.6	503.8	17.85	29.220		
3,100.0	2,875.3	3,226.3	3,100.4	22.0	14.6	-171.46	-403.5	397.2	524.6	505.7	18.94	27.704		
3,200.0	2,964.0	3,325.6	3,188.5	22.9	15.6	-170.24	-432.1	433.0	527.9	507.8	20.08	26.290		
3,300.0	3,052.7	3,424.9	3,276.6	23.9	16.5	-169.03	-460.8	468.8	531.3	510.1	21.28	24.973		
3,400.0	3,141.4	3,524.2	3,364.7	24.9	17.5	-167.83	-489.5	504.6	535.1	512.5	22.53	23.748		
3,500.0	3,230.0	3,623.5	3,452.7	25.8	18.5	-166.66	-518.1	540.3	539.0	515.2	23.84	22.610		
3,600.0	3,318.7	3,722.8	3,540.8	26.8	19.4	-165.50	-546.8	576.1	543.2	518.0	25.20	21.554		
3,700.0	3,407.4	3,822.1	3,628.9	27.8	20.4	-164.36	-575.4	611.9	547.6	520.9	26.61	20.574		
3,800.0	3,496.1	3,921.5	3,717.0	28.8	21.4	-163.23	-604.1	647.7	552.2	524.1	28.08	19.665		
3,900.0	3,584.8	4,020.8	3,805.1	29.7	22.4	-162.13	-632.8	683.5	557.0	527.4	29.59	18.823		
4,000.0	3,673.5	4,120.1	3,893.2	30.7	23.4	-161.05	-661.4	719.3	562.0	530.9	31.15	18.043		
4,100.0	3,762.2	4,219.4	3,981.3	31.7	24.3	-159.98	-690.1	755.0	567.2	534.5	32.75	17.320		
4,200.0	3,850.9	4,318.7	4,069.4	32.7	25.3	-158.94	-718.7	790.8	572.6	538.3	34.39	16.650		
4,300.0	3,939.5	4,418.0	4,157.5	33.6	26.3	-157.91	-747.4	826.6	578.3	542.2	36.07	16.029		
4,400.0	4,028.2	4,517.3	4,245.6	34.6	27.3	-156.90	-776.0	862.4	584.0	546.2	37.79	15.454		
4,500.0	4,116.9	4,616.6	4,333.6	35.6	28.3	-155.92	-804.7	898.2	590.0	550.5	39.55	14.919		
4,600.0	4,205.6	4,715.9	4,421.7	36.6	29.3	-154.95	-833.4	934.0	596.1	554.8	41.33	14.423		
4,700.0	4,294.3	4,815.2	4,509.8	37.5	30.3	-154.00	-862.0	969.7	602.5	559.3	43.15	13.962		
4,800.0	4,383.0	4,914.5	4,597.9	38.5	31.2	-153.08	-890.7	1,005.5	608.9	563.9	44.99	13.534		
4,900.0	4,471.7	5,013.8	4,686.0	39.5	32.2	-152.17	-919.3	1,041.3	615.5	568.7	46.86	13.135		
5,000.0	4,560.4	5,113.1	4,774.1	40.5	33.2	-151.28	-948.0	1,077.1	622.3	573.6	48.76	12.763		
5,100.0	4,649.0	5,212.4	4,862.2	41.4	34.2	-150.41	-976.7	1,112.9	629.2	578.6	50.68	12.417		

CC - Min centre to center distance or convergent point, SF - min separation factor, ES - min ellipse separation

<b>Company:</b>	Synergy Resources	<b>Local Co-ordinate Reference:</b>	Well SRC Weis K-9NHZ
<b>Project:</b>	SEC.4-T4N-R68W	<b>TVD Reference:</b>	WELL @ 5077.0ft (RKB - 13')
<b>Reference Site:</b>	SRC Kiehn Pad Sec.4-T4N-R68W	<b>MD Reference:</b>	WELL @ 5077.0ft (RKB - 13')
<b>Site Error:</b>	0.0ft	<b>North Reference:</b>	True
<b>Reference Well:</b>	SRC Weis K-9NHZ	<b>Survey Calculation Method:</b>	Minimum Curvature
<b>Well Error:</b>	0.0ft	<b>Output errors are at</b>	2.00 sigma
<b>Reference Wellbore</b>	Wellbore #1	<b>Database:</b>	Landmark
<b>Reference Design:</b>	Plan #1 (10-2-14)	<b>Offset TVD Reference:</b>	Offset Datum

Offset Design												Offset Site Error:	0.0 ft
Survey Program: 0-MWDD												Offset Well Error:	0.0 ft
Reference		Offset		Semi Major Axis			Distance						Warning
Measured Depth (ft)	Vertical Depth (ft)	Measured Depth (ft)	Vertical Depth (ft)	Reference (ft)	Offset (ft)	Highside Toolface (°)	Offset Wellbore Centre +N/-S (ft)	+E/-W (ft)	Between Centres (ft)	Between Ellipses (ft)	Minimum Separation (ft)	Separation Factor	
5,200.0	4,737.7	5,311.7	4,950.3	42.4	35.2	-149.56	-1,005.3	1,148.7	636.3	583.7	52.61	12.094	
5,300.0	4,826.4	5,411.0	5,038.4	43.4	36.2	-148.73	-1,034.0	1,184.4	643.5	588.9	54.57	11.792	
5,400.0	4,915.1	5,510.3	5,126.5	44.4	37.2	-147.92	-1,062.6	1,220.2	650.9	594.3	56.55	11.510	
5,500.0	5,003.8	5,609.6	5,214.5	45.4	38.2	-147.12	-1,091.3	1,256.0	658.3	599.8	58.54	11.246	
5,600.0	5,092.5	5,708.9	5,302.6	46.3	39.2	-146.34	-1,120.0	1,291.8	665.9	605.4	60.54	10.999	
5,700.0	5,181.2	5,808.3	5,390.7	47.3	40.2	-145.58	-1,148.6	1,327.6	673.6	611.1	62.56	10.767	
5,800.0	5,269.9	5,907.6	5,478.8	48.3	41.2	-144.84	-1,177.3	1,363.3	681.4	616.8	64.60	10.549	
5,900.0	5,358.5	6,006.9	5,566.9	49.3	42.1	-144.12	-1,205.9	1,399.1	689.4	622.7	66.64	10.345	
6,000.0	5,447.2	6,106.2	5,655.0	50.2	43.1	-143.41	-1,234.6	1,434.9	697.4	628.7	68.69	10.153	
6,100.0	5,535.9	6,205.5	5,743.1	51.2	44.1	-142.71	-1,263.2	1,470.7	705.6	634.8	70.76	9.972	
6,200.0	5,624.6	6,304.8	5,831.2	52.2	45.1	-142.04	-1,291.9	1,506.5	713.8	641.0	72.83	9.802	
6,300.0	5,713.3	6,404.1	5,919.3	53.2	46.1	-141.38	-1,320.6	1,542.3	722.2	647.3	74.90	9.641	
6,400.0	5,802.0	6,503.4	6,007.4	54.1	47.1	-140.73	-1,349.2	1,578.0	730.6	653.6	76.99	9.490	
6,500.0	5,890.7	6,602.7	6,095.4	55.1	48.1	-140.10	-1,377.9	1,613.8	739.2	660.1	79.08	9.347	
6,600.0	5,979.3	6,711.1	6,192.9	56.1	49.0	-139.75	-1,409.6	1,648.9	747.4	666.5	80.83	9.246	
6,700.0	6,068.0	6,822.5	6,296.8	57.1	49.6	-140.63	-1,443.8	1,669.1	754.0	672.9	81.10	9.297	
6,800.0	6,156.7	6,928.1	6,397.0	58.0	50.0	-142.64	-1,476.9	1,672.4	759.7	679.7	79.97	9.499	
6,900.0	6,245.7	7,024.9	6,488.3	59.0	50.1	-151.64	-1,507.2	1,661.7	766.0	688.4	77.57	9.874	
7,000.0	6,336.8	7,116.2	6,572.2	59.6	50.2	-171.64	-1,535.3	1,639.9	774.3	699.8	74.49	10.394	
7,100.0	6,428.9	7,203.5	6,649.4	60.1	50.2	166.46	-1,561.3	1,608.7	784.3	712.8	71.53	10.965	
7,200.0	6,520.1	7,287.6	6,719.8	60.4	50.1	146.55	-1,585.1	1,569.4	795.7	726.7	68.95	11.540	
7,300.0	6,608.7	7,369.0	6,783.3	60.6	50.0	130.86	-1,606.7	1,523.4	807.9	740.9	66.93	12.070	
7,400.0	6,692.9	7,450.0	6,841.2	60.7	49.8	119.16	-1,626.6	1,470.3	820.3	754.8	65.51	12.521	
7,500.0	6,771.1	7,525.6	6,889.7	60.8	49.7	110.55	-1,643.4	1,414.8	832.5	767.7	64.84	12.839	
7,600.0	6,841.8	7,600.0	6,931.7	60.7	49.5	104.12	-1,658.1	1,355.3	844.0	779.2	64.87	13.011	
7,700.0	6,903.7	7,676.4	6,968.5	60.6	49.4	99.24	-1,671.2	1,289.6	854.5	788.8	65.65	13.016	
7,800.0	6,955.4	7,750.0	6,997.5	60.4	49.2	95.62	-1,681.6	1,222.8	863.4	796.2	67.21	12.847	
7,900.0	6,996.1	7,823.5	7,019.7	60.2	49.1	92.99	-1,690.0	1,153.4	870.6	801.1	69.55	12.518	
8,000.0	7,024.8	7,900.0	7,035.6	60.0	49.0	91.22	-1,696.2	1,078.8	875.8	803.3	72.56	12.070	
8,100.0	7,041.1	7,968.5	7,043.3	59.7	49.0	90.25	-1,699.7	1,010.9	878.9	802.8	76.07	11.553	
8,200.0	7,045.0	8,048.8	7,045.0	59.4	49.0	90.00	-1,701.4	930.6	879.7	800.4	79.30	11.094	
8,300.0	7,045.0	8,148.8	7,045.0	59.1	49.0	90.00	-1,702.7	830.6	879.7	799.0	80.74	10.896	
8,400.0	7,045.0	8,248.8	7,045.0	58.9	49.2	90.00	-1,704.1	730.6	879.7	797.2	82.52	10.660	
8,500.0	7,045.0	8,348.8	7,045.0	58.7	49.4	90.00	-1,705.4	630.6	879.7	795.1	84.64	10.393	
8,600.0	7,045.0	8,448.8	7,045.0	58.5	49.9	90.00	-1,706.8	530.6	879.7	792.7	87.07	10.104	
8,700.0	7,045.0	8,548.8	7,045.0	58.4	50.4	90.00	-1,708.2	430.6	879.7	789.9	89.79	9.798	
8,800.0	7,045.0	8,648.8	7,045.0	58.3	51.2	90.00	-1,709.5	330.6	879.7	787.0	92.76	9.484	
8,900.0	7,045.0	8,748.8	7,045.0	58.2	52.1	90.00	-1,710.9	230.6	879.7	783.8	95.97	9.167	
9,000.0	7,045.0	8,848.8	7,045.0	58.3	53.2	90.00	-1,712.2	130.6	879.7	780.3	99.39	8.851	
9,100.0	7,045.0	8,948.8	7,045.0	58.4	54.5	90.00	-1,713.6	30.7	879.7	776.7	103.01	8.540	
9,200.0	7,045.0	9,048.8	7,045.0	58.7	56.0	90.00	-1,715.0	-69.3	879.7	772.9	106.80	8.238	
9,300.0	7,045.0	9,148.8	7,045.0	59.1	57.6	90.00	-1,716.3	-169.3	879.7	769.0	110.74	7.944	
9,400.0	7,045.0	9,248.8	7,045.0	59.8	59.4	90.00	-1,717.7	-269.3	879.7	764.9	114.82	7.662	
9,500.0	7,045.0	9,348.8	7,045.0	60.8	61.2	90.00	-1,719.1	-369.3	879.7	760.7	119.02	7.391	
9,600.0	7,045.0	9,448.8	7,045.0	62.2	63.2	90.00	-1,720.4	-469.3	879.7	756.4	123.34	7.133	
9,700.0	7,045.0	9,548.8	7,045.0	63.8	65.3	90.00	-1,721.8	-569.3	879.7	752.0	127.76	6.886	
9,800.0	7,045.0	9,648.8	7,045.0	65.7	67.5	90.00	-1,723.1	-669.3	879.7	747.5	132.27	6.651	
9,900.0	7,045.0	9,748.8	7,045.0	67.7	69.7	90.00	-1,724.5	-769.3	879.7	742.9	136.85	6.428	
10,000.0	7,045.0	9,848.8	7,045.0	69.9	71.9	90.00	-1,725.9	-869.3	879.7	738.2	141.52	6.216	
10,100.0	7,045.0	9,948.8	7,045.0	72.2	74.2	90.00	-1,727.2	-969.3	879.7	733.5	146.25	6.015	
10,200.0	7,045.0	10,048.8	7,045.0	74.5	76.6	90.00	-1,728.6	-1,069.2	879.7	728.7	151.04	5.825	
10,300.0	7,045.0	10,148.8	7,045.0	76.9	79.0	90.00	-1,729.9	-1,169.2	879.7	723.9	155.88	5.644	

CC - Min centre to center distance or convergent point, SF - min separation factor, ES - min ellipse separation

Offset Design													Offset Site Error:	
Survey Program: 0-MWD													Offset Well Error:	
Reference		Offset		Semi Major Axis			Distance							
Measured Depth (ft)	Vertical Depth (ft)	Measured Depth (ft)	Vertical Depth (ft)	Reference (ft)	Offset (ft)	Highside Toolface (°)	Offset Wellbore Centre +N/-S (ft)	+E/-W (ft)	Between Centres (ft)	Between Ellipses (ft)	Minimum Separation (ft)	Separation Factor	Warning	
10,400.0	7,045.0	10,248.8	7,045.0	79.4	81.4	90.00	-1,731.3	-1,269.2	879.7	719.0	160.77	5.472		
10,500.0	7,045.0	10,348.8	7,045.0	81.9	83.9	90.00	-1,732.7	-1,369.2	879.7	714.0	165.71	5.309		
10,600.0	7,045.0	10,448.8	7,045.0	84.4	86.4	90.00	-1,734.0	-1,469.2	879.7	709.0	170.69	5.154		
10,700.0	7,045.0	10,548.8	7,045.0	86.9	88.9	90.00	-1,735.4	-1,569.2	879.7	704.0	175.71	5.007		
10,800.0	7,045.0	10,648.8	7,045.0	89.4	91.4	90.00	-1,736.8	-1,669.2	879.7	699.0	180.76	4.867		
10,900.0	7,045.0	10,748.8	7,045.0	92.0	93.9	90.00	-1,738.1	-1,769.2	879.7	693.9	185.85	4.734		
11,000.0	7,045.0	10,848.8	7,045.0	94.6	96.5	90.00	-1,739.5	-1,869.2	879.7	688.8	190.96	4.607		
11,100.0	7,045.0	10,948.8	7,045.0	97.2	99.0	90.00	-1,740.8	-1,969.2	879.7	683.6	196.10	4.486		
11,200.0	7,045.0	11,048.8	7,045.0	99.8	101.6	90.00	-1,742.2	-2,069.2	879.7	678.5	201.27	4.371		
11,300.0	7,045.0	11,148.8	7,045.0	102.4	104.2	90.00	-1,743.6	-2,169.1	879.7	673.3	206.46	4.261		
11,400.0	7,045.0	11,248.8	7,045.0	105.0	106.8	90.00	-1,744.9	-2,269.1	879.7	668.1	211.67	4.156		
11,500.0	7,045.0	11,348.8	7,045.0	107.6	109.5	90.00	-1,746.3	-2,369.1	879.7	662.8	216.90	4.056		
11,600.0	7,045.0	11,448.8	7,045.0	110.3	112.1	90.00	-1,747.6	-2,469.1	879.7	657.6	222.15	3.960		
11,700.0	7,045.0	11,548.8	7,045.0	112.9	114.7	90.00	-1,749.0	-2,569.1	879.7	652.3	227.41	3.868		
11,800.0	7,045.0	11,648.8	7,045.0	115.6	117.4	90.00	-1,750.4	-2,669.1	879.7	647.0	232.70	3.781		
11,900.0	7,045.0	11,748.8	7,045.0	118.2	120.0	90.00	-1,751.7	-2,769.1	879.7	641.7	237.99	3.696		
12,000.0	7,045.0	11,848.8	7,045.0	120.9	122.7	90.00	-1,753.1	-2,869.1	879.7	636.4	243.30	3.616		
12,100.0	7,045.0	11,948.8	7,045.0	123.6	125.3	90.00	-1,754.4	-2,969.1	879.7	631.1	248.63	3.538		
12,200.0	7,045.0	12,048.8	7,045.0	126.3	128.0	90.00	-1,755.8	-3,069.1	879.7	625.8	253.96	3.464		
12,216.8	7,045.0	12,065.6	7,045.0	126.7	128.4	90.00	-1,756.0	-3,085.8	879.7	624.9	254.86	3.452		
12,235.3	7,045.0	12,075.6	7,045.0	127.2	128.7	90.00	-1,756.2	-3,095.8	879.8	624.2	255.62	3.442 SF		

Reference Depths are relative to WELL @ 5077.0ft (RKB - 13')  
Offset Depths are relative to Offset Datum  
Central Meridian is -105.500000 °

Coordinates are relative to: SRC Weis K-9NHZ  
Coordinate System is US State Plane 1983, Colorado Northern Zone  
Grid Convergence at Surface is: 0.32°



Reference Depths are relative to WELL @ 5077.0ft (RKB - 13')  
Offset Depths are relative to Offset Datum  
Central Meridian is -105.500000 °

Coordinates are relative to: SRC Weis K-9NHZ  
Coordinate System is US State Plane 1983, Colorado Northern Zone  
Grid Convergence at Surface is: 0.32°

