

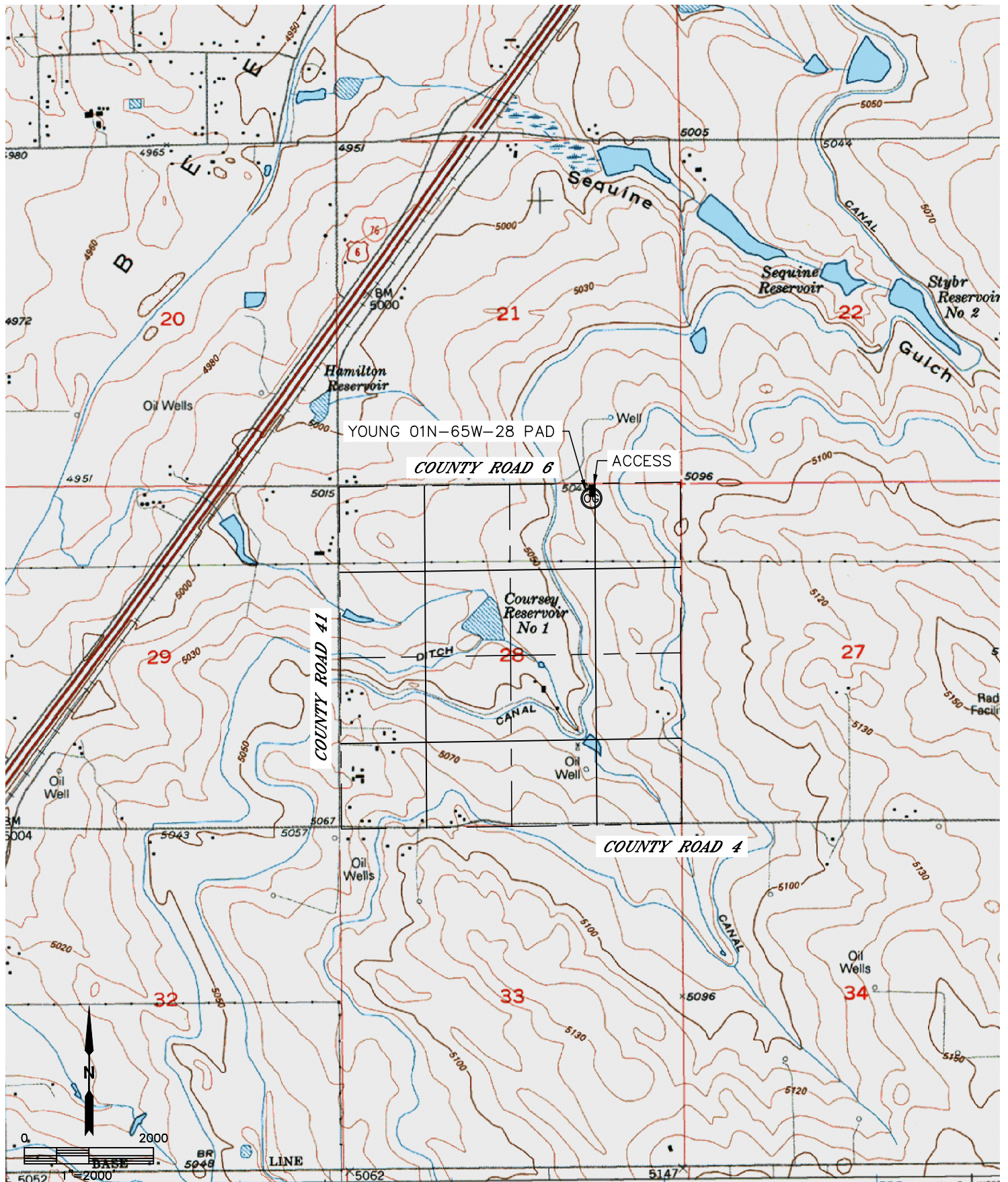


Lat40°, Inc. 1635 Foxtrail Drive, Suite 325 Loveland, CO 970-776-3321

# ACCESS ROAD MAP

YOUNG 01N-65W-28 PAD

SECTION: 28  
TOWNSHIP: 1N  
RANGE: 65W





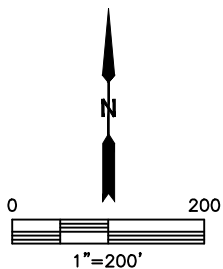
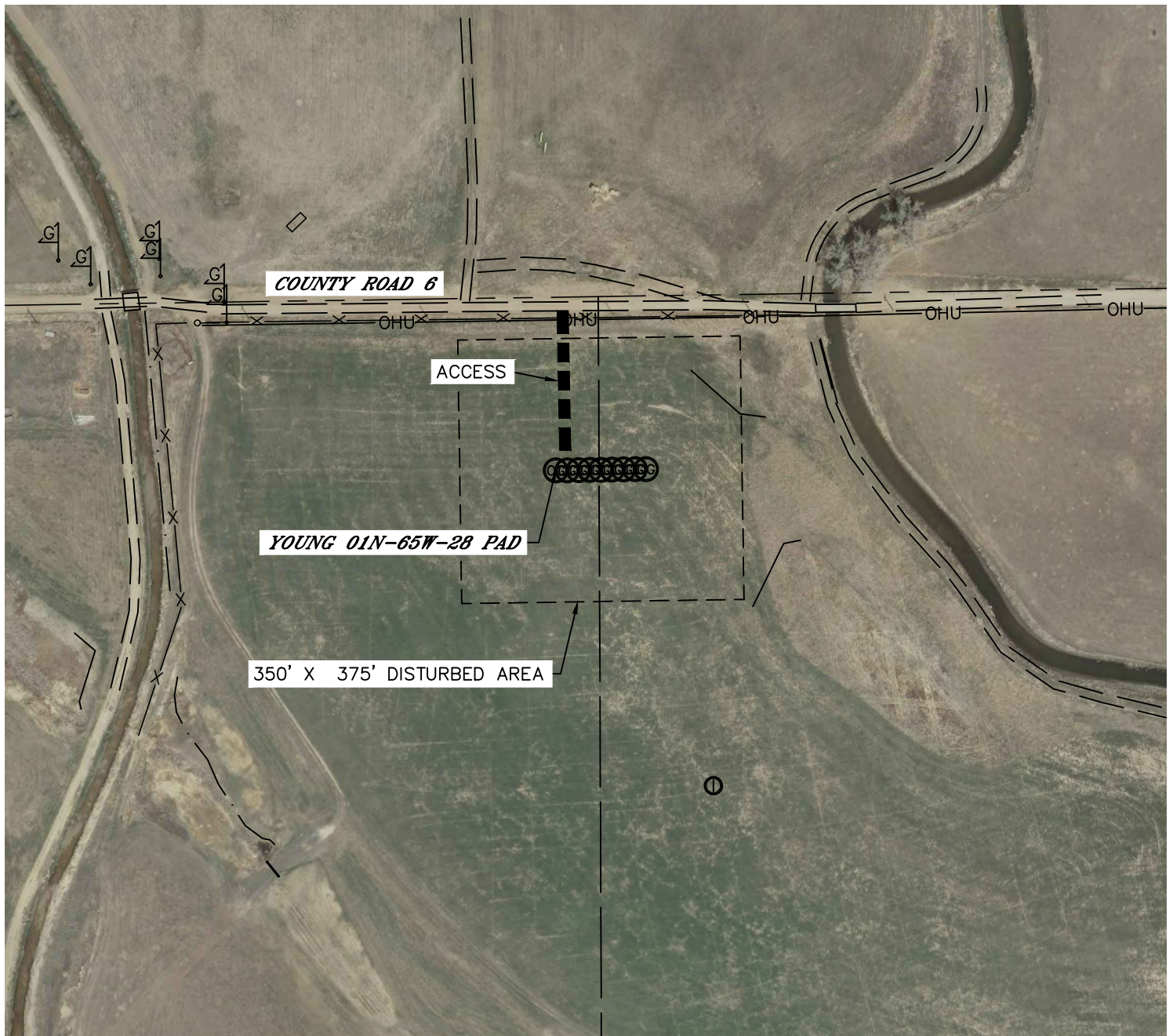


Lat40°, Inc. 1635 Foxtrail Drive, Suite 325 Loveland, CO 970-776-3321

# ACCESS ROAD MAP

YOUNG 01N-65W-28 PAD

SECTION: 28  
TOWNSHIP: 1N  
RANGE: 65W



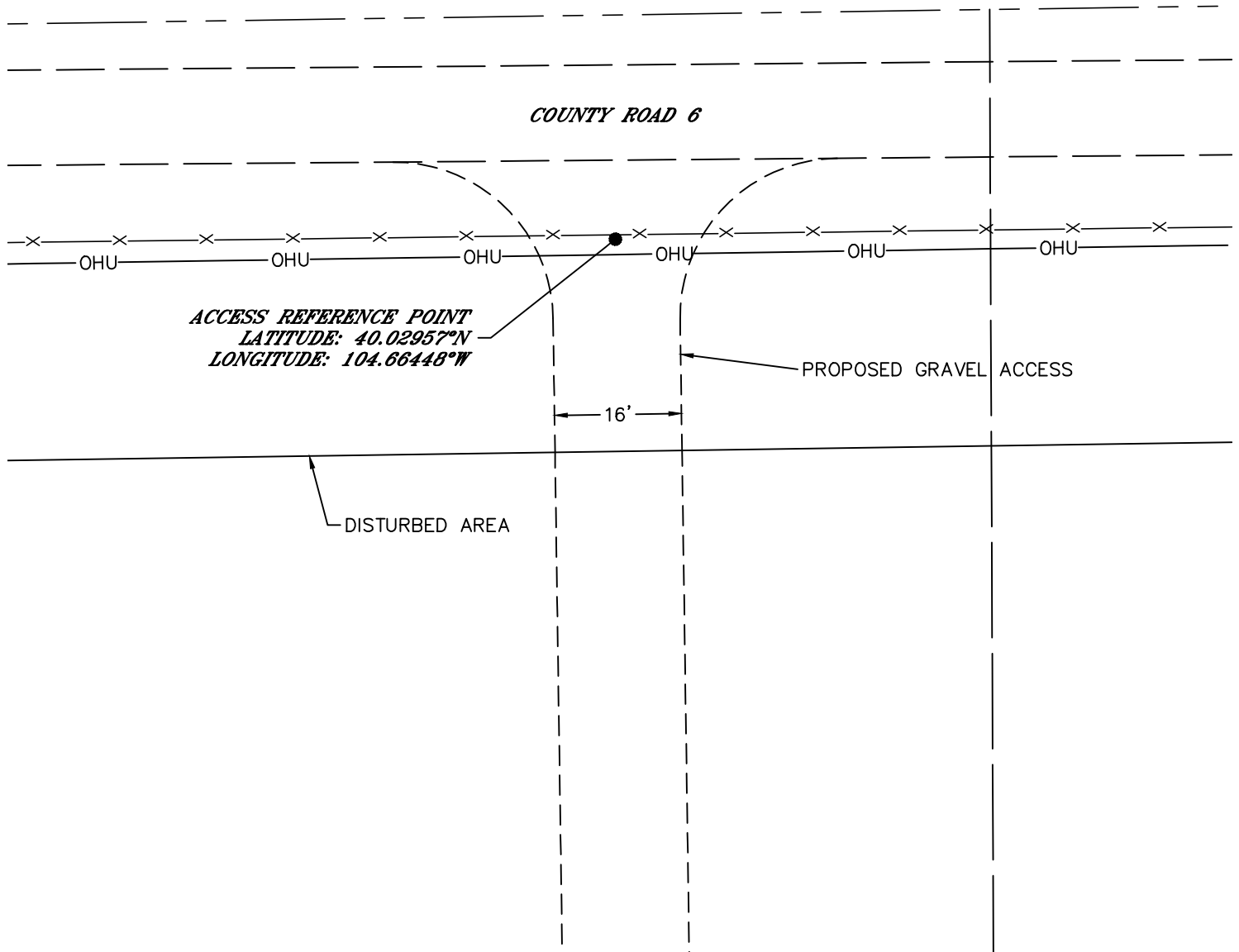


Lat40°, Inc. 1635 Foxtrail Drive, Suite 325 Loveland, CO 970-776-3321

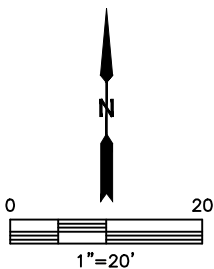
# ACCESS ROAD MAP

YOUNG 01N-65W-28 PAD

SECTION: 28  
TOWNSHIP: 1N  
RANGE: 65W



PROPOSED PERMANENT ACCESS WILL BE A CLAY BASE WITH A 1.5" GRAVEL TOP 16' WIDE BUILT TO  
BLM GOLD BOOK STANDARDS. THE MAXIMUM GRADE WILL NOT EXCEED 6%.  
NO CULVERTS EXISTING OR PROPOSED.





Lat40°, Inc. 1635 Foxtrail Drive, Suite 325 Loveland, CO 970-776-3321

# ACCESS PICTURES

YOUNG 01N-65W-28 PAD

SECTION: 28  
TOWNSHIP: 1N  
RANGE: 65W

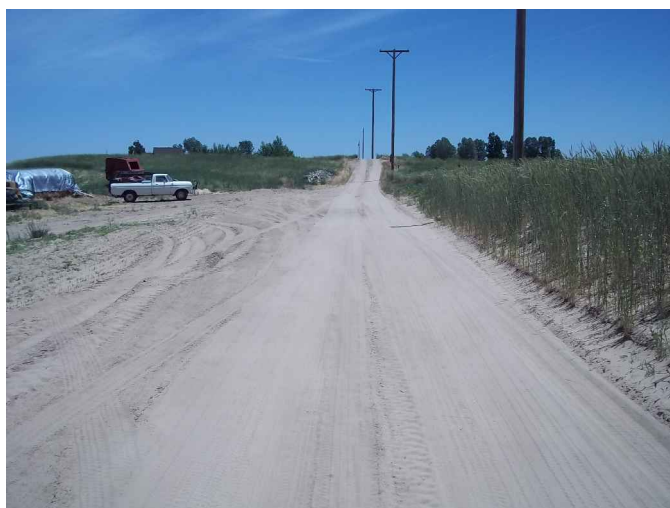
DATE: 6/17/2014



VIEW WEST (CR 6)



VIEW SOUTH



VIEW EAST (CR 6)