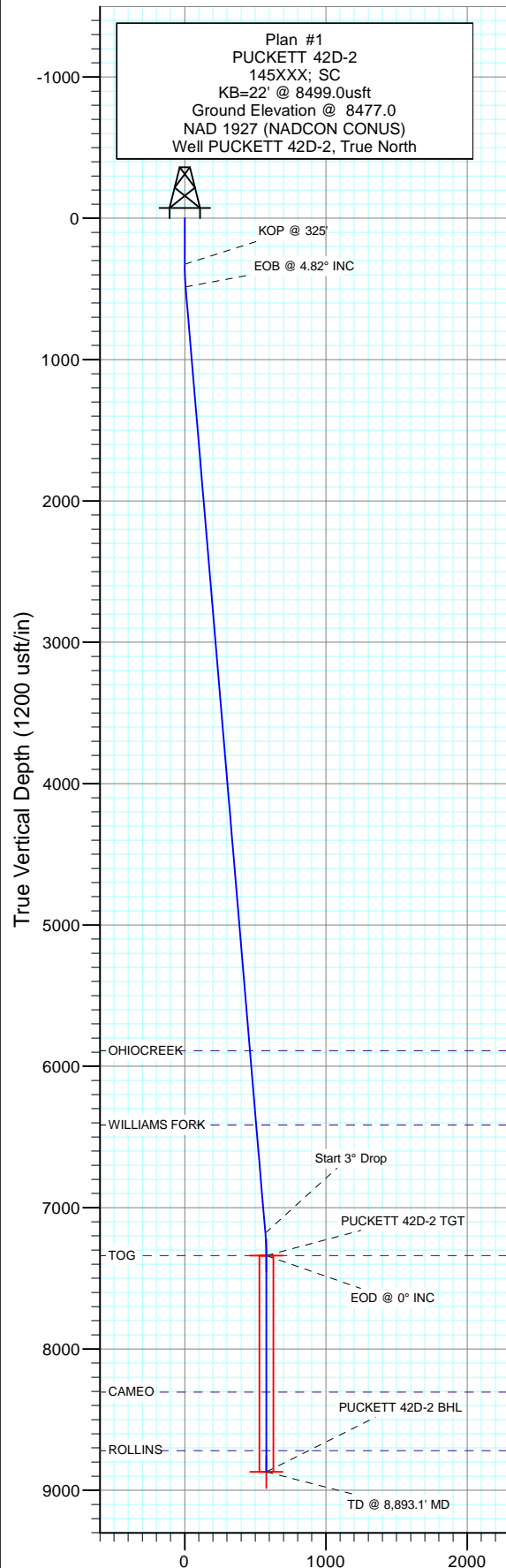


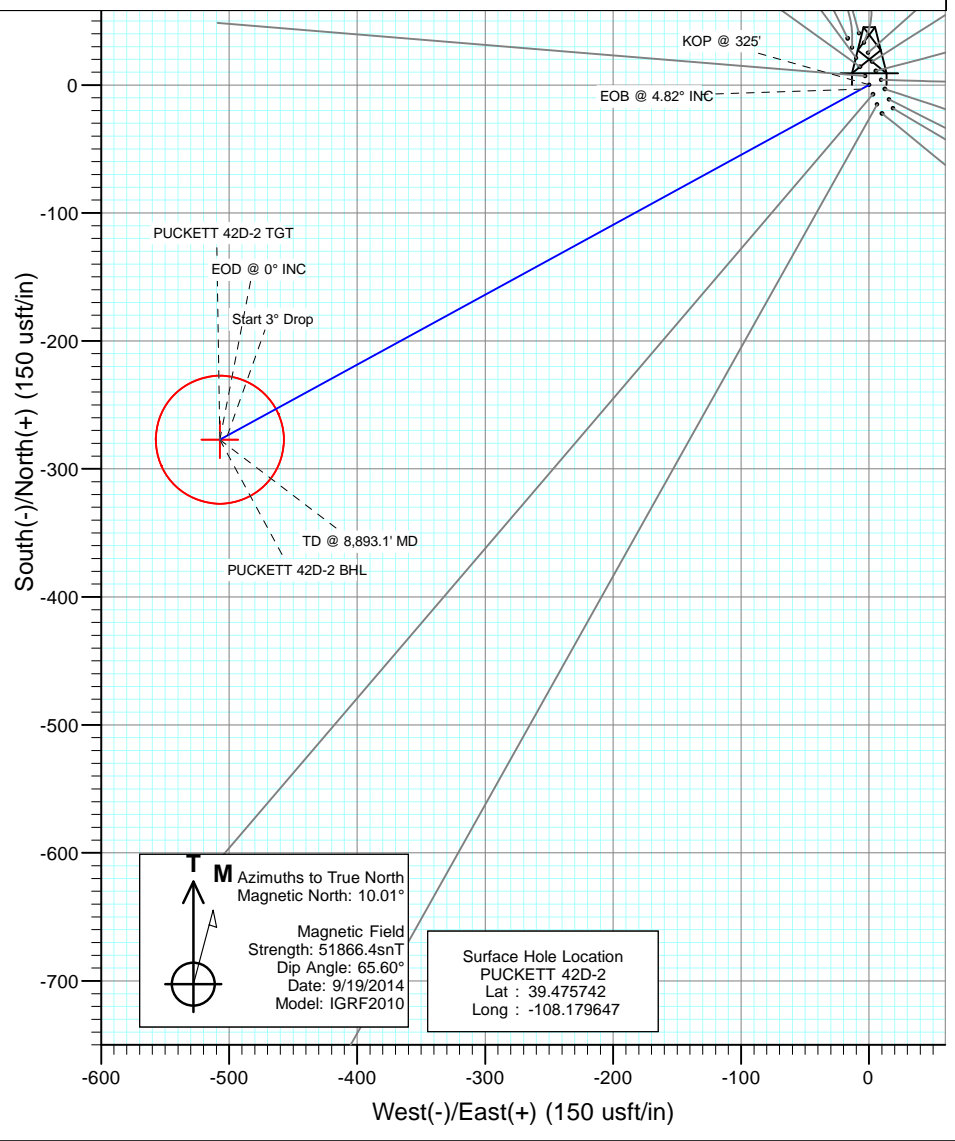


Project: Garfield County, CO
 Site: S2-T7S-R97W (Puckett Pad)
 Well: PUCKETT 42D-2
 Wellbore: DD
 Design: Plan #1



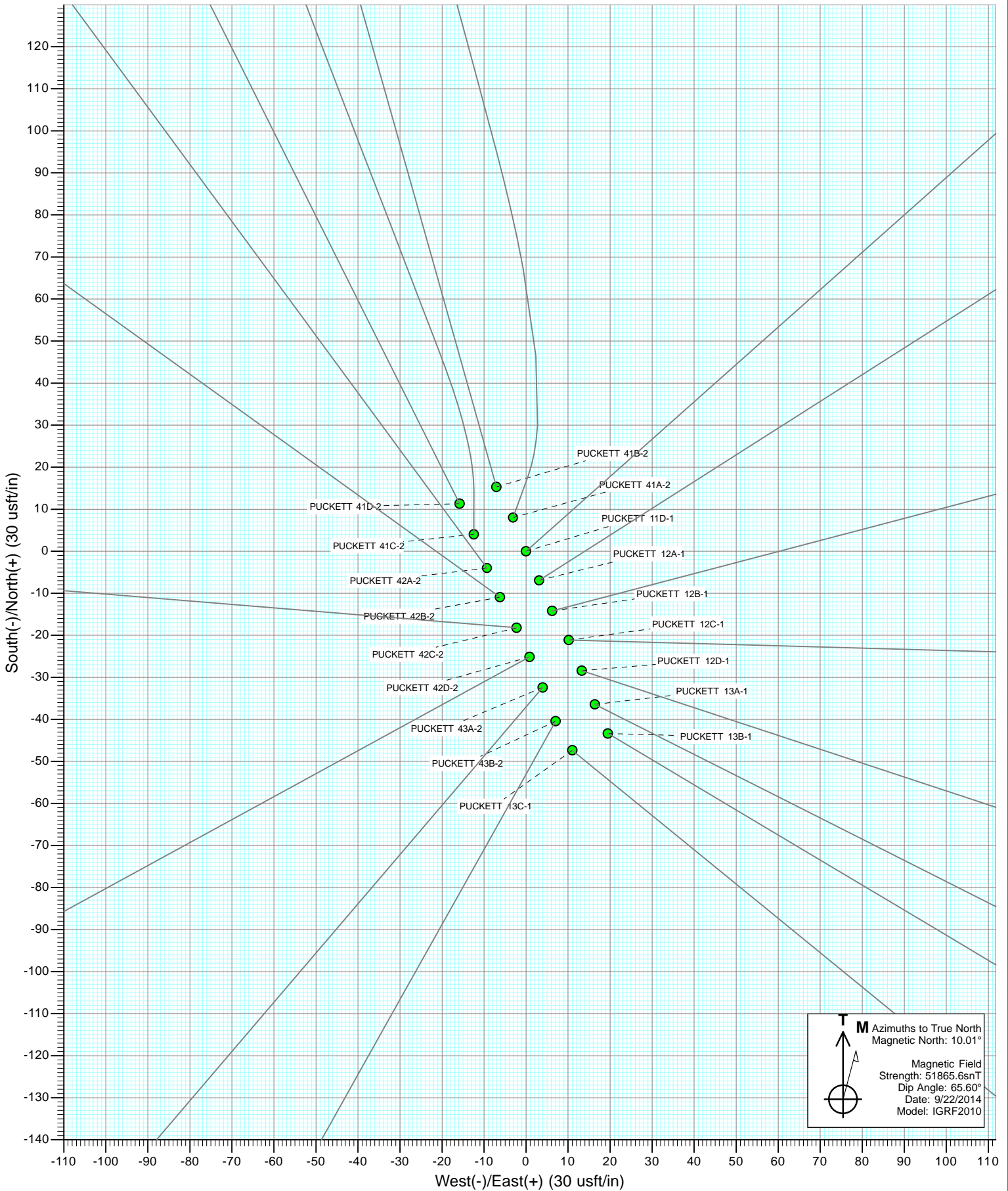
Plan #1
 PUCKETT 42D-2
 145XXX; SC
 KB=22' @ 8499.0usft
 Ground Elevation @ 8477.0
 NAD 1927 (NADCON CONUS)
 Well PUCKETT 42D-2, True North

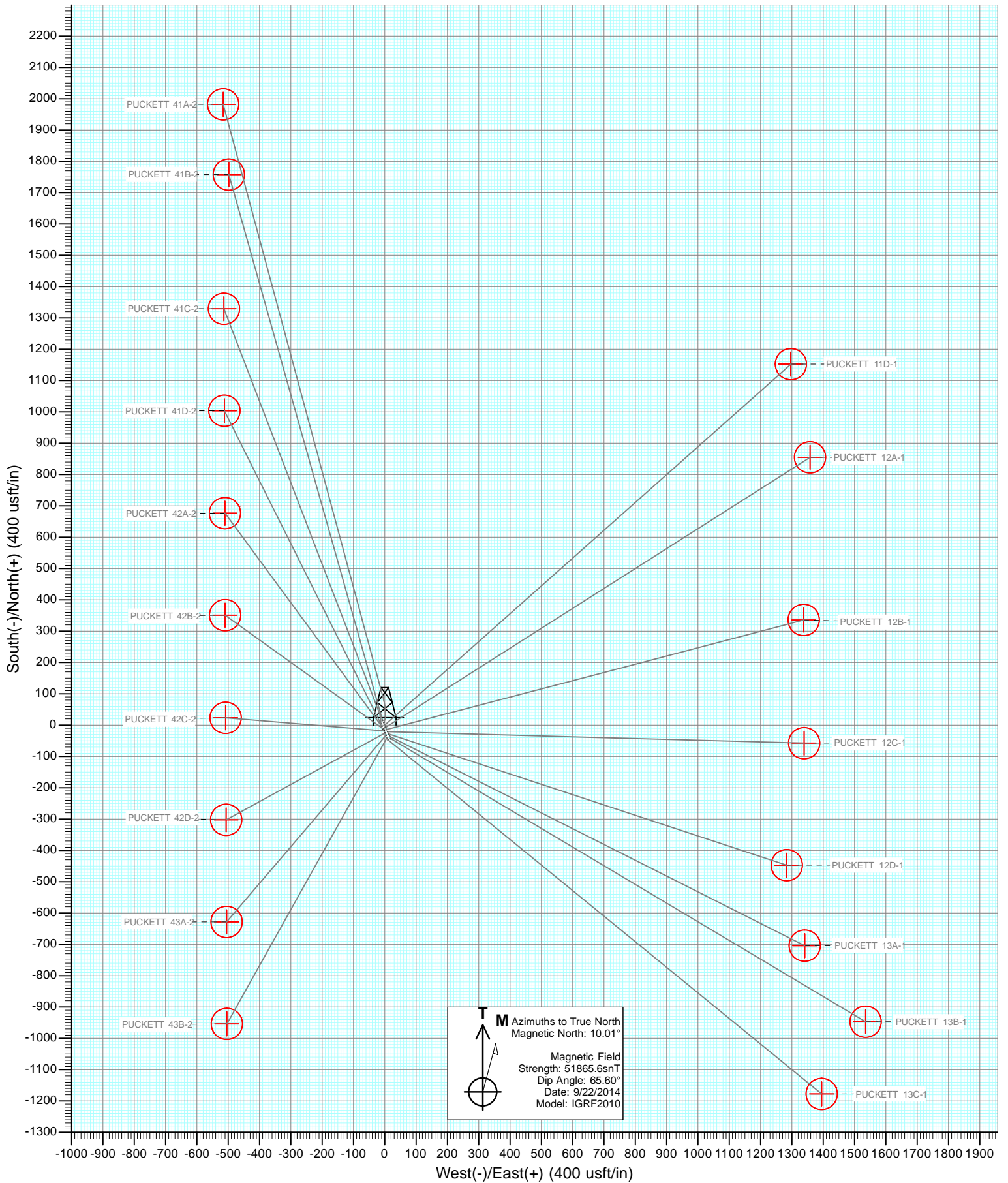
SECTION DETAILS										
Sec	MD	Inc	Azi	TVD	+N/-S	+E/-W	Dleg	TFace	VSect	Target
1	0.0	0.00	0.00	0.0	0.0	0.0	0.00	0.00	0.0	
2	325.0	0.00	0.00	325.0	0.0	0.0	0.00	0.00	0.0	
3	485.7	4.82	241.35	485.5	-3.2	-5.9	3.00	241.35	6.8	
4	7202.4	4.82	241.35	7178.5	-273.9	-501.3	0.00	0.00	571.3	PUCKETT 42D-2 TGT
5	7363.1	0.00	0.00	7339.0	-277.2	-507.3	3.00	180.00	578.1	PUCKETT 42D-2 BHL
6	8893.1	0.00	0.00	8869.0	-277.2	-507.3	0.00	0.00	578.1	PUCKETT 42D-2 BHL



DESIGN TARGET DETAILS						
Name	+N/-S	+E/-W	Northing	Easting	Latitude	Longitude
PUCKETT 42D-2 TGT	-277.2	-507.3	609049.13	1243159.54	39.474981	-108.181444
PUCKETT 42D-2 BHL	-277.2	-507.3	609049.13	1243159.54	39.474981	-108.181444

Vertical Section at 241.35° (1200 usft/in)





Cathedral Energy Services

Planning Report

Database: USA EDM 5000 Multi Users DB	Local Co-ordinate Reference: Well PUCKETT 42D-2
Company: Caerus Oil & Gas (NAD 27)	TVD Reference: KB=22' @ 8499.0usft
Project: Garfield County, CO	MD Reference: KB=22' @ 8499.0usft
Site: S2-T7S-R97W (Puckett Pad)	North Reference: True
Well: PUCKETT 42D-2	Survey Calculation Method: Minimum Curvature
Wellbore: DD	
Design: Plan #1	

Project Garfield County, CO		
Map System: US State Plane 1927 (Exact solution)	System Datum:	Mean Sea Level
Geo Datum: NAD 1927 (NADCON CONUS)		
Map Zone: Colorado Central 502		

Site S2-T7S-R97W (Puckett Pad)			
Site Position:	Northing:	609,295.75 usft	Latitude: 39.475700
From: Lat/Long	Easting:	1,243,680.53 usft	Longitude: -108.179625
Position Uncertainty: 0.0 usft	Slot Radius: 13-3/16"		Grid Convergence: -1.69 °

Well PUCKETT 42D-2				
Well Position	+N/-S	0.0 usft	Northing: 609,311.21 usft	Latitude: 39.475742
	+E/-W	0.0 usft	Easting: 1,243,674.77 usft	Longitude: -108.179647
Position Uncertainty		0.0 usft	Wellhead Elevation: 0.0 usft	Ground Level: 8,477.0 usft

Wellbore DD					
Magnetics	Model Name	Sample Date	Declination (°)	Dip Angle (°)	Field Strength (nT)
	IGRF2010	9/19/2014	10.01	65.60	51,866

Design Plan #1				
Audit Notes:				
Version:	Phase:	PLAN	Tie On Depth:	0.0
Vertical Section:	Depth From (TVD) (usft)	+N/-S (usft)	+E/-W (usft)	Direction (°)
	0.0	0.0	0.0	241.35

Plan Sections										
Measured Depth (usft)	Inclination (°)	Azimuth (°)	Vertical Depth (usft)	+N/-S (usft)	+E/-W (usft)	Dogleg Rate (°/100usft)	Build Rate (°/100usft)	Turn Rate (°/100usft)	TFO (°)	Target
0.0	0.00	0.00	0.0	0.0	0.0	0.00	0.00	0.00	0.00	
325.0	0.00	0.00	325.0	0.0	0.0	0.00	0.00	0.00	0.00	
485.7	4.82	241.35	485.5	-3.2	-5.9	3.00	3.00	0.00	241.35	
7,202.4	4.82	241.35	7,178.5	-273.9	-501.3	0.00	0.00	0.00	0.00	
7,363.1	0.00	0.00	7,339.0	-277.2	-507.3	3.00	-3.00	0.00	180.00	PUCKETT 42D-2 TG1
8,893.1	0.00	0.00	8,869.0	-277.2	-507.3	0.00	0.00	0.00	0.00	PUCKETT 42D-2 BHL

Cathedral Energy Services

Planning Report

Database: USA EDM 5000 Multi Users DB
Company: Caerus Oil & Gas (NAD 27)
Project: Garfield County, CO
Site: S2-T7S-R97W (Puckett Pad)
Well: PUCKETT 42D-2
Wellbore: DD
Design: Plan #1

Local Co-ordinate Reference: Well PUCKETT 42D-2
TVD Reference: KB=22' @ 8499.0usft
MD Reference: KB=22' @ 8499.0usft
North Reference: True
Survey Calculation Method: Minimum Curvature

Planned Survey

Measured Depth (usft)	Inclination (°)	Azimuth (°)	Vertical Depth (usft)	+N/-S (usft)	+E/-W (usft)	Vertical Section (usft)	Dogleg Rate (°/100usft)	Build Rate (°/100u)	Comments / Formations
0.0	0.00	0.00	0.0	0.0	0.0	0.0	0.00	0.00	
100.0	0.00	0.00	100.0	0.0	0.0	0.0	0.00	0.00	
200.0	0.00	0.00	200.0	0.0	0.0	0.0	0.00	0.00	
300.0	0.00	0.00	300.0	0.0	0.0	0.0	0.00	0.00	
325.0	0.00	0.00	325.0	0.0	0.0	0.0	0.00	0.00	KOP @ 325'
400.0	2.25	241.35	400.0	-0.7	-1.3	1.5	3.00	3.00	
485.7	4.82	241.35	485.5	-3.2	-5.9	6.8	3.00	3.00	EOB @ 4.82° INC
500.0	4.82	241.35	499.8	-3.8	-7.0	8.0	0.00	0.00	
600.0	4.82	241.35	599.4	-7.8	-14.4	16.4	0.00	0.00	
700.0	4.82	241.35	699.1	-11.9	-21.7	24.8	0.00	0.00	
800.0	4.82	241.35	798.7	-15.9	-29.1	33.2	0.00	0.00	
900.0	4.82	241.35	898.3	-19.9	-36.5	41.6	0.00	0.00	
1,000.0	4.82	241.35	998.0	-24.0	-43.9	50.0	0.00	0.00	
1,100.0	4.82	241.35	1,097.6	-28.0	-51.2	58.4	0.00	0.00	
1,200.0	4.82	241.35	1,197.3	-32.0	-58.6	66.8	0.00	0.00	
1,300.0	4.82	241.35	1,296.9	-36.1	-66.0	75.2	0.00	0.00	
1,400.0	4.82	241.35	1,396.6	-40.1	-73.4	83.6	0.00	0.00	
1,500.0	4.82	241.35	1,496.2	-44.1	-80.7	92.0	0.00	0.00	
1,600.0	4.82	241.35	1,595.9	-48.1	-88.1	100.4	0.00	0.00	
1,700.0	4.82	241.35	1,695.5	-52.2	-95.5	108.8	0.00	0.00	
1,800.0	4.82	241.35	1,795.2	-56.2	-102.9	117.2	0.00	0.00	
1,900.0	4.82	241.35	1,894.8	-60.2	-110.2	125.6	0.00	0.00	
2,000.0	4.82	241.35	1,994.5	-64.3	-117.6	134.0	0.00	0.00	
2,100.0	4.82	241.35	2,094.1	-68.3	-125.0	142.4	0.00	0.00	
2,200.0	4.82	241.35	2,193.7	-72.3	-132.4	150.8	0.00	0.00	
2,300.0	4.82	241.35	2,293.4	-76.4	-139.8	159.2	0.00	0.00	
2,400.0	4.82	241.35	2,393.0	-80.4	-147.1	167.7	0.00	0.00	
2,500.0	4.82	241.35	2,492.7	-84.4	-154.5	176.1	0.00	0.00	
2,600.0	4.82	241.35	2,592.3	-88.4	-161.9	184.5	0.00	0.00	
2,700.0	4.82	241.35	2,692.0	-92.5	-169.3	192.9	0.00	0.00	
2,800.0	4.82	241.35	2,791.6	-96.5	-176.6	201.3	0.00	0.00	
2,900.0	4.82	241.35	2,891.3	-100.5	-184.0	209.7	0.00	0.00	
3,000.0	4.82	241.35	2,990.9	-104.6	-191.4	218.1	0.00	0.00	
3,100.0	4.82	241.35	3,090.6	-108.6	-198.8	226.5	0.00	0.00	
3,200.0	4.82	241.35	3,190.2	-112.6	-206.1	234.9	0.00	0.00	
3,300.0	4.82	241.35	3,289.9	-116.7	-213.5	243.3	0.00	0.00	
3,400.0	4.82	241.35	3,389.5	-120.7	-220.9	251.7	0.00	0.00	
3,500.0	4.82	241.35	3,489.1	-124.7	-228.3	260.1	0.00	0.00	
3,600.0	4.82	241.35	3,588.8	-128.7	-235.6	268.5	0.00	0.00	
3,700.0	4.82	241.35	3,688.4	-132.8	-243.0	276.9	0.00	0.00	
3,800.0	4.82	241.35	3,788.1	-136.8	-250.4	285.3	0.00	0.00	
3,900.0	4.82	241.35	3,887.7	-140.8	-257.8	293.7	0.00	0.00	
4,000.0	4.82	241.35	3,987.4	-144.9	-265.1	302.1	0.00	0.00	
4,100.0	4.82	241.35	4,087.0	-148.9	-272.5	310.5	0.00	0.00	
4,200.0	4.82	241.35	4,186.7	-152.9	-279.9	318.9	0.00	0.00	
4,300.0	4.82	241.35	4,286.3	-157.0	-287.3	327.4	0.00	0.00	
4,400.0	4.82	241.35	4,386.0	-161.0	-294.6	335.8	0.00	0.00	
4,500.0	4.82	241.35	4,485.6	-165.0	-302.0	344.2	0.00	0.00	
4,600.0	4.82	241.35	4,585.3	-169.0	-309.4	352.6	0.00	0.00	
4,700.0	4.82	241.35	4,684.9	-173.1	-316.8	361.0	0.00	0.00	
4,800.0	4.82	241.35	4,784.5	-177.1	-324.1	369.4	0.00	0.00	
4,900.0	4.82	241.35	4,884.2	-181.1	-331.5	377.8	0.00	0.00	

Cathedral Energy Services

Planning Report

Database: USA EDM 5000 Multi Users DB
Company: Caerus Oil & Gas (NAD 27)
Project: Garfield County, CO
Site: S2-T7S-R97W (Puckett Pad)
Well: PUCKETT 42D-2
Wellbore: DD
Design: Plan #1

Local Co-ordinate Reference: Well PUCKETT 42D-2
TVD Reference: KB=22' @ 8499.0usft
MD Reference: KB=22' @ 8499.0usft
North Reference: True
Survey Calculation Method: Minimum Curvature

Planned Survey

Measured Depth (usft)	Inclination (°)	Azimuth (°)	Vertical Depth (usft)	+N/-S (usft)	+E/-W (usft)	Vertical Section (usft)	Dogleg Rate (°/100usft)	Build Rate (°/100u)	Comments / Formations
5,000.0	4.82	241.35	4,983.8	-185.2	-338.9	386.2	0.00	0.00	
5,100.0	4.82	241.35	5,083.5	-189.2	-346.3	394.6	0.00	0.00	
5,200.0	4.82	241.35	5,183.1	-193.2	-353.7	403.0	0.00	0.00	
5,300.0	4.82	241.35	5,282.8	-197.3	-361.0	411.4	0.00	0.00	
5,400.0	4.82	241.35	5,382.4	-201.3	-368.4	419.8	0.00	0.00	
5,500.0	4.82	241.35	5,482.1	-205.3	-375.8	428.2	0.00	0.00	
5,600.0	4.82	241.35	5,581.7	-209.3	-383.2	436.6	0.00	0.00	
5,700.0	4.82	241.35	5,681.4	-213.4	-390.5	445.0	0.00	0.00	
5,800.0	4.82	241.35	5,781.0	-217.4	-397.9	453.4	0.00	0.00	
5,900.0	4.82	241.35	5,880.7	-221.4	-405.3	461.8	0.00	0.00	
5,908.4	4.82	241.35	5,889.0	-221.8	-405.9	462.5	0.00	0.00	OHIOCREEK
6,000.0	4.82	241.35	5,980.3	-225.5	-412.7	470.2	0.00	0.00	
6,100.0	4.82	241.35	6,079.9	-229.5	-420.0	478.6	0.00	0.00	
6,200.0	4.82	241.35	6,179.6	-233.5	-427.4	487.0	0.00	0.00	
6,300.0	4.82	241.35	6,279.2	-237.6	-434.8	495.5	0.00	0.00	
6,400.0	4.82	241.35	6,378.9	-241.6	-442.2	503.9	0.00	0.00	
6,435.2	4.82	241.35	6,414.0	-243.0	-444.8	506.8	0.00	0.00	WILLIAMS FORK
6,500.0	4.82	241.35	6,478.5	-245.6	-449.5	512.3	0.00	0.00	
6,600.0	4.82	241.35	6,578.2	-249.6	-456.9	520.7	0.00	0.00	
6,700.0	4.82	241.35	6,677.8	-253.7	-464.3	529.1	0.00	0.00	
6,800.0	4.82	241.35	6,777.5	-257.7	-471.7	537.5	0.00	0.00	
6,900.0	4.82	241.35	6,877.1	-261.7	-479.0	545.9	0.00	0.00	
7,000.0	4.82	241.35	6,976.8	-265.8	-486.4	554.3	0.00	0.00	
7,100.0	4.82	241.35	7,076.4	-269.8	-493.8	562.7	0.00	0.00	
7,202.4	4.82	241.35	7,178.5	-273.9	-501.3	571.3	0.00	0.00	Start 3° Drop
7,300.0	1.89	241.35	7,275.9	-276.7	-506.4	577.0	3.00	-3.00	
7,363.1	0.00	0.00	7,339.0	-277.2	-507.3	578.1	3.00	-3.00	EOD @ 0° INC - TOG
7,400.0	0.00	0.00	7,375.9	-277.2	-507.3	578.1	0.00	0.00	
7,500.0	0.00	0.00	7,475.9	-277.2	-507.3	578.1	0.00	0.00	
7,600.0	0.00	0.00	7,575.9	-277.2	-507.3	578.1	0.00	0.00	
7,700.0	0.00	0.00	7,675.9	-277.2	-507.3	578.1	0.00	0.00	
7,800.0	0.00	0.00	7,775.9	-277.2	-507.3	578.1	0.00	0.00	
7,900.0	0.00	0.00	7,875.9	-277.2	-507.3	578.1	0.00	0.00	
8,000.0	0.00	0.00	7,975.9	-277.2	-507.3	578.1	0.00	0.00	
8,100.0	0.00	0.00	8,075.9	-277.2	-507.3	578.1	0.00	0.00	
8,200.0	0.00	0.00	8,175.9	-277.2	-507.3	578.1	0.00	0.00	
8,300.0	0.00	0.00	8,275.9	-277.2	-507.3	578.1	0.00	0.00	
8,328.1	0.00	0.00	8,304.0	-277.2	-507.3	578.1	0.00	0.00	CAMEO
8,400.0	0.00	0.00	8,375.9	-277.2	-507.3	578.1	0.00	0.00	
8,500.0	0.00	0.00	8,475.9	-277.2	-507.3	578.1	0.00	0.00	
8,600.0	0.00	0.00	8,575.9	-277.2	-507.3	578.1	0.00	0.00	
8,700.0	0.00	0.00	8,675.9	-277.2	-507.3	578.1	0.00	0.00	
8,743.1	0.00	0.00	8,719.0	-277.2	-507.3	578.1	0.00	0.00	ROLLINS
8,800.0	0.00	0.00	8,775.9	-277.2	-507.3	578.1	0.00	0.00	
8,893.1	0.00	0.00	8,869.0	-277.2	-507.3	578.1	0.00	0.00	TD @ 8,893.1' MD

Cathedral Energy Services

Planning Report

Database:	USA EDM 5000 Multi Users DB	Local Co-ordinate Reference:	Well PUCKETT 42D-2
Company:	Caerus Oil & Gas (NAD 27)	TVD Reference:	KB=22' @ 8499.0usft
Project:	Garfield County, CO	MD Reference:	KB=22' @ 8499.0usft
Site:	S2-T7S-R97W (Puckett Pad)	North Reference:	True
Well:	PUCKETT 42D-2	Survey Calculation Method:	Minimum Curvature
Wellbore:	DD		
Design:	Plan #1		

Targets									
Target Name	Dip Angle	Dip Dir.	TVD	+N/-S	+E/-W	Northing	Easting	Latitude	Longitude
- hit/miss target	(°)	(°)	(usft)	(usft)	(usft)	(usft)	(usft)		
- Shape									
PUCKETT 42D-2 TGT - plan hits target center - Point	0.00	0.00	7,339.0	-277.2	-507.3	609,049.13	1,243,159.54	39.474981	-108.181444
PUCKETT 42D-2 BHL - plan hits target center - Circle (radius 50.0)	0.00	0.00	8,869.0	-277.2	-507.3	609,049.13	1,243,159.54	39.474981	-108.181444

Formations						
Measured Depth	Vertical Depth	Name	Lithology	Dip	Dip Direction	
(usft)	(usft)			(°)	(°)	
5,908.4	5,889.0	OHIOCREEK				
6,435.2	6,414.0	WILLIAMS FORK				
7,363.1	7,339.0	TOG				
8,328.1	8,304.0	CAMEO				
8,743.1	8,719.0	ROLLINS				

Plan Annotations					
Measured Depth	Vertical Depth	Local Coordinates		Comment	
(usft)	(usft)	+N/-S	+E/-W		
		(usft)	(usft)		
325.0	325.0	0.0	0.0	KOP @ 325'	
485.7	485.5	-3.2	-5.9	EOB @ 4.82° INC	
7,202.4	7,178.5	-273.9	-501.3	Start 3° Drop	
7,363.1	7,339.0	-277.2	-507.3	EOD @ 0° INC	
8,893.1	8,869.0	-277.2	-507.3	TD @ 8,893.1' MD	

Caerus Oil & Gas (NAD 27)

Garfield County, CO

S2-T7S-R97W (Puckett Pad)

PUCKETT 42D-2

DD

Plan #1

Anticollision Report

22 September, 2014

Cathedral Energy Services

Anticollision Report

Company:	Caerus Oil & Gas (NAD 27)	Local Co-ordinate Reference:	Well PUCKETT 42D-2
Project:	Garfield County, CO	TVD Reference:	KB=22' @ 8499.0usft
Reference Site:	S2-T7S-R97W (Puckett Pad)	MD Reference:	KB=22' @ 8499.0usft
Site Error:	0.0usft	North Reference:	True
Reference Well:	PUCKETT 42D-2	Survey Calculation Method:	Minimum Curvature
Well Error:	0.0usft	Output errors are at	2.00 sigma
Reference Wellbore	DD	Database:	USA EDM 5000 Multi Users DB
Reference Design:	Plan #1	Offset TVD Reference:	Offset Datum

Reference	Plan #1		
Filter type:	NO GLOBAL FILTER: Using user defined selection & filtering criteria		
Interpolation Method:	MD Interval 100.0usft	Error Model:	ISCWSA
Depth Range:	Unlimited	Scan Method:	Closest Approach 3D
Results Limited by:	Maximum center-center distance of 200.0usft	Error Surface:	Elliptical Conic
Warning Levels Evaluated at:	2.00 Sigma		

Survey Tool Program		Date	9/22/2014		
From (usft)	To (usft)	Survey (Wellbore)	Tool Name	Description	
0.0	8,893.1	Plan #1 (DD)	ISCWSA MWD	MWD - Standard	

Cathedral Energy Services

Anticollision Report

Company:	Caerus Oil & Gas (NAD 27)	Local Co-ordinate Reference:	Well PUCKETT 42D-2
Project:	Garfield County, CO	TVD Reference:	KB=22' @ 8499.0usft
Reference Site:	S2-T7S-R97W (Puckett Pad)	MD Reference:	KB=22' @ 8499.0usft
Site Error:	0.0usft	North Reference:	True
Reference Well:	PUCKETT 42D-2	Survey Calculation Method:	Minimum Curvature
Well Error:	0.0usft	Output errors are at	2.00 sigma
Reference Wellbore	DD	Database:	USA EDM 5000 Multi Users DB
Reference Design:	Plan #1	Offset TVD Reference:	Offset Datum

Summary

Site Name	Reference Measured Depth (usft)	Offset Measured Depth (usft)	Distance Between Centres (usft)	Distance Between Ellipses (usft)	Separation Factor	Warning
S2-T7S-R97W (Puckett Pad)						
PUCKETT 11D-1 - DD - Plan #1	200.0	200.0	25.1	24.5	40.244	CC, ES
PUCKETT 11D-1 - DD - Plan #1	400.0	397.5	33.7	32.2	21.520	SF
PUCKETT 12A-1 - DD - Plan #1	234.3	234.3	18.4	17.6	23.551	CC, ES
PUCKETT 12A-1 - DD - Plan #1	400.0	398.7	23.6	22.1	15.276	SF
PUCKETT 12B-1 - DD - Plan #1	300.0	300.0	12.2	11.1	11.330	CC, ES
PUCKETT 12B-1 - DD - Plan #1	400.0	399.4	15.3	13.8	9.943	SF
PUCKETT 12C-1 - DD - Plan #1	300.0	300.0	10.1	9.1	9.439	CC, ES
PUCKETT 12C-1 - DD - Plan #1	400.0	399.7	12.2	10.7	7.895	SF
PUCKETT 12D-1 - DD - Plan #1	300.0	300.0	12.8	11.8	11.957	CC, ES
PUCKETT 12D-1 - DD - Plan #1	400.0	399.2	16.5	15.0	10.829	SF
PUCKETT 13A-1 - DD - Plan #1	233.4	233.4	19.2	18.4	24.777	CC, ES
PUCKETT 13A-1 - DD - Plan #1	400.0	398.1	25.7	24.2	16.995	SF
PUCKETT 13B-1 - DD - Plan #1	200.0	200.0	26.1	25.4	41.695	CC, ES
PUCKETT 13B-1 - DD - Plan #1	400.0	396.6	36.7	35.2	24.091	SF
PUCKETT 13C-1 - DD - Plan #1	155.6	155.6	24.4	24.0	57.473	CC
PUCKETT 13C-1 - DD - Plan #1	200.0	199.7	24.6	24.0	39.693	ES
PUCKETT 13C-1 - DD - Plan #1	400.0	396.4	36.8	35.2	24.129	SF
PUCKETT 41A-2 - DD - Plan #1	200.0	200.0	33.4	32.8	53.420	CC, ES
PUCKETT 41A-2 - DD - Plan #1	400.0	396.1	43.5	42.0	27.886	SF
PUCKETT 41B-2 - DD - Plan #1	144.4	144.4	41.2	40.8	109.821	CC, ES
PUCKETT 41B-2 - DD - Plan #1	500.0	489.0	73.0	71.0	35.231	SF
PUCKETT 41C-2 - DD - Plan #1	200.0	200.0	32.0	31.4	51.239	CC, ES
PUCKETT 41C-2 - DD - Plan #1	400.0	396.8	39.6	38.0	25.757	SF
PUCKETT 41D-2 - DD - Plan #1	155.6	155.6	40.1	39.6	94.223	CC
PUCKETT 41D-2 - DD - Plan #1	200.0	199.5	40.2	39.6	64.496	ES
PUCKETT 41D-2 - DD - Plan #1	500.0	490.5	67.8	65.7	33.104	SF
PUCKETT 42A-2 - DD - Plan #1	255.6	255.6	23.4	22.6	26.804	CC
PUCKETT 42A-2 - DD - Plan #1	300.0	299.7	23.6	22.5	21.993	ES
PUCKETT 42A-2 - DD - Plan #1	400.0	398.3	27.5	26.0	18.131	SF
PUCKETT 42B-2 - DD - Plan #1	300.0	300.0	15.9	14.8	14.763	CC, ES
PUCKETT 42B-2 - DD - Plan #1	400.0	399.4	17.2	15.7	11.416	SF
PUCKETT 42C-2 - DD - Plan #1	300.0	300.0	7.6	6.5	7.060	CC
PUCKETT 42C-2 - DD - Plan #1	334.9	334.9	7.6	6.4	6.202	ES
PUCKETT 42C-2 - DD - Plan #1	400.0	399.9	7.9	6.4	5.228	SF
PUCKETT 43A-2 - DD - Plan #1	255.8	255.8	7.9	7.0	9.042	CC
PUCKETT 43A-2 - DD - Plan #1	300.0	300.0	8.0	6.9	7.482	ES
PUCKETT 43A-2 - DD - Plan #1	400.0	399.7	9.8	8.4	6.647	SF
PUCKETT 43B-2 - DD - Plan #1	200.0	200.0	16.5	15.9	26.416	CC, ES
PUCKETT 43B-2 - DD - Plan #1	400.0	398.7	21.8	20.3	14.670	SF

CC - Min centre to center distance or convergent point, SF - min separation factor, ES - min ellipse separation

Cathedral Energy Services

Anticollision Report

Company:	Caerus Oil & Gas (NAD 27)	Local Co-ordinate Reference:	Well PUCKETT 42D-2
Project:	Garfield County, CO	TVD Reference:	KB=22' @ 8499.0usft
Reference Site:	S2-T7S-R97W (Puckett Pad)	MD Reference:	KB=22' @ 8499.0usft
Site Error:	0.0usft	North Reference:	True
Reference Well:	PUCKETT 42D-2	Survey Calculation Method:	Minimum Curvature
Well Error:	0.0usft	Output errors are at	2.00 sigma
Reference Wellbore	DD	Database:	USA EDM 5000 Multi Users DB
Reference Design:	Plan #1	Offset TVD Reference:	Offset Datum

Offset Design													Offset Site Error:	0.0 usft	
Survey Program: 0-ISCSWA MWD													Offset Well Error:		0.0 usft
Reference															
Offset				Semi Major Axis			Distance								
Measured Depth (usft)	Vertical Depth (usft)	Measured Depth (usft)	Vertical Depth (usft)	Reference (usft)	Offset (usft)	Highside Toolface (°)	Offset Wellbore Centre +N/-S (usft)	+E/-W (usft)	Between Centres (usft)	Between Ellipses (usft)	Total Uncertainty Axis	Separation Factor	Warning		
0.0	0.0	0.0	0.0	0.0	0.0	-1.93	25.1	-0.8	25.1						
100.0	100.0	100.0	100.0	0.1	0.1	-1.93	25.1	-0.8	25.1	25.0	0.18	143.432			
200.0	200.0	200.0	200.0	0.3	0.3	-1.93	25.1	-0.8	25.1	24.5	0.62	40.244	CC, ES		
300.0	300.0	299.1	299.0	0.5	0.5	2.29	26.8	1.1	26.9	25.8	1.07	25.107			
400.0	400.0	397.5	397.1	0.7	0.8	132.38	31.9	6.8	33.7	32.2	1.57	21.520	SF		
500.0	499.8	493.7	492.6	1.0	1.0	145.79	40.1	16.0	50.1	48.0	2.13	23.476			
600.0	599.4	587.4	584.8	1.2	1.4	154.10	51.1	28.4	74.3	71.7	2.63	28.302			
700.0	699.1	678.5	673.5	1.4	1.8	158.65	64.7	43.7	104.0	100.8	3.12	33.354			
800.0	798.7	772.7	764.8	1.7	2.2	161.40	80.4	61.3	136.4	132.8	3.60	37.894			
900.0	898.3	867.2	856.2	2.0	2.7	163.10	96.1	79.0	169.0	164.9	4.06	41.577			

CC - Min centre to center distance or convergent point, SF - min separation factor, ES - min ellipse separation

Cathedral Energy Services

Anticollision Report

Company:	Caerus Oil & Gas (NAD 27)	Local Co-ordinate Reference:	Well PUCKETT 42D-2
Project:	Garfield County, CO	TVD Reference:	KB=22' @ 8499.0usft
Reference Site:	S2-T7S-R97W (Puckett Pad)	MD Reference:	KB=22' @ 8499.0usft
Site Error:	0.0usft	North Reference:	True
Reference Well:	PUCKETT 42D-2	Survey Calculation Method:	Minimum Curvature
Well Error:	0.0usft	Output errors are at	2.00 sigma
Reference Wellbore	DD	Database:	USA EDM 5000 Multi Users DB
Reference Design:	Plan #1	Offset TVD Reference:	Offset Datum

Offset Design													Offset Site Error:	0.0 usft
S2-T7S-R97W (Puckett Pad) - PUCKETT 12A-1 - DD - Plan #1													Offset Well Error:	0.0 usft
Survey Program: 0-ISCSWA MWD														
Reference		Offset		Semi Major Axis			Distance							
Measured Depth (usft)	Vertical Depth (usft)	Measured Depth (usft)	Vertical Depth (usft)	Reference (usft)	Offset (usft)	Highside Toolface (°)	Offset Wellbore Centre +N/-S (usft)	+E/-W (usft)	Between Centres (usft)	Between Ellipses (usft)	Total Uncertainty Axis	Separation Factor	Warning	
0.0	0.0	0.0	0.0	0.0	0.0	7.07	18.2	2.3	18.4					
100.0	100.0	100.0	100.0	0.1	0.1	7.07	18.2	2.3	18.4	18.2	0.18	104.673		
200.0	200.0	200.0	200.0	0.3	0.3	7.07	18.2	2.3	18.4	17.7	0.62	29.369		
234.3	234.3	234.3	234.3	0.4	0.4	7.07	18.2	2.3	18.4	17.6	0.78	23.551	CC, ES	
300.0	300.0	299.7	299.7	0.5	0.5	8.59	18.6	2.8	18.8	17.7	1.07	17.527		
400.0	400.0	398.7	398.5	0.7	0.8	139.48	21.3	7.1	23.6	22.1	1.55	15.276	SF	
500.0	499.8	495.9	495.2	1.0	1.0	154.83	26.7	15.6	38.2	36.1	2.11	18.088		
600.0	599.4	590.7	588.9	1.2	1.3	163.26	34.5	27.8	60.7	58.1	2.59	23.386		
700.0	699.1	683.1	679.4	1.4	1.6	167.57	44.5	43.5	88.4	85.3	3.07	28.757		
800.0	798.7	777.3	771.0	1.7	2.1	170.05	56.2	62.0	119.4	115.9	3.55	33.633		
900.0	898.3	872.2	863.4	2.0	2.5	171.53	68.1	80.6	150.6	146.6	4.02	37.497		
1,000.0	998.0	967.2	955.7	2.2	2.9	172.50	79.9	99.3	181.9	177.4	4.49	40.540		

CC - Min centre to center distance or convergent point, SF - min separation factor, ES - min ellipse separation

Cathedral Energy Services

Anticollision Report

Company:	Caerus Oil & Gas (NAD 27)	Local Co-ordinate Reference:	Well PUCKETT 42D-2
Project:	Garfield County, CO	TVD Reference:	KB=22' @ 8499.0usft
Reference Site:	S2-T7S-R97W (Puckett Pad)	MD Reference:	KB=22' @ 8499.0usft
Site Error:	0.0usft	North Reference:	True
Reference Well:	PUCKETT 42D-2	Survey Calculation Method:	Minimum Curvature
Well Error:	0.0usft	Output errors are at	2.00 sigma
Reference Wellbore	DD	Database:	USA EDM 5000 Multi Users DB
Reference Design:	Plan #1	Offset TVD Reference:	Offset Datum

Offset Design													Offset Site Error:	0.0 usft
S2-T7S-R97W (Puckett Pad) - PUCKETT 12B-1 - DD - Plan #1													Offset Well Error:	0.0 usft
Survey Program: 0-ISCSWA MWD														
Reference		Offset		Semi Major Axis			Distance						Warning	
Measured Depth (usft)	Vertical Depth (usft)	Measured Depth (usft)	Vertical Depth (usft)	Reference (usft)	Offset (usft)	Highside Toolface (°)	Offset Wellbore Centre +N/-S (usft)	+E/-W (usft)	Between Centres (usft)	Between Ellipses (usft)	Total Uncertainty Axis	Separation Factor		
0.0	0.0	0.0	0.0	0.0	0.0	26.14	10.9	5.4	12.2					
100.0	100.0	100.0	100.0	0.1	0.1	26.14	10.9	5.4	12.2	12.0	0.18	69.430		
200.0	200.0	200.0	200.0	0.3	0.3	26.14	10.9	5.4	12.2	11.5	0.62	19.480		
300.0	300.0	300.0	300.0	0.5	0.5	26.14	10.9	5.4	12.2	11.1	1.07	11.330	CC, ES	
400.0	400.0	399.4	399.4	0.7	0.8	155.28	11.6	7.9	15.3	13.8	1.54	9.943	SF	
500.0	499.8	497.4	497.1	1.0	1.0	170.57	13.5	15.2	28.3	26.2	2.10	13.479		
600.0	599.4	593.4	592.2	1.2	1.2	178.06	16.6	27.1	48.7	46.1	2.56	19.027		
700.0	699.1	687.1	684.5	1.4	1.6	-178.08	20.9	43.2	74.2	71.1	3.04	24.427		
800.0	798.7	783.1	778.5	1.7	1.9	-175.89	25.8	61.8	102.1	98.6	3.51	29.113		
900.0	898.3	879.0	872.5	2.0	2.3	-174.63	30.7	80.5	130.1	126.1	3.97	32.787		
1,000.0	998.0	975.0	966.5	2.2	2.7	-173.83	35.6	99.2	158.1	153.7	4.44	35.629		
1,100.0	1,097.6	1,071.0	1,060.5	2.5	3.1	-173.26	40.5	117.8	186.2	181.3	4.91	37.882		

CC - Min centre to center distance or convergent point, SF - min separation factor, ES - min ellipse separation

Cathedral Energy Services

Anticollision Report

Company:	Caerus Oil & Gas (NAD 27)	Local Co-ordinate Reference:	Well PUCKETT 42D-2
Project:	Garfield County, CO	TVD Reference:	KB=22' @ 8499.0usft
Reference Site:	S2-T7S-R97W (Puckett Pad)	MD Reference:	KB=22' @ 8499.0usft
Site Error:	0.0usft	North Reference:	True
Reference Well:	PUCKETT 42D-2	Survey Calculation Method:	Minimum Curvature
Well Error:	0.0usft	Output errors are at	2.00 sigma
Reference Wellbore	DD	Database:	USA EDM 5000 Multi Users DB
Reference Design:	Plan #1	Offset TVD Reference:	Offset Datum

Offset Design S2-T7S-R97W (Puckett Pad) - PUCKETT 12C-1 - DD - Plan #1													Offset Site Error:	0.0 usft
Survey Program: 0-ISCSWA MWD													Offset Well Error:	0.0 usft
Reference		Offset		Semi Major Axis			Distance						Warning	
Measured Depth (usft)	Vertical Depth (usft)	Measured Depth (usft)	Vertical Depth (usft)	Reference (usft)	Offset (usft)	Highside Toolface (°)	Offset Wellbore Centre +N/-S (usft)	+E/-W (usft)	Between Centres (usft)	Between Ellipses (usft)	Total Uncertainty Axis	Separation Factor		
0.0	0.0	0.0	0.0	0.0	0.0	66.73	4.0	9.3	10.1					
100.0	100.0	100.0	100.0	0.1	0.1	66.73	4.0	9.3	10.1	10.0	0.18	57.841		
200.0	200.0	200.0	200.0	0.3	0.3	66.73	4.0	9.3	10.1	9.5	0.62	16.229		
300.0	300.0	300.0	300.0	0.5	0.5	66.73	4.0	9.3	10.1	9.1	1.07	9.439		
300.0	300.0	300.0	300.0	0.5	0.5	66.73	4.0	9.3	10.1	9.1	1.07	9.439 CC, ES		
400.0	400.0	399.7	399.7	0.7	0.8	-173.98	4.0	10.0	12.2	10.7	1.54	7.895 SF		
500.0	499.8	498.2	498.1	1.0	1.0	-170.43	3.8	15.1	23.4	21.3	2.07	11.307		
600.0	599.4	595.0	594.4	1.2	1.2	-167.36	3.6	25.0	41.3	38.8	2.52	16.416		
700.0	699.1	689.9	688.1	1.4	1.5	-164.90	3.2	39.5	64.0	61.0	2.99	21.416		
800.0	798.7	785.0	781.5	1.7	1.8	-163.10	2.7	57.7	90.5	87.0	3.47	26.039		
900.0	898.3	881.3	875.9	2.0	2.2	-162.06	2.2	76.6	117.4	113.4	3.94	29.754		
1,000.0	998.0	977.6	970.3	2.2	2.6	-161.41	1.6	95.4	144.3	139.9	4.42	32.615		
1,100.0	1,097.6	1,073.9	1,064.8	2.5	3.0	-160.96	1.1	114.3	171.2	166.3	4.91	34.867		
1,200.0	1,197.3	1,170.2	1,159.2	2.8	3.4	-160.64	0.6	133.1	198.2	192.8	5.40	36.678		

CC - Min centre to center distance or convergent point, SF - min separation factor, ES - min ellipse separation

Cathedral Energy Services

Anticollision Report

Company:	Caerus Oil & Gas (NAD 27)	Local Co-ordinate Reference:	Well PUCKETT 42D-2
Project:	Garfield County, CO	TVD Reference:	KB=22' @ 8499.0usft
Reference Site:	S2-T7S-R97W (Puckett Pad)	MD Reference:	KB=22' @ 8499.0usft
Site Error:	0.0usft	North Reference:	True
Reference Well:	PUCKETT 42D-2	Survey Calculation Method:	Minimum Curvature
Well Error:	0.0usft	Output errors are at	2.00 sigma
Reference Wellbore	DD	Database:	USA EDM 5000 Multi Users DB
Reference Design:	Plan #1	Offset TVD Reference:	Offset Datum

Offset Design													Offset Site Error:	0.0 usft	
Survey Program: 0-ISCSWA MWD													Offset Well Error:		0.0 usft
Reference															
Offset				Semi Major Axis			Distance								
Measured Depth (usft)	Vertical Depth (usft)	Measured Depth (usft)	Vertical Depth (usft)	Reference (usft)	Offset (usft)	Highside Toolface (°)	Offset Wellbore Centre +N/-S (usft)	+E/-W (usft)	Between Centres (usft)	Between Ellipses (usft)	Total Uncertainty Axis	Separation Factor	Warning		
0.0	0.0	0.0	0.0	0.0	0.0	104.78	-3.3	12.4	12.8						
100.0	100.0	100.0	100.0	0.1	0.1	104.78	-3.3	12.4	12.8	12.7	0.18	73.273			
200.0	200.0	200.0	200.0	0.3	0.3	104.78	-3.3	12.4	12.8	12.2	0.62	20.559			
300.0	300.0	300.0	300.0	0.5	0.5	104.78	-3.3	12.4	12.8	11.8	1.07	11.957 CC, ES			
400.0	400.0	399.2	399.1	0.7	0.7	-139.44	-4.1	14.9	16.5	15.0	1.53	10.829 SF			
500.0	499.8	497.2	496.8	1.0	1.0	-145.78	-6.5	22.1	29.3	27.3	2.05	14.323			
600.0	599.4	593.4	592.2	1.2	1.2	-147.93	-10.3	33.8	48.7	46.2	2.52	19.369			
700.0	699.1	687.9	685.3	1.4	1.5	-147.81	-15.6	49.7	72.8	69.8	3.01	24.157			
800.0	798.7	784.5	780.0	1.7	1.9	-147.46	-21.5	67.6	98.7	95.2	3.50	28.215			
900.0	898.3	881.1	874.7	2.0	2.3	-147.25	-27.4	85.6	124.6	120.6	3.99	31.241			
1,000.0	998.0	977.7	969.5	2.2	2.7	-147.12	-33.3	103.5	150.4	145.9	4.49	33.527			
1,100.0	1,097.6	1,074.3	1,064.2	2.5	3.1	-147.02	-39.2	121.5	176.3	171.3	4.99	35.305			

CC - Min centre to center distance or convergent point, SF - min separation factor, ES - min ellipse separation

Cathedral Energy Services

Anticollision Report

Company:	Caerus Oil & Gas (NAD 27)	Local Co-ordinate Reference:	Well PUCKETT 42D-2
Project:	Garfield County, CO	TVD Reference:	KB=22' @ 8499.0usft
Reference Site:	S2-T7S-R97W (Puckett Pad)	MD Reference:	KB=22' @ 8499.0usft
Site Error:	0.0usft	North Reference:	True
Reference Well:	PUCKETT 42D-2	Survey Calculation Method:	Minimum Curvature
Well Error:	0.0usft	Output errors are at	2.00 sigma
Reference Wellbore	DD	Database:	USA EDM 5000 Multi Users DB
Reference Design:	Plan #1	Offset TVD Reference:	Offset Datum

Offset Design S2-T7S-R97W (Puckett Pad) - PUCKETT 13A-1 - DD - Plan #1													Offset Site Error:	0.0 usft
Survey Program: 0-ISCSWA MWD													Offset Well Error:	0.0 usft
Reference		Offset		Semi Major Axis			Distance						Warning	
Measured Depth (usft)	Vertical Depth (usft)	Measured Depth (usft)	Vertical Depth (usft)	Reference (usft)	Offset (usft)	Highside Toolface (°)	Offset Wellbore Centre +N/-S (usft)	+E/-W (usft)	Between Centres (usft)	Between Ellipses (usft)	Total Uncertainty Axis	Separation Factor		
0.0	0.0	0.0	0.0	0.0	0.0	126.03	-11.3	15.5	19.2					
100.0	100.0	100.0	100.0	0.1	0.1	126.03	-11.3	15.5	19.2	19.0	0.18	109.501		
200.0	200.0	200.0	200.0	0.3	0.3	126.03	-11.3	15.5	19.2	18.6	0.62	30.723		
233.4	233.4	233.4	233.4	0.4	0.4	126.03	-11.3	15.5	19.2	18.4	0.77	24.777	CC, ES	
300.0	300.0	299.5	299.5	0.5	0.5	125.73	-11.6	16.1	19.8	18.8	1.06	18.636		
400.0	400.0	398.1	398.0	0.7	0.7	-120.21	-13.9	20.7	25.7	24.2	1.51	16.995	SF	
500.0	499.8	495.4	494.7	1.0	1.0	-129.06	-18.4	29.6	39.7	37.7	2.03	19.592		
600.0	599.4	590.7	588.9	1.2	1.3	-133.93	-24.9	42.6	60.4	57.9	2.52	23.943		
700.0	699.1	684.6	680.9	1.4	1.6	-135.66	-33.4	59.4	85.9	82.9	3.04	28.246		
800.0	798.7	780.9	774.9	1.7	2.1	-136.45	-42.8	78.0	112.9	109.4	3.54	31.890		
900.0	898.3	877.1	868.9	2.0	2.5	-136.94	-52.1	96.5	140.0	136.0	4.05	34.576		
1,000.0	998.0	973.4	962.9	2.2	2.9	-137.27	-61.5	115.1	167.1	162.5	4.57	36.579		
1,100.0	1,097.6	1,069.7	1,056.9	2.5	3.4	-137.50	-70.8	133.7	194.1	189.0	5.09	38.126		

CC - Min centre to center distance or convergent point, SF - min separation factor, ES - min ellipse separation

Cathedral Energy Services

Anticollision Report

Company:	Caerus Oil & Gas (NAD 27)	Local Co-ordinate Reference:	Well PUCKETT 42D-2
Project:	Garfield County, CO	TVD Reference:	KB=22' @ 8499.0usft
Reference Site:	S2-T7S-R97W (Puckett Pad)	MD Reference:	KB=22' @ 8499.0usft
Site Error:	0.0usft	North Reference:	True
Reference Well:	PUCKETT 42D-2	Survey Calculation Method:	Minimum Curvature
Well Error:	0.0usft	Output errors are at	2.00 sigma
Reference Wellbore	DD	Database:	USA EDM 5000 Multi Users DB
Reference Design:	Plan #1	Offset TVD Reference:	Offset Datum

Offset Design													Offset Site Error:	0.0 usft
S2-T7S-R97W (Puckett Pad) - PUCKETT 13B-1 - DD - Plan #1													Offset Well Error:	0.0 usft
Survey Program: 0-ISCSWA MWD														
Reference		Offset		Semi Major Axis			Distance							
Measured Depth (usft)	Vertical Depth (usft)	Measured Depth (usft)	Vertical Depth (usft)	Reference (usft)	Offset (usft)	Highside Toolface (°)	Offset Wellbore Centre +N/-S (usft)	+E/-W (usft)	Between Centres (usft)	Between Ellipses (usft)	Total Uncertainty Axis	Separation Factor	Warning	
0.0	0.0	0.0	0.0	0.0	0.0	134.35	-18.2	18.6	26.1					
100.0	100.0	100.0	100.0	0.1	0.1	134.35	-18.2	18.6	26.1	25.9	0.18	148.607		
200.0	200.0	200.0	200.0	0.3	0.3	134.35	-18.2	18.6	26.1	25.4	0.62	41.695 CC, ES		
300.0	300.0	298.6	298.6	0.5	0.5	133.15	-19.5	20.8	28.6	27.5	1.06	27.006		
400.0	400.0	396.6	396.2	0.7	0.8	-112.71	-23.4	27.3	36.7	35.2	1.52	24.091 SF		
500.0	499.8	492.9	491.8	1.0	1.0	-120.65	-29.7	37.9	52.4	50.4	2.03	25.770		
600.0	599.4	587.1	584.5	1.2	1.4	-125.92	-38.2	52.2	74.7	72.1	2.54	29.382		
700.0	699.1	679.0	674.0	1.4	1.8	-128.35	-48.8	70.0	102.0	98.9	3.07	33.258		
800.0	798.7	773.5	765.4	1.7	2.2	-129.59	-61.1	90.7	132.3	128.7	3.60	36.742		
900.0	898.3	868.8	857.5	2.0	2.7	-130.37	-73.6	111.6	162.7	158.6	4.12	39.480		
1,000.0	998.0	964.0	949.6	2.2	3.2	-130.90	-86.1	132.5	193.1	188.5	4.65	41.498		

CC - Min centre to center distance or convergent point, SF - min separation factor, ES - min ellipse separation

Cathedral Energy Services

Anticollision Report

Company:	Caerus Oil & Gas (NAD 27)	Local Co-ordinate Reference:	Well PUCKETT 42D-2
Project:	Garfield County, CO	TVD Reference:	KB=22' @ 8499.0usft
Reference Site:	S2-T7S-R97W (Puckett Pad)	MD Reference:	KB=22' @ 8499.0usft
Site Error:	0.0usft	North Reference:	True
Reference Well:	PUCKETT 42D-2	Survey Calculation Method:	Minimum Curvature
Well Error:	0.0usft	Output errors are at	2.00 sigma
Reference Wellbore	DD	Database:	USA EDM 5000 Multi Users DB
Reference Design:	Plan #1	Offset TVD Reference:	Offset Datum

Offset Design S2-T7S-R97W (Puckett Pad) - PUCKETT 13C-1 - DD - Plan #1													Offset Site Error:	0.0 usft
Survey Program: 0-ISCSWA MWD													Offset Well Error:	0.0 usft
Reference		Offset		Semi Major Axis			Distance						Warning	
Measured Depth (usft)	Vertical Depth (usft)	Measured Depth (usft)	Vertical Depth (usft)	Reference (usft)	Offset (usft)	Highside Toolface (°)	Offset Wellbore Centre +N/-S (usft)	+E/-W (usft)	Between Centres (usft)	Between Ellipses (usft)	Total Uncertainty Axis	Separation Factor		
0.0	0.0	0.0	0.0	0.0	0.0	155.42	-22.2	10.2	24.4					
100.0	100.0	100.0	100.0	0.1	0.1	155.42	-22.2	10.2	24.4	24.3	0.18	139.358		
155.6	155.6	155.6	155.6	0.2	0.2	155.42	-22.2	10.2	24.4	24.0	0.43	57.473 CC		
200.0	200.0	199.7	199.7	0.3	0.3	155.26	-22.3	10.3	24.6	24.0	0.62	39.693 ES		
300.0	300.0	298.4	298.3	0.5	0.5	151.83	-24.7	13.2	28.1	27.1	1.05	26.711		
400.0	400.0	396.4	395.9	0.7	0.8	-96.92	-30.3	20.1	36.8	35.2	1.52	24.129 SF		
500.0	499.8	492.6	491.2	1.0	1.1	-107.48	-38.9	30.6	52.1	50.1	2.03	25.722		
600.0	599.4	586.8	583.6	1.2	1.4	-114.54	-50.2	44.4	74.1	71.6	2.55	29.078		
700.0	699.1	678.9	673.1	1.4	1.8	-118.03	-64.0	61.3	101.5	98.4	3.09	32.790		
800.0	798.7	774.3	765.3	1.7	2.3	-119.99	-79.6	80.4	131.0	127.4	3.63	36.088		
900.0	898.3	869.8	857.5	2.0	2.8	-121.22	-95.2	99.5	160.7	156.5	4.17	38.574		
1,000.0	998.0	965.3	949.7	2.2	3.4	-122.08	-110.7	118.6	190.4	185.7	4.71	40.404		

CC - Min centre to center distance or convergent point, SF - min separation factor, ES - min ellipse separation

Cathedral Energy Services

Anticollision Report

Company:	Caerus Oil & Gas (NAD 27)	Local Co-ordinate Reference:	Well PUCKETT 42D-2
Project:	Garfield County, CO	TVD Reference:	KB=22' @ 8499.0usft
Reference Site:	S2-T7S-R97W (Puckett Pad)	MD Reference:	KB=22' @ 8499.0usft
Site Error:	0.0usft	North Reference:	True
Reference Well:	PUCKETT 42D-2	Survey Calculation Method:	Minimum Curvature
Well Error:	0.0usft	Output errors are at	2.00 sigma
Reference Wellbore	DD	Database:	USA EDM 5000 Multi Users DB
Reference Design:	Plan #1	Offset TVD Reference:	Offset Datum

Offset Design S2-T7S-R97W (Puckett Pad) - PUCKETT 41A-2 - DD - Plan #1													Offset Site Error:	0.0 usft
Survey Program: 0-ISCSWA MWD													Offset Well Error:	0.0 usft
Reference		Offset		Semi Major Axis			Distance						Warning	
Measured Depth (usft)	Vertical Depth (usft)	Measured Depth (usft)	Vertical Depth (usft)	Reference (usft)	Offset (usft)	Highside Toolface (°)	Offset Wellbore Centre +N/-S (usft)	+E/-W (usft)	Between Centres (usft)	Between Ellipses (usft)	Total Uncertainty Axis	Separation Factor		
0.0	0.0	0.0	0.0	0.0	0.0	-6.80	33.1	-4.0	33.4					
100.0	100.0	100.0	100.0	0.1	0.1	-6.80	33.1	-4.0	33.4	33.2	0.18	190.396		
200.0	200.0	200.0	200.0	0.3	0.3	-6.80	33.1	-4.0	33.4	32.8	0.62	53.420 CC, ES		
300.0	300.0	298.4	298.3	0.5	0.5	-4.96	35.5	-3.1	35.7	34.6	1.07	33.342		
400.0	400.0	396.1	395.8	0.7	0.8	119.47	42.6	-0.5	43.5	42.0	1.56	27.886 SF		
500.0	499.8	492.6	491.5	1.0	1.0	126.65	54.0	1.8	59.1	57.0	2.08	28.442		
600.0	599.4	587.7	585.3	1.2	1.3	129.62	69.3	1.7	80.0	77.5	2.56	31.307		
700.0	699.1	681.2	676.9	1.4	1.7	129.55	88.3	-0.8	104.7	101.6	3.06	34.259		
800.0	798.7	772.8	765.7	1.7	2.1	128.17	110.6	-5.5	132.8	129.3	3.58	37.120		
900.0	898.3	864.5	853.4	2.0	2.6	126.30	136.2	-12.2	164.3	160.2	4.13	39.800		
1,000.0	998.0	959.1	943.7	2.2	3.1	124.84	163.3	-19.5	196.5	191.9	4.68	42.027		

CC - Min centre to center distance or convergent point, SF - min separation factor, ES - min ellipse separation

Cathedral Energy Services

Anticollision Report

Company:	Caerus Oil & Gas (NAD 27)	Local Co-ordinate Reference:	Well PUCKETT 42D-2
Project:	Garfield County, CO	TVD Reference:	KB=22' @ 8499.0usft
Reference Site:	S2-T7S-R97W (Puckett Pad)	MD Reference:	KB=22' @ 8499.0usft
Site Error:	0.0usft	North Reference:	True
Reference Well:	PUCKETT 42D-2	Survey Calculation Method:	Minimum Curvature
Well Error:	0.0usft	Output errors are at	2.00 sigma
Reference Wellbore	DD	Database:	USA EDM 5000 Multi Users DB
Reference Design:	Plan #1	Offset TVD Reference:	Offset Datum

Offset Design													Offset Site Error:	0.0 usft	
Survey Program: 0-ISCSWA MWD													Offset Well Error:		0.0 usft
Reference															
Offset				Semi Major Axis			Distance								
Measured Depth (usft)	Vertical Depth (usft)	Measured Depth (usft)	Vertical Depth (usft)	Reference (usft)	Offset (usft)	Highside Toolface (°)	Offset Wellbore Centre +N/-S (usft)	Offset Wellbore Centre +E/-W (usft)	Between Centres (usft)	Between Ellipses (usft)	Total Uncertainty Axis	Separation Factor	Warning		
0.0	0.0	0.0	0.0	0.0	0.0	-11.06	40.4	-7.9	41.2						
100.0	100.0	100.0	100.0	0.1	0.1	-11.06	40.4	-7.9	41.2	41.0	0.18	234.973			
144.4	144.4	144.4	144.4	0.2	0.2	-11.06	40.4	-7.9	41.2	40.8	0.38	109.821	CC, ES		
200.0	200.0	199.2	199.1	0.3	0.3	-11.11	40.8	-8.0	41.6	41.0	0.62	66.765			
300.0	300.0	296.8	296.7	0.5	0.5	-11.56	45.1	-9.2	46.2	45.1	1.07	42.980			
400.0	400.0	393.7	393.1	0.7	0.8	107.56	54.2	-11.8	56.3	54.7	1.57	35.834			
500.0	499.8	489.0	487.4	1.0	1.1	110.96	67.6	-15.6	73.0	71.0	2.07	35.231	SF		
600.0	599.4	582.3	578.9	1.2	1.4	113.82	85.2	-20.5	95.5	92.9	2.59	36.891			
700.0	699.1	674.1	667.9	1.4	1.9	115.10	106.6	-26.5	122.6	119.5	3.13	39.167			
800.0	798.7	769.8	760.3	1.7	2.3	115.79	130.6	-33.3	151.5	147.9	3.66	41.362			
900.0	898.3	865.5	852.7	2.0	2.8	116.26	154.6	-40.1	180.5	176.3	4.20	42.969			

CC - Min centre to center distance or convergent point, SF - min separation factor, ES - min ellipse separation

Cathedral Energy Services

Anticollision Report

Company:	Caerus Oil & Gas (NAD 27)	Local Co-ordinate Reference:	Well PUCKETT 42D-2
Project:	Garfield County, CO	TVD Reference:	KB=22' @ 8499.0usft
Reference Site:	S2-T7S-R97W (Puckett Pad)	MD Reference:	KB=22' @ 8499.0usft
Site Error:	0.0usft	North Reference:	True
Reference Well:	PUCKETT 42D-2	Survey Calculation Method:	Minimum Curvature
Well Error:	0.0usft	Output errors are at	2.00 sigma
Reference Wellbore	DD	Database:	USA EDM 5000 Multi Users DB
Reference Design:	Plan #1	Offset TVD Reference:	Offset Datum

Offset Design													Offset Site Error:	0.0 usft	
Survey Program: 0-ISCSWA MWD													Offset Well Error:		0.0 usft
Reference															
Offset				Semi Major Axis			Distance								
Measured Depth (usft)	Vertical Depth (usft)	Measured Depth (usft)	Vertical Depth (usft)	Reference (usft)	Offset (usft)	Highside Toolface (°)	Offset Wellbore Centre +N/-S (usft)	+E/-W (usft)	Between Centres (usft)	Between Ellipses (usft)	Total Uncertainty Axis	Separation Factor	Warning		
0.0	0.0	0.0	0.0	0.0	0.0	-24.48	29.1	-13.3	32.0						
100.0	100.0	100.0	100.0	0.1	0.1	-24.48	29.1	-13.3	32.0	31.8	0.18	182.622			
200.0	200.0	200.0	200.0	0.3	0.3	-24.48	29.1	-13.3	32.0	31.4	0.62	51.239	CC, ES		
300.0	300.0	298.8	298.8	0.5	0.5	-23.46	30.6	-13.3	33.3	32.3	1.07	31.117			
400.0	400.0	396.8	396.6	0.7	0.8	100.77	36.9	-13.3	39.6	38.0	1.54	25.757	SF		
500.0	499.8	493.6	492.7	1.0	1.0	110.16	47.7	-14.1	52.5	50.5	2.03	25.848			
600.0	599.4	589.2	587.1	1.2	1.3	115.01	62.1	-17.8	71.1	68.6	2.52	28.190			
700.0	699.1	684.7	680.8	1.4	1.7	116.11	79.9	-24.3	93.6	90.5	3.04	30.758			
800.0	798.7	782.0	776.0	1.7	2.1	116.53	98.6	-31.5	116.7	113.2	3.56	32.820			
900.0	898.3	879.3	871.2	2.0	2.5	116.80	117.3	-38.7	139.9	135.8	4.08	34.262			
1,000.0	998.0	976.6	966.4	2.2	2.9	117.00	136.0	-45.9	163.1	158.5	4.62	35.300			
1,100.0	1,097.6	1,073.9	1,061.6	2.5	3.3	117.15	154.7	-53.1	186.3	181.1	5.16	36.075			

CC - Min centre to center distance or convergent point, SF - min separation factor, ES - min ellipse separation

Cathedral Energy Services

Anticollision Report

Company:	Caerus Oil & Gas (NAD 27)	Local Co-ordinate Reference:	Well PUCKETT 42D-2
Project:	Garfield County, CO	TVD Reference:	KB=22' @ 8499.0usft
Reference Site:	S2-T7S-R97W (Puckett Pad)	MD Reference:	KB=22' @ 8499.0usft
Site Error:	0.0usft	North Reference:	True
Reference Well:	PUCKETT 42D-2	Survey Calculation Method:	Minimum Curvature
Well Error:	0.0usft	Output errors are at	2.00 sigma
Reference Wellbore	DD	Database:	USA EDM 5000 Multi Users DB
Reference Design:	Plan #1	Offset TVD Reference:	Offset Datum

Offset Design S2-T7S-R97W (Puckett Pad) - PUCKETT 41D-2 - DD - Plan #1													Offset Site Error:	0.0 usft
Survey Program: 0-ISCSWA MWD													Offset Well Error:	0.0 usft
Reference		Offset		Semi Major Axis			Distance						Warning	
Measured Depth (usft)	Vertical Depth (usft)	Measured Depth (usft)	Vertical Depth (usft)	Reference (usft)	Offset (usft)	Highside Toolface (°)	Offset Wellbore Centre +N/-S (usft)	+E/-W (usft)	Between Centres (usft)	Between Ellipses (usft)	Total Uncertainty Axis	Separation Factor		
0.0	0.0	0.0	0.0	0.0	0.0	-24.57	36.4	-16.7	40.1					
100.0	100.0	100.0	100.0	0.1	0.1	-24.57	36.4	-16.7	40.1	39.9	0.18	228.444		
155.6	155.6	155.6	155.6	0.2	0.2	-24.57	36.4	-16.7	40.1	39.6	0.43	94.223 CC		
200.0	200.0	199.5	199.5	0.3	0.3	-24.58	36.6	-16.7	40.2	39.6	0.62	64.496 ES		
300.0	300.0	297.3	297.2	0.5	0.5	-24.75	39.9	-18.4	44.1	43.0	1.07	41.110		
400.0	400.0	394.4	393.9	0.7	0.8	94.94	47.7	-22.3	53.1	51.5	1.55	34.168		
500.0	499.8	490.5	489.1	1.0	1.1	99.32	59.7	-28.3	67.8	65.7	2.05	33.104 SF		
600.0	599.4	588.8	586.1	1.2	1.4	103.47	73.7	-35.3	85.2	82.6	2.54	33.530		
700.0	699.1	687.1	683.2	1.4	1.7	106.21	87.7	-42.3	102.9	99.8	3.05	33.782		
800.0	798.7	785.5	780.3	1.7	2.1	108.15	101.7	-49.3	120.7	117.2	3.56	33.872		
900.0	898.3	883.8	877.3	2.0	2.4	109.58	115.7	-56.3	138.7	134.6	4.09	33.891		
1,000.0	998.0	982.1	974.4	2.2	2.8	110.69	129.7	-63.3	156.7	152.0	4.62	33.876		
1,100.0	1,097.6	1,080.4	1,071.5	2.5	3.2	111.57	143.7	-70.3	174.7	169.6	5.16	33.842		
1,200.0	1,197.3	1,178.8	1,168.6	2.8	3.5	112.28	157.7	-77.3	192.8	187.1	5.70	33.808		

CC - Min centre to center distance or convergent point, SF - min separation factor, ES - min ellipse separation

Cathedral Energy Services

Anticollision Report

Company:	Caerus Oil & Gas (NAD 27)	Local Co-ordinate Reference:	Well PUCKETT 42D-2
Project:	Garfield County, CO	TVD Reference:	KB=22' @ 8499.0usft
Reference Site:	S2-T7S-R97W (Puckett Pad)	MD Reference:	KB=22' @ 8499.0usft
Site Error:	0.0usft	North Reference:	True
Reference Well:	PUCKETT 42D-2	Survey Calculation Method:	Minimum Curvature
Well Error:	0.0usft	Output errors are at	2.00 sigma
Reference Wellbore	DD	Database:	USA EDM 5000 Multi Users DB
Reference Design:	Plan #1	Offset TVD Reference:	Offset Datum

Offset Design													Offset Site Error:	0.0 usft
S2-T7S-R97W (Puckett Pad) - PUCKETT 42A-2 - DD - Plan #1													Offset Well Error:	0.0 usft
Survey Program: 0-ISCSWA MWD														
Reference		Offset		Semi Major Axis			Distance						Warning	
Measured Depth (usft)	Vertical Depth (usft)	Measured Depth (usft)	Vertical Depth (usft)	Reference (usft)	Offset (usft)	Highside Toolface (°)	Offset Wellbore Centre +N/-S (usft)	+E/-W (usft)	Between Centres (usft)	Between Ellipses (usft)	Total Uncertainty Axis	Separation Factor		
0.0	0.0	0.0	0.0	0.0	0.0	-25.69	21.1	-10.2	23.4					
100.0	100.0	100.0	100.0	0.1	0.1	-25.69	21.1	-10.2	23.4	23.3	0.18	133.715		
200.0	200.0	200.0	200.0	0.3	0.3	-25.69	21.1	-10.2	23.4	22.8	0.62	37.517		
255.6	255.6	255.6	255.6	0.4	0.4	-25.69	21.1	-10.2	23.4	22.6	0.87	26.804	CC	
300.0	300.0	299.7	299.7	0.5	0.5	-25.76	21.3	-10.3	23.6	22.5	1.07	21.993	ES	
400.0	400.0	398.3	398.2	0.7	0.8	94.35	24.3	-12.5	27.5	26.0	1.52	18.131	SF	
500.0	499.8	496.2	495.7	1.0	1.0	101.11	31.4	-17.7	37.1	35.1	1.99	18.641		
600.0	599.4	595.0	593.8	1.2	1.3	105.94	41.1	-24.9	50.4	47.9	2.49	20.252		
700.0	699.1	694.0	692.0	1.4	1.6	108.72	50.9	-32.1	64.0	61.0	2.99	21.399		
800.0	798.7	793.1	790.3	1.7	1.9	110.53	60.7	-39.3	77.7	74.2	3.51	22.168		
900.0	898.3	892.1	888.6	2.0	2.2	111.79	70.5	-46.5	91.5	87.5	4.03	22.707		
1,000.0	998.0	991.1	986.9	2.2	2.5	112.73	80.3	-53.7	105.3	100.7	4.56	23.102		
1,100.0	1,097.6	1,090.2	1,085.2	2.5	2.8	113.44	90.0	-60.9	119.1	114.0	5.09	23.403		
1,200.0	1,197.3	1,189.2	1,183.5	2.8	3.1	114.01	99.8	-68.1	132.9	127.3	5.62	23.637		
1,300.0	1,296.9	1,288.2	1,281.8	3.1	3.4	114.47	109.6	-75.3	146.7	140.6	6.16	23.827		
1,400.0	1,396.6	1,387.3	1,380.1	3.3	3.7	114.86	119.4	-82.5	160.6	153.9	6.69	23.982		
1,500.0	1,496.2	1,486.3	1,478.3	3.6	4.0	115.18	129.1	-89.7	174.4	167.2	7.23	24.111		
1,600.0	1,595.9	1,585.3	1,576.6	3.9	4.3	115.45	138.9	-96.9	188.2	180.5	7.77	24.222		

CC - Min centre to center distance or convergent point, SF - min separation factor, ES - min ellipse separation

Cathedral Energy Services

Anticollision Report

Company:	Caerus Oil & Gas (NAD 27)	Local Co-ordinate Reference:	Well PUCKETT 42D-2
Project:	Garfield County, CO	TVD Reference:	KB=22' @ 8499.0usft
Reference Site:	S2-T7S-R97W (Puckett Pad)	MD Reference:	KB=22' @ 8499.0usft
Site Error:	0.0usft	North Reference:	True
Reference Well:	PUCKETT 42D-2	Survey Calculation Method:	Minimum Curvature
Well Error:	0.0usft	Output errors are at	2.00 sigma
Reference Wellbore	DD	Database:	USA EDM 5000 Multi Users DB
Reference Design:	Plan #1	Offset TVD Reference:	Offset Datum

Offset Design													Offset Site Error:	0.0 usft
S2-T7S-R97W (Puckett Pad) - PUCKETT 42B-2 - DD - Plan #1													Offset Well Error:	0.0 usft
Survey Program: 0-ISCSWA MWD														
Reference		Offset		Semi Major Axis			Distance							
Measured Depth (usft)	Vertical Depth (usft)	Measured Depth (usft)	Vertical Depth (usft)	Reference (usft)	Offset (usft)	Highside Toolface (°)	Offset Wellbore Centre +N/-S (usft)	+E/-W (usft)	Between Centres (usft)	Between Ellipses (usft)	Total Uncertainty Axis	Separation Factor	Warning	
0.0	0.0	0.0	0.0	0.0	0.0	-26.42	14.2	-7.1	15.9					
100.0	100.0	100.0	100.0	0.1	0.1	-26.42	14.2	-7.1	15.9	15.7	0.18	90.473		
200.0	200.0	200.0	200.0	0.3	0.3	-26.42	14.2	-7.1	15.9	15.2	0.62	25.384		
300.0	300.0	300.0	300.0	0.5	0.5	-26.42	14.2	-7.1	15.9	14.8	1.07	14.763	CC, ES	
400.0	400.0	399.4	399.4	0.7	0.8	94.80	15.1	-8.2	17.2	15.7	1.51	11.416	SF	
500.0	499.8	498.3	498.1	1.0	1.0	102.34	18.8	-13.4	23.6	21.6	1.97	11.976		
600.0	599.4	597.9	597.3	1.2	1.2	106.99	24.0	-20.7	32.6	30.1	2.45	13.276		
700.0	699.1	697.5	696.4	1.4	1.5	109.62	29.3	-28.0	41.7	38.8	2.95	14.123		
800.0	798.7	797.0	795.6	1.7	1.8	111.30	34.5	-35.3	50.9	47.4	3.46	14.692		
900.0	898.3	896.6	894.7	2.0	2.0	112.47	39.8	-42.6	60.1	56.1	3.98	15.095		
1,000.0	998.0	996.2	993.9	2.2	2.3	113.33	45.0	-49.9	69.3	64.8	4.50	15.393		
1,100.0	1,097.6	1,095.7	1,093.1	2.5	2.6	113.98	50.2	-57.2	78.6	73.6	5.03	15.621		
1,200.0	1,197.3	1,195.3	1,192.2	2.8	2.8	114.50	55.5	-64.5	87.8	82.3	5.56	15.801		
1,300.0	1,296.9	1,294.9	1,291.4	3.1	3.1	114.92	60.7	-71.7	97.1	91.0	6.09	15.947		
1,400.0	1,396.6	1,394.4	1,390.6	3.3	3.4	115.26	66.0	-79.0	106.4	99.7	6.62	16.067		
1,500.0	1,496.2	1,494.0	1,489.7	3.6	3.7	115.56	71.2	-86.3	115.6	108.5	7.15	16.168		
1,600.0	1,595.9	1,593.6	1,588.9	3.9	3.9	115.80	76.4	-93.6	124.9	117.2	7.68	16.253		
1,700.0	1,695.5	1,693.1	1,688.0	4.2	4.2	116.02	81.7	-100.9	134.2	126.0	8.22	16.327		
1,800.0	1,795.2	1,792.7	1,787.2	4.4	4.5	116.20	86.9	-108.2	143.4	134.7	8.75	16.392		
1,900.0	1,894.8	1,892.3	1,886.4	4.7	4.8	116.36	92.2	-115.5	152.7	143.4	9.28	16.448		
2,000.0	1,994.5	1,991.9	1,985.5	5.0	5.0	116.51	97.4	-122.8	162.0	152.2	9.82	16.499		
2,100.0	2,094.1	2,091.4	2,084.7	5.3	5.3	116.64	102.6	-130.1	171.3	160.9	10.35	16.544		
2,200.0	2,193.7	2,191.0	2,183.9	5.5	5.6	116.75	107.9	-137.3	180.5	169.7	10.89	16.584		
2,300.0	2,293.4	2,290.6	2,283.0	5.8	5.9	116.86	113.1	-144.6	189.8	178.4	11.42	16.621		
2,400.0	2,393.0	2,390.1	2,382.2	6.1	6.2	116.95	118.4	-151.9	199.1	187.1	11.95	16.655		

CC - Min centre to center distance or convergent point, SF - min separation factor, ES - min ellipse separation

Cathedral Energy Services

Anticollision Report

Company:	Caerus Oil & Gas (NAD 27)	Local Co-ordinate Reference:	Well PUCKETT 42D-2
Project:	Garfield County, CO	TVD Reference:	KB=22' @ 8499.0usft
Reference Site:	S2-T7S-R97W (Puckett Pad)	MD Reference:	KB=22' @ 8499.0usft
Site Error:	0.0usft	North Reference:	True
Reference Well:	PUCKETT 42D-2	Survey Calculation Method:	Minimum Curvature
Well Error:	0.0usft	Output errors are at	2.00 sigma
Reference Wellbore	DD	Database:	USA EDM 5000 Multi Users DB
Reference Design:	Plan #1	Offset TVD Reference:	Offset Datum

Offset Design													Offset Site Error:	0.0 usft
S2-T7S-R97W (Puckett Pad) - PUCKETT 42C-2 - DD - Plan #1													Offset Well Error:	0.0 usft
Survey Program: 0-ISCSWA MWD														
Reference		Offset		Semi Major Axis			Distance							
Measured Depth (usft)	Vertical Depth (usft)	Measured Depth (usft)	Vertical Depth (usft)	Reference (usft)	Offset (usft)	Highside Toolface (°)	Offset Wellbore Centre +N/-S (usft)	+E/-W (usft)	Between Centres (usft)	Between Ellipses (usft)	Total Uncertainty Axis	Separation Factor	Warning	
0.0	0.0	0.0	0.0	0.0	0.0	-24.17	6.9	-3.1	7.6					
100.0	100.0	100.0	100.0	0.1	0.1	-24.17	6.9	-3.1	7.6	7.4	0.18	43.265		
200.0	200.0	200.0	200.0	0.3	0.3	-24.17	6.9	-3.1	7.6	7.0	0.62	12.139		
300.0	300.0	300.0	300.0	0.5	0.5	-24.17	6.9	-3.1	7.6	6.5	1.07	7.060	CC	
334.9	334.9	334.9	334.9	0.6	0.6	96.28	6.9	-3.1	7.6	6.4	1.23	6.202	ES	
400.0	400.0	399.9	399.9	0.7	0.8	104.13	6.9	-3.3	7.9	6.4	1.51	5.228	SF	
500.0	499.8	499.8	499.7	1.0	1.0	117.60	7.3	-7.2	11.1	9.1	1.96	5.659		
600.0	599.4	599.7	599.3	1.2	1.2	118.13	7.9	-14.5	15.7	13.3	2.42	6.489		
700.0	699.1	699.6	698.9	1.4	1.4	118.21	8.5	-21.9	20.3	17.4	2.91	6.998		
800.0	798.7	799.4	798.5	1.7	1.7	118.26	9.1	-29.2	25.0	21.6	3.41	7.329		
900.0	898.3	899.3	898.2	2.0	1.9	118.29	9.7	-36.6	29.6	25.7	3.92	7.559		
1,000.0	998.0	999.2	997.8	2.2	2.2	118.32	10.3	-44.0	34.2	29.8	4.43	7.725		
1,100.0	1,097.6	1,099.1	1,097.4	2.5	2.5	118.34	10.9	-51.4	38.9	33.9	4.95	7.851		
1,200.0	1,197.3	1,199.0	1,197.0	2.8	2.7	118.35	11.5	-58.8	43.5	38.0	5.47	7.949		
1,300.0	1,296.9	1,298.9	1,296.6	3.1	3.0	118.36	12.1	-66.1	48.2	42.2	6.00	8.027		
1,400.0	1,396.6	1,398.8	1,396.2	3.3	3.2	118.37	12.7	-73.5	52.8	46.3	6.53	8.090		
1,500.0	1,496.2	1,498.7	1,495.9	3.6	3.5	118.38	13.3	-80.9	57.4	50.4	7.05	8.143		
1,600.0	1,595.9	1,598.6	1,595.5	3.9	3.8	118.39	13.9	-88.3	62.1	54.5	7.58	8.188		
1,700.0	1,695.5	1,698.5	1,695.1	4.2	4.0	118.39	14.5	-95.7	66.7	58.6	8.11	8.226		
1,800.0	1,795.2	1,798.4	1,794.7	4.4	4.3	118.40	15.1	-103.0	71.3	62.7	8.64	8.258		
1,900.0	1,894.8	1,898.3	1,894.3	4.7	4.5	118.40	15.7	-110.4	76.0	66.8	9.17	8.287		
2,000.0	1,994.5	1,998.2	1,993.9	5.0	4.8	118.41	16.3	-117.8	80.6	70.9	9.70	8.312		
2,100.0	2,094.1	2,098.0	2,093.6	5.3	5.1	118.41	16.9	-125.2	85.2	75.0	10.23	8.335		
2,200.0	2,193.7	2,197.9	2,193.2	5.5	5.3	118.41	17.6	-132.6	89.9	79.1	10.76	8.355		
2,300.0	2,293.4	2,297.8	2,292.8	5.8	5.6	118.42	18.2	-140.0	94.5	83.2	11.29	8.373		
2,400.0	2,393.0	2,397.7	2,392.4	6.1	5.9	118.42	18.8	-147.3	99.2	87.3	11.82	8.389		
2,500.0	2,492.7	2,497.6	2,492.0	6.4	6.1	118.42	19.4	-154.7	103.8	91.4	12.35	8.404		
2,600.0	2,592.3	2,597.5	2,591.7	6.6	6.4	118.43	20.0	-162.1	108.4	95.5	12.88	8.418		
2,700.0	2,692.0	2,697.4	2,691.3	6.9	6.6	118.43	20.6	-169.5	113.1	99.6	13.41	8.430		
2,800.0	2,791.6	2,797.3	2,790.9	7.2	6.9	118.43	21.2	-176.9	117.7	103.8	13.94	8.442		
2,900.0	2,891.3	2,897.2	2,890.5	7.5	7.2	118.43	21.8	-184.2	122.3	107.9	14.47	8.453		
3,000.0	2,990.9	2,997.1	2,990.1	7.7	7.4	118.43	22.4	-191.6	127.0	112.0	15.00	8.463		
3,100.0	3,090.6	3,097.0	3,089.7	8.0	7.7	118.43	23.0	-199.0	131.6	116.1	15.53	8.472		
3,200.0	3,190.2	3,196.9	3,189.4	8.3	8.0	118.44	23.6	-206.4	136.2	120.2	16.07	8.481		
3,300.0	3,289.9	3,296.8	3,289.0	8.6	8.2	118.44	24.2	-213.8	140.9	124.3	16.60	8.489		
3,400.0	3,389.5	3,396.6	3,388.6	8.9	8.5	118.44	24.8	-221.1	145.5	128.4	17.13	8.496		
3,500.0	3,489.1	3,496.5	3,488.2	9.1	8.8	118.44	25.4	-228.5	150.1	132.5	17.66	8.504		
3,600.0	3,588.8	3,596.4	3,587.8	9.4	9.0	118.44	26.0	-235.9	154.8	136.6	18.19	8.510		
3,700.0	3,688.4	3,696.3	3,687.4	9.7	9.3	118.44	26.6	-243.3	159.4	140.7	18.72	8.517		
3,800.0	3,788.1	3,796.2	3,787.1	10.0	9.5	118.44	27.2	-250.7	164.1	144.8	19.25	8.523		
3,900.0	3,887.7	3,896.1	3,886.7	10.2	9.8	118.44	27.9	-258.0	168.7	148.9	19.78	8.529		
4,000.0	3,987.4	3,996.0	3,986.3	10.5	10.1	118.44	28.5	-265.4	173.3	153.0	20.31	8.534		
4,100.0	4,087.0	4,095.9	4,085.9	10.8	10.3	118.44	29.1	-272.8	178.0	157.1	20.84	8.540		
4,200.0	4,186.7	4,195.8	4,185.5	11.1	10.6	118.45	29.7	-280.2	182.6	161.2	21.37	8.545		
4,300.0	4,286.3	4,295.7	4,285.2	11.4	10.9	118.45	30.3	-287.6	187.2	165.3	21.90	8.550		
4,400.0	4,386.0	4,395.6	4,384.8	11.6	11.1	118.45	30.9	-295.0	191.9	169.4	22.43	8.555		
4,500.0	4,485.6	4,495.5	4,484.4	11.9	11.4	118.45	31.5	-302.3	196.5	173.6	22.96	8.559		

CC - Min centre to center distance or convergent point, SF - min separation factor, ES - min ellipse separation

Cathedral Energy Services

Anticollision Report

Company:	Caerus Oil & Gas (NAD 27)	Local Co-ordinate Reference:	Well PUCKETT 42D-2
Project:	Garfield County, CO	TVD Reference:	KB=22' @ 8499.0usft
Reference Site:	S2-T7S-R97W (Puckett Pad)	MD Reference:	KB=22' @ 8499.0usft
Site Error:	0.0usft	North Reference:	True
Reference Well:	PUCKETT 42D-2	Survey Calculation Method:	Minimum Curvature
Well Error:	0.0usft	Output errors are at	2.00 sigma
Reference Wellbore	DD	Database:	USA EDM 5000 Multi Users DB
Reference Design:	Plan #1	Offset TVD Reference:	Offset Datum

Offset Design													Offset Site Error:	0.0 usft
S2-T7S-R97W (Puckett Pad) - PUCKETT 43A-2 - DD - Plan #1													Offset Well Error:	0.0 usft
Survey Program: 0-ISCSWA MWD														
Reference		Offset		Semi Major Axis			Distance							
Measured Depth (usft)	Vertical Depth (usft)	Measured Depth (usft)	Vertical Depth (usft)	Reference (usft)	Offset (usft)	Highside Toolface (°)	Offset Wellbore Centre +N/-S (usft)	+E/-W (usft)	Between Centres (usft)	Between Ellipses (usft)	Total Uncertainty Axis	Separation Factor	Warning	
0.0	0.0	0.0	0.0	0.0	0.0	156.91	-7.3	3.1	7.9					
100.0	100.0	100.0	100.0	0.1	0.1	156.91	-7.3	3.1	7.9	7.7	0.18	45.168		
200.0	200.0	200.0	200.0	0.3	0.3	156.91	-7.3	3.1	7.9	7.3	0.62	12.673		
255.8	255.8	255.8	255.8	0.4	0.4	156.91	-7.3	3.1	7.9	7.0	0.88	9.042 CC		
300.0	300.0	300.0	300.0	0.5	0.5	157.96	-7.4	3.0	8.0	6.9	1.07	7.482 ES		
400.0	400.0	399.7	399.6	0.7	0.7	-71.56	-10.4	0.5	9.8	8.4	1.48	6.647 SF		
500.0	499.8	499.2	498.7	1.0	1.0	-67.68	-17.3	-5.4	13.6	11.6	1.94	7.011		
600.0	599.4	599.1	597.9	1.2	1.2	-65.97	-25.9	-12.8	18.2	15.8	2.42	7.519		
700.0	699.1	699.0	697.2	1.4	1.5	-64.96	-34.6	-20.2	22.8	19.9	2.92	7.806		
800.0	798.7	798.9	796.4	1.7	1.8	-64.28	-43.2	-27.6	27.4	24.0	3.44	7.982		
900.0	898.3	898.8	895.7	2.0	2.1	-63.80	-51.9	-35.0	32.1	28.1	3.96	8.099		
1,000.0	998.0	998.7	994.9	2.2	2.4	-63.45	-60.5	-42.3	36.7	32.2	4.49	8.180		
1,100.0	1,097.6	1,098.6	1,094.2	2.5	2.7	-63.17	-69.1	-49.7	41.3	36.3	5.01	8.240		
1,200.0	1,197.3	1,198.5	1,193.4	2.8	3.0	-62.95	-77.8	-57.1	45.9	40.4	5.55	8.285		
1,300.0	1,296.9	1,298.4	1,292.7	3.1	3.4	-62.77	-86.4	-64.5	50.6	44.5	6.08	8.320		
1,400.0	1,396.6	1,398.3	1,391.9	3.3	3.7	-62.61	-95.1	-71.9	55.2	48.6	6.61	8.348		
1,500.0	1,496.2	1,498.1	1,491.1	3.6	4.0	-62.49	-103.7	-79.3	59.8	52.7	7.15	8.371		
1,600.0	1,595.9	1,598.0	1,590.4	3.9	4.3	-62.38	-112.4	-86.6	64.5	56.8	7.68	8.390		
1,700.0	1,695.5	1,697.9	1,689.6	4.2	4.6	-62.28	-121.0	-94.0	69.1	60.9	8.22	8.406		
1,800.0	1,795.2	1,797.8	1,788.9	4.4	4.9	-62.20	-129.7	-101.4	73.7	65.0	8.76	8.419		
1,900.0	1,894.8	1,897.7	1,888.1	4.7	5.2	-62.13	-138.3	-108.8	78.4	69.1	9.29	8.431		
2,000.0	1,994.5	1,997.6	1,987.4	5.0	5.5	-62.06	-146.9	-116.2	83.0	73.2	9.83	8.441		
2,100.0	2,094.1	2,097.5	2,086.6	5.3	5.8	-62.01	-155.6	-123.6	87.6	77.3	10.37	8.450		
2,200.0	2,193.7	2,197.4	2,185.8	5.5	6.2	-61.95	-164.2	-131.0	92.3	81.3	10.91	8.459		
2,300.0	2,293.4	2,297.3	2,285.1	5.8	6.5	-61.91	-172.9	-138.3	96.9	85.4	11.44	8.466		
2,400.0	2,393.0	2,397.2	2,384.3	6.1	6.8	-61.86	-181.5	-145.7	101.5	89.5	11.98	8.472		
2,500.0	2,492.7	2,497.1	2,483.6	6.4	7.1	-61.82	-190.2	-153.1	106.1	93.6	12.52	8.478		
2,600.0	2,592.3	2,597.0	2,582.8	6.6	7.4	-61.79	-198.8	-160.5	110.8	97.7	13.06	8.484		
2,700.0	2,692.0	2,696.9	2,682.1	6.9	7.7	-61.76	-207.5	-167.9	115.4	101.8	13.60	8.489		
2,800.0	2,791.6	2,796.7	2,781.3	7.2	8.0	-61.72	-216.1	-175.3	120.0	105.9	14.13	8.494		
2,900.0	2,891.3	2,896.6	2,880.6	7.5	8.4	-61.70	-224.7	-182.6	124.7	110.0	14.67	8.498		
3,000.0	2,990.9	2,996.5	2,979.8	7.7	8.7	-61.67	-233.4	-190.0	129.3	114.1	15.21	8.502		
3,100.0	3,090.6	3,096.4	3,079.0	8.0	9.0	-61.65	-242.0	-197.4	133.9	118.2	15.75	8.506		
3,200.0	3,190.2	3,196.3	3,178.3	8.3	9.3	-61.62	-250.7	-204.8	138.6	122.3	16.28	8.510		
3,300.0	3,289.9	3,296.2	3,277.5	8.6	9.6	-61.60	-259.3	-212.2	143.2	126.4	16.82	8.513		
3,400.0	3,389.5	3,396.1	3,376.8	8.9	9.9	-61.58	-268.0	-219.6	147.8	130.5	17.36	8.516		
3,500.0	3,489.1	3,496.0	3,476.0	9.1	10.2	-61.56	-276.6	-226.9	152.5	134.6	17.90	8.519		
3,600.0	3,588.8	3,595.9	3,575.3	9.4	10.6	-61.55	-285.3	-234.3	157.1	138.7	18.43	8.522		
3,700.0	3,688.4	3,695.8	3,674.5	9.7	10.9	-61.53	-293.9	-241.7	161.7	142.8	18.97	8.525		
3,800.0	3,788.1	3,795.7	3,773.7	10.0	11.2	-61.51	-302.5	-249.1	166.4	146.8	19.51	8.528		
3,900.0	3,887.7	3,895.6	3,873.0	10.2	11.5	-61.50	-311.2	-256.5	171.0	150.9	20.05	8.530		
4,000.0	3,987.4	3,995.5	3,972.2	10.5	11.8	-61.48	-319.8	-263.9	175.6	155.0	20.58	8.533		
4,100.0	4,087.0	4,095.4	4,071.5	10.8	12.1	-61.47	-328.5	-271.2	180.3	159.1	21.12	8.535		
4,200.0	4,186.7	4,195.2	4,170.7	11.1	12.4	-61.46	-337.1	-278.6	184.9	163.2	21.66	8.537		
4,300.0	4,286.3	4,295.1	4,270.0	11.4	12.7	-61.45	-345.8	-286.0	189.5	167.3	22.19	8.539		
4,400.0	4,386.0	4,395.0	4,369.2	11.6	13.1	-61.44	-354.4	-293.4	194.1	171.4	22.73	8.542		
4,500.0	4,485.6	4,494.9	4,468.4	11.9	13.4	-61.42	-363.1	-300.8	198.8	175.5	23.27	8.544		

CC - Min centre to center distance or convergent point, SF - min separation factor, ES - min ellipse separation

Cathedral Energy Services

Anticollision Report

Company:	Caerus Oil & Gas (NAD 27)	Local Co-ordinate Reference:	Well PUCKETT 42D-2
Project:	Garfield County, CO	TVD Reference:	KB=22' @ 8499.0usft
Reference Site:	S2-T7S-R97W (Puckett Pad)	MD Reference:	KB=22' @ 8499.0usft
Site Error:	0.0usft	North Reference:	True
Reference Well:	PUCKETT 42D-2	Survey Calculation Method:	Minimum Curvature
Well Error:	0.0usft	Output errors are at	2.00 sigma
Reference Wellbore	DD	Database:	USA EDM 5000 Multi Users DB
Reference Design:	Plan #1	Offset TVD Reference:	Offset Datum

Offset Design													Offset Site Error:	0.0 usft
S2-T7S-R97W (Puckett Pad) - PUCKETT 43B-2 - DD - Plan #1													Offset Well Error:	0.0 usft
Survey Program: 0-ISCSWA MWD														
Reference		Offset		Semi Major Axis			Distance						Warning	
Measured Depth (usft)	Vertical Depth (usft)	Measured Depth (usft)	Vertical Depth (usft)	Reference (usft)	Offset (usft)	Highside Toolface (°)	Offset Wellbore Centre +N/-S (usft)	+E/-W (usft)	Between Centres (usft)	Between Ellipses (usft)	Total Uncertainty Axis	Separation Factor		
0.0	0.0	0.0	0.0	0.0	0.0	157.90	-15.3	6.2	16.5					
100.0	100.0	100.0	100.0	0.1	0.1	157.90	-15.3	6.2	16.5	16.3	0.18	94.149		
200.0	200.0	200.0	200.0	0.3	0.3	157.90	-15.3	6.2	16.5	15.9	0.62	26.416	CC, ES	
300.0	300.0	299.6	299.5	0.5	0.5	161.63	-16.6	5.5	17.5	16.4	1.06	16.520		
400.0	400.0	398.7	398.4	0.7	0.7	-70.85	-22.2	2.4	21.8	20.3	1.49	14.670	SF	
500.0	499.8	497.4	496.5	1.0	1.0	-68.37	-32.2	-3.3	28.8	26.9	1.96	14.729		
600.0	599.4	596.7	594.7	1.2	1.3	-66.62	-45.3	-10.6	37.9	35.5	2.46	15.405		
700.0	699.1	696.3	693.1	1.4	1.6	-65.48	-58.5	-18.0	47.2	44.2	2.98	15.836		
800.0	798.7	795.9	791.5	1.7	2.0	-64.72	-71.7	-25.4	56.4	52.9	3.50	16.090		
900.0	898.3	895.4	889.9	2.0	2.3	-64.17	-84.9	-32.7	65.6	61.6	4.04	16.251		
1,000.0	998.0	995.0	988.3	2.2	2.7	-63.75	-98.1	-40.1	74.8	70.3	4.57	16.360		
1,100.0	1,097.6	1,094.6	1,086.7	2.5	3.1	-63.43	-111.3	-47.5	84.1	79.0	5.12	16.437		
1,200.0	1,197.3	1,194.2	1,185.2	2.8	3.4	-63.17	-124.5	-54.9	93.3	87.7	5.66	16.494		
1,300.0	1,296.9	1,293.7	1,283.6	3.1	3.8	-62.95	-137.7	-62.3	102.6	96.4	6.20	16.536		
1,400.0	1,396.6	1,393.3	1,382.0	3.3	4.2	-62.78	-150.9	-69.7	111.8	105.1	6.75	16.570		
1,500.0	1,496.2	1,492.9	1,480.4	3.6	4.5	-62.63	-164.1	-77.1	121.1	113.8	7.29	16.597		
1,600.0	1,595.9	1,592.4	1,578.8	3.9	4.9	-62.50	-177.3	-84.4	130.3	122.5	7.84	16.620		
1,700.0	1,695.5	1,692.0	1,677.2	4.2	5.2	-62.39	-190.5	-91.8	139.5	131.2	8.39	16.638		
1,800.0	1,795.2	1,791.6	1,775.7	4.4	5.6	-62.29	-203.7	-99.2	148.8	139.9	8.93	16.654		
1,900.0	1,894.8	1,891.2	1,874.1	4.7	6.0	-62.20	-216.9	-106.6	158.0	148.6	9.48	16.668		
2,000.0	1,994.5	1,990.7	1,972.5	5.0	6.3	-62.12	-230.1	-114.0	167.3	157.3	10.03	16.680		
2,100.0	2,094.1	2,090.3	2,070.9	5.3	6.7	-62.05	-243.3	-121.4	176.5	166.0	10.58	16.691		
2,200.0	2,193.7	2,189.9	2,169.3	5.5	7.1	-61.99	-256.5	-128.8	185.8	174.7	11.12	16.701		
2,300.0	2,293.4	2,289.4	2,267.7	5.8	7.4	-61.94	-269.7	-136.1	195.0	183.4	11.67	16.710		

CC - Min centre to center distance or convergent point, SF - min separation factor, ES - min ellipse separation

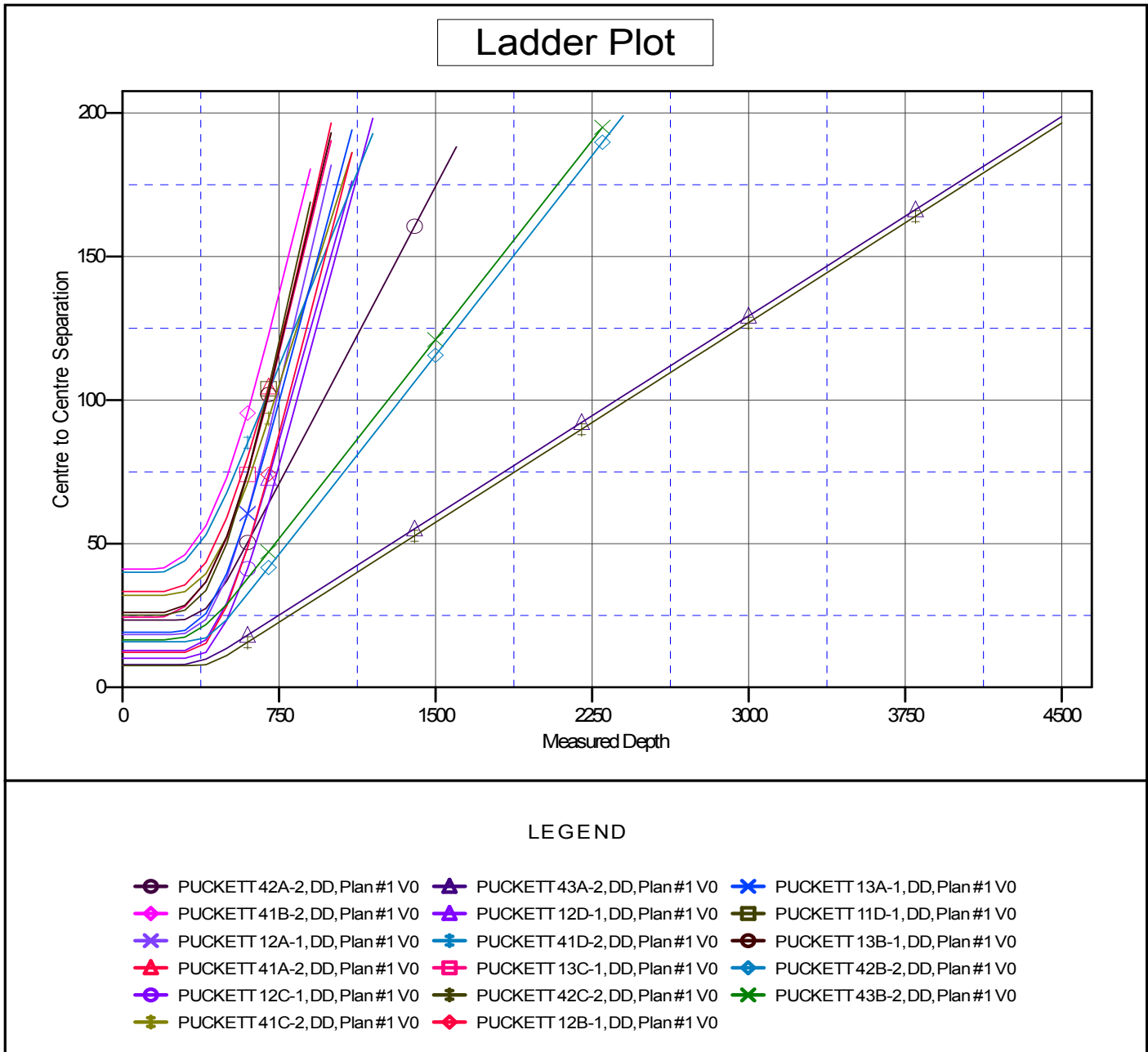
Cathedral Energy Services

Anticollision Report

Company: Caerus Oil & Gas (NAD 27)	Local Co-ordinate Reference: Well PUCKETT 42D-2	
Project: Garfield County, CO	TVD Reference: KB=22' @ 8499.0usft	
Reference Site: S2-T7S-R97W (Puckett Pad)	MD Reference: KB=22' @ 8499.0usft	
Site Error: 0.0usft	North Reference: True	
Reference Well: PUCKETT 42D-2	Survey Calculation Method: Minimum Curvature	
Well Error: 0.0usft	Output errors are at 2.00 sigma	
Reference Wellbore DD	Database: USA EDM 5000 Multi Users DB	
Reference Design: Plan #1	Offset TVD Reference: Offset Datum	

Reference Depths are relative to KB=22' @ 8499.0usft
 Offset Depths are relative to Offset Datum
 Central Meridian is -105.500000 °

Coordinates are relative to: PUCKETT 42D-2
 Coordinate System is US State Plane 1927 (Exact solution), Colorado Central 502
 Grid Convergence at Surface is: -1.69°



CC - Min centre to center distance or convergent point, SF - min separation factor, ES - min ellipse separation