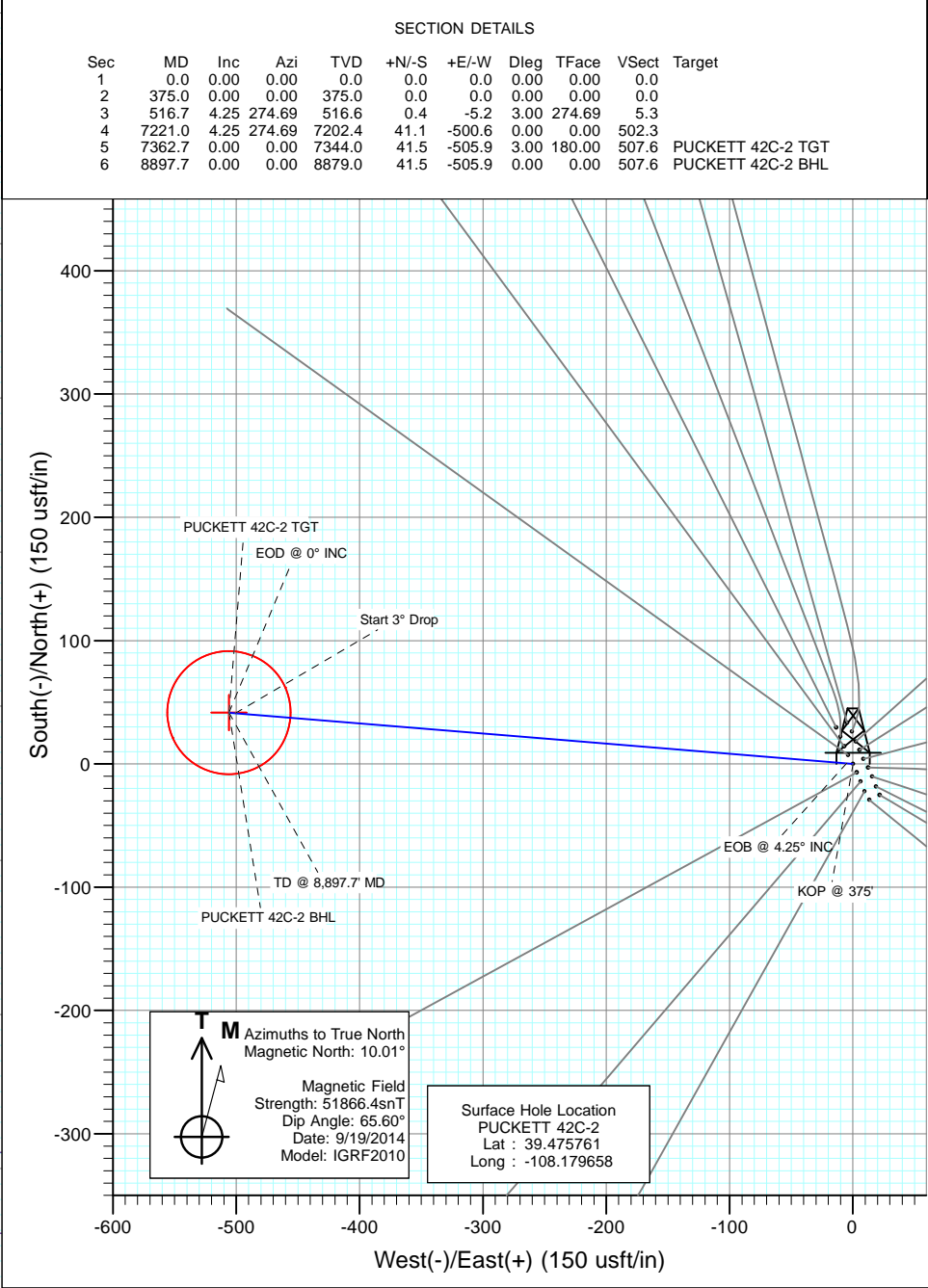
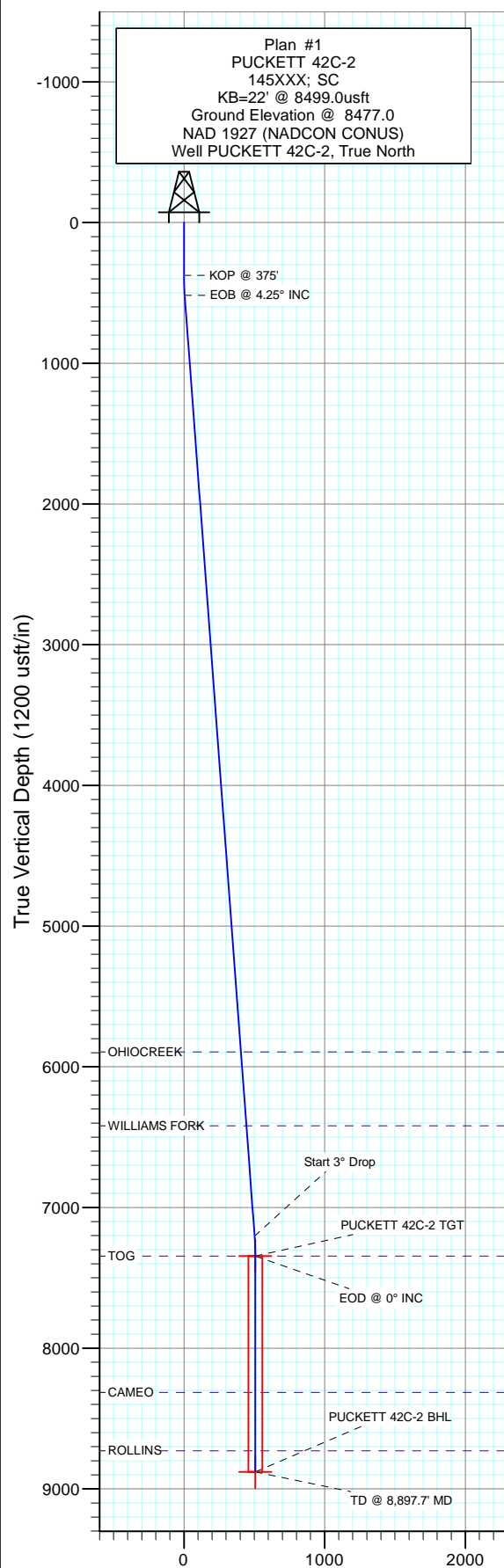


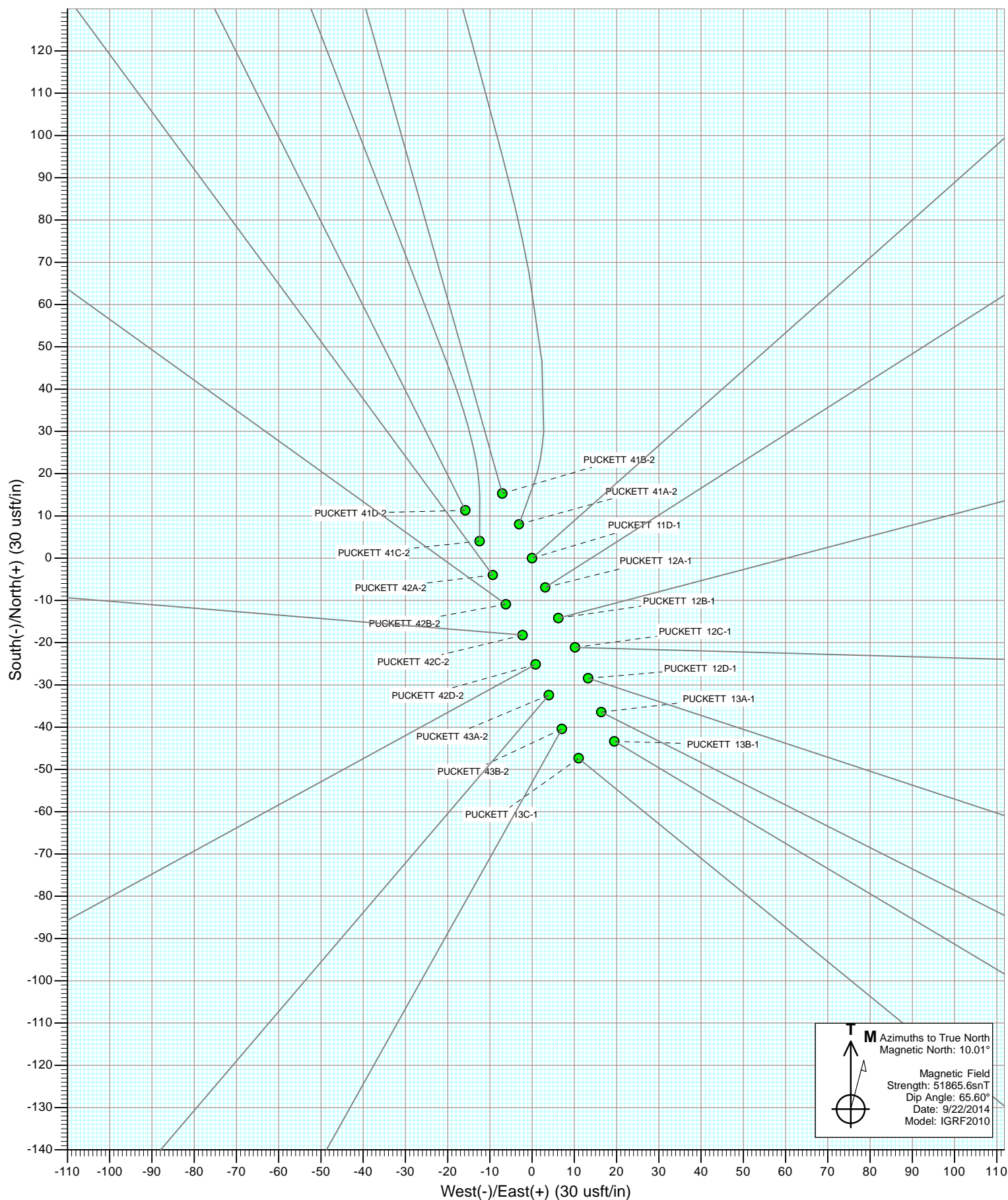


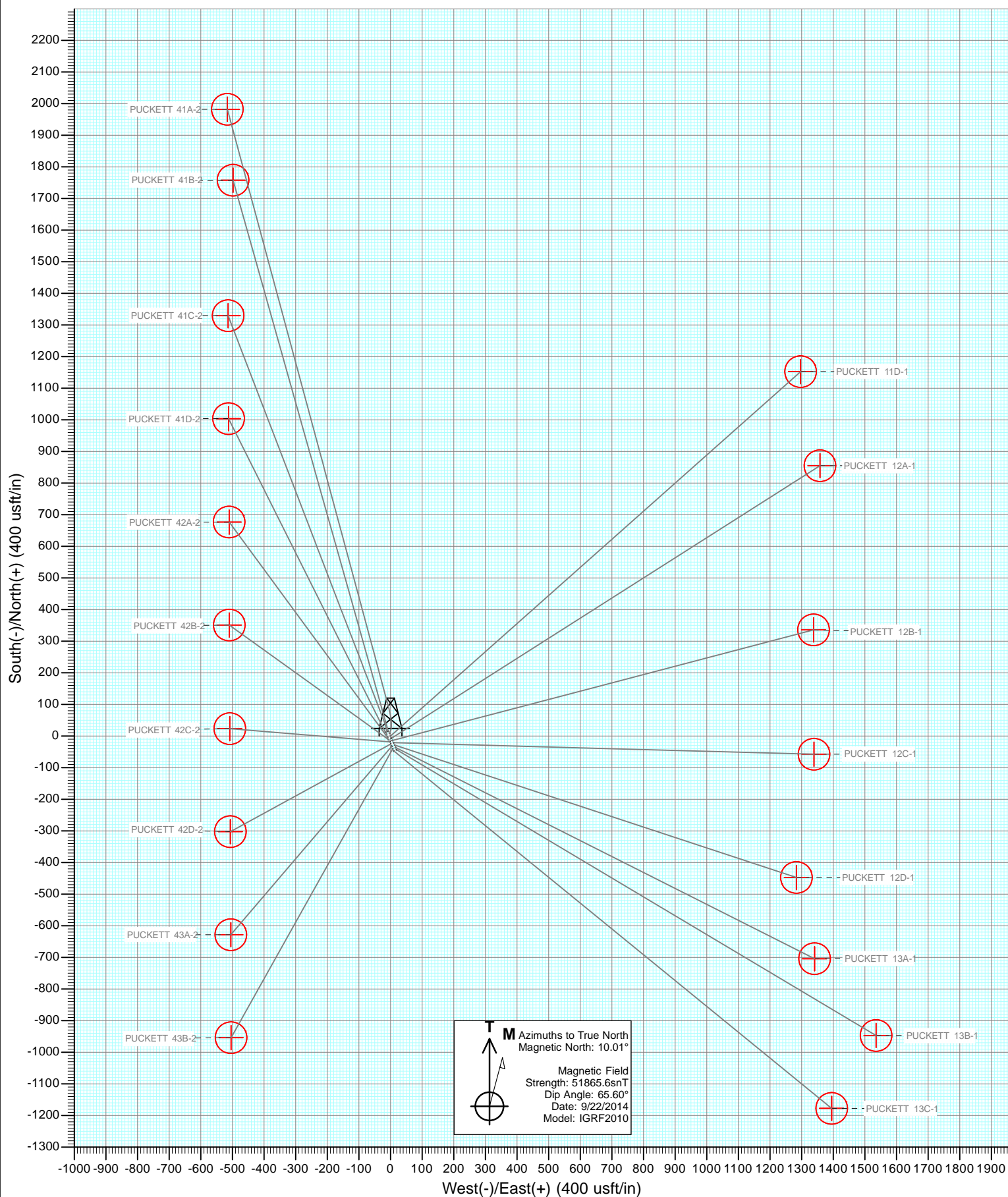
Project: Garfield County, CO
 Site: S2-T7S-R97W (Puckett Pad)
 Well: PUCKETT 42C-2
 Wellbore: DD
 Design: Plan #1



DESIGN TARGET DETAILS						
Name	+N/-S	+E/-W	Northing	Easting	Latitude	Longitude
PUCKETT 42C-2 TGT	41.5	-505.9	609374.66	1243167.46	39.475875	-108.181450
PUCKETT 42C-2 BHL	41.5	-505.9	609374.66	1243167.46	39.475875	-108.181450

Vertical Section at 274.69° (1200 usft/in)





Cathedral Energy Services

Planning Report

Database:	USA EDM 5000 Multi Users DB	Local Co-ordinate Reference:	Well PUCKETT 42C-2
Company:	Caerus Oil & Gas (NAD 27)	TVD Reference:	KB=22' @ 8499.0usft
Project:	Garfield County, CO	MD Reference:	KB=22' @ 8499.0usft
Site:	S2-T7S-R97W (Puckett Pad)	North Reference:	True
Well:	PUCKETT 42C-2	Survey Calculation Method:	Minimum Curvature
Wellbore:	DD		
Design:	Plan #1		

Project	Garfield County, CO		
Map System:	US State Plane 1927 (Exact solution)	System Datum:	Mean Sea Level
Geo Datum:	NAD 1927 (NADCON CONUS)		
Map Zone:	Colorado Central 502		

Site		S2-T7S-R97W (Puckett Pad)			
Site Position:		Northing:	609,295.75 usft	Latitude:	39.475700
From:	Lat/Long	Easting:	1,243,680.53 usft	Longitude:	-108.179625
Position Uncertainty:	0.0 usft	Slot Radius:	13-3/16 "	Grid Convergence:	-1.69 °

Well	PUCKETT 42C-2					
Well Position	+N/-S	0.0 usft	Northing:	609,318.22 usft	Latitude:	39.475761
	+E/-W	0.0 usft	Easting:	1,243,671.87 usft	Longitude:	-108.179658
Position Uncertainty		0.0 usft	Wellhead Elevation:	0.0 usft	Ground Level:	8,477.0 usft

Wellbore	DD				
Magnetics	Model Name	Sample Date	Declination	Dip Angle	Field Strength
			(°)	(°)	(nT)
	IGRF2010	9/19/2014	10.01	65.60	51,866

Design	Plan #1				
Audit Notes:					
Version:	Phase:	PLAN	Tie On Depth:	0.0	
Vertical Section:	Depth From (TVD)	+N/-S	+E/-W	Direction	
	(usft)	(usft)	(usft)	(°)	
	0.0	0.0	0.0	274.69	

Plan Sections										
Measured Depth	Inclination	Azimuth	Vertical Depth	+N/-S	+E/-W	Dogleg Rate	Build Rate	Turn Rate	TFO	Target
(usft)	(°)	(°)	(usft)	(usft)	(usft)	(°/100usft)	(°/100usft)	(°/100usft)	(°)	
0.0	0.00	0.00	0.0	0.0	0.0	0.00	0.00	0.00	0.00	
375.0	0.00	0.00	375.0	0.0	0.0	0.00	0.00	0.00	0.00	
516.7	4.25	274.69	516.6	0.4	-5.2	3.00	3.00	0.00	274.69	
7,221.0	4.25	274.69	7,202.4	41.1	-500.6	0.00	0.00	0.00	0.00	
7,362.7	0.00	0.00	7,344.0	41.5	-505.9	3.00	-3.00	0.00	180.00	PUCKETT 42C-2 TG1
8,897.7	0.00	0.00	8,879.0	41.5	-505.9	0.00	0.00	0.00	0.00	PUCKETT 42C-2 BHL

Cathedral Energy Services

Planning Report

Database:	USA EDM 5000 Multi Users DB	Local Co-ordinate Reference:	Well PUCKETT 42C-2
Company:	Caerus Oil & Gas (NAD 27)	TVD Reference:	KB=22' @ 8499.0usft
Project:	Garfield County, CO	MD Reference:	KB=22' @ 8499.0usft
Site:	S2-T7S-R97W (Puckett Pad)	North Reference:	True
Well:	PUCKETT 42C-2	Survey Calculation Method:	Minimum Curvature
Wellbore:	DD		
Design:	Plan #1		

Planned Survey

Measured Depth (usft)	Inclination (°)	Azimuth (°)	Vertical Depth (usft)	+N/-S (usft)	+E/-W (usft)	Vertical Section (usft)	Dogleg Rate (°/100usft)	Build Rate (°/100u)	Comments / Formations
0.0	0.00	0.00	0.0	0.0	0.0	0.0	0.00	0.00	
100.0	0.00	0.00	100.0	0.0	0.0	0.0	0.00	0.00	
200.0	0.00	0.00	200.0	0.0	0.0	0.0	0.00	0.00	
300.0	0.00	0.00	300.0	0.0	0.0	0.0	0.00	0.00	
375.0	0.00	0.00	375.0	0.0	0.0	0.0	0.00	0.00	KOP @ 375'
400.0	0.75	274.69	400.0	0.0	-0.2	0.2	3.00	3.00	
500.0	3.75	274.69	499.9	0.3	-4.1	4.1	3.00	3.00	
516.7	4.25	274.69	516.6	0.4	-5.2	5.3	3.00	3.00	EOB @ 4.25° INC
600.0	4.25	274.69	599.6	0.9	-11.4	11.4	0.00	0.00	
700.0	4.25	274.69	699.4	1.5	-18.8	18.8	0.00	0.00	
800.0	4.25	274.69	799.1	2.1	-26.2	26.3	0.00	0.00	
900.0	4.25	274.69	898.8	2.8	-33.6	33.7	0.00	0.00	
1,000.0	4.25	274.69	998.5	3.4	-40.9	41.1	0.00	0.00	
1,100.0	4.25	274.69	1,098.3	4.0	-48.3	48.5	0.00	0.00	
1,200.0	4.25	274.69	1,198.0	4.6	-55.7	55.9	0.00	0.00	
1,300.0	4.25	274.69	1,297.7	5.2	-63.1	63.3	0.00	0.00	
1,400.0	4.25	274.69	1,397.4	5.8	-70.5	70.7	0.00	0.00	
1,500.0	4.25	274.69	1,497.2	6.4	-77.9	78.2	0.00	0.00	
1,600.0	4.25	274.69	1,596.9	7.0	-85.3	85.6	0.00	0.00	
1,700.0	4.25	274.69	1,696.6	7.6	-92.7	93.0	0.00	0.00	
1,800.0	4.25	274.69	1,796.3	8.2	-100.1	100.4	0.00	0.00	
1,900.0	4.25	274.69	1,896.1	8.8	-107.4	107.8	0.00	0.00	
2,000.0	4.25	274.69	1,995.8	9.4	-114.8	115.2	0.00	0.00	
2,100.0	4.25	274.69	2,095.5	10.0	-122.2	122.6	0.00	0.00	
2,200.0	4.25	274.69	2,195.2	10.6	-129.6	130.1	0.00	0.00	
2,300.0	4.25	274.69	2,295.0	11.2	-137.0	137.5	0.00	0.00	
2,400.0	4.25	274.69	2,394.7	11.9	-144.4	144.9	0.00	0.00	
2,500.0	4.25	274.69	2,494.4	12.5	-151.8	152.3	0.00	0.00	
2,600.0	4.25	274.69	2,594.1	13.1	-159.2	159.7	0.00	0.00	
2,700.0	4.25	274.69	2,693.9	13.7	-166.6	167.1	0.00	0.00	
2,800.0	4.25	274.69	2,793.6	14.3	-174.0	174.5	0.00	0.00	
2,900.0	4.25	274.69	2,893.3	14.9	-181.3	182.0	0.00	0.00	
3,000.0	4.25	274.69	2,993.0	15.5	-188.7	189.4	0.00	0.00	
3,100.0	4.25	274.69	3,092.8	16.1	-196.1	196.8	0.00	0.00	
3,200.0	4.25	274.69	3,192.5	16.7	-203.5	204.2	0.00	0.00	
3,300.0	4.25	274.69	3,292.2	17.3	-210.9	211.6	0.00	0.00	
3,400.0	4.25	274.69	3,391.9	17.9	-218.3	219.0	0.00	0.00	
3,500.0	4.25	274.69	3,491.7	18.5	-225.7	226.4	0.00	0.00	
3,600.0	4.25	274.69	3,591.4	19.1	-233.1	233.8	0.00	0.00	
3,700.0	4.25	274.69	3,691.1	19.7	-240.5	241.3	0.00	0.00	
3,800.0	4.25	274.69	3,790.8	20.4	-247.8	248.7	0.00	0.00	
3,900.0	4.25	274.69	3,890.6	21.0	-255.2	256.1	0.00	0.00	
4,000.0	4.25	274.69	3,990.3	21.6	-262.6	263.5	0.00	0.00	
4,100.0	4.25	274.69	4,090.0	22.2	-270.0	270.9	0.00	0.00	
4,200.0	4.25	274.69	4,189.7	22.8	-277.4	278.3	0.00	0.00	
4,300.0	4.25	274.69	4,289.5	23.4	-284.8	285.7	0.00	0.00	
4,400.0	4.25	274.69	4,389.2	24.0	-292.2	293.2	0.00	0.00	
4,500.0	4.25	274.69	4,488.9	24.6	-299.6	300.6	0.00	0.00	
4,600.0	4.25	274.69	4,588.6	25.2	-307.0	308.0	0.00	0.00	
4,700.0	4.25	274.69	4,688.4	25.8	-314.3	315.4	0.00	0.00	
4,800.0	4.25	274.69	4,788.1	26.4	-321.7	322.8	0.00	0.00	
4,900.0	4.25	274.69	4,887.8	27.0	-329.1	330.2	0.00	0.00	

Cathedral Energy Services

Planning Report

Database:	USA EDM 5000 Multi Users DB	Local Co-ordinate Reference:	Well PUCKETT 42C-2
Company:	Caerus Oil & Gas (NAD 27)	TVD Reference:	KB=22' @ 8499.0usft
Project:	Garfield County, CO	MD Reference:	KB=22' @ 8499.0usft
Site:	S2-T7S-R97W (Puckett Pad)	North Reference:	True
Well:	PUCKETT 42C-2	Survey Calculation Method:	Minimum Curvature
Wellbore:	DD		
Design:	Plan #1		

Planned Survey									
Measured Depth (usft)	Inclination (°)	Azimuth (°)	Vertical Depth (usft)	+N/-S (usft)	+E/-W (usft)	Vertical Section (usft)	Dogleg Rate (°/100usft)	Build Rate (°/100u)	Comments / Formations
5,000.0	4.25	274.69	4,987.5	27.6	-336.5	337.6	0.00	0.00	
5,100.0	4.25	274.69	5,087.3	28.2	-343.9	345.1	0.00	0.00	
5,200.0	4.25	274.69	5,187.0	28.8	-351.3	352.5	0.00	0.00	
5,300.0	4.25	274.69	5,286.7	29.5	-358.7	359.9	0.00	0.00	
5,400.0	4.25	274.69	5,386.4	30.1	-366.1	367.3	0.00	0.00	
5,500.0	4.25	274.69	5,486.2	30.7	-373.5	374.7	0.00	0.00	
5,600.0	4.25	274.69	5,585.9	31.3	-380.8	382.1	0.00	0.00	
5,700.0	4.25	274.69	5,685.6	31.9	-388.2	389.5	0.00	0.00	
5,800.0	4.25	274.69	5,785.3	32.5	-395.6	397.0	0.00	0.00	
5,900.0	4.25	274.69	5,885.1	33.1	-403.0	404.4	0.00	0.00	
5,909.0	4.25	274.69	5,894.0	33.1	-403.7	405.0	0.00	0.00	OHIOCREEK
6,000.0	4.25	274.69	5,984.8	33.7	-410.4	411.8	0.00	0.00	
6,100.0	4.25	274.69	6,084.5	34.3	-417.8	419.2	0.00	0.00	
6,200.0	4.25	274.69	6,184.2	34.9	-425.2	426.6	0.00	0.00	
6,300.0	4.25	274.69	6,284.0	35.5	-432.6	434.0	0.00	0.00	
6,400.0	4.25	274.69	6,383.7	36.1	-440.0	441.4	0.00	0.00	
6,435.4	4.25	274.69	6,419.0	36.3	-442.6	444.1	0.00	0.00	WILLIAMS FORK
6,500.0	4.25	274.69	6,483.4	36.7	-447.3	448.9	0.00	0.00	
6,600.0	4.25	274.69	6,583.1	37.3	-454.7	456.3	0.00	0.00	
6,700.0	4.25	274.69	6,682.9	37.9	-462.1	463.7	0.00	0.00	
6,800.0	4.25	274.69	6,782.6	38.6	-469.5	471.1	0.00	0.00	
6,900.0	4.25	274.69	6,882.3	39.2	-476.9	478.5	0.00	0.00	
7,000.0	4.25	274.69	6,982.0	39.8	-484.3	485.9	0.00	0.00	
7,100.0	4.25	274.69	7,081.8	40.4	-491.7	493.3	0.00	0.00	
7,200.0	4.25	274.69	7,181.5	41.0	-499.1	500.8	0.00	0.00	
7,221.0	4.25	274.69	7,202.4	41.1	-500.6	502.3	0.00	0.00	Start 3° Drop
7,300.0	1.88	274.69	7,281.3	41.5	-504.8	506.5	3.00	-3.00	
7,362.7	0.00	0.00	7,344.0	41.5	-505.9	507.6	3.00	-3.00	EOD @ 0° INC - TOG
7,400.0	0.00	0.00	7,381.3	41.5	-505.9	507.6	0.00	0.00	
7,500.0	0.00	0.00	7,481.3	41.5	-505.9	507.6	0.00	0.00	
7,600.0	0.00	0.00	7,581.3	41.5	-505.9	507.6	0.00	0.00	
7,700.0	0.00	0.00	7,681.3	41.5	-505.9	507.6	0.00	0.00	
7,800.0	0.00	0.00	7,781.3	41.5	-505.9	507.6	0.00	0.00	
7,900.0	0.00	0.00	7,881.3	41.5	-505.9	507.6	0.00	0.00	
8,000.0	0.00	0.00	7,981.3	41.5	-505.9	507.6	0.00	0.00	
8,100.0	0.00	0.00	8,081.3	41.5	-505.9	507.6	0.00	0.00	
8,200.0	0.00	0.00	8,181.3	41.5	-505.9	507.6	0.00	0.00	
8,300.0	0.00	0.00	8,281.3	41.5	-505.9	507.6	0.00	0.00	
8,332.7	0.00	0.00	8,314.0	41.5	-505.9	507.6	0.00	0.00	CAMEO
8,400.0	0.00	0.00	8,381.3	41.5	-505.9	507.6	0.00	0.00	
8,500.0	0.00	0.00	8,481.3	41.5	-505.9	507.6	0.00	0.00	
8,600.0	0.00	0.00	8,581.3	41.5	-505.9	507.6	0.00	0.00	
8,700.0	0.00	0.00	8,681.3	41.5	-505.9	507.6	0.00	0.00	
8,747.7	0.00	0.00	8,729.0	41.5	-505.9	507.6	0.00	0.00	ROLLINS
8,800.0	0.00	0.00	8,781.3	41.5	-505.9	507.6	0.00	0.00	
8,897.7	0.00	0.00	8,879.0	41.5	-505.9	507.6	0.00	0.00	TD @ 8,897.7' MD

Cathedral Energy Services

Planning Report

Database:	USA EDM 5000 Multi Users DB	Local Co-ordinate Reference:	Well PUCKETT 42C-2
Company:	Caerus Oil & Gas (NAD 27)	TVD Reference:	KB=22' @ 8499.0usft
Project:	Garfield County, CO	MD Reference:	KB=22' @ 8499.0usft
Site:	S2-T7S-R97W (Puckett Pad)	North Reference:	True
Well:	PUCKETT 42C-2	Survey Calculation Method:	Minimum Curvature
Wellbore:	DD		
Design:	Plan #1		

Targets									
Target Name									
- hit/miss target	Dip Angle	Dip Dir.	TVD	+N/-S	+E/-W	Northing	Easting	Latitude	Longitude
- Shape	(°)	(°)	(usft)	(usft)	(usft)	(usft)	(usft)		
PUCKETT 42C-2 BHL	0.00	0.00	8,879.0	41.5	-505.9	609,374.66	1,243,167.46	39.475875	-108.181450
- plan hits target center									
- Circle (radius 50.0)									
PUCKETT 42C-2 TGT	0.00	0.00	7,344.0	41.5	-505.9	609,374.66	1,243,167.46	39.475875	-108.181450
- plan hits target center									
- Point									

Formations						
Measured Depth	Vertical Depth	Name	Lithology	Dip	Dip Direction	
(usft)	(usft)			(°)	(°)	
5,909.0	5,894.0	OHIOCREEK				
6,435.4	6,419.0	WILLIAMS FORK				
7,362.7	7,344.0	TOG				
8,332.7	8,314.0	CAMEO				
8,747.7	8,729.0	ROLLINS				

Plan Annotations					
Measured Depth	Vertical Depth	Local Coordinates			
(usft)	(usft)	+N/-S	+E/-W	Comment	
(usft)	(usft)	(usft)	(usft)		
375.0	375.0	0.0	0.0	KOP @ 375'	
516.7	516.6	0.4	-5.2	EOB @ 4.25° INC	
7,221.0	7,202.4	41.1	-500.6	Start 3° Drop	
7,362.7	7,344.0	41.5	-505.9	EOD @ 0° INC	
8,897.7	8,879.0	41.5	-505.9	TD @ 8,897.7' MD	

Caerus Oil & Gas (NAD 27)

Garfield County, CO

S2-T7S-R97W (Puckett Pad)

PUCKETT 42C-2

DD

Plan #1

Anticollision Report

22 September, 2014

Cathedral Energy Services

Anticollision Report

Company:	Caerus Oil & Gas (NAD 27)	Local Co-ordinate Reference:	Well PUCKETT 42C-2
Project:	Garfield County, CO	TVD Reference:	KB=22' @ 8499.0usft
Reference Site:	S2-T7S-R97W (Puckett Pad)	MD Reference:	KB=22' @ 8499.0usft
Site Error:	0.0usft	North Reference:	True
Reference Well:	PUCKETT 42C-2	Survey Calculation Method:	Minimum Curvature
Well Error:	0.0usft	Output errors are at	2.00 sigma
Reference Wellbore	DD	Database:	USA EDM 5000 Multi Users DB
Reference Design:	Plan #1	Offset TVD Reference:	Offset Datum

Reference	Plan #1		
Filter type:	NO GLOBAL FILTER: Using user defined selection & filtering criteria		
Interpolation Method:	MD Interval 100.0usft	Error Model:	ISCWSA
Depth Range:	Unlimited	Scan Method:	Closest Approach 3D
Results Limited by:	Maximum center-center distance of 200.0usft	Error Surface:	Elliptical Conic
Warning Levels Evaluated at:	2.00 Sigma		

Survey Tool Program	Date	9/22/2014		
From (usft)	To (usft)	Survey (Wellbore)	Tool Name	Description
0.0	8,897.7	Plan #1 (DD)	ISCWSA MWD	MWD - Standard

Cathedral Energy Services

Anticollision Report

Company:	Caerus Oil & Gas (NAD 27)	Local Co-ordinate Reference:	Well PUCKETT 42C-2
Project:	Garfield County, CO	TVD Reference:	KB=22' @ 8499.0usft
Reference Site:	S2-T7S-R97W (Puckett Pad)	MD Reference:	KB=22' @ 8499.0usft
Site Error:	0.0usft	North Reference:	True
Reference Well:	PUCKETT 42C-2	Survey Calculation Method:	Minimum Curvature
Well Error:	0.0usft	Output errors are at	2.00 sigma
Reference Wellbore	DD	Database:	USA EDM 5000 Multi Users DB
Reference Design:	Plan #1	Offset TVD Reference:	Offset Datum

Summary

Site Name Offset Well - Wellbore - Design	Reference	Offset	Distance		Separation	Warning
	Measured Depth (usft)	Measured Depth (usft)	Between Centres (usft)	Between Ellipses (usft)		
S2-T7S-R97W (Puckett Pad)						
PUCKETT 11D-1 - DD - Plan #1	200.0	200.0	18.4	17.7	29.369	CC, ES
PUCKETT 11D-1 - DD - Plan #1	400.0	397.8	27.1	25.5	17.413	SF
PUCKETT 12A-1 - DD - Plan #1	233.8	233.8	12.5	11.7	16.088	CC, ES
PUCKETT 12A-1 - DD - Plan #1	400.0	398.9	17.8	16.3	11.622	SF
PUCKETT 12B-1 - DD - Plan #1	300.0	300.0	9.4	8.3	8.720	CC, ES
PUCKETT 12B-1 - DD - Plan #1	400.0	399.4	12.1	10.6	7.934	SF
PUCKETT 12C-1 - DD - Plan #1	300.0	300.0	12.8	11.7	11.875	CC
PUCKETT 12C-1 - DD - Plan #1	337.4	337.4	12.8	11.6	10.343	ES
PUCKETT 12C-1 - DD - Plan #1	400.0	399.7	13.6	12.0	8.919	SF
PUCKETT 12D-1 - DD - Plan #1	300.0	300.0	18.6	17.5	17.290	CC, ES
PUCKETT 12D-1 - DD - Plan #1	400.0	399.0	21.2	19.7	14.022	SF
PUCKETT 13A-1 - DD - Plan #1	233.4	233.4	26.1	25.3	33.617	CC, ES
PUCKETT 13A-1 - DD - Plan #1	400.0	397.8	31.8	30.3	21.050	SF
PUCKETT 13B-1 - DD - Plan #1	200.0	200.0	33.2	32.6	53.177	CC, ES
PUCKETT 13B-1 - DD - Plan #1	400.0	396.0	43.2	41.7	28.333	SF
PUCKETT 13C-1 - DD - Plan #1	155.6	155.6	32.0	31.6	75.317	CC
PUCKETT 13C-1 - DD - Plan #1	200.0	199.6	32.2	31.5	51.985	ES
PUCKETT 13C-1 - DD - Plan #1	400.0	395.7	44.2	42.6	28.792	SF
PUCKETT 41A-2 - DD - Plan #1	200.0	200.0	26.2	25.6	41.991	CC, ES
PUCKETT 41A-2 - DD - Plan #1	400.0	396.8	36.0	34.5	23.151	SF
PUCKETT 41B-2 - DD - Plan #1	144.4	144.4	33.9	33.5	90.241	CC, ES
PUCKETT 41B-2 - DD - Plan #1	500.0	490.9	62.2	60.2	30.372	SF
PUCKETT 41C-2 - DD - Plan #1	200.0	200.0	24.4	23.8	39.100	CC, ES
PUCKETT 41C-2 - DD - Plan #1	400.0	397.5	31.7	30.2	20.560	SF
PUCKETT 41D-2 - DD - Plan #1	155.6	155.6	32.5	32.0	76.379	CC
PUCKETT 41D-2 - DD - Plan #1	200.0	199.6	32.6	32.0	52.324	ES
PUCKETT 41D-2 - DD - Plan #1	1,500.0	1,482.9	190.7	183.4	26.232	SF
PUCKETT 42A-2 - DD - Plan #1	255.6	255.6	15.9	15.0	18.136	CC
PUCKETT 42A-2 - DD - Plan #1	300.0	299.8	16.0	14.9	14.928	ES
PUCKETT 42A-2 - DD - Plan #1	400.0	398.8	19.8	18.3	12.953	SF
PUCKETT 42B-2 - DD - Plan #1	300.0	300.0	8.3	7.2	7.714	CC, ES
PUCKETT 42B-2 - DD - Plan #1	400.0	399.7	9.5	8.0	6.269	SF
PUCKETT 42D-2 - DD - Plan #1	300.0	300.0	7.6	6.5	7.060	CC
PUCKETT 42D-2 - DD - Plan #1	400.0	399.9	7.9	6.4	5.233	ES, SF
PUCKETT 43A-2 - DD - Plan #1	255.7	255.7	15.5	14.6	17.714	CC
PUCKETT 43A-2 - DD - Plan #1	300.0	299.9	15.6	14.5	14.577	ES
PUCKETT 43A-2 - DD - Plan #1	400.0	399.4	17.7	16.2	11.893	SF
PUCKETT 43B-2 - DD - Plan #1	200.0	200.0	24.1	23.5	38.550	CC, ES
PUCKETT 43B-2 - DD - Plan #1	400.0	398.2	29.7	28.2	19.800	SF

Cathedral Energy Services

Anticollision Report

Company:	Caerus Oil & Gas (NAD 27)	Local Co-ordinate Reference:	Well PUCKETT 42C-2
Project:	Garfield County, CO	TVD Reference:	KB=22' @ 8499.0usft
Reference Site:	S2-T7S-R97W (Puckett Pad)	MD Reference:	KB=22' @ 8499.0usft
Site Error:	0.0usft	North Reference:	True
Reference Well:	PUCKETT 42C-2	Survey Calculation Method:	Minimum Curvature
Well Error:	0.0usft	Output errors are at	2.00 sigma
Reference Wellbore	DD	Database:	USA EDM 5000 Multi Users DB
Reference Design:	Plan #1	Offset TVD Reference:	Offset Datum

Offset Design S2-T7S-R97W (Puckett Pad) - PUCKETT 11D-1 - DD - Plan #1													Offset Site Error:	0.0 usft
Survey Program: 0-ISCSWA MWD													Offset Well Error:	0.0 usft
Reference		Offset		Semi Major Axis			Distance							Warning
Measured Depth (usft)	Vertical Depth (usft)	Measured Depth (usft)	Vertical Depth (usft)	Reference (usft)	Offset (usft)	Highside Toolface (°)	Offset Wellbore Centre +N/-S (usft)	+E/-W (usft)	Between Centres (usft)	Between Ellipses (usft)	Total Uncertainty Axis	Separation Factor		
0.0	0.0	0.0	0.0	0.0	0.0	7.07	18.2	2.3	18.4					
100.0	100.0	100.0	100.0	0.1	0.1	7.07	18.2	2.3	18.4	18.2	0.18	104.673		
200.0	200.0	200.0	200.0	0.3	0.3	7.07	18.2	2.3	18.4	17.7	0.62	29.369	CC, ES	
300.0	300.0	299.2	299.1	0.5	0.5	11.86	19.9	4.2	20.4	19.3	1.07	18.983		
400.0	400.0	397.8	397.5	0.8	0.8	107.19	25.0	9.9	27.1	25.5	1.55	17.413	SF	
500.0	499.9	495.0	493.8	1.0	1.0	120.03	33.3	19.2	40.9	38.8	2.07	19.778		
600.0	599.6	589.7	587.0	1.2	1.4	129.33	44.5	31.9	62.7	60.1	2.58	24.323		
700.0	699.4	682.2	677.1	1.4	1.8	133.81	58.4	47.5	90.2	87.1	3.08	29.239		
800.0	799.1	777.2	769.1	1.7	2.2	136.23	74.2	65.3	120.2	116.6	3.58	33.601		
900.0	898.8	872.5	861.4	1.9	2.7	137.68	90.0	83.1	150.4	146.3	4.06	37.048		
1,000.0	998.5	967.8	953.6	2.2	3.2	138.65	105.8	100.8	180.6	176.1	4.55	39.697		

Cathedral Energy Services

Anticollision Report

Company:	Caerus Oil & Gas (NAD 27)	Local Co-ordinate Reference:	Well PUCKETT 42C-2
Project:	Garfield County, CO	TVD Reference:	KB=22' @ 8499.0usft
Reference Site:	S2-T7S-R97W (Puckett Pad)	MD Reference:	KB=22' @ 8499.0usft
Site Error:	0.0usft	North Reference:	True
Reference Well:	PUCKETT 42C-2	Survey Calculation Method:	Minimum Curvature
Well Error:	0.0usft	Output errors are at	2.00 sigma
Reference Wellbore	DD	Database:	USA EDM 5000 Multi Users DB
Reference Design:	Plan #1	Offset TVD Reference:	Offset Datum

Offset Design S2-T7S-R97W (Puckett Pad) - PUCKETT 12A-1 - DD - Plan #1													Offset Site Error:	0.0 usft
Survey Program: 0-ISWWSA MWD													Offset Well Error:	0.0 usft
Reference		Offset		Semi Major Axis			Distance						Warning	
Measured Depth (usft)	Vertical Depth (usft)	Measured Depth (usft)	Vertical Depth (usft)	Reference (usft)	Offset (usft)	Highside Toolface (°)	Offset Wellbore Centre +N/-S (usft)	+E/-W (usft)	Between Centres (usft)	Between Ellipses (usft)	Total Uncertainty Axis	Separation Factor		
0.0	0.0	0.0	0.0	0.0	0.0	25.41	11.3	5.4	12.5					
100.0	100.0	100.0	100.0	0.1	0.1	25.41	11.3	5.4	12.5	12.3	0.18	71.301		
200.0	200.0	200.0	200.0	0.3	0.3	25.41	11.3	5.4	12.5	11.9	0.62	20.005		
233.8	233.8	233.8	233.8	0.4	0.4	25.41	11.3	5.4	12.5	11.7	0.78	16.088	CC, ES	
300.0	300.0	299.7	299.7	0.5	0.5	26.92	11.6	5.9	13.1	12.0	1.07	12.185		
400.0	400.0	398.9	398.7	0.8	0.8	121.16	14.4	10.3	17.8	16.3	1.53	11.622	SF	
500.0	499.9	496.7	496.0	1.0	1.0	134.45	19.8	18.8	30.3	28.2	2.05	14.765		
600.0	599.6	592.4	590.5	1.2	1.3	142.59	27.7	31.2	51.1	48.6	2.56	20.001		
700.0	699.4	685.7	681.9	1.4	1.7	145.83	37.8	47.1	77.2	74.2	3.04	25.368		
800.0	799.1	780.8	774.4	1.7	2.1	147.33	49.7	65.8	106.4	102.9	3.53	30.156		
900.0	898.8	876.4	867.4	1.9	2.5	148.19	61.7	84.6	135.7	131.7	4.00	33.887		
1,000.0	998.5	972.0	960.3	2.2	3.0	148.75	73.6	103.4	165.0	160.5	4.48	36.795		
1,100.0	1,098.3	1,067.6	1,053.3	2.5	3.4	149.14	85.6	122.1	194.3	189.3	4.97	39.094		

Cathedral Energy Services

Anticollision Report

Company:	Caerus Oil & Gas (NAD 27)	Local Co-ordinate Reference:	Well PUCKETT 42C-2
Project:	Garfield County, CO	TVD Reference:	KB=22' @ 8499.0usft
Reference Site:	S2-T7S-R97W (Puckett Pad)	MD Reference:	KB=22' @ 8499.0usft
Site Error:	0.0usft	North Reference:	True
Reference Well:	PUCKETT 42C-2	Survey Calculation Method:	Minimum Curvature
Well Error:	0.0usft	Output errors are at	2.00 sigma
Reference Wellbore	DD	Database:	USA EDM 5000 Multi Users DB
Reference Design:	Plan #1	Offset TVD Reference:	Offset Datum

Offset Design S2-T7S-R97W (Puckett Pad) - PUCKETT 12B-1 - DD - Plan #1													Offset Site Error:	0.0 usft
Survey Program: 0-ISCSWA MWD													Offset Well Error:	0.0 usft
Reference		Offset		Semi Major Axis			Distance							Warning
Measured Depth (usft)	Vertical Depth (usft)	Measured Depth (usft)	Vertical Depth (usft)	Reference (usft)	Offset (usft)	Highside Toolface (°)	Offset Wellbore Centre +N/-S (usft)	+E/-W (usft)	Between Centres (usft)	Between Ellipses (usft)	Total Uncertainty Axis	Separation Factor		
0.0	0.0	0.0	0.0	0.0	0.0	64.68	4.0	8.5	9.4					
100.0	100.0	100.0	100.0	0.1	0.1	64.68	4.0	8.5	9.4	9.2	0.18	53.438		
200.0	200.0	200.0	200.0	0.3	0.3	64.68	4.0	8.5	9.4	8.7	0.62	14.993		
300.0	300.0	300.0	300.0	0.5	0.5	64.68	4.0	8.5	9.4	8.3	1.07	8.720	CC, ES	
400.0	400.0	399.4	399.4	0.8	0.8	152.61	4.7	11.0	12.1	10.6	1.52	7.934	SF	
500.0	499.9	497.8	497.5	1.0	1.0	159.51	6.6	18.4	23.4	21.4	2.05	11.411		
600.0	599.6	594.2	593.0	1.2	1.2	163.14	9.8	30.3	43.2	40.6	2.54	17.019		
700.0	699.4	688.4	685.7	1.4	1.6	164.22	14.0	46.5	67.9	64.9	3.01	22.529		
800.0	799.1	784.7	780.1	1.7	1.9	164.63	18.9	65.3	94.9	91.4	3.48	27.291		
900.0	898.8	881.0	874.4	1.9	2.3	164.86	23.9	84.0	121.9	118.0	3.93	30.984		
1,000.0	998.5	977.3	968.7	2.2	2.7	165.01	28.8	102.7	148.9	144.5	4.40	33.842		
1,100.0	1,098.3	1,073.5	1,063.0	2.5	3.1	165.11	33.7	121.4	175.9	171.1	4.87	36.110		

Cathedral Energy Services

Anticollision Report

Company:	Caerus Oil & Gas (NAD 27)	Local Co-ordinate Reference:	Well PUCKETT 42C-2
Project:	Garfield County, CO	TVD Reference:	KB=22' @ 8499.0usft
Reference Site:	S2-T7S-R97W (Puckett Pad)	MD Reference:	KB=22' @ 8499.0usft
Site Error:	0.0usft	North Reference:	True
Reference Well:	PUCKETT 42C-2	Survey Calculation Method:	Minimum Curvature
Well Error:	0.0usft	Output errors are at	2.00 sigma
Reference Wellbore	DD	Database:	USA EDM 5000 Multi Users DB
Reference Design:	Plan #1	Offset TVD Reference:	Offset Datum

Offset Design S2-T7S-R97W (Puckett Pad) - PUCKETT 12C-1 - DD - Plan #1												Offset Site Error: 0.0 usft	
Survey Program: 0-ISCSWA MWD												Offset Well Error: 0.0 usft	
Reference		Offset		Semi Major Axis			Distance						Warning
Measured Depth (usft)	Vertical Depth (usft)	Measured Depth (usft)	Vertical Depth (usft)	Reference (usft)	Offset (usft)	Highside Toolface (°)	Offset Wellbore Centre +N/-S (usft)	+E/-W (usft)	Between Centres (usft)	Between Ellipses (usft)	Total Uncertainty Axis	Separation Factor	
0.0	0.0	0.0	0.0	0.0	0.0	103.20	-2.9	12.4	12.8				
100.0	100.0	100.0	100.0	0.1	0.1	103.20	-2.9	12.4	12.8	12.6	0.18	72.770	
200.0	200.0	200.0	200.0	0.3	0.3	103.20	-2.9	12.4	12.8	12.1	0.62	20.418	
300.0	300.0	300.0	300.0	0.5	0.5	103.20	-2.9	12.4	12.8	11.7	1.07	11.875 CC	
337.4	337.4	337.4	337.4	0.6	0.6	-171.55	-2.9	12.4	12.8	11.6	1.24	10.343 ES	
400.0	400.0	399.7	399.7	0.8	0.8	-172.14	-2.9	13.1	13.6	12.0	1.52	8.919 SF	
500.0	499.9	498.3	498.2	1.0	1.0	-175.96	-3.1	18.2	22.6	20.5	2.03	11.100	
600.0	599.6	595.2	594.5	1.2	1.2	-178.50	-3.3	28.1	40.1	37.6	2.51	15.996	
700.0	699.4	690.1	688.3	1.4	1.5	-179.77	-3.7	42.6	62.6	59.6	2.97	21.075	
800.0	799.1	785.3	781.7	1.7	1.8	179.49	-4.2	60.9	89.0	85.6	3.44	25.841	
900.0	898.8	881.6	876.2	1.9	2.2	179.08	-4.8	79.7	115.8	111.9	3.90	29.703	
1,000.0	998.5	978.0	970.7	2.2	2.6	178.83	-5.3	98.6	142.6	138.2	4.36	32.702	
1,100.0	1,098.3	1,074.3	1,065.1	2.5	3.0	178.65	-5.8	117.4	169.3	164.5	4.83	35.079	
1,200.0	1,198.0	1,170.6	1,159.6	2.7	3.4	178.52	-6.3	136.3	196.1	190.8	5.30	37.002	

Cathedral Energy Services

Anticollision Report

Company:	Caerus Oil & Gas (NAD 27)	Local Co-ordinate Reference:	Well PUCKETT 42C-2
Project:	Garfield County, CO	TVD Reference:	KB=22' @ 8499.0usft
Reference Site:	S2-T7S-R97W (Puckett Pad)	MD Reference:	KB=22' @ 8499.0usft
Site Error:	0.0usft	North Reference:	True
Reference Well:	PUCKETT 42C-2	Survey Calculation Method:	Minimum Curvature
Well Error:	0.0usft	Output errors are at	2.00 sigma
Reference Wellbore	DD	Database:	USA EDM 5000 Multi Users DB
Reference Design:	Plan #1	Offset TVD Reference:	Offset Datum

Offset Design S2-T7S-R97W (Puckett Pad) - PUCKETT 12D-1 - DD - Plan #1													Offset Site Error:	0.0 usft
Survey Program: 0-ISCSWA MWD													Offset Well Error:	0.0 usft
Reference		Offset		Semi Major Axis			Distance							Warning
Measured Depth (usft)	Vertical Depth (usft)	Measured Depth (usft)	Vertical Depth (usft)	Reference (usft)	Offset (usft)	Highside Toolface (°)	Offset Wellbore Centre +N/-S (usft)	+E/-W (usft)	Between Centres (usft)	Between Ellipses (usft)	Total Uncertainty Axis	Separation Factor		
0.0	0.0	0.0	0.0	0.0	0.0	123.30	-10.2	15.5	18.6					
100.0	100.0	100.0	100.0	0.1	0.1	123.30	-10.2	15.5	18.6	18.4	0.18	105.955		
200.0	200.0	200.0	200.0	0.3	0.3	123.30	-10.2	15.5	18.6	18.0	0.62	29.728		
300.0	300.0	300.0	300.0	0.5	0.5	123.30	-10.2	15.5	18.6	17.5	1.07	17.290 CC, ES		
400.0	400.0	399.0	398.9	0.8	0.7	-153.39	-11.0	18.0	21.2	19.7	1.51	14.022 SF		
500.0	499.9	496.9	496.6	1.0	1.0	-159.39	-13.4	25.2	32.5	30.4	2.04	15.942		
600.0	599.6	592.8	591.7	1.2	1.2	-163.83	-17.2	36.8	52.1	49.6	2.52	20.698		
700.0	699.4	687.0	684.3	1.4	1.5	-165.89	-22.4	52.6	76.8	73.8	3.00	25.606		
800.0	799.1	783.4	778.9	1.7	1.9	-166.97	-28.3	70.5	103.4	99.9	3.46	29.903		
900.0	898.8	879.7	873.4	1.9	2.3	-167.61	-34.2	88.4	130.0	126.1	3.92	33.187		
1,000.0	998.5	976.1	967.9	2.2	2.7	-168.03	-40.1	106.4	156.6	152.2	4.39	35.710		
1,100.0	1,098.3	1,072.5	1,062.4	2.5	3.1	-168.33	-46.1	124.3	183.3	178.4	4.86	37.698		

Cathedral Energy Services

Anticollision Report

Company:	Caerus Oil & Gas (NAD 27)	Local Co-ordinate Reference:	Well PUCKETT 42C-2
Project:	Garfield County, CO	TVD Reference:	KB=22' @ 8499.0usft
Reference Site:	S2-T7S-R97W (Puckett Pad)	MD Reference:	KB=22' @ 8499.0usft
Site Error:	0.0usft	North Reference:	True
Reference Well:	PUCKETT 42C-2	Survey Calculation Method:	Minimum Curvature
Well Error:	0.0usft	Output errors are at	2.00 sigma
Reference Wellbore	DD	Database:	USA EDM 5000 Multi Users DB
Reference Design:	Plan #1	Offset TVD Reference:	Offset Datum

Offset Design S2-T7S-R97W (Puckett Pad) - PUCKETT 13A-1 - DD - Plan #1													Offset Site Error:	0.0 usft
Survey Program: 0-ISWWSA MWD													Offset Well Error:	0.0 usft
Reference		Offset		Semi Major Axis			Distance							Warning
Measured Depth (usft)	Vertical Depth (usft)	Measured Depth (usft)	Vertical Depth (usft)	Reference (usft)	Offset (usft)	Highside Toolface (°)	Offset Wellbore Centre +N/-S (usft)	+E/-W (usft)	Between Centres (usft)	Between Ellipses (usft)	Total Uncertainty Axis	Separation Factor		
0.0	0.0	0.0	0.0	0.0	0.0	134.35	-18.2	18.6	26.1					
100.0	100.0	100.0	100.0	0.1	0.1	134.35	-18.2	18.6	26.1	25.9	0.18	148.606		
200.0	200.0	200.0	200.0	0.3	0.3	134.35	-18.2	18.6	26.1	25.4	0.62	41.695		
233.4	233.4	233.4	233.4	0.4	0.4	134.35	-18.2	18.6	26.1	25.3	0.78	33.617	CC, ES	
300.0	300.0	299.3	299.3	0.5	0.5	133.93	-18.5	19.2	26.7	25.6	1.06	25.071		
400.0	400.0	397.8	397.6	0.8	0.7	-143.63	-20.8	23.7	31.8	30.3	1.51	21.050	SF	
500.0	499.9	494.9	494.2	1.0	1.0	-149.50	-25.3	32.6	45.1	43.1	2.04	22.116		
600.0	599.6	589.6	587.9	1.2	1.3	-154.42	-31.8	45.5	66.7	64.2	2.53	26.317		
700.0	699.4	682.9	679.2	1.4	1.6	-157.02	-40.2	62.2	93.3	90.3	3.03	30.810		
800.0	799.1	778.8	772.8	1.7	2.0	-158.50	-49.5	80.7	121.5	118.0	3.50	34.766		
900.0	898.8	874.7	866.5	1.9	2.5	-159.43	-58.8	99.2	149.8	145.9	3.97	37.778		
1,000.0	998.5	970.6	960.1	2.2	2.9	-160.06	-68.1	117.7	178.2	173.7	4.45	40.074		

Cathedral Energy Services

Anticollision Report

Company:	Caerus Oil & Gas (NAD 27)	Local Co-ordinate Reference:	Well PUCKETT 42C-2
Project:	Garfield County, CO	TVD Reference:	KB=22' @ 8499.0usft
Reference Site:	S2-T7S-R97W (Puckett Pad)	MD Reference:	KB=22' @ 8499.0usft
Site Error:	0.0usft	North Reference:	True
Reference Well:	PUCKETT 42C-2	Survey Calculation Method:	Minimum Curvature
Well Error:	0.0usft	Output errors are at	2.00 sigma
Reference Wellbore	DD	Database:	USA EDM 5000 Multi Users DB
Reference Design:	Plan #1	Offset TVD Reference:	Offset Datum

Offset Design S2-T7S-R97W (Puckett Pad) - PUCKETT 13B-1 - DD - Plan #1												Offset Site Error:	0.0 usft
Survey Program: 0-ISCSWA MWD												Offset Well Error:	0.0 usft
Reference		Offset		Semi Major Axis		Distance							
Measured Depth (usft)	Vertical Depth (usft)	Measured Depth (usft)	Vertical Depth (usft)	Reference (usft)	Offset (usft)	Highside Toolface (°)	Offset Wellbore Centre +N/-S (usft)	+E/-W (usft)	Between Centres (usft)	Between Ellipses (usft)	Total Uncertainty Axis	Separation Factor	Warning
0.0	0.0	0.0	0.0	0.0	0.0	139.14	-25.1	21.7	33.2				
100.0	100.0	100.0	100.0	0.1	0.1	139.14	-25.1	21.7	33.2	33.1	0.18	189.528	
200.0	200.0	200.0	200.0	0.3	0.3	139.14	-25.1	21.7	33.2	32.6	0.62	53.177 CC, ES	
300.0	300.0	298.3	298.2	0.5	0.5	137.86	-26.4	23.9	35.7	34.6	1.06	33.787	
400.0	400.0	396.0	395.7	0.8	0.8	-139.87	-30.3	30.4	43.2	41.7	1.53	28.333 SF	
500.0	499.9	492.2	491.0	1.0	1.0	-144.95	-36.6	40.9	58.8	56.8	2.06	28.523	
600.0	599.6	585.7	583.1	1.2	1.4	-149.53	-45.0	55.1	82.5	79.9	2.56	32.188	
700.0	699.4	676.8	671.9	1.4	1.8	-152.17	-55.5	72.6	111.1	108.1	3.06	36.380	
800.0	799.1	770.6	762.6	1.7	2.2	-153.79	-67.7	93.1	143.0	139.4	3.55	40.233	
900.0	898.8	865.3	854.1	1.9	2.7	-154.83	-80.1	113.9	174.9	170.9	4.03	43.389	

Cathedral Energy Services

Anticollision Report

Company:	Caerus Oil & Gas (NAD 27)	Local Co-ordinate Reference:	Well PUCKETT 42C-2
Project:	Garfield County, CO	TVD Reference:	KB=22' @ 8499.0usft
Reference Site:	S2-T7S-R97W (Puckett Pad)	MD Reference:	KB=22' @ 8499.0usft
Site Error:	0.0usft	North Reference:	True
Reference Well:	PUCKETT 42C-2	Survey Calculation Method:	Minimum Curvature
Well Error:	0.0usft	Output errors are at	2.00 sigma
Reference Wellbore	DD	Database:	USA EDM 5000 Multi Users DB
Reference Design:	Plan #1	Offset TVD Reference:	Offset Datum

Offset Design S2-T7S-R97W (Puckett Pad) - PUCKETT 13C-1 - DD - Plan #1													Offset Site Error:	0.0 usft
Survey Program: 0-ISWWSA MWD													Offset Well Error:	0.0 usft
Reference		Offset		Semi Major Axis			Distance							Warning
Measured Depth (usft)	Vertical Depth (usft)	Measured Depth (usft)	Vertical Depth (usft)	Reference (usft)	Offset (usft)	Highside Toolface (°)	Offset Wellbore Centre +N/-S (usft)	+E/-W (usft)	Between Centres (usft)	Between Ellipses (usft)	Total Uncertainty Axis	Separation Factor		
0.0	0.0	0.0	0.0	0.0	0.0	155.52	-29.1	13.3	32.0					
100.0	100.0	100.0	100.0	0.1	0.1	155.52	-29.1	13.3	32.0	31.8	0.18	182.622		
155.6	155.6	155.6	155.6	0.2	0.2	155.52	-29.1	13.3	32.0	31.6	0.43	75.317 CC		
200.0	200.0	199.6	199.6	0.3	0.3	155.39	-29.2	13.4	32.2	31.5	0.62	51.985 ES		
300.0	300.0	298.0	297.9	0.5	0.5	152.70	-31.6	16.3	35.7	34.6	1.05	34.035		
400.0	400.0	395.7	395.2	0.8	0.8	-126.68	-37.2	23.1	44.2	42.6	1.53	28.792 SF		
500.0	499.9	491.6	490.2	1.0	1.1	-133.45	-45.7	33.5	60.2	58.2	2.07	29.165		
600.0	599.6	584.9	581.8	1.2	1.4	-139.42	-56.9	47.2	84.2	81.6	2.58	32.689		
700.0	699.4	675.8	670.1	1.4	1.8	-142.87	-70.4	63.8	113.4	110.3	3.09	36.753		
800.0	799.1	770.6	761.7	1.7	2.3	-145.03	-85.9	82.8	145.0	141.4	3.58	40.460		
900.0	898.8	865.4	853.3	1.9	2.8	-146.41	-101.4	101.7	176.7	172.6	4.07	43.385		

Cathedral Energy Services

Anticollision Report

Company:	Caerus Oil & Gas (NAD 27)	Local Co-ordinate Reference:	Well PUCKETT 42C-2
Project:	Garfield County, CO	TVD Reference:	KB=22' @ 8499.0usft
Reference Site:	S2-T7S-R97W (Puckett Pad)	MD Reference:	KB=22' @ 8499.0usft
Site Error:	0.0usft	North Reference:	True
Reference Well:	PUCKETT 42C-2	Survey Calculation Method:	Minimum Curvature
Well Error:	0.0usft	Output errors are at	2.00 sigma
Reference Wellbore	DD	Database:	USA EDM 5000 Multi Users DB
Reference Design:	Plan #1	Offset TVD Reference:	Offset Datum

Offset Design S2-T7S-R97W (Puckett Pad) - PUCKETT 41A-2 - DD - Plan #1													Offset Site Error:	0.0 usft
Survey Program: 0-ISCSWA MWD													Offset Well Error:	0.0 usft
Reference		Offset		Semi Major Axis			Distance							Warning
Measured Depth	Vertical Depth	Measured Depth	Vertical Depth	Reference	Offset	Highside Toolface	Offset Wellbore Centre		Between Centres	Between Ellipses	Total Uncertainty	Separation		
(usft)	(usft)	(usft)	(usft)	(usft)	(usft)	(°)	+N/-S (usft)	+E/-W (usft)	(usft)	(usft)	Axis	Factor		
0.0	0.0	0.0	0.0	0.0	0.0	-1.85	26.2	-0.8	26.2					
100.0	100.0	100.0	100.0	0.1	0.1	-1.85	26.2	-0.8	26.2	26.1	0.18	149.661		
200.0	200.0	200.0	200.0	0.3	0.3	-1.85	26.2	-0.8	26.2	25.6	0.62	41.991	CC, ES	
300.0	300.0	298.7	298.6	0.5	0.5	0.05	28.6	0.0	28.7	27.6	1.07	26.702		
400.0	400.0	396.8	396.4	0.8	0.8	89.68	35.7	2.6	36.0	34.5	1.56	23.151	SF	
500.0	499.9	494.2	493.1	1.0	1.0	95.61	47.3	4.9	48.3	46.3	2.03	23.849		
600.0	599.6	590.7	588.3	1.2	1.4	99.11	62.9	4.7	65.1	62.5	2.51	25.868		
700.0	699.4	685.9	681.5	1.4	1.7	98.87	82.4	2.1	85.4	82.4	3.03	28.190		
800.0	799.1	779.5	772.1	1.7	2.1	96.97	105.4	-2.8	109.3	105.7	3.57	30.600		
900.0	898.8	873.5	862.0	1.9	2.6	94.55	131.9	-9.7	136.4	132.2	4.14	32.974		
1,000.0	998.5	969.4	953.6	2.2	3.2	92.75	159.4	-17.2	164.1	159.4	4.70	34.936		
1,100.0	1,098.3	1,065.4	1,045.2	2.5	3.7	91.47	186.9	-24.6	191.9	186.7	5.26	36.460		

Cathedral Energy Services

Anticollision Report

Company:	Caerus Oil & Gas (NAD 27)	Local Co-ordinate Reference:	Well PUCKETT 42C-2
Project:	Garfield County, CO	TVD Reference:	KB=22' @ 8499.0usft
Reference Site:	S2-T7S-R97W (Puckett Pad)	MD Reference:	KB=22' @ 8499.0usft
Site Error:	0.0usft	North Reference:	True
Reference Well:	PUCKETT 42C-2	Survey Calculation Method:	Minimum Curvature
Well Error:	0.0usft	Output errors are at	2.00 sigma
Reference Wellbore	DD	Database:	USA EDM 5000 Multi Users DB
Reference Design:	Plan #1	Offset TVD Reference:	Offset Datum

Offset Design S2-T7S-R97W (Puckett Pad) - PUCKETT 41B-2 - DD - Plan #1													Offset Site Error:	0.0 usft
Survey Program: 0-ISWWSA MWD													Offset Well Error:	0.0 usft
Reference		Offset		Semi Major Axis			Distance						Warning	
Measured Depth (usft)	Vertical Depth (usft)	Measured Depth (usft)	Vertical Depth (usft)	Reference (usft)	Offset (usft)	Highside Toolface (°)	Offset Wellbore Centre +N/-S (usft)	+E/-W (usft)	Between Centres (usft)	Between Ellipses (usft)	Total Uncertainty Axis	Separation Factor		
0.0	0.0	0.0	0.0	0.0	0.0	-8.15	33.5	-4.8	33.9					
100.0	100.0	100.0	100.0	0.1	0.1	-8.15	33.5	-4.8	33.9	33.7	0.18	193.084		
144.4	144.4	144.4	144.4	0.2	0.2	-8.15	33.5	-4.8	33.9	33.5	0.38	90.241	CC, ES	
200.0	200.0	199.3	199.3	0.3	0.3	-8.24	33.9	-4.9	34.3	33.6	0.62	54.993		
300.0	300.0	297.3	297.2	0.5	0.5	-9.11	38.3	-6.1	38.8	37.8	1.07	36.184		
400.0	400.0	394.7	394.1	0.8	0.8	75.00	47.4	-8.7	48.5	46.9	1.57	30.833		
500.0	499.9	490.9	489.3	1.0	1.1	76.75	61.0	-12.6	62.2	60.2	2.05	30.372	SF	
600.0	599.6	585.7	582.2	1.2	1.5	79.84	79.0	-17.6	80.2	77.7	2.56	31.350		
700.0	699.4	679.5	673.1	1.4	1.9	81.32	101.0	-23.8	103.0	99.9	3.10	33.199		
800.0	799.1	776.4	766.7	1.7	2.4	82.13	125.4	-30.7	127.5	123.8	3.64	35.015		
900.0	898.8	873.4	860.3	1.9	2.9	82.67	149.7	-37.5	152.0	147.8	4.18	36.317		
1,000.0	998.5	970.3	953.9	2.2	3.4	83.07	174.0	-44.4	176.4	171.7	4.74	37.245		

Cathedral Energy Services

Anticollision Report

Company:	Caerus Oil & Gas (NAD 27)	Local Co-ordinate Reference:	Well PUCKETT 42C-2
Project:	Garfield County, CO	TVD Reference:	KB=22' @ 8499.0usft
Reference Site:	S2-T7S-R97W (Puckett Pad)	MD Reference:	KB=22' @ 8499.0usft
Site Error:	0.0usft	North Reference:	True
Reference Well:	PUCKETT 42C-2	Survey Calculation Method:	Minimum Curvature
Well Error:	0.0usft	Output errors are at	2.00 sigma
Reference Wellbore	DD	Database:	USA EDM 5000 Multi Users DB
Reference Design:	Plan #1	Offset TVD Reference:	Offset Datum

Offset Design S2-T7S-R97W (Puckett Pad) - PUCKETT 41C-2 - DD - Plan #1													Offset Site Error: 0.0 usft	
Survey Program: 0-ISCSWA MWD													Offset Well Error: 0.0 usft	
Reference		Offset		Semi Major Axis			Distance							Warning
Measured Depth (usft)	Vertical Depth (usft)	Measured Depth (usft)	Vertical Depth (usft)	Reference (usft)	Offset (usft)	Highside Toolface (°)	Offset Wellbore Centre +N/-S (usft)	+E/-W (usft)	Between Centres (usft)	Between Ellipses (usft)	Total Uncertainty Axis	Separation Factor		
0.0	0.0	0.0	0.0	0.0	0.0	-24.58	22.2	-10.2	24.4					
100.0	100.0	100.0	100.0	0.1	0.1	-24.58	22.2	-10.2	24.4	24.3	0.18	139.358		
200.0	200.0	200.0	200.0	0.3	0.3	-24.58	22.2	-10.2	24.4	23.8	0.62	39.100	CC, ES	
300.0	300.0	299.1	299.1	0.5	0.5	-23.25	23.7	-10.2	25.8	24.7	1.07	23.992		
400.0	400.0	397.5	397.3	0.8	0.8	66.81	30.0	-10.2	31.7	30.2	1.54	20.560	SF	
500.0	499.9	495.2	494.3	1.0	1.0	75.20	41.0	-11.0	41.6	39.6	2.01	20.722		
600.0	599.6	592.0	589.9	1.2	1.3	81.00	55.7	-14.8	55.7	53.2	2.49	22.352		
700.0	699.4	689.0	685.0	1.4	1.7	82.33	73.8	-21.5	73.7	70.7	3.01	24.465		
800.0	799.1	787.2	781.1	1.7	2.1	82.84	92.7	-28.8	92.3	88.8	3.53	26.146		
900.0	898.8	885.5	877.2	1.9	2.5	83.18	111.6	-36.0	111.0	106.9	4.06	27.318		
1,000.0	998.5	983.7	973.4	2.2	2.9	83.43	130.5	-43.3	129.6	125.0	4.60	28.165		
1,100.0	1,098.3	1,082.0	1,069.5	2.5	3.3	83.61	149.4	-50.6	148.2	143.1	5.15	28.801		
1,200.0	1,198.0	1,180.2	1,165.7	2.7	3.8	83.75	168.3	-57.8	166.9	161.2	5.70	29.294		
1,300.0	1,297.7	1,278.5	1,261.8	3.0	4.2	83.86	187.2	-65.1	185.5	179.3	6.25	29.686		

Cathedral Energy Services

Anticollision Report

Company:	Caerus Oil & Gas (NAD 27)	Local Co-ordinate Reference:	Well PUCKETT 42C-2
Project:	Garfield County, CO	TVD Reference:	KB=22' @ 8499.0usft
Reference Site:	S2-T7S-R97W (Puckett Pad)	MD Reference:	KB=22' @ 8499.0usft
Site Error:	0.0usft	North Reference:	True
Reference Well:	PUCKETT 42C-2	Survey Calculation Method:	Minimum Curvature
Well Error:	0.0usft	Output errors are at	2.00 sigma
Reference Wellbore	DD	Database:	USA EDM 5000 Multi Users DB
Reference Design:	Plan #1	Offset TVD Reference:	Offset Datum

Offset Design S2-T7S-R97W (Puckett Pad) - PUCKETT 41D-2 - DD - Plan #1													Offset Site Error: 0.0 usft	
Survey Program: 0-ISCSWA MWD													Offset Well Error: 0.0 usft	
Reference		Offset		Semi Major Axis			Distance							Warning
Measured Depth (usft)	Vertical Depth (usft)	Measured Depth (usft)	Vertical Depth (usft)	Reference (usft)	Offset (usft)	Highside Toolface (°)	Offset Wellbore Centre +N/-S (usft)	+E/-W (usft)	Between Centres (usft)	Between Ellipses (usft)	Total Uncertainty Axis	Separation Factor		
0.0	0.0	0.0	0.0	0.0	0.0	-24.67	29.5	-13.5	32.5					
100.0	100.0	100.0	100.0	0.1	0.1	-24.67	29.5	-13.5	32.5	32.3	0.18	185.181		
155.6	155.6	155.6	155.6	0.2	0.2	-24.67	29.5	-13.5	32.5	32.0	0.43	76.379 CC		
200.0	200.0	199.6	199.6	0.3	0.3	-24.68	29.6	-13.6	32.6	32.0	0.62	52.324 ES		
300.0	300.0	297.7	297.7	0.5	0.5	-24.87	33.0	-15.3	36.5	35.4	1.07	34.027		
400.0	400.0	395.3	394.8	0.8	0.8	60.21	40.9	-19.2	45.4	43.8	1.56	29.039		
500.0	499.9	492.2	490.8	1.0	1.1	62.87	53.0	-25.3	57.5	55.4	2.05	28.110		
600.0	599.6	591.3	588.6	1.2	1.4	67.16	67.1	-32.3	70.3	67.8	2.52	27.863		
700.0	699.4	690.4	686.4	1.4	1.8	70.21	81.2	-39.4	83.3	80.3	3.02	27.622		
800.0	799.1	789.4	784.2	1.7	2.1	72.43	95.3	-46.5	96.5	93.0	3.53	27.368		
900.0	898.8	888.5	882.0	1.9	2.5	74.12	109.4	-53.5	109.8	105.8	4.05	27.134		
1,000.0	998.5	987.6	979.8	2.2	2.8	75.44	123.5	-60.6	123.2	118.6	4.58	26.927		
1,100.0	1,098.3	1,086.6	1,077.6	2.5	3.2	76.50	137.7	-67.6	136.7	131.5	5.11	26.747		
1,200.0	1,198.0	1,185.7	1,175.4	2.7	3.5	77.37	151.8	-74.7	150.1	144.5	5.65	26.590		
1,300.0	1,297.7	1,284.7	1,273.2	3.0	3.9	78.10	165.9	-81.7	163.6	157.4	6.19	26.454		
1,400.0	1,397.4	1,383.8	1,371.0	3.2	4.3	78.71	180.0	-88.8	177.2	170.4	6.73	26.335		
1,500.0	1,497.2	1,482.9	1,468.8	3.5	4.6	79.24	194.1	-95.9	190.7	183.4	7.27	26.232 SF		

Cathedral Energy Services

Anticollision Report

Company:	Caerus Oil & Gas (NAD 27)	Local Co-ordinate Reference:	Well PUCKETT 42C-2
Project:	Garfield County, CO	TVD Reference:	KB=22' @ 8499.0usft
Reference Site:	S2-T7S-R97W (Puckett Pad)	MD Reference:	KB=22' @ 8499.0usft
Site Error:	0.0usft	North Reference:	True
Reference Well:	PUCKETT 42C-2	Survey Calculation Method:	Minimum Curvature
Well Error:	0.0usft	Output errors are at	2.00 sigma
Reference Wellbore	DD	Database:	USA EDM 5000 Multi Users DB
Reference Design:	Plan #1	Offset TVD Reference:	Offset Datum

Offset Design S2-T7S-R97W (Puckett Pad) - PUCKETT 42A-2 - DD - Plan #1													Offset Site Error: 0.0 usft	
Survey Program: 0-ISCSWA MWD													Offset Well Error: 0.0 usft	
Reference		Offset		Semi Major Axis			Distance							Warning
Measured Depth (usft)	Vertical Depth (usft)	Measured Depth (usft)	Vertical Depth (usft)	Reference (usft)	Offset (usft)	Highside Toolface (°)	Offset Wellbore Centre +N/-S (usft)	+E/-W (usft)	Between Centres (usft)	Between Ellipses (usft)	Total Uncertainty Axis	Separation Factor		
0.0	0.0	0.0	0.0	0.0	0.0	-26.42	14.2	-7.1	15.9					
100.0	100.0	100.0	100.0	0.1	0.1	-26.42	14.2	-7.1	15.9	15.7	0.18	90.473		
200.0	200.0	200.0	200.0	0.3	0.3	-26.42	14.2	-7.1	15.9	15.2	0.62	25.384		
255.6	255.6	255.6	255.6	0.4	0.4	-26.42	14.2	-7.1	15.9	15.0	0.87	18.136 CC		
300.0	300.0	299.8	299.8	0.5	0.5	-26.52	14.3	-7.2	16.0	14.9	1.07	14.928 ES		
400.0	400.0	398.8	398.7	0.8	0.8	57.25	17.4	-9.4	19.8	18.3	1.53	12.953 SF		
500.0	499.9	497.4	496.9	1.0	1.0	61.31	24.6	-14.7	26.7	24.7	1.99	13.388		
600.0	599.6	596.8	595.5	1.2	1.3	67.44	34.4	-21.9	35.3	32.9	2.47	14.290		
700.0	699.4	696.4	694.4	1.4	1.6	71.23	44.2	-29.2	44.2	41.3	2.96	14.930		
800.0	799.1	795.9	793.2	1.7	1.9	73.75	54.1	-36.4	53.2	49.8	3.47	15.353		
900.0	898.8	895.5	892.0	1.9	2.2	75.54	63.9	-43.6	62.3	58.3	3.98	15.647		
1,000.0	998.5	995.1	990.8	2.2	2.5	76.87	73.7	-50.9	71.5	67.0	4.51	15.860		
1,100.0	1,098.3	1,094.6	1,089.6	2.5	2.8	77.90	83.5	-58.1	80.6	75.6	5.03	16.021		
1,200.0	1,198.0	1,194.2	1,188.5	2.7	3.1	78.72	93.4	-65.3	89.8	84.3	5.56	16.146		
1,300.0	1,297.7	1,293.8	1,287.3	3.0	3.4	79.38	103.2	-72.6	99.0	92.9	6.10	16.245		
1,400.0	1,397.4	1,393.3	1,386.1	3.2	3.7	79.94	113.0	-79.8	108.2	101.6	6.63	16.326		
1,500.0	1,497.2	1,492.9	1,484.9	3.5	4.0	80.40	122.9	-87.0	117.5	110.3	7.17	16.394		
1,600.0	1,596.9	1,592.5	1,583.7	3.8	4.4	80.80	132.7	-94.3	126.7	119.0	7.70	16.451		
1,700.0	1,696.6	1,692.1	1,682.5	4.0	4.7	81.15	142.5	-101.5	135.9	127.7	8.24	16.499		
1,800.0	1,796.3	1,791.6	1,781.4	4.3	5.0	81.45	152.4	-108.7	145.2	136.4	8.78	16.542		
1,900.0	1,896.1	1,891.2	1,880.2	4.5	5.3	81.71	162.2	-116.0	154.4	145.1	9.31	16.579		
2,000.0	1,995.8	1,990.8	1,979.0	4.8	5.6	81.95	172.0	-123.2	163.7	153.8	9.85	16.612		
2,100.0	2,095.5	2,090.3	2,077.8	5.1	5.9	82.16	181.8	-130.4	172.9	162.5	10.39	16.641		
2,200.0	2,195.2	2,189.9	2,176.6	5.3	6.2	82.35	191.7	-137.7	182.2	171.2	10.93	16.668		
2,300.0	2,295.0	2,289.5	2,275.5	5.6	6.6	82.52	201.5	-144.9	191.4	179.9	11.47	16.692		

Cathedral Energy Services

Anticollision Report

Company:	Caerus Oil & Gas (NAD 27)	Local Co-ordinate Reference:	Well PUCKETT 42C-2
Project:	Garfield County, CO	TVD Reference:	KB=22' @ 8499.0usft
Reference Site:	S2-T7S-R97W (Puckett Pad)	MD Reference:	KB=22' @ 8499.0usft
Site Error:	0.0usft	North Reference:	True
Reference Well:	PUCKETT 42C-2	Survey Calculation Method:	Minimum Curvature
Well Error:	0.0usft	Output errors are at	2.00 sigma
Reference Wellbore	DD	Database:	USA EDM 5000 Multi Users DB
Reference Design:	Plan #1	Offset TVD Reference:	Offset Datum

Offset Design S2-T7S-R97W (Puckett Pad) - PUCKETT 42B-2 - DD - Plan #1													Offset Site Error:	0.0 usft
Survey Program: 0-ISCSWA MWD													Offset Well Error:	0.0 usft
Reference		Offset		Semi Major Axis		Highside Toolface (°)	Distance		Total Uncertainty Axis	Separation Factor	Warning			
Measured Depth (usft)	Vertical Depth (usft)	Measured Depth (usft)	Vertical Depth (usft)	Reference (usft)	Offset (usft)		Offset Wellbore Centre +N/-S (usft)	+E/-W (usft)						
0.0	0.0	0.0	0.0	0.0	0.0	-28.48	7.3	-4.0	8.3					
100.0	100.0	100.0	100.0	0.1	0.1	-28.48	7.3	-4.0	8.3	8.1	0.18	47.272		
200.0	200.0	200.0	200.0	0.3	0.3	-28.48	7.3	-4.0	8.3	7.7	0.62	13.263		
300.0	300.0	300.0	300.0	0.5	0.5	-28.48	7.3	-4.0	8.3	7.2	1.07	7.714 CC, ES		
400.0	400.0	399.7	399.7	0.8	0.8	53.81	8.1	-5.1	9.5	8.0	1.52	6.269 SF		
500.0	499.9	499.1	498.8	1.0	1.0	56.50	11.9	-10.4	13.2	11.2	1.98	6.677		
600.0	599.6	599.0	598.3	1.2	1.2	63.84	17.2	-17.7	17.5	15.0	2.44	7.155		
700.0	699.4	698.9	697.8	1.4	1.5	68.46	22.4	-25.0	21.9	18.9	2.92	7.472		
800.0	799.1	798.7	797.3	1.7	1.8	71.52	27.7	-32.3	26.3	22.9	3.42	7.689		
900.0	898.8	898.6	896.8	1.9	2.0	73.69	32.9	-39.6	30.9	26.9	3.93	7.845		
1,000.0	998.5	998.5	996.3	2.2	2.3	75.30	38.2	-46.9	35.4	31.0	4.45	7.961		
1,100.0	1,098.3	1,098.4	1,095.7	2.5	2.6	76.55	43.5	-54.3	40.0	35.0	4.97	8.050		
1,200.0	1,198.0	1,198.3	1,195.2	2.7	2.8	77.53	48.7	-61.6	44.6	39.1	5.49	8.121		
1,300.0	1,297.7	1,298.2	1,294.7	3.0	3.1	78.34	54.0	-68.9	49.2	43.2	6.02	8.178		
1,400.0	1,397.4	1,398.1	1,394.2	3.2	3.4	79.00	59.2	-76.2	53.8	47.3	6.55	8.226		
1,500.0	1,497.2	1,498.0	1,493.7	3.5	3.7	79.56	64.5	-83.5	58.5	51.4	7.07	8.266		
1,600.0	1,596.9	1,597.9	1,593.2	3.8	4.0	80.04	69.7	-90.8	63.1	55.5	7.60	8.300		
1,700.0	1,696.6	1,697.8	1,692.7	4.0	4.2	80.45	75.0	-98.1	67.7	59.6	8.13	8.329		
1,800.0	1,796.3	1,797.7	1,792.1	4.3	4.5	80.81	80.3	-105.4	72.4	63.7	8.66	8.355		
1,900.0	1,896.1	1,897.6	1,891.6	4.5	4.8	81.13	85.5	-112.8	77.0	67.8	9.19	8.377		
2,000.0	1,995.8	1,997.4	1,991.1	4.8	5.1	81.41	90.8	-120.1	81.6	71.9	9.72	8.397		
2,100.0	2,095.5	2,097.3	2,090.6	5.1	5.3	81.66	96.0	-127.4	86.3	76.0	10.25	8.415		
2,200.0	2,195.2	2,197.2	2,190.1	5.3	5.6	81.88	101.3	-134.7	90.9	80.1	10.78	8.431		
2,300.0	2,295.0	2,297.1	2,289.6	5.6	5.9	82.08	106.5	-142.0	95.6	84.3	11.32	8.446		
2,400.0	2,394.7	2,397.0	2,389.0	5.9	6.2	82.27	111.8	-149.3	100.2	88.4	11.85	8.459		
2,500.0	2,494.4	2,496.9	2,488.5	6.1	6.4	82.43	117.1	-156.6	104.9	92.5	12.38	8.472		
2,600.0	2,594.1	2,596.8	2,588.0	6.4	6.7	82.59	122.3	-163.9	109.5	96.6	12.91	8.483		
2,700.0	2,693.9	2,696.7	2,687.5	6.7	7.0	82.73	127.6	-171.3	114.2	100.7	13.44	8.493		
2,800.0	2,793.6	2,796.6	2,787.0	6.9	7.3	82.86	132.8	-178.6	118.8	104.8	13.97	8.503		
2,900.0	2,893.3	2,896.5	2,886.5	7.2	7.6	82.98	138.1	-185.9	123.5	109.0	14.51	8.512		
3,000.0	2,993.0	2,996.4	2,986.0	7.4	7.8	83.09	143.3	-193.2	128.1	113.1	15.04	8.520		
3,100.0	3,092.8	3,096.3	3,085.4	7.7	8.1	83.19	148.6	-200.5	132.8	117.2	15.57	8.528		
3,200.0	3,192.5	3,196.1	3,184.9	8.0	8.4	83.29	153.9	-207.8	137.4	121.3	16.10	8.535		
3,300.0	3,292.2	3,296.0	3,284.4	8.2	8.7	83.38	159.1	-215.1	142.1	125.4	16.63	8.542		
3,400.0	3,391.9	3,395.9	3,383.9	8.5	9.0	83.46	164.4	-222.4	146.7	129.6	17.16	8.549		
3,500.0	3,491.7	3,495.8	3,483.4	8.8	9.2	83.54	169.6	-229.8	151.4	133.7	17.69	8.555		
3,600.0	3,591.4	3,595.7	3,582.9	9.0	9.5	83.62	174.9	-237.1	156.0	137.8	18.23	8.561		
3,700.0	3,691.1	3,695.6	3,682.3	9.3	9.8	83.69	180.1	-244.4	160.7	141.9	18.76	8.567		
3,800.0	3,790.8	3,795.5	3,781.8	9.6	10.1	83.76	185.4	-251.7	165.3	146.1	19.29	8.572		
3,900.0	3,890.6	3,895.4	3,881.3	9.8	10.3	83.82	190.7	-259.0	170.0	150.2	19.82	8.577		
4,000.0	3,990.3	3,995.3	3,980.8	10.1	10.6	83.88	195.9	-266.3	174.6	154.3	20.35	8.582		
4,100.0	4,090.0	4,095.2	4,080.3	10.3	10.9	83.93	201.2	-273.6	179.3	158.4	20.88	8.587		
4,200.0	4,189.7	4,195.1	4,179.8	10.6	11.2	83.99	206.4	-280.9	184.0	162.5	21.41	8.591		
4,300.0	4,289.5	4,295.0	4,279.3	10.9	11.5	84.04	211.7	-288.3	188.6	166.7	21.94	8.595		
4,400.0	4,389.2	4,394.8	4,378.7	11.1	11.7	84.09	216.9	-295.6	193.3	170.8	22.47	8.599		
4,500.0	4,488.9	4,494.7	4,478.2	11.4	12.0	84.13	222.2	-302.9	197.9	174.9	23.00	8.603		

CC - Min centre to center distance or convergent point, SF - min separation factor, ES - min ellipse separation

Cathedral Energy Services

Anticollision Report

Company:	Caerus Oil & Gas (NAD 27)	Local Co-ordinate Reference:	Well PUCKETT 42C-2
Project:	Garfield County, CO	TVD Reference:	KB=22' @ 8499.0usft
Reference Site:	S2-T7S-R97W (Puckett Pad)	MD Reference:	KB=22' @ 8499.0usft
Site Error:	0.0usft	North Reference:	True
Reference Well:	PUCKETT 42C-2	Survey Calculation Method:	Minimum Curvature
Well Error:	0.0usft	Output errors are at	2.00 sigma
Reference Wellbore	DD	Database:	USA EDM 5000 Multi Users DB
Reference Design:	Plan #1	Offset TVD Reference:	Offset Datum

Offset Design S2-T7S-R97W (Puckett Pad) - PUCKETT 42D-2 - DD - Plan #1													Offset Site Error: 0.0 usft	
Survey Program: 0-ISCWSA MWD													Offset Well Error: 0.0 usft	
Reference		Offset		Semi Major Axis			Distance							Warning
Measured Depth (usft)	Vertical Depth (usft)	Measured Depth (usft)	Vertical Depth (usft)	Reference (usft)	Offset (usft)	Highside Toolface (°)	Offset Wellbore Centre +N/-S (usft)	+E/-W (usft)	Between Centres (usft)	Between Ellipses (usft)	Total Uncertainty Axis	Separation Factor		
0.0	0.0	0.0	0.0	0.0	0.0	155.83	-6.9	3.1	7.6					
100.0	100.0	100.0	100.0	0.1	0.1	155.83	-6.9	3.1	7.6	7.4	0.18	43.265		
200.0	200.0	200.0	200.0	0.3	0.3	155.83	-6.9	3.1	7.6	7.0	0.62	12.139		
300.0	300.0	300.0	300.0	0.5	0.5	155.83	-6.9	3.1	7.6	6.5	1.07	7.060 CC		
334.9	334.9	334.9	334.9	0.6	0.6	-119.19	-6.9	3.1	7.6	6.4	1.23	6.207		
400.0	400.0	399.9	399.9	0.8	0.7	-109.20	-7.6	1.8	7.9	6.4	1.51	5.233 ES, SF		
500.0	499.9	499.7	499.5	1.0	1.0	-95.66	-10.7	-3.9	11.1	9.1	1.94	5.720		
600.0	599.6	599.6	599.0	1.2	1.2	-95.12	-14.8	-11.2	15.7	13.3	2.40	6.536		
700.0	699.4	699.5	698.6	1.4	1.4	-95.04	-18.8	-18.6	20.3	17.4	2.89	7.032		
800.0	799.1	799.4	798.1	1.7	1.7	-94.99	-22.8	-26.0	25.0	21.6	3.40	7.355		
900.0	898.8	899.3	897.6	1.9	2.0	-94.95	-26.8	-33.3	29.6	25.7	3.91	7.578		
1,000.0	998.5	999.2	997.2	2.2	2.2	-94.93	-30.9	-40.7	34.2	29.8	4.42	7.740		
1,100.0	1,098.3	1,099.1	1,096.7	2.5	2.5	-94.91	-34.9	-48.1	38.9	33.9	4.94	7.863		
1,200.0	1,198.0	1,199.0	1,196.3	2.7	2.8	-94.90	-38.9	-55.4	43.5	38.0	5.47	7.958		
1,300.0	1,297.7	1,298.9	1,295.8	3.0	3.1	-94.88	-42.9	-62.8	48.2	42.2	5.99	8.034		
1,400.0	1,397.4	1,398.8	1,395.3	3.2	3.3	-94.87	-47.0	-70.2	52.8	46.3	6.52	8.096		
1,500.0	1,497.2	1,498.6	1,494.9	3.5	3.6	-94.87	-51.0	-77.5	57.4	50.4	7.05	8.148		
1,600.0	1,596.9	1,598.5	1,594.4	3.8	3.9	-94.86	-55.0	-84.9	62.1	54.5	7.58	8.192		
1,700.0	1,696.6	1,698.4	1,693.9	4.0	4.2	-94.85	-59.0	-92.3	66.7	58.6	8.10	8.229		
1,800.0	1,796.3	1,798.3	1,793.5	4.3	4.4	-94.85	-63.1	-99.6	71.3	62.7	8.63	8.261		
1,900.0	1,896.1	1,898.2	1,893.0	4.5	4.7	-94.84	-67.1	-107.0	76.0	66.8	9.16	8.290		
2,000.0	1,995.8	1,998.1	1,992.6	4.8	5.0	-94.84	-71.1	-114.4	80.6	70.9	9.69	8.315		
2,100.0	2,095.5	2,098.0	2,092.1	5.1	5.3	-94.84	-75.1	-121.7	85.2	75.0	10.22	8.337		
2,200.0	2,195.2	2,197.9	2,191.6	5.3	5.5	-94.83	-79.2	-129.1	89.9	79.1	10.76	8.356		
2,300.0	2,295.0	2,297.8	2,291.2	5.6	5.8	-94.83	-83.2	-136.5	94.5	83.2	11.29	8.374		
2,400.0	2,394.7	2,397.7	2,390.7	5.9	6.1	-94.83	-87.2	-143.8	99.2	87.3	11.82	8.390		
2,500.0	2,494.4	2,497.6	2,490.3	6.1	6.4	-94.82	-91.2	-151.2	103.8	91.4	12.35	8.405		
2,600.0	2,594.1	2,597.5	2,589.8	6.4	6.6	-94.82	-95.3	-158.6	108.4	95.5	12.88	8.419		
2,700.0	2,693.9	2,697.4	2,689.3	6.7	6.9	-94.82	-99.3	-166.0	113.1	99.6	13.41	8.431		
2,800.0	2,793.6	2,797.2	2,788.9	6.9	7.2	-94.82	-103.3	-173.3	117.7	103.8	13.94	8.442		
2,900.0	2,893.3	2,897.1	2,888.4	7.2	7.5	-94.82	-107.3	-180.7	122.3	107.9	14.47	8.453		
3,000.0	2,993.0	2,997.0	2,988.0	7.4	7.7	-94.81	-111.4	-188.1	127.0	112.0	15.00	8.463		
3,100.0	3,092.8	3,096.9	3,087.5	7.7	8.0	-94.81	-115.4	-195.4	131.6	116.1	15.53	8.472		
3,200.0	3,192.5	3,196.8	3,187.0	8.0	8.3	-94.81	-119.4	-202.8	136.2	120.2	16.06	8.481		
3,300.0	3,292.2	3,296.7	3,286.6	8.2	8.6	-94.81	-123.4	-210.2	140.9	124.3	16.60	8.489		
3,400.0	3,391.9	3,396.6	3,386.1	8.5	8.8	-94.81	-127.5	-217.5	145.5	128.4	17.13	8.496		
3,500.0	3,491.7	3,496.5	3,485.6	8.8	9.1	-94.81	-131.5	-224.9	150.1	132.5	17.66	8.504		
3,600.0	3,591.4	3,596.4	3,585.2	9.0	9.4	-94.81	-135.5	-232.3	154.8	136.6	18.19	8.510		
3,700.0	3,691.1	3,696.3	3,684.7	9.3	9.7	-94.81	-139.5	-239.6	159.4	140.7	18.72	8.517		
3,800.0	3,790.8	3,796.2	3,784.3	9.6	10.0	-94.81	-143.6	-247.0	164.1	144.8	19.25	8.523		
3,900.0	3,890.6	3,896.1	3,883.8	9.8	10.2	-94.80	-147.6	-254.4	168.7	148.9	19.78	8.529		
4,000.0	3,990.3	3,996.0	3,983.3	10.1	10.5	-94.80	-151.6	-261.7	173.3	153.0	20.31	8.534		
4,100.0	4,090.0	4,095.8	4,082.9	10.3	10.8	-94.80	-155.6	-269.1	178.0	157.1	20.84	8.540		
4,200.0	4,189.7	4,195.7	4,182.4	10.6	11.1	-94.80	-159.7	-276.5	182.6	161.2	21.37	8.545		
4,300.0	4,289.5	4,295.6	4,282.0	10.9	11.3	-94.80	-163.7	-283.8	187.2	165.3	21.90	8.550		
4,400.0	4,389.2	4,395.5	4,381.5	11.1	11.6	-94.80	-167.7	-291.2	191.9	169.4	22.43	8.554		
4,500.0	4,488.9	4,495.4	4,481.0	11.4	11.9	-94.80	-171.8	-298.6	196.5	173.5	22.96	8.559		

CC - Min centre to center distance or convergent point, SF - min separation factor, ES - min ellipse separation

Cathedral Energy Services

Anticollision Report

Company:	Caerus Oil & Gas (NAD 27)	Local Co-ordinate Reference:	Well PUCKETT 42C-2
Project:	Garfield County, CO	TVD Reference:	KB=22' @ 8499.0usft
Reference Site:	S2-T7S-R97W (Puckett Pad)	MD Reference:	KB=22' @ 8499.0usft
Site Error:	0.0usft	North Reference:	True
Reference Well:	PUCKETT 42C-2	Survey Calculation Method:	Minimum Curvature
Well Error:	0.0usft	Output errors are at	2.00 sigma
Reference Wellbore	DD	Database:	USA EDM 5000 Multi Users DB
Reference Design:	Plan #1	Offset TVD Reference:	Offset Datum

Offset Design S2-T7S-R97W (Puckett Pad) - PUCKETT 43A-2 - DD - Plan #1													Offset Site Error: 0.0 usft	
Survey Program: 0-ISCSWA MWD													Offset Well Error: 0.0 usft	
Reference		Offset		Semi Major Axis			Distance							Warning
Measured Depth (usft)	Vertical Depth (usft)	Measured Depth (usft)	Vertical Depth (usft)	Reference (usft)	Offset (usft)	Highside Toolface (°)	Offset Wellbore Centre +N/-S (usft)	+E/-W (usft)	Between Centres (usft)	Between Ellipses (usft)	Total Uncertainty Axis	Separation Factor		
0.0	0.0	0.0	0.0	0.0	0.0	156.39	-14.2	6.2	15.5					
100.0	100.0	100.0	100.0	0.1	0.1	156.39	-14.2	6.2	15.5	15.3	0.18	88.429		
200.0	200.0	200.0	200.0	0.3	0.3	156.39	-14.2	6.2	15.5	14.9	0.62	24.811		
255.7	255.7	255.7	255.7	0.4	0.4	156.39	-14.2	6.2	15.5	14.6	0.88	17.714 CC		
300.0	300.0	299.9	299.9	0.5	0.5	156.92	-14.3	6.1	15.6	14.5	1.07	14.577 ES		
400.0	400.0	399.4	399.3	0.8	0.7	-106.88	-17.3	3.6	17.7	16.2	1.49	11.893 SF		
500.0	499.9	498.4	497.9	1.0	1.0	-98.61	-24.1	-2.3	24.6	22.7	1.95	12.624		
600.0	599.6	598.0	596.8	1.2	1.2	-97.33	-32.7	-9.6	33.8	31.4	2.43	13.929		
700.0	699.4	697.6	695.8	1.4	1.5	-96.72	-41.4	-17.0	43.1	40.2	2.93	14.706		
800.0	799.1	797.1	794.7	1.7	1.8	-96.33	-50.0	-24.3	52.3	48.9	3.44	15.201		
900.0	898.8	896.7	893.6	1.9	2.1	-96.05	-58.6	-31.7	61.6	57.6	3.96	15.537		
1,000.0	998.5	996.3	992.5	2.2	2.4	-95.85	-67.2	-39.1	70.8	66.4	4.49	15.777		
1,100.0	1,098.3	1,095.8	1,091.5	2.5	2.7	-95.69	-75.8	-46.4	80.1	75.1	5.02	15.957		
1,200.0	1,198.0	1,195.4	1,190.4	2.7	3.0	-95.57	-84.4	-53.8	89.4	83.8	5.55	16.096		
1,300.0	1,297.7	1,295.0	1,289.3	3.0	3.3	-95.47	-93.1	-61.1	98.6	92.5	6.09	16.207		
1,400.0	1,397.4	1,394.6	1,388.2	3.2	3.7	-95.38	-101.7	-68.5	107.9	101.3	6.62	16.296		
1,500.0	1,497.2	1,494.1	1,487.2	3.5	4.0	-95.31	-110.3	-75.9	117.1	110.0	7.16	16.371		
1,600.0	1,596.9	1,593.7	1,586.1	3.8	4.3	-95.25	-118.9	-83.2	126.4	118.7	7.69	16.433		
1,700.0	1,696.6	1,693.3	1,685.0	4.0	4.6	-95.20	-127.5	-90.6	135.6	127.4	8.23	16.487		
1,800.0	1,796.3	1,792.8	1,783.9	4.3	4.9	-95.16	-136.1	-97.9	144.9	136.1	8.76	16.533		
1,900.0	1,896.1	1,892.4	1,882.8	4.5	5.2	-95.12	-144.8	-105.3	154.2	144.9	9.30	16.574		
2,000.0	1,995.8	1,992.0	1,981.8	4.8	5.5	-95.08	-153.4	-112.7	163.4	153.6	9.84	16.610		
2,100.0	2,095.5	2,091.6	2,080.7	5.1	5.8	-95.05	-162.0	-120.0	172.7	162.3	10.38	16.642		
2,200.0	2,195.2	2,191.1	2,179.6	5.3	6.1	-95.02	-170.6	-127.4	181.9	171.0	10.91	16.671		
2,300.0	2,295.0	2,290.7	2,278.5	5.6	6.5	-94.99	-179.2	-134.7	191.2	179.7	11.45	16.697		

Cathedral Energy Services

Anticollision Report

Company:	Caerus Oil & Gas (NAD 27)	Local Co-ordinate Reference:	Well PUCKETT 42C-2
Project:	Garfield County, CO	TVD Reference:	KB=22' @ 8499.0usft
Reference Site:	S2-T7S-R97W (Puckett Pad)	MD Reference:	KB=22' @ 8499.0usft
Site Error:	0.0usft	North Reference:	True
Reference Well:	PUCKETT 42C-2	Survey Calculation Method:	Minimum Curvature
Well Error:	0.0usft	Output errors are at	2.00 sigma
Reference Wellbore	DD	Database:	USA EDM 5000 Multi Users DB
Reference Design:	Plan #1	Offset TVD Reference:	Offset Datum

Offset Design S2-T7S-R97W (Puckett Pad) - PUCKETT 43B-2 - DD - Plan #1													Offset Site Error: 0.0 usft	
Survey Program: 0-ISCSWA MWD													Offset Well Error: 0.0 usft	
Reference		Offset		Semi Major Axis			Distance							Warning
Measured Depth (usft)	Vertical Depth (usft)	Measured Depth (usft)	Vertical Depth (usft)	Reference (usft)	Offset (usft)	Highside Toolface (°)	Offset Wellbore Centre +N/-S (usft)	+E/-W (usft)	Between Centres (usft)	Between Ellipses (usft)	Total Uncertainty Axis	Separation Factor		
0.0	0.0	0.0	0.0	0.0	0.0	157.25	-22.2	9.3	24.1					
100.0	100.0	100.0	100.0	0.1	0.1	157.25	-22.2	9.3	24.1	23.9	0.18	137.395		
200.0	200.0	200.0	200.0	0.3	0.3	157.25	-22.2	9.3	24.1	23.5	0.62	38.550 CC, ES		
300.0	300.0	299.4	299.4	0.5	0.5	159.86	-23.5	8.6	25.0	24.0	1.06	23.620		
400.0	400.0	398.2	397.9	0.8	0.7	-105.63	-29.1	5.5	29.7	28.2	1.50	19.800 SF		
500.0	499.9	496.2	495.3	1.0	1.0	-100.05	-39.0	-0.1	39.8	37.8	1.97	20.182		
600.0	599.6	594.9	592.8	1.2	1.3	-98.51	-52.0	-7.3	53.5	51.0	2.48	21.601		
700.0	699.4	693.9	690.7	1.4	1.6	-97.64	-65.1	-14.7	67.3	64.3	2.99	22.551		
800.0	799.1	793.0	788.6	1.7	2.0	-97.07	-78.2	-22.0	81.2	77.7	3.51	23.138		
900.0	898.8	892.0	886.5	1.9	2.3	-96.67	-91.4	-29.4	95.0	91.0	4.04	23.528		
1,000.0	998.5	991.0	984.4	2.2	2.7	-96.36	-104.5	-36.7	108.8	104.3	4.57	23.800		
1,100.0	1,098.3	1,090.1	1,082.3	2.5	3.0	-96.13	-117.6	-44.1	122.7	117.6	5.11	24.000		
1,200.0	1,198.0	1,189.1	1,180.2	2.7	3.4	-95.94	-130.7	-51.4	136.5	130.9	5.65	24.152		
1,300.0	1,297.7	1,288.1	1,278.1	3.0	3.8	-95.79	-143.9	-58.8	150.4	144.2	6.20	24.272		
1,400.0	1,397.4	1,387.2	1,375.9	3.2	4.1	-95.66	-157.0	-66.1	164.2	157.5	6.74	24.368		
1,500.0	1,497.2	1,486.2	1,473.8	3.5	4.5	-95.56	-170.1	-73.5	178.1	170.8	7.29	24.447		
1,600.0	1,596.9	1,585.2	1,571.7	3.8	4.9	-95.47	-183.2	-80.8	192.0	184.1	7.83	24.514		

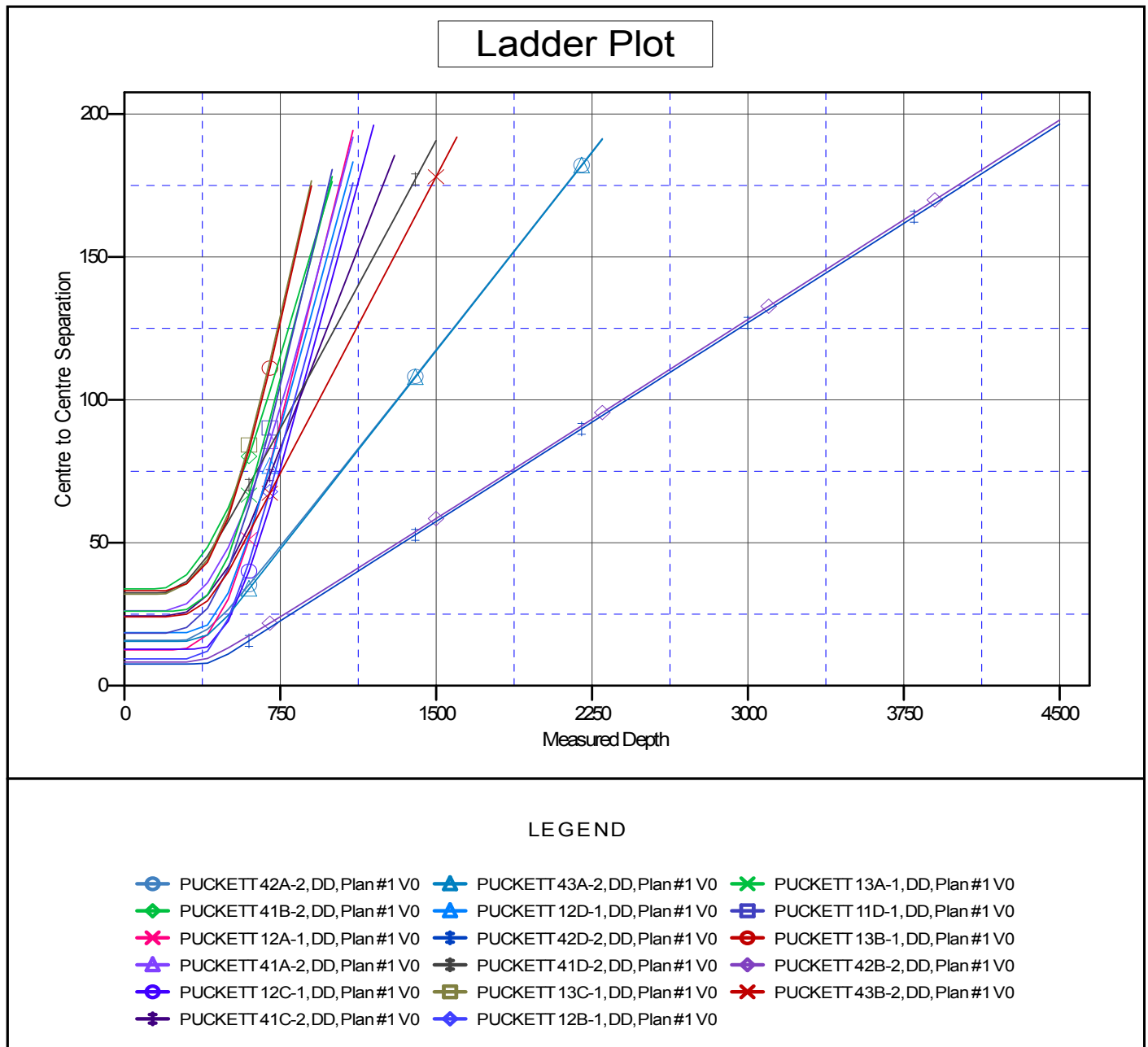
Cathedral Energy Services

Anticollision Report

Company:	Caerus Oil & Gas (NAD 27)	Local Co-ordinate Reference:	Well PUCKETT 42C-2
Project:	Garfield County, CO	TVD Reference:	KB=22' @ 8499.0usft
Reference Site:	S2-T7S-R97W (Puckett Pad)	MD Reference:	KB=22' @ 8499.0usft
Site Error:	0.0usft	North Reference:	True
Reference Well:	PUCKETT 42C-2	Survey Calculation Method:	Minimum Curvature
Well Error:	0.0usft	Output errors are at	2.00 sigma
Reference Wellbore	DD	Database:	USA EDM 5000 Multi Users DB
Reference Design:	Plan #1	Offset TVD Reference:	Offset Datum

Reference Depths are relative to KB=22' @ 8499.0usft
Offset Depths are relative to Offset Datum
Central Meridian is -105.500000 °

Coordinates are relative to: PUCKETT 42C-2
Coordinate System is US State Plane 1927 (Exact solution), Colorado Central 502
Grid Convergence at Surface is: -1.69°



CC - Min centre to center distance or convergent point, SF - min separation factor, ES - min ellipse separation