

T7S, R97W, 6th P.M.

Caerus Oil & Gas LLC

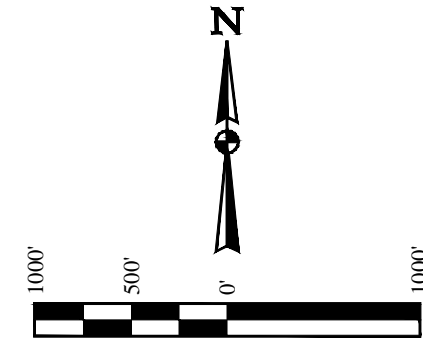
PUCKETT #42A-2  
TRACT 66, SECTION 2, T7S, R97W, 6th P.M.  
GARFIELD COUNTY, COLORADO

BASIS OF BEARINGS

BASIS OF BEARINGS IS A G.P.S. OBSERVATION

BASIS OF ELEVATION

SPOT ELEVATION AT THE NORTHWEST CORNER OF SECTION 30, T5S, R95W, 6th P.M. TAKEN FROM THE FORKED GULCH QUADRANGLE, COLORADO, GARFIELD COUNTY, 7.5 MINUTE SERIES (TOPOGRAPHICAL MAP) PUBLISHED BY THE UNITED STATES DEPARTMENT OF THE INTERIOR, GEOLOGICAL SURVEY. SAID ELEVATION IS MARKED AS BEING 5966 FEET.



CERTIFICATE

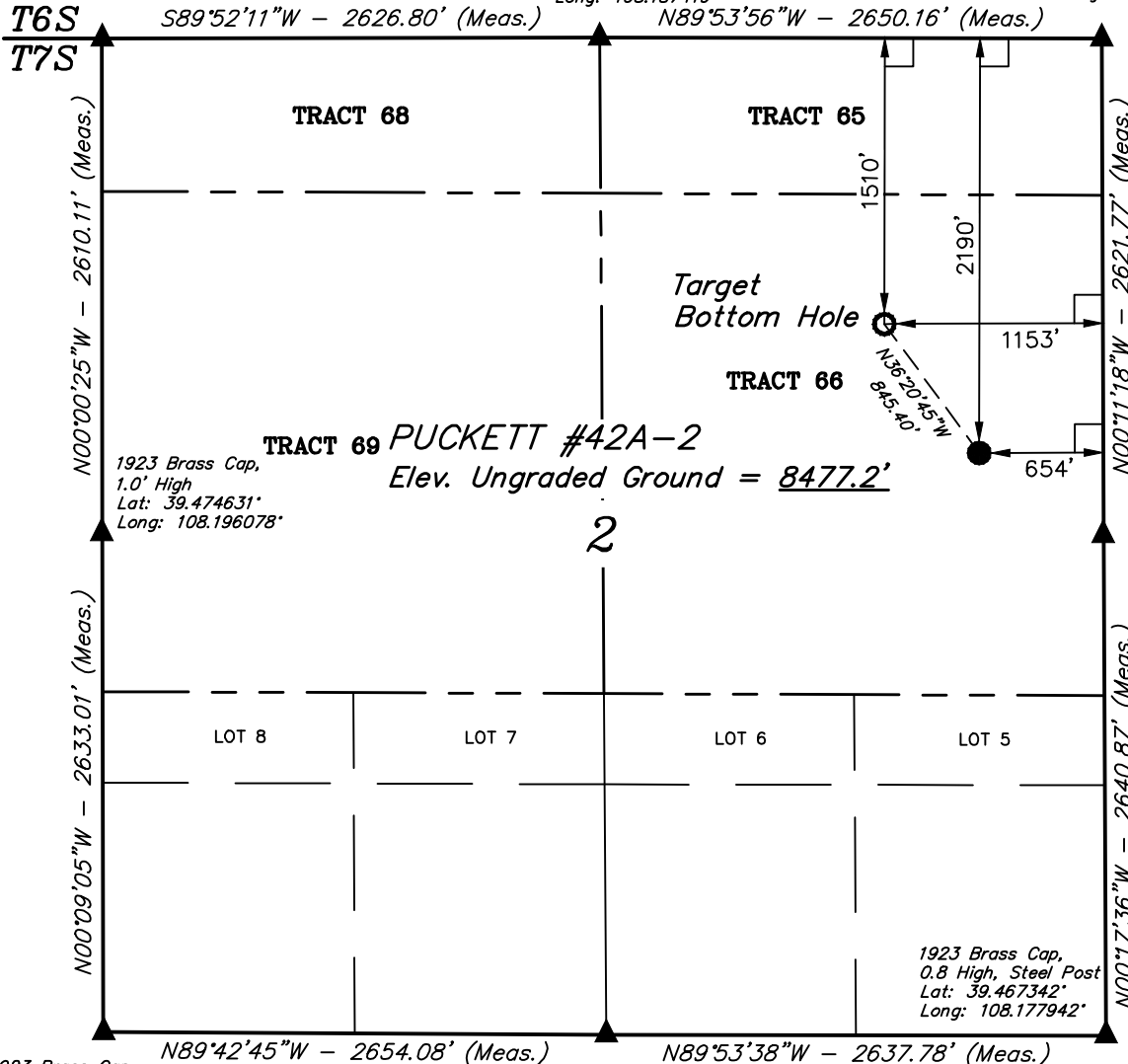
THIS IS TO CERTIFY THAT THE ABOVE PLAT WAS PREPARED FROM FIELD NOTES OF ACTUAL SURVEYS MADE BY ME OR UNDER MY SUPERVISION AND THAT THE SAME ARE TRUE AND CORRECT TO THE BEST OF MY KNOWLEDGE AND BELIEF.

*Handwritten signature: Harold Marshall*  
REGISTERED LAND SURVEYOR  
REGISTRATION NO. 38130  
STATE OF COLORADO  
09-12-14

1920 Brass Cap,  
1.5' High  
Lat: 39.481792°  
Long: 108.196089°

1920 Brass Cap,  
0.5' High  
Lat: 39.481794°  
Long: 108.187419°

1920 Brass Cap,  
0.6' High, Steel  
Post  
Lat: 39.481786°  
Long: 108.178033°



1923 Brass Cap,  
1.5' High  
Lat: 39.467408°  
Long: 108.196058°

1923 Brass Cap,  
2.0' High  
Lat: 39.467350°  
Long: 108.187283°

1923 Brass Cap,  
0.8' High, Steel Post  
Lat: 39.467342°  
Long: 108.177942°

PDOP = 1.3

**LEGEND:**

- = 90° SYMBOL
- = PROPOSED WELLHEAD.
- = TARGET BOTTOM HOLE.
- ▲ = SECTION CORNERS LOCATED.

NAD 83 (TARGET BOTTOM HOLE)	NAD 83 (SURFACE LOCATION)
LATITUDE = 39°28'39.53" (39.477647)	LATITUDE = 39°28'32.80" (39.475778)
LONGITUDE = 108°10'55.54" (108.182094)	LONGITUDE = 108°10'49.15" (108.180319)
NAD 27 (TARGET BOTTOM HOLE)	NAD 27 (SURFACE LOCATION)
LATITUDE = 39°28'39.61" (39.477669)	LATITUDE = 39°28'32.88" (39.475800)
LONGITUDE = 108°10'53.25" (108.181458)	LONGITUDE = 108°10'46.86" (108.179683)



**UELS, LLC**  
Corporate Office \* 85 South 200 East  
Vernal, UT 84078 \* (435) 789-1017

SURVEYED BY: JARED CHRISTOPHER, B.B.	DATE: 08-19-14
DRAWN BY: M.D.	DATE DRAWN: 09-12-14
SCALE: 1" = 1000'	REVISED: 00-00-00

**WELL LOCATION PLAT**