

T7S, R97W, 6th P.M.

Caerus Oil & Gas LLC

PUCKETT #41C-2
TRACT 66, SECTION 2, T7S, R97W, 6th P.M.
GARFIELD COUNTY, COLORADO

1920 Brass Cap,
 1.5' High
 Lat: 39.481792°
 Long: 108.196089°

1920 Brass Cap,
 0.5' High
 Lat: 39.481794°
 Long: 108.187419°

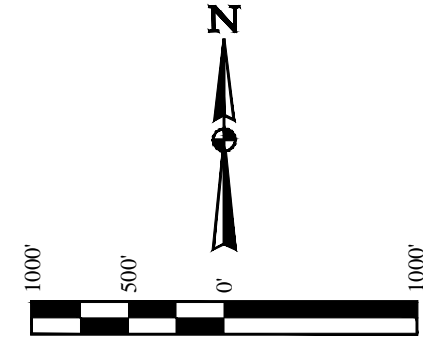
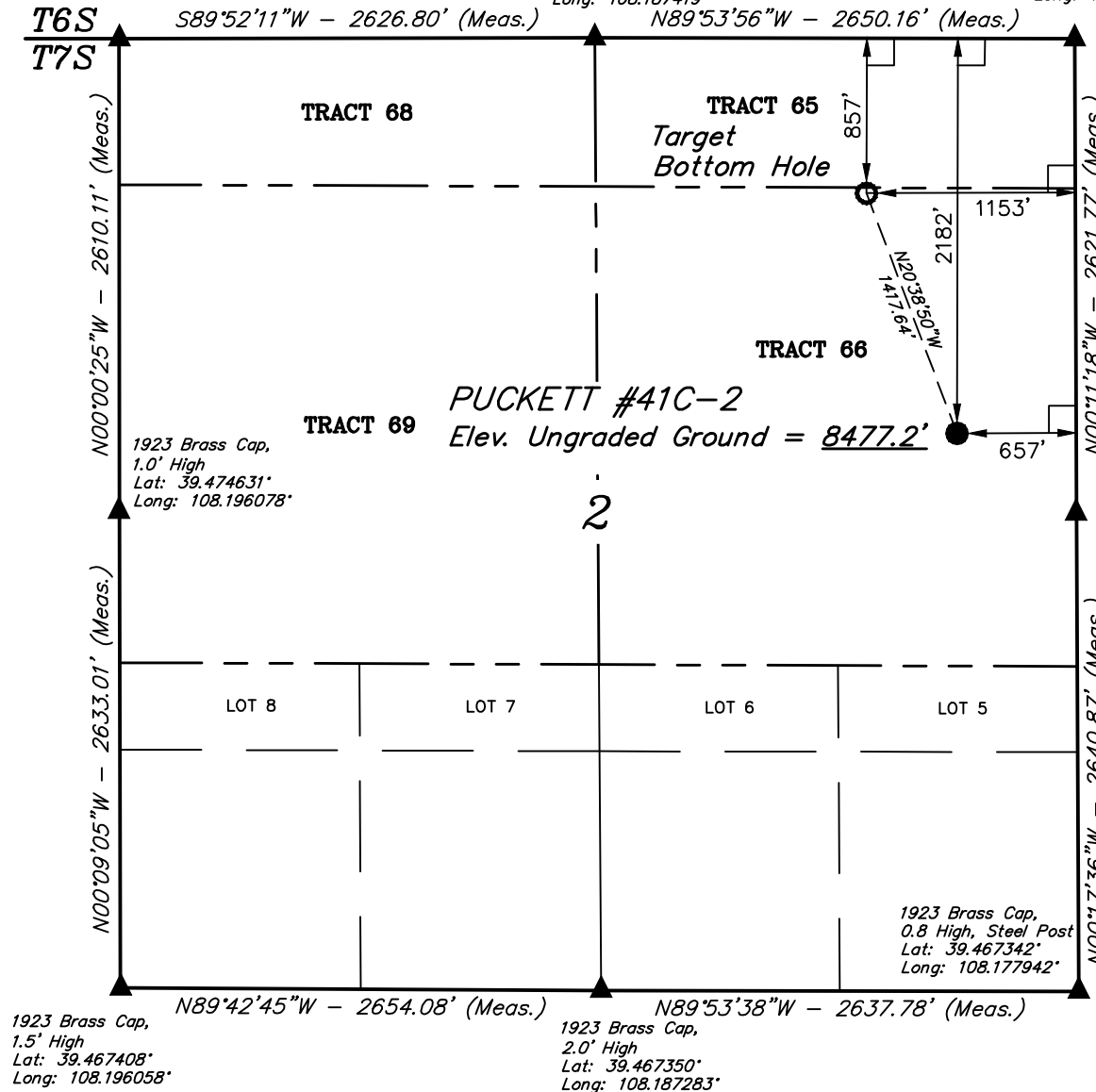
1920 Brass Cap,
 0.6' High, Steel
 Post
 Lat: 39.481786°
 Long: 108.178033°

BASIS OF BEARINGS

BASIS OF BEARINGS IS A G.P.S. OBSERVATION

BASIS OF ELEVATION

SPOT ELEVATION AT THE NORTHWEST CORNER OF SECTION 30, T5S, R95W, 6th P.M. TAKEN FROM THE FORKED GULCH QUADRANGLE, COLORADO, GARFIELD COUNTY, 7.5 MINUTE SERIES (TOPOGRAPHICAL MAP) PUBLISHED BY THE UNITED STATES DEPARTMENT OF THE INTERIOR, GEOLOGICAL SURVEY. SAID ELEVATION IS MARKED AS BEING 5966 FEET.



CERTIFICATE

THIS IS TO CERTIFY THAT THE ABOVE PLAT WAS PREPARED FROM FIELD NOTES OF ACTUAL SURVEYS MADE BY ME OR UNDER MY SUPERVISION AND THAT THE SAME ARE TRUE AND CORRECT TO THE BEST OF MY KNOWLEDGE AND BELIEF.

Handwritten signature: Harold Marshall
 HAROLD MARSHALL
 38130
 PREPARED BY
 REGISTERED LAND SURVEYOR
 REGISTRATION NO. 38130
 STATE OF COLORADO
 08-12-14

LEGEND:

- └─┘ = 90° SYMBOL
- = PROPOSED WELLHEAD.
- = TARGET BOTTOM HOLE.
- ▲ = SECTION CORNERS LOCATED.

NAD 83 (TARGET BOTTOM HOLE)	NAD 83 (SURFACE LOCATION)
LATITUDE = 39°28'45.98" (39.479439)	LATITUDE = 39°28'32.88" (39.475800)
LONGITUDE = 108°10'55.58" (108.182106)	LONGITUDE = 108°10'49.19" (108.180331)
NAD 27 (TARGET BOTTOM HOLE)	NAD 27 (SURFACE LOCATION)
LATITUDE = 39°28'46.06" (39.479461)	LATITUDE = 39°28'32.96" (39.475822)
LONGITUDE = 108°10'53.29" (108.181469)	LONGITUDE = 108°10'46.90" (108.179694)



UELS, LLC
 Corporate Office * 85 South 200 East
 Vernal, UT 84078 * (435) 789-1017

SURVEYED BY: JARED CHRISTOPHER, B.B.	DATE: 08-19-14
DRAWN BY: M.D.	DATE DRAWN: 09-12-14
SCALE: 1" = 1000'	REVISED: 00-00-00

WELL LOCATION PLAT