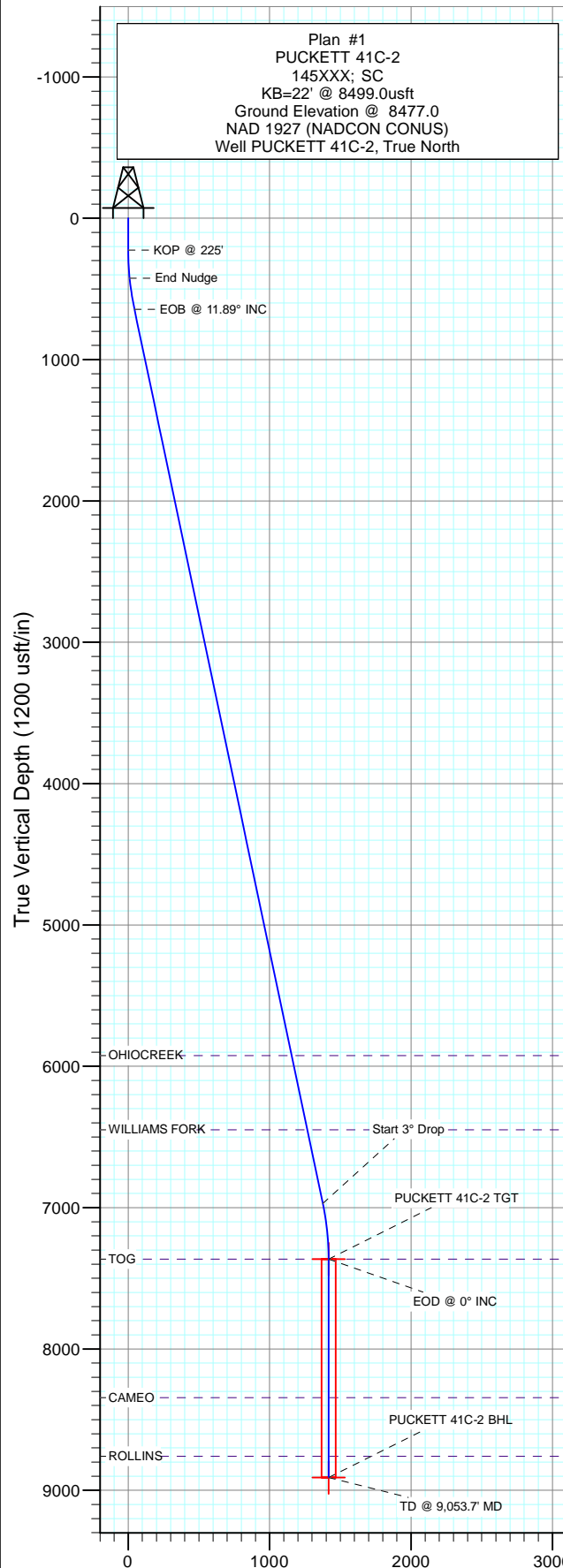


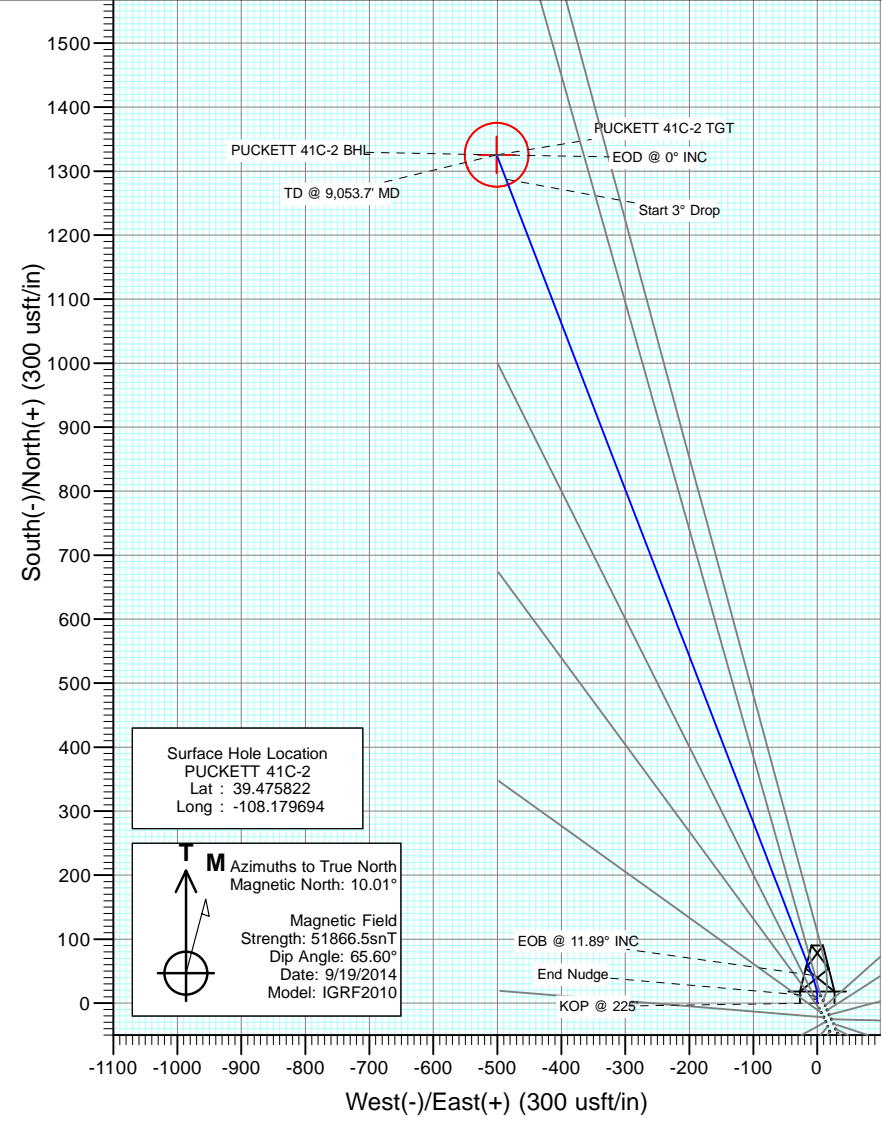


Project: Garfield County, CO
 Site: S2-T7S-R97W (Puckett Pad)
 Well: PUCKETT 41C-2
 Wellbore: DD
 Design: Plan #1



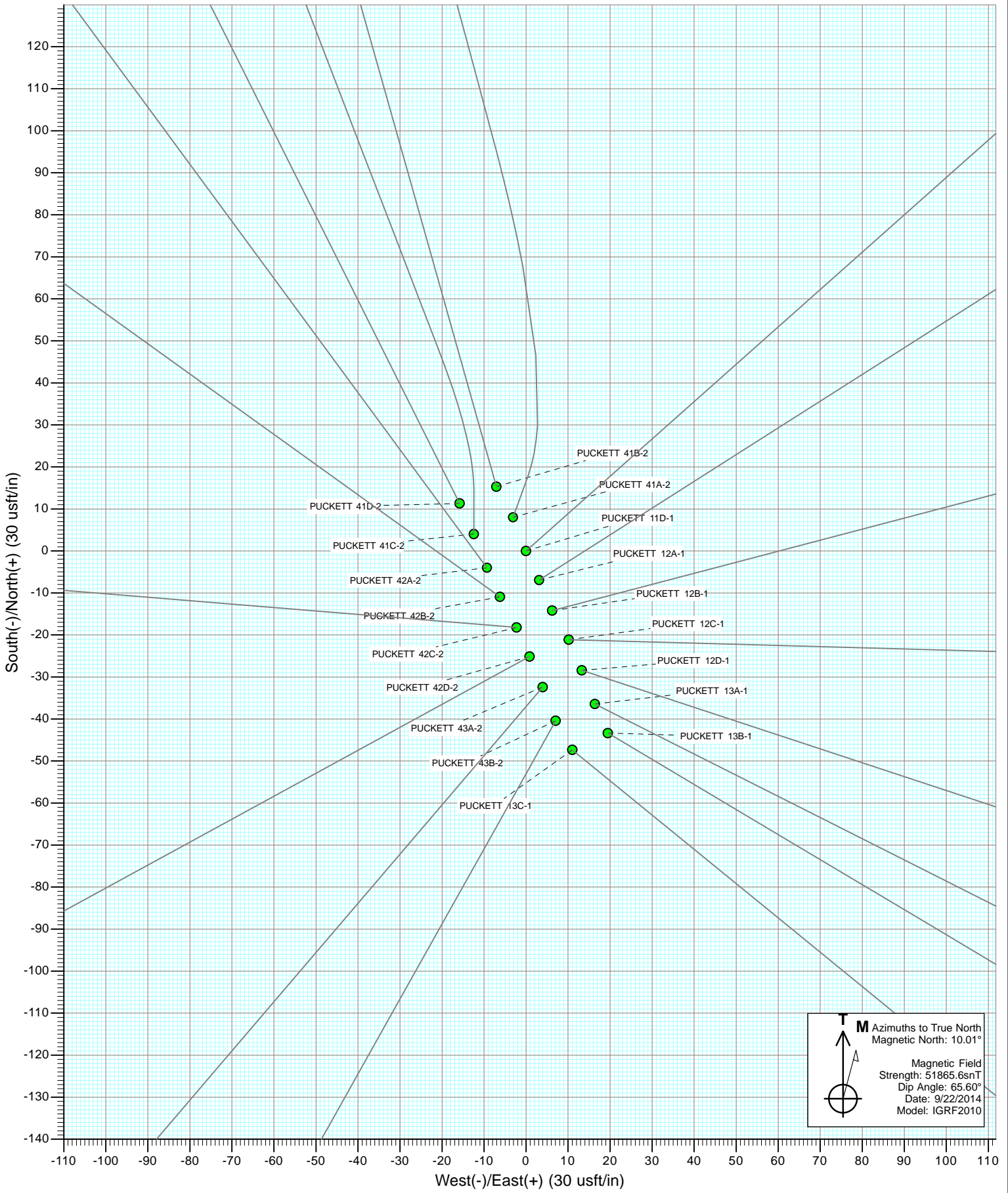
Plan #1
 PUCKETT 41C-2
 145XXX; SC
 KB=22' @ 8499.0usft
 Ground Elevation @ 8477.0
 NAD 1927 (NADCON CONUS)
 Well PUCKETT 41C-2, True North

SECTION DETAILS										
Sec	MD	Inc	Azi	TVD	+N/-S	+E/-W	Dleg	TFace	V Sect	Target
1	0.0	0.00	0.00	0.0	0.0	0.0	0.00	0.00	0.0	
2	225.0	0.00	0.00	225.0	0.0	0.0	0.00	0.00	0.0	
3	425.0	6.00	0.00	424.6	10.5	0.0	3.00	0.00	9.8	
4	646.5	11.89	338.97	643.4	43.4	-8.2	3.00	-39.71	43.5	
5	7112.3	11.89	338.97	6970.4	1287.2	-486.3	0.00	0.00	1376.0	PUCKETT 41C-2 TGT
6	7508.7	0.00	0.00	7364.0	1325.5	-501.0	3.00	180.00	1417.0	PUCKETT 41C-2 BHL
7	9053.7	0.00	0.00	8909.0	1325.5	-501.0	0.00	0.00	1417.0	



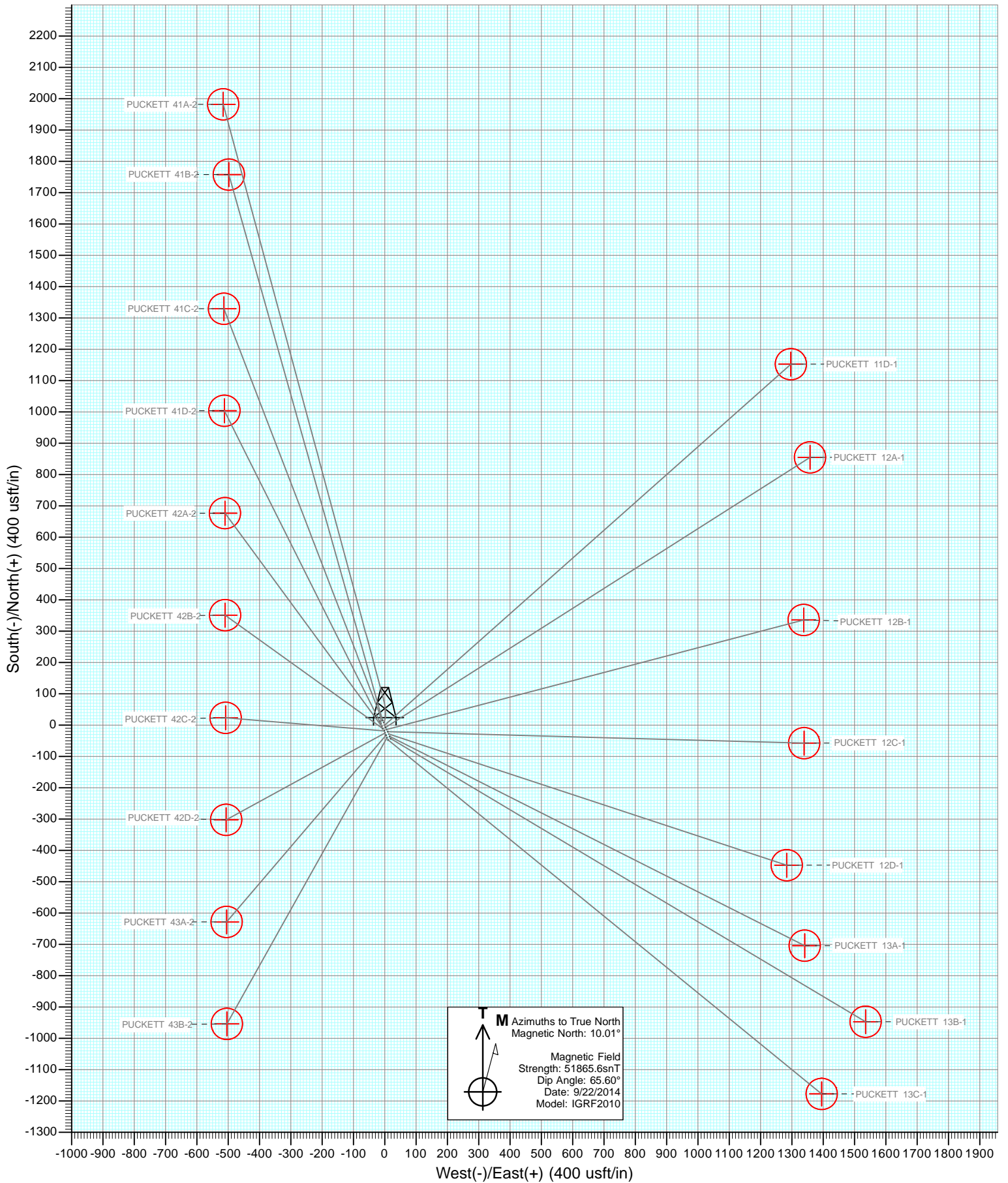
DESIGN TARGET DETAILS						
Name	+N/-S	+E/-W	Northing	Easting	Latitude	Longitude
PUCKETT 41C-2 TGT	1325.5	-501.0	610680.38	1243200.64	39.479461	-108.181469
PUCKETT 41C-2 BHL	1325.5	-501.0	610680.38	1243200.64	39.479461	-108.181469

Vertical Section at 339.29° (1200 usft/in)



M Azimuths to True North
 Magnetic North: 10.01°

Magnetic Field
 Strength: 51865.6snT
 Dip Angle: 65.60°
 Date: 9/22/2014
 Model: IGRF2010



Cathedral Energy Services

Planning Report

Database: USA EDM 5000 Multi Users DB	Local Co-ordinate Reference: Well PUCKETT 41C-2
Company: Caerus Oil & Gas (NAD 27)	TVD Reference: KB=22' @ 8499.0usft
Project: Garfield County, CO	MD Reference: KB=22' @ 8499.0usft
Site: S2-T7S-R97W (Puckett Pad)	North Reference: True
Well: PUCKETT 41C-2	Survey Calculation Method: Minimum Curvature
Wellbore: DD	
Design: Plan #1	

Project Garfield County, CO		
Map System: US State Plane 1927 (Exact solution)	System Datum:	Mean Sea Level
Geo Datum: NAD 1927 (NADCON CONUS)		
Map Zone: Colorado Central 502		

Site S2-T7S-R97W (Puckett Pad)			
Site Position:	Northing:	609,295.75 usft	Latitude: 39.475700
From: Lat/Long	Easting:	1,243,680.53 usft	Longitude: -108.179625
Position Uncertainty: 0.0 usft	Slot Radius: 13-3/16"		Grid Convergence: -1.69 °

Well PUCKETT 41C-2				
Well Position	+N/-S	0.0 usft	Northing: 609,340.73 usft	Latitude: 39.475822
	+E/-W	0.0 usft	Easting: 1,243,662.37 usft	Longitude: -108.179694
Position Uncertainty		0.0 usft	Wellhead Elevation: 0.0 usft	Ground Level: 8,477.0 usft

Wellbore DD					
Magnetics	Model Name	Sample Date	Declination	Dip Angle	Field Strength
	IGRF2010	9/19/2014	(°) 10.01	(°) 65.60	(nT) 51,866

Design Plan #1				
Audit Notes:				
Version:	Phase:	PLAN	Tie On Depth:	0.0
Vertical Section:	Depth From (TVD)	+N/-S	+E/-W	Direction
	(usft)	(usft)	(usft)	(°)
	0.0	0.0	0.0	339.29

Plan Sections										
Measured Depth (usft)	Inclination (°)	Azimuth (°)	Vertical Depth (usft)	+N/-S (usft)	+E/-W (usft)	Dogleg Rate (°/100usft)	Build Rate (°/100usft)	Turn Rate (°/100usft)	TFO (°)	Target
0.0	0.00	0.00	0.0	0.0	0.0	0.00	0.00	0.00	0.00	
225.0	0.00	0.00	225.0	0.0	0.0	0.00	0.00	0.00	0.00	
425.0	6.00	0.00	424.6	10.5	0.0	3.00	3.00	0.00	0.00	
646.5	11.89	338.97	643.4	43.4	-8.2	3.00	2.66	-9.49	-39.71	
7,112.3	11.89	338.97	6,970.4	1,287.2	-486.3	0.00	0.00	0.00	0.00	
7,508.7	0.00	0.00	7,364.0	1,325.5	-501.0	3.00	-3.00	0.00	180.00	PUCKETT 41C-2 TG1
9,053.7	0.00	0.00	8,909.0	1,325.5	-501.0	0.00	0.00	0.00	0.00	PUCKETT 41C-2 BHL

Cathedral Energy Services

Planning Report

Database:	USA EDM 5000 Multi Users DB	Local Co-ordinate Reference:	Well PUCKETT 41C-2
Company:	Caerus Oil & Gas (NAD 27)	TVD Reference:	KB=22' @ 8499.0usft
Project:	Garfield County, CO	MD Reference:	KB=22' @ 8499.0usft
Site:	S2-T7S-R97W (Puckett Pad)	North Reference:	True
Well:	PUCKETT 41C-2	Survey Calculation Method:	Minimum Curvature
Wellbore:	DD		
Design:	Plan #1		

Planned Survey									
Measured Depth (usft)	Inclination (°)	Azimuth (°)	Vertical Depth (usft)	+N/-S (usft)	+E/-W (usft)	Vertical Section (usft)	Dogleg Rate (°/100usft)	Build Rate (°/100u)	Comments / Formations
0.0	0.00	0.00	0.0	0.0	0.0	0.0	0.00	0.00	
100.0	0.00	0.00	100.0	0.0	0.0	0.0	0.00	0.00	
200.0	0.00	0.00	200.0	0.0	0.0	0.0	0.00	0.00	
225.0	0.00	0.00	225.0	0.0	0.0	0.0	0.00	0.00	KOP @ 225'
300.0	2.25	0.00	300.0	1.5	0.0	1.4	3.00	3.00	
400.0	5.25	0.00	399.8	8.0	0.0	7.5	3.00	3.00	
425.0	6.00	0.00	424.6	10.5	0.0	9.8	3.00	3.00	End Nudge
500.0	7.86	349.43	499.1	19.4	-0.9	18.5	3.00	2.48	
600.0	10.58	341.44	597.8	34.9	-5.1	34.4	3.00	2.72	
646.5	11.89	338.97	643.4	43.4	-8.2	43.5	3.00	2.82	EOB @ 11.89° INC
700.0	11.89	338.97	695.7	53.7	-12.2	54.5	0.00	0.00	
800.0	11.89	338.97	793.6	72.9	-19.5	75.1	0.00	0.00	
900.0	11.89	338.97	891.5	92.1	-26.9	95.7	0.00	0.00	
1,000.0	11.89	338.97	989.3	111.4	-34.3	116.3	0.00	0.00	
1,100.0	11.89	338.97	1,087.2	130.6	-41.7	136.9	0.00	0.00	
1,200.0	11.89	338.97	1,185.0	149.9	-49.1	157.5	0.00	0.00	
1,300.0	11.89	338.97	1,282.9	169.1	-56.5	178.2	0.00	0.00	
1,400.0	11.89	338.97	1,380.7	188.3	-63.9	198.8	0.00	0.00	
1,500.0	11.89	338.97	1,478.6	207.6	-71.3	219.4	0.00	0.00	
1,600.0	11.89	338.97	1,576.4	226.8	-78.7	240.0	0.00	0.00	
1,700.0	11.89	338.97	1,674.3	246.0	-86.1	260.6	0.00	0.00	
1,800.0	11.89	338.97	1,772.1	265.3	-93.5	281.2	0.00	0.00	
1,900.0	11.89	338.97	1,870.0	284.5	-100.9	301.8	0.00	0.00	
2,000.0	11.89	338.97	1,967.8	303.7	-108.3	322.4	0.00	0.00	
2,100.0	11.89	338.97	2,065.7	323.0	-115.7	343.0	0.00	0.00	
2,200.0	11.89	338.97	2,163.5	342.2	-123.1	363.6	0.00	0.00	
2,300.0	11.89	338.97	2,261.4	361.5	-130.5	384.2	0.00	0.00	
2,400.0	11.89	338.97	2,359.3	380.7	-137.9	404.8	0.00	0.00	
2,500.0	11.89	338.97	2,457.1	399.9	-145.3	425.5	0.00	0.00	
2,600.0	11.89	338.97	2,555.0	419.2	-152.7	446.1	0.00	0.00	
2,700.0	11.89	338.97	2,652.8	438.4	-160.0	466.7	0.00	0.00	
2,800.0	11.89	338.97	2,750.7	457.6	-167.4	487.3	0.00	0.00	
2,900.0	11.89	338.97	2,848.5	476.9	-174.8	507.9	0.00	0.00	
3,000.0	11.89	338.97	2,946.4	496.1	-182.2	528.5	0.00	0.00	
3,100.0	11.89	338.97	3,044.2	515.3	-189.6	549.1	0.00	0.00	
3,200.0	11.89	338.97	3,142.1	534.6	-197.0	569.7	0.00	0.00	
3,300.0	11.89	338.97	3,239.9	553.8	-204.4	590.3	0.00	0.00	
3,400.0	11.89	338.97	3,337.8	573.1	-211.8	610.9	0.00	0.00	
3,500.0	11.89	338.97	3,435.6	592.3	-219.2	631.5	0.00	0.00	
3,600.0	11.89	338.97	3,533.5	611.5	-226.6	652.2	0.00	0.00	
3,700.0	11.89	338.97	3,631.3	630.8	-234.0	672.8	0.00	0.00	
3,800.0	11.89	338.97	3,729.2	650.0	-241.4	693.4	0.00	0.00	
3,900.0	11.89	338.97	3,827.1	669.2	-248.8	714.0	0.00	0.00	
4,000.0	11.89	338.97	3,924.9	688.5	-256.2	734.6	0.00	0.00	
4,100.0	11.89	338.97	4,022.8	707.7	-263.6	755.2	0.00	0.00	
4,200.0	11.89	338.97	4,120.6	727.0	-271.0	775.8	0.00	0.00	
4,300.0	11.89	338.97	4,218.5	746.2	-278.4	796.4	0.00	0.00	
4,400.0	11.89	338.97	4,316.3	765.4	-285.8	817.0	0.00	0.00	
4,500.0	11.89	338.97	4,414.2	784.7	-293.2	837.6	0.00	0.00	
4,600.0	11.89	338.97	4,512.0	803.9	-300.5	858.2	0.00	0.00	
4,700.0	11.89	338.97	4,609.9	823.1	-307.9	878.8	0.00	0.00	
4,800.0	11.89	338.97	4,707.7	842.4	-315.3	899.5	0.00	0.00	

Cathedral Energy Services

Planning Report

Database: USA EDM 5000 Multi Users DB
Company: Caerus Oil & Gas (NAD 27)
Project: Garfield County, CO
Site: S2-T7S-R97W (Puckett Pad)
Well: PUCKETT 41C-2
Wellbore: DD
Design: Plan #1

Local Co-ordinate Reference: Well PUCKETT 41C-2
TVD Reference: KB=22' @ 8499.0usft
MD Reference: KB=22' @ 8499.0usft
North Reference: True
Survey Calculation Method: Minimum Curvature

Planned Survey

Measured Depth (usft)	Inclination (°)	Azimuth (°)	Vertical Depth (usft)	+N/-S (usft)	+E/-W (usft)	Vertical Section (usft)	Dogleg Rate (°/100usft)	Build Rate (°/100u)	Comments / Formations
4,900.0	11.89	338.97	4,805.6	861.6	-322.7	920.1	0.00	0.00	
5,000.0	11.89	338.97	4,903.4	880.8	-330.1	940.7	0.00	0.00	
5,100.0	11.89	338.97	5,001.3	900.1	-337.5	961.3	0.00	0.00	
5,200.0	11.89	338.97	5,099.1	919.3	-344.9	981.9	0.00	0.00	
5,300.0	11.89	338.97	5,197.0	938.6	-352.3	1,002.5	0.00	0.00	
5,400.0	11.89	338.97	5,294.9	957.8	-359.7	1,023.1	0.00	0.00	
5,500.0	11.89	338.97	5,392.7	977.0	-367.1	1,043.7	0.00	0.00	
5,600.0	11.89	338.97	5,490.6	996.3	-374.5	1,064.3	0.00	0.00	
5,700.0	11.89	338.97	5,588.4	1,015.5	-381.9	1,084.9	0.00	0.00	
5,800.0	11.89	338.97	5,686.3	1,034.7	-389.3	1,105.5	0.00	0.00	
5,900.0	11.89	338.97	5,784.1	1,054.0	-396.7	1,126.2	0.00	0.00	
6,000.0	11.89	338.97	5,882.0	1,073.2	-404.1	1,146.8	0.00	0.00	
6,042.9	11.89	338.97	5,924.0	1,081.5	-407.3	1,155.6	0.00	0.00	OHIOCREEK
6,100.0	11.89	338.97	5,979.8	1,092.4	-411.5	1,167.4	0.00	0.00	
6,200.0	11.89	338.97	6,077.7	1,111.7	-418.9	1,188.0	0.00	0.00	
6,300.0	11.89	338.97	6,175.5	1,130.9	-426.3	1,208.6	0.00	0.00	
6,400.0	11.89	338.97	6,273.4	1,150.2	-433.7	1,229.2	0.00	0.00	
6,500.0	11.89	338.97	6,371.2	1,169.4	-441.0	1,249.8	0.00	0.00	
6,579.5	11.89	338.97	6,449.0	1,184.7	-446.9	1,266.2	0.00	0.00	WILLIAMS FORK
6,600.0	11.89	338.97	6,469.1	1,188.6	-448.4	1,270.4	0.00	0.00	
6,700.0	11.89	338.97	6,566.9	1,207.9	-455.8	1,291.0	0.00	0.00	
6,800.0	11.89	338.97	6,664.8	1,227.1	-463.2	1,311.6	0.00	0.00	
6,900.0	11.89	338.97	6,762.7	1,246.3	-470.6	1,332.2	0.00	0.00	
7,000.0	11.89	338.97	6,860.5	1,265.6	-478.0	1,352.8	0.00	0.00	
7,100.0	11.89	338.97	6,958.4	1,284.8	-485.4	1,373.5	0.00	0.00	
7,112.3	11.89	338.97	6,970.4	1,287.2	-486.3	1,376.0	0.00	0.00	Start 3° Drop
7,200.0	9.26	338.97	7,056.6	1,302.2	-492.1	1,392.1	3.00	-3.00	
7,300.0	6.26	338.97	7,155.7	1,314.8	-496.9	1,405.6	3.00	-3.00	
7,400.0	3.26	338.97	7,255.3	1,322.6	-499.9	1,413.9	3.00	-3.00	
7,508.7	0.00	0.00	7,364.0	1,325.5	-501.0	1,417.0	3.00	-3.00	EOD @ 0° INC - TOG
7,600.0	0.00	0.00	7,455.3	1,325.5	-501.0	1,417.0	0.00	0.00	
7,700.0	0.00	0.00	7,555.3	1,325.5	-501.0	1,417.0	0.00	0.00	
7,800.0	0.00	0.00	7,655.3	1,325.5	-501.0	1,417.0	0.00	0.00	
7,900.0	0.00	0.00	7,755.3	1,325.5	-501.0	1,417.0	0.00	0.00	
8,000.0	0.00	0.00	7,855.3	1,325.5	-501.0	1,417.0	0.00	0.00	
8,100.0	0.00	0.00	7,955.3	1,325.5	-501.0	1,417.0	0.00	0.00	
8,200.0	0.00	0.00	8,055.3	1,325.5	-501.0	1,417.0	0.00	0.00	
8,300.0	0.00	0.00	8,155.3	1,325.5	-501.0	1,417.0	0.00	0.00	
8,400.0	0.00	0.00	8,255.3	1,325.5	-501.0	1,417.0	0.00	0.00	
8,488.7	0.00	0.00	8,344.0	1,325.5	-501.0	1,417.0	0.00	0.00	CAMEO
8,500.0	0.00	0.00	8,355.3	1,325.5	-501.0	1,417.0	0.00	0.00	
8,600.0	0.00	0.00	8,455.3	1,325.5	-501.0	1,417.0	0.00	0.00	
8,700.0	0.00	0.00	8,555.3	1,325.5	-501.0	1,417.0	0.00	0.00	
8,800.0	0.00	0.00	8,655.3	1,325.5	-501.0	1,417.0	0.00	0.00	
8,900.0	0.00	0.00	8,755.3	1,325.5	-501.0	1,417.0	0.00	0.00	
8,903.7	0.00	0.00	8,759.0	1,325.5	-501.0	1,417.0	0.00	0.00	ROLLINS
9,000.0	0.00	0.00	8,855.3	1,325.5	-501.0	1,417.0	0.00	0.00	
9,053.7	0.00	0.00	8,909.0	1,325.5	-501.0	1,417.0	0.00	0.00	TD @ 9,053.7' MD

Cathedral Energy Services

Planning Report

Database:	USA EDM 5000 Multi Users DB	Local Co-ordinate Reference:	Well PUCKETT 41C-2
Company:	Caerus Oil & Gas (NAD 27)	TVD Reference:	KB=22' @ 8499.0usft
Project:	Garfield County, CO	MD Reference:	KB=22' @ 8499.0usft
Site:	S2-T7S-R97W (Puckett Pad)	North Reference:	True
Well:	PUCKETT 41C-2	Survey Calculation Method:	Minimum Curvature
Wellbore:	DD		
Design:	Plan #1		

Targets									
Target Name	Dip Angle	Dip Dir.	TVD	+N/-S	+E/-W	Northing	Easting	Latitude	Longitude
- hit/miss target	(°)	(°)	(usft)	(usft)	(usft)	(usft)	(usft)		
- Shape									
PUCKETT 41C-2 BHL - plan hits target center - Circle (radius 50.0)	0.00	0.00	8,909.0	1,325.5	-501.0	610,680.38	1,243,200.64	39.479461	-108.181469
PUCKETT 41C-2 TGT - plan hits target center - Point	0.00	0.00	7,364.0	1,325.5	-501.0	610,680.38	1,243,200.64	39.479461	-108.181469

Formations						
Measured Depth	Vertical Depth	Name	Lithology	Dip	Dip Direction	
(usft)	(usft)			(°)	(°)	
6,042.9	5,924.0	OHIOCREEK				
6,579.5	6,449.0	WILLIAMS FORK				
7,508.7	7,364.0	TOG				
8,488.7	8,344.0	CAMEO				
8,903.7	8,759.0	ROLLINS				

Plan Annotations					
Measured Depth	Vertical Depth	Local Coordinates		Comment	
(usft)	(usft)	+N/-S	+E/-W		
		(usft)	(usft)		
225.0	225.0	0.0	0.0	KOP @ 225'	
425.0	424.6	10.5	0.0	End Nudge	
646.5	643.4	43.4	-8.2	EOB @ 11.89° INC	
7,112.3	6,970.4	1,287.2	-486.3	Start 3° Drop	
7,508.7	7,364.0	1,325.5	-501.0	EOD @ 0° INC	
9,053.7	8,909.0	1,325.5	-501.0	TD @ 9,053.7' MD	

Caerus Oil & Gas (NAD 27)

Garfield County, CO

S2-T7S-R97W (Puckett Pad)

PUCKETT 41C-2

DD

Plan #1

Anticollision Report

22 September, 2014

Cathedral Energy Services

Anticollision Report

Company:	Caerus Oil & Gas (NAD 27)	Local Co-ordinate Reference:	Well PUCKETT 41C-2
Project:	Garfield County, CO	TVD Reference:	KB=22' @ 8499.0usft
Reference Site:	S2-T7S-R97W (Puckett Pad)	MD Reference:	KB=22' @ 8499.0usft
Site Error:	0.0usft	North Reference:	True
Reference Well:	PUCKETT 41C-2	Survey Calculation Method:	Minimum Curvature
Well Error:	0.0usft	Output errors are at	2.00 sigma
Reference Wellbore	DD	Database:	USA EDM 5000 Multi Users DB
Reference Design:	Plan #1	Offset TVD Reference:	Offset Datum

Reference	Plan #1		
Filter type:	NO GLOBAL FILTER: Using user defined selection & filtering criteria		
Interpolation Method:	MD Interval 100.0usft	Error Model:	ISCWSA
Depth Range:	Unlimited	Scan Method:	Closest Approach 3D
Results Limited by:	Maximum center-center distance of 200.0usft	Error Surface:	Elliptical Conic
Warning Levels Evaluated at:	2.00 Sigma		

Survey Tool Program		Date	9/22/2014		
From (usft)	To (usft)	Survey (Wellbore)	Tool Name	Description	
0.0	9,053.7	Plan #1 (DD)	ISCWSA MWD	MWD - Standard	

Cathedral Energy Services

Anticollision Report

Company:	Caerus Oil & Gas (NAD 27)	Local Co-ordinate Reference:	Well PUCKETT 41C-2
Project:	Garfield County, CO	TVD Reference:	KB=22' @ 8499.0usft
Reference Site:	S2-T7S-R97W (Puckett Pad)	MD Reference:	KB=22' @ 8499.0usft
Site Error:	0.0usft	North Reference:	True
Reference Well:	PUCKETT 41C-2	Survey Calculation Method:	Minimum Curvature
Well Error:	0.0usft	Output errors are at	2.00 sigma
Reference Wellbore	DD	Database:	USA EDM 5000 Multi Users DB
Reference Design:	Plan #1	Offset TVD Reference:	Offset Datum

Summary

Site Name Offset Well - Wellbore - Design	Reference	Offset	Distance		Separation Factor	Warning
	Measured Depth (usft)	Measured Depth (usft)	Between Centres (usft)	Between Ellipses (usft)		
S2-T7S-R97W (Puckett Pad)						
PUCKETT 11D-1 - DD - Plan #1	200.0	200.0	13.1	12.4	20.886	CC, ES
PUCKETT 11D-1 - DD - Plan #1	400.0	398.9	20.8	19.3	13.293	SF
PUCKETT 12A-1 - DD - Plan #1	200.0	200.0	19.0	18.4	30.384	CC, ES
PUCKETT 12A-1 - DD - Plan #1	400.0	399.2	25.9	24.2	16.066	SF
PUCKETT 12B-1 - DD - Plan #1	200.0	200.0	26.1	25.4	41.695	CC, ES
PUCKETT 12B-1 - DD - Plan #1	400.0	399.1	33.2	31.5	20.151	SF
PUCKETT 12C-1 - DD - Plan #1	200.0	200.0	33.8	33.2	54.073	CC, ES
PUCKETT 12C-1 - DD - Plan #1	500.0	496.9	53.4	51.2	23.619	SF
PUCKETT 12D-1 - DD - Plan #1	200.0	200.0	41.4	40.7	66.193	CC, ES
PUCKETT 12D-1 - DD - Plan #1	500.0	494.2	65.9	63.6	28.907	SF
PUCKETT 13A-1 - DD - Plan #1	200.0	200.0	49.6	49.0	79.435	CC
PUCKETT 13A-1 - DD - Plan #1	200.2	200.2	49.6	49.0	79.136	ES
PUCKETT 13A-1 - DD - Plan #1	500.0	491.0	80.0	77.7	34.780	SF
PUCKETT 13B-1 - DD - Plan #1	200.0	200.0	57.1	56.5	91.370	CC, ES
PUCKETT 13B-1 - DD - Plan #1	500.0	487.4	94.1	91.8	40.393	SF
PUCKETT 13C-1 - DD - Plan #1	155.6	155.6	56.4	56.0	132.796	CC
PUCKETT 13C-1 - DD - Plan #1	200.0	199.4	56.6	56.0	91.460	ES
PUCKETT 13C-1 - DD - Plan #1	500.0	485.9	98.3	96.0	41.438	SF
PUCKETT 41A-2 - DD - Plan #1	200.0	200.0	10.1	9.5	16.229	CC, ES
PUCKETT 41A-2 - DD - Plan #1	800.0	799.2	30.1	25.8	7.045	SF
PUCKETT 41B-2 - DD - Plan #1	144.8	144.8	12.5	12.1	33.194	CC, ES
PUCKETT 41B-2 - DD - Plan #1	600.0	596.0	24.9	22.1	8.640	SF
PUCKETT 41D-2 - DD - Plan #1	155.6	155.6	8.0	7.6	18.900	CC
PUCKETT 41D-2 - DD - Plan #1	200.0	199.9	8.2	7.6	13.111	ES
PUCKETT 41D-2 - DD - Plan #1	1,000.0	997.2	18.9	13.0	3.226	SF
PUCKETT 42A-2 - DD - Plan #1	200.0	200.0	8.6	8.0	13.753	CC, ES
PUCKETT 42A-2 - DD - Plan #1	400.0	400.5	12.7	11.0	7.461	SF
PUCKETT 42B-2 - DD - Plan #1	200.0	200.0	16.2	15.5	25.884	CC, ES
PUCKETT 42B-2 - DD - Plan #1	500.0	500.9	29.7	27.4	13.072	SF
PUCKETT 42C-2 - DD - Plan #1	200.0	200.0	24.4	23.8	39.100	CC, ES
PUCKETT 42C-2 - DD - Plan #1	500.0	499.9	41.9	39.6	18.357	SF
PUCKETT 42D-2 - DD - Plan #1	200.0	200.0	32.0	31.4	51.239	CC, ES
PUCKETT 42D-2 - DD - Plan #1	500.0	497.8	52.8	50.5	23.007	SF
PUCKETT 43A-2 - DD - Plan #1	200.0	200.0	39.9	39.3	63.909	CC, ES
PUCKETT 43A-2 - DD - Plan #1	500.0	494.5	66.3	63.9	28.589	SF
PUCKETT 43B-2 - DD - Plan #1	200.0	200.0	48.5	47.9	77.640	CC, ES
PUCKETT 43B-2 - DD - Plan #1	500.0	490.9	81.3	78.9	34.621	SF

CC - Min centre to center distance or convergent point, SF - min separation factor, ES - min ellipse separation

Cathedral Energy Services

Anticollision Report

Company:	Caerus Oil & Gas (NAD 27)	Local Co-ordinate Reference:	Well PUCKETT 41C-2
Project:	Garfield County, CO	TVD Reference:	KB=22' @ 8499.0usft
Reference Site:	S2-T7S-R97W (Puckett Pad)	MD Reference:	KB=22' @ 8499.0usft
Site Error:	0.0usft	North Reference:	True
Reference Well:	PUCKETT 41C-2	Survey Calculation Method:	Minimum Curvature
Well Error:	0.0usft	Output errors are at	2.00 sigma
Reference Wellbore	DD	Database:	USA EDM 5000 Multi Users DB
Reference Design:	Plan #1	Offset TVD Reference:	Offset Datum

Offset Design													Offset Site Error:	0.0 usft
S2-T7S-R97W (Puckett Pad) - PUCKETT 11D-1 - DD - Plan #1													Offset Well Error:	0.0 usft
Survey Program: 0-ISCSWA MWD														
Reference		Offset		Semi Major Axis			Distance						Warning	
Measured Depth (usft)	Vertical Depth (usft)	Measured Depth (usft)	Vertical Depth (usft)	Reference (usft)	Offset (usft)	Highside Toolface (°)	Offset Wellbore Centre +N/-S (usft)	+E/-W (usft)	Between Centres (usft)	Between Ellipses (usft)	Total Uncertainty Axis	Separation Factor		
0.0	0.0	0.0	0.0	0.0	0.0	107.88	-4.0	12.4	13.1					
100.0	100.0	100.0	100.0	0.1	0.1	107.88	-4.0	12.4	13.1	12.9	0.18	74.441		
200.0	200.0	200.0	200.0	0.3	0.3	107.88	-4.0	12.4	13.1	12.4	0.62	20.886	CC, ES	
300.0	300.0	299.6	299.6	0.5	0.5	104.58	-2.3	14.4	14.9	13.8	1.08	13.774		
400.0	399.8	398.9	398.5	0.8	0.8	103.96	2.9	20.2	20.8	19.3	1.57	13.293	SF	
500.0	499.1	497.5	496.3	1.0	1.1	114.48	11.4	29.7	31.8	29.7	2.16	14.755		
600.0	597.8	594.7	591.9	1.4	1.4	120.95	23.0	42.8	49.7	46.9	2.84	17.534		
700.0	695.7	690.1	684.8	1.7	1.8	121.69	37.5	59.2	73.9	70.4	3.54	20.891		
800.0	793.6	786.7	778.3	2.1	2.3	120.18	53.6	77.2	99.8	95.6	4.24	23.527		
900.0	891.5	883.2	871.8	2.6	2.7	119.30	69.6	95.2	125.8	120.8	4.98	25.274		
1,000.0	989.3	979.8	965.3	3.0	3.2	118.72	85.6	113.3	151.7	146.0	5.73	26.460		
1,100.0	1,087.2	1,076.4	1,058.8	3.4	3.7	118.30	101.6	131.3	177.7	171.2	6.51	27.315		

CC - Min centre to center distance or convergent point, SF - min separation factor, ES - min ellipse separation

Cathedral Energy Services

Anticollision Report

Company:	Caerus Oil & Gas (NAD 27)	Local Co-ordinate Reference:	Well PUCKETT 41C-2
Project:	Garfield County, CO	TVD Reference:	KB=22' @ 8499.0usft
Reference Site:	S2-T7S-R97W (Puckett Pad)	MD Reference:	KB=22' @ 8499.0usft
Site Error:	0.0usft	North Reference:	True
Reference Well:	PUCKETT 41C-2	Survey Calculation Method:	Minimum Curvature
Well Error:	0.0usft	Output errors are at	2.00 sigma
Reference Wellbore	DD	Database:	USA EDM 5000 Multi Users DB
Reference Design:	Plan #1	Offset TVD Reference:	Offset Datum

Offset Design													Offset Site Error:	0.0 usft
S2-T7S-R97W (Puckett Pad) - PUCKETT 12A-1 - DD - Plan #1													Offset Well Error:	0.0 usft
Survey Program: 0-ISCSWA MWD														
Reference		Offset		Semi Major Axis			Distance							
Measured Depth (usft)	Vertical Depth (usft)	Measured Depth (usft)	Vertical Depth (usft)	Reference (usft)	Offset (usft)	Highside Toolface (°)	Offset Wellbore Centre +N/-S (usft)	+E/-W (usft)	Between Centres (usft)	Between Ellipses (usft)	Total Uncertainty Axis	Separation Factor	Warning	
0.0	0.0	0.0	0.0	0.0	0.0	125.14	-10.9	15.5	19.0					
100.0	100.0	100.0	100.0	0.1	0.1	125.14	-10.9	15.5	19.0	18.8	0.18	108.292		
200.0	200.0	200.0	200.0	0.3	0.3	125.14	-10.9	15.5	19.0	18.4	0.62	30.384	CC, ES	
300.0	300.0	299.8	299.8	0.5	0.5	126.82	-10.6	16.1	20.1	19.0	1.09	18.386		
400.0	399.8	399.2	399.1	0.8	0.8	127.49	-7.8	20.4	25.9	24.2	1.61	16.066	SF	
500.0	499.1	498.0	497.3	1.0	1.0	135.91	-2.3	29.1	37.1	34.9	2.21	16.781		
600.0	597.8	595.3	593.4	1.4	1.3	139.33	5.8	41.8	55.4	52.5	2.87	19.268		
700.0	695.7	690.4	686.5	1.7	1.7	137.52	16.2	58.2	80.2	76.7	3.51	22.844		
800.0	793.6	786.4	779.8	2.1	2.1	134.14	28.2	77.0	107.3	103.2	4.15	25.869		
900.0	891.5	882.5	873.3	2.6	2.5	132.12	40.2	95.9	134.6	129.8	4.82	27.920		
1,000.0	989.3	978.6	966.8	3.0	3.0	130.77	52.2	114.8	162.0	156.5	5.52	29.357		
1,100.0	1,087.2	1,074.7	1,060.2	3.4	3.4	129.82	64.2	133.7	189.5	183.3	6.23	30.409		

CC - Min centre to center distance or convergent point, SF - min separation factor, ES - min ellipse separation

Cathedral Energy Services

Anticollision Report

Company:	Caerus Oil & Gas (NAD 27)	Local Co-ordinate Reference:	Well PUCKETT 41C-2
Project:	Garfield County, CO	TVD Reference:	KB=22' @ 8499.0usft
Reference Site:	S2-T7S-R97W (Puckett Pad)	MD Reference:	KB=22' @ 8499.0usft
Site Error:	0.0usft	North Reference:	True
Reference Well:	PUCKETT 41C-2	Survey Calculation Method:	Minimum Curvature
Well Error:	0.0usft	Output errors are at	2.00 sigma
Reference Wellbore	DD	Database:	USA EDM 5000 Multi Users DB
Reference Design:	Plan #1	Offset TVD Reference:	Offset Datum

Offset Design													Offset Site Error:	0.0 usft
S2-T7S-R97W (Puckett Pad) - PUCKETT 12B-1 - DD - Plan #1													Offset Well Error:	0.0 usft
Survey Program: 0-ISCSWA MWD														
Reference		Offset		Semi Major Axis			Distance							
Measured Depth (usft)	Vertical Depth (usft)	Measured Depth (usft)	Vertical Depth (usft)	Reference (usft)	Offset (usft)	Highside Toolface (°)	Offset Wellbore Centre +N/-S (usft)	+E/-W (usft)	Between Centres (usft)	Between Ellipses (usft)	Total Uncertainty Axis	Separation Factor	Warning	
0.0	0.0	0.0	0.0	0.0	0.0	134.35	-18.2	18.6	26.1					
100.0	100.0	100.0	100.0	0.1	0.1	134.35	-18.2	18.6	26.1	25.9	0.18	148.606		
200.0	200.0	200.0	200.0	0.3	0.3	134.35	-18.2	18.6	26.1	25.4	0.62	41.695 CC, ES		
300.0	300.0	300.0	300.0	0.5	0.5	136.55	-18.2	18.6	27.1	26.0	1.10	24.550		
400.0	399.8	399.1	399.0	0.8	0.8	140.26	-17.6	21.1	33.2	31.5	1.65	20.151 SF		
500.0	499.1	497.4	497.1	1.0	1.0	150.14	-15.6	28.5	45.8	43.6	2.25	20.344		
600.0	597.8	594.0	592.8	1.4	1.2	153.90	-12.5	40.5	65.9	63.0	2.90	22.750		
700.0	695.7	688.0	685.3	1.7	1.6	151.87	-8.2	56.6	93.1	89.6	3.48	26.775		
800.0	793.6	783.4	778.8	2.1	1.9	148.56	-3.3	75.2	122.5	118.5	4.02	30.454		
900.0	891.5	878.8	872.2	2.6	2.3	146.53	1.5	93.7	152.1	147.5	4.60	33.073		
1,000.0	989.3	974.2	965.7	3.0	2.7	145.16	6.4	112.3	181.9	176.7	5.20	34.955		

CC - Min centre to center distance or convergent point, SF - min separation factor, ES - min ellipse separation

Cathedral Energy Services

Anticollision Report

Company:	Caerus Oil & Gas (NAD 27)	Local Co-ordinate Reference:	Well PUCKETT 41C-2
Project:	Garfield County, CO	TVD Reference:	KB=22' @ 8499.0usft
Reference Site:	S2-T7S-R97W (Puckett Pad)	MD Reference:	KB=22' @ 8499.0usft
Site Error:	0.0usft	North Reference:	True
Reference Well:	PUCKETT 41C-2	Survey Calculation Method:	Minimum Curvature
Well Error:	0.0usft	Output errors are at	2.00 sigma
Reference Wellbore	DD	Database:	USA EDM 5000 Multi Users DB
Reference Design:	Plan #1	Offset TVD Reference:	Offset Datum

Offset Design													Offset Site Error:	0.0 usft			
Survey Program: 0-ISWWSA MWD													Offset Well Error:	0.0 usft			
Reference: S2-T7S-R97W (Puckett Pad) - PUCKETT 12C-1 - DD - Plan #1																	
Reference				Offset				Semi Major Axis				Distance					
Measured Depth (usft)	Vertical Depth (usft)	Measured Depth (usft)	Vertical Depth (usft)	Reference (usft)	Offset (usft)	Highside Toolface (°)	Offset Wellbore Centre +N/-S (usft)	+E/-W (usft)	Between Centres (usft)	Between Ellipses (usft)	Total Uncertainty Axis	Separation Factor	Warning				
0.0	0.0	0.0	0.0	0.0	0.0	138.06	-25.1	22.6	33.8								
100.0	100.0	100.0	100.0	0.1	0.1	138.06	-25.1	22.6	33.8	33.6	0.18	192.723					
200.0	200.0	200.0	200.0	0.3	0.3	138.06	-25.1	22.6	33.8	33.2	0.62	54.073	CC, ES				
300.0	300.0	300.0	300.0	0.5	0.5	139.65	-25.1	22.6	34.9	33.8	1.11	31.525					
400.0	399.8	399.1	399.1	0.8	0.8	144.85	-25.1	23.2	40.5	38.8	1.66	24.388					
500.0	499.1	496.9	496.7	1.0	1.0	157.12	-25.3	28.2	53.4	51.2	2.26	23.619	SF				
600.0	597.8	592.7	592.1	1.4	1.2	162.54	-25.6	38.0	74.4	71.5	2.90	25.700					
700.0	695.7	685.7	684.0	1.7	1.5	161.35	-25.9	52.0	102.9	99.5	3.44	29.891					
800.0	793.6	778.7	775.2	2.1	1.8	158.03	-26.4	69.8	134.8	130.9	3.94	34.198					
900.0	891.5	873.1	867.8	2.6	2.2	155.82	-26.9	88.2	167.3	162.9	4.46	37.514					
1,000.0	989.3	967.5	960.4	3.0	2.5	154.34	-27.4	106.7	200.0	195.0	5.00	39.972					

CC - Min centre to center distance or convergent point, SF - min separation factor, ES - min ellipse separation

Cathedral Energy Services

Anticollision Report

Company:	Caerus Oil & Gas (NAD 27)	Local Co-ordinate Reference:	Well PUCKETT 41C-2
Project:	Garfield County, CO	TVD Reference:	KB=22' @ 8499.0usft
Reference Site:	S2-T7S-R97W (Puckett Pad)	MD Reference:	KB=22' @ 8499.0usft
Site Error:	0.0usft	North Reference:	True
Reference Well:	PUCKETT 41C-2	Survey Calculation Method:	Minimum Curvature
Well Error:	0.0usft	Output errors are at	2.00 sigma
Reference Wellbore	DD	Database:	USA EDM 5000 Multi Users DB
Reference Design:	Plan #1	Offset TVD Reference:	Offset Datum

Offset Design													Offset Site Error:	0.0 usft	
Survey Program: 0-ISWWSA MWD													Offset Well Error:		0.0 usft
Reference		Offset		Semi Major Axis			Distance						Warning		
Measured Depth (usft)	Vertical Depth (usft)	Measured Depth (usft)	Vertical Depth (usft)	Reference (usft)	Offset (usft)	Highside Toolface (°)	Offset Wellbore Centre +N/-S (usft)	+E/-W (usft)	Between Centres (usft)	Between Ellipses (usft)	Total Uncertainty Axis	Separation Factor			
0.0	0.0	0.0	0.0	0.0	0.0	141.61	-32.4	25.7	41.4						
100.0	100.0	100.0	100.0	0.1	0.1	141.61	-32.4	25.7	41.4	41.2	0.18	235.919			
200.0	200.0	200.0	200.0	0.3	0.3	141.61	-32.4	25.7	41.4	40.7	0.62	66.193	CC, ES		
300.0	300.0	300.0	300.0	0.5	0.5	142.82	-32.4	25.7	42.5	41.4	1.11	38.314			
400.0	399.8	397.8	397.7	0.8	0.7	145.51	-33.2	28.1	49.9	48.2	1.66	30.050			
500.0	499.1	494.2	493.8	1.0	1.0	156.89	-35.5	35.1	65.9	63.6	2.28	28.907	SF		
600.0	597.8	587.9	586.9	1.4	1.2	163.17	-39.2	46.3	90.8	87.9	2.93	31.026			
700.0	695.7	678.2	675.7	1.7	1.5	163.28	-44.1	61.1	123.8	120.3	3.48	35.611			
800.0	793.6	771.6	767.3	2.1	1.9	161.40	-49.8	78.5	159.3	155.3	3.95	40.343			
900.0	891.5	865.0	858.9	2.6	2.2	160.21	-55.6	95.9	194.8	190.4	4.43	43.963			

CC - Min centre to center distance or convergent point, SF - min separation factor, ES - min ellipse separation

Cathedral Energy Services

Anticollision Report

Company:	Caerus Oil & Gas (NAD 27)	Local Co-ordinate Reference:	Well PUCKETT 41C-2
Project:	Garfield County, CO	TVD Reference:	KB=22' @ 8499.0usft
Reference Site:	S2-T7S-R97W (Puckett Pad)	MD Reference:	KB=22' @ 8499.0usft
Site Error:	0.0usft	North Reference:	True
Reference Well:	PUCKETT 41C-2	Survey Calculation Method:	Minimum Curvature
Well Error:	0.0usft	Output errors are at	2.00 sigma
Reference Wellbore	DD	Database:	USA EDM 5000 Multi Users DB
Reference Design:	Plan #1	Offset TVD Reference:	Offset Datum

Offset Design													Offset Site Error:	0.0 usft
S2-T7S-R97W (Puckett Pad) - PUCKETT 13A-1 - DD - Plan #1													Offset Well Error:	0.0 usft
Survey Program: 0-ISCSWA MWD														
Reference		Offset		Semi Major Axis			Distance							
Measured Depth (usft)	Vertical Depth (usft)	Measured Depth (usft)	Vertical Depth (usft)	Reference (usft)	Offset (usft)	Highside Toolface (°)	Offset Wellbore Centre +N/-S (usft)	+E/-W (usft)	Between Centres (usft)	Between Ellipses (usft)	Total Uncertainty Axis	Separation Factor	Warning	
0.0	0.0	0.0	0.0	0.0	0.0	144.54	-40.4	28.8	49.6					
100.0	100.0	100.0	100.0	0.1	0.1	144.54	-40.4	28.8	49.6	49.5	0.18	283.114		
200.0	200.0	200.0	200.0	0.3	0.3	144.54	-40.4	28.8	49.6	49.0	0.62	79.435 CC		
200.2	200.2	200.2	200.2	0.3	0.3	144.54	-40.4	28.8	49.6	49.0	0.63	79.136 ES		
300.0	300.0	298.8	298.8	0.5	0.5	145.12	-40.7	29.4	51.4	50.3	1.11	46.492		
400.0	399.8	395.8	395.7	0.8	0.7	146.16	-42.9	33.8	61.3	59.6	1.67	36.774		
500.0	499.1	491.0	490.4	1.0	1.0	157.05	-47.3	42.4	80.0	77.7	2.30	34.780 SF		
600.0	597.8	583.1	581.4	1.4	1.3	163.76	-53.5	54.7	107.9	105.0	2.96	36.495		
700.0	695.7	671.5	668.1	1.7	1.6	164.49	-61.3	70.1	144.1	140.5	3.51	41.014		
800.0	793.6	763.7	758.1	2.1	2.0	163.10	-70.2	87.9	182.5	178.5	3.97	45.910		

Cathedral Energy Services

Anticollision Report

Company:	Caerus Oil & Gas (NAD 27)	Local Co-ordinate Reference:	Well PUCKETT 41C-2
Project:	Garfield County, CO	TVD Reference:	KB=22' @ 8499.0usft
Reference Site:	S2-T7S-R97W (Puckett Pad)	MD Reference:	KB=22' @ 8499.0usft
Site Error:	0.0usft	North Reference:	True
Reference Well:	PUCKETT 41C-2	Survey Calculation Method:	Minimum Curvature
Well Error:	0.0usft	Output errors are at	2.00 sigma
Reference Wellbore	DD	Database:	USA EDM 5000 Multi Users DB
Reference Design:	Plan #1	Offset TVD Reference:	Offset Datum

Offset Design													Offset Site Error:	0.0 usft
Survey Program: 0-ISCSWA MWD													Offset Well Error:	0.0 usft
Reference		Offset		Semi Major Axis			Distance						Warning	
Measured Depth (usft)	Vertical Depth (usft)	Measured Depth (usft)	Vertical Depth (usft)	Reference (usft)	Offset (usft)	Highside Toolface (°)	Offset Wellbore Centre +N/-S (usft)	+E/-W (usft)	Between Centres (usft)	Between Ellipses (usft)	Total Uncertainty Axis	Separation Factor		
0.0	0.0	0.0	0.0	0.0	0.0	146.03	-47.3	31.9	57.1					
100.0	100.0	100.0	100.0	0.1	0.1	146.03	-47.3	31.9	57.1	56.9	0.18	325.651		
200.0	200.0	200.0	200.0	0.3	0.3	146.03	-47.3	31.9	57.1	56.5	0.62	91.370	CC, ES	
300.0	300.0	297.2	297.2	0.5	0.5	145.73	-48.6	34.0	60.6	59.5	1.10	54.873		
400.0	399.8	393.4	393.1	0.8	0.7	145.89	-52.4	40.3	72.9	71.2	1.69	43.223		
500.0	499.1	487.4	486.3	1.0	1.0	156.51	-58.4	50.4	94.1	91.8	2.33	40.393	SF	
600.0	597.8	578.0	575.5	1.4	1.3	163.48	-66.4	63.9	124.6	121.6	2.99	41.657		
700.0	695.7	664.2	659.6	1.7	1.7	164.58	-76.1	80.1	163.3	159.7	3.54	46.104		

CC - Min centre to center distance or convergent point, SF - min separation factor, ES - min ellipse separation

Cathedral Energy Services

Anticollision Report

Company:	Caerus Oil & Gas (NAD 27)	Local Co-ordinate Reference:	Well PUCKETT 41C-2
Project:	Garfield County, CO	TVD Reference:	KB=22' @ 8499.0usft
Reference Site:	S2-T7S-R97W (Puckett Pad)	MD Reference:	KB=22' @ 8499.0usft
Site Error:	0.0usft	North Reference:	True
Reference Well:	PUCKETT 41C-2	Survey Calculation Method:	Minimum Curvature
Well Error:	0.0usft	Output errors are at	2.00 sigma
Reference Wellbore	DD	Database:	USA EDM 5000 Multi Users DB
Reference Design:	Plan #1	Offset TVD Reference:	Offset Datum

Offset Design													Offset Site Error:	0.0 usft	
Survey Program: 0-ISCSWA MWD													Offset Well Error:		0.0 usft
Reference		Offset		Semi Major Axis			Distance						Warning		
Measured Depth (usft)	Vertical Depth (usft)	Measured Depth (usft)	Vertical Depth (usft)	Reference (usft)	Offset (usft)	Highside Toolface (°)	Offset Wellbore Centre +N/-S (usft)	+E/-W (usft)	Between Centres (usft)	Between Ellipses (usft)	Total Uncertainty Axis	Separation Factor			
0.0	0.0	0.0	0.0	0.0	0.0	155.48	-51.4	23.4	56.4						
100.0	100.0	100.0	100.0	0.1	0.1	155.48	-51.4	23.4	56.4	56.3	0.18	321.980			
155.6	155.6	155.6	155.6	0.2	0.2	155.48	-51.4	23.4	56.4	56.0	0.43	132.796 CC			
200.0	200.0	199.4	199.4	0.3	0.3	155.41	-51.5	23.6	56.6	56.0	0.62	91.460 ES			
300.0	300.0	296.5	296.4	0.5	0.5	154.38	-53.8	26.4	61.4	60.3	1.11	55.242			
400.0	399.8	392.4	392.0	0.8	0.8	153.50	-59.2	33.0	75.3	73.5	1.72	43.695			
500.0	499.1	485.9	484.5	1.0	1.0	163.22	-67.3	43.0	98.3	96.0	2.37	41.438 SF			
600.0	597.8	575.5	572.6	1.4	1.4	169.60	-77.8	55.8	130.6	127.5	3.03	43.105			
700.0	695.7	660.6	655.4	1.7	1.8	170.31	-90.2	71.0	171.0	167.4	3.58	47.822			

CC - Min centre to center distance or convergent point, SF - min separation factor, ES - min ellipse separation

Cathedral Energy Services

Anticollision Report

Company:	Caerus Oil & Gas (NAD 27)	Local Co-ordinate Reference:	Well PUCKETT 41C-2
Project:	Garfield County, CO	TVD Reference:	KB=22' @ 8499.0usft
Reference Site:	S2-T7S-R97W (Puckett Pad)	MD Reference:	KB=22' @ 8499.0usft
Site Error:	0.0usft	North Reference:	True
Reference Well:	PUCKETT 41C-2	Survey Calculation Method:	Minimum Curvature
Well Error:	0.0usft	Output errors are at	2.00 sigma
Reference Wellbore	DD	Database:	USA EDM 5000 Multi Users DB
Reference Design:	Plan #1	Offset TVD Reference:	Offset Datum

Offset Design													Offset Site Error:	0.0 usft
S2-T7S-R97W (Puckett Pad) - PUCKETT 41A-2 - DD - Plan #1													Offset Well Error:	0.0 usft
Survey Program: 0-ISCSWA MWD														
Reference		Offset		Semi Major Axis			Distance						Warning	
Measured Depth (usft)	Vertical Depth (usft)	Measured Depth (usft)	Vertical Depth (usft)	Reference (usft)	Offset (usft)	Highside Toolface (°)	Offset Wellbore Centre +N/-S (usft)	+E/-W (usft)	Between Centres (usft)	Between Ellipses (usft)	Total Uncertainty Axis	Separation Factor		
0.0	0.0	0.0	0.0	0.0	0.0	66.73	4.0	9.3	10.1					
100.0	100.0	100.0	100.0	0.1	0.1	66.73	4.0	9.3	10.1	10.0	0.18	57.841		
200.0	200.0	200.0	200.0	0.3	0.3	66.73	4.0	9.3	10.1	9.5	0.62	16.229 CC, ES		
300.0	300.0	299.6	299.6	0.5	0.5	63.95	6.4	10.2	11.4	10.3	1.08	10.471		
400.0	399.8	399.1	398.7	0.8	0.8	65.70	13.7	12.9	14.1	12.5	1.58	8.953		
500.0	499.1	499.1	498.0	1.0	1.1	78.61	25.8	15.1	17.3	15.2	2.09	8.297		
600.0	597.8	599.2	596.7	1.4	1.4	87.53	42.3	14.8	21.3	18.5	2.71	7.850		
700.0	695.7	699.3	694.5	1.7	1.8	88.61	63.3	11.7	25.8	22.3	3.46	7.439		
800.0	793.6	799.2	791.0	2.1	2.2	78.85	88.5	6.1	30.1	25.8	4.27	7.045 SF		
900.0	891.5	898.7	886.1	2.6	2.8	65.59	116.9	-1.5	35.9	30.8	5.03	7.134		
1,000.0	989.3	998.3	981.1	3.0	3.3	56.07	145.4	-9.2	43.1	37.4	5.70	7.554		
1,100.0	1,087.2	1,097.8	1,076.1	3.4	3.9	49.41	174.0	-16.9	51.1	44.8	6.34	8.072		
1,200.0	1,185.0	1,197.3	1,171.2	3.8	4.5	44.60	202.5	-24.6	59.7	52.8	6.95	8.592		
1,300.0	1,282.9	1,296.8	1,266.2	4.3	5.0	41.01	231.1	-32.3	68.6	61.0	7.55	9.078		
1,400.0	1,380.7	1,396.4	1,361.3	4.7	5.6	38.25	259.6	-40.0	77.6	69.5	8.16	9.520		
1,500.0	1,478.6	1,495.9	1,456.3	5.1	6.2	36.07	288.1	-47.7	86.9	78.1	8.76	9.918		
1,600.0	1,576.4	1,595.4	1,551.3	5.6	6.8	34.31	316.7	-55.4	96.2	86.8	9.36	10.274		
1,700.0	1,674.3	1,694.9	1,646.4	6.0	7.4	32.87	345.2	-63.1	105.6	95.6	9.97	10.592		
1,800.0	1,772.1	1,794.5	1,741.4	6.5	8.0	31.66	373.8	-70.8	115.0	104.4	10.57	10.878		
1,900.0	1,870.0	1,894.0	1,836.4	6.9	8.6	30.63	402.3	-78.5	124.5	113.3	11.18	11.136		
2,000.0	1,967.8	1,993.5	1,931.5	7.3	9.1	29.75	430.8	-86.2	134.0	122.2	11.79	11.368		
2,100.0	2,065.7	2,093.0	2,026.5	7.8	9.7	28.99	459.4	-93.9	143.6	131.2	12.40	11.579		
2,200.0	2,163.5	2,192.6	2,121.5	8.2	10.3	28.32	487.9	-101.6	153.1	140.1	13.01	11.771		
2,300.0	2,261.4	2,292.1	2,216.6	8.7	10.9	27.73	516.5	-109.3	162.7	149.1	13.62	11.946		
2,400.0	2,359.3	2,391.6	2,311.6	9.1	11.5	27.20	545.0	-117.0	172.3	158.1	14.23	12.107		
2,500.0	2,457.1	2,491.1	2,406.6	9.5	12.1	26.73	573.5	-124.7	182.0	167.1	14.85	12.255		
2,600.0	2,555.0	2,590.7	2,501.7	10.0	12.7	26.31	602.1	-132.4	191.6	176.1	15.46	12.391		

CC - Min centre to center distance or convergent point, SF - min separation factor, ES - min ellipse separation

Cathedral Energy Services

Anticollision Report

Company:	Caerus Oil & Gas (NAD 27)	Local Co-ordinate Reference:	Well PUCKETT 41C-2
Project:	Garfield County, CO	TVD Reference:	KB=22' @ 8499.0usft
Reference Site:	S2-T7S-R97W (Puckett Pad)	MD Reference:	KB=22' @ 8499.0usft
Site Error:	0.0usft	North Reference:	True
Reference Well:	PUCKETT 41C-2	Survey Calculation Method:	Minimum Curvature
Well Error:	0.0usft	Output errors are at	2.00 sigma
Reference Wellbore	DD	Database:	USA EDM 5000 Multi Users DB
Reference Design:	Plan #1	Offset TVD Reference:	Offset Datum

Offset Design													Offset Site Error:	0.0 usft
S2-T7S-R97W (Puckett Pad) - PUCKETT 41B-2 - DD - Plan #1													Offset Well Error:	0.0 usft
Survey Program: 0-ISCSWA MWD														
Reference		Offset		Semi Major Axis			Distance							
Measured Depth (usft)	Vertical Depth (usft)	Measured Depth (usft)	Vertical Depth (usft)	Reference (usft)	Offset (usft)	Highside Toolface (°)	Offset Wellbore Centre +N/-S (usft)	+E/-W (usft)	Between Centres (usft)	Between Ellipses (usft)	Total Uncertainty Axis	Separation Factor	Warning	
0.0	0.0	0.0	0.0	0.0	0.0	25.41	11.3	5.4	12.5					
100.0	100.0	100.0	100.0	0.1	0.1	25.41	11.3	5.4	12.5	12.3	0.18	71.301		
144.8	144.8	144.8	144.8	0.2	0.2	25.41	11.3	5.4	12.5	12.1	0.38	33.194 CC, ES		
200.0	200.0	199.8	199.8	0.3	0.3	24.19	11.7	5.3	12.8	12.2	0.63	20.485		
300.0	300.0	299.2	299.0	0.5	0.6	15.16	16.2	4.0	15.3	14.1	1.13	13.530		
400.0	399.8	398.3	397.7	0.8	0.8	4.33	25.6	1.3	17.7	16.0	1.72	10.319		
500.0	499.1	497.2	495.5	1.0	1.1	5.60	39.9	-2.7	20.8	18.5	2.30	9.072		
600.0	597.8	596.0	592.2	1.4	1.5	11.30	59.0	-8.1	24.9	22.1	2.89	8.640 SF		
700.0	695.7	694.9	688.0	1.7	2.0	15.40	82.7	-14.7	30.1	26.7	3.42	8.803		
800.0	793.6	794.7	784.4	2.1	2.5	16.76	107.7	-21.8	36.1	32.2	3.93	9.184		
900.0	891.5	894.5	880.7	2.6	3.0	17.73	132.8	-28.9	42.1	37.6	4.47	9.416		
1,000.0	989.3	994.4	977.1	3.0	3.5	18.46	157.9	-35.9	48.1	43.0	5.03	9.559		
1,100.0	1,087.2	1,094.2	1,073.5	3.4	4.0	19.03	182.9	-43.0	54.1	48.5	5.60	9.652		
1,200.0	1,185.0	1,194.0	1,169.8	3.8	4.5	19.49	208.0	-50.0	60.1	53.9	6.19	9.705		
1,300.0	1,282.9	1,293.8	1,266.2	4.3	5.1	19.86	233.0	-57.1	66.1	59.3	6.78	9.739		
1,400.0	1,380.7	1,393.6	1,362.6	4.7	5.6	20.17	258.1	-64.2	72.1	64.7	7.38	9.760		
1,500.0	1,478.6	1,493.5	1,458.9	5.1	6.1	20.43	283.1	-71.2	78.1	70.1	7.99	9.772		
1,600.0	1,576.4	1,593.3	1,555.3	5.6	6.6	20.66	308.2	-78.3	84.1	75.5	8.60	9.778		
1,700.0	1,674.3	1,693.1	1,651.7	6.0	7.2	20.85	333.2	-85.3	90.1	80.9	9.21	9.780		
1,800.0	1,772.1	1,792.9	1,748.0	6.5	7.7	21.02	358.3	-92.4	96.1	86.3	9.83	9.779		
1,900.0	1,870.0	1,892.7	1,844.4	6.9	8.2	21.17	383.3	-99.4	102.1	91.7	10.44	9.776		
2,000.0	1,967.8	1,992.6	1,940.8	7.3	8.7	21.31	408.4	-106.5	108.1	97.0	11.06	9.773		
2,100.0	2,065.7	2,092.4	2,037.1	7.8	9.3	21.43	433.4	-113.6	114.1	102.4	11.68	9.768		
2,200.0	2,163.5	2,192.2	2,133.5	8.2	9.8	21.54	458.5	-120.6	120.1	107.8	12.30	9.764		
2,300.0	2,261.4	2,292.0	2,229.9	8.7	10.3	21.63	483.6	-127.7	126.1	113.2	12.93	9.759		
2,400.0	2,359.3	2,391.8	2,326.2	9.1	10.9	21.72	508.6	-134.7	132.1	118.6	13.55	9.754		
2,500.0	2,457.1	2,491.7	2,422.6	9.5	11.4	21.80	533.7	-141.8	138.2	124.0	14.17	9.749		
2,600.0	2,555.0	2,591.5	2,519.0	10.0	11.9	21.88	558.7	-148.8	144.2	129.4	14.80	9.743		
2,700.0	2,652.8	2,691.3	2,615.3	10.4	12.5	21.95	583.8	-155.9	150.2	134.8	15.42	9.739		
2,800.0	2,750.7	2,791.1	2,711.7	10.9	13.0	22.01	608.8	-163.0	156.2	140.1	16.05	9.734		
2,900.0	2,848.5	2,890.9	2,808.1	11.3	13.5	22.07	633.9	-170.0	162.2	145.5	16.67	9.729		
3,000.0	2,946.4	2,990.7	2,904.4	11.7	14.1	22.12	658.9	-177.1	168.2	150.9	17.30	9.725		
3,100.0	3,044.2	3,090.6	3,000.8	12.2	14.6	22.17	684.0	-184.1	174.2	156.3	17.92	9.720		
3,200.0	3,142.1	3,190.4	3,097.2	12.6	15.1	22.22	709.0	-191.2	180.2	161.7	18.55	9.716		
3,300.0	3,239.9	3,290.2	3,193.5	13.1	15.6	22.26	734.1	-198.3	186.2	167.1	19.18	9.712		
3,400.0	3,337.8	3,390.0	3,289.9	13.5	16.2	22.30	759.1	-205.3	192.3	172.5	19.80	9.709		
3,500.0	3,435.6	3,489.8	3,386.2	13.9	16.7	22.34	784.2	-212.4	198.3	177.8	20.43	9.705		

CC - Min centre to center distance or convergent point, SF - min separation factor, ES - min ellipse separation

Cathedral Energy Services

Anticollision Report

Company:	Caerus Oil & Gas (NAD 27)	Local Co-ordinate Reference:	Well PUCKETT 41C-2
Project:	Garfield County, CO	TVD Reference:	KB=22' @ 8499.0usft
Reference Site:	S2-T7S-R97W (Puckett Pad)	MD Reference:	KB=22' @ 8499.0usft
Site Error:	0.0usft	North Reference:	True
Reference Well:	PUCKETT 41C-2	Survey Calculation Method:	Minimum Curvature
Well Error:	0.0usft	Output errors are at	2.00 sigma
Reference Wellbore	DD	Database:	USA EDM 5000 Multi Users DB
Reference Design:	Plan #1	Offset TVD Reference:	Offset Datum

Offset Design													Offset Site Error:	0.0 usft	
Survey Program: 0-ISCSWA MWD													Offset Well Error:	0.0 usft	
Reference				Offset			Semi Major Axis			Distance			Total Uncertainty Axis	Separation Factor	Warning
Measured Depth (usft)	Vertical Depth (usft)	Measured Depth (usft)	Vertical Depth (usft)	Reference (usft)	Offset (usft)	Highside Toolface (°)	Offset Wellbore Centre +N/-S (usft)	+E/-W (usft)	Between Centres (usft)	Between Ellipses (usft)					
0.0	0.0	0.0	0.0	0.0	0.0	-24.94	7.3	-3.4	8.0	7.9	0.18	45.824			
100.0	100.0	100.0	100.0	0.1	0.1	-24.94	7.3	-3.4	8.0	7.6	0.43	18.900 CC			
155.6	155.6	155.6	155.6	0.2	0.2	-24.94	7.3	-3.4	8.0	7.6	0.63	13.111 ES			
200.0	200.0	199.9	199.9	0.3	0.3	-24.97	7.4	-3.5	8.2	7.6	1.12	9.666			
300.0	300.0	299.4	299.3	0.5	0.5	-28.80	10.9	-5.2	10.8	9.7	1.65	8.753			
400.0	399.8	398.6	398.1	0.8	0.8	-39.83	19.0	-9.2	14.4	12.8	2.21	8.663			
500.0	499.1	497.8	496.3	1.0	1.1	-39.21	31.6	-15.5	19.2	17.0	2.83	7.378			
600.0	597.8	597.7	594.9	1.4	1.4	-39.03	45.8	-22.6	20.9	18.0	3.45	5.468			
700.0	695.7	697.6	693.6	1.7	1.8	-48.69	60.0	-29.8	18.8	15.4	4.18	4.170			
800.0	793.6	797.5	792.2	2.1	2.1	-64.12	74.3	-36.9	17.4	13.3	4.60	3.748			
849.4	841.9	846.8	840.8	2.3	2.3	-72.36	81.3	-40.4	17.3	12.7	5.03	3.466			
900.0	891.5	897.4	890.8	2.6	2.5	-80.81	88.5	-44.0	17.4	12.4	5.85	3.226 SF			
1,000.0	989.3	997.2	989.3	3.0	2.9	-96.21	102.7	-51.1	18.9	13.0	6.55	3.270			
1,100.0	1,087.2	1,097.1	1,087.9	3.4	3.2	-108.70	116.9	-58.2	21.4	14.9	7.17	3.457			
1,200.0	1,185.0	1,197.0	1,186.5	3.8	3.6	-118.18	131.2	-65.3	24.8	17.6	7.73	3.705			
1,300.0	1,282.9	1,296.9	1,285.1	4.3	4.0	-125.27	145.4	-72.4	28.6	20.9	8.27	3.971			
1,400.0	1,380.7	1,396.7	1,383.7	4.7	4.3	-130.61	159.6	-79.6	32.8	24.6	8.80	4.233			
1,500.0	1,478.6	1,496.6	1,482.3	5.1	4.7	-134.72	173.9	-86.7	37.2	28.4	9.33	4.481			
1,600.0	1,576.4	1,596.5	1,580.9	5.6	5.1	-137.95	188.1	-93.8	41.8	32.5	9.86	4.713			
1,700.0	1,674.3	1,696.3	1,679.5	6.0	5.4	-140.53	202.3	-100.9	46.5	36.6	10.39	4.928			
1,800.0	1,772.1	1,796.2	1,778.1	6.5	5.8	-142.64	216.5	-108.0	51.2	40.8	10.93	5.125			
1,900.0	1,870.0	1,896.1	1,876.7	6.9	6.2	-144.39	230.8	-115.1	56.0	45.1	11.47	5.306			
2,000.0	1,967.8	1,996.0	1,975.3	7.3	6.5	-145.86	245.0	-122.2	60.8	49.4	12.01	5.473			
2,100.0	2,065.7	2,095.8	2,073.9	7.8	6.9	-147.12	259.2	-129.4	65.7	53.7	12.55	5.626			
2,200.0	2,163.5	2,195.7	2,172.5	8.2	7.3	-148.20	273.5	-136.5	70.6	58.1	13.10	5.767			
2,300.0	2,261.4	2,295.6	2,271.1	8.7	7.6	-149.14	287.7	-143.6	75.6	62.5	13.65	5.898			
2,400.0	2,359.3	2,395.4	2,369.7	9.1	8.0	-149.97	301.9	-150.7	80.5	66.9	14.20	6.019			
2,500.0	2,457.1	2,495.3	2,468.3	9.5	8.4	-150.70	316.1	-157.8	85.5	71.3	14.75	6.131			
2,600.0	2,555.0	2,595.2	2,566.9	10.0	8.7	-151.34	330.4	-164.9	90.4	75.7	15.30	6.235			
2,700.0	2,652.8	2,695.1	2,665.5	10.4	9.1	-151.93	344.6	-172.0	95.4	80.1	15.86	6.332			
2,800.0	2,750.7	2,794.9	2,764.1	10.9	9.5	-152.45	358.8	-179.1	100.4	84.5	16.41	6.422			
2,900.0	2,848.5	2,894.8	2,862.7	11.3	9.8	-152.92	373.1	-186.3	105.4	89.0	16.97	6.507			
3,000.0	2,946.4	2,994.7	2,961.3	11.7	10.2	-153.36	387.3	-193.4	110.4	93.4	17.52	6.587			
3,100.0	3,044.2	3,094.5	3,059.9	12.2	10.6	-153.75	401.5	-200.5	115.4	97.9	18.08	6.661			
3,200.0	3,142.1	3,194.4	3,158.5	12.6	10.9	-154.11	415.7	-207.6	120.4	102.4	18.64	6.731			
3,300.0	3,239.9	3,294.3	3,257.1	13.1	11.3	-154.44	430.0	-214.7	125.5	106.8	19.20	6.798			
3,400.0	3,337.8	3,394.2	3,355.7	13.5	11.7	-154.75	444.2	-221.8	130.5	111.3	19.75	6.860			
3,500.0	3,435.6	3,494.0	3,454.3	13.9	12.0	-155.03	458.4	-228.9	135.5	115.8	20.31	6.919			
3,600.0	3,533.5	3,593.9	3,552.9	14.4	12.4	-155.30	472.7	-236.1	140.5	120.2	20.87	6.975			
3,700.0	3,631.3	3,693.8	3,651.4	14.8	12.8	-155.54	486.9	-243.2	145.6	124.7	21.43	7.028			
3,800.0	3,729.2	3,793.6	3,750.0	15.3	13.1	-155.77	501.1	-250.3	150.6	129.2	21.99	7.078			
3,900.0	3,827.1	3,893.5	3,848.6	15.7	13.5	-155.99	515.3	-257.4	155.7	133.7	22.55	7.126			
4,000.0	3,924.9	3,993.4	3,947.2	16.1	13.9	-156.19	529.6	-264.5	160.7	138.1	23.11	7.172			
4,100.0	4,022.8	4,093.3	4,045.8	16.6	14.3	-156.37	543.8	-271.6	165.7	142.6	23.67	7.215			
4,200.0	4,120.6	4,193.1	4,144.4	17.0	14.6	-156.55	558.0	-278.7	170.8	147.1	24.23	7.256			
4,300.0	4,218.5	4,293.0	4,243.0	17.5	15.0	-156.72	572.3	-285.9	175.8	151.6	24.79	7.296			
4,400.0	4,316.3	4,392.9	4,341.6	17.9	15.4	-156.88	586.5	-293.0	180.9	156.1	25.35	7.334			
4,500.0	4,414.2	4,492.7	4,440.2	18.4	15.7	-157.03	600.7	-300.1	185.9	160.6	25.91	7.370			
4,600.0	4,512.0	4,592.6	4,538.8	18.8	16.1	-157.17	614.9	-307.2	191.0	165.1	26.47	7.405			
4,700.0	4,609.9	4,692.5	4,637.4	19.2	16.5	-157.30	629.2	-314.3	196.0	169.5					

CC - Min centre to center distance or convergent point, SF - min separation factor, ES - min ellipse separation

Cathedral Energy Services

Anticollision Report

Company:	Caerus Oil & Gas (NAD 27)	Local Co-ordinate Reference:	Well PUCKETT 41C-2
Project:	Garfield County, CO	TVD Reference:	KB=22' @ 8499.0usft
Reference Site:	S2-T7S-R97W (Puckett Pad)	MD Reference:	KB=22' @ 8499.0usft
Site Error:	0.0usft	North Reference:	True
Reference Well:	PUCKETT 41C-2	Survey Calculation Method:	Minimum Curvature
Well Error:	0.0usft	Output errors are at	2.00 sigma
Reference Wellbore	DD	Database:	USA EDM 5000 Multi Users DB
Reference Design:	Plan #1	Offset TVD Reference:	Offset Datum

Offset Design													Offset Site Error:	0.0 usft	
Survey Program: 0-ISCSWA MWD													Offset Well Error:	0.0 usft	
Reference				Offset			Semi Major Axis			Distance			Total Uncertainty Axis	Separation Factor	Warning
Measured Depth (usft)	Vertical Depth (usft)	Measured Depth (usft)	Vertical Depth (usft)	Reference (usft)	Offset (usft)	Highside Tooface (°)	Offset Wellbore Centre +N/-S (usft)	+E/-W (usft)	Between Centres (usft)	Between Ellipses (usft)					
0.0	0.0	0.0	0.0	0.0	0.0	158.82	-8.0	3.1	8.6						
100.0	100.0	100.0	100.0	0.1	0.1	158.82	-8.0	3.1	8.6	8.4	0.18	49.018			
200.0	200.0	200.0	200.0	0.3	0.3	158.82	-8.0	3.1	8.6	8.0	0.62	13.753 CC, ES			
300.0	300.0	300.1	300.1	0.5	0.5	162.17	-7.9	3.0	9.8	8.7	1.12	8.753			
400.0	399.8	400.5	400.5	0.8	0.8	177.03	-4.7	0.7	12.7	11.0	1.71	7.461 SF			
500.0	499.1	500.9	500.4	1.0	1.0	-156.43	2.7	-4.8	17.2	14.9	2.25	7.638			
600.0	597.8	600.8	599.5	1.4	1.3	-144.15	12.6	-12.0	23.4	20.6	2.80	8.360			
700.0	695.7	700.4	698.3	1.7	1.6	-146.08	22.4	-19.3	32.2	28.8	3.37	9.549			
800.0	793.6	799.9	797.1	2.1	1.9	-149.22	32.2	-26.5	41.4	37.5	3.90	10.616			
900.0	891.5	899.5	895.9	2.6	2.2	-151.22	42.1	-33.8	50.7	46.3	4.44	11.434			
1,000.0	989.3	999.0	994.7	3.0	2.5	-152.59	51.9	-41.0	60.1	55.1	4.98	12.070			
1,100.0	1,087.2	1,098.6	1,093.5	3.4	2.8	-153.59	61.7	-48.2	69.5	64.0	5.53	12.576			
1,200.0	1,185.0	1,198.1	1,192.3	3.8	3.1	-154.35	71.5	-55.5	78.9	72.8	6.08	12.985			
1,300.0	1,282.9	1,297.7	1,291.1	4.3	3.4	-154.95	81.4	-62.7	88.3	81.7	6.63	13.321			
1,400.0	1,380.7	1,397.2	1,389.9	4.7	3.7	-155.44	91.2	-69.9	97.7	90.6	7.19	13.601			
1,500.0	1,478.6	1,496.8	1,488.7	5.1	4.1	-155.84	101.0	-77.2	107.2	99.4	7.74	13.839			
1,600.0	1,576.4	1,596.3	1,587.5	5.6	4.4	-156.17	110.9	-84.4	116.6	108.3	8.30	14.042			
1,700.0	1,674.3	1,695.9	1,686.3	6.0	4.7	-156.46	120.7	-91.6	126.1	117.2	8.87	14.218			
1,800.0	1,772.1	1,795.4	1,785.1	6.5	5.0	-156.70	130.5	-98.9	135.5	126.1	9.43	14.372			
1,900.0	1,870.0	1,895.0	1,883.9	6.9	5.3	-156.91	140.3	-106.1	144.9	134.9	9.99	14.508			
2,000.0	1,967.8	1,994.5	1,982.7	7.3	5.6	-157.10	150.2	-113.3	154.4	143.8	10.55	14.628			
2,100.0	2,065.7	2,094.1	2,081.5	7.8	5.9	-157.27	160.0	-120.6	163.8	152.7	11.12	14.736			
2,200.0	2,163.5	2,193.6	2,180.4	8.2	6.3	-157.41	169.8	-127.8	173.3	161.6	11.68	14.833			
2,300.0	2,261.4	2,293.2	2,279.2	8.7	6.6	-157.55	179.6	-135.0	182.7	170.5	12.25	14.920			
2,400.0	2,359.3	2,392.7	2,378.0	9.1	6.9	-157.67	189.5	-142.3	192.2	179.4	12.81	15.000			

CC - Min centre to center distance or convergent point, SF - min separation factor, ES - min ellipse separation

Cathedral Energy Services

Anticollision Report

Company:	Caerus Oil & Gas (NAD 27)	Local Co-ordinate Reference:	Well PUCKETT 41C-2
Project:	Garfield County, CO	TVD Reference:	KB=22' @ 8499.0usft
Reference Site:	S2-T7S-R97W (Puckett Pad)	MD Reference:	KB=22' @ 8499.0usft
Site Error:	0.0usft	North Reference:	True
Reference Well:	PUCKETT 41C-2	Survey Calculation Method:	Minimum Curvature
Well Error:	0.0usft	Output errors are at	2.00 sigma
Reference Wellbore	DD	Database:	USA EDM 5000 Multi Users DB
Reference Design:	Plan #1	Offset TVD Reference:	Offset Datum

Offset Design													Offset Site Error:	0.0 usft
S2-T7S-R97W (Puckett Pad) - PUCKETT 42B-2 - DD - Plan #1													Offset Well Error:	0.0 usft
Survey Program: 0-ISCSWA MWD														
Reference		Offset		Semi Major Axis			Distance						Warning	
Measured Depth (usft)	Vertical Depth (usft)	Measured Depth (usft)	Vertical Depth (usft)	Reference (usft)	Offset (usft)	Highside Toolface (°)	Offset Wellbore Centre +N/-S (usft)	+E/-W (usft)	Between Centres (usft)	Between Ellipses (usft)	Total Uncertainty Axis	Separation Factor		
0.0	0.0	0.0	0.0	0.0	0.0	157.42	-14.9	6.2	16.2					
100.0	100.0	100.0	100.0	0.1	0.1	157.42	-14.9	6.2	16.2	16.0	0.18	92.252		
200.0	200.0	200.0	200.0	0.3	0.3	157.42	-14.9	6.2	16.2	15.5	0.62	25.884	CC, ES	
300.0	300.0	300.0	300.0	0.5	0.5	159.25	-14.9	6.2	17.5	16.4	1.12	15.621		
400.0	399.8	400.4	400.4	0.8	0.8	167.22	-14.1	5.0	22.6	20.9	1.71	13.277		
500.0	499.1	500.9	500.7	1.0	1.0	-170.53	-10.2	-0.4	29.7	27.4	2.27	13.072	SF	
600.0	597.8	600.4	599.7	1.4	1.2	-157.66	-5.0	-7.6	40.0	37.1	2.84	14.088		
700.0	695.7	699.4	698.4	1.7	1.5	-155.82	0.2	-14.9	53.6	50.2	3.36	15.921		
800.0	793.6	798.4	797.0	2.1	1.8	-156.56	5.4	-22.1	67.6	63.7	3.86	17.524		
900.0	891.5	897.4	895.6	2.6	2.0	-157.05	10.7	-29.4	81.6	77.3	4.37	18.688		
1,000.0	989.3	996.5	994.2	3.0	2.3	-157.39	15.9	-36.6	95.7	90.8	4.89	19.558		
1,100.0	1,087.2	1,095.5	1,092.8	3.4	2.6	-157.65	21.1	-43.9	109.7	104.3	5.42	20.226		
1,200.0	1,185.0	1,194.5	1,191.4	3.8	2.8	-157.84	26.3	-51.1	123.7	117.8	5.96	20.753		
1,300.0	1,282.9	1,293.5	1,290.0	4.3	3.1	-158.00	31.5	-58.4	137.8	131.3	6.51	21.175		
1,400.0	1,380.7	1,392.5	1,388.6	4.7	3.4	-158.13	36.7	-65.6	151.8	144.8	7.05	21.521		
1,500.0	1,478.6	1,491.5	1,487.2	5.1	3.7	-158.24	41.9	-72.9	165.9	158.3	7.61	21.809		
1,600.0	1,576.4	1,590.5	1,585.8	5.6	3.9	-158.33	47.1	-80.1	179.9	171.8	8.16	22.053		
1,700.0	1,674.3	1,689.5	1,684.4	6.0	4.2	-158.40	52.3	-87.4	194.0	185.2	8.71	22.260		

CC - Min centre to center distance or convergent point, SF - min separation factor, ES - min ellipse separation

Cathedral Energy Services

Anticollision Report

Company:	Caerus Oil & Gas (NAD 27)	Local Co-ordinate Reference:	Well PUCKETT 41C-2
Project:	Garfield County, CO	TVD Reference:	KB=22' @ 8499.0usft
Reference Site:	S2-T7S-R97W (Puckett Pad)	MD Reference:	KB=22' @ 8499.0usft
Site Error:	0.0usft	North Reference:	True
Reference Well:	PUCKETT 41C-2	Survey Calculation Method:	Minimum Curvature
Well Error:	0.0usft	Output errors are at	2.00 sigma
Reference Wellbore	DD	Database:	USA EDM 5000 Multi Users DB
Reference Design:	Plan #1	Offset TVD Reference:	Offset Datum

Offset Design													Offset Site Error:	0.0 usft
S2-T7S-R97W (Puckett Pad) - PUCKETT 42C-2 - DD - Plan #1													Offset Well Error:	0.0 usft
Survey Program: 0-ISCSWA MWD														
Reference		Offset		Semi Major Axis			Distance						Warning	
Measured Depth (usft)	Vertical Depth (usft)	Measured Depth (usft)	Vertical Depth (usft)	Reference (usft)	Offset (usft)	Highside Toolface (°)	Offset Wellbore Centre +N/-S (usft)	Offset Wellbore Centre +E/-W (usft)	Between Centres (usft)	Between Ellipses (usft)	Total Uncertainty Axis	Separation Factor		
0.0	0.0	0.0	0.0	0.0	0.0	155.42	-22.2	10.2	24.4					
100.0	100.0	100.0	100.0	0.1	0.1	155.42	-22.2	10.2	24.4	24.3	0.18	139.358		
200.0	200.0	200.0	200.0	0.3	0.3	155.42	-22.2	10.2	24.4	23.8	0.62	39.100	CC, ES	
300.0	300.0	300.0	300.0	0.5	0.5	156.77	-22.2	10.2	25.8	24.7	1.12	22.988		
400.0	399.8	399.9	399.9	0.8	0.8	161.62	-22.2	10.0	31.8	30.1	1.70	18.703		
500.0	499.1	499.9	499.8	1.0	1.0	-179.10	-21.9	6.1	41.9	39.6	2.28	18.357	SF	
600.0	597.8	598.8	598.4	1.4	1.2	-165.28	-21.3	-1.1	56.3	53.4	2.85	19.719		
700.0	695.7	697.1	696.5	1.7	1.4	-161.53	-20.7	-8.4	74.5	71.1	3.36	22.138		
800.0	793.6	795.4	794.5	2.1	1.7	-161.02	-20.1	-15.7	93.1	89.3	3.83	24.292		
900.0	891.5	893.6	892.4	2.6	1.9	-160.68	-19.5	-22.9	111.7	107.4	4.33	25.830		
1,000.0	989.3	991.8	990.4	3.0	2.2	-160.44	-18.9	-30.2	130.4	125.5	4.84	26.960		
1,100.0	1,087.2	1,090.1	1,088.4	3.4	2.4	-160.26	-18.3	-37.4	149.0	143.6	5.36	27.812		
1,200.0	1,185.0	1,188.3	1,186.4	3.8	2.7	-160.12	-17.7	-44.7	167.6	161.7	5.89	28.472		
1,300.0	1,282.9	1,286.6	1,284.3	4.3	2.9	-160.01	-17.1	-52.0	186.3	179.8	6.42	28.994		

CC - Min centre to center distance or convergent point, SF - min separation factor, ES - min ellipse separation

Cathedral Energy Services

Anticollision Report

Company:	Caerus Oil & Gas (NAD 27)	Local Co-ordinate Reference:	Well PUCKETT 41C-2
Project:	Garfield County, CO	TVD Reference:	KB=22' @ 8499.0usft
Reference Site:	S2-T7S-R97W (Puckett Pad)	MD Reference:	KB=22' @ 8499.0usft
Site Error:	0.0usft	North Reference:	True
Reference Well:	PUCKETT 41C-2	Survey Calculation Method:	Minimum Curvature
Well Error:	0.0usft	Output errors are at	2.00 sigma
Reference Wellbore	DD	Database:	USA EDM 5000 Multi Users DB
Reference Design:	Plan #1	Offset TVD Reference:	Offset Datum

Offset Design S2-T7S-R97W (Puckett Pad) - PUCKETT 42D-2 - DD - Plan #1													Offset Site Error:	0.0 usft
Survey Program: 0-ISCSWA MWD													Offset Well Error:	0.0 usft
Reference		Offset		Semi Major Axis			Distance						Warning	
Measured Depth (usft)	Vertical Depth (usft)	Measured Depth (usft)	Vertical Depth (usft)	Reference (usft)	Offset (usft)	Highside Toolface (°)	Offset Wellbore Centre +N/-S (usft)	+E/-W (usft)	Between Centres (usft)	Between Ellipses (usft)	Total Uncertainty Axis	Separation Factor		
0.0	0.0	0.0	0.0	0.0	0.0	155.52	-29.1	13.3	32.0					
100.0	100.0	100.0	100.0	0.1	0.1	155.52	-29.1	13.3	32.0	31.8	0.18	182.622		
200.0	200.0	200.0	200.0	0.3	0.3	155.52	-29.1	13.3	32.0	31.4	0.62	51.239 CC, ES		
300.0	300.0	300.0	300.0	0.5	0.5	156.55	-29.1	13.3	33.4	32.2	1.12	29.756		
400.0	399.8	399.5	399.5	0.8	0.7	162.34	-29.8	12.0	39.7	38.0	1.70	23.404		
500.0	499.1	497.8	497.5	1.0	1.0	-177.44	-32.9	6.4	52.8	50.5	2.30	23.007 SF		
600.0	597.8	595.8	595.2	1.4	1.2	-164.55	-36.8	-0.8	71.9	69.0	2.88	24.986		
700.0	695.7	693.2	692.2	1.7	1.4	-160.99	-40.7	-8.0	94.6	91.2	3.38	27.948		
800.0	793.6	790.4	789.2	2.1	1.7	-160.59	-44.7	-15.1	117.7	113.9	3.85	30.574		
900.0	891.5	887.7	886.1	2.6	1.9	-160.31	-48.6	-22.3	140.9	136.6	4.34	32.446		
1,000.0	989.3	985.0	983.0	3.0	2.2	-160.12	-52.5	-29.5	164.1	159.2	4.85	33.818		
1,100.0	1,087.2	1,082.3	1,080.0	3.4	2.5	-159.97	-56.4	-36.7	187.2	181.9	5.37	34.850		

CC - Min centre to center distance or convergent point, SF - min separation factor, ES - min ellipse separation

Cathedral Energy Services

Anticollision Report

Company:	Caerus Oil & Gas (NAD 27)	Local Co-ordinate Reference:	Well PUCKETT 41C-2
Project:	Garfield County, CO	TVD Reference:	KB=22' @ 8499.0usft
Reference Site:	S2-T7S-R97W (Puckett Pad)	MD Reference:	KB=22' @ 8499.0usft
Site Error:	0.0usft	North Reference:	True
Reference Well:	PUCKETT 41C-2	Survey Calculation Method:	Minimum Curvature
Well Error:	0.0usft	Output errors are at	2.00 sigma
Reference Wellbore	DD	Database:	USA EDM 5000 Multi Users DB
Reference Design:	Plan #1	Offset TVD Reference:	Offset Datum

Offset Design													Offset Site Error:	0.0 usft	
Survey Program: 0-ISCSWA MWD													Offset Well Error:		0.0 usft
Reference				Offset				Semi Major Axis			Distance				Warning
Measured Depth (usft)	Vertical Depth (usft)	Measured Depth (usft)	Vertical Depth (usft)	Reference (usft)	Offset (usft)	Highside Toolface (°)	Offset Wellbore Centre +N/-S (usft)	+E/-W (usft)	Between Centres (usft)	Between Ellipses (usft)	Total Uncertainty Axis	Separation Factor			
0.0	0.0	0.0	0.0	0.0	0.0	155.80	-36.4	16.4	39.9						
100.0	100.0	100.0	100.0	0.1	0.1	155.80	-36.4	16.4	39.9	39.8	0.18	227.780			
200.0	200.0	200.0	200.0	0.3	0.3	155.80	-36.4	16.4	39.9	39.3	0.62	63.909 CC, ES			
300.0	300.0	299.7	299.7	0.5	0.5	156.81	-36.5	16.3	41.4	40.2	1.12	37.050			
400.0	399.8	398.1	398.0	0.8	0.7	163.67	-39.4	13.8	49.4	47.8	1.69	29.270			
500.0	499.1	494.5	494.1	1.0	1.0	-177.32	-46.0	8.2	66.3	63.9	2.32	28.589 SF			
600.0	597.8	591.6	590.5	1.4	1.2	-164.90	-54.4	1.0	89.8	86.9	2.92	30.794			
700.0	695.7	687.8	686.1	1.7	1.5	-161.26	-62.7	-6.1	117.0	113.5	3.43	34.142			
800.0	793.6	783.9	781.5	2.1	1.8	-160.79	-71.0	-13.2	144.6	140.7	3.89	37.138			
900.0	891.5	880.0	877.0	2.6	2.1	-160.47	-79.4	-20.3	172.2	167.9	4.39	39.266			
1,000.0	989.3	976.1	972.5	3.0	2.4	-160.24	-87.7	-27.4	199.9	195.0	4.90	40.818			

CC - Min centre to center distance or convergent point, SF - min separation factor, ES - min ellipse separation

Cathedral Energy Services

Anticollision Report

Company:	Caerus Oil & Gas (NAD 27)	Local Co-ordinate Reference:	Well PUCKETT 41C-2
Project:	Garfield County, CO	TVD Reference:	KB=22' @ 8499.0usft
Reference Site:	S2-T7S-R97W (Puckett Pad)	MD Reference:	KB=22' @ 8499.0usft
Site Error:	0.0usft	North Reference:	True
Reference Well:	PUCKETT 41C-2	Survey Calculation Method:	Minimum Curvature
Well Error:	0.0usft	Output errors are at	2.00 sigma
Reference Wellbore	DD	Database:	USA EDM 5000 Multi Users DB
Reference Design:	Plan #1	Offset TVD Reference:	Offset Datum

Offset Design													Offset Site Error:	0.0 usft
Survey Program: 0-ISCSWA MWD													Offset Well Error:	0.0 usft
Reference		Offset		Semi Major Axis			Distance						Warning	
Measured Depth (usft)	Vertical Depth (usft)	Measured Depth (usft)	Vertical Depth (usft)	Reference (usft)	Offset (usft)	Highside Toolface (°)	Offset Wellbore Centre +N/-S (usft)	+E/-W (usft)	Between Centres (usft)	Between Ellipses (usft)	Total Uncertainty Axis	Separation Factor		
0.0	0.0	0.0	0.0	0.0	0.0	156.33	-44.4	19.5	48.5					
100.0	100.0	100.0	100.0	0.1	0.1	156.33	-44.4	19.5	48.5	48.3	0.18	276.717		
200.0	200.0	200.0	200.0	0.3	0.3	156.33	-44.4	19.5	48.5	47.9	0.62	77.640	CC, ES	
300.0	300.0	298.8	298.7	0.5	0.5	158.24	-45.7	18.8	50.8	49.7	1.11	45.743		
400.0	399.8	396.0	395.8	0.8	0.7	164.94	-51.1	15.7	61.3	59.6	1.71	35.855		
500.0	499.1	490.9	490.1	1.0	1.0	-177.48	-60.6	10.4	81.3	78.9	2.35	34.621	SF	
600.0	597.8	585.9	584.0	1.4	1.3	-165.42	-73.0	3.5	109.1	106.1	2.97	36.752		
700.0	695.7	680.8	677.7	1.7	1.6	-161.66	-85.6	-3.5	140.7	137.2	3.48	40.430		
800.0	793.6	775.5	771.3	2.1	1.9	-161.10	-98.1	-10.6	172.7	168.8	3.95	43.755		

CC - Min centre to center distance or convergent point, SF - min separation factor, ES - min ellipse separation

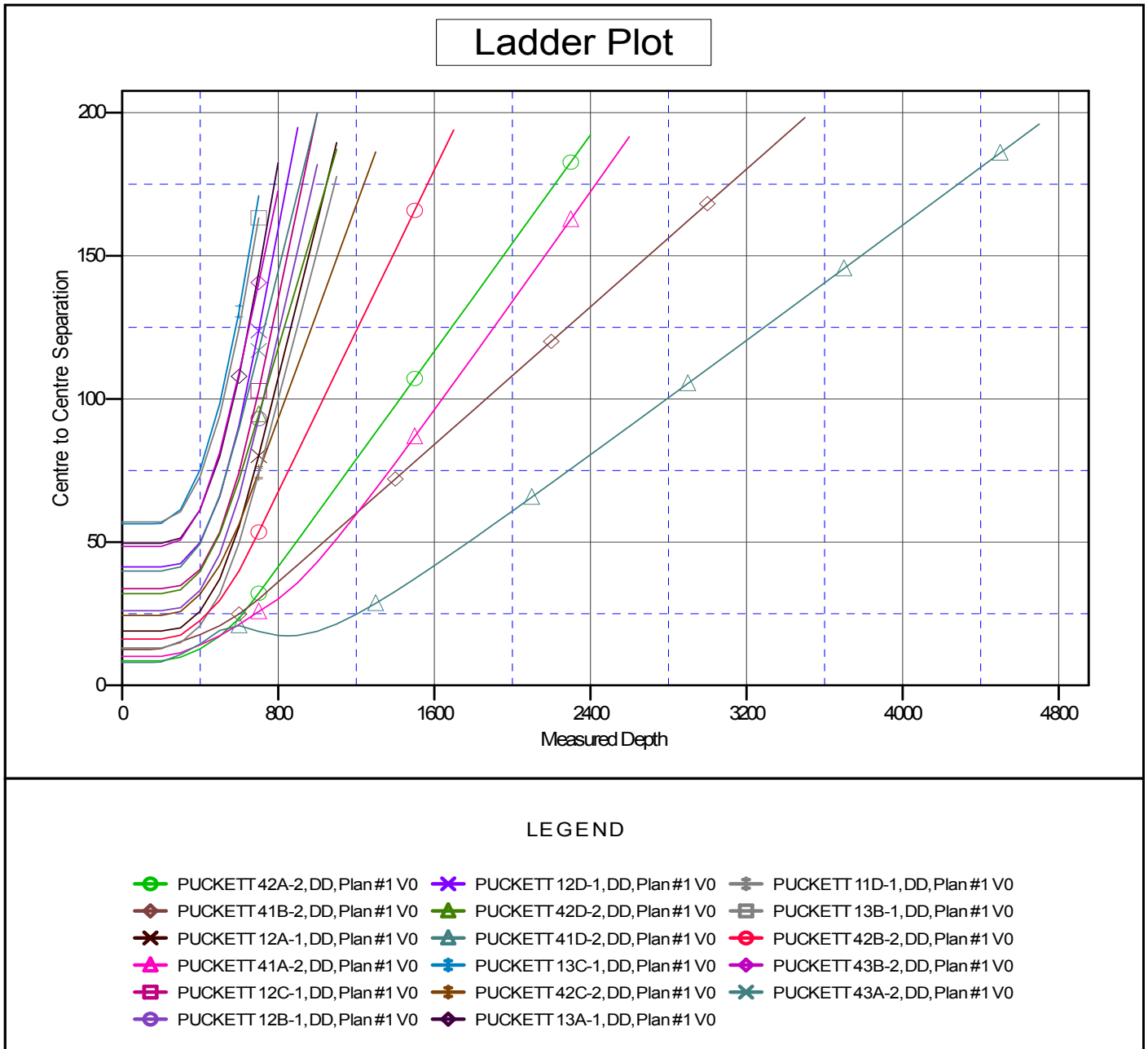
Cathedral Energy Services

Anticollision Report

Company: Caerus Oil & Gas (NAD 27)	Local Co-ordinate Reference: Well PUCKETT 41C-2	
Project: Garfield County, CO	TVD Reference: KB=22' @ 8499.0usft	
Reference Site: S2-T7S-R97W (Puckett Pad)	MD Reference: KB=22' @ 8499.0usft	
Site Error: 0.0usft	North Reference: True	
Reference Well: PUCKETT 41C-2	Survey Calculation Method: Minimum Curvature	
Well Error: 0.0usft	Output errors are at 2.00 sigma	
Reference Wellbore DD	Database: USA EDM 5000 Multi Users DB	
Reference Design: Plan #1	Offset TVD Reference: Offset Datum	

Reference Depths are relative to KB=22' @ 8499.0usft
 Offset Depths are relative to Offset Datum
 Central Meridian is -105.500000 °

Coordinates are relative to: PUCKETT 41C-2
 Coordinate System is US State Plane 1927 (Exact solution), Colorado Central 502
 Grid Convergence at Surface is: -1.69°



CC - Min centre to center distance or convergent point, SF - min separation factor, ES - min ellipse separation