

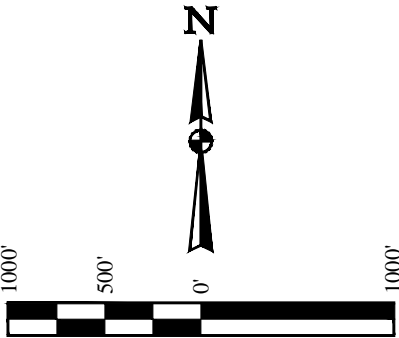
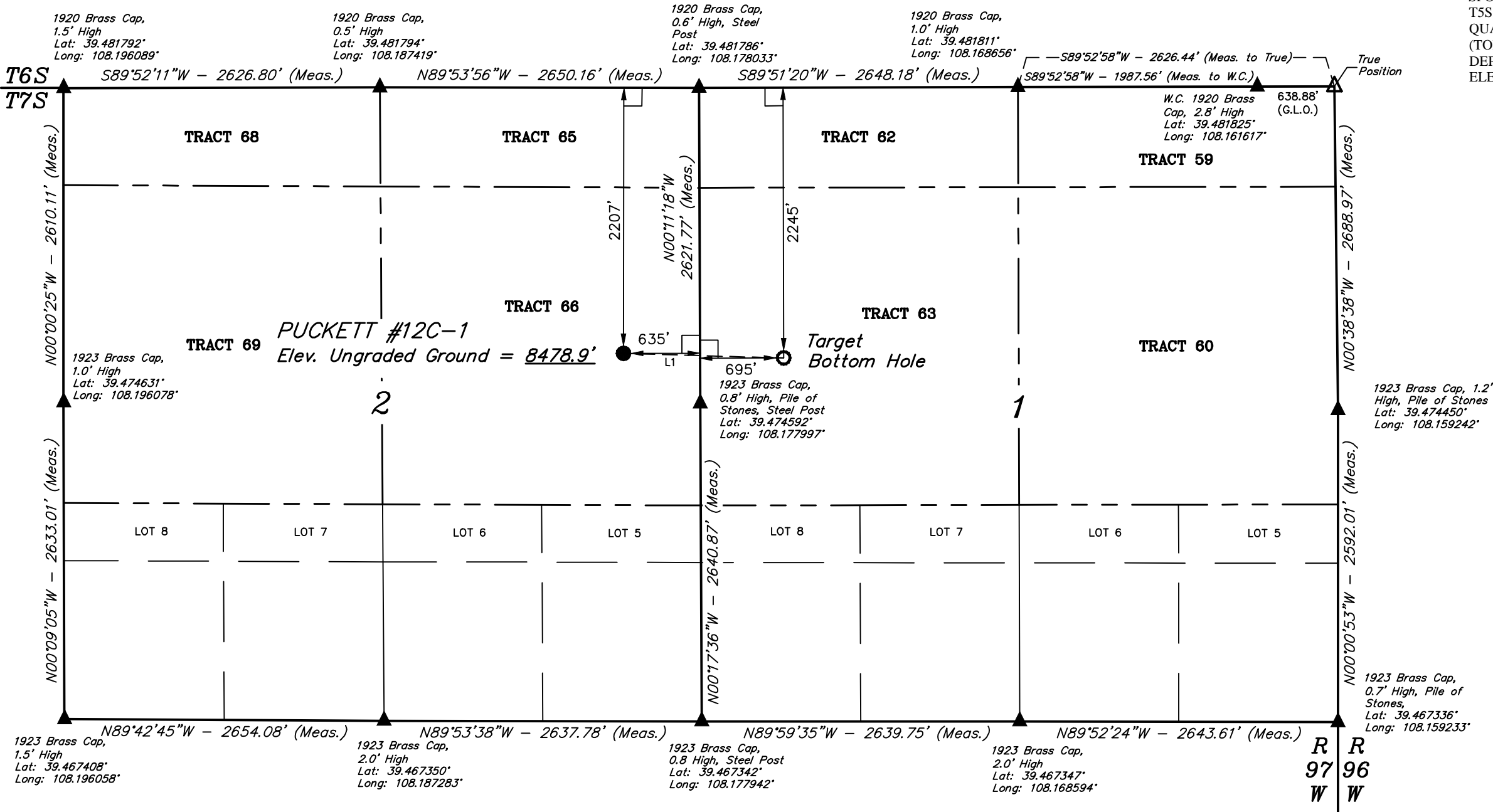
T7S, R97W, 6th P.M.

Caerus Oil & Gas LLC

PUCKETT #12C-1
TRACT 66, SECTION 2, T7S, R97W, 6th P.M.
GARFIELD COUNTY, COLORADO

BASIS OF BEARINGS
BASIS OF ELEVATION

SPOT ELEVATION AT THE NORTHWEST CORNER OF SECTION 30, T5S, R95W, 6th P.M. TAKEN FROM THE FORKED GULCH QUADRANGLE, COLORADO, GARFIELD COUNTY, 7.5 MINUTE SERIES (TOPOGRAPHICAL MAP) PUBLISHED BY THE UNITED STATES DEPARTMENT OF THE INTERIOR, GEOLOGICAL SURVEY. SAID ELEVATION IS MARKED AS BEING 5966 FEET.



LINE TABLE		
LINE	DIRECTION	LENGTH
L1	S88°23'32"E	1330.63'

- LEGEND:
- 90° SYMBOL
 - PROPOSED WELLHEAD.
 - TARGET BOTTOM HOLE.
 - SECTION CORNERS LOCATED.
 - SECTION CORNERS RE-ESTABLISHED. (Not Set on Ground.)

PDOP = 1.3

NAD 83 (TARGET BOTTOM HOLE)	NAD 83 (SURFACE LOCATION)
LATITUDE = 39°28'32.27" (39.475631)	LATITUDE = 39°28'32.63" (39.475731)
LONGITUDE = 108°10'31.95" (108.175542)	LONGITUDE = 108°10'48.91" (108.180253)
NAD 27 (TARGET BOTTOM HOLE)	NAD 27 (SURFACE LOCATION)
LATITUDE = 39°28'32.35" (39.475653)	LATITUDE = 39°28'32.71" (39.475753)
LONGITUDE = 108°10'29.66" (108.174906)	LONGITUDE = 108°10'46.61" (108.179614)



UELS, LLC
Corporate Office * 85 South 200 East
Vernal, UT 84078 * (435) 789-1017

SURVEYED BY: JARED CHRISTOPHER, B.B.	DATE: 08-19-14
DRAWN BY: M.D.	DATE DRAWN: 09-12-14
SCALE: 1" = 1000'	REVISED: 00-00-00
WELL LOCATION PLAT	