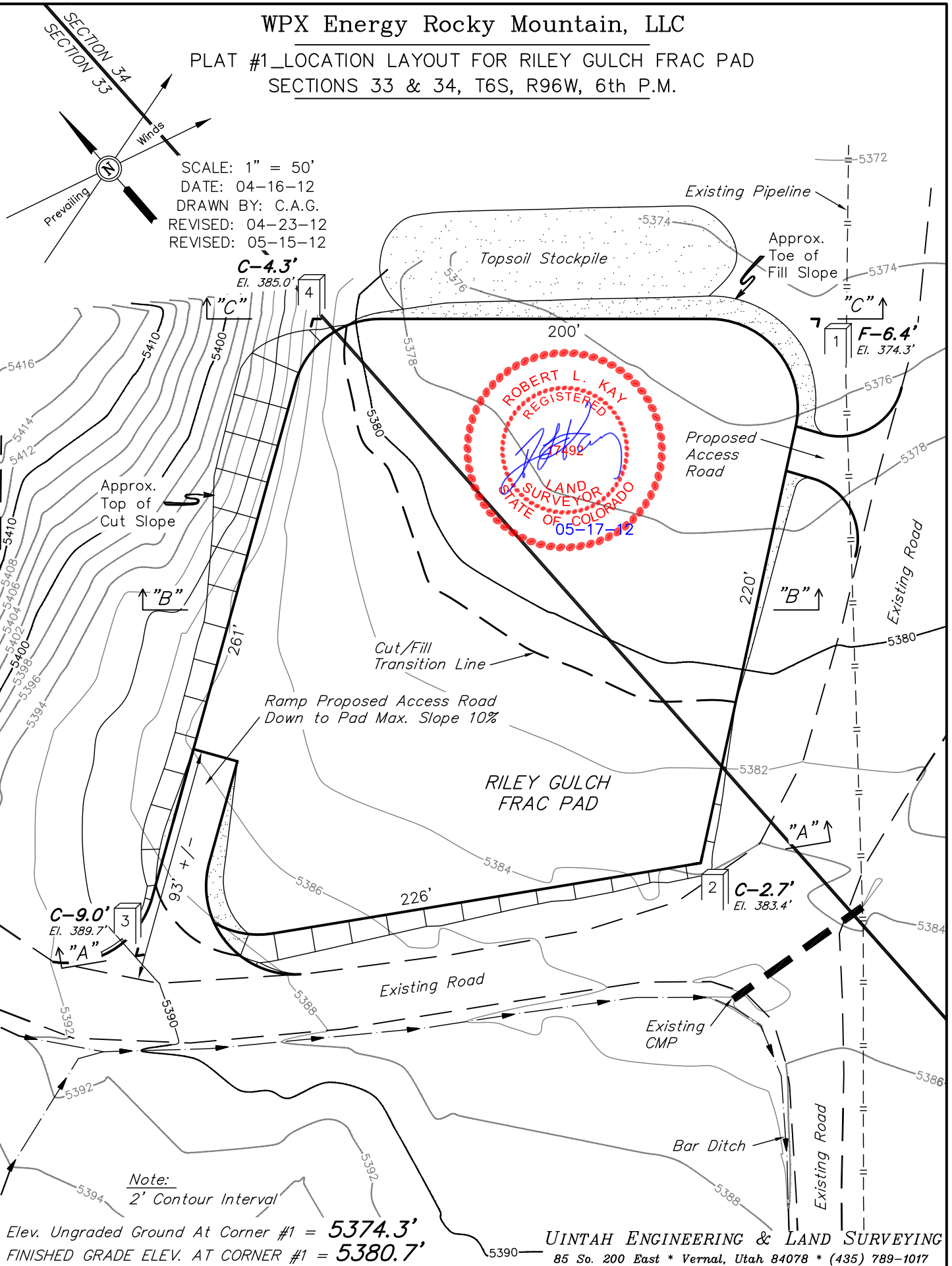


# WPX Energy Rocky Mountain, LLC

PLAT #1\_LOCATION LAYOUT FOR RILEY GULCH FRAC PAD  
SECTIONS 33 & 34, T6S, R96W, 6th P.M.

SCALE: 1" = 50'  
DATE: 04-16-12  
DRAWN BY: C.A.G.  
REVISED: 04-23-12  
REVISED: 05-15-12



Elev. Ungraded Ground At Corner #1 = 5374.3'  
FINISHED GRADE ELEV. AT CORNER #1 = 5380.7'

UINTAH ENGINEERING & LAND SURVEYING  
85 So. 200 East \* Vernal, Utah 84078 \* (435) 789-1017